

NOTES (APPLICABLE TO ALL ELECTRICAL DRAWINGS):

1.

ALL SYSTEMS, EQUIPMENT, DEVICES, RACEWAYS, CABLES, ETC. INDICATED ARE NEW UNLESS SPECIFICALLY NOTED AS EXISTING.
2.

THE ELECTRICAL WORK SHALL INCLUDE ALL WORK SHOWN ON THE DRAWINGS, DETAILS, DIAGRAMS, SCHEDULES, ETC., AND AS DESCRIBED IN THE SPECIFICATIONS.
3.

PLAN DRAWINGS ARE DIAGRAMMATIC IN FORM AND DO NOT ATTEMPT TO SHOW COMPLETE DETAILS OR LIST EVERY ITEM OF THE ELECTRICAL SYSTEM, EQUIPMENT, OR BUILDING CONSTRUCTION; HOWEVER, THE ROUTING OF RACEWAYS AND CIRCUITS, THE LOCATIONS OF EQUIPMENT, DEVICES AND FIXTURES REPRESENT THE DESIRED FINISHED ARRANGEMENT.
4.

OBTAIN APPROVAL FROM ARCHITECT & ENGINEER PRIOR TO PROCEEDING WITH ALTERNATE CONDUIT ROUTES.
5.

DETAIL DRAWINGS SHALL BE CONSIDERED APPLICABLE TO ALL PLAN DRAWINGS AND SIMILAR CONDITIONS EVEN IF THE DETAILS ARE NOT SPECIFICALLY REFERENCED.
6.

RACEWAYS AND CABLES THROUGHOUT THE FACILITY SHALL BE RUN CONCEALED IN THE WALLS, ABOVE THE CEILING OR BELOW THE FLOOR WHERE POSSIBLE, EXCEPT, EXPOSED WITHIN UTILITY & OTHER NON-PUBLIC SPACES. WITHIN PUBLIC SPACES, WHERE DUE TO THE BUILDINGS CONSTRUCTION, IT IS NOT POSSIBLE TO ROUTE RACEWAYS & CABLES CONCEALED, RACEWAYS MAY BE RUN EXPOSED. (EXPOSED CABLES ARE NOT ALLOWED EXCEPT IN TELECOMMUNICATIONS ROOMS.) EXPOSED RACEWAYS SHALL BE RUN AS NEATLY & UNOBTUSIVELY AS POSSIBLE, SUPPORTED AS REQUIRED, PARALLEL OR AT RIGHT ANGLES TO CEILINGS, WALLS & STRUCTURAL MEMBERS.
7.

RACEWAYS SHALL BE AS FOLLOWS, UNLESS NOTED OTHERWISE:

A.

INTERIOR ACCESSIBLE CONCEALED SPACES - ELECTRICAL METALLIC TUBING (EMT) WITH FLEXIBLE METAL CONDUIT (FLEX) FOR FINAL CONNECTIONS TO VIBRATING EQUIPMENT.

B.

INTERIOR NON-ACCESSIBLE CONCEALED SPACES - FLEXIBLE METAL CONDUIT (FLEX) MAY BE "FISHED" FROM ONE POINT OF CONNECTION TO ANOTHER.

C.

INTERIOR, EXPOSED IN TELECOM ROOMS, UTILITY ROOMS & OTHER NON-PUBLIC SPACES - ELECTRICAL METALLIC TUBING (EMT).

D.

INTERIOR, EXPOSED IN ROOMS, CORRIDORS & THE LIKE WHERE READILY VISIBLE TO BUILDING OCCUPANTS - SURFACE METAL RACEWAY (SMR).

E.

METAL CLAD (MC) CABLE SHALL NOT BE PERMITTED, EXCEPT FOR FIXTURE WHIPS CONCEALED IN ACCESSIBLE CEILING SPACES.
8.

RACEWAYS SHALL BE SIZED SO THAT THE CABLE FILL DOES NOT EXCEED 40%, EXCEPT, MINIMUM CONDUIT SIZES SHALL BE AS FOLLOWS, UNLESS NOTED OTHERWISE:

A.

3/4" - BRANCH CIRCUITS AND SYSTEM RACEWAYS, EXCEPT AS NOTED BELOW.

B.

1/2" - RUNS WITH #12 AWG OR SMALLER CIRCUIT CABLE TERMINATING IN A SINGLE DEVICE.

C.

1/2" - CONDUIT STUBS FROM ACCESSIBLE CEILING SPACES DOWN TO A SINGLE FIRE ALARM DEVICE (PULL STATION, HORN/STROBE, ETC.) OR SINGLE PUBLIC ADDRESS DEVICE (MICROPHONE, SPEAKER, ETC.)

D.

1" - POWER & LIGHTING HOMERUNS.

E.

1" - UNDERGROUND CONDUITS.

F.

1" - TELECOMMUNICATIONS RACEWAYS TERMINATING IN A SINGLE DEVICE.

G.

1 1/4" - TELECOMMUNICATIONS RACEWAYS SERVING TWO DEVICE LOCATIONS
9.

DEVICE BOX SIZES SHALL BE SIZED IN ACCORDANCE WITH NEC FOR BOX FILL, EXCEPT MINIMUM SHALL BE AS FOLLOWS, UNLESS SPECIFICALLY NOTED OTHERWISE:

A.

POWER & LIGHTING - 4" x 4" x 1 1/2"

B.

TELECOMMUNICATIONS - 4 11/16" x 4 11/16" x 2 1/8"

C.

FIRE ALARM, ACCESS CONTROL, SECURITY, PAGING, ANCILLARY, ETC. SYSTEMS SHALL BE IN ACCORDANCE WITH THE MANUFACTURERS REQUIREMENTS.
10.

DEVICE MOUNTING HEIGHTS SHALL BE AS FOLLOWS, UNLESS SPECIFICALLY NOTED OTHERWISE. MOUNTING HEIGHTS SHOWN ON THE DRAWINGS ARE TO THE CENTER OF THE BACK BOX FROM THE INTERIOR FINISHED FLOOR.

A.

POWER, TELECOMMUNICATIONS, AUDIO/VIDEO, ETC. RECEPTACLES - 18"

B.

LIGHTING SWITCHES, CONTROL STATIONS, ETC. - 46"

C.

DEVICES ABOVE COUNTERS - 4" ABOVE BACKSPASH.

D.

FIRE ALARM PULL STATIONS - 46"

E.

FIRE ALARM NOTIFICATION APPLIANCES - 90"
11.

BRANCH CIRCUIT CABLES, EQUIPMENT GROUND CABLES AND ABOVE GRADE FEEDER CABLES SHALL BE 1/C COPPER, #12 AWG UNLESS NOTED OTHERWISE, WITH 600V TYPE XHHW OR THHN/THWN INSULATION.
12.

IN ADDITION TO THE CIRCUIT CONDUCTORS INDICATED, CONTRACTOR SHALL PROVIDE AN EQUIPMENT GROUND CABLE (SIZED THE SAME AS THE LARGEST CIRCUIT CONDUCTOR UNLESS SPECIFICALLY NOTED OTHERWISE) WITHIN EACH RACEWAY WITH THE CIRCUIT CONDUCTORS.
13.

SEE ELECTRICAL SPECIFICATION FOR SYSTEMS CABLE TYPES.
14.

ALL WIRING SHALL BE ENCLOSED WITHIN THE RACEWAY SYSTEM, EXCEPT, TELECOMMUNICATIONS, FIRE ALARM, ACCESS CONTROL AND CLASS 2 LOW VOLTAGE CABLING MAY BE BUNDLED TOGETHER AND SUPPORTED OPEN IN ACCESSIBLE CEILING SPACES. EACH SYSTEMS CABLES SHALL BE BUNDLED AND MANAGED SEPARATELY FROM OTHER SYSTEMS CABLES.
15.

FLOOR, WALL AND CEILING PENETRATIONS BY OPEN CABLES WILL NOT BE ALLOWED. PROVIDE CONDUIT SLEEVES WHERE OPEN CABLES PASS THROUGH WALLS, DRAFTSTOPS, CEILINGS, FLOORS, ETC.
16.

PROTECT "OPEN" CABLE WIRING FROM ROUGH AND/OR SHARP EDGES ON SUPPORTS, STRUCTURAL MEMBERS, ETC. AS REQUIRED DURING INSTALLATION.
17.

VERIFY ALL EQUIPMENT, DEVICE, ETC. LOCATIONS WITH THE ARCHITECT PRIOR TO ROUGH-IN. SEE MECHANICAL DRAWINGS FOR LOCATION OF MECHANICAL EQUIPMENT, ARCHITECTURAL DRAWINGS FOR SPECIALTY EQUIPMENT, CASEWORK, ETC. THE OWNER RESERVES THE RIGHT TO RELOCATE OUTLETS, ETC. WITHIN 10' OF THE LOCATION INDICATED, PRIOR TO INSTALLATION, WITHOUT INCREASE IN COST.

18.

SEE ARCHITECTURAL SPEC. SECTIONS (E.G. DOOR HARDWARE, APPLIANCES, DOORS, ETC.), ENTIRE DIVISION 11 - EQUIPMENT, & ENTIRE DIVISION 22 - PLUMBING, DIVISION 23 - HVAC FOR ADDITIONAL REQUIREMENTS, FURTHER CLARIFICATIONS, ETC. OF EQUIPMENT ELECTRICAL REQUIREMENTS.
19.

CONTRACTOR SHALL VERIFY WITH THE ARCHITECT THE FIRE RESISTIVE RATINGS FOR WALLS, PARTITIONS AND OTHER BUILDING STRUCTURES. INSTALLATION OF SYSTEM COMPONENTS AND RACEWAYS MUST MAINTAIN THE FIRE RESISTIVE RATING OF THE BUILDING.
20.

POWER, FIRE ALARM, SECURITY & TELECOMMUNICATIONS SYSTEMS INTERRUPTIONS (WHETHER TO THE ENTIRE SYSTEM OR TO INDIVIDUAL PANELS, EQUIPMENT, ROOMS, DEVICES, ETC.) SHALL BE KEPT TO AN ABSOLUTE MINIMUM, AND SHALL NOT BE DONE WITHOUT PRIOR APPROVAL & SCHEDULING WITH THE ARCHITECT A MINIMUM OF 14 DAYS IN ADVANCE AND CONFIRMED 48 HOURS IN ADVANCE.
21.

SMOKE DETECTORS SHALL NOT BE LOCATED WITHIN 3 FEET OF ANY AIR SUPPLY VENT OR ANY FLUORESCENT LIGHTING BALLAST REGARDLESS OF THE LOCATION INDICATED ON THE DRAWINGS.
22.

FIRE ALARM & SECURITY WIRING SHALL RUN FROM DEVICE TO DEVICE WITHOUT SPLICES OR TAPS. AT EACH BOX, THE INCOMMING PAIR OF THE INTELLIGENT LOOP CONDUCTORS SHALL BE IDENTIFIED WITH A SINGLE WRAP OF RED COLORED ELECTRICAL TAPE. "T" TAPS SHALL NOT BE INSTALLED WITHOUT SPECIFIC APPROVAL FROM THE ENGINEER.
23.

LABELING & NAMEPLATES:

A.

OUTLETS SHALL BE LABELED WITH THE PANEL AND CIRCUIT NUMBER FROM WHICH ITS FED. LABELS SHALL BE HEAVY DUTY ADHESIVE TYPE, CLEAR TAPE WITH BLACK LETTERING, MADE WITH A LABEL PRINTING DEVICE.

B.

JUNCTION BOXES SHALL BE LABELED WITH THE PANEL AND CIRCUIT NUMBER CONTAINED WITHIN. MARKING SHALL BE LEGIBLY HAND-WRITTEN WITH BLACK INDELIBEL MARKER.

C.

REFER TO SPECIFICATIONS FOR PANELS, DISCONNECT SWITCHES, STARTERS, ETC. NAMEPLATES AND LABELING.

DEMOLITION NOTES (APPLICABLE TO ALL ELECTRICAL DRAWINGS):

1.

CONTRACTOR SHALL REMOVE ALL EXISTING EQUIPMENT, DEVICES, ETC. WHERE INDICATED. EXISTING DEVICES NOT SHOWN ON THE DRAWINGS SHALL REMAIN. ALL ASSOCIATED CONDUIT, BOXES, CABLES, ETC. SHALL BE REMOVED TO THEIR POINT OF ORIGIN &/OR DESTINATION, EXCEPT, CONDUITS MAY BE RE-USED IF IN GOOD CONDITION & SUITABLE FOR THE NEW INSTALLATION, &/OR CONCEALED CONDUITS MAY BE LABELED & ABANDONED IN PLACE. EXISTING CABLES SHALL BE REMOVED OR REPLACED. EXISTING FLUSH BOXES SHALL BE PROVIDED WITH SUITABLE COVERS OR WALLPLATES.
2.

EXISTING EQUIPMENT, FIXTURES, DEVICES, ETC. TO BE RE-USED IN THE NEW WORK SHALL BE REMOVED CAREFULLY, & PROTECTED FROM DAMAGE AS REQUIRED DURING DEMOLITION & CONSTRUCTION.
3.

EXISTING EQUIPMENT, FIXTURES, DEVICES, ETC. TO REMAIN SHALL BE PROTECTED AS REQUIRED DURING DEMOLITION AND CONSTRUCTION.
4.

EXISTING CIRCUITS, CONDUITS, CABLES, ETC. INTERRUPTED DUE TO THE REMODEL SHALL BE RE-CONNECTED AS REQUIRED TO MAINTAIN THE CIRCUIT.
5.

ALL SURPLUS MATERIAL REMOVED DURING THE DEMOLITION SHALL BE INSPECTED BY THE OWNER, AND THOSE ITEMS SELECTED SHALL REMAIN THE PROPERTY OF THE OWNER. ALL REMAINING SURPLUS MATERIALS SHALL BE REMOVED FROM THE SITE & DISPOSED OF BY THE CONTRACTOR.

ENERGY CODE COMPLIANCE (PROVIDED BY CONTRACTOR):

1.

ALL ELECTRICAL AND LIGHTING SYSTEMS FOR WHICH WSEC REQUIRES CONTROL FUNCTIONS AND/OR CONFIGURATION TO BE PERFORMED ARE REQUIRED TO BE COMMISSIONED IN ACCORDANCE WITH WSEC REQUIREMENTS.

ELECTRICAL LEGEND

LIGHTING

	LUMINAIRE, SURFACE MTD. (Aa = FIXTURE TYPE, A CONTROLLED BY SWITCH Ba, TYPICAL.)
	LUMINAIRE, PENDANT MTD.
	RECESSED DOWNLIGHT
	LUMINAIRE, SURFACE MTD.
	COMBINATION LIGHTED EXIST SIGN & EMERGENCY LIGHTING UNIT, 2 HEAD
	SINGLE-POLE SWITCH
	LOW VOLTAGE TOGGLE SWITCH
	LOW VOLTAGE DIMMER SWITCH
	LIGHTING CONTROL MOTION SENSOR SWITCH
	LIGHTING CONTROL SWITCH STATION
	PHOTO SENSOR
	LIGHTING MOTION DETECTOR, LOW VOLTAGE
	LIGHTING MOTION DETECTOR, LINE VOLTAGE
	LIGHTING CONTROL POWER PACK
	LIGHTING CONTROL ROOM CONTROLLER

OUTLETS

	DUPLEX OUTLET
	DOUBLE DUPLEX OUTLET
	DUPLEX OUTLET, GROUND FAULT INTERRUPTING
	DUPLEX OUTLET, ELEVATION ABOVE FLOOR TO CENTERLINE OF DEVICE INDICATED
	TELECOMMUNICATIONS OUTLET, FLUSH MOUNTED (IMD = 1 VOICE & 1 DATA CABLES, TYPICAL)
	AUDIO/VIDEO OUTLET, 1 GANG
	AUDIO/VIDEO OUTLET, 2 GANG
	AUDIO/VIDEO OUTLET, 4 GANG
	SPEAKER, RECESSED, CEILING MOUNTED
	FIRE ALARM HORN/STROBE, CEILING MTD. (Bcd UNLESS NOTED OTHERWISE)
	FIRE ALARM HORN/STROBE, WALL MTD.
	FIRE ALARM SMOKE DETECTOR

MISCELLANEOUS

	BRANCH CIRCUIT, ABOVE GRADE, CONCEALED (OR SIMILAR, SLASHES + NO. OF CIRCUIT CONDUCTORS WHERE APPLICABLE)
	BRANCH CIRCUIT, ABOVE GRADE, EXPOSED (OR SIMILAR, SLASHES + NO. OF CIRCUIT CONDUCTORS WHERE APPLICABLE)
	HOMERUN TO LOCATION INDICATED, CONCEALED (TYPICAL)
	HOMERUN TO LOCATION INDICATED, EXPOSED (TYPICAL)
	BRANCH CIRCUIT, CONDUIT BODY
	CONDUIT STUB-UP INTO CEILING SPACE OR ONTO CABLE TRAY
	BELOW FLOOR/GRADE CONDUIT
	EXISTING CONDUIT, NEW CABLE
	GROUND CABLE
	CABLE RUN "OPEN" IN ACCESSIBLE CEILING SPACE (SLASHES + No. & TYPE OF CABLES WHERE APPLICABLE)
	JUNCTION BOX
	DISCONNECT SWITCH
	PANELBOARD
	WEATHER PROOF
	EXISTING TO REMAIN
	REPLACE EXISTING
	RELOCATE EXISTING

DEMOLITION

(DASHED INDICATES EXISTING TO BE REMOVED)

	LUMINAIRE, SURFACE MTD.
	SWITCH
	DUPLEX OUTLET
	DOUBLE DUPLEX OUTLET
	COMMUNICATIONS OUTLET
	BRANCH CIRCUIT CONDUIT, SURFACE MTD.
	BRANCH CIRCUIT CONDUIT, CONCEALED
	FIRE ALARM HORN WITH STROBE LIGHT
	FIRE ALARM SMOKE DETECTOR



CARLETTI ARCHITECTS P.S.

architecture & planning

116 EAST FIR STREET
SUITE A
MOUNT VERNON, WA. 98273

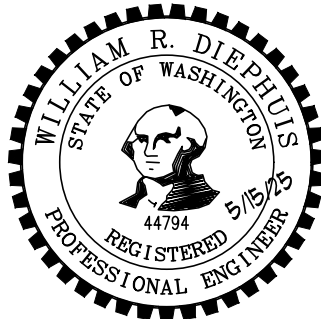
Phone: (360) 424-0394
Fax: (360) 424-5726

K ENGINEERS INC.

208 Third Street
Lynden, WA. 98264
Bus. (360) 354-4757
FAX (360) 354-6794

SKAGIT COUNTY COURTHOUSE
HEARING ROOM REMODEL
700 S. SECOND STREET
MOUNT VERNON, WA 98273

CONTACT:
KEN HANSEN
EMAIL: khansen@co.skagit.wa.us
PHONE: (360) 416-1179



2405
PROJECT NUMBER:

REVISIONS:

05-15-25 BID SET

SHEET TITLE:

ELECTRICAL - NOTES, LEGEND

CABLE CODES & DRAWING INDEX

PJC
PROJECT ARCHITECT.

KL
DRAWN BY:

BD
CHECKED BY:

MAY 15, 2025
DATE

2405\SKAGIT COURTHOUSE
COMPUTER FILE NAME

E-0.1

COPYRIGHT 2025 CARLETTI ARCHITECTS, P.S.



CARLETTI ARCHITECTS P.S.

architecture & planning

116 EAST FIR STREET
SUITE A
MOUNT VERNON, WA. 98273

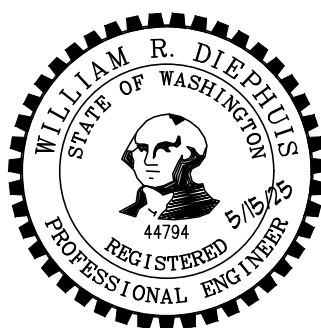
Phone: (360) 424-0394
Fax: (360) 424-5726

K ENGINEERS INC.

208 Third Street
Lynden, WA. 98264
Bus. (360) 354-4757
FAX (360) 354-6794

SKAGIT COUNTY COURTHOUSE
HEARING ROOM REMODEL
700 S. SECOND STREET
MOUNT VERNON, WA 98273

CONTACT:
KEN HANSEN
EMAIL: khansen@co.skagit.wa.us
PHONE: (360) 416-1179



2405
PROJECT NUMBER:

REVISIONS:
05-15-25 BID SET

SHEET TITLE:
ELECTRICAL -
DEMOLITION PLAN

PJC
PROJECT ARCHITECT:

KL
DRAWN BY:

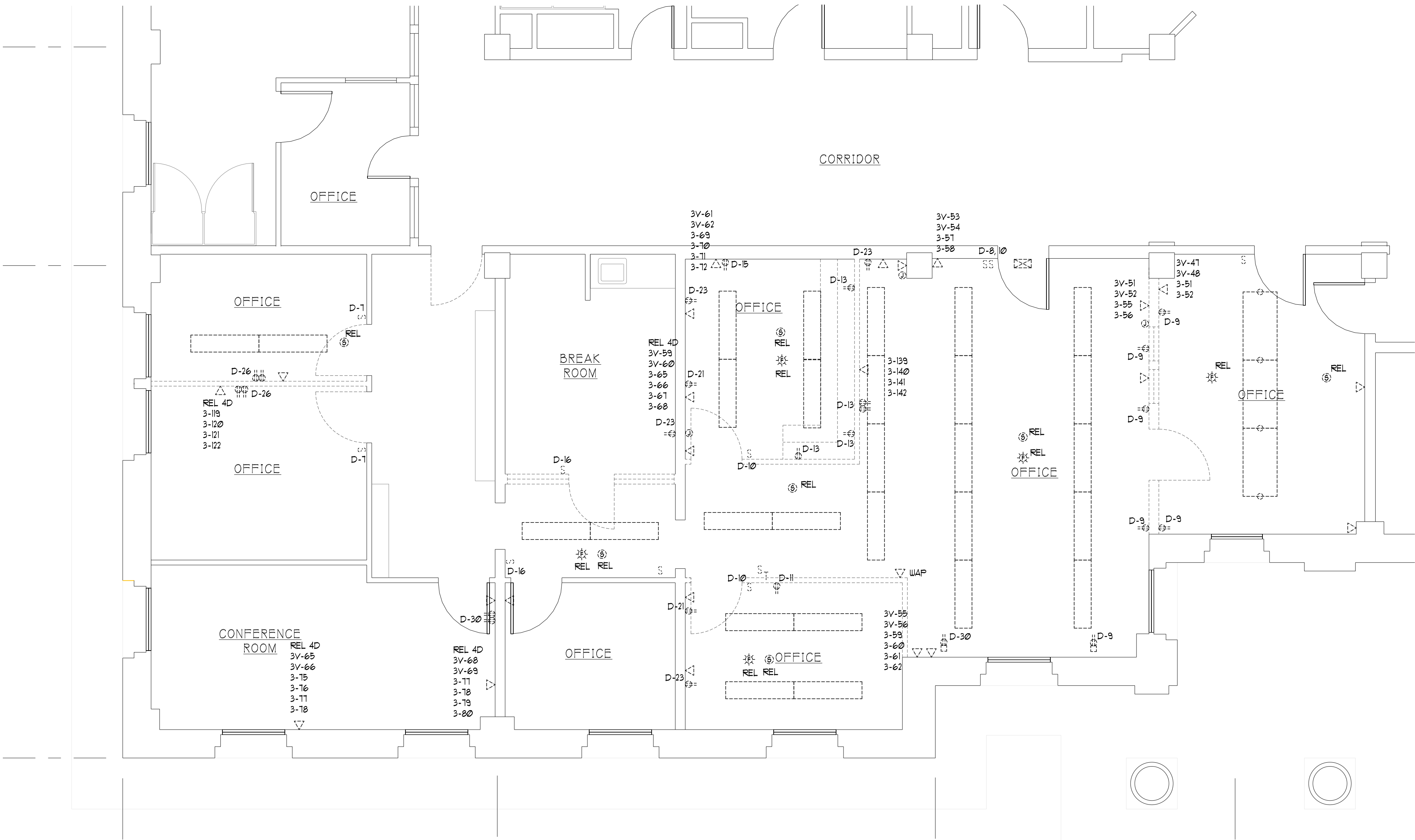
BD
CHECKED BY:

MAY 15, 2025
DATE

2405\SKAGIT COURTHOUSE
COMPUTER FILE NAME

E-1.1

COPYRIGHT 2025 CARLETTI ARCHITECTS, P.S.



ELECTRICAL - DEMOLITION PLAN

SCALE= 1/4"=1'-0"



CARLETTI ARCHITECTS P.S.

architecture & planning

116 EAST FIR STREET
SUITE A
MOUNT VERNON, WA. 98273

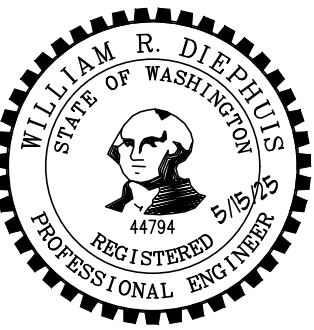
Phone: (360) 424-0394
Fax: (360) 424-5726

K ENGINEERS INC.

208 Third Street
Lynden, WA. 98264
Bus. (360) 354-4757
FAX (360) 354-6794

SKAGIT COUNTY COURTHOUSE
HEARING ROOM REMODEL
700 S. SECOND STREET
MOUNT VERNON, WA 98273

CONTACT:
KEN HANSEN
EMAIL: khansen@co.skagit.wa.us
PHONE: (360) 416-1179



2405
PROJECT NUMBER:

REVISIONS:
05-15-25 BID SET

SHEET TITLE:

ELECTRICAL - POWER PLAN

PJC
PROJECT ARCHITECT:

KL
DRAWN BY:

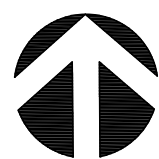
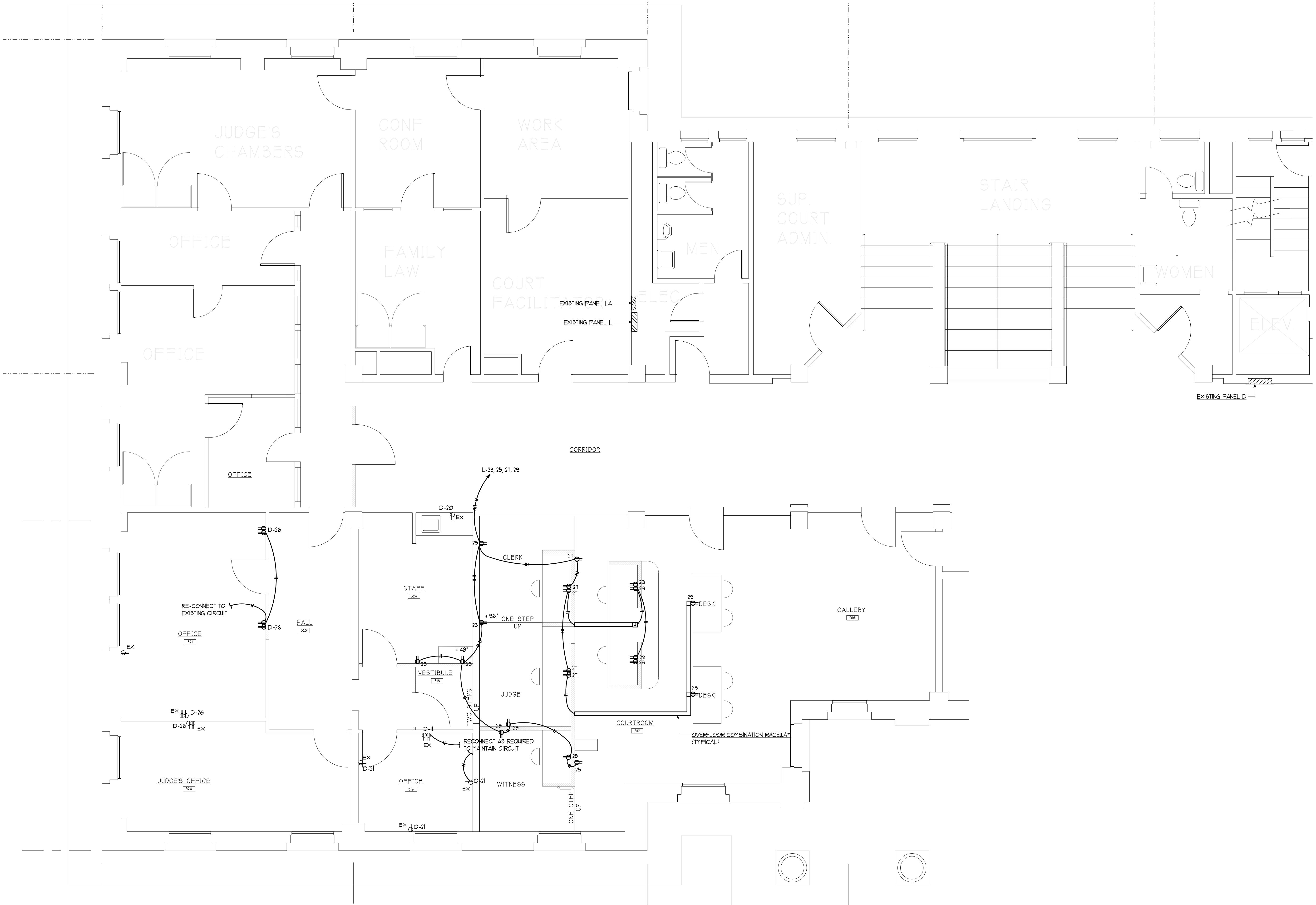
BD
CHECKED BY:

MAY 15, 2025
DATE

2405\SKAGIT COURTHOUSE
COMPUTER FILE NAME

E-2.1

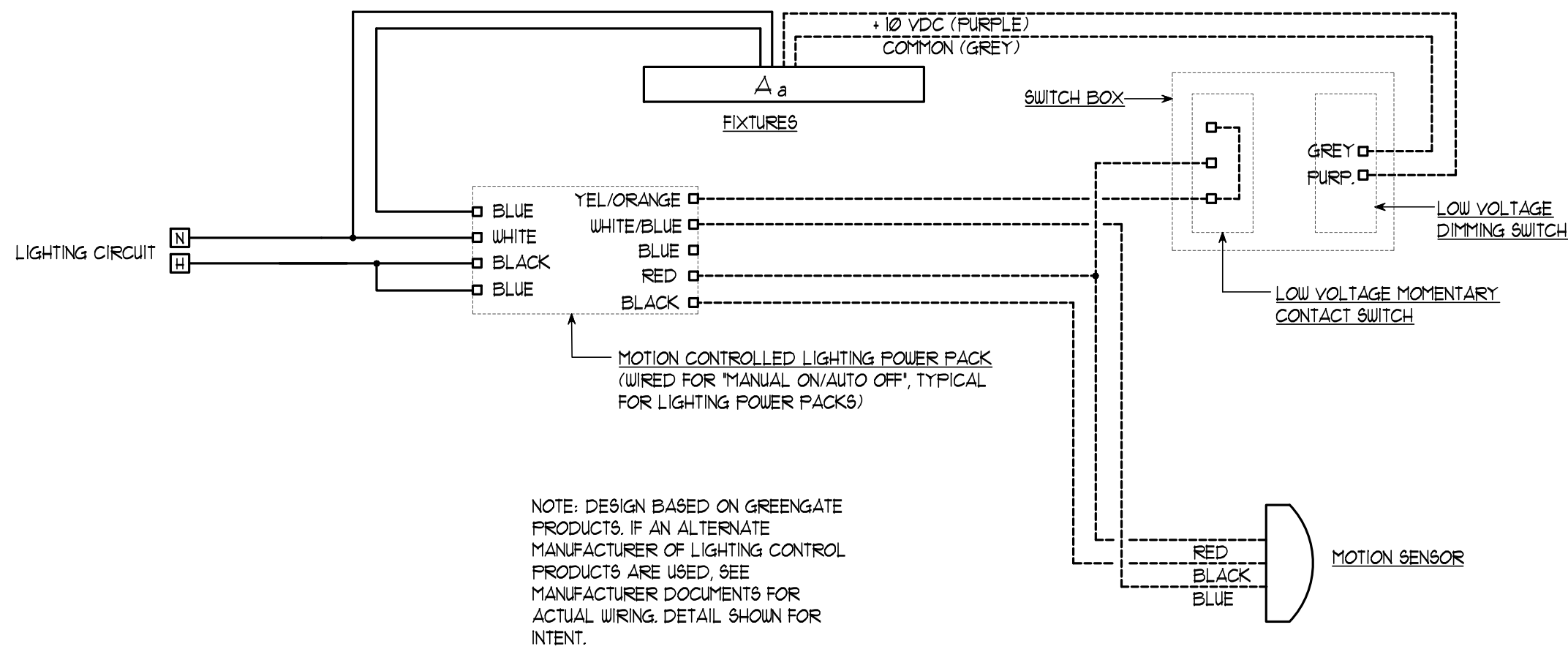
COPYRIGHT 2025 CARLETTI ARCHITECTS, P.S.



ELECTRICAL - POWER PLAN

SCALE= 1/4"=1'-0"

SCALE= 1/4"=1'-0"



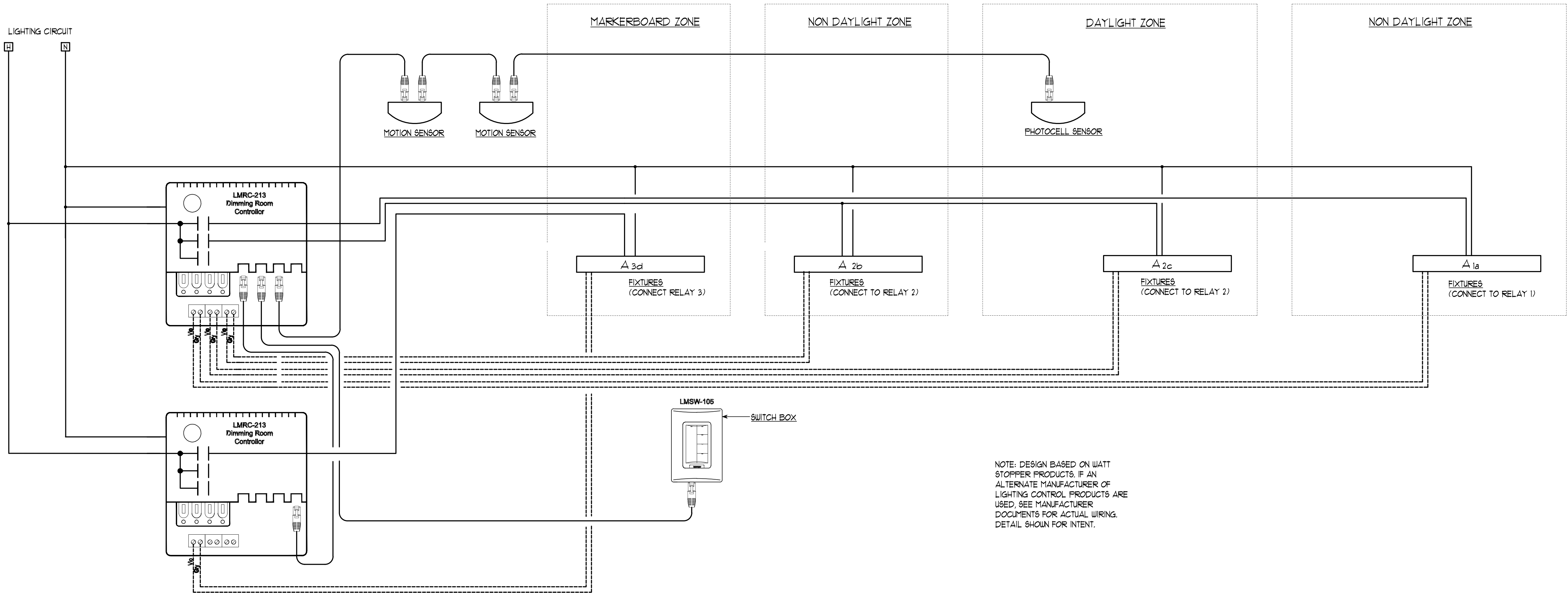
1 LIGHTING CONTROL DIAGRAM - TYPICAL ROOMS WITH POWER PACKS
NO SCALE

LIGHTING CONTROL SEQUENCE OF OPERATIONS									
Space Type:	Diagram	Input or Programmed Function:							NOTES
		OCC SENSOR AUTO ON	OCC SENSOR AUTO OFF	DELAY (MINUTES)	MANUAL ON SWITCH	MANUAL OFF SWITCH	MANUAL DIMMING	DAYLIGHT DIMMING	
OFFICES	1	X	20	X	X	X			
CORRIDORS		X	20	X	X				(1)
HEARING ROOM	2	X	20	X	X	X	X		
BREAK ROOMS		X	20	X	X				(1)

NOTES:
(1) WALL SWITCH OCCUPANCY SENSOR.

LIGHTING FIXTURE SCHEDULE											
TYPE	DESCRIPTION	DIMENSION	MOUNTING	COLOR TEMP.	LUMENS	VOLTS	DIMMING	MANUFACTURER & CAT. NO. (OR APPROVED EQUAL)		LOADS WATT	VA
A	LED VOLUMETRIC WRAPAROUND, DAMP LOCATION, WHITE PAINTED STEEL HOUSING, WITH ACRYLIC DIFFUSE LENS.	4' LONG	SURFACE	3500K	4800	120	NONE	COLUMBIA CRW4-LSCS LITHONIA STL4-48L-LP835 WILLIAMS 39-4-S-L30/835-A ILP FFW4-40-35-01		40	42
B	LED VOLUMETRIC WRAPAROUND, DAMP LOCATION, WHITE PAINTED STEEL HOUSING, WITH ACRYLIC DIFFUSE LENS.	4' LONG	SURFACE	3500K	3000	120	NONE	COLUMBIA CRW4-LSCS LITHONIA STL4-30L-LP835 WILLIAMS 39-4-S-L30/835-A ILP FFW4-30-35-01		25	26
C	CEILING FLUSH MOUNT ROUND, 7" ROUND WHITE FINISH, DIMMABLE.	7" ROUND	SURFACE	3000K	820	120	NONE	SATCO NUVO S9331 ASL SAS-7-WHITE-13 5-3000K-D7 ESSENTIAL SMT-3K7-14-900W DALI CFLEDRO6-WH LITON LCMPTD7RWT30		14	14
D	LED LENSED UNDERCOUNTER, WHITE POWDER COATED HOUSING, STEEL FRAME AND ACRYLIC DIFFUSER, DRY & DAMP LOCATION.	4' x 5' x 1"	SURFACE	3500K	2400	UNIV	NONE	AIREY-THOMPSON 13NX-N-35K-48-2-3 COLUMBIA CUC4-CS-ED120 HALO HU30M-SCTD-48-P WILLIAMS 1SF-4-L24/835 DMA-DRV		20	21
F	LED SCHOOLHOUSE PENDANT, BRASS MOUNTING HARDWARE WITH FROSTED GLASS LENS.	2" DIAMETER 6" PENDANT	PENDANT	3500K	2000	UNIV	NONE	LURLINE SH12STEMX-OP-TL13-RAL-35K VISA CP4515-L35K-RBA-16 WESTPORT IL-SHB-3500-80-20-STM/DM/08-GDS		20	21
L6	LED LINEAR PENDANT, DIRECT/INDIRECT OPTICS, 1 CIRCUIT, AIRCRAFT CABLE SUSPENSION, WHITE COLOR, ALUMINUM PAINTED HOUSING AND END CAPS. SUITABLE FOR CONTINUOUS ROW MOUNTING WITH ADJACENT FIXTURES.	6' x 4" x 2"	PENDANT	3500K	1200/FT 7200	120	0-10V 1%	FINELITE HP-2-P-ID-6-B-V-835-TG-F-96LG-SC-FC-FA50-C4-FE-SW LUMENWERX VIA2P-DI-HLO-FH-WIO2-SW-80CRI-750LMF-500LMF-35K-6FT0IN-D1-1C-ACS-W NEORAY S122DIP-C-865D-530U-835-C4-JB-8FO-1-DD-F-1-W WILLIAMS MX2UD-6-L4/835U/L8/835D-F-F-AC/D24-DIM		65	68
L8	LED LINEAR PENDANT, DIRECT/INDIRECT OPTICS, 1 CIRCUIT, AIRCRAFT CABLE SUSPENSION, WHITE COLOR, ALUMINUM PAINTED HOUSING AND END CAPS. SUITABLE FOR CONTINUOUS ROW MOUNTING WITH ADJACENT FIXTURES.	8' x 4" x 2"	PENDANT	3500K	1200/FT 9600	120	0-10V 1%	FINELITE HP-2-P-ID-8-B-V-835-TG-F-96LG-SC-FC-FA50-C4-FE-SW LUMENWERX VIA2P-DI-HLO-FH-WIO2-SW-80CRI-750LMF-500LMF-35K-8FT0IN-D1-1C-ACS-W NEORAY S122DIP-C-865D-530U-835-C4-JB-8FO-1-DD-F-1-W WILLIAMS MX2UD-8-L4/835U/L8/835D-F-F-AC/D24-DIM		86	91
L10	LED LINEAR PENDANT, DIRECT/INDIRECT OPTICS, 1 CIRCUIT, AIRCRAFT CABLE SUSPENSION, WHITE COLOR, ALUMINUM PAINTED HOUSING AND END CAPS. SUITABLE FOR CONTINUOUS ROW MOUNTING WITH ADJACENT FIXTURES.	10' x 4" x 2"	PENDANT	3500K	1200/FT 12,000	120	0-10V 1%	FINELITE HP-2-P-ID-10-B-V-835-TG-F-96LG-SC-FC-FA50-C4-FE-SW LUMENWERX VIA2P-DI-HLO-FH-WIO2-SW-80CRI-750LMF-500LMF-35K-10FT0IN-D1-1C-ACS-W NEORAY S122DIP-C-865D-530U-835-C4-JB-10FO-1-DD-F-1-W WILLIAMS MX2UD-10-L4/835U/L8/835D-F-F-AC/D24-DIM		107	113
Z	LED COMBINATION LIGHTED EXIT SIGN & EMERGENCY LIGHTING UNIT, SINGLE FACE, UNIVERSAL MOUNT, WHITE WITH GREEN LETTERS, POLYCARBONATE OR THERMOPLASTIC HOUSING, LED LAMPS, SELF CONTAINED NI-CAD BATTERIES & BUILT-IN DIAGNOSTICS.	10" x 12"	UNIVERSAL	N/A	N/A	120	NONE	CHLORIDE CLC-N-GW DUAL-LITE EVC-U-G-W-1 EMERGI-LITE ELXN400-G-2LED-AD EXITRONIX GVEDEC-S1-WH-G2 LITHONIA LHQM-SW-3-G-SD SURE-LITES APC-7-G		5	8

- NOTES:
- CONTRACTOR & LIGHTING FIXTURE SUPPLIER SHALL VERIFY DESCRIPTION, MOUNTING REQUIREMENTS, CATALOG NUMBERS, ETC. MATCH. ADVISE ENGINEER OF ANY CONFLICTS OR DISCREPANCIES.
 - ALL LED 0-10V DIMMING DRIVERS SHALL BE COMPATIBLE WITH MOTION CONTROLLERS, PHOTO-CONTROLLERS, DIMMER SWITCHES, ETC.



2 LIGHTING CONTROL DIAGRAM - TYPICAL ROOMS ROOM CONTROLLERS
NO SCALE

CARLETTI ARCHITECTS P.S.
architecture & planning
116 EAST FIR STREET
SUITE A
MOUNT VERNON, WA. 98273
Phone: (360) 424-0394
Fax: (360) 424-5726

K ENGINEERS INC.
208 Third Street
Lynden, WA. 98264
Bus. (360) 354-4757
FAX (360) 354-6794

SKAGIT COUNTY COURTHOUSE
HEARING ROOM REMODEL
700 S. SECOND STREET
MOUNT VERNON, WA 98273

CONTACT:
KEN HANSEN
EMAIL: khansen@co.skagit.wa.us
PHONE: (360) 416-1179



2405
PROJECT NUMBER:

REVISIONS:
05-15-25 BID SET

SHEET TITLE:
ELECTRICAL - LIGHTING
DETAILS

PJC
PROJECT ARCHITECT:
KL
DRAWN BY:
BD
CHECKED BY:
MAY 15, 2025
DATE
2405\SKAGIT COURTHOUSE
COMPUTER FILE NAME

E-3.2
COPYRIGHT 2025 CARLETTI ARCHITECTS, P.S.



CARLETTI ARCHITECTS P.S.

architecture & planning

116 EAST FIR STREET
SUITE A
MOUNT VERNON, WA. 98273

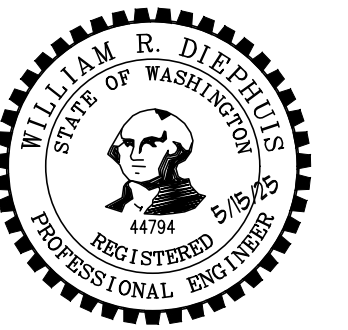
Phone: (360) 424-0394
Fax: (360) 424-5726

K ENGINEERS INC.

208 Third Street
Lynden, WA. 98264
Bus. (360) 354-4757
FAX (360) 354-6794

SKAGIT COUNTY COURTHOUSE
HEARING ROOM REMODEL
700 S. SECOND STREET
MOUNT VERNON, WA 98273

CONTACT:
KEN HANSEN
EMAIL: khansen@co.skagit.wa.us
PHONE: (360) 416-1179



2405
PROJECT NUMBER:

REVISIONS:
05-15-25 BID SET

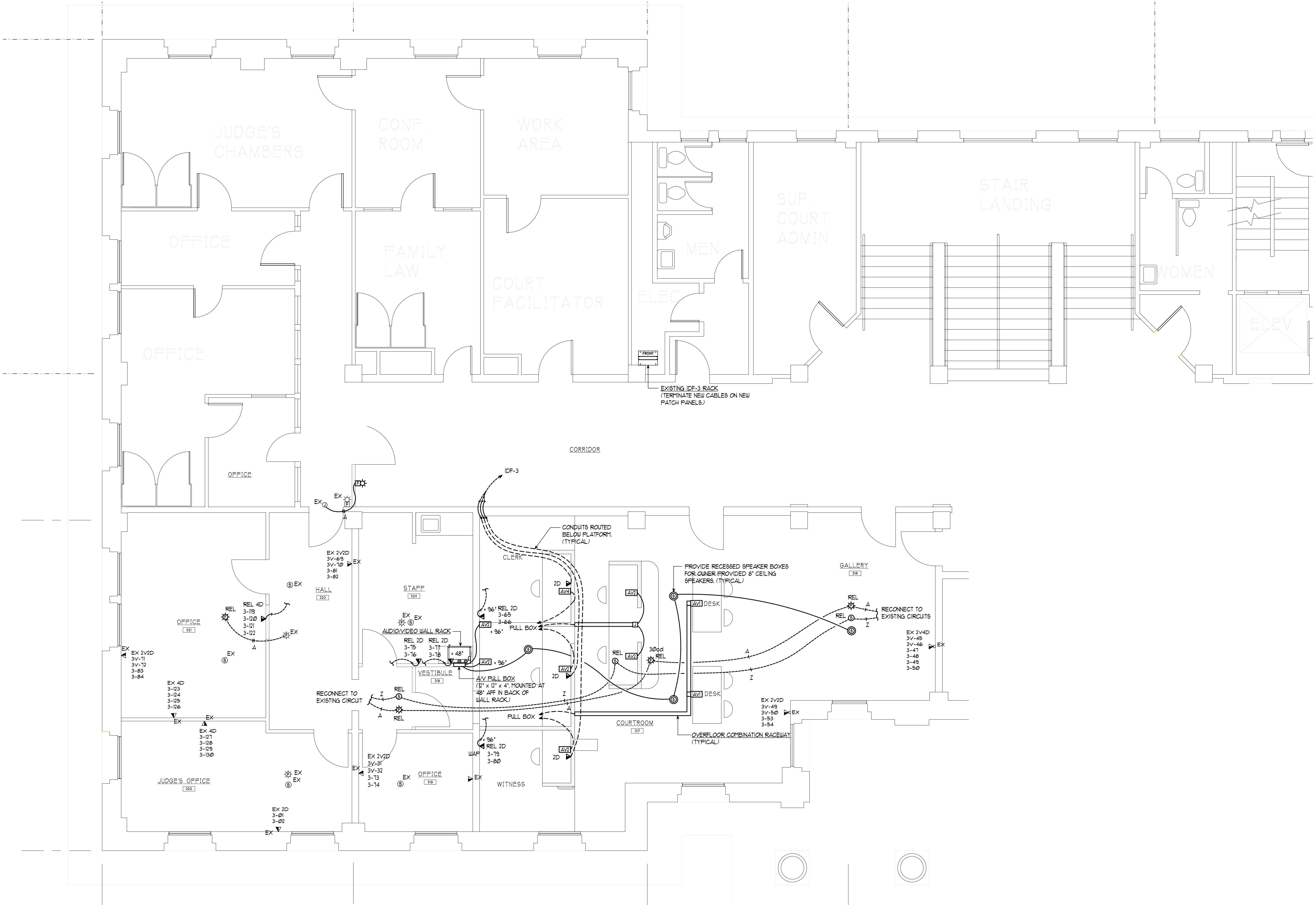
SHEET TITLE:
ELECTRICAL - ANCILLARIES
PLAN

PJC
PROJECT ARCHITECT:
KL
DRAWN BY:
BD
CHECKED BY:

MAY 15, 2025
DATE
2405\SKAGIT COURTHOUSE
COMPUTER FILE NAME

E-4.1

COPYRIGHT 2025 CARLETTI ARCHITECTS, P.S.



ELECTRICAL - ANCILLARIES PLAN

SCALE= 1/4"=1'-0"



CARLETTI ARCHITECTS P.S.

architecture & planning

116 EAST FIR STREET
SUITE A
MOUNT VERNON, WA. 98273

Phone: (360) 424-0394
Fax: (360) 424-5726

K ENGINEERS INC.

208 Third Street
Lynden, WA. 98264
Bus. (360) 354-4757
FAX (360) 354-6794

SKAGIT COUNTY COURTHOUSE
HEARING ROOM REMODEL
700 S. SECOND STREET
MOUNT VERNON, WA 98273

CONTACT:
KEN HANSEN
EMAIL: khansen@co.skagit.wa.us
PHONE: (360) 416-1179



2405
PROJECT NUMBER:

REVISIONS:
05-15-25 BID SET

SHEET TITLE:
ELECTRICAL - ANCILLARIES
DETAILS

PJC
PROJECT ARCHITECT,
KL
DRAWN BY:

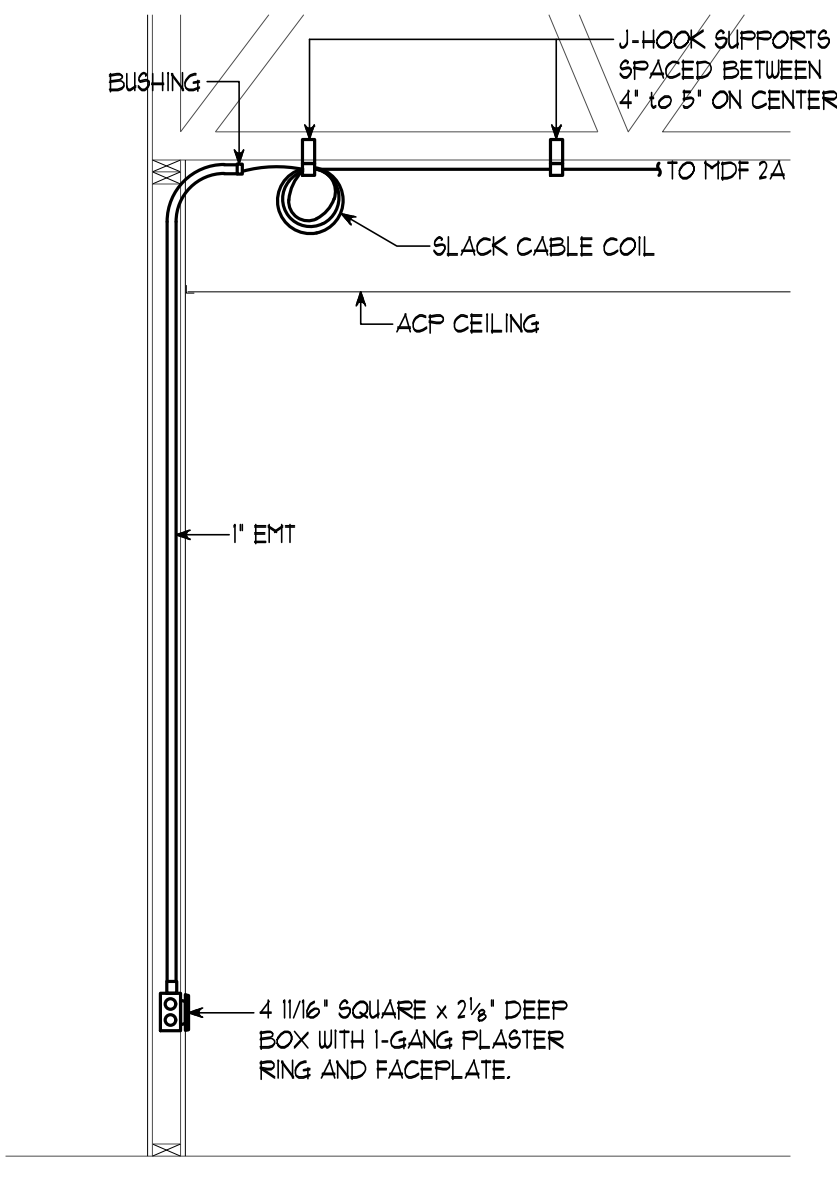
BD
CHECKED BY:

MAY 15, 2025
DATE

2405\SKAGIT COURTHOUSE
COMPUTER FILE NAME

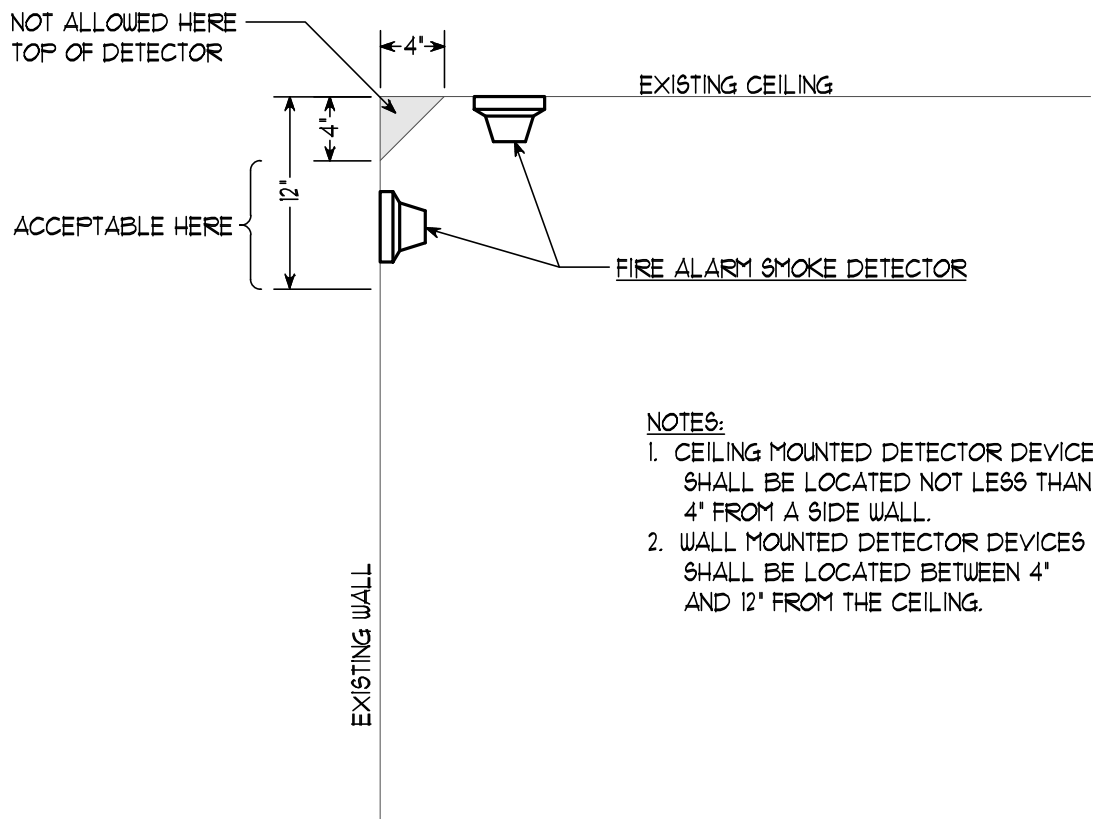
E-4.2

COPYRIGHT 2025 CARLETTI ARCHITECTS, P.S.



SECTION - TYPICAL WALL STUB

SCALE: 1/2" = 1' - 0"

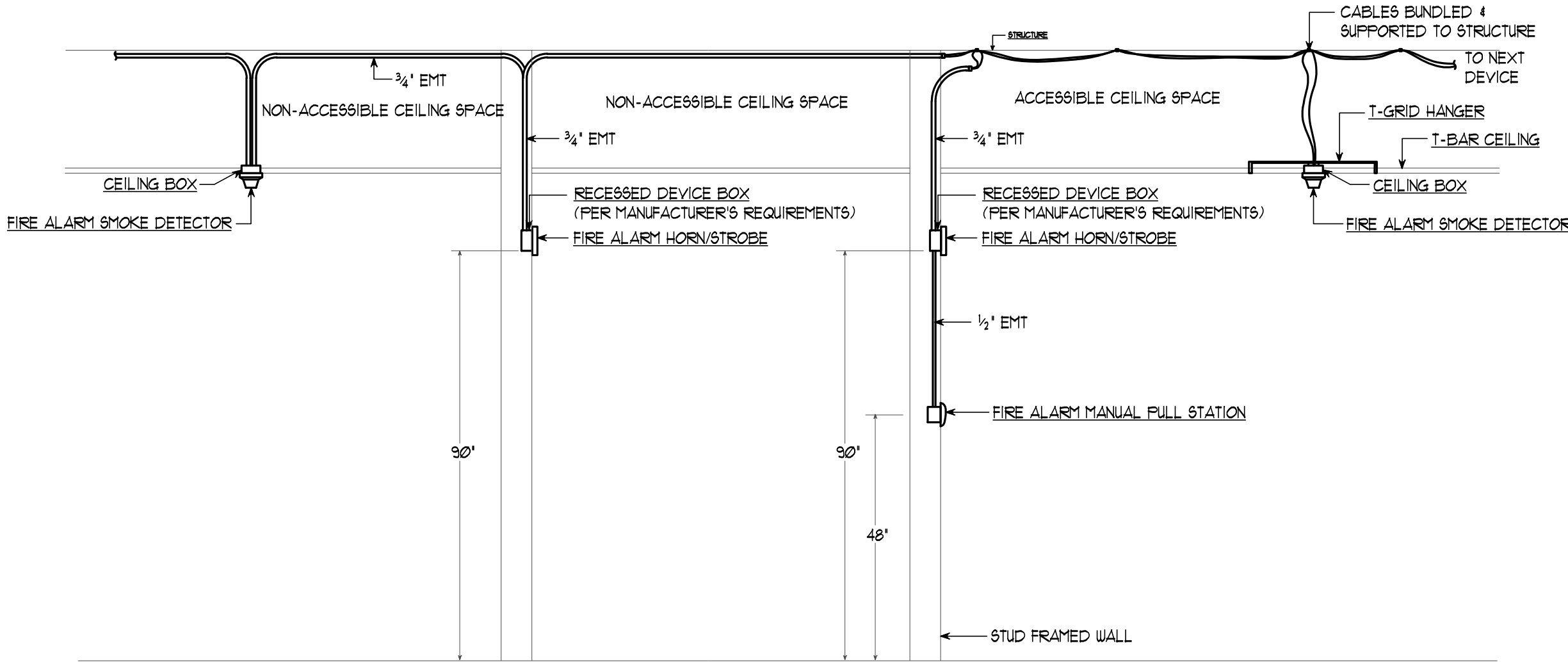


DETAIL - DETECTOR DEVICE MOUNTING

SCALE: 1" = 1' - 0"

NOTES:

1. CEILING MOUNTED DETECTOR DEVICES SHALL BE LOCATED NOT LESS THAN 4" FROM A SIDE WALL.
2. WALL MOUNTED DETECTOR DEVICES SHALL BE LOCATED BETWEEN 4" AND 12" FROM THE CEILING.



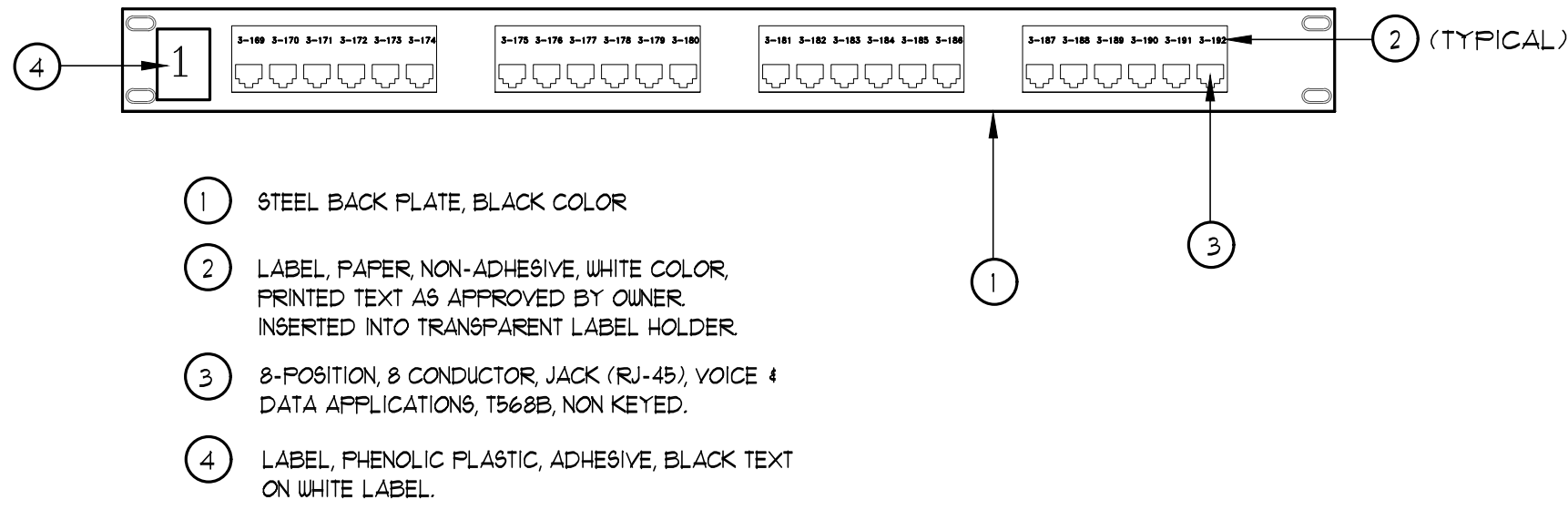
DETAIL - TYPICAL FIRE ALARM DEVICES AND RACEWAYS

SCALE: 1/2" = 1' - 0"

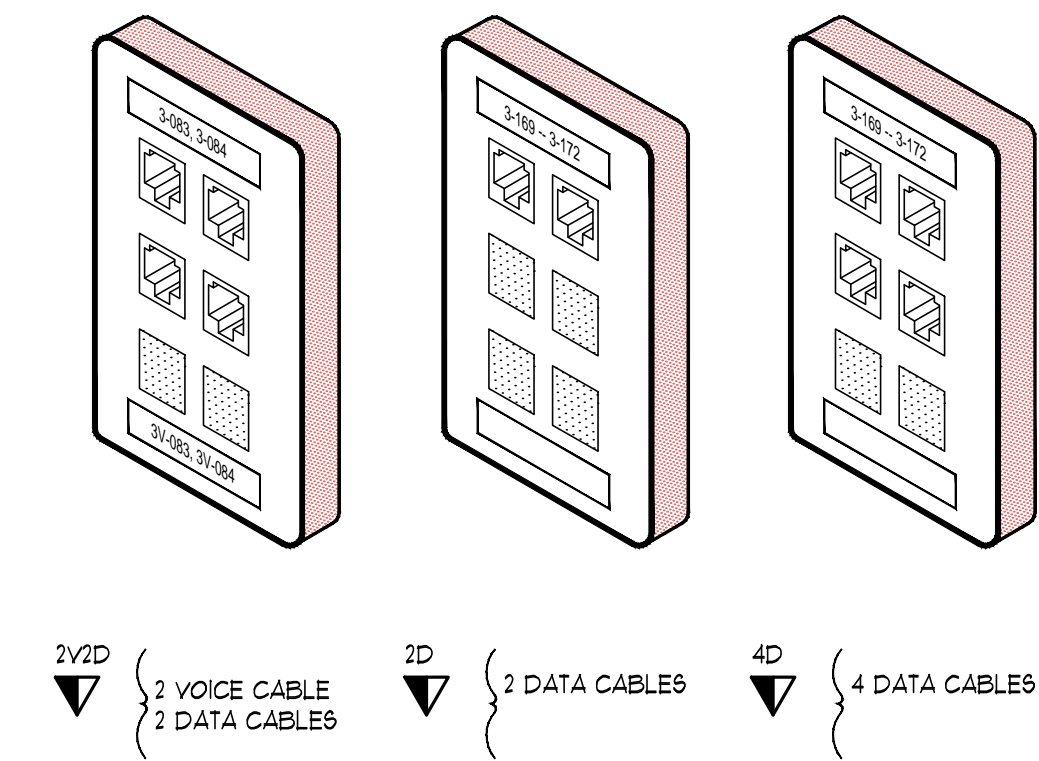


NOTES:

1. LABELING OF TERMINATION HARDWARE
- A. TERMINATION OF HORIZONTAL UTP CABLE IN THE TELECOMM. ROOM SHALL BE ON 110 TO MODULAR PATCH PANELS, 48 PORT CAPACITY.
- B. ALL HORIZONTAL UTP CABLES SHALL BE LABELED WITH CABLE ID NUMBERS ON A BLUE LABEL INSERT INSERTED IN A TRANSPARENT LABEL COVER AT THE PATCH PANEL MODULAR JACK
- C. LABELS FOR TERMINATION HARDWARE SHALL BE TYPE-WRITTEN
- D. ALL HORIZONTAL 4 PAIR CABLES SHALL BE LABELED IN ACCORDANCE WITH THE TIA/EIA-606-A LABELING STANDARD. SEE DETAIL, THIS DRAWING.
- E. ALL JACKS SHALL BE LABELED AT THE OUTLET FACEPLATE AND THE PATCH PANEL.
3. CROSS CONNECT WIRE & WIRE TROUGHS
- A. CABLE MANAGEMENT SECTIONS SHALL BE LOCATED HORIZONTALLY BETWEEN PATCH PANELS. CABLE MANAGEMENT SECTIONS SHALL BE 2U HIGH.



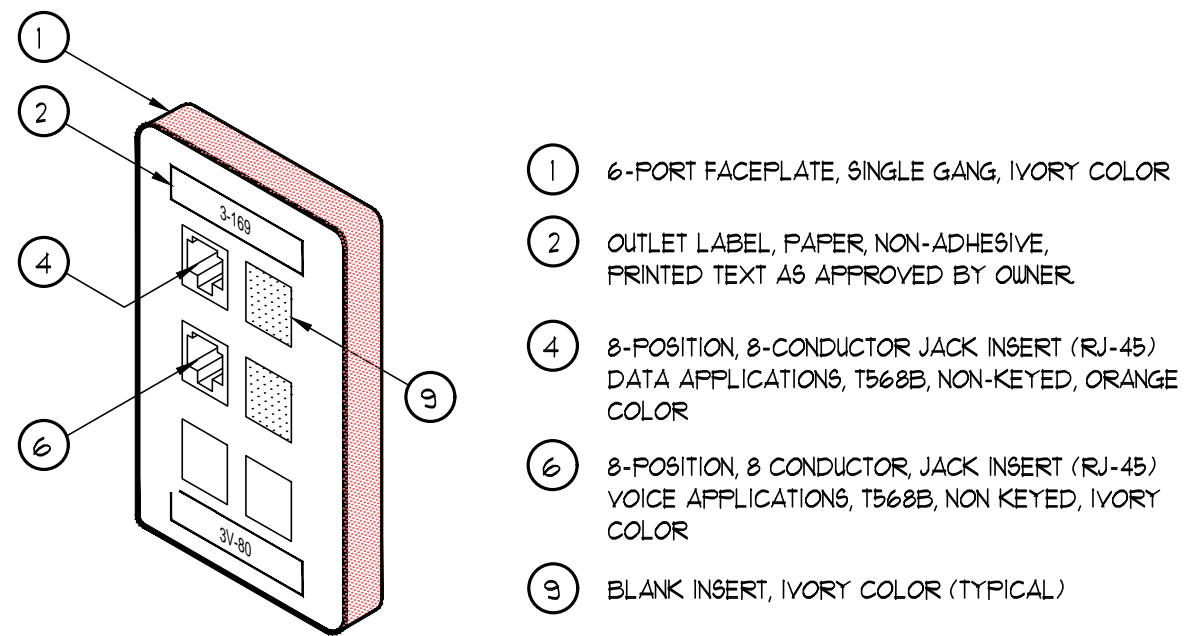
MODULAR PATCH PANEL COMPONENT LEGEND



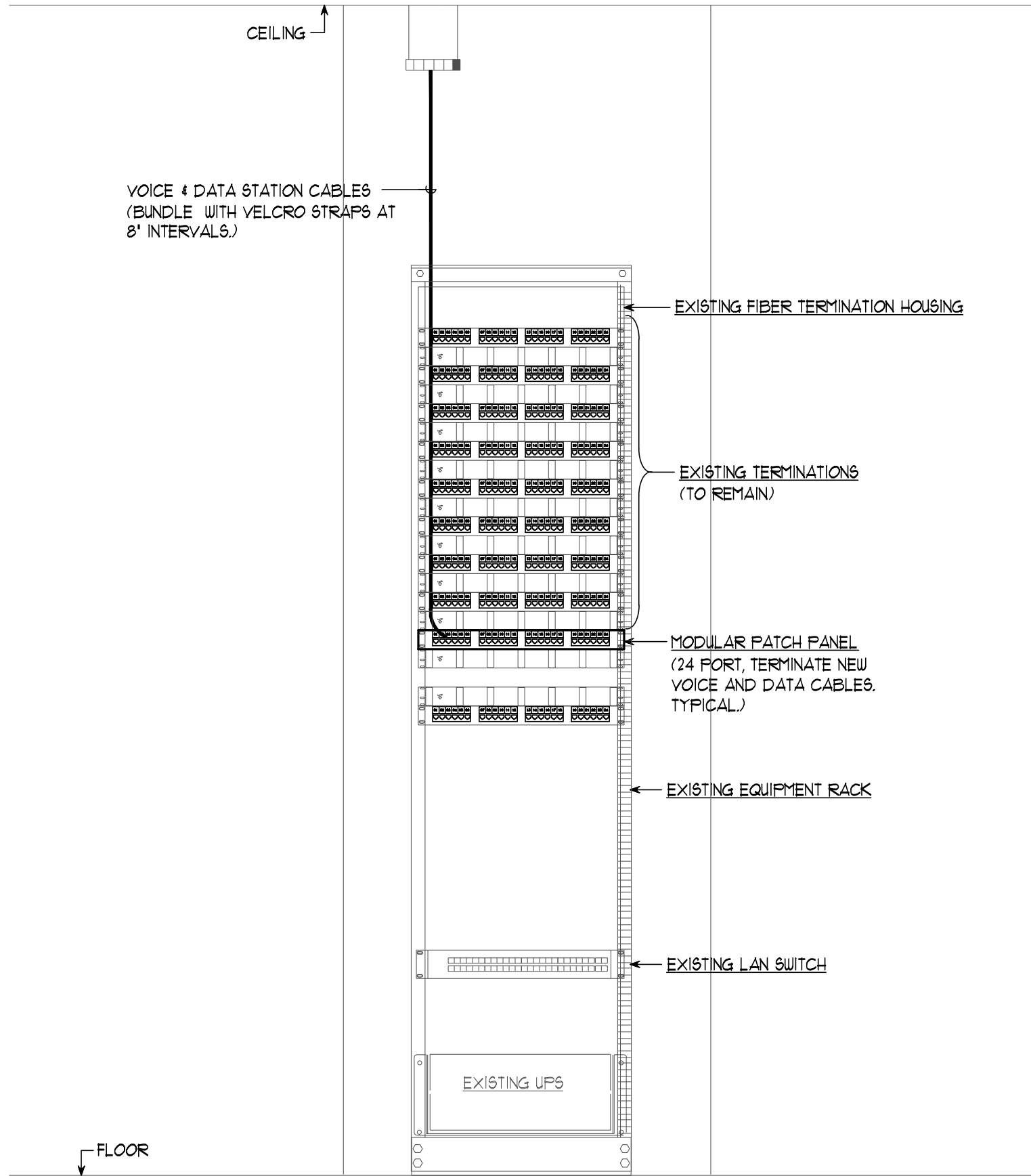
TYPICAL COMMUNICATIONS OUTLET FACEPLATE CONFIGURATIONS
NO SCALE

NOTES:

1. TERMINATE ALL CONDUCTORS OF ALL CABLES ON RECEPTACLES (JACK INSERTS).
2. CABLES FROM EACH VOICE & DATA RECEPTACLE (JACK INSERT) IN EACH OUTLET SHALL BE HOMERUN TO THE TELECOM ROOM INDICATED ON THE PLANS, WITHOUT SPLICES OR TAPS. CABLE LENGTH SHALL NOT EXCEED 300'. RE-ROUTE &/OR PROVIDE ADDITIONAL RACEWAYS AS REQUIRED IF 300' LIMITATION IS EXCEEDED.
3. OTHER OUTLET FACEPLATE CONFIGURATIONS SHALL BE SIMILAR WITH SIMILAR CABLING REQUIREMENTS.
4. TERMINATION HARDWARE SHALL BE AMP STANDARDS SERIES, NO SUBSTITUTIONS, TO MATCH EXISTING.
- FORMAT: 3-169, 3V-80, ETC
3 --- IDF ROOM IDENTIFIER
169 --- SEQUENTIAL NUMBER OF CABLE
3V --- "V" INDICATES VOICE DEDICATED CABLE



COMMUNICATIONS OUTLET COMPONENT LEGEND
NO SCALE



ELEVATION - TELECOM ROOM IDF 3
SCALE: 1" = 1' - 0"



CARLETTI ARCHITECTS P.S.

architecture & planning

116 EAST FIR STREET
SUITE A
MOUNT VERNON, WA. 98273

Phone: (360) 424-0394
Fax: (360) 424-5726

K ENGINEERS INC.

208 Third Street
Lynden, WA. 98264
Bus. (360) 354-4757
FAX (360) 354-6794

SKAGIT COUNTY COURTHOUSE
HEARING ROOM REMODEL
700 S. SECOND STREET
MOUNT VERNON, WA 98273

CONTACT:
KEN HANSEN
EMAIL: khansen@co.skagit.wa.us
PHONE: (360) 416-1179



2405
PROJECT NUMBER:

REVISIONS:
05-15-25 BID SET

SHEET TITLE:
ELECTRICAL - POWER
SYSTEM RISER DIAGRAM

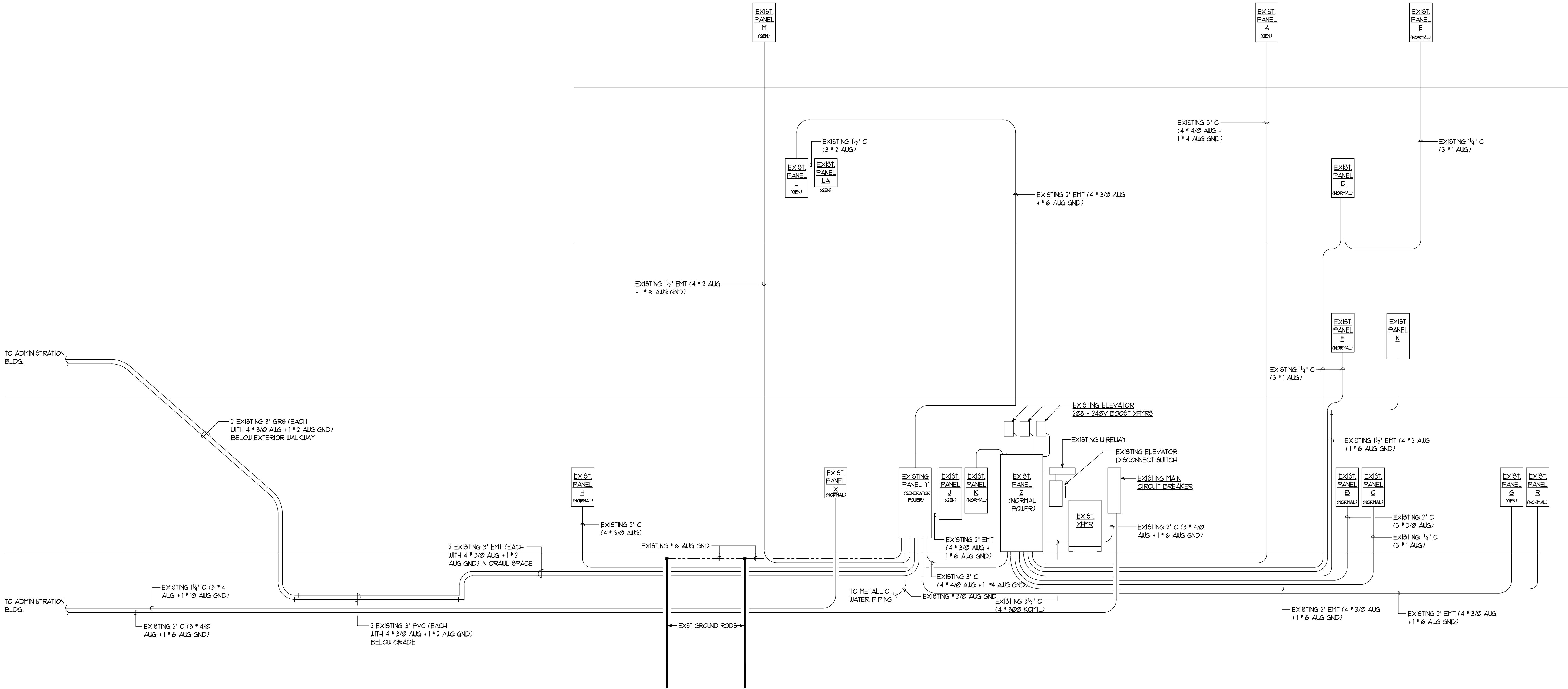
PJC
PROJECT ARCHITECT:
KL
DRAWN BY:
BD
CHECKED BY:

MAY 15, 2025
DATE

2405\SKAGIT COURTHOUSE
COMPUTER FILE NAME

E-6.1

COPYRIGHT 2025 CARLETTI ARCHITECTS, P.S.



POWER SYSTEM RISER DIAGRAM - COURTHOUSE BUILDING
NO SCALE

