

ADDENDUM NO. 2

Skagit County Public Works

February 12, 2024

Fisher Creek Restoration at Cedardale #ES70550-5 & Starbird #ES82000-3 Projects

RCO Project #21-1458R

Federal Aid # PROTECT 2029(060)

NOTICE TO PROSPECTIVE BIDDERS

NOTICE IS HEREY GIVEN BY SKAGIT COUNTY that the Contract Provision and Plans have been modified and supplemented as follows:

THE CONTRACT PLANS ARE REVISED AS FOLLOWS:

- **Remove Sheet 02 of 36 (General Notes) from the Cedardale Schedule “C” plan set and replace with the attached Revision – Addendum #2 Sheet 02 of 36 which includes the following change:**
 - **Add Item No. C74 Deficient Strength Conc. Price Adjustment, Qty (1.00) is added to the Summary of Quantities table.**
- **Remove Sheet 36 of 36 (Detour Plan) from the Cedardale Schedule “C” plan set and replace with the attached Revision - Addendum #2 Sheet 36 of 36 which includes the following change:**
 - **Removal of Sign #6 R11-3A.**

THE SPECIAL PROVISIONS ARE REVISED AS FOLLOWS:

Issued by WSDOT Local Programs/Head Quarters (2/7/2024):

- **It has been determined that the two non-discrimination GSPs Section 1-07.11(2) & Section 1-08.1(9)B that were issued last month are not required for municipalities.**

REMOVE Section 1-07.11(2) – Added to Addendum No. 1:

- ~~Page 62, line 7, insert Section 1-07.11(2) as follows:~~

~~1-07.11(2) Contractual Requirements~~

~~Section 1-07.11(2) is supplemented with the following:~~

~~(January 24, 2024)~~

~~11. The Contractor shall comply with the following nondiscrimination provisions, and the Contractor shall ensure the nondiscrimination provisions are included in all subcontracts:~~

- ~~a. **Nondiscrimination Requirement.** During the term of this Contract, the Contractor, including all subcontractors, shall not discriminate on the bases enumerated at RCW 49.60.530(3). In addition, the Contractor, including all subcontractors, shall give written notice of this nondiscrimination requirement to any labor organizations with which the Contractor, or subcontractor, has a collective bargaining or other agreement.~~

- ~~b. Obligation to Cooperate. The Contractor, including all subcontractors, shall cooperate and comply with any Washington state agency investigation regarding any allegation that the Contractor, including any subcontractor, has engaged in discrimination prohibited by this Contract pursuant to RCW 49.60.530(3).~~
- ~~c. Default. Notwithstanding any provision to the contrary, the Contracting Agency may suspend the Contract in accordance with Section 1-08.6, upon notice of a failure to participate and cooperate with any state agency investigation into alleged discrimination prohibited by this Contract, pursuant to RCW 49.60.530(3). Any such suspension will remain in place until the Contracting Agency receives notification that Contractor, including any subcontractor, is cooperating with the investigating state agency. In the event the Contractor, or subcontractor, is determined to have engaged in discrimination identified at RCW 49.60.530(3), the Contracting Agency may terminate this Contract in whole or in part in accordance with Section 1-08.10(1), and in addition to the sanctions listed in Section 1-07.11(5), the Contractor, subcontractor, or both, may be referred for debarment as provided in RCW 39.26.200. The Contractor or subcontractor may be given a reasonable time in which to cure this noncompliance, including implementing conditions consistent with any court ordered injunctive relief or settlement agreement.~~
- ~~d. Remedies for Breach. Notwithstanding any provision to the contrary, in the event of Contract termination or suspension for engaging in discrimination, the Contractor, subcontractor, or both, shall be liable for contract damages as authorized by law including, but not limited to, any cost difference between the original contract and the replacement or cover contract and all administrative costs directly related to the replacement contract, which damages are distinct from any penalties imposed under Chapter 49.60, RCW. The Contracting Agency shall have the right to deduct from any monies due to Contractor or subcontractor, or that thereafter become due, an amount for damages Contractor or subcontractor will owe Contracting Agency for default under this Provision.~~

REMOVE Section 1-08.1(9)B – Added to Addendum No. 1:

- ~~Page 71, line 35, insert Section 1-08.1(9)B as follows:~~

~~Clauses Required in Subcontracts of All Tiers~~

~~The second paragraph of Section 1-08.1(9)B is supplemented with the following:~~

~~(January 24, 2024)~~

~~16. 1-07.11 Requirements for Nondiscrimination — Item 11 from Section 1-07.11(2).~~

PROPOSAL FOR BIDDING PURPOSES:

Delete Revised Bid Proposal No. 1 and Replace With Revised Bid Proposal No. 2, Which Includes The Following Change:

- Add to Schedule C – Cedardale Road - Item No. “C-74 Deficient Strength Conc. Price Adjustment” has been added with a quantity of (1.00).

INFORMAL QUESTIONS AND REQUEST FOR CLARIFICATION

- Answers are informational only.

Bidder Questions:

Page 84, Line 23 - Removal of Obstructions:

- Details the removal of the existing box culvert, headwalls, wingwalls, fish ladder, cable rail, and concrete posts. These provisions are not specific to the limits of removal for the sheet pile. Does the sheet pile need to be fully extracted? If not, what are the minimum removal limits and considerations?
 - Response:
 - Sheet Pile must be fully extracted or cut off at elevation 32.0.

Page 125, Line 38 – Minimum Stream Flows:

- Temporary Stream Diversion, states that “the Contractor’s temporary stream diversion shall be designed to convey the following minimum flow rate of water in CFS” and then provides a table with three different CFS categories (1) Mean Daily Flow, (2) 90th Percentile Max Hourly Peak Flow, and (3) Max Hourly Peak Flow. Since these three categories have vastly different CFS values, could you please clarify which numbers are to be used as the minimum flow rate for design?
 - Response:
 - Further explanation of the anticipated stream diversion conditions is provided in the “Appendix G” Hydraulic Report - Section 2.3.3.
 - The minimum flow rate for design will be taken as the “90th percentile Max Hourly Peak Flow”.

Page 176, Line 32 – Minimum Stream Flows:

- Temporary Stream Diversion, states that “the Contractor’s temporary stream diversion shall be designed to convey the following minimum flow rate of water in CFS” and then provides a table with three different CFS categories (1) Mean Daily Flow, (2) 90th Percentile Max Hourly Peak Flow, and (3) Max Hourly Peak Flow. Since these three categories have vastly different CFS values, could you please clarify which numbers are to be used as the minimum flow rate for design?
 - Response:
 - Further explanation of the anticipated stream diversion conditions is provided in the “Appendix G” Hydraulic Report - Section 2.3.3.
 - The minimum flow rate for design will be taken as the “90th percentile Max Hourly Peak Flow”.

Page 90, Line 46 & Page 143, Line 46 - Section 5-04.3(3)D Material Transfer Device or Material Transfer Vehicle:

- MTD/MTV is required in the top 0.30 feet of HMA placed. Please confirm the requirement for the MTD/MTV for this project?
 - Response:
 - Due to the small quantity of HMA placed on this project, MTD/MTV is NOT required.

DBE Program Participation Plan Question:

- We have become aware that WSDOT has begun enforcing provisions of a document entitled “DBE Program Participation Plan”. That document apparently conflicts in several instances with the Project Documents, including but not limited to Form 272-054, which allows inclusion of mobilization, up to 10 percent, in the Dollar Amount to be Applied Toward the DBE Goal, on both Form 272-054 and Form 272-056. We believe there may be other conflicts between the Participation Plan and the Project Documents. Please instruct the bidders which provisions of the Plan are in conflict with the Project Documents, and how to proceed, or, in the alternative, please

modify the Project Documents so that they are in harmony with the Plan, or as a third alternative, please declare that the Plan is not applicable to this Project.

- Response from WSDOT Head Quarters (2/7/2024):
 - DBE plan was updated 12/15/23 and the language was removed. We recommend that agencies add the DBE plan link to their notice to bidders. So, the current language in the form is what is left. So, if it exceeds 10%, Agency needs to request justification. This will be run by OECR to see if the Mobilization exceeding 10% will be allowed. <https://wsdot.wa.gov/sites/default/files/2022-05/DBE-Participation-Plan.pdf>.

Reschedule Bid Opening from Monday, February 12, 2024, at 2:15 p.m. to **Tuesday, February 20, 2024, at 12:00 p.m.**

END OF ADDENDUM No. 2

Receipt of Addendum No. 2 must be acknowledged on page 14 of the “Proposal for Bidding Purposes” where indicated.

DATE OF BID OPENING: Tuesday, February 20, 2024, at 12:00 p.m.



Grace Kane, P.E.
Public Works Director / County Engineer

GENERAL NOTES

1. ALL WORK SHALL CONFORM TO THE CURRENT STANDARD PLANS AND 2023 STANDARD SPECIFICATIONS FOR ROAD BRIDGE AND MUNICIPAL CONSTRUCTION OF THE WASHINGTON STATE DEPARTMENT OF TRANSPORTATION (WSDOT), PROJECT SPECIFICATIONS, AND SKAGIT COUNTY STANDARDS UNLESS INDICATED OTHERWISE BY THE CONTRACT DOCUMENTS.
2. IF THE CONTRACTOR DISCOVERS ANY DISCREPANCIES BETWEEN THE PLANS AND THE EXISTING CONDITIONS ENCOUNTERED, THE CONTRACTOR SHALL IMMEDIATELY NOTIFY THE PROJECT ENGINEER.
3. DRAWING SCALES ARE FOR REFERENCE ONLY, THE DRAWINGS SHALL NOT BE SCALED TO FURNISH DIMENSIONAL INFORMATION NOT SHOWN. VERIFY ANY DISTANCE OR MEASUREMENT NOT SHOWN WITH THE ENGINEER.
4. UNDERGROUND UTILITIES ARE KNOWN TO EXIST IN THE AREA OF CONSTRUCTION. IT IS THE RESPONSIBILITY OF THE CONTRACTOR TO CONTACT ANY AND ALL UTILITIES IN THE AREA AND FIELD VERIFY THESE LOCATIONS PRIOR TO CONSTRUCTION. THE ONE-CALL NUMBER FOR UNDERGROUND UTILITIES IS 811. IT IS THE RESPONSIBILITY OF THE CONTRACTOR TO NOTIFY THE ENGINEER PROMPTLY OF ANY CONFLICT.

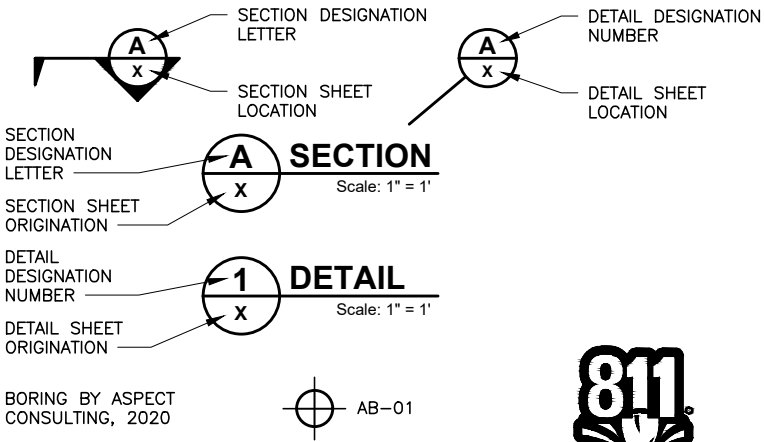
GENERAL STRUCTURAL NOTES

1. THIS STRUCTURE HAS BEEN DESIGNED IN ACCORDANCE WITH THE REQUIREMENTS OF THE AASHTO LRFD BRIDGE DESIGN SPECIFICATIONS NINTH EDITION. ALL STRUCTURAL ELEMENTS HAVE BEEN DESIGNED IN ACCORDANCE WITH THE REQUIREMENTS FOR LOAD AND RESISTANCE FACTOR DESIGN. LIVE LOADING IS HL-93.
2. THIS STRUCTURE HAS BEEN DESIGNED TO ACCOMMODATE 4 INCHES OF HMA AT 140 PCF. THIS REPRESENTS 2 INCHES INSTALLED AT THE TIME OF CONSTRUCTION AND AN ALLOWANCE FOR A FUTURE OVERLAY OF 2 INCHES.
3. SEISMIC DESIGN OF THIS STRUCTURE HAS BEEN PERFORMED FOR SITE CLASS D USING THE FOLLOWING DESIGN PARAMETERS:
- AS = 0.401g

SDS = 0.933g

SD1 = 0.499g
4. UNLESS OTHERWISE SHOWN IN THE PLANS, THE CONCRETE COVER MEASURED FROM THE FACE OF THE CONCRETE TO THE FACE OF ANY REINFORCING STEEL SHALL BE 3 INCHES WHEN AGAINST THE GROUND, 2½ INCHES TO THE TOP MAT OF THE ROADWAY SLAB, AND 2 INCHES AT ALL OTHER LOCATIONS. ALL EXPOSED EDGES SHALL HAVE A ¾ INCH CHAMFER.
5. ALL STEEL REINFORCING BARS SHALL BE ASTM A615 AND EPOXY COATED PER ASTM A775 WHERE NOTED.
6. ALL EXISTING DIMENSIONS AND ELEVATIONS SHALL BE VERIFIED IN THE FIELD BY THE CONTRACTOR PRIOR TO WORK, CONTRACTOR SHALL CONTACT PROJECT ENGINEER WITH ANY DISCREPANCIES.

SYMBOLS



SUMMARY OF QUANTITIES


Item No.	Spec.	Qty.	Unit	Item Description
C01	1-04.4	EST.	DOL.	MINOR CHANGE
C02	1-05.4 SP	1	L.S.	STRUCTURE SURVEYING
C03	1-05.4 SP	1	L.S.	ROADWAY SURVEYING
C04	1-05.18 SP	1	L.S.	RECORD DRAWINGS
C05	1-07	400	HR.	TRAINING
C06	1-07.15	1	L.S.	SPCC PLAN
C07	1-08	1	L.S.	TYPE B PROGRESS SCHEDULE
C08	1-09.7	1	L.S.	MOBILIZATION
C09	1-10	EST.	DOL.	WORK ZONE SAFETY CONTINGENCY
C10	1-10	1	L.S.	TRAFFIC CONTROL SUPERVISOR
C11	1-10	48	HR.	OTHER TRAFFIC CONTROL LABOR
C12	1-10	133	S.F.	CONSTRUCTION SIGNS, CLASS A
C13	1-10	672	HR.	PORTABLE CHANGEABLE MESSAGE SIGN
C14	1-10	1	L.S.	OTHER TEMPORARY TRAFFIC CONTROL DEVICES
C15	2-01	0.79	ACRE	CLEARING AND GRUBBING
C16	2-02	1	L.S.	REMOVAL OF STRUCTURES AND OBSTRUCTIONS
C17	2-02	286	L.F.	REMOVING WIRE FENCE
C18	2-03	390	C.Y.	ROADWAY EXCAVATION INCL. HAUL
C19	2-03	10,460	C.Y.	CHANNEL EXCAVATION INCL. HAUL
C20	2-03	890	TON	GRAVEL BORROW INCL. HAUL
C21	2-03	480	C.Y.	EMBANKMENT COMPACTION
C22	2-09	406	C.Y.	STRUCTURE EXCAVATION CLASS A INCL. HAUL
C23	2-09	1	L.S.	SHORING OR EXTRA EXCAVATION CL. A
C24	2-12	1,165	S.Y.	CONSTRUCTION GEOTEXTILE FOR PERMANENT EROSION CONTROL
C25	2-12	35	S.Y.	CONSTRUCTION GEOTEXTILE FOR SEPARATION
C26	4-04	420	TON	CRUSHED SURFACING BASE COURSE
C27	5-04	330	TON	HMA CL. 1/2 IN. PG 58H-22
C28	6-02	99	C.Y.	CONC. CLASS 4000
C29	6-02	1	L.S.	SUPERSTRUCTURE - CEDARDALE RD OVER FISHER CR BRIDGE
C30	6-02	25,940	LB.	ST. REINF. BAR
C31	6-02	320	S.Y.	BRIDGE APPROACH SLAB
C32	6-05	1	EACH	FURNISHING AND DRIVING 24" DIA. CAST-IN-PLACE CONCRETE TEST PILE
C33	6-05	306	L.F.	FURNISHING 24" DIA. CAST-IN-PLACE CONCRETE PILING
C34	6-05	54	L.F.	FURNISHING ST. PILING HP14x117
C35	6-05	9	EACH	DRIVING 24" DIA. CAST-IN-PLACE CONCRETE PILE
C36	6-08	843	S.Y.	WATERPROOF MEMBRANE
C37	6-10	420	L.F.	TRAFFIC BARRIER
C38	6-13	130	S.F.	STRUCTURAL EARTH WALL
C39	8-01	60	DAY	ESC LEAD
C40	8-01	170	S.Y.	STABILIZED CONSTRUCTION ENTRANCE
C41	8-01	2,140	L.F.	WATTLE
C42	8-01	1,140	L.F.	HIGH VISIBILITY FENCE
C43	8-01	650	L.F.	HIGH VISIBILITY SILT FENCE
C44	8-01	1,810	S.Y.	EROSION CONTROL BLANKET
C45	8-02	2,500	S.Y.	BARK OR WOOD CHIP MULCH
C46	8-02	0.57	ACRE	SEEDING AND MULCHING
C47	8-02	25	EACH	PSIPE WESTERN RED CEDAR (#2 CONT.)
C48	8-02	20	EACH	PSIPE RED ALDER (#2 CONT.)
C49	8-02	30	EACH	PSIPE VINE MAPLE (#2 CONT.)
C50	8-02	120	EACH	PSIPE OCEAN SPRAY (#2 CONT.)
C51	8-02	60	EACH	PSIPE SALMONBERRY (#2 CONT.)
C52	8-02	80	EACH	PSIPE SWORD FERN (#2 CONT.)
C53	8-02	0.57	ACRE	TOPSOIL TYPE B
C54	8-11	90	L.F.	BEAM GUARDRAIL TYPE 31
C55	8-11	24	L.F.	BEAM GUARDRAIL TYPE 31 - 8 FT. LONG POST
C56	8-11	4	EACH	BEAM GUARDRAIL TRANSITION SECTION TYPE 21
C57	8-11	1	EACH	BEAM GUARDRAIL ANCHOR TYPE 10
C58	8-11	2	EACH	BEAM GUARDRAIL TYPE 31 NON-FLARED TERMINAL
C59	8-11	90	L.F.	BEAM GUARDRAIL TYPE 31 BURIED TERMINAL TYPE 2
C60	8-11	660	L.F.	REMOVING GUARDRAIL
C61	8-12	140	L.F.	WIRE FENCE TYPE 2
C62	8-15	380	C.Y.	FILTER BLANKET
C63	8-15	15	TON	QUARRY SPALLS
C64	8-22	1,460	L.F.	PAINT LINE
C65	8-22	270	L.F.	REMOVING PAINT LINE
C66	8-26 SP	3,000	TON	STREAMBED MATERIAL
C67	8-26 SP	1,530	TON	SLOPE REINFORCEMENT
C68	8-27 SP	67	EACH	LARGE WOODY MATERIAL
C69	8-27 SP	134	EACH	BOULDER BALLAST
C70	8-31	1	L.S.	TEMPORARY STREAM DIVERSION FISHER CREEK
C71	8-31	EST.	DOL.	FISH EXCLUSION ASSISTANCE
C72	8-31 SP	EST.	DOL.	UNANTICIPATED DEWATERING
C73	8-32 SP	EST.	DOL.	UNANTICIPATED REPAIR/RESTORATION OF PUBLIC AND PRIVATE FACILITIES
C74	6-02	1	CALC.	DEFICIENT STRENGTH CONC. PRICE ADJUSTMENT
THE CONTRACTOR SHALL INCLUDE FOR COMPENSATION THE AMOUNT OF ANY TAXES PAID IN THE VARIOUS UNIT BID PRICES IN ACCORDANCE WITH SECTION 1-07.2(1)				

ABBREVIATIONS


&	AND	LT	LEFT
@	AT	LWM	LARGE WOODY MATERIAL
CL	CENTERLINE	MAX.	MAXIMUM
°/DEG	DEGREE	MFR.	MANUFACTURER
Ø	DIAMETER	MIN.	MINIMUM
'	FEET or MINUTES	MUTCD	MANUAL ON UNIFORM
PL	PLATE		TRAFFIC CONTROL DEVICES
"	INCH(ES) or SECONDS	N.	NORTH/NORTHING
AASHTO	AMERICAN ASSOCIATION OF STATE HIGHWAY AND TRANSPORTATION OFFICIALS	N/A	NOT APPLICABLE
		NAD83	NORTH AMERICAN DATUM OF 1983
ABT.	ABOUT	NAVD88	NORTH AMERICAN VERTICAL DATUM OF 1988
ABUT.	ABUTMENT	NE	NORTHEAST
ALT	ALTERNATE/ALTERNATING	N.T.S.	NOT TO SCALE
APPROX.	APPROXIMATE	NO.	NUMBER
ASTM	AMERICAN SOCIETY FOR TESTING AND MATERIALS	NW	NORTHWEST
BK TO BK	BACK-TO-BACK	O.C.	ON CENTER
BOT.	BOTTOM	OCM	OVERHEAD COMMUNICATION
C.G.	CENTER OF GRAVITY	OHE	OVERHEAD ELECTRIC
C.I.P.	CAST-IN-PLACE	OHW	ORDINARY HIGH WATER
C.J.	CONSTRUCTION JOINT	PCCP	PORTLAND CEMENT CONCRETE PAVEMENT
CJP	COMPLETE JOINT PENETRATION	PCF	POUNDS PER CUBIC FOOT
CL	CENTERLINE	PL	PLATE
CLR.	CLEARANCE/CLEAR	PVC	POLYVINYL CHLORIDE
CMP	CORRUGATED METAL PIPE	PVI	POINT OF VERTICAL INTERSECTION
CONC.	CONCRETE	PVMT.	PAVEMENT
CONT	CONTINUOUS	R.	RADIUS
CONT	CONTINUED	RCW	REVISED CODE OF WASHINGTON
CPP	CORRUGATED PLASTIC PIPE	RD.	ROAD
CSTC	CRUSHED SURFACING TOP COURSE	REINF	REINFORCEMENT
CONST	CONSTRUCTION	REQ'D	REQUIRED
CULV	CULVERT	RET	RETAINING
C.Y.	CUBIC YARD	ROW	RIGHT OF WAY
DBH	DIAMETER AT BREAST HEIGHT	RT.	RIGHT
DIA	DIAMETER	SD	STORM DRAIN
DOL	DOLLAR	SDCB	STORM DRAIN CATCH BASIN
E	EAST/EASTING	SDCULV	STORM DRAIN CULVERT
EA	EACH	SE	SOUTHEAST
E.F.	EACH FACE	SF/SQ FT	SQUARE FEET
EL./ELEV.	ELEVATION	SHLD.	SHOULDER
EQ.	EQUAL	SPA.	SPACING
EST.	ESTIMATE	SPEC.	SPECIFICATION
EX.	EXISTING	STA.	STATION
EXP	EXPANSION	STD.	STANDARD
EXT	EXTERIOR	STIR	STIRRUP
FT	FOOT	SUBSTR.	SUBSTRUCTURE
H/HOR.	HORIZONTAL	SW	SOUTHWEST
/HORZ.	HORIZONTAL	S.Y.	SQUARE YARD
HMA	HOT MIX ASPHALT	SYMM	SYMMETRIC
HWY	HIGHWAY	TCE	TEMPORARY CONSTRUCTION
IE	INVERT ELEVATION	TESC	TEMPORARY EROSION & SEDIMENT CONTROL
IN	INCHES	TYP.	TYPICAL
INCL.	INCLUDING	UCM	UNDERGROUND COMMUNICATION
IN./INT.	INTERIOR	UT	ULTRASONIC TESTING
JT	JOINT	UV	ULTRAVIOLET
KIP	KILOPOUND	V/VERT.	VERTICAL
KSI	KIP PER SQUARE INCH	W	WEST
LB./LBS.	POUND(S)	W/	WITH
L.F.	LINEAR FEET	WSDOT	WASHINGTON STATE DEPARTMENT OF TRANSPORTATION
LONGIT	LONGITUDINAL		
LRFD	LOAD AND RESISTANCE FACTOR DESIGN	YR.	YEAR
L.S.	LUMP SUM		

Skagit County
Public Works

1800 CONTINENTAL PLACE
MOUNT VERNON, WA 98273-5625
(360) 336-9400 FAX (360) 336 9478



				2/08/24	DATE
				ADDENDUM #2	REVISIONS
					NO



PROJECT NO.: ES70550-5	RCO #21-1458R
FED.AID NO.: PROTECT 2023(080)	
DESIGNED BY: KTT	DRAWN BY: RAJ
CHECKED BY: JLP	APPROVED BY: AMS
PROJECT LOCATED NEAR: CONWAY, WA	
SECTION 28, TOWNSHIP 33 N. RANGE 4 E. W.M.	

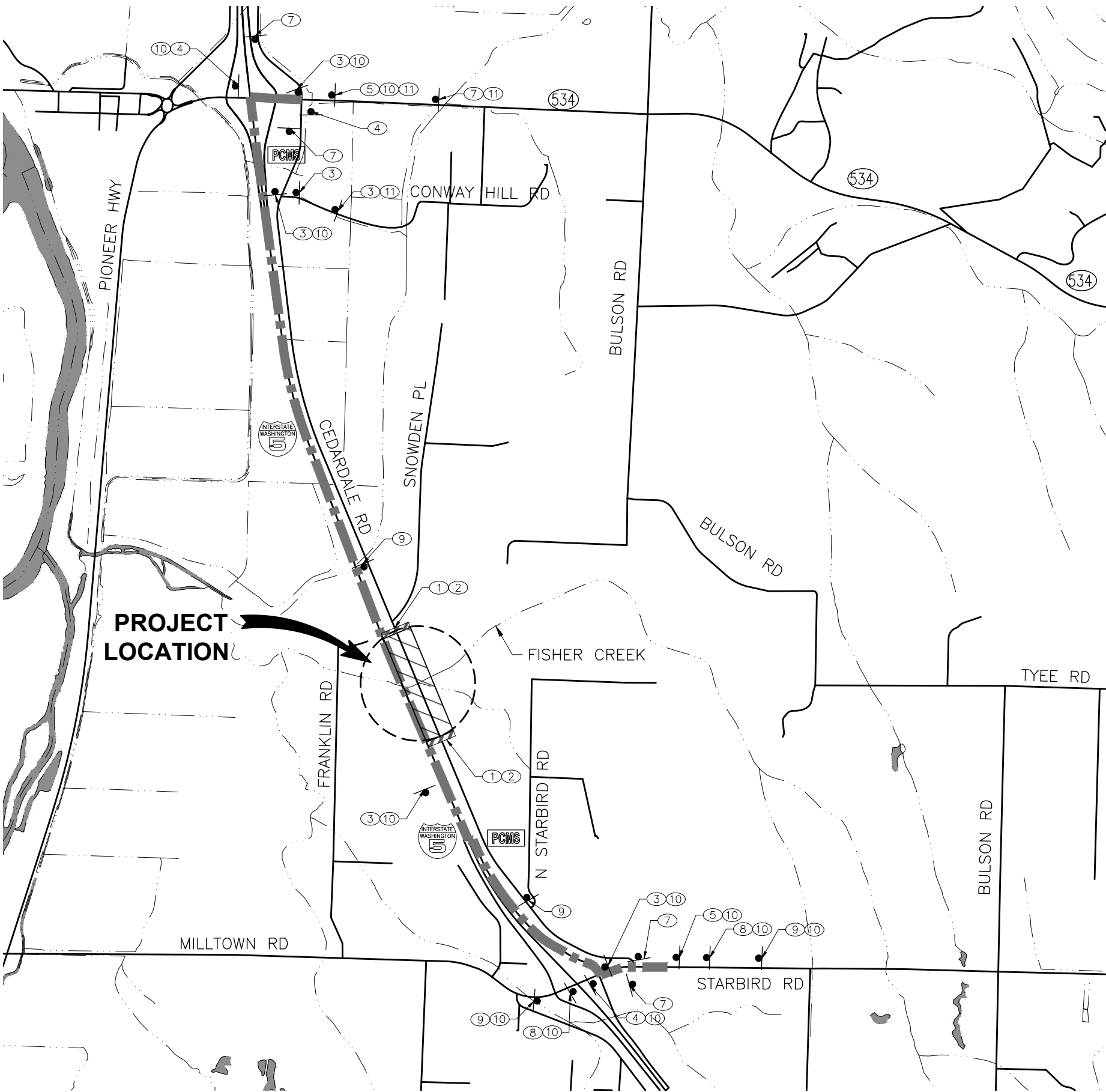
FISHER CREEK RESTORATION
AT CEDARDALE AND STARBIRD
SCHEDULE "C" (CEDARDALE)

GENERAL NOTES

1 INCH SCALE BAR
ADJUST SCALE ACCORDINGLY

SHEET
02 OF 36

JOSH-P - December 21, 2023 - 4:06 PM - V:\20000108 (CEDARDALE RD-FISHER CRK CULV)\02_DESIGN (V2019)\CRFC-02.DWG



LEGEND

- ROAD CLOSURE AREA
- DETOUR ROUTE
- SIGN LOCATION, POST MOUNTED
- TYPE III BARRICADE
- PORTABLE CHANGEABLE MESSAGE SIGN (FOR ADVANCED NOTIFICATION PHASE, SEE NOTE 6)

- NOTES**
1. REFER TO MUTCD FOR SIGN DETAILS.
 2. ALL CONSTRUCTION SIGNS TO BE CLASS A.
 3. EXACT LOCATION OF SIGNS TO BE DETERMINED BY ENGINEER.
 4. ALL SIGNS SHALL BE LOCATED IN ACCORDANCE WITH MUTCD CHAPTER 6.
 5. TYPE III BARRICADES TO EXTEND FULLY ACROSS ALL LANES OF TRAFFIC.
 6. COORDINATE PCMS MESSAGE CONTENTS WITH COUNTY.

SIGN LEGEND

① ROAD CLOSED R11-2 BLACK ON WHITE 48" X 30" INSTALLED ON TYPE III BARRICADE	⑧ DETOUR AHEAD W20-2 BLACK ON ORANGE 48" X 48"
② BYPASSING THIS SIGN IS A CRIMINAL VIOLATION OF RCW 47.48.040 SPECIAL BLACK ON WHITE 24" X 30"	⑨ ROAD CLOSED AHEAD W20-3 BLACK ON ORANGE 48" X 48"
③ DETOUR M4-9 (R) BLACK ON ORANGE 30" X 24"	⑩ CEDARDALE RD W16-8P BLACK ON ORANGE 18" X 8"
④ DETOUR M4-9 (L) BLACK ON ORANGE 30" X 24"	⑪ SOUTHBOUND W16-8P BLACK ON ORANGE 18" X 8"
⑤ DETOUR M4-9 (UP) BLACK ON ORANGE 30" X 24"	
⑥ ROAD CLOSED NO SIGN #6 IN CONTRACT	
⑦ CEDARDALE ROAD CLOSED 1 MILE AHEAD M4-9 MOD BLACK ON ORANGE 60" X 48"	

811
Know what's below
Call before you dig

kpff
1601 5th Avenue, Suite 1600
Seattle, WA 98101
206.622.5822
www.kpff.com

SKAGIT COUNTY PUBLIC WORKS

1800 CONTINENTAL PLACE
MOUNT VERNON, WA 98273-5625
(360) 336-9400 FAX (360) 336 9478

NO.	REVISIONS	DATE
1	ADDENDUM #2	2/08/24

PROJECT NO.: ES70500-5 RCO #21-1458R
FED AID NO.: PROTECT 2023(060)
DESIGNED BY: CHA
CHECKED BY: PDS
DRAWN BY: JO
APPROVED BY: PDS

PROJECT LOCATED NEAR:
CONWAY, WA
SECTION 28, TOWNSHIP 33 N, RANGE 4 E, W.M.

FISHER CREEK RESTORATION AT CEDARDALE AND STARBIRD SCHEDULE "C" (CEDARDALE)

DETOUR PLAN

1 INCH SCALE BAR
ADJUST SCALE ACCORDINGLY

SHEET
36 OF 36

REVISED BID PROPOSAL No. 2

Proposal for Bidding Purposes

For the Construction of:

**FISHER CREEK RESTORATION AT CEDARDALE –
SCHEDULE "C" (PROJECT #ES70550-5)**

AND

**FISHER CREEK RESTORATION AT STARBIRD –
SCHEDULE "S" (PROJECT #ES82000-3)**

RCO Project #21-1458R

Federal Aid #PROTECT 2029(060)

SKAGIT COUNTY PUBLIC WORKS



ADDENDUM NO. 2

SKAGIT COUNTY
Public Works Department
1800 Continental Place
Mount Vernon, WA 98273

REVISED BID PROPOSAL NO. 2 PROPOSAL

FISHER CREEK RESTORATION AT CEDARDALE #ES70550-5 & STARBIRD #ES82000-3 PROJECTS RCO Project #21-1458R Federal Aid # PROTECT 2029(060)

All bid envelopes must be plainly marked on the outside, **“Sealed Bid, Fisher Creek Restoration at Cedardale #ES70550-5 & Starbird #ES82000-3 Projects; RCO Project #21-1458R and Federal Aid # PROTECT 2029(060)”**

Sealed Bids will be received at the following location before the specified time:

Bids may be hand delivered to: The Reception Desk of Skagit County Commissioners Office, located at 1800 Continental Place, Mount Vernon, WA.

Bids may be mailed to: Skagit County Commissioners
1800 Continental Place, Suite 100
Mount Vernon, Washington, 98273

The bid opening date for this project will be **Tuesday, February 20, 2024**. The bids will be publicly opened and read after **12:00 p.m.** on this date.

Bid Advertisement:

Skagit Valley Herald – January 18, 2024, January 25, 2024, and February 1, 2024
Daily Journal of Commerce - January 18, 2024, January 25, 2024, and February 1, 2024

ENTIRE PROPOSAL TO BE RETURNED AS YOUR BID PACKAGE

**FAILURE TO SIGN OR COMPLETE ALL INFORMATION ON THE FORMS PROVIDED CAN
RESULT IN REJECTION OF THE PROPOSAL AS NON-RESPONSIVE**

REVISED BID PROPOSAL NO. 2

PROPOSAL

BOARD OF SKAGIT COUNTY COMMISSIONERS MOUNT VERNON, WASHINGTON 98273

Attention:

This certifies that the undersigned has examined the locations of:

Fisher Creek Restoration at Cedardale (#ES70550) and Starbird (#ES8200-3) Projects RCO #21-14589R / Federal Aid # PROTECT 2029(060)

Schedule "C" – Cedardale Road (Fisher Creek)

Schedule "S" – Starbird Road (Fisher Creek)

and that the plans, specifications and contract governing the work embraced in this improvement, and the method by which payment will be made for said work is understood. The undersigned hereby proposes to undertake and complete the work embraced in this improvement, or as much thereof as can be completed with the money available in accordance with the said plans, specifications, and contract, and the following schedule of rates and prices:

Note: for work performed on this project the contractor should refer to Section 1-07.2(1) of the contract provisions and Department of Revenue Rule #171.

(Note: Unit prices for all items, all extensions, and total amount of bid shall be shown. All entries must be typed or entered in ink.)

Item No.	Description	Spec	QTY	Unit of Measure	Unit Price	Total Price
Schedule C – Cedardale Road (Fisher Creek)						
C-1	MINOR CHANGE	1-04.4	EST.	DOL	\$_____1.00	\$_____25,000.00
C-2	STURCTURE SURVEYING	1-05.4 SP	1.00	L.S.	\$_____.	\$_____.
C-3	ROADWAY SURVEYING	1-05.4 SP	1.00	L.S.	\$_____.	\$_____.
C-4	RECORD DRAWINGS	1-05.18 SP	1.00	L.S.	\$_____.	\$_____.
C-5	TRAINING	1-07	400	HR	\$_____.	\$_____.

Fisher Creek Restoration at Cedardale #ES70550-5 and Starbird #ES82000-3
RCO Project #21-1458R; Federal Aid # PROTECT 2029(060)
February 2024
Addendum No. 2

Item No.	Description	Spec	QTY	Unit of Measure	Unit Price	Total Price
C-6	SPCC PLAN	1-07.15	1.00	L.S.	\$ _____ . ____	\$ _____ . ____
C-7	TYPE B PROGRESS SCHEDULE	1-08	1.00	L.S.	\$ _____ . ____	\$ _____ . ____
C-8	MOBILIZATION	1-09.7	1.00	L.S.	\$ _____ . ____	\$ _____ . ____
C-9	WORK ZONE SAFETY CONTINGENCY	1-10	EST.	DOL	\$ _____ 1.00	\$ _____ 25,000.00
C-10	TRAFFIC CONTROL SUPERVISOR	1-10	1.00	L.S.	\$ _____ . ____	\$ _____ . ____
C-11	OTHER TRAFFIC CONTROL LABOR	1-10	48	HR	\$ _____ . ____	\$ _____ . ____
C-12	CONSTRUCTION SIGNS CLASS A	1-10	133	S.F.	\$ _____ . ____	\$ _____ . ____
C-13	PORTABLE CHANGEABLE MESSAGE SIGN	1-10	672	HR	\$ _____ . ____	\$ _____ . ____
C-14	OTHER TEMPORARY TRAFFIC CONTROL DEVICES	1-10	1.00	L.S.	\$ _____ . ____	\$ _____ . ____
C-15	CLEARING AND GRUBBING	2-01	0.79	ACRE	\$ _____ . ____	\$ _____ . ____
C-16	REMOVAL OF STRUCTURES AND OBSTRUCTIONS	2-02	1.00	L.S.	\$ _____ . ____	\$ _____ . ____
C-17	REMOVING WIRE FENCE	2-02	286	L.F.	\$ _____ . ____	\$ _____ . ____
C-18	ROADWAY EXCAVATION INCL. HAUL	2-03	390	C.Y.	\$ _____ . ____	\$ _____ . ____

Item No.	Description	Spec	QTY	Unit of Measure	Unit Price	Total Price
C-19	CHANNEL EXCAVATION INCL. HAUL	2-03	10460	C.Y.	\$ _____ . ____	\$ _____ . ____
C-20	GRAVEL BORROW INCL. HAUL	2-03	890	TON	\$ _____ . ____	\$ _____ . ____
C-21	EMBANKMENT COMPACTION	2-03	480	C.Y.	\$ _____ . ____	\$ _____ . ____
C-22	STRUCTURE EXCAVATION CLASS A INCL. HAUL	2-09	406	C.Y.	\$ _____ . ____	\$ _____ . ____
C-23	SHORING OR EXTRA EXCAVATION CL. A	2-09	1.00	L.S.	\$ _____ . ____	\$ _____ . ____
C-24	CONSTRUCTION GEOTEXTILE FOR PERMANENT EROSION CONTROL	2-12	1165	S.Y.	\$ _____ . ____	\$ _____ . ____
C-25	CONSTRUCTION GEOTEXTILE FOR SEPARATION	2-12	35	S.Y.	\$ _____ . ____	\$ _____ . ____
C-26	CRUSHED SURFACING BASE COURSE	4-04	420	TON	\$ _____ . ____	\$ _____ . ____
C-27	HMA CL. 1/2 IN. PG 58H-22	5-04	330	TON	\$ _____ . ____	\$ _____ . ____
C-28	CONC. CLASS 4000	6-02	99	C.Y.	\$ _____ . ____	\$ _____ . ____
C-29	SUPERSTRUCTURE – CEDARDALE RD OVER FISHER CK BRIDGE	6-02	1.00	L.S.	\$ _____ . ____	\$ _____ . ____
C-30	ST. REINF. BAR	6-02	25940	LB.	\$ _____ . ____	\$ _____ . ____
C-31	BRIDGE APPROACH SLAB	6-02	320	S.Y.	\$ _____ . ____	\$ _____ . ____

Item No.	Description	Spec	QTY	Unit of Measure	Unit Price	Total Price
C-32	FURNISHING AND DRIVING 24" DIA. CAST-IN-PLACE CONCRETE TEST PILE	6-05	1.00	EA	\$ _____ . ____	\$ _____ . ____
C-33	FURNISHING 24" DIA CAST-IN-PLACE CONCRETE PILING	6-05	306	L.F.	\$ _____ . ____	\$ _____ . ____
C-34	FURNISHING ST. PILING HP14X117	6-05	54	L.F.	\$ _____ . ____	\$ _____ . ____
C-35	DRIVING 24" DIA. CAST-IN-PLACE CONCRETE PILE	6-05	9	EA	\$ _____ . ____	\$ _____ . ____
C-36	WATERPROOF MEMBRANE	6-08	843	S.Y.	\$ _____ . ____	\$ _____ . ____
C-37	TRAFFIC BARRIER	6-10	420	L.F.	\$ _____ . ____	\$ _____ . ____
C-38	STRUCTURAL EARTH WALL	6-13	130	S.F.	\$ _____ . ____	\$ _____ . ____
C-39	ESC LEAD	8-01	60	DAY	\$ _____ . ____	\$ _____ . ____
C-40	STABILIZED CONSTRUCTION ENTRANCE	8-01	170	S.Y.	\$ _____ . ____	\$ _____ . ____
C-41	WATTLE	8-01	2140	L.F.	\$ _____ . ____	\$ _____ . ____
C-42	HIGH VISIBILITY FENCE	8-01	1140	L.F.	\$ _____ . ____	\$ _____ . ____
C-43	HIGH VISIBILITY SILT FENCE	8-01	650	L.F.	\$ _____ . ____	\$ _____ . ____
C-44	EROSION CONTROL BLANKET	8-01	1810	S.Y.	\$ _____ . ____	\$ _____ . ____

Item No.	Description	Spec	QTY	Unit of Measure	Unit Price	Total Price
C-45	BARK OR WOOD CHIP MULCH	8-02	2500	S.Y.	\$ _____ . ____	\$ _____ . ____
C-46	SEEDING AND MULCHING	8-02	0.57	ACRE	\$ _____ . ____	\$ _____ . ____
C-47	PSIPE WESTERN RED CEDAR (#2 CONT.)	8-02	25	EA	\$ _____ . ____	\$ _____ . ____
C-48	PSIPE RED ALDER (#2 CONT.)	8-02	20	EA	\$ _____ . ____	\$ _____ . ____
C-49	PSIPE VINE MAPLE (#2 CONT.)	8-02	30	EA	\$ _____ . ____	\$ _____ . ____
C-50	PSIPE OCEAN SPRAY (#2 CONT.)	8-02	120	EA	\$ _____ . ____	\$ _____ . ____
C-51	PSIPE SALMONBERRY (#2 CONT.)	8-02	60	EA	\$ _____ . ____	\$ _____ . ____
C-52	PSIPE SWORD FERN (#2 CONT.)	8-02	80	EA	\$ _____ . ____	\$ _____ . ____
C-53	TOPSOIL TYPE B	8-02	0.57	ACRE	\$ _____ . ____	\$ _____ . ____
C-54	BEAM GUARDRAIL TYPE 31	8-11	90	L.F.	\$ _____ . ____	\$ _____ . ____
C-55	BEAM GUARDRAIL TYPE 31 – 8 FT. LONG POST	8-11	24	L.F.	\$ _____ . ____	\$ _____ . ____
C-56	BEAM GUARDRAIL TRANSITION SECTION TYPE 21	8-11	4.00	EA	\$ _____ . ____	\$ _____ . ____
C-57	BEAM GUARDRAIL ANCHOR TYPE 10	8-11	1.00	EA	\$ _____ . ____	\$ _____ . ____

Item No.	Description	Spec	QTY	Unit of Measure	Unit Price	Total Price
C-58	BEAM GUARDRAIL TYPE 31 NON-FLARED TERMINAL	8-11	2.00	EA	\$ _____ . ____	\$ _____ . ____
C-59	BEAM GUARDRAIL TYPE 31 BURIED TERMINAL TYPE 2	8-11	90	L.F.	\$ _____ . ____	\$ _____ . ____
C-60	REMOVING GUARDRAIL	8-11	660	L.F.	\$ _____ . ____	\$ _____ . ____
C-61	WIRE FENCE TYPE 2	8-12	140	L.F.	\$ _____ . ____	\$ _____ . ____
C-62	FILTER BLANKET	8-15	380	C.Y.	\$ _____ . ____	\$ _____ . ____
C-63	QUARRY SPALLS	8-15	15	TON	\$ _____ . ____	\$ _____ . ____
C-64	PAINT LINE	8-22	1460	L.F.	\$ _____ . ____	\$ _____ . ____
C-65	REMOVING PAINT LINE	8-22	270	L.F.	\$ _____ . ____	\$ _____ . ____
C-66	STREAMBED MATERIAL	8-26 SP	3000	TON	\$ _____ . ____	\$ _____ . ____
C-67	SLOPE REINFORCEMENT	8-26 SP	1530	TON	\$ _____ . ____	\$ _____ . ____
C-68	LARGE WOODY MATERIAL	8-27 SP	67	EA	\$ _____ . ____	\$ _____ . ____
C-69	BOULDER BALLAST	8-27 SP	134	EA	\$ _____ . ____	\$ _____ . ____
C-70	TEMPORARY STREAM DIVERSION FISHER CREEK	8-31	1.00	L.S.	\$ _____ . ____	\$ _____ . ____

Item No.	Description	Spec	QTY	Unit of Measure	Unit Price	Total Price
C-71	FISH EXCLUSION ASSISTANCE	8-31	EST.	DOL	\$ _____ 1.00	\$ _____ 5,000.00
C-72	UNANTICIPATED DEWATERING	8-31 SP	EST.	DOL	\$ _____ 1.00	\$ _____ 15,000.00
C-73	UNANTICIPATED REPAIR/RESTORATION OF PUBLIC AND PRIVATE FACILITIES	8-32 SP	EST.	DOL	\$ _____ 1.00	\$ _____ 10,000.00
C-74	DEFICIENT STRENGTH CONC. PRICE ADJUSTMENT	6-02	1.00	CALC	\$ _____ (1.00)	\$ _____ (1.00)
Subtotal Schedule C						\$ _____ .__

Item No.	Description	Spec	QTY	Unit of Measure	Unit Price	Total Price
Schedule S – Starbird Road (Fisher Creek)						
S-1	MINOR CHANGE	1-04.4	EST.	DOL	\$ _____ 1.00	\$ _____ 25,000.00
S-2	STRUCTURE SURVEYING	1-05.4 SP	1.00	L.S.	\$ _____ .__	\$ _____ .__
S-3	ROADWAY SURVEYING	1-05.4 SP	1.00	L.S.	\$ _____ .__	\$ _____ .__
S-4	RECORD DRAWINGS	1-05.18 SP	1.00	L.S.	\$ _____ .__	\$ _____ .__
S-5	TRAINING	1-07	400	HR	\$ _____ .__	\$ _____ .__
S-6	SPCC PLAN	1-07.15	1.00	L.S.	\$ _____ .__	\$ _____ .__

Item No.	Description	Spec	QTY	Unit of Measure	Unit Price	Total Price
S-7	TYPE B PROGRESS SCHEDULE	1-08.3	1.00	L.S.	\$ _____ . ____	\$ _____ . ____
S-8	MOBILIZATION	1-09.7	1.00	L.S.	\$ _____ . ____	\$ _____ . ____
S-9	WORK ZONE SAFETY CONTINGENCY	1-10	EST.	DOL	\$ _____ 1.00	\$ _____ 25,000.00
S-10	TRAFFIC CONTROL SUPERVISOR	1-10	1.00	L.S.	\$ _____ . ____	\$ _____ . ____
S-11	OTHER TRAFFIC CONTROL LABOR	1-10	48	HR	\$ _____ . ____	\$ _____ . ____
S-12	CONSTRUCTION SIGNS, CLASS A	1-10	140	S.F.	\$ _____ . ____	\$ _____ . ____
S-13	PORTABLE CHANGEABLE MESSAGE SIGN	1-10	672	HR	\$ _____ . ____	\$ _____ . ____
S-14	OTHER TEMPORARY TRAFFIC CONTROL DEVICES	1-10	1.00	L.S.	\$ _____ . ____	\$ _____ . ____
S-15	CLEARING AND GRUBBING	2-01	1.00	L.S.	\$ _____ . ____	\$ _____ . ____
S-16	ROADSIDE CLEANUP	2-01	EST.	DOL	\$ _____ 1.00	\$ _____ 5,000.00
S-17	REMOVAL OF STRUCTURES AND OBSTRUCTIONS	2-02	1.00	L.S.	\$ _____ . ____	\$ _____ . ____
S-18	ROADWAY EXCAVATION INCL. HAUL	2-03	355	C.Y.	\$ _____ . ____	\$ _____ . ____
S-19	GRAVEL BORROW INCL. HAUL	2-03	1020	TON	\$ _____ . ____	\$ _____ . ____
S-20	EMBANKMENT COMPACTION	2-03	550	C.Y.	\$ _____ . ____	\$ _____ . ____

Item No.	Description	Spec	QTY	Unit of Measure	Unit Price	Total Price
S-21	CHANNEL EXCAVATION INCL. HAUL	2-03	907	C.Y.	\$ _____ . ____	\$ _____ . ____
S-22	STRUCTURE EXCAVATION CLASS A INCL. HAUL	2-09	2590	C.Y.	\$ _____ . ____	\$ _____ . ____
S-23	SHORING OR EXTRA EXCAVATION CL. A	2-09	1.00	L.S.	\$ _____ . ____	\$ _____ . ____
S-24	CRUSHED SURFACING BASE COURSE	4-04	300	TON	\$ _____ . ____	\$ _____ . ____
S-25	CRUSHED SURFACING TOP COURSE	4-04	100	TON	\$ _____ . ____	\$ _____ . ____
S-26	HMA CL. 1/2 IN. PG 58H-22	5-04 SP	235	TON	\$ _____ . ____	\$ _____ . ____
S-27	GRAVEL BACKFILL FOR WALL	6-02	118	C.Y.	\$ _____ . ____	\$ _____ . ____
S-28	ST. REINF. BAR	6-02	14200	LB	\$ _____ . ____	\$ _____ . ____
S-29	CONC. CLASS 4000 FOR SUBSTRUCTURE	6-02	79	C.Y.	\$ _____ . ____	\$ _____ . ____
S-30	DEFICIENT STRENGTH CONC. PRICE ADJUSTMENT	6-02	1.00	CALC	\$ _____ (1 .00)	\$ _____ (1 .00)
S-31	STRUCTURAL EARTH WALL	6-13	2820	S.F.	\$ _____ . ____	\$ _____ . ____
S-32	GRAVEL BORROW FOR STRUCTURAL EARTH WALL INCL. HAUL	6-13	2890	C.Y.	\$ _____ . ____	\$ _____ . ____
S-33	UNANTICIPATED MINOR STRUCTURAL EARTH WALL REVISIONS	6-13 SP	EST.	DOL	\$ _____ 1.00	\$ _____ 15,000.00
S-34	CONTRACTOR DESIGNED BURIED STRUCTURE NO. 1	6-20	1.00	L.S.	\$ _____ . ____	\$ _____ . ____

Item No.	Description	Spec	QTY	Unit of Measure	Unit Price	Total Price
S-35	UNANTICIPATED MINOR STRUCTURE REVISIONS	6-20 SP	EST.	DOL	\$ _____ 1.00	\$ _____ 10,000.00
S-36	UNANTICIPATED DEWATERING	6-20 SP	EST.	DOL	\$ _____ 1.00	\$ _____ 15,000.00
S-37	ESC LEAD	8-01	DAY	20	\$ _____ . ____	\$ _____ . ____
S-38	STABILIZED CONSTRUCTION ENTRANCE	8-01	170	S.Y.	\$ _____ . ____	\$ _____ . ____
S-39	WATTLE	8-01	2000	L.F.	\$ _____ . ____	\$ _____ . ____
S-40	EROSION/WATER POLLUTION CONTROL	8-01	EST.	DOL	\$ _____ 1.00	\$ _____ 10,000.00
S-41	HIGH VISIBILITY FENCE	8-01	1320	L.F.	\$ _____ . ____	\$ _____ . ____
S-42	SEEDING AND MULCHING	8-02	0.47	ACRE	\$ _____ . ____	\$ _____ . ____
S-43	PSIPE SITKA WILLOW (LIVE STAKES)	8-02	205	EA	\$ _____ . ____	\$ _____ . ____
S-44	PSIPE RED-OSIER DOGWOOD (LIVE STAKES)	8-02	205	EA	\$ _____ . ____	\$ _____ . ____
S-45	BEAM GUARDRAIL TYPE 31	8-11	380	L.F.	\$ _____ . ____	\$ _____ . ____
S-46	BEAM GUARDRAIL TYPE 31 NON-FLARED TERMINAL	8-11	3.00	EA	\$ _____ . ____	\$ _____ . ____
S-47	BEAM GUARDRAIL TYPE 31 BURIED TERMINAL TYPE 2	8-11	62	L.F.	\$ _____ . ____	\$ _____ . ____
S-48	WIRE FENCE TYPE 2	8-12	480	L.F.	\$ _____ . ____	\$ _____ . ____

Item No.	Description	Spec	QTY	Unit of Measure	Unit Price	Total Price
S-49	PAINT LINE	8-22	900	L.F.	\$ _____ . ____	\$ _____ . ____
S-50	STREAMBED MATERIAL	8-26 SP	517	TON	\$ _____ . ____	\$ _____ . ____
S-51	BAR MATERIAL	8-26 SP	173	TON	\$ _____ . ____	\$ _____ . ____
S-52	FINE BAND MATERIAL	8-26 SP	103	TON	\$ _____ . ____	\$ _____ . ____
S-53	LARGE WOODY MATERIAL	8-27 SP	5.00	EA	\$ _____ . ____	\$ _____ . ____
S-54	BOULDER BALLAST	8-27 SP	7.00	EA	\$ _____ . ____	\$ _____ . ____
S-55	FALL PROTECTION FENCE	8-28 SP	192	L.F.	\$ _____ . ____	\$ _____ . ____
S-56	ECOLOGY BLOCK WALL	8-30 SP	1.00	L.S.	\$ _____ . ____	\$ _____ . ____
S-57	TEMPORARY STREAM DIVERSION FISHER CREEK	8-31	1.00	L.S.	\$ _____ . ____	\$ _____ . ____
S-58	FISH EXCLUSION ASSISTANCE	8-31	EST.	DOL	\$ _____ 1.00	\$ _ 5,000.00
S-59	UNANTICIPATED REPAIR/RESTORATION OF PUBLIC AND PRIVATE FACILITIES	8-32 SP	EST.	DOL	\$ _____ 1.00	\$ _ 10,000.00
Subtotal Schedule S						\$ _____ . ____

BID PROPOSAL SUMMARY

Schedule C – Cedardale Road (Fisher Creek)	\$_____ .____
Schedule S – Starbird Road (Fisher Creek)	\$_____ .____
TOTAL BID AMOUNT	\$_____ .____

FOR WORK PERFORMED ON THIS PROJECT THE CONTRACTOR SHOULD REFER TO SECTION 1-07.2(1) OF THE CONTRACT PROVISIONS AND DEPARTMENT OF REVENUE RULE #171.

PROPOSAL – Signature Page

The bidder is hereby advised that by signature of this proposal he/she is deemed to have acknowledged all requirements and signed all certificates contained herein.

The undersigned hereby agrees to pay labor not less than the prevailing rates of wages in accordance with the requirements of the special provisions for this project.

A proposal guaranty in an amount of five percent (5%) of the total bid based upon the approximate estimate of quantities at the above prices and in the form as indicated below is attached hereto:

- ☐ CASHIER'S CHECK In the amount of \$_____Dollars
- ☐ CERTIFIED CHECK In the amount of \$_____Dollars
(Payable to Skagit County)
- ☐ PROPOSAL BOND In the amount five percent (5%) of the total bid.

Receipt is hereby acknowledged of Addendum(s) No. (s) 2, _____, & _____

Signature of Authorized Official(s):

Proposal Must Be Signed →

PRINT NAME

Firm Name: _____

Address: _____

Telephone No.: _____

State of Washington Contractor's License No. _____

UBI No. _____

Employment Security Department No. _____

Note:

- (1) This proposal form is not transferable, and any alteration of the firm's name entered hereon without prior permission from the Skagit County will be cause for considering the proposal irregular and subsequent rejection of the bid.
- (2) Please refer to Section 1-02.6 of the Standard Specifications, "Preparation of Proposal", or "Article 4" of the Instruction to Bidders for building construction jobs.

BID PROPOSAL MUST BE SIGNED.

**FAILURE TO SIGN OR COMPLETE ALL INFORMATION CAN RESULT
IN REJECTION OF THE PROPOSAL AS NON-RESPONSIVE.**

**SUBMIT THE
ENCLOSED PROPOSAL
BOND FORM WITH
YOUR PROPOSAL**

**USE OF OTHER FORMS
MAY SUBJECT YOUR
BID TO REJECTION**

PROPOSAL BOND

KNOW ALL MEN BY THESE PRESENTS, That we, _____

_____ of _____ as principal, and the
_____ a corporation duly
organized under the laws of the State of _____,
and authorized to do business in the State of Washington, as surety, are held and firmly bound unto
Skagit County in the full and penal sum of five (5) percent of the total amount of the bid proposal of
said principal for the work hereinafter described for the payment of which, well and truly to be made,
we bind our heirs, executors, administrators and assigns, and successors and assigns, firmly by these
presents.

The condition of this bond is such, that whereas the principal herein is herewith submitting his
or its sealed proposal for the following highway construction, to wit:

**Fisher Creek Restoration at Cedardale - Schedule "C" (Project #ES70550-5) and
Starbird - Schedule "S" (Project #ES82000-3)
RCO #21-14589R / Federal Aid #PROTECT 2029(060)**

said bid and proposal, by reference thereto, being made a part hereof.

NOW THEREFORE, If the said proposal bid by said principal be accepted, and the contract
be awarded to said principal, and if said principal shall duly make and enter into and execute said
contract and shall furnish bond as required by Skagit County within a period of twenty (20) days from
and after said award, exclusive of the day of such award, then this obligation shall be null and void,
otherwise it shall remain and be in full force and effect.

IN TESTIMONY WHEREOF, The principal and surety have
caused these presents to be signed and sealed this _____ day of _____, 2024.

(Principal)

(Surety)

(Attorney-in-fact)

Failure to return this Declaration as part of the bid proposal package will make the bid nonresponsive and ineligible for award.

NON-COLLUSION DECLARATION

I, by signing the proposal, hereby declare, under penalty of perjury under the laws of the United States that the following statements are true and correct:

1. That the undersigned person(s), firm, association or corporation has (have) not, either directly or indirectly, entered into any agreement, participated in any collusion, or otherwise taken any action in restraint of free competitive bidding in connection with the project for which this proposal is submitted.
2. **That by signing the signature page of this proposal, I am deemed to have signed and to have agreed to the provisions of this declaration.**

NOTICE TO ALL BIDDERS

To report rigging activities call:

1-800-424-9071

The U.S. Department of Transportation (USDOT) operates the above toll-free “hotline” Monday through Friday, 8:00 a.m. to 5:00 p.m., eastern time. Anyone with knowledge of possible bid rigging, bidder collusion, or other fraudulent activities should use the “hotline” to report such activities.

The “hotline” is part of USDOT’s continuing effort to identify and investigate highway construction contract fraud and abuse and is operated under the direction of the USDOT Inspector General. All information will be treated confidentially and caller anonymity will be respected.

Local Agency Certification for Federal-Aid Contracts

The prospective participant certifies by signing and submitting this bid or proposal, to the best of his or her knowledge and belief, that:

(1) No Federal appropriated funds have been paid or will be paid, by or on behalf of the undersigned, to any person for influencing or attempting to influence an officer or employee of any Federal agency, a Member of Congress, an officer or employee of Congress, or an employee of a Member of Congress in connection with the awarding of any Federal contract, the making of any Federal grant, the making of any Federal loan, the entering into of any cooperative agreement, and the extension, continuation, renewal, amendment, or modification of any Federal contract, grant, loan or cooperative agreement.

(2) If any funds other than Federal appropriated funds have been paid or will be paid to any person for influencing or attempting to influence an officer or employee of any Federal agency, a Member of Congress, an officer or employee of Congress, or an employee of a Member of Congress in connection with this Federal contract, grant, loan, or cooperative agreement, the undersigned shall complete and submit Standard Form-LLL, "Disclosure Form to Report Lobbying," in accordance with its instructions.

This certification is material representation of the fact upon which reliance was placed when this transaction was made or entered into. Submission of this certification is a prerequisite for making or entering into this transaction imposed by Section 1352, Title 31, U.S. Code. Any person who fails to file the required certification shall be subject to a civil penalty of not less than \$10,000 and not more than \$100,000 for each failure.

The prospective participant also agrees by submitting his or her bid or proposal that he or she shall require that the language of this certification be included in all lower tier subcontracts, which exceed \$100,000 and that all such subrecipients shall certify and disclose accordingly.



Disadvantaged Business Enterprise Utilization Certification

To be eligible for Award of this Contract the Bidder shall fill out and submit, as a supplement to its sealed Bid Proposal, a Disadvantaged Business Enterprise (DBE) Utilization Certification. The Contracting Agency shall consider as non-responsive and shall reject any Bid Proposal that does not contain a DBE Utilization Certification which properly demonstrates that the Bidder will meet the DBE participation requirements in one of the manners provided for in the proposed Contract. **Refer to the instructions on Page 2 when filling out this form or the Bid may be rejected. An example form has been provided on Page 3.** The successful Bidder's DBE Utilization Certification shall be deemed a part of the resulting Contract.

Box 1: _____ certifies that the DBE firms listed below have been contacted regarding participation on this project. If this Bidder is successful on this project and is awarded the Contract, it shall assure that subcontracts or supply agreements are executed with named DBEs. (If necessary, use additional sheets.)

Box 2: _____

Column 1 Name of DBE (See instructions)	Column 2 Project Role (See instructions)	Column 3 Description of Work (See instructions)	Column 4 Dollar Amount Subcontracted to DBE (See instructions)	Column 5 Dollar Amount to be Applied Towards Goal (See instructions)

Disadvantaged Business Enterprise _____
Condition of Award Contract Goal Box 3

Total DBE Commitment Dollar Amount _____
Box 4

5 By checking Box 5 the Bidder is stating that their attempts to solicit sufficient DBE participation to meet the COA Contract goal has been unsuccessful and good faith effort will be submitted in accordance with Section 1-02.9 of the Contract

Instructions for Disadvantaged Business Enterprise Utilization Certification Form

Box 1: Name of Bidder (Proposal holder) submitting Bid.

Box 2: Name of the Project.

Column 1: Name of the Disadvantaged Business Enterprise (DBE). DBE firms can be found using the Diversity Management and Compliance System web page: <https://wsdot.diversitycompliance.com>. Repeat the name of the DBE for each Project Role that will be performed.

Column 2: The Project Role that the DBE will be performing as follows;

- Prime Contractor
- Subcontractor
- Subcontractor (Force Account)
 - Work sublet as Force Account must be listed separately.
- Manufacturer
- Regular Dealer
 - Work sublet to a Regular Dealer must be listed separately.
 - Regular Dealer status must be approved prior to Bid submittal by the Office of Equal Opportunity, Washington State Department of Transportation, on each Contract.
- Broker
 - Work sublet to a Broker must be listed separately.

List each project role to be performed by a single DBE individually on a separate row. The role is used to determine what portion of the amount to be subcontracted (Column 4) may be applied toward meeting the goal (column 5).

Column 3: Provide a description of work to be performed by the DBE. The work to be performed must be consistent with the Certified Business Description of the DBE provided at the Diversity Management and Compliance System web page <https://wsdot.diversitycompliance.com>

- A Bidder subletting a portion of a bid item shall state “**Partial**” and describe the Work that is included.
 - For example; “Electrical (Partial) – Trenching”.
- “Mobilization” will not be accepted as a description of Work.

Column 4: List the total amount to be subcontracted to each DBE for each Project Role they are performing.

Column 5: This is the dollar amount for each line listed in the certification that the prime intends to apply towards meeting the COA Contract goal. It may be that only a portion of the amount subcontracted to a DBE in Column 4 is eligible to be credited toward meeting the goal **See Note 1, Note 2, Note 3**. The Contracting Agency will utilize the sum of this column (Box 4) to determine whether or not the bidder has met the goal. In the event of an arithmetic error in summing column 5 or an error in making appropriate reductions in the amounts in column four, **See Note 1, Note 2, Note 3**, then the mathematics will be corrected and the total (Box 4) will be revised accordingly.

Note 1: For Work sublet as Force Account the bidder **may only claim 50%** of the amount subcontracted (Column 4) towards meeting the goal (Column 5). This information will be used to demonstrate that the DBE contract goal is met at the time that the bidder submits their bid. For example; amount sublet as force account = \$100,000 (Column 4) equates to $(\$100,000 \times 50\%) = \$50,000$ (Column 5) to be applied towards the goal.

Note 2: For Work sublet to a Regular Dealer the bidder **may only claim 60%** of the cost of the materials or supplies (Column 4) towards meeting the goal (Column 5). For example; Material cost = \$100,000 (Column 4) equates to $(\$100,000 \times 60\%) = \$60,000$ (Column 5) to be applied towards the goal

Note 3: For Work sublet to a Broker the bidder **may only claim the fees** paid to a Broker towards meeting the goal (Column 4). For example; amount sublet to a broker = \$100,000 (Column 4) equates to $(\$100,000 \times \text{reasonable fee \%}) = \$$ (Column 5) to be applied towards the goal.

Box 3: Box 3 is the COA Contract goal which is the minimum required DBE participation. The goal stated in the Contract will be in terms of a dollar amount or a percentage in the Contract. When expressed as a percentage you must multiply the percentage times the sum total of all bid items as submitted in the Bidder's Proposal to determine the dollar goal and write it in Box 3. In the event of an error in this box, the Contracting Agency will revise the amount accordingly.

Box 4: Box 4 is the sum of the values in column 5. **This value must equal or exceed the COA Contract goal amount written in Box 3 or;**

Box 5: Check Box 5 if insufficient DBE Participation has been achieved and a good faith effort is required. Refer to the subsection titled, *Selection of Successful Bidder/Good Faith Efforts (GFE)* in the Contract.

See the *Disadvantaged Business Enterprise Participation* specification in the Contract for more information.

Disadvantaged Business Enterprise Utilization Certification

To be eligible for Award of this Contract the Bidder shall fill out and submit, as a supplement to its sealed Bid Proposal, a Disadvantaged Business Enterprise (DBE) Utilization Certification. The Contracting Agency shall consider as non-responsive and shall reject any Bid Proposal that does not contain a DBE Utilization Certification which properly demonstrates that the Bidder will meet the DBE participation requirements in one of the manners provided for in the proposed Contract. **Refer to the instructions on Page 2 when filling out this form or the Bid may be rejected. An example form has been provided on Page 3.** The successful Bidder's DBE Utilization Certification shall be deemed a part of the resulting Contract.

Box 1: A Plus Construction Company certifies that the DBE firms listed below have been contacted regarding participation on this project. If this Bidder is successful on this project and is awarded the Contract, it shall assure that subcontracts or supply agreements are executed with named DBEs. (If necessary, use additional sheets.)

Box 2: US 395, Spokane City Limits to Stevens County Line - Paving and Safety

Column 1 Name of DBE <small>See instructions)</small>	Column 2 Project Role <small>See instructions)</small>	Column 3 Description of Work <small>See instructions)</small>	Column 4 Dollar Amount Subcontracted to DBE <small>See instructions)</small>	Column 5 Dollar Amount to be Applied Towards Goal <small>See instructions)</small>
A Plus Construction Company	Prime	Asphalt and concrete paving, asphalt milling, preleveling and pavement repair	N/A	900,000
In the Line Services, Inc.	Subcontractor (Force Account)	Crack sealing	20,000	10,000
In the Line Services, Inc.	Subcontractor	Guideposts, joint seal, pavement markers, temporary signage, construction sign installation	200,000	200,000
The Everything Guys, LLC	Regular Dealer	Rental and sales of highway construction and related equipment and materials	100,000	60,000
Optimus Prime Trucking, Inc.	Subcontractor	Dump Trucking	50,000	50,000
Metalheads, Inc.	Manufacturer	Dowel Bars	75,000	75,000
Erosion Under Control Co.	Broker	Erosion control blankets, straw bales and wattles, sand bags	15,000	250

EXAMPLE

Disadvantaged Business Enterprise 356,968.16
Condition of Award Contract Goal Box 3

Total DBE Commitment Dollar Amount 1,295,250
Box 4

5 ☐ By checking Box 5 the Bidder is stating that their attempts to solicit sufficient DBE participation to meet the COA Contract goal has been unsuccessful and good faith effort will be submitted in accordance with Section 1-02.9 of the Contract



See Contract Provisions: *DBE Document Submittal Requirements*
Disadvantaged Business Enterprise Participation

THIS FORM SHALL ONLY BE SUBMITTED TO A DBE THAT IS LISTED ON THE CONTRACTOR'S DISADVANTAGED BUSINESS ENTERPRISE UTILIZATION CERTIFICATION.

THE CONTRACTOR SHALL COMPLETE PART A PRIOR TO SENDING TO THE DBE.

PART A: To be completed by the bidder

The entries below shall be consistent with what is shown on the Bidder's Disadvantaged Business Enterprise Utilization Certification. Failure to do so will result in Bid rejection.

Contract Title: _____

Bidder's Business Name: _____

DBE's Business Name: _____

Description of DBE's Work: _____

Dollar Amount to be Applied Towards DBE Goal: _____

Dollar Amount to be Subcontracted to DBE*: _____
*Optional Field

PART B: To be completed by the Disadvantaged Business Enterprise

As an authorized representative of the Disadvantaged Business Enterprise, I confirm that we have been contacted by the Bidder with regard to the referenced project for the purpose of performing the Work described above. If the Bidder is awarded the Contract, we will enter into an agreement with the Bidder to participate in the project consistent with the information provided in Part A of this form.

Name (printed): _____

Signature: _____

Title: _____

Address: _____ Date: _____



Disadvantaged Business Enterprise (DBE) Bid Item Breakdown Form

1. Contract Number		2. Contract Name	
3. Prime Contractor		4. Prime Contractor Representative Name	
5. Prime Contractor Representative Phone Number		6. Prime Contractor Representative Email	

Column 1 Name of UDBE (See Instructions)	Column 2 Bid Item # (See Instructions)	Column 3 Full/Partial (See Instructions)	Column 4 Quantity (See Instructions)	Column 5 Description (See Instructions)	Column 6 Unit Price (See Instructions)	Column 7 Total Unit Cost (See Instructions)	Column 8 Dollar Amount to be Applied Towards Goal (See Instructions)
Subtotal:							
Name of UDBE	Bid Item #	Full/Partial	Quantity	Description	Unit Price	Total Unit Cost	Dollar Amount to be Applied Towards Goal
Subtotal:							
Name of UDBE	Bid Item #	Full/Partial	Quantity	Description	Unit Price	Total Unit Cost	Dollar Amount to be Applied Towards Goal
Subtotal:							
Name of UDBE	Bid Item #	Full/Partial	Quantity	Description	Unit Price	Total Unit Cost	Dollar Amount to be Applied Towards Goal
Subtotal:							
Name of UDBE	Bid Item #	Full/Partial	Quantity	Description	Unit Price	Total Unit Cost	Dollar Amount to be Applied Towards Goal
Subtotal:							
TOTAL UDBE Dollar Amount:							

Instructions for Disadvantaged Business Enterprise (DBE) Bid Item Breakdown Form

Box 1: Provide the Contract Number as stated in the project information webpage.

Box 2: Provide the Name of the project as stated in the project information webpage.

Box 3: Provide the Name of the bidder (Proposal holder) submitting Bid.

Box 4: Provide the name of the prime contractor's representative available to contact regarding this form.

Box 5: Provide the phone number of the prime contractor's representative available to contact regarding this form.

Box 6: Provide the email of the prime contractor's representative available to contact regarding this form.

Column 1: Provide the Name of the Disadvantaged Business Enterprise (DBE) Firm. DBE Firms can be found using the search tools under the Firm Certification section of the Diversity Management and Compliance System (DMCS) webpage <https://wsdot.diversitycompliance.com>.

Column 2: Provide the Bid Item Number (as it appears in the engineer's estimate bid check report) available on the project information webpage.

Column 3: If the DBE is performing only part of the bid item, mark "Partial". If the DBE is performing the entire bid item, mark "Complete".

Column 4: Provide the estimated quantity for the specific bid item. For trucking firms, use hour or another unit of measure.

Column 5: Provide a description of the work to be performed by the DBE.

Column 6: Provide the price per unit and specify the type of unit used. For trucking firms, use hour or another unit of measure.

Column 7: Provide the estimated total unit cost amount per bid item.

Column 8: Provide the amount of the bid item being used to fulfil the DBE goal. The work to be performed must be consistent with the Certified Business Description of the DBE provided in the DMCS webpage <https://wsdot.diversitycompliance.com>. Mobilization up to 10% is acceptable. If mobilization is more than 10% additional information and/or justification may be requested. The total amount shown for each DBE shall match the amount shown on the DBE Utilization Certification Form.

Use Additional Sheets if necessary.



Disadvantaged Business Enterprise (DBE) Trucking Credit Form

PART A: TO BE COMPLETED BY THE BIDDER

This form is in support of the trucking commitment identified on the DBE Utilization Certification Form submitted with the proposal. Please note that DBE's must be certified prior to time of submittal.

Federal Aid #	Contract #	Project Name
If listing items by hours, or by lump sum amounts, please provide calculations to substantiate the quantities listed.		
Bid Item	Item Description	

Use additional sheets as necessary.

Bidder		Name/Title (please print)
Phone	Fax	Signature
Address		
		I certify that the above information is complete and accurate.
Email		Date

PART B: TO BE COMPLETED BY THE DBE TRUCKING FIRM

Note: DBE trucking firm participation may only be credited as DBE participation for the value of the hauling services, not for the materials being hauled unless the trucking firm is also recognized as a supplier of the materials used on the project and approved for this project as a regular dealer.

1. Type of Material expected to be hauled? _____
2. Number of fully operational trucks expected to be used on this project? _____ Tractor/trailers: _____ Dump trucks: _____
3. Number of trucks and trailers owned by the DBE that will be used on this project? _____ Tractor/trailers: _____ Dump trucks: _____
4. Number of trucks and trailers leased by the DBE that will be used on this project? _____ Tractor/trailers: _____ Dump trucks: _____

DBE Firm Name		Name/Title (please print)
Certification Number		
Phone	Fax	Signature
Address		
		I certify that the above information is complete and accurate.
Email		Date

Submit this form to in accordance with section 1-02.9 of the Contract.

Instruction to Bidder: The Bidder shall complete and submit the Disadvantaged Business Enterprise (DBE) Trucking Credit Form in accordance with Section 1-02.9 of the Contract.

INSTRUCTIONS

Please note – All Fields are required

PART A: TO BE COMPLETED BY THE BIDDER

Federal Aid: Include the project federal-aid number.

County: Specify the County where the project will take place.

Contract #: Specify the Project Contract Number which can be found in the Engineer's estimate bid check report.

Bid Item: Provide the Bid Item Number (as it appears in the engineer's estimate bid check report) for which trucking services will be utilized.

Item Description: Provide description of the bid item (as it appears in the engineer's estimate bid check report) for which trucking will be utilized.

Bidder: In this section, provide the bidder's legal name, title, Business address, Phone and email.

The bidder's representative signature is required in addition to the date the form was signed.

PART B: TO BE COMPLETED BY THE DBE TRUCKING FIRM

Question 1: Specify type of material that will be hauled (i.e. Sand, HMA, gravel)

Question 2: Specify the total number of operational trucks that will be used on the project.

Question 3: Specify the total number of operational trucks and trailers owned by the DBE that will be used on the project.

Question 4: Specify the total number of operational trucks and trailers leased by the DBE that will be used on the project.

DBE Firm: In this section, provide the DBE Firm's legal name, DBE Firm's representative legal name and title, certification Number (Found in the firm's OMWBE Profile page in the OMWBE directory), Business address, Phone, fax and email.

The DBE Firm's representative signature is required in addition to the date the form was signed.

Proposal for Incorporating Recycled Materials into the Project

In compliance with a new law that went into effect January 1, 2016 (SHB1695), the Bidder shall propose below, the total percent of construction aggregate and concrete materials to be incorporated into the Project that are recycled materials. Calculated percentages must be within the amounts allowed in Section 9-03.21(1)E, Table on Maximum Allowable Percent (By Weight) of Recycled Material, of the Standard Specifications.

Proposed total percentage: _____ percent.

Note: Use of recycled materials is highly encouraged within the limits shown above, but does not constitute a Bidder Preference, and will not affect the determination of award, unless two or more lowest responsive Bid totals are exactly equal, in which case proposed recycling percentages will be used as a tie-breaker, per the APWA GSP in Section 1-03.1 of the Special Provisions. Regardless, the Bidder's stated proposed percentages will become a goal the Contractor should do its best to accomplish. Bidders will be required to report on recycled materials actually incorporated into the Project, in accordance with the APWA GSP in Section 1-06.6 of the Special Provisions.

Bidder: _____

Signature of Authorized Official: _____

Date: _____



Contract Number		Contract Title					
Contractor		Engineer					
		Reclaimed Hot Mix Asphalt	Recycled Concrete Aggregate	Recycled Glass	Steel Furnace Slag	Other Recycled Aggregates	Contract Total Quantity
Fine Aggregate for Portland Cement Concrete	9-03.1(2)						
Coarse Aggregate for Portland Cement Concrete	9-03.1(4)						
Coarse Aggregate for Commercial Concrete	9-03.1(4)						
Aggregates for Hot Mix Asphalt	9-03.8	see below					
Ballast	9-03.9(1)						
Permeable Ballast	9-03.9(2)						
Crushed Surfacing	9-03.9(3)						
Aggregate for Gravel Base	9-03.10						
Gravel Backfill for Foundations	9-03.12(1)						
Gravel Backfill for Walls	9-03.12(2)						
Gravel Backfill for Pipe Zone Bedding	9-03.12(3)						
Gravel Backfill for Drains	9-03.12(4)						
Gravel Backfill for Drywells	9-03.12(5)						
Backfill for Sand Drains	9-03.13						
Sand Drainage Blanket	9-03.13(1)						
Gravel Borrow	9-03.14(1)						
Select Borrow	9-03.14(2)						
Common Borrow	9-03.14(3)						
Foundation Material Class A and Class B	9-03.17						
Foundation Material Class C	9-03.18						
Bank Run Gravel for Trench Backfill	9-03.19						
Other Aggregate Materials (total quantity not required)	9-03						
TOTAL (recycled materials and contract total quantity)							
		Reclaimed Hot Mix Asphalt	Reclaimed Asphalt Shingles		Steel Furnace Slag	Other Recycled Materials	Total Quantity
Hot Mix Asphalt	5-04.2						

I declare that the statements made in this document, including attachments, are complete, true and accurate.

Signed by an authorized representative of the Contractor

Contractor Representative Name		Signature	Title	Date
--------------------------------	--	-----------	-------	------

INSTRUCTIONS:

The Contractor shall report the quantity in **tons** for each type of recycled material that was used for each of the listed materials. If the Contract did not include the listed material or recycled materials were not used for this material a "0" shall be entered in the box. The Standard Specifications in Section 9-03.21 do not allow the use of recycled materials in the boxes that are shaded. If the Contract Provisions allowed and the Contractor utilized recycled materials for any of these items the amount of recycled material shall be entered in the box. The contract total quantity for each aggregate material (e.g., Fine Aggregate for Portland Cement Concrete) is the total weight in tons and includes both recycled and natural occurring materials. The total quantity for hot mix asphalt (HMA) is the total HMA weight in tons and includes recycled asphalt pavement (RAP) and new HMA materials.

Other recycled aggregates include other material sources that are utilized on a project. These sources include on-site recycling and aggregates from returned (uncured) concrete. Roadway excavation and embankment are not allowed in the quantity for other aggregate materials or other recycled aggregates.

Attach cost estimates as required in Section 1-06.6 of the Standard Specifications when the total percentage of recycled aggregate and concrete is less than 25 percent of the required amount for the entire Contract.



Certification of Compliance with Wage Payment Statutes

The bidder hereby certifies that, within the three-year period immediately preceding the bid solicitation date (**January 18, 2024**), the bidder is not a “willful” violator, as defined in RCW 49.48.082, of any provision of chapters 49.46, 49.48, or 49.52 RCW, as determined by a final and binding citation and notice of assessment issued by the Department of Labor and Industries or through a civil judgment entered by a court of limited or general jurisdiction.

I certify under penalty of perjury under the laws of the State of Washington that the foregoing is true and correct.

Bidder’s Business Name

Signature of Authorized Official*

Printed Name

Title

Date

City

State

Check One:

Sole Proprietorship ☐ Partnership ☐ Joint Venture ☐ Corporation ☐

State of Incorporation, or if not a corporation, State where business entity was formed:

If a co-partnership, give firm name under which business is transacted:

** If a corporation, proposal must be executed in the corporate name by the president or vice-president (or any other corporate officer accompanied by evidence of authority to sign). If a co-partnership, proposal must be executed by a partner.*

Local Agency Name
Local Agency Address

Local Agency Subcontractor List

Prepared in compliance with RCW 39.30.060 as amended

To Be Submitted with the Bid Proposal

Project Name _____

Failure to list subcontractors with whom the bidder, if awarded the contract, will directly subcontract for performance of the work of structural steel installation, rebar installation, heating, ventilation and air conditioning, plumbing, as described in Chapter 18.106 RCW, and electrical, as described in Chapter 19.28 RCW or naming more than one subcontractor to perform the same work will result in your bid being non-responsive and therefore void.

Subcontractor(s) with whom the bidder will directly subcontract that are proposed to perform the work of structural steel installation, rebar installation, heating, ventilation and air conditioning, plumbing, as described in Chapter 18.106 RCW, and electrical as described in Chapter 19.28 RCW must be listed below. The work to be performed is to be listed below the subcontractor(s) name.

To the extent the Project includes one or more categories of work referenced in RCW 39.30.060, and no subcontractor is listed below to perform such work, the bidder certifies that the work will either (i) be performed by the bidder itself, or (ii) be performed by a lower tier subcontractor who will not contract directly with the bidder.

Subcontractor Name _____

Work to be performed _____

Subcontractor Name _____

Work to be performed _____

Subcontractor Name _____

Work to be performed _____

Subcontractor Name _____

Work to be performed _____

Subcontractor Name _____

Work to be performed _____

* Bidder's are notified that it is the opinion of the enforcement agency that PVC or metal conduit, junction boxes, etc, are considered electrical equipment and therefore considered part of electrical work, even if the installation is for future use and no wiring or electrical current is connected during the project.