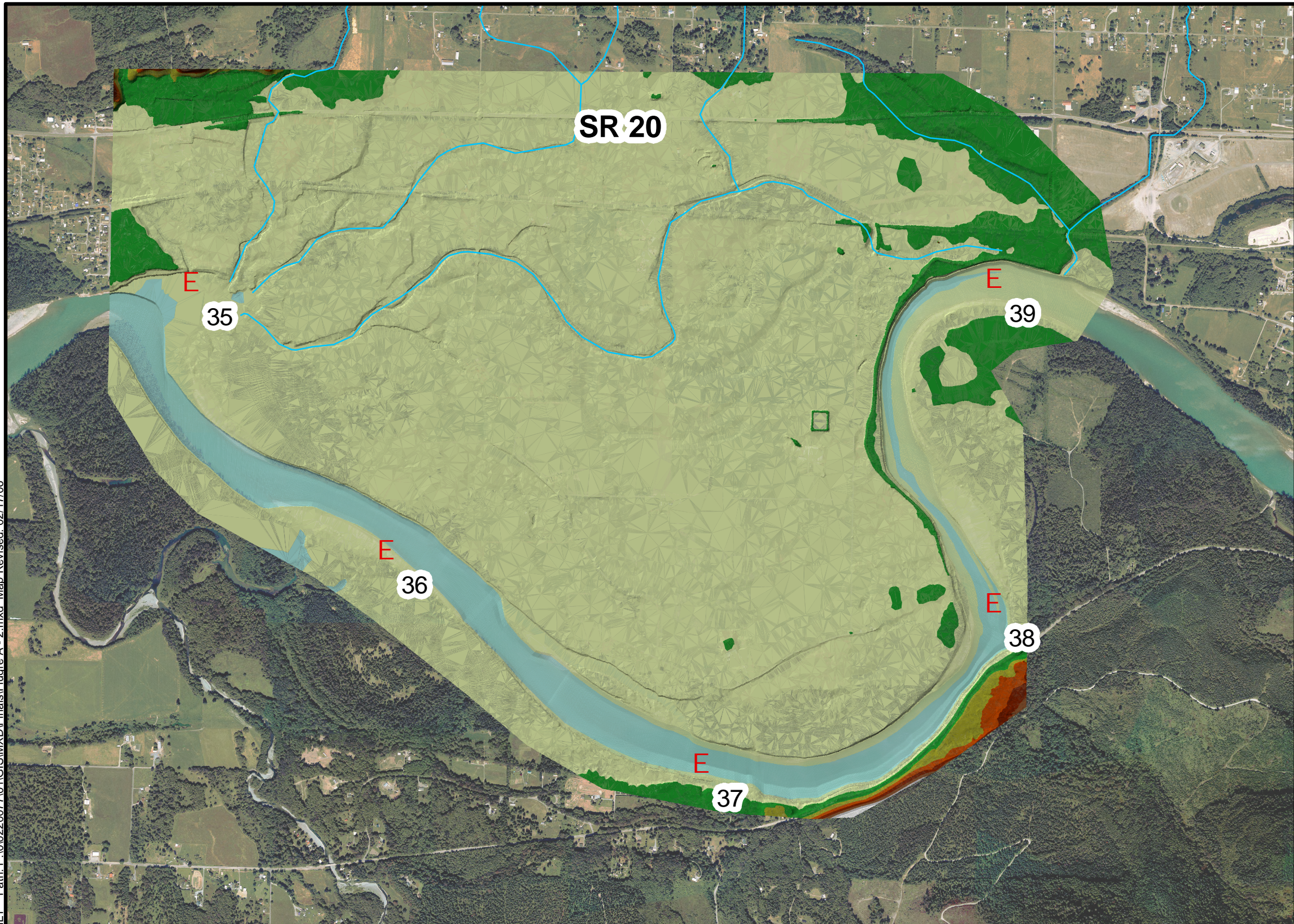


Office: BAM MLT Path: P:\02220077\01\GIS\MXD\Finals\Figure A - 2.mxd Map Revised: 02/17/06









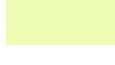


## Legend

**E** River Miles

 Creeks

## Elevation

	220.828 - 242.152
	199.504 - 220.828
	178.180 - 199.504
	156.856 - 178.180
	135.533 - 156.856
	114.209 - 135.533
	92.885 - 114.209
	71.561 - 92.885
	50.237 - 71.561

**f**

0 1,250 2,500  
Feet

**GEOENGINEERS** 

**DIGITAL TERRAIN MODEL (TIN)**

**FIGURE A - 2**

Data Sources: Interstates, state routes, and roads from TIGER 2000.  
County boundaries, cities, and waterbodies from Department of Ecology.  
Ortho Photo from Skagit County  
Lambert Conformal Conic, Washington State Plane North,  
North American Datum 1983

Note: This drawing is for informational purposes. It is intended to assist  
in showing features discussed in an attached document.  
All locations are approximate.  
It is unlawful to copy or reproduce all or any part thereof,  
whether for personal use or resale, without permission.