






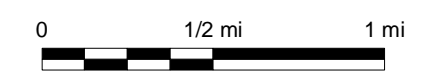
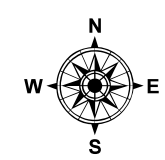


# LEGEND

-  Stormwater Plan Study Area Boundary
-  Port of Skagit Boundary
- PORT OF SKAGIT COUNTY WETLANDS**
-  Port of Skagit County WIN Buffer
-  Port of Skagit County WIN
-  Port of Skagit County NWI (National Wetland Inventory) and Air Photo Interp
- WETLANDS OUTSIDE OF PORT PROPERTY**
-  Wetland Buffer
-  NWI (National Wetland Inventory) and Air Photo Interp

The National Wetlands Inventory (NWI) Database is an inventory system developed in 1974 by U.S. Fish and Wildlife Service. NWI data is collected through stereoscopic analysis of high altitude color infrared aerial photographs. Because methodology and scope of work impose limitations on the accuracy of the data, there is an inherent margin of error. As there has been no attempt in the design of the inventory system to delineate wetland boundaries, the maps should not be used for regulatory purposes. They are useful as an initial means of identifying the general location and extent of wetlands within a region, and when used in conjunction with hydric soils maps and aerial surveys, as a starting point for developing more detailed wetland inventories.



November 2007



## BAY VIEW WATERSHED STORMWATER MANAGEMENT PLAN WETLANDS

FIGURE 2-5