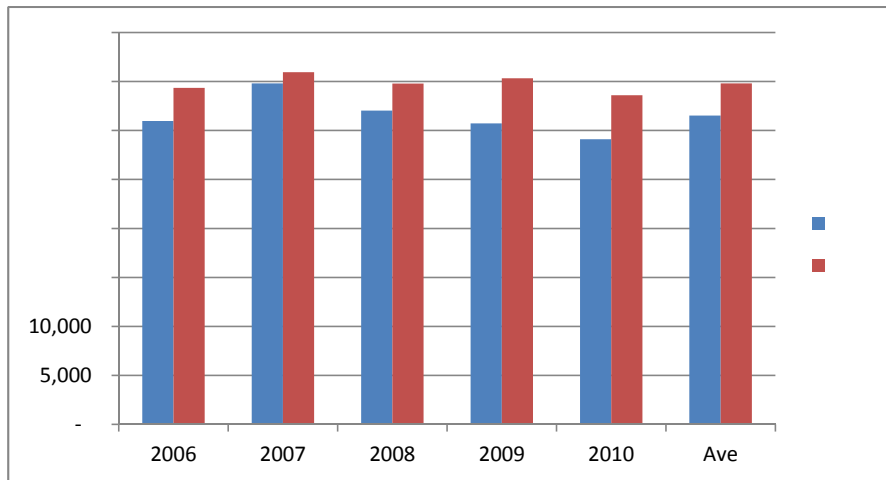


## PEAK SEASON EXPANSION RIDERSHIP ANALYSIS

	2006	2007	2008	2009	2010	Ave	Change
April	30,962	34,802	32,029	30,727	29,104	31,525	
May	34,345	35,957	34,785	35,332	33,597	34,803	3,278
September	38,271	39,294	36,742	34,745	35,603	36,931	
October	34,195	34,735	33,783	32,173	27,341	32,445	(4,486)

### APRIL/MAY



### SEPTEMBER/OCTOBER

