



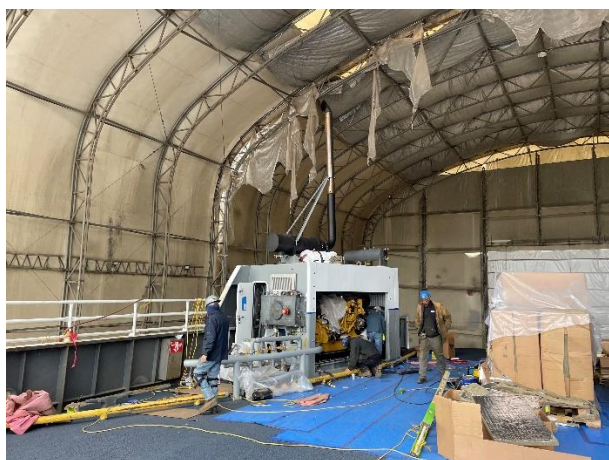
Ferry Notice

FOR IMMEDIATE RELEASE: May 16, 2025

Jenn Rogers, Communications Manager, Skagit County

jrogers@co.skagit.wa.us · 360-416-1309

Guemes Island Ferry Haul-Out Update



Engine No. 1 bolted to the new foundation.

Nichol's Brothers Boat Builders (NBBB) is running behind on the work still to be finished for the Guemes drydock. We are still aiming to return to service on May 23rd, but we have concerns about the progress made this week by the shipyard. We will re-evaluate after the weekend work is finished and keep the community updated early next week.

Before resuming regular service, we are still working closely with the U.S. Coast Guard to obtain an updated Certificate of Inspection and stability letter, ensuring everything is in top shape. Our team remains in constant communication to keep the process smooth and on track.

Here is the work in progress or has been completed:

- Engine exhaust, cooling, fuel, and electrical systems are being hooked up over the next two days.
- Outdrive brackets and surrounding areas are being painted.
- New outdrive brackets and re-conditioned propellers have been installed.
- Both new engines have been installed in the enclosures and bolted to the new foundations.
- The nonskid coating has been stripped on the car deck and the non-skid topcoat has been applied.
- The hull and internal void spaces have been painted.
- Bilge piping below deck has been relocated to accommodate the new engines.
- New engine foundations and enclosures have been fabricated.

The following tasks still need to be completed before the ferry can reenter service:

- Testing, trials, and commissioning are scheduled over the next few days.
- USCG certificate of inspection credit for required drydock work and annual inspection credit.
- Incline test and issuance of a new stability letter.



Hooking up Engine No. 2. systems

We will continue to send out updates on drydock work to the email listserv and social media channels. If you have any questions, please contact the ferry office at ferrycomments@co.skagit.wa.us or 360-293-6433. More information on the ferry can be found on our website: www.skagitcounty.net/ferry

Ferry Drydock FAQs

What has been the cause of the delay?

The drydock work included a list of required tasks and a timeline for completion, as outlined in the contract with NBBB. Once work began, the contractor identified that certain tasks—particularly the fabrication and maintenance of the engine enclosures and foundations—required more time due to the complexity. These components are critical to the overall functionality of the ferry, and ensuring proper fabrication and maintenance is essential to the vessel's long-term reliability and performance.

What is the County doing to ensure compliance with the contract?

The County is reviewing options for enforcement of the contract with the shipyard to ensure the ferry is brought back into service as soon as reasonably possible. While we understand there is frustration with the delays and the resulting impacts on the island, the most important work we are focusing on is finishing the drydock work to the standards required by the U.S. Coast Guard. The safety and reliability of our ferry is our priority during this haul-out.

How have the drydock delays impacted the ferry budget?

There have been increased costs for the drydock work because of the delays, but until we have worked through the enforcement measures within the contract, we will not know the full impact to the overall ferry budget. We are planning to send out an update after the drydock work has been completed with more information on this question.

Why are we spending all this money on the drydock instead of building a new ferry?

The drydock work is very expensive; however, raising the necessary funds and building a new ferry will still take several more years. In the meantime, we must ensure the current ferry remains safe and reliable. This means keeping up with the maintenance work required by the U.S. Coast Guard to stay in service. Several of our most recent service outages were due to engine and outdrive bracket issues. The drydock work has included the installation of brand new engines and new outdrive brackets to significantly improve the reliability of the ferry moving forward.

We appreciate hearing from you during the drydock work and we will continue to do our best to answer your questions and keep you updated as we finish up the haul-out.

