



Guemes Island Community Meeting

December 10, 2008

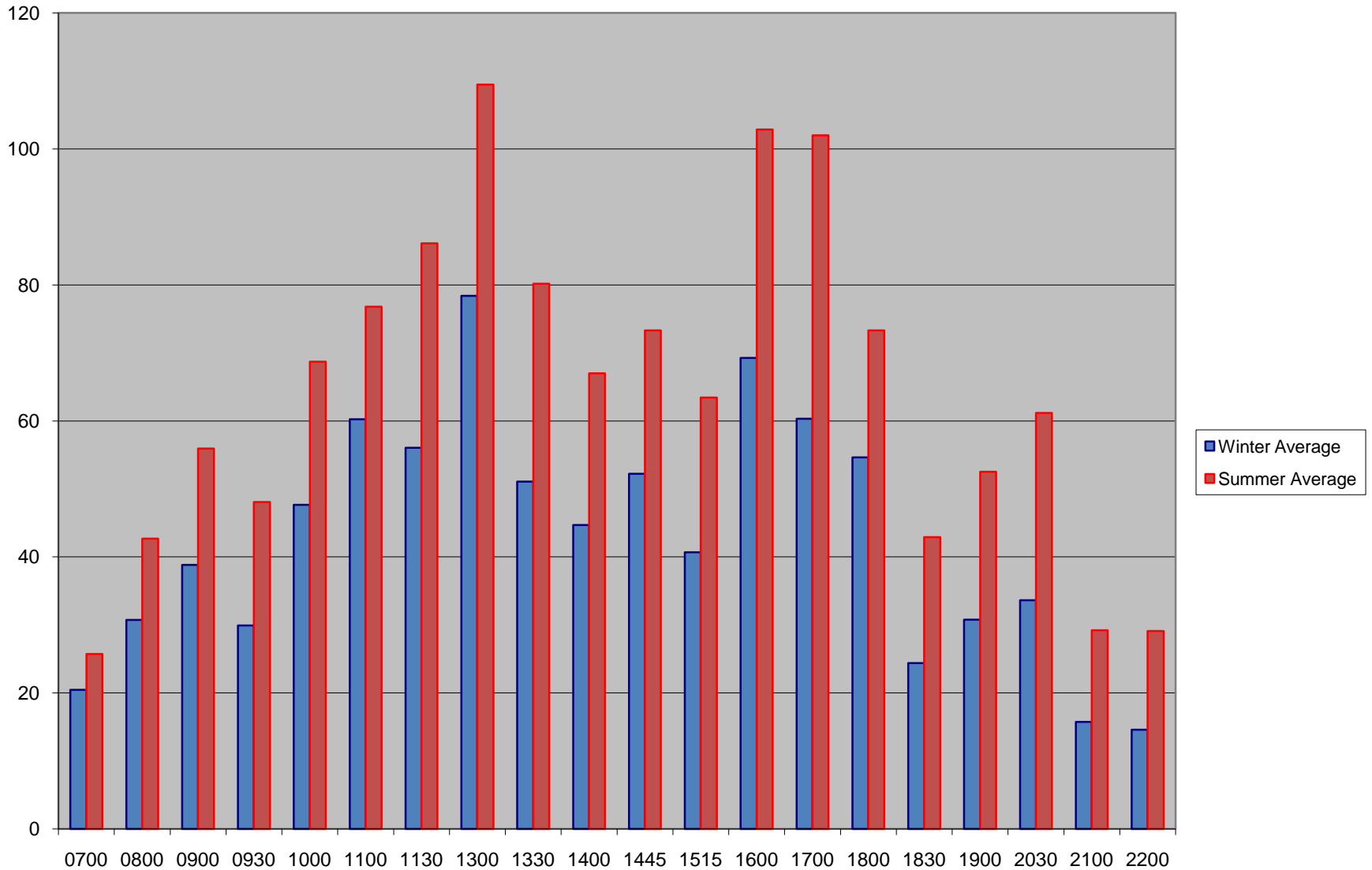


Schedule Proposal

Monday- Thursday	Friday	Saturday	Sunday
6:30 am	6:30 am	8:00 am	8:00 am
8:00 pm	10:00 pm	10:00 pm	8:00 pm

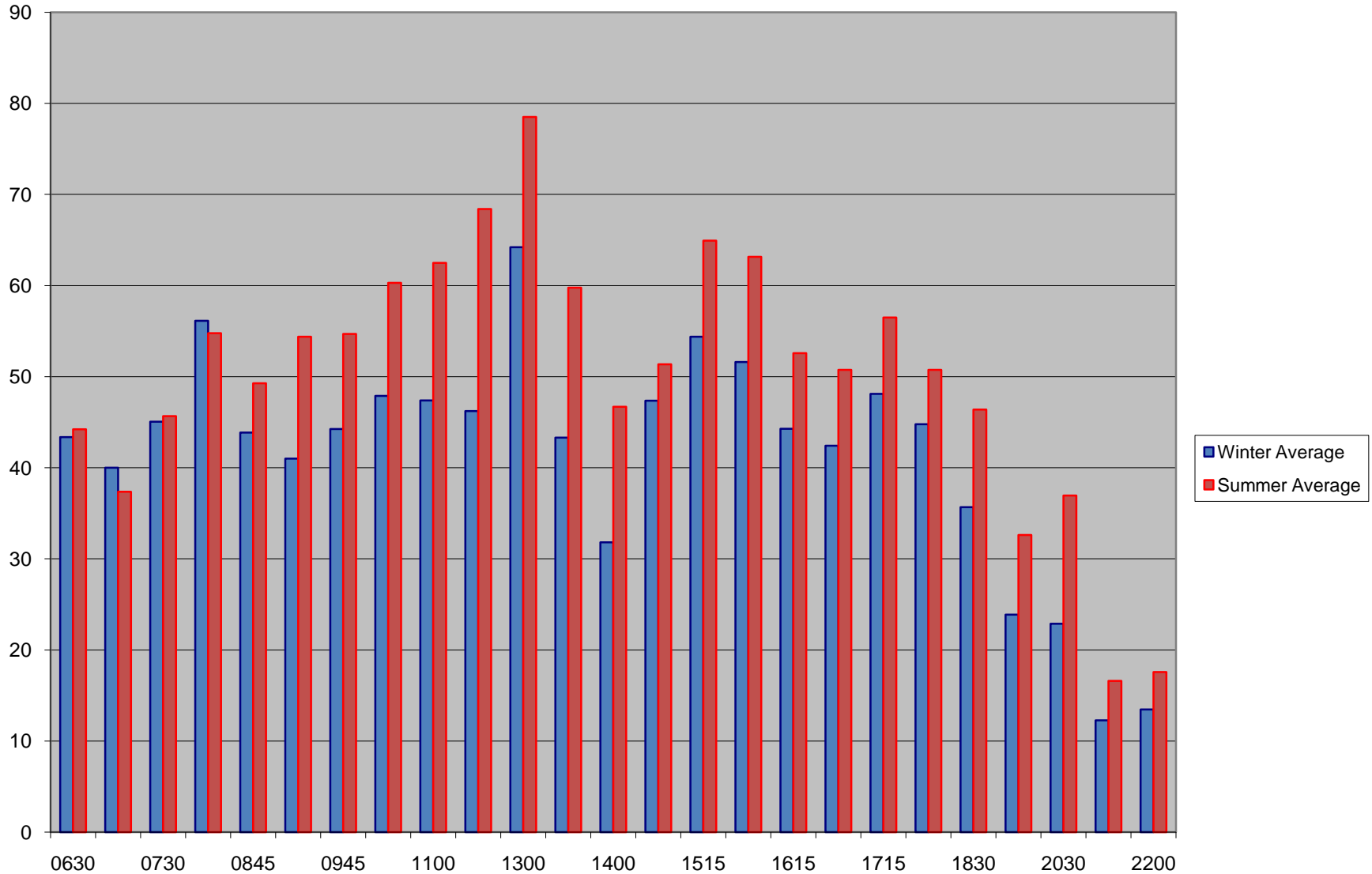


Sunday: Avg Total Passengers



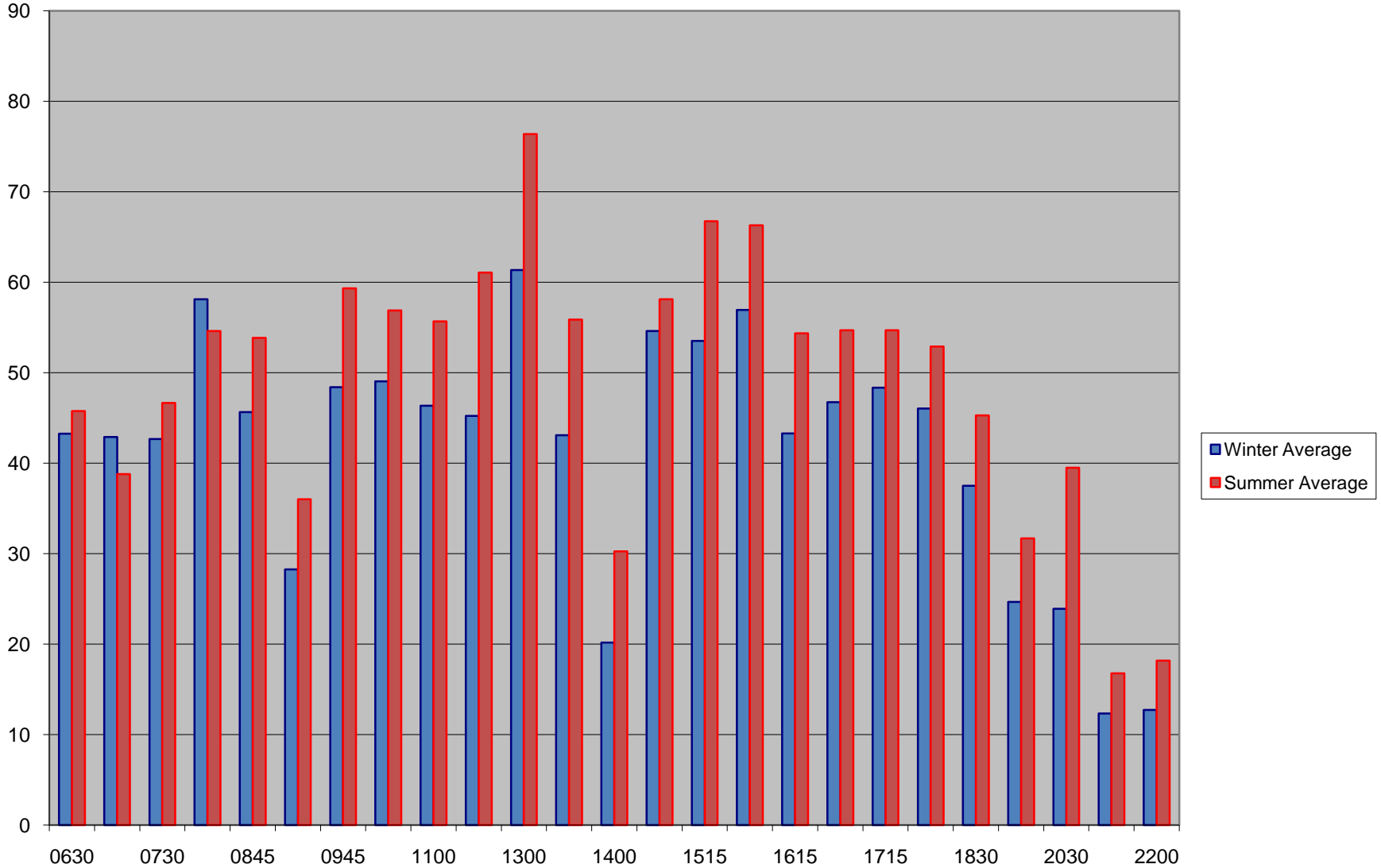


Monday: Avg Total Passengers



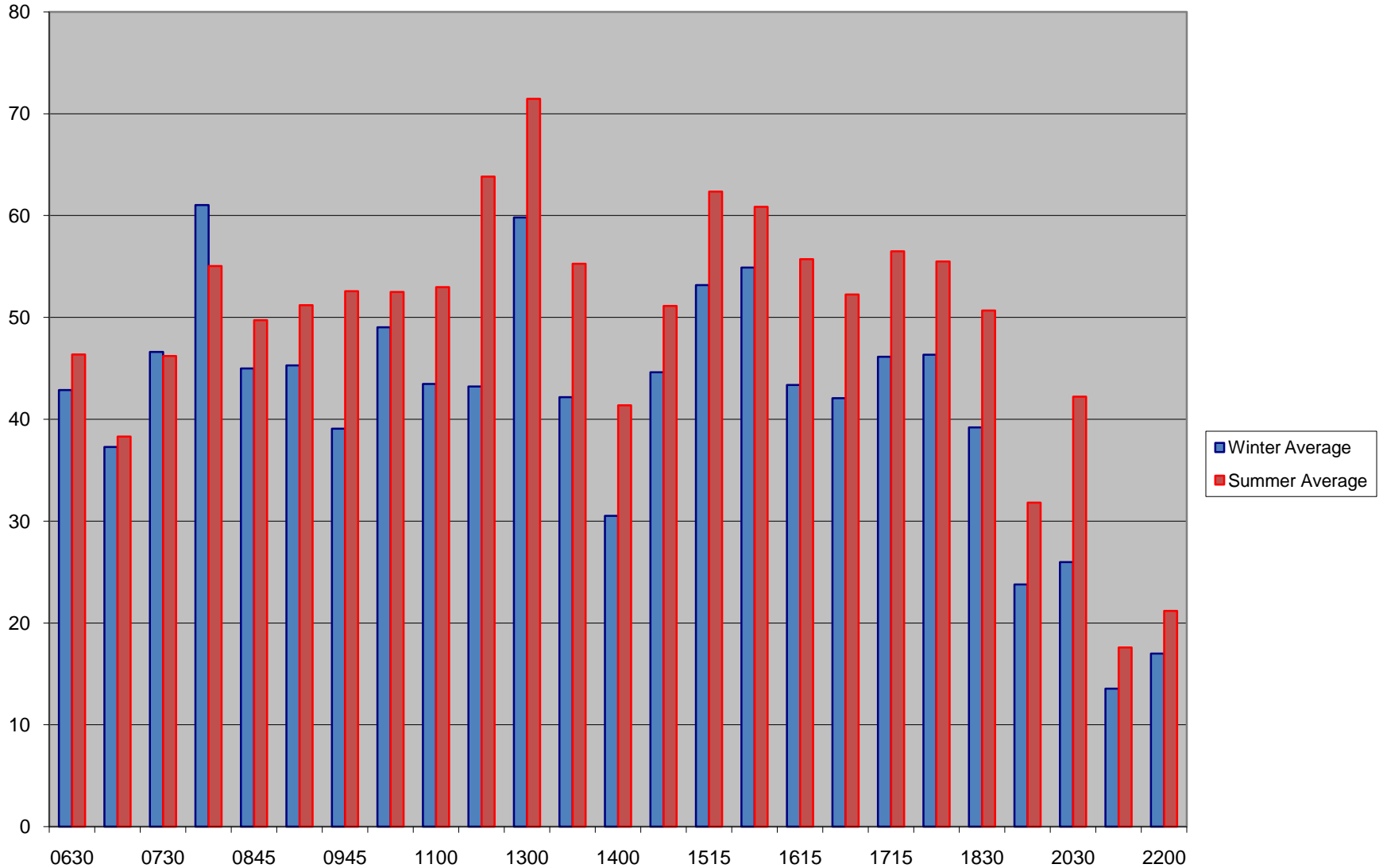


Tuesday: Avg Total Passengers



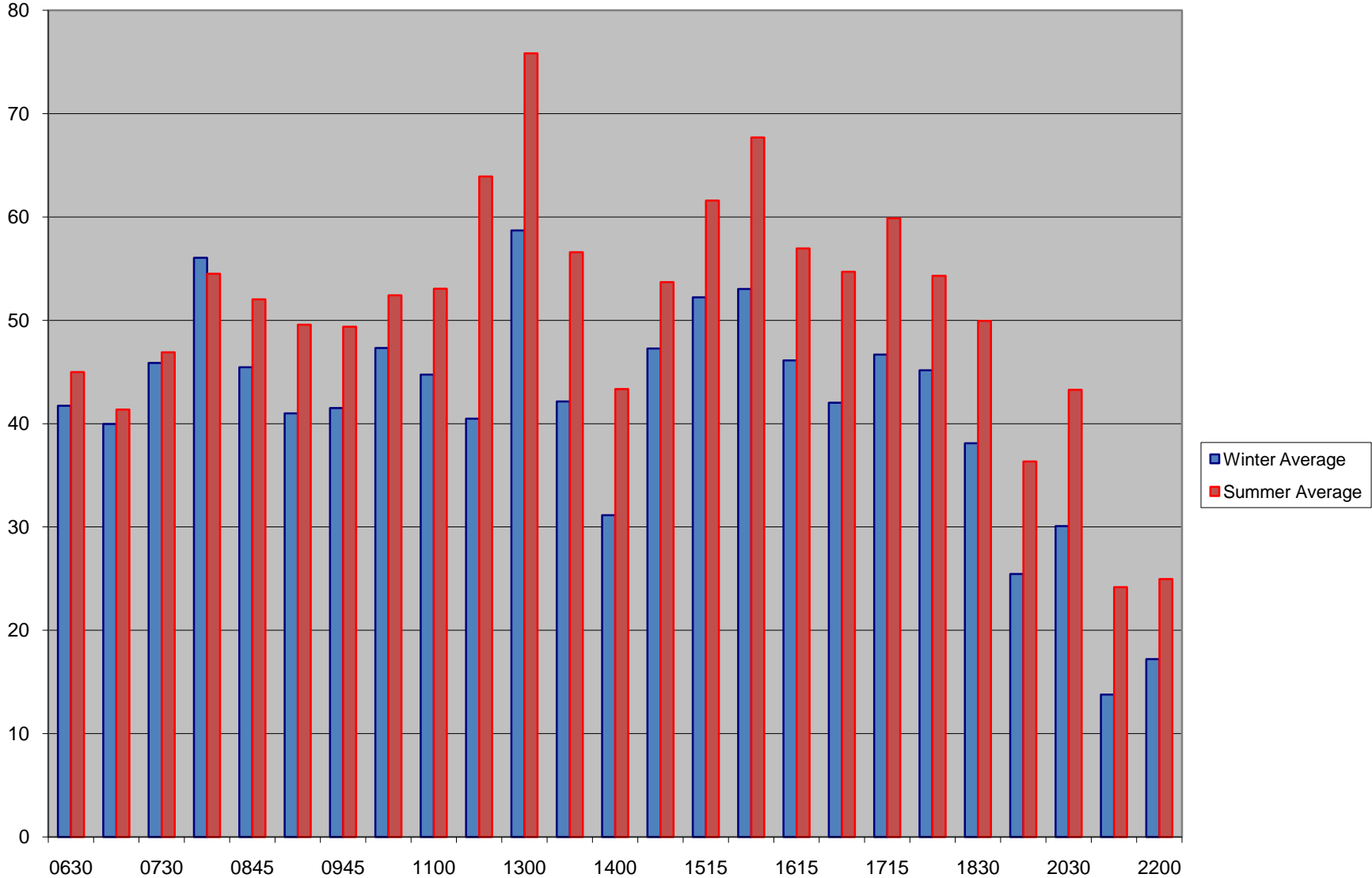


Wednesday: Avg Total Passengers



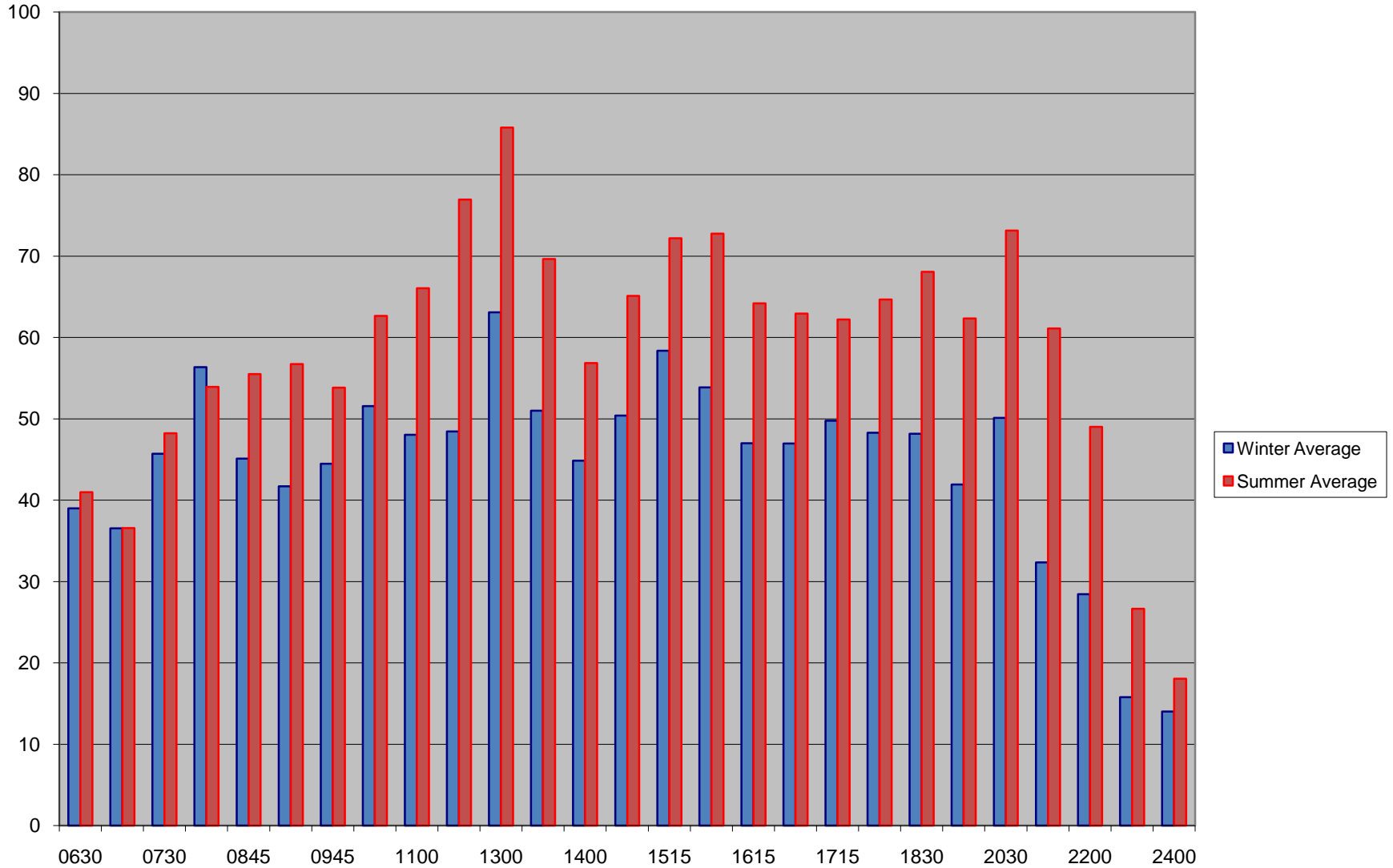


Thursday: Avg Total Passengers



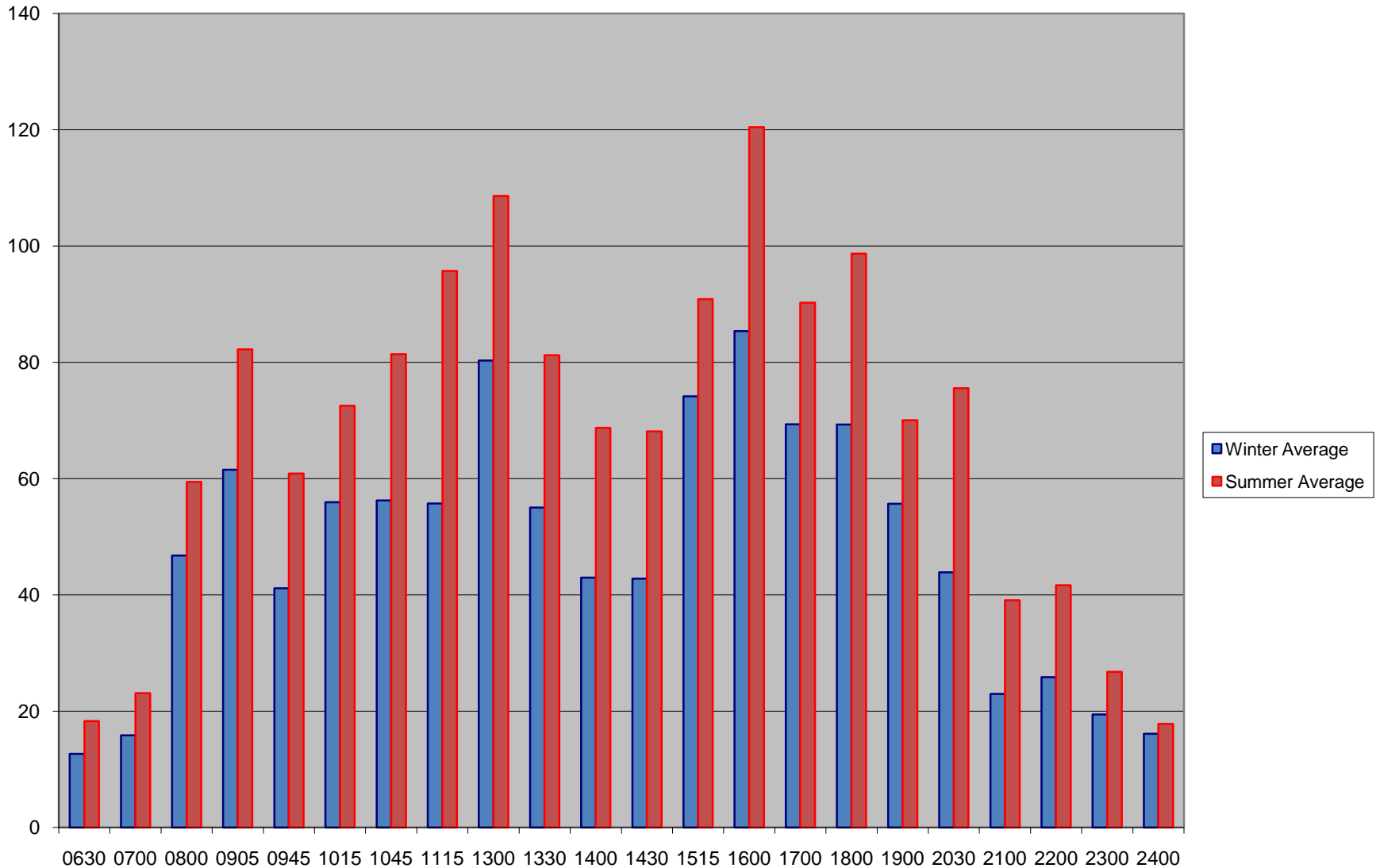


Friday: Avg Total Passengers





Saturday: Avg Total Passengers







Fare Proposal - 1/2

GUEMES ISLAND FERRY FARES

January 1, 2009

VEHICLE		Winter Fare	Summer Fare	
Cash Fares (20 ft & under including overhang)	Vehicle & Driver	\$8.00	\$10.00	
	Senior (65 yrs +) / Disabled	\$6.00	\$7.50	
	Motorcycle	\$4.00	\$6.00	
	Motorcycle with trailer	\$8.00	\$10.00	
	Motorcycle, Senior (65 yrs +) / Disabled	\$3.00	\$4.50	
	Motorcycle, Senior (65 yrs +) / Disabled with trailer	\$6.00	\$7.50	
Multi-Ride Vehicle	VALID FOR THE CALENDAR YEAR PURCHASED:			
	10 Trip Vehicle & Driver	\$72.00		
	10 Trip Vehicle & Driver - Senior / Disabled	\$54.00		
	10 Trip Motorcycle	\$36.00		
	10 Trip Motorcycle - Senior / Disabled	\$27.00		
NON-TRANSFERABLE	MONTHLY PASS VALID FOR 30 DAYS			
	23 Trip Monthly Vehicle & Driver	\$147.00		
	23 Trip Monthly Motorcycle	\$73.00		
PASSENGER	Cash Fares	Adult Passenger	\$2.00	\$3.00
		Senior (65 yrs +) / Disabled / Youth (6-17 yrs)	\$1.00	\$2.00
		Age 5 & under	FREE	
		Adult w/ Bike	\$3.00	\$4.00
		Youth / Senior w/ Bike	\$2.00	\$3.00
		Multi-Ride Passenger	VALID FOR THE CALENDAR YEAR PURCHASED:	
25 Trip Adult	\$45.00			
25 Trip Youth (6-17yrs) / Senior (65yrs +) / Disabled	\$23.00			
NON-TRANSFERABLE	MONTHLY PASS VALID FOR 30 DAYS			
23 Trip Monthly Passenger	\$37.00			



Fare Proposal - 2/2

OVERSIZE VEHICLE

Cash Fares	Vehicle over 20 ft to less than 25 ft	\$10.00	\$12.00
	Vehicle over 25 ft to less than 30 ft	\$15.00	\$17.00
	Vehicle over 30 ft to less than 35 ft	\$20.00	\$22.00
	Vehicle over 35 ft to less than 40 ft	\$26.00	\$28.00
	Vehicle over 40 ft to less than 45 ft	\$33.00	\$35.00
	Vehicle over 45 ft to less than 50 ft	\$41.00	\$43.00
	Vehicle over 50 ft to less than 55 ft	\$50.00	\$52.00
	Vehicle over 55 ft to less than 60 ft	\$59.00	\$61.00
	Vehicle over 60 ft to less than 65 ft	\$70.00	\$72.00
	Each 5 ft increment over 65 ft		\$4.00
	Overwidth charge (over 8 ft, 6 in)		Double Length Charge

MISCELLANEOUS

Cash Fares	Extended Run (1 run at end of day) plus fare	\$100.00
	Guemes Special (crew call out) plus fare	\$315.00
	Charter Rate (3 hr min) plus fare	\$1,000.00
	\$ per hour, each additional hour	\$325.00

NOTES:

Summer Fare Effective May 20th through September 10th
Winter Fare Effective September 11th through May 19th
10 Trip Vehicle and 25 Trip Passenger punch cards are valid only for the calendar year purchased.
23 Trip Monthly Punch Cards are non-transferable and cannot be used for more than one vehicle or one passenger. These tickets are valid for 30 days.
10 and 25 trip tickets are transferable and may be used for more than one vehicle or passenger on the same trip.
Individuals with permanent disabilities may be eligible for additional discounts on a case-by-case basis.