

**MAPa.**

## ENVIRONMENT DESIGNATION (WORKING DRAFT - IN PROGRESS)



# SKAGIT COUNTY SHORELINE MASTER PROGRAM

**DRAFT**

### MAP LEGEND

### Environment Designation

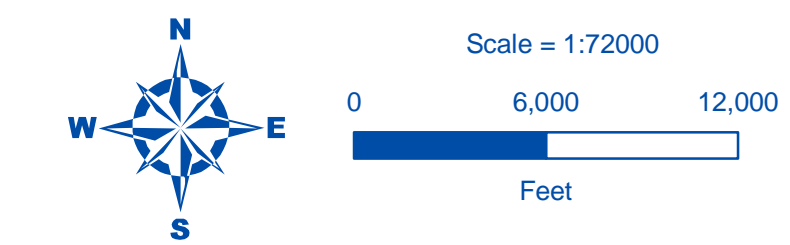
- High Intensity
- Natural
- Rural Conservancy
- Shoreline Residential
- Urban Conservancy
- Conservancy - Skagit Floodway

**Potential Adjustment\***

-  Potential Natural - Conservation
-  Potential Natural - Federal
-  Potential Natural - OSRSI
-  Potential Natural - Public
-  Potential non-Natural - Adjust high functioning reaches
-  City Boundaries
-  UGA Boundaries

\* Refer to Proposed Environment Designation Process document for details.

**Note:**  
All areas waterward of the Ordinary High Water Mark (OHWM) has an Aquatic designation.

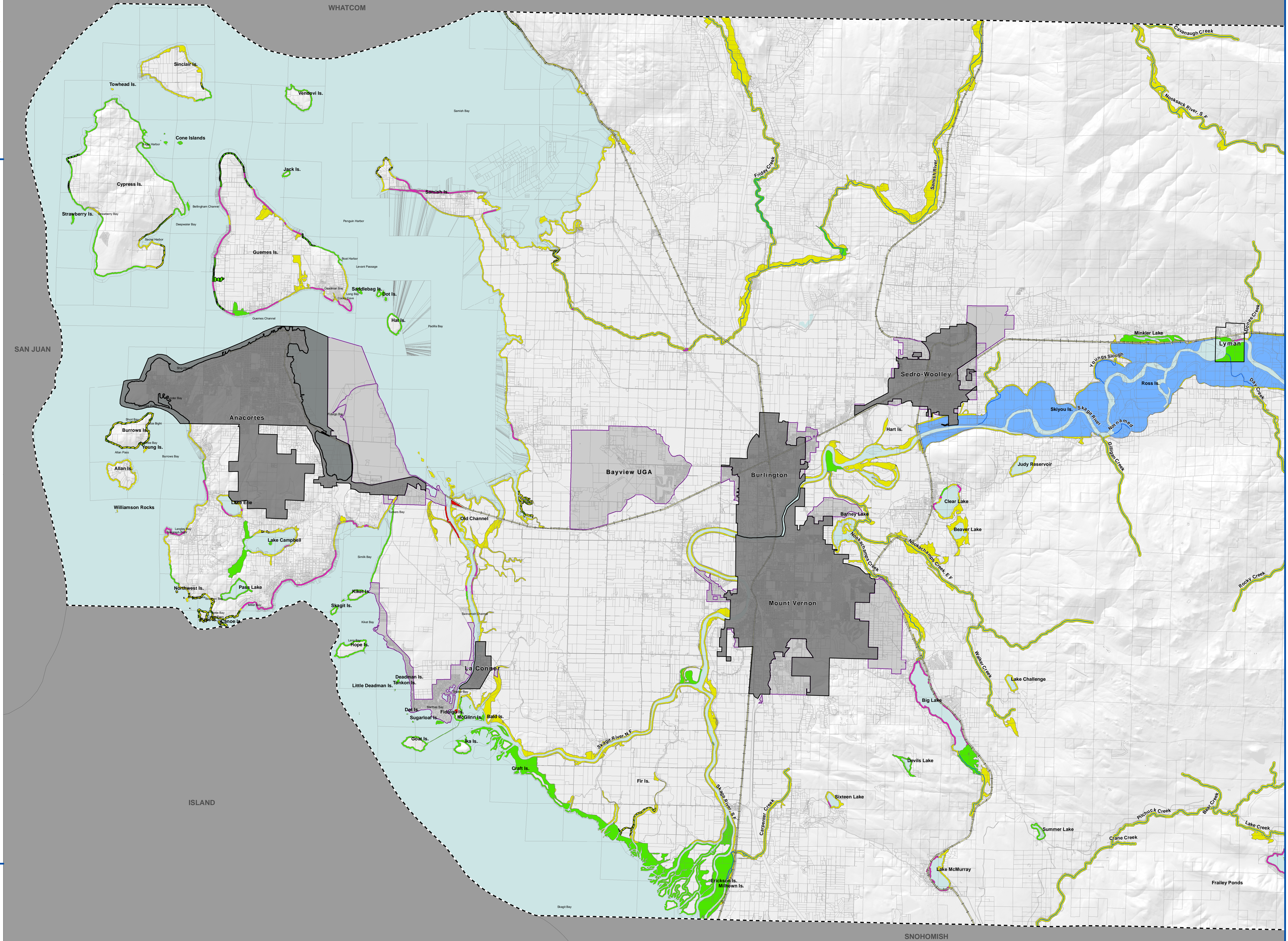


Date: 5/22/2012  
File Name: Fig02\_skagit\_ED\_v3\_05.22.12.mxd

*Data sources:  
Skagit County, USFS, NPS, Washington State Parks,  
WA Department of Natural Resources, The Watershed  
Company.*



*All features depicted on this map are approximate. They have not been formally delineated or surveyed and are intended for planning purposes only. Additional site-specific evaluation may be needed to confirm/ verify information shown on this map.*





MAPb.

ENVIRONMENT DESIGNATION (WORKING DRAFT - IN PROGRESS)

SKAGIT COUNTY

SHORELINE MASTER PROGRAM

SHORELINE MASTER PROGRAM

UPDATE

SKAGIT COUNTY

SHORELINE MASTER PROGRAM

DRAFT

MAP LEGEND

Environment Designation

High Intensity

Natural

Rural Conservancy

Shoreline Residential

Urban Conservancy

Conservancy - Skagit Floodway

Potential Adjustment\*

Potential Natural - Conservation

Potential Natural - Federal

Potential Natural - OSRSI

Potential Natural - Public

Potential non-Natural - Adjust high functioning reaches

City Boundaries

UGA Boundaries

\* Refer to Proposed Environment Designation Process document for details.

Note:

All areas waterward of the Ordinary High Water Mark (OHWM) has an Aquatic designation.

The map displays the Skagit River and its tributaries, including the Nooksack River, Grandy Creek, and the Skagit River itself. It shows various environment designations such as High Intensity, Natural, Rural Conservancy, and Urban Conservancy. Potential adjustments are also indicated, including Potential Natural - Conservation, Potential Natural - Federal, Potential Natural - OSRSI, Potential Natural - Public, and Potential non-Natural - Adjust high functioning reaches. The map includes labels for cities like Lyman, Hamilton, and Concrete, and for various creeks and lakes. A scale bar indicates a scale of 1:72000, and a north arrow is present. The map is overlaid with a grid and a scale bar.

N

E

S

W

Scale = 1:72000

0 6,000 12,000

Feet

Date: 5/22/2012

File Name: Fig02\_skagit\_ED\_v3\_05.22.12.mxd

Data sources:

Skagit County, USFS, NPS, Washington State Parks,

WA Department of Natural Resources, The Watershed Company.

THE

WATERSHED

COMPANY

All features depicted on this map are approximate. They have not been formally delineated or surveyed and are intended for planning purposes only. Additional site-specific evaluation may be needed to confirm/verify information shown on this map.



MAPc.

ENVIRONMENT DESIGNATION (WORKING DRAFT - IN PROGRESS)



SKAGIT COUNTY

SHORELINE MASTER PROGRAM

UPDATE

SKAGIT COUNTY

SHORELINE MASTER PROGRAM

DRAFT

MAP LEGEND

Environment Designation

■

High Intensity

■

Natural

■

Rural Conservancy

■

Shoreline Residential

■

Urban Conservancy

■

Conservancy - Skagit Floodway

Potential Adjustment\*

■

Potential Natural - Conservation

■

Potential Natural - Federal

■

Potential Natural - OSRSI

■

Potential Natural - Public

■

Potential non-Natural - Adjust high functioning reaches

■

City Boundaries

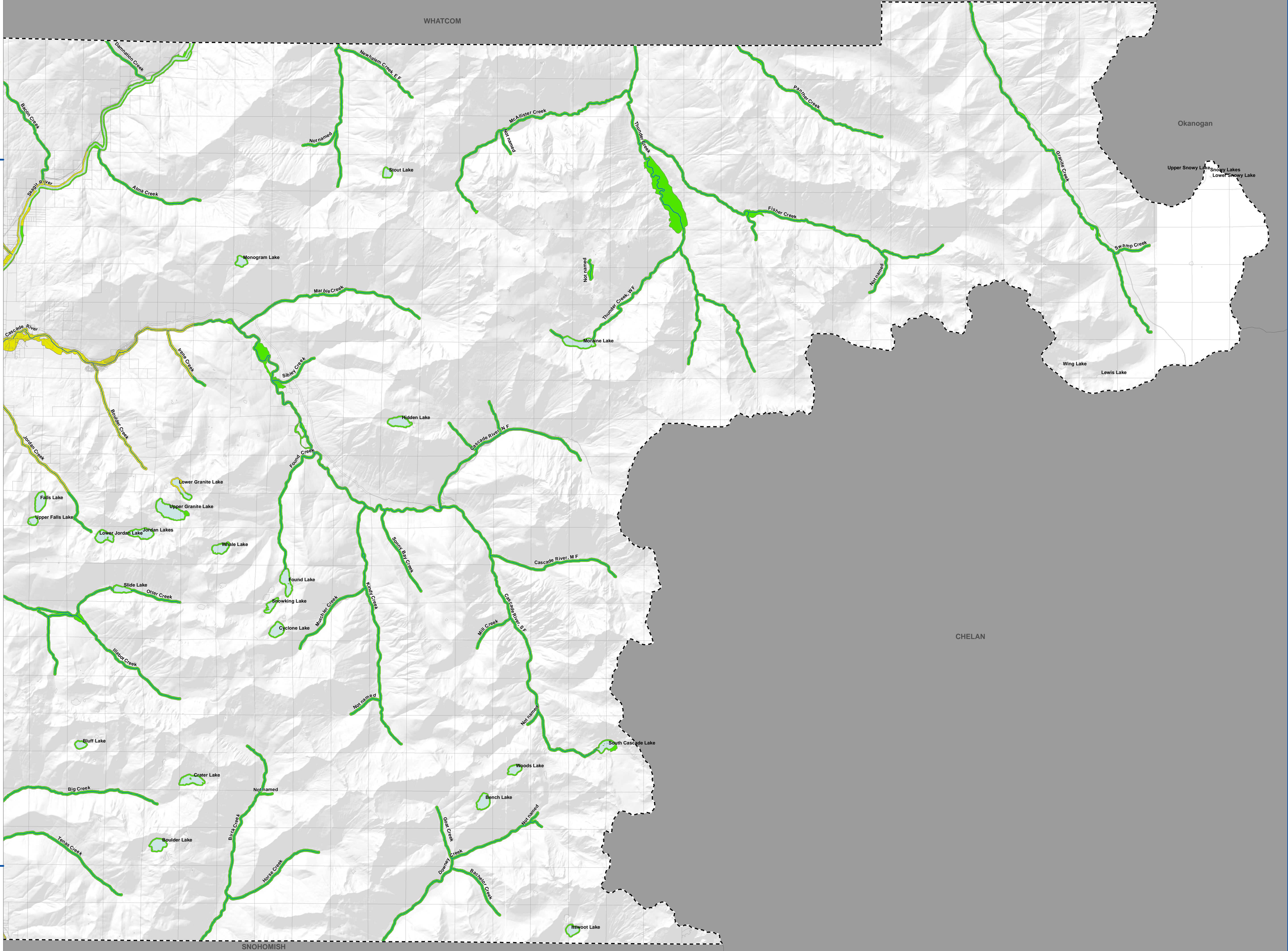
■

UGA Boundaries

\* Refer to Proposed Environment Designation Process document for details.

Note:

All areas waterward of the Ordinary High Water Mark (OHWM) has an Aquatic designation.





Scale = 1:72000

0 6,000 12,000

Feet

Date: 5/22/2012

File Name: Fig02\_skagit\_ED\_v3\_05.22.12.mxd

Data sources:  
Skagit County, USFS, NPS, Washington State Parks,  
WA Department of Natural Resources, The Watershed Company.



THE WATERSHED COMPANY

All features depicted on this map are approximate. They have not been formally delineated or surveyed and are intended for planning purposes only. Additional site-specific evaluation may be needed to confirm/ verify information shown on this map.