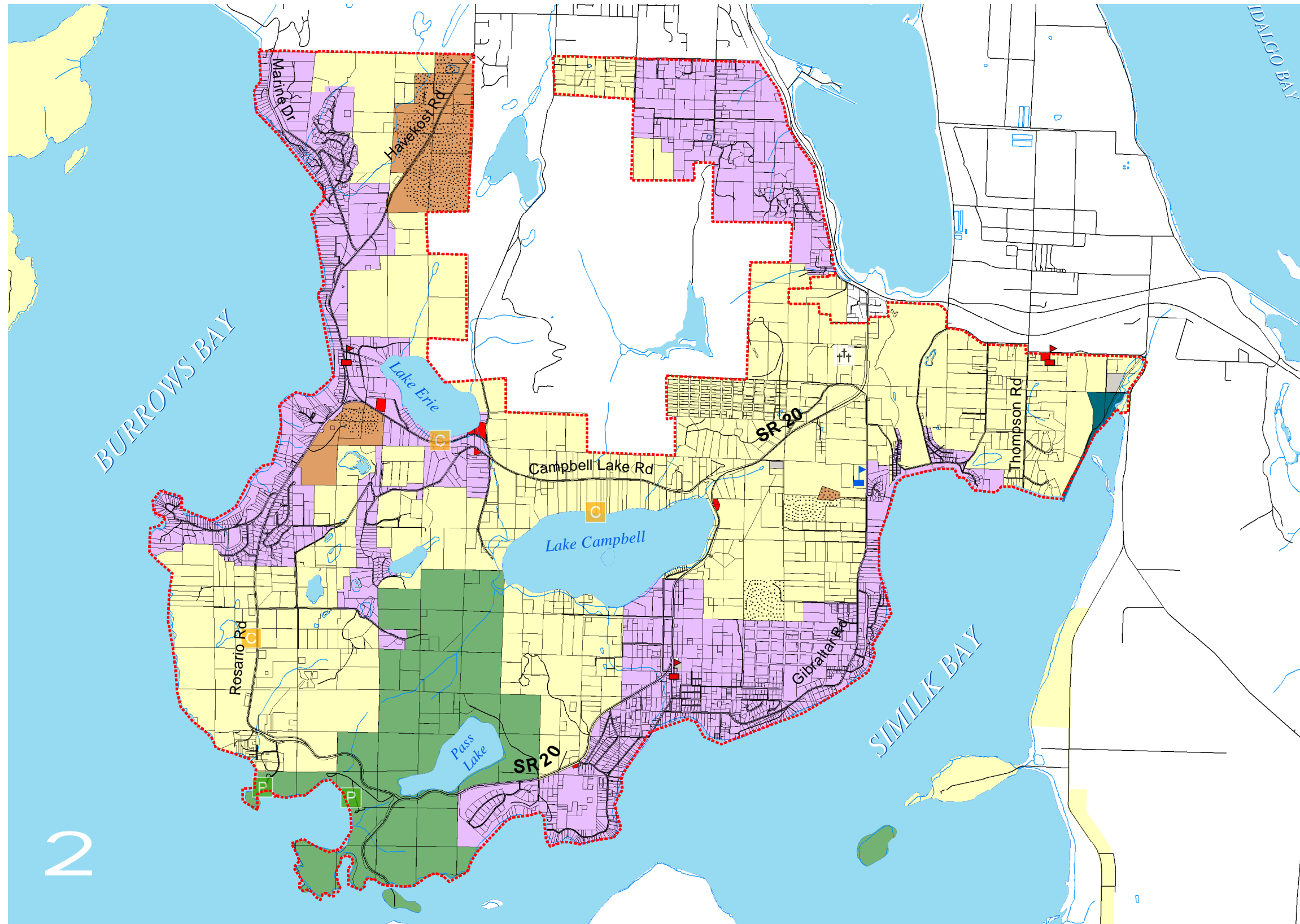


ZONING



Legend

- State Parks
 - County Parks
 - Cemetery
 - Fire Stations
 - Elementary School
 - Fidalgo Island Subarea
 - Fidalgo Parcels
 - Water Bodies
 - Rivers & Streams
 - Roads
 - Mineral Resource Overlay
- ### Zoning
- Rural Reserve (10 acres minimum)
 - Rural Intermediate (2.5 acre minimum)
 - Rural Resource
 - Cottage Industry/Small Scale Business
 - Rural Business/Rural Center
 - Rural Marine Industrial
 - State Park

0 1,000 2,000 4,000 Feet

All mapping information supplied by Skagit County, and may not reflect actual or current conditions. Information has not been verified.

MAP DATE: MAY 2005



**BUREAU
VERITAS**

Berryman & Henigar

720 Third Avenue, Suite 1200
Seattle, WA 98104
206/505-3400
Fax 206/505-3406

2

