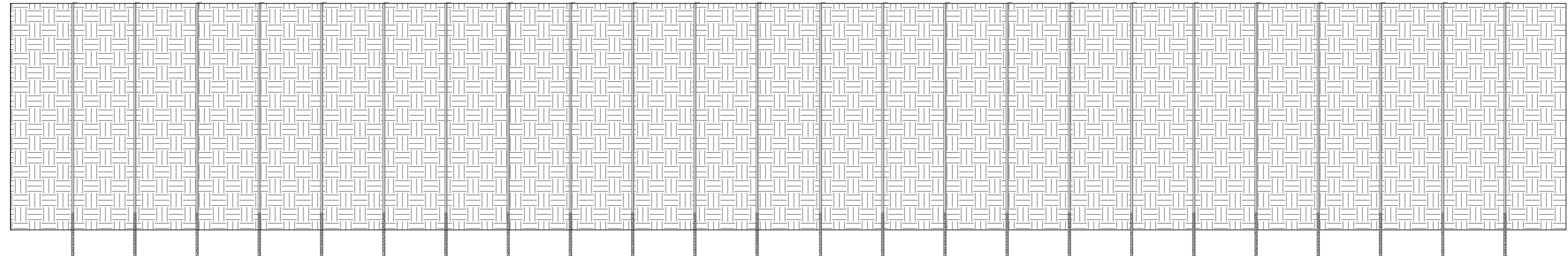


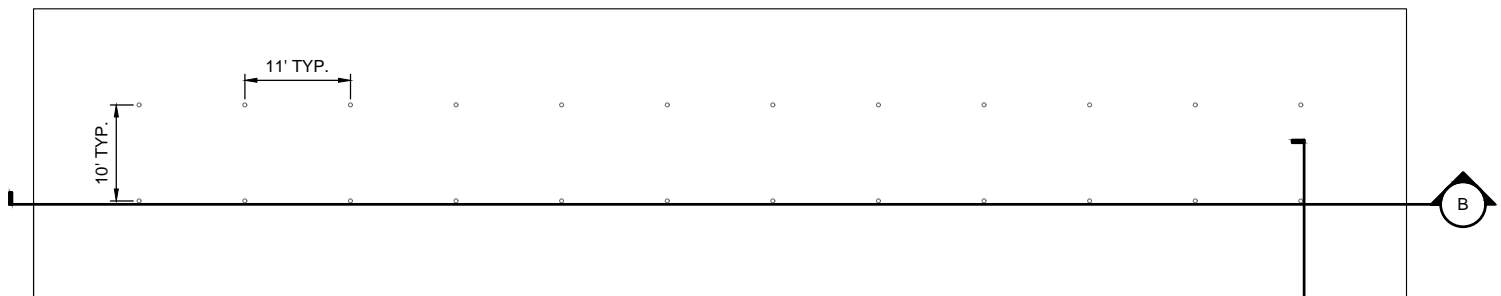
PRELIMINARY - NOT FOR CONSTRUCTION



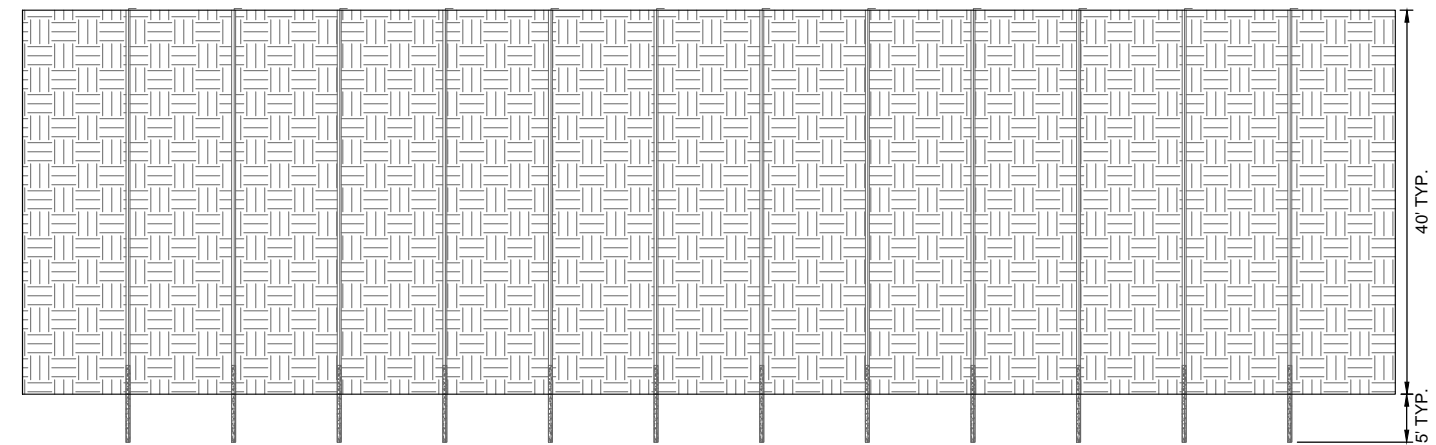
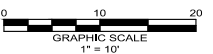
PLAN - SINGLE ROW (24 HOLES)
SCALE: 1" = 10'



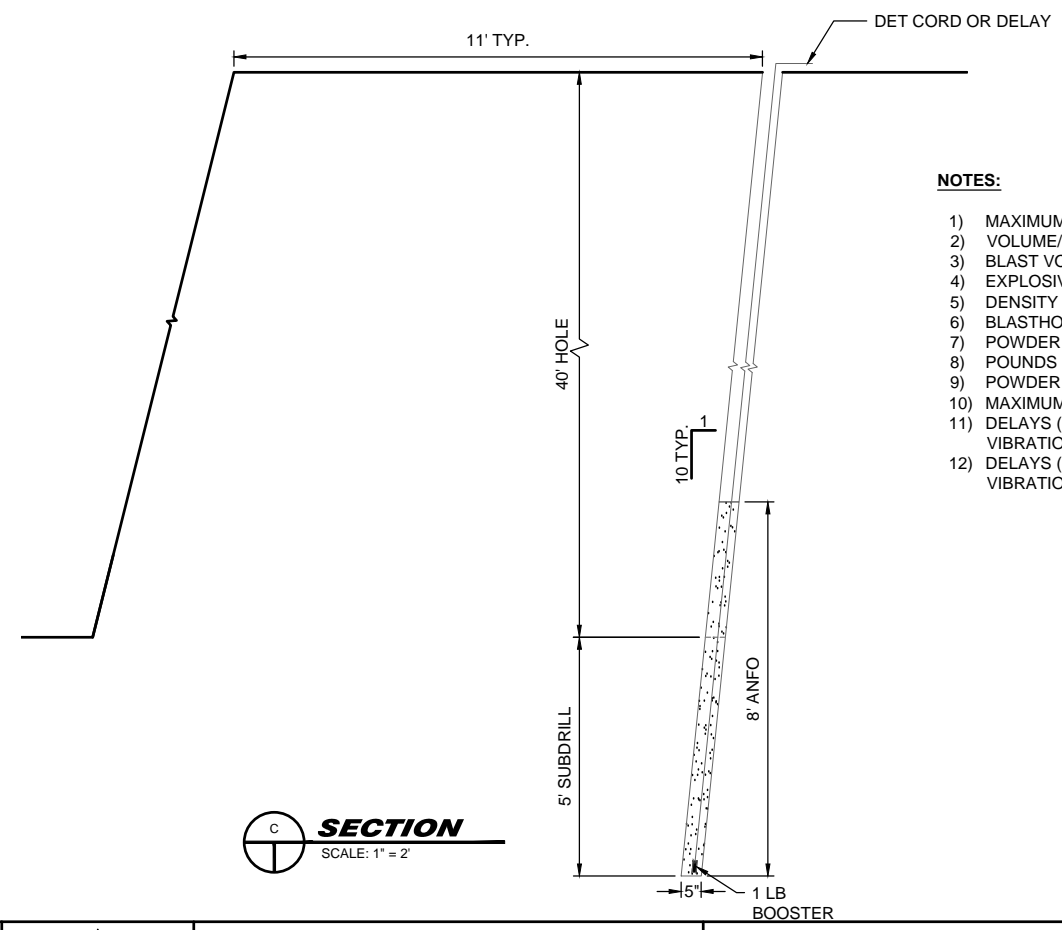
SECTION
SCALE: 1" = 10'



PLAN - TWO ROW (24 HOLES)
SCALE: 1" = 10'



SECTION
SCALE: 1" = 10'



SECTION
SCALE: 1" = 2'

NOTES:

- 1) MAXIMUM BLAST - 24 HOLES
- 2) VOLUME/HOLE - 163 CY
- 3) BLAST VOLUME - 3912 CY
- 4) EXPLOSIVES - ANFO
- 5) DENSITY - 0.82
- 6) BLASTHOLE DIAMETER. - 5 IN.
- 7) POWDER COLUMN PER FT - 7.0 LBS/LF
- 8) POUNDS PER HOLE - 65.0 LBS
- 9) POWDER FACTOR - 65 LB/63 = .40 LB/CY
- 10) MAXIMUM POWDER - 1565 LB/BLAST
- 11) DELAYS (SINGLE ROW) - AS REQUIRED FOR VIBRATION
- 12) DELAYS (DOUBLE ROW) - AS REQUIRED FOR VIBRATION

DRAWING FILE: C:\USERS\KCH\LOCAL DRIVE\KIEWIT\CORPORATE\PROJECTS\TYPICAL\ROCK SOURCES\MARBLEMOUNT QUARRY\BLAST - VIBRATION DOCUMENTS\TYPICAL BLAST PLAN.DWG
11/28/2018 11:10 AM

REV.	DATE	BY	DESCRIPTION	CHK'D
△	11/28/2018	NM	XXXXXXXXXX	CN



DESIGNED BY
DN/NM

DRAWN BY
NM

CHECKED BY
CN

PRINT IS ONE HALF INDICATED SCALE

SCALE
AS NOTED

IF SHEET IS LESS THAN 22"x34"
IT IS A REDUCED PRINT SCALE
REDUCED ACCORDINGLY

DATE (MM-DD-YY)
11/28/2018



PROJECT TITLE MARBLEMOUNT QUARRY	PROJECT LOCATION MARBLEMOUNT, WA	JOB NO. -
PROJECT TASK BLAST PLAN		TASK NO. <i>TYPICAL BLAST PLAN</i>
DRAWING SUBJECT TYPICAL BLAST PATTERNS		SHEET NO. 1 OF 1