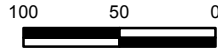


Immediate North Downtown Site

#1

ACRES: 1.8

Site boundary, parcels, and acreage are approximate.

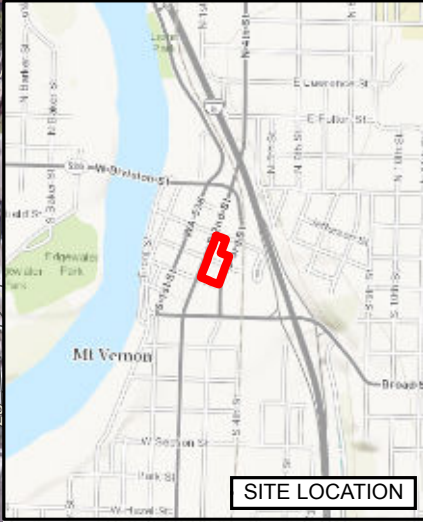
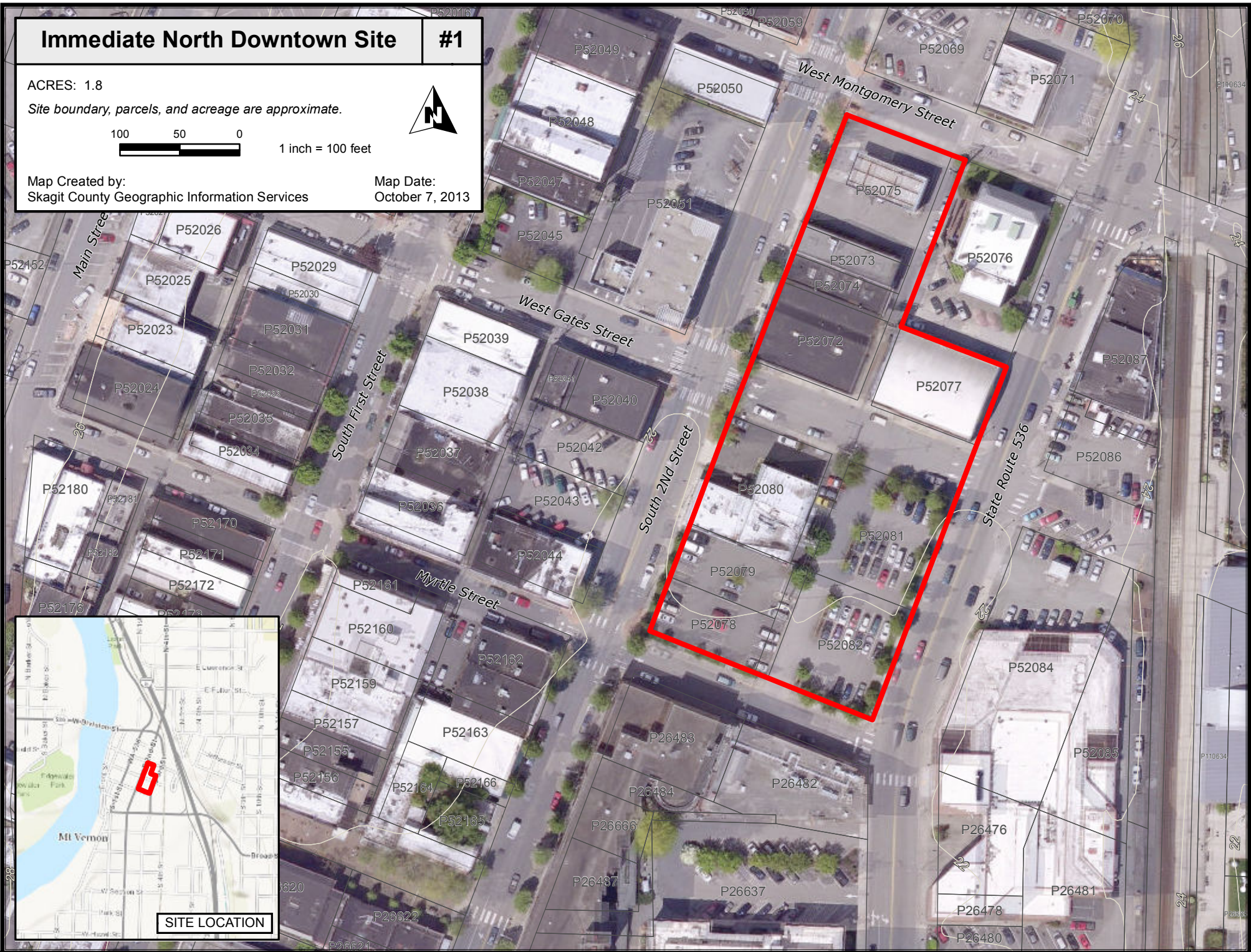


1 inch = 100 feet



Map Created by:
Skagit County Geographic Information Services

Map Date:
October 7, 2013



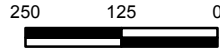
SITE LOCATION

Fairgrounds

#2

ACRES: 16.9

Site boundary, parcels, and acreage are approximate.

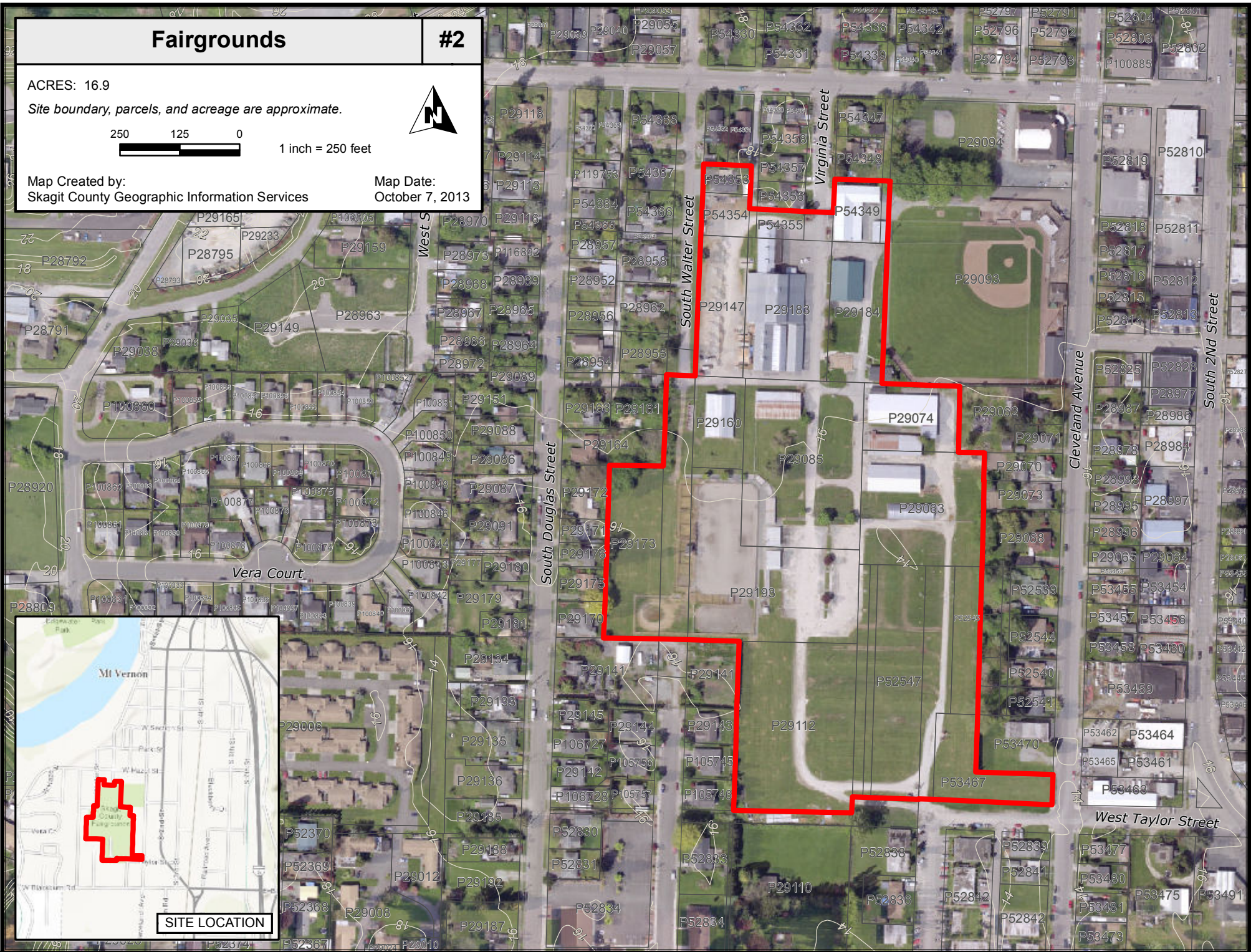


1 inch = 250 feet



Map Created by:
Skagit County Geographic Information Services

Map Date:
October 7, 2013

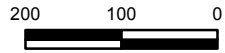


Wal-Mart

#3

ACRES: 12.4

Site boundary, parcels, and acreage are approximate.

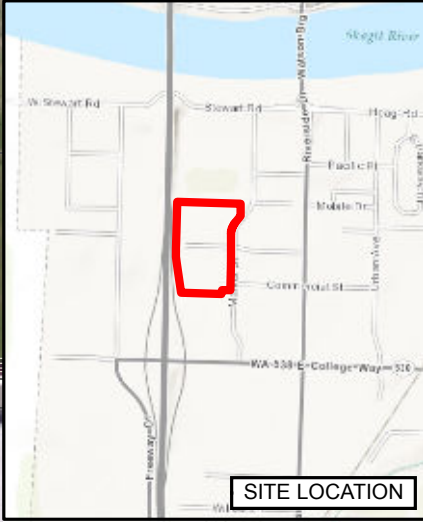
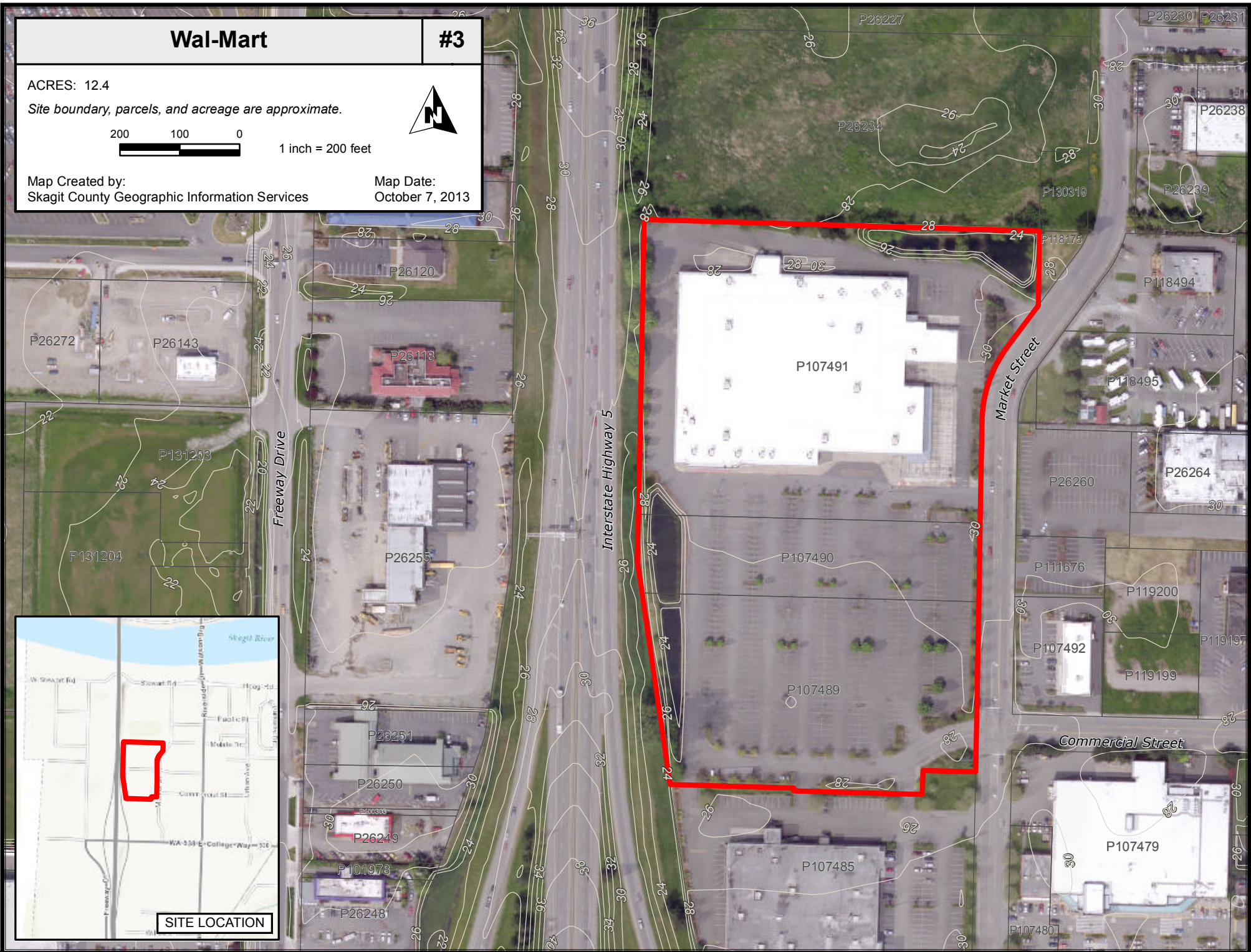


1 inch = 200 feet



Map Created by:
Skagit County Geographic Information Services

Map Date:
October 7, 2013



Meridian Quarry

#4

ACRES: 163.3

Site boundary, parcels, and acreage are approximate.

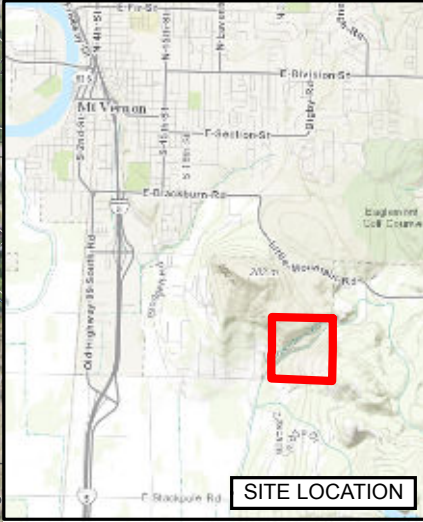
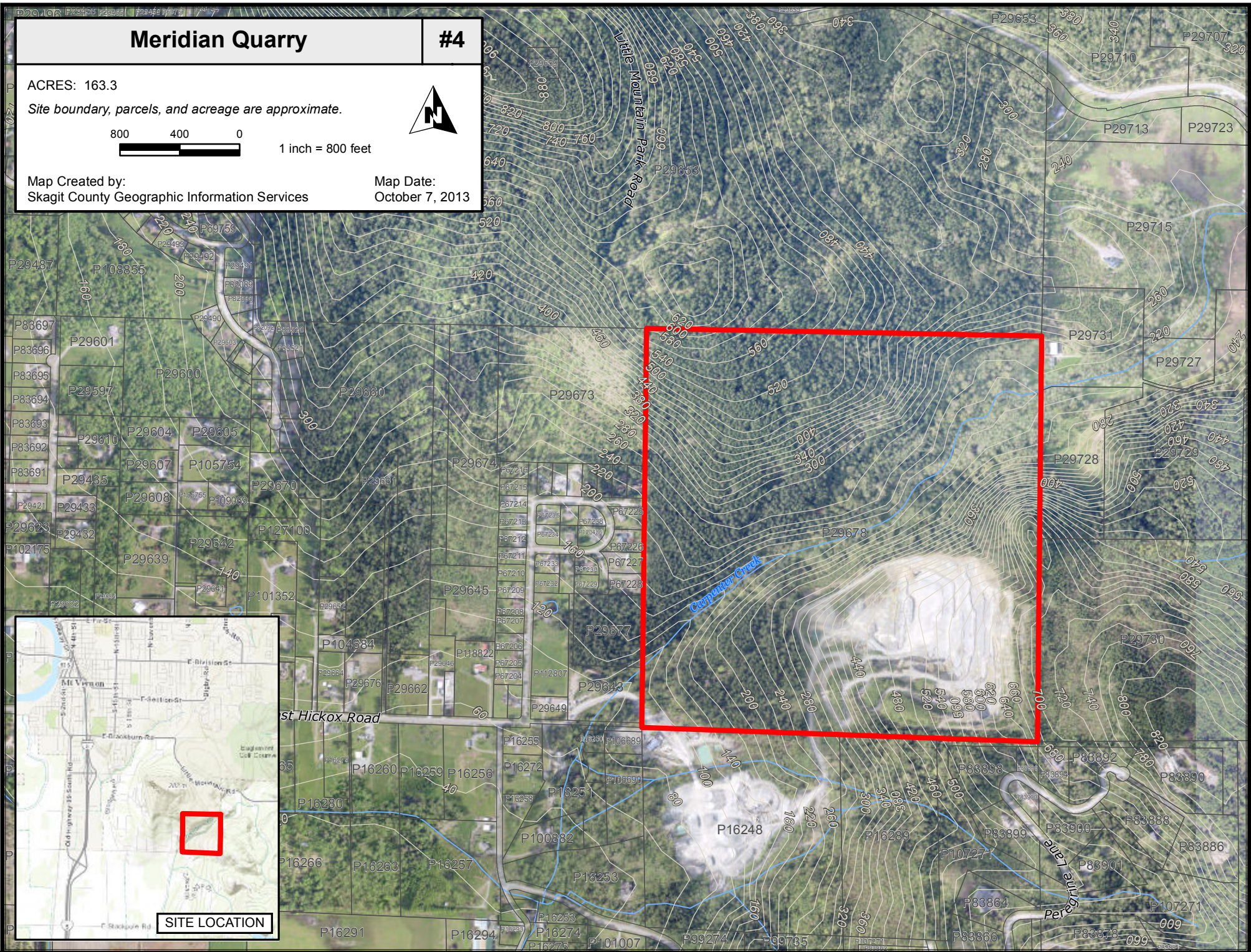


1 inch = 800 feet



Map Created by:
Skagit County Geographic Information Services

Map Date:
October 7, 2013

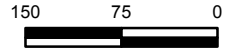


Fir Warehouse

#5

ACRES: 5.3

Site boundary, parcels, and acreage are approximate.

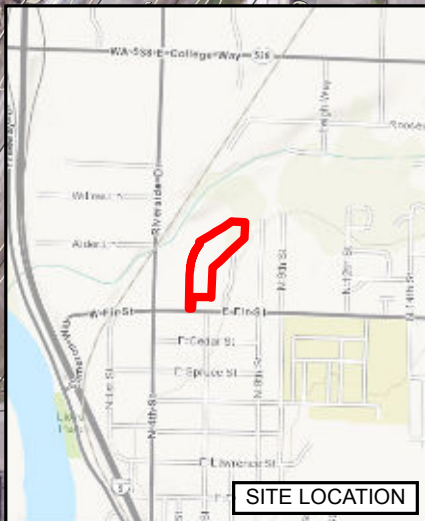
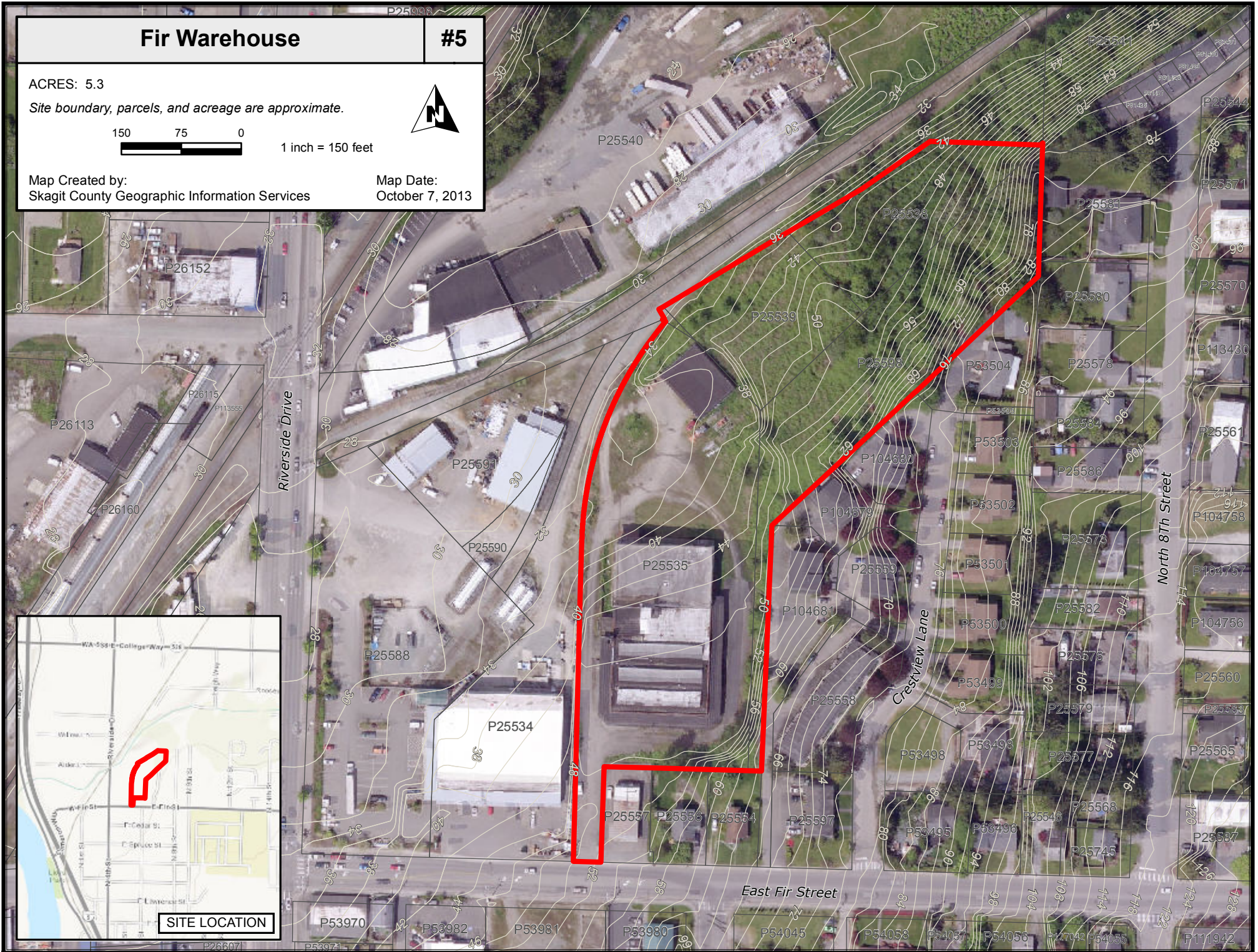


1 inch = 150 feet



Map Created by:
Skagit County Geographic Information Services

Map Date:
October 7, 2013

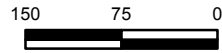


Lower Fourth Street

#6

ACRES: 4.8

Site boundary, parcels, and acreage are approximate.

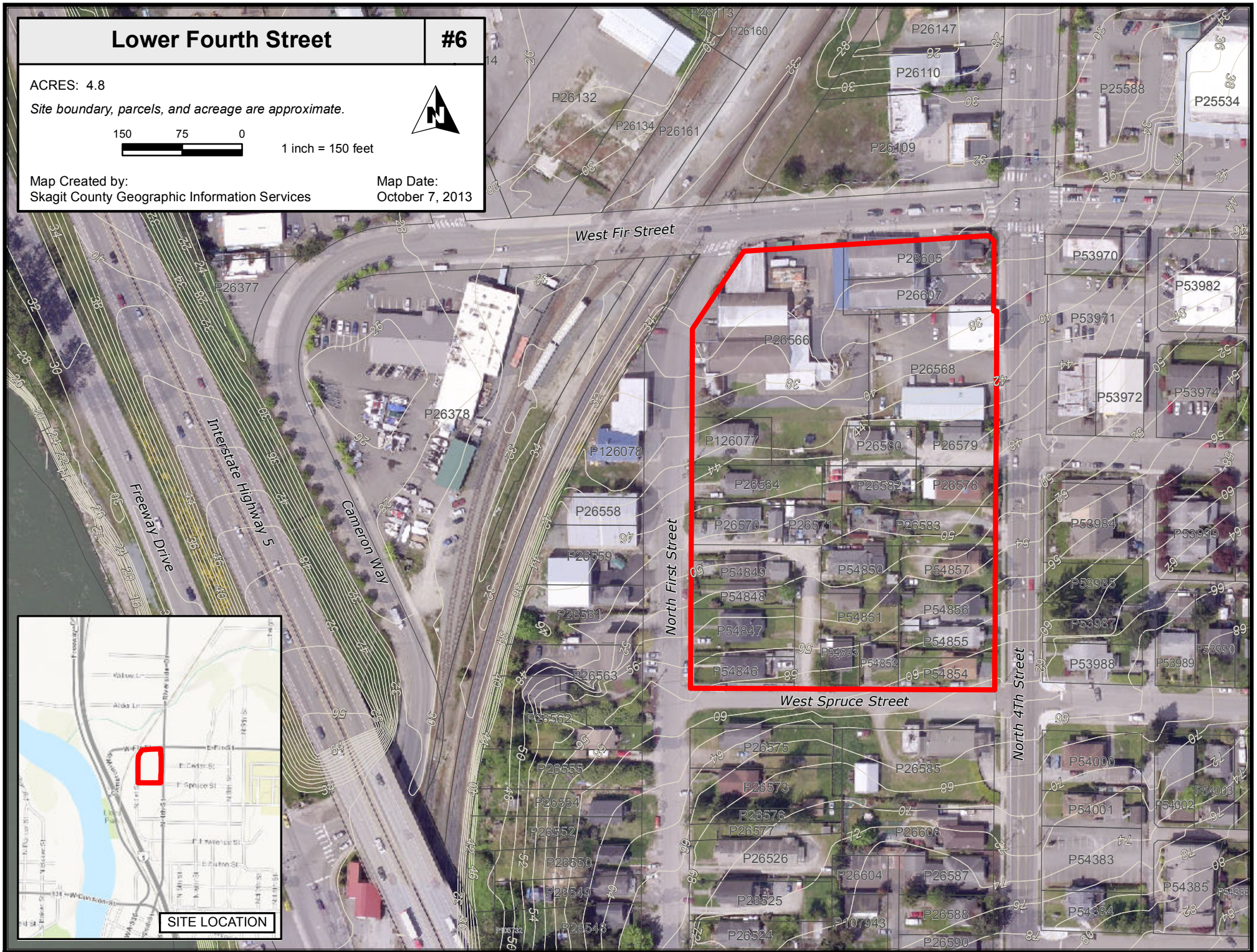
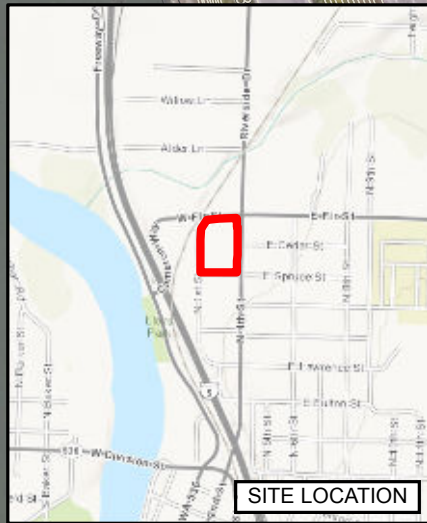


1 inch = 150 feet



Map Created by:
Skagit County Geographic Information Services

Map Date:
October 7, 2013

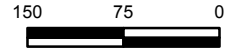


Far Downtown Northern Site

#7

ACRES: 7.4

Site boundary, parcels, and acreage are approximate.

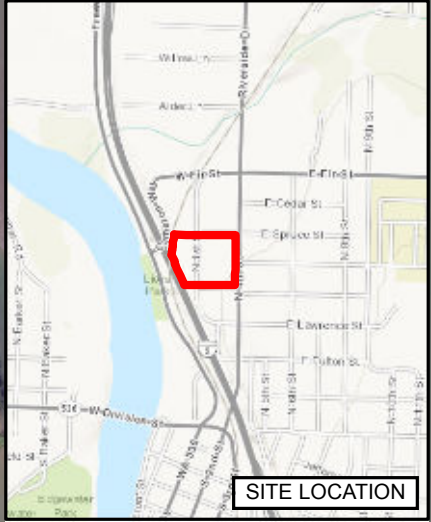


1 inch = 150 feet



Map Created by:
Skagit County Geographic Information Services

Map Date:
October 16, 2013



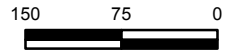
SITE LOCATION

South of Kincaid

#8

ACRES: 5.3

Site boundary, parcels, and acreage are approximate.

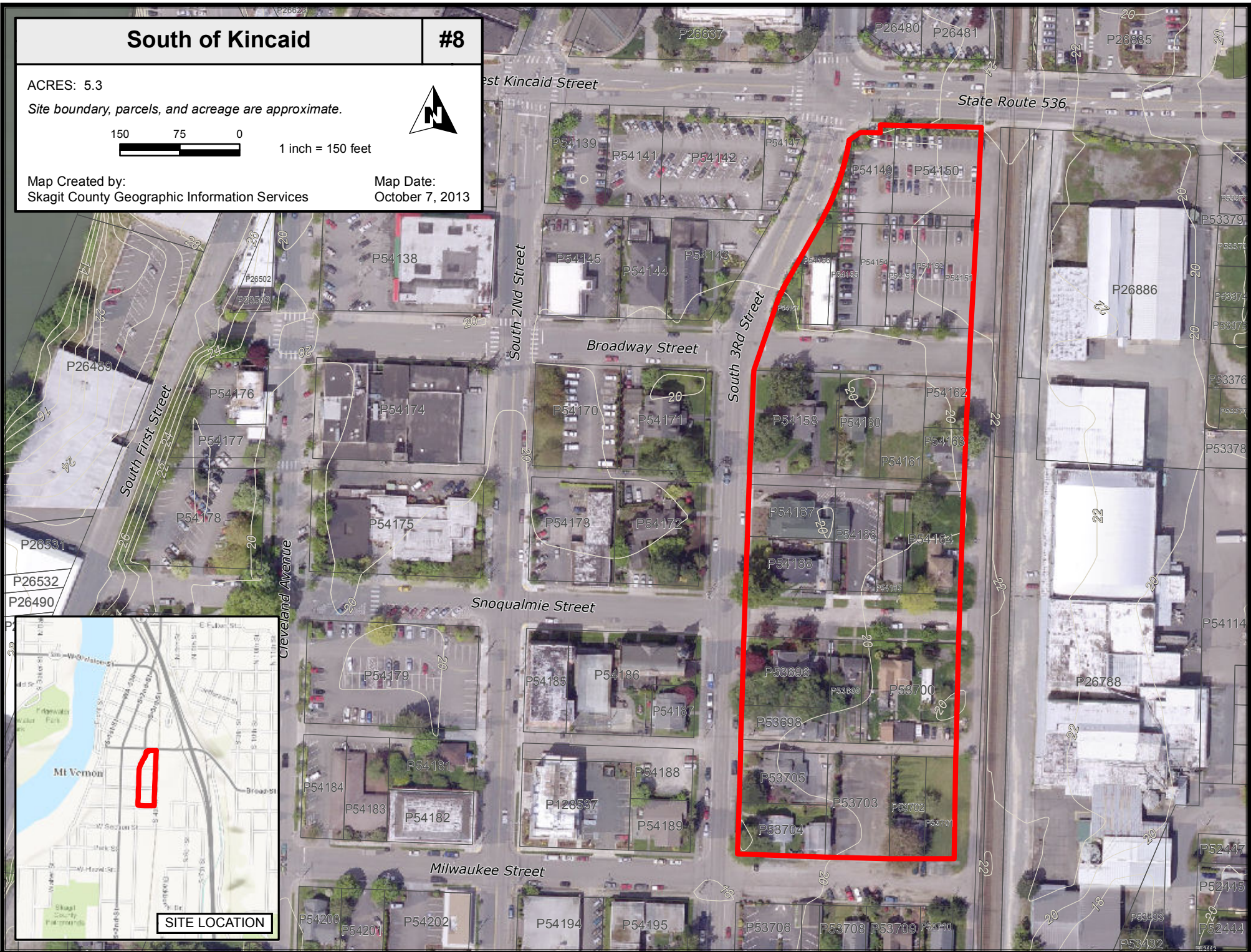


1 inch = 150 feet



Map Created by:
Skagit County Geographic Information Services

Map Date:
October 7, 2013



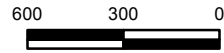
SITE LOCATION

Butler Pit

#9

ACRES: 128.6

Site boundary, parcels, and acreage are approximate.

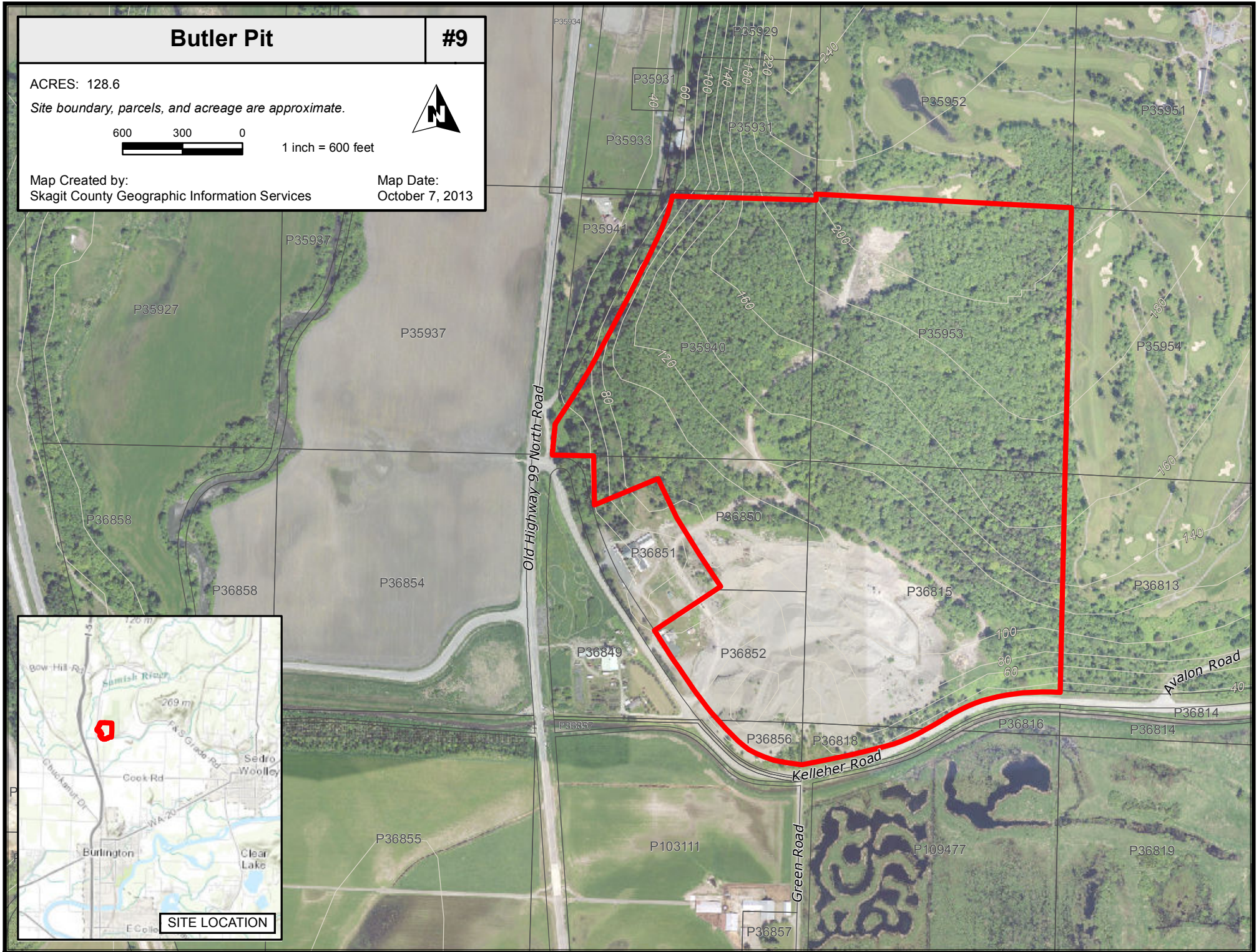
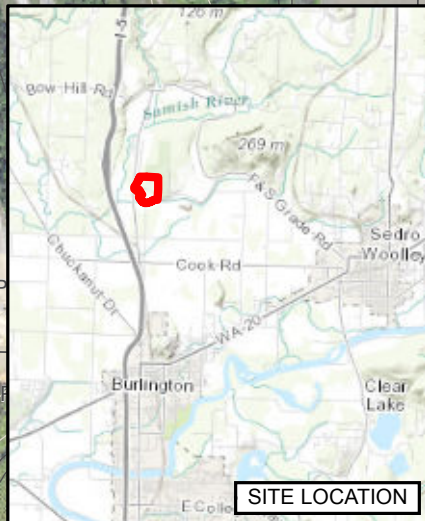


1 inch = 600 feet



Map Created by:
Skagit County Geographic Information Services

Map Date:
October 7, 2013

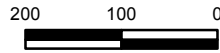


Seed Warehouse Site (larger site)

#10

ACRES: 17.0

Site boundary, parcels, and acreage are approximate.

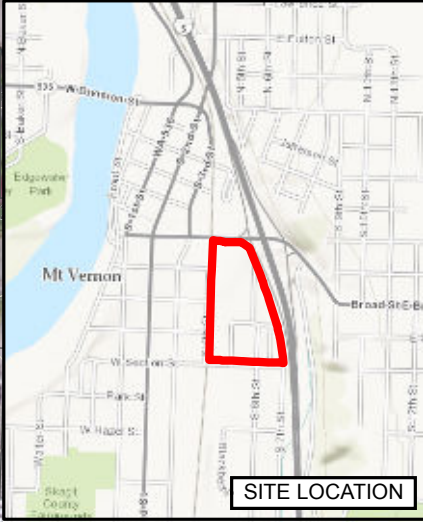


1 inch = 200 feet



Map Created by:
Skagit County Geographic Information Services

Map Date:
October 7, 2013

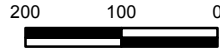


Seed Warehouse Site

#11 Final

ACRES: 7.8

Site boundary, parcels, and acreage are approximate.

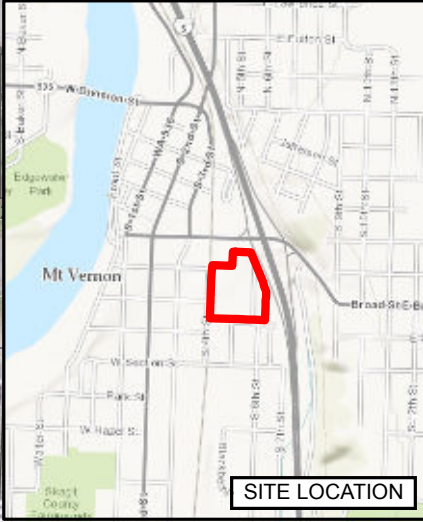
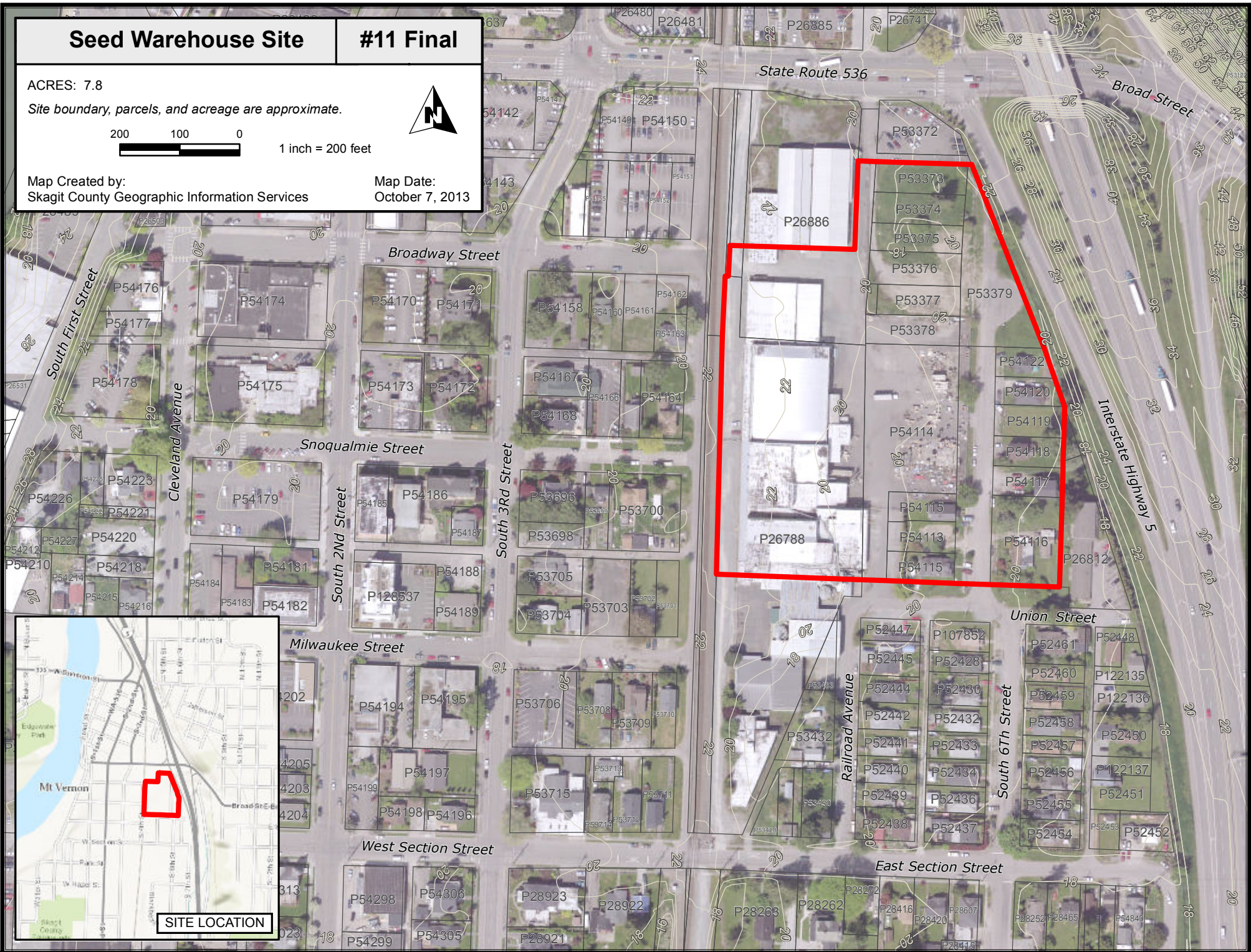


1 inch = 200 feet



Map Created by:
Skagit County Geographic Information Services

Map Date:
October 7, 2013

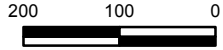


Truck City Site

#12

ACRES: 10.3

Site boundary, parcels, and acreage are approximate.



1 inch = 200 feet

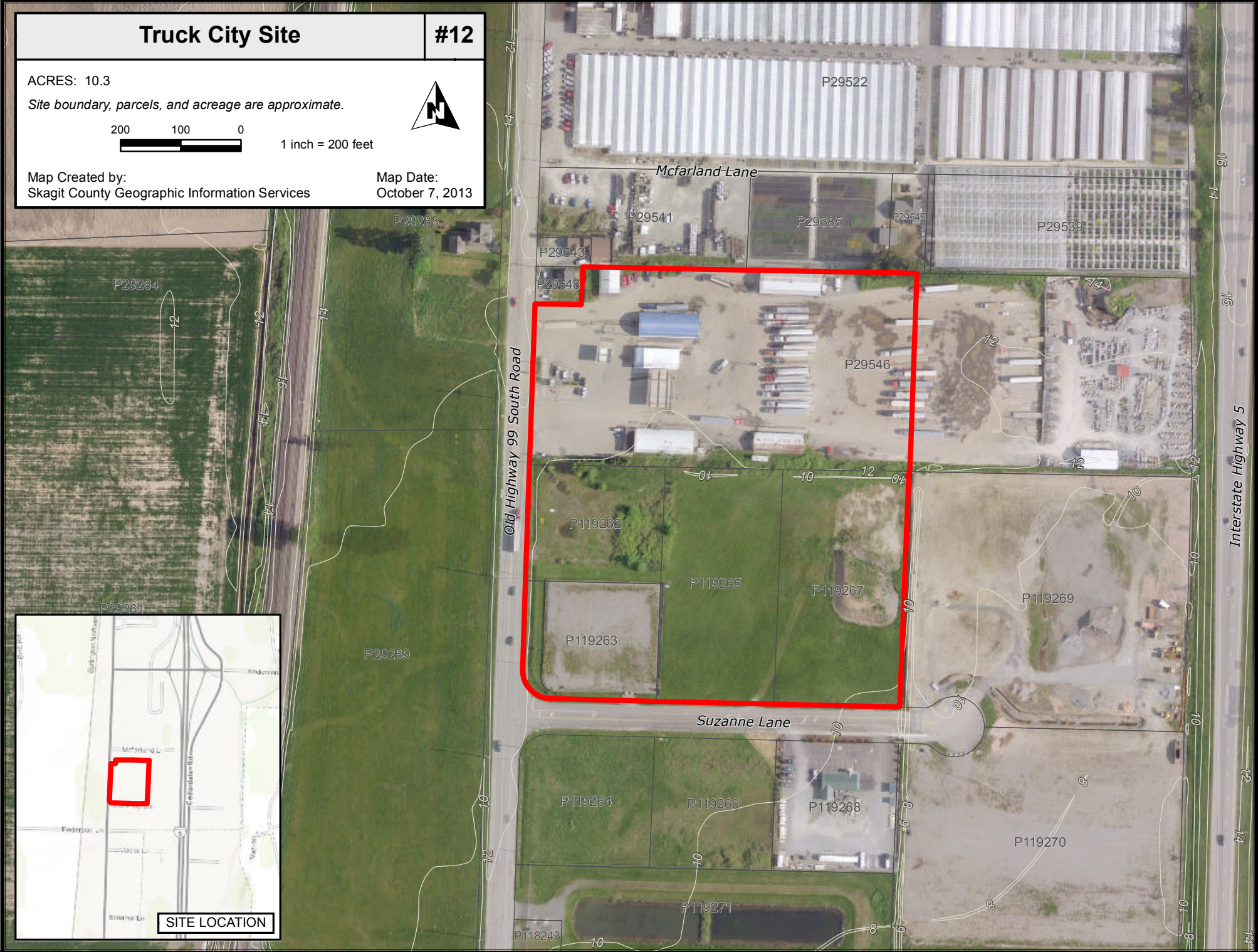


Map Created by:
Skagit County Geographic Information Services

Map Date:
October 7, 2013



SITE LOCATION

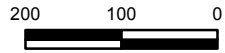


Gunn Road Site

#13

ACRES: 17.2

Site boundary, parcels, and acreage are approximate.

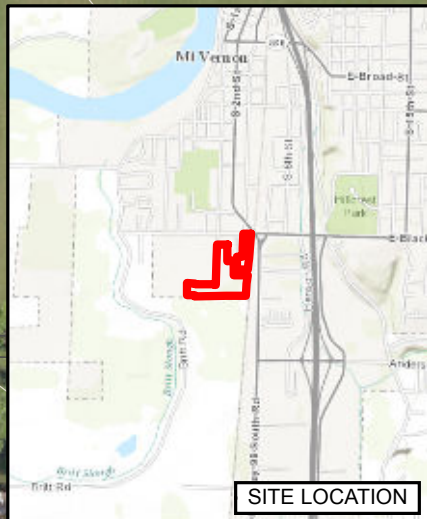


1 inch = 200 feet

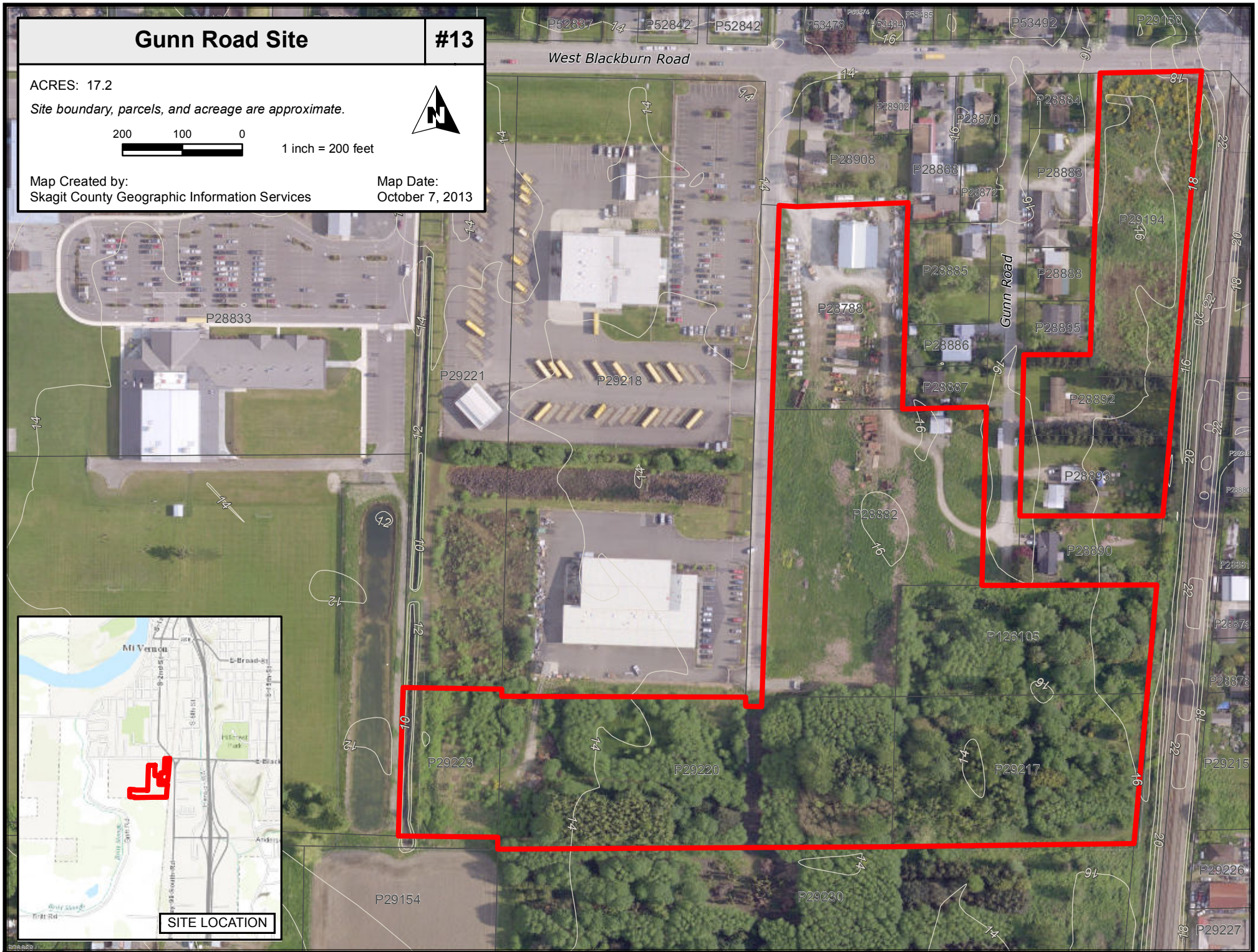


Map Created by:
Skagit County Geographic Information Services

Map Date:
October 7, 2013



SITE LOCATION

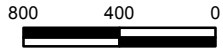


Port of Skagit Site

#14

ACRES: 164.7

Site boundary, parcels, and acreage are approximate.
Wetland information per SKAGIT WIN PHASE III
Wetland Management Plan, Port of Skagit County, 2003.



1 inch = 800 feet



Map Created by:
Skagit County Geographic Information Services

Map Date:
October 7, 2013

