

# GMA Update Map Deliberations

## Supplemental Maps and Illustrations

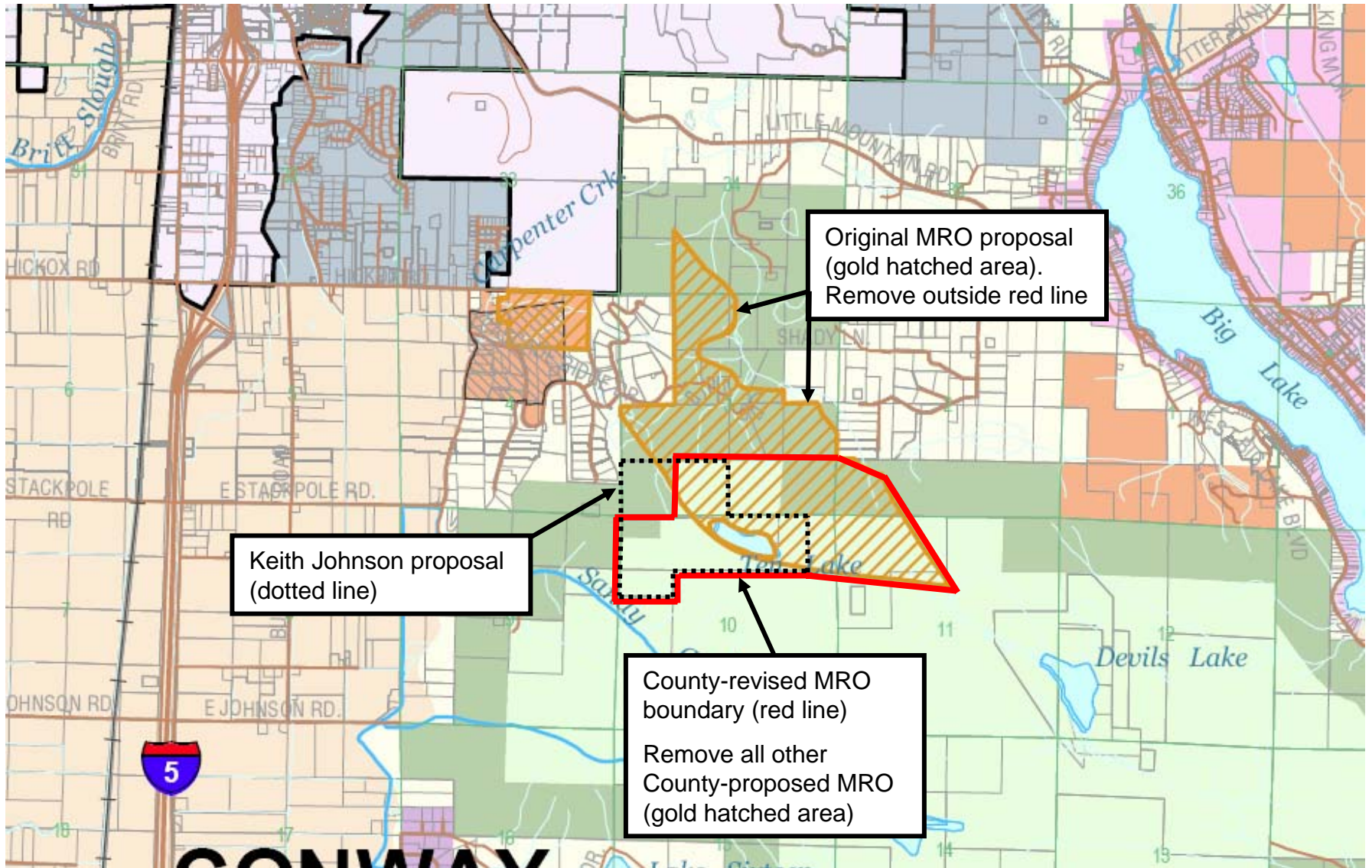
Attachment A

Memorandum to Skagit County Planning Commission,  
Mineral Resource Overlay Mapping, February 20, 2006

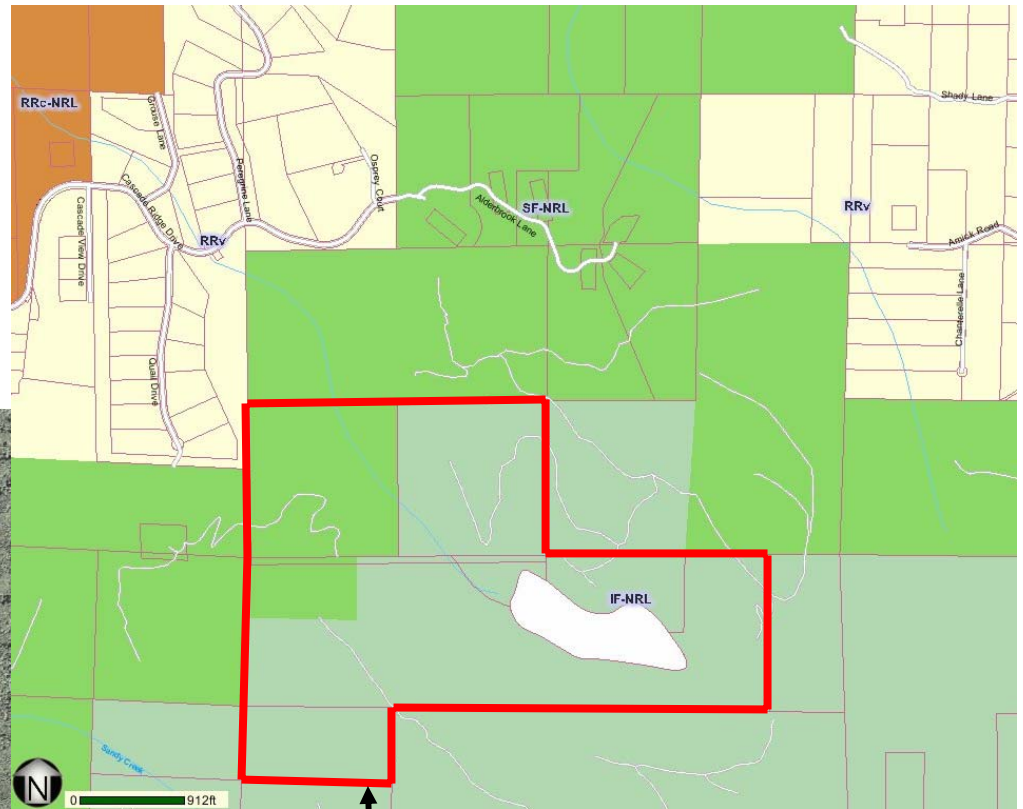
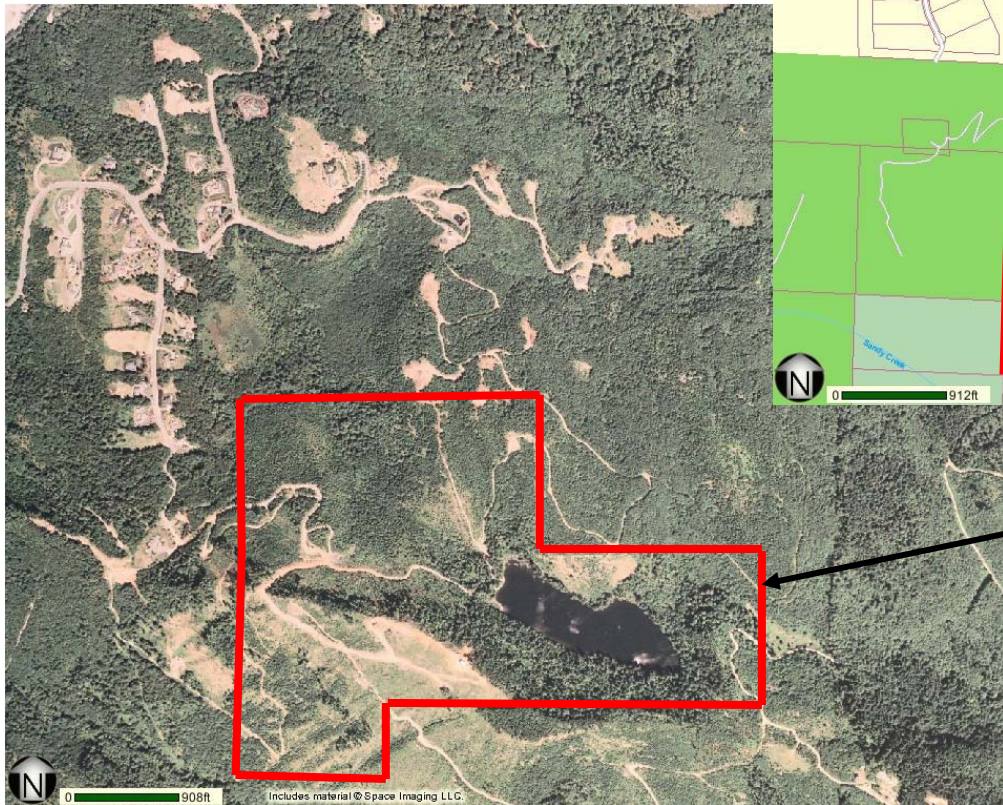
# CPA05-12 Unimin Corp.

For map of proposed MRO area, see Map CPA05-12,  
*Integrated SEPA GMA Report*, February 17, 2006

# CPA05-18 Keith Johnson



# CPA05-18 Keith Johnson

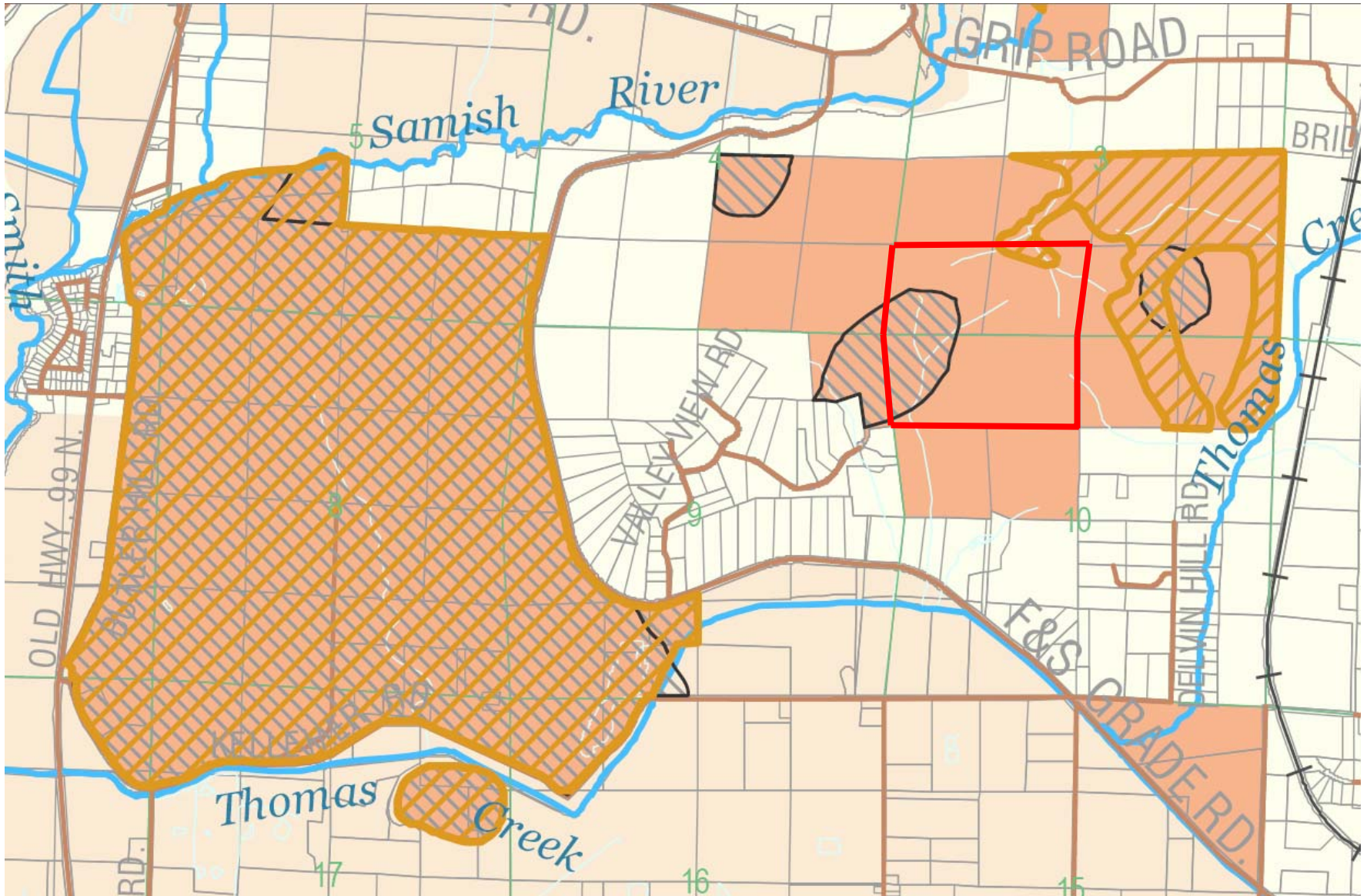


Keith Johnson proposal  
(see previous map for  
County-proposed  
alternative designation)

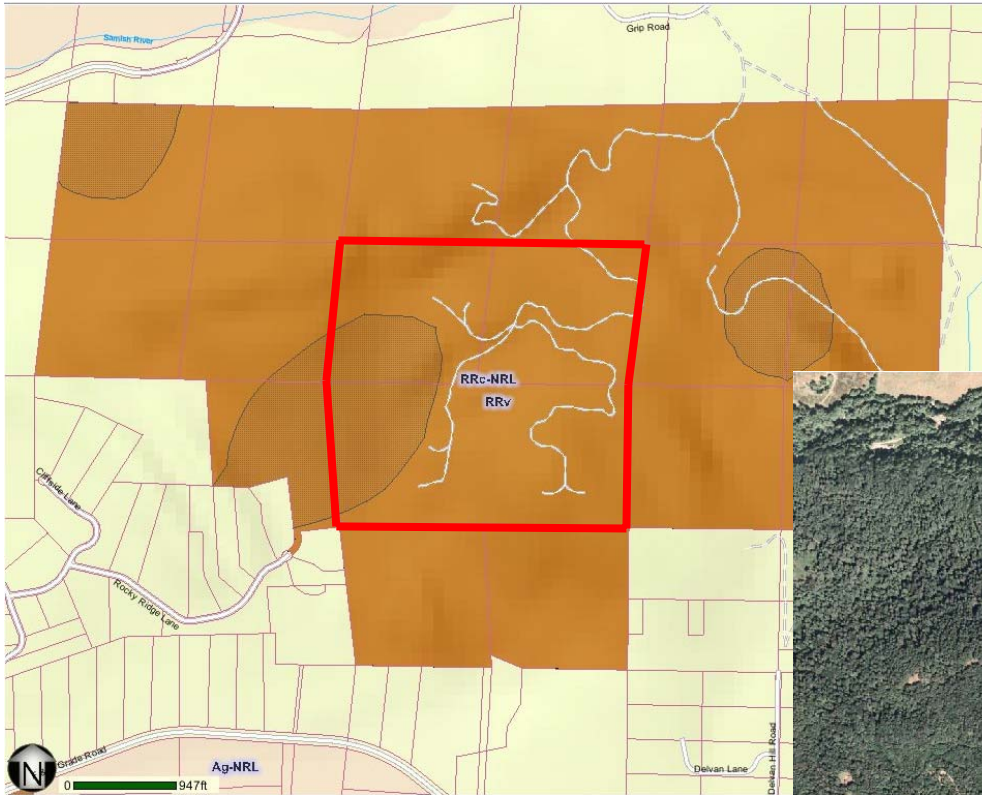
# CPA05-24 Nancie Elwick-Scott

Addressed as part of CPA05-31

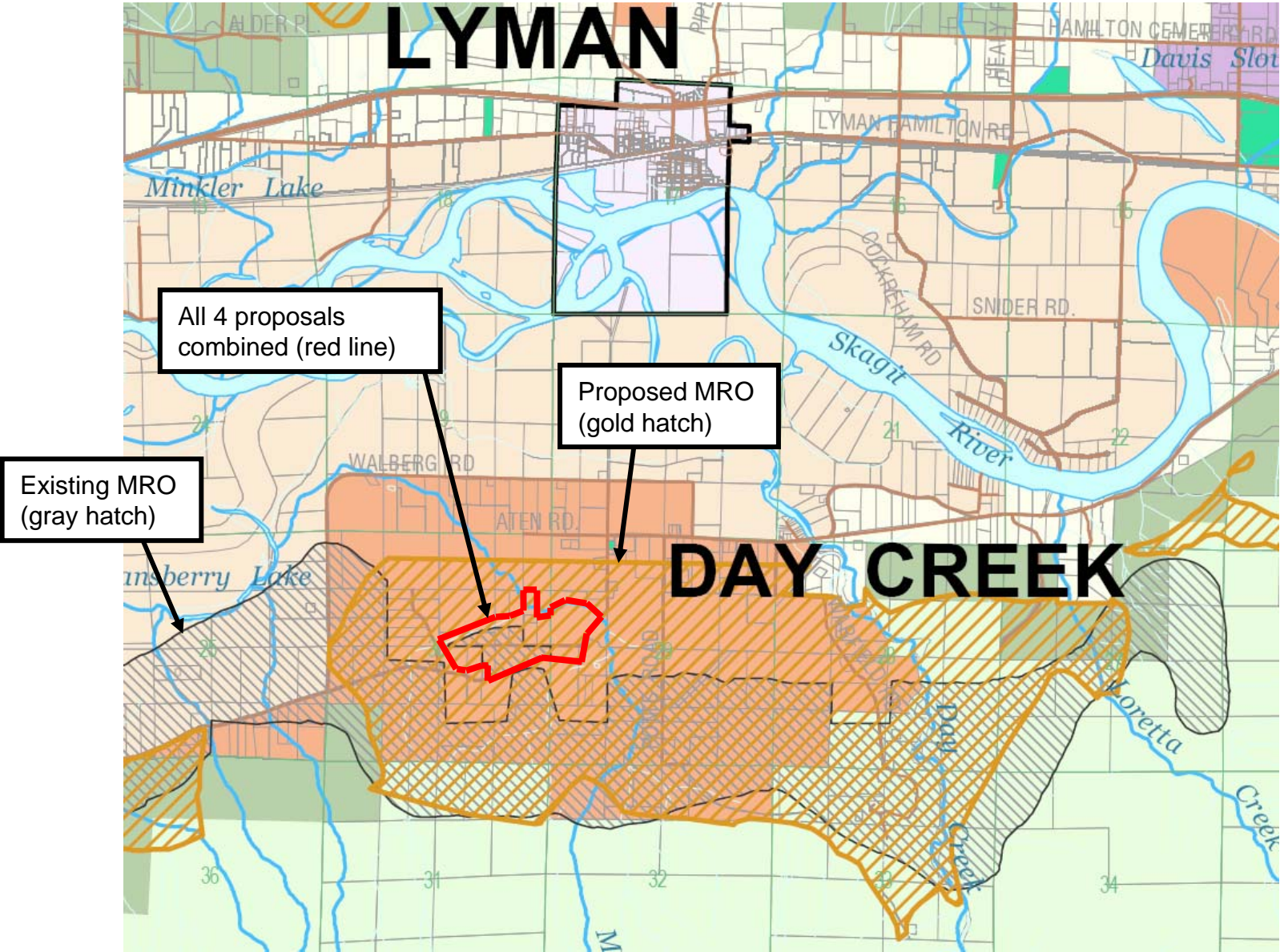
# CPA05-29 Trillium Corp.



# CPA05-29 Trillium Corp.

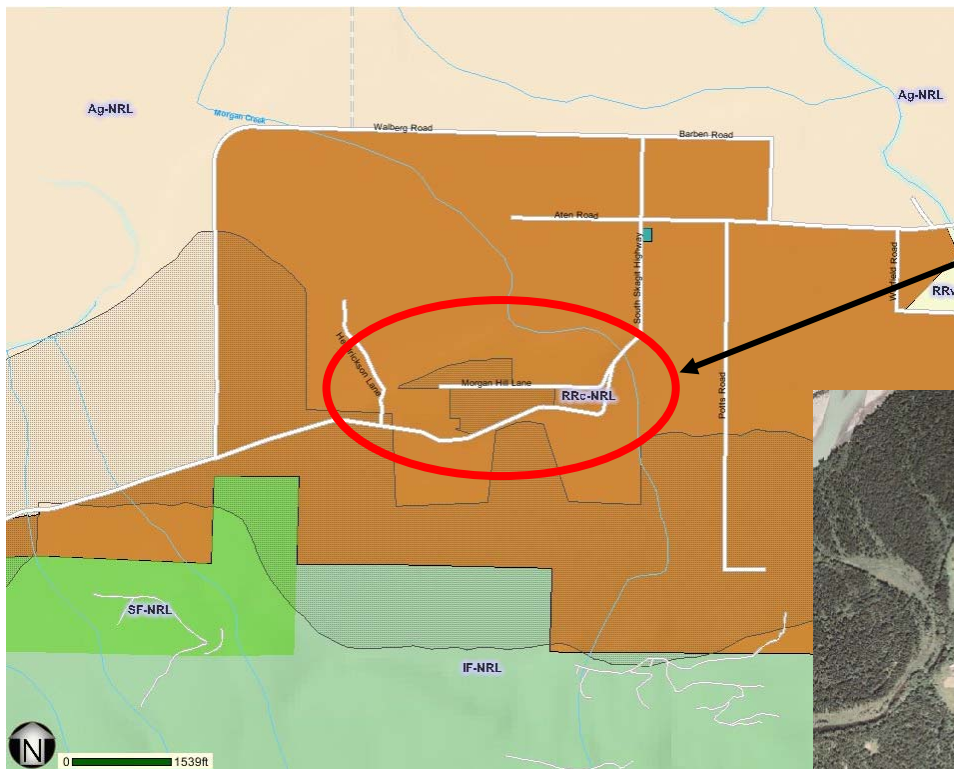


CPA05-31 Day Creek Sand & Gravel; CPA05-24 Nancie Elwick-Scott  
CPA05-32 Russell & Georgann Johnson; CPA05-34 Judy Anderson





# CPA05-31 Day Creek Sand & Gravel; CPA05-24 Nancie Elwick-Scott CPA05-32 Russell & Georgann Johnson; CPA05-34 Judy Anderson



Terrace formation – includes all 4 requests. Lies within larger propose MRO (see previous illustration).



# CPA05-32 Russell & Georgann Johnson

Addressed as part of CPA05-31

# CPA05-34 Judy Anderson

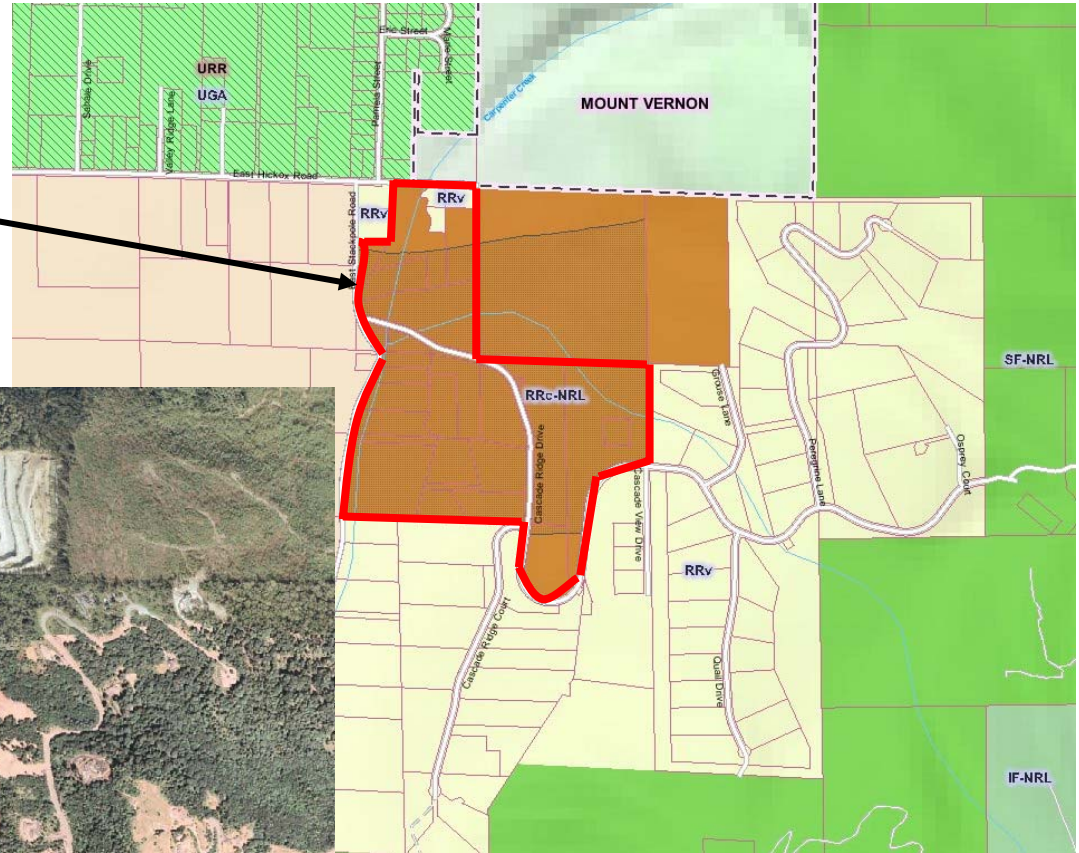
Addressed as part of CPA05-31

# CPA05-36 Robert & Nancy Tiffany

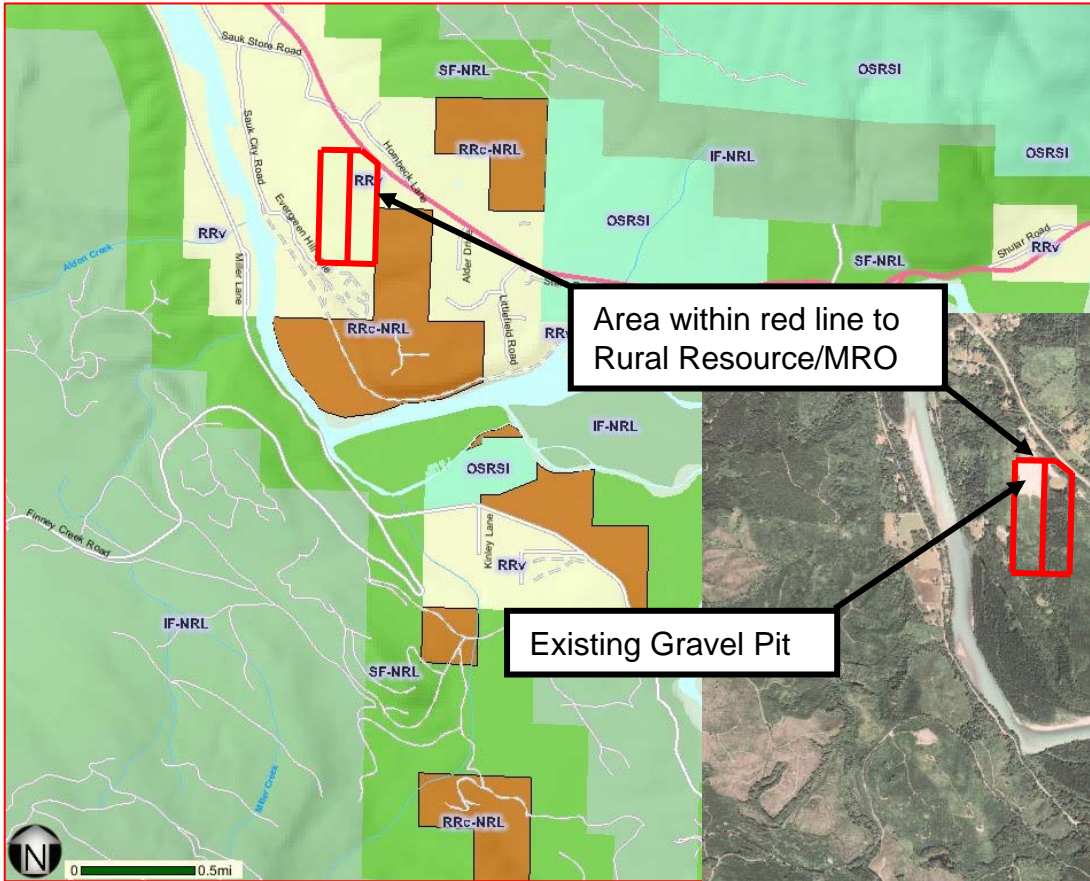
Addressed as part of CPA05-37

# CPA05-37 Carl Loeb; CPA05-36 Robert & Nancy Tiffany

All Rural Resource within red line to Rural Reserve

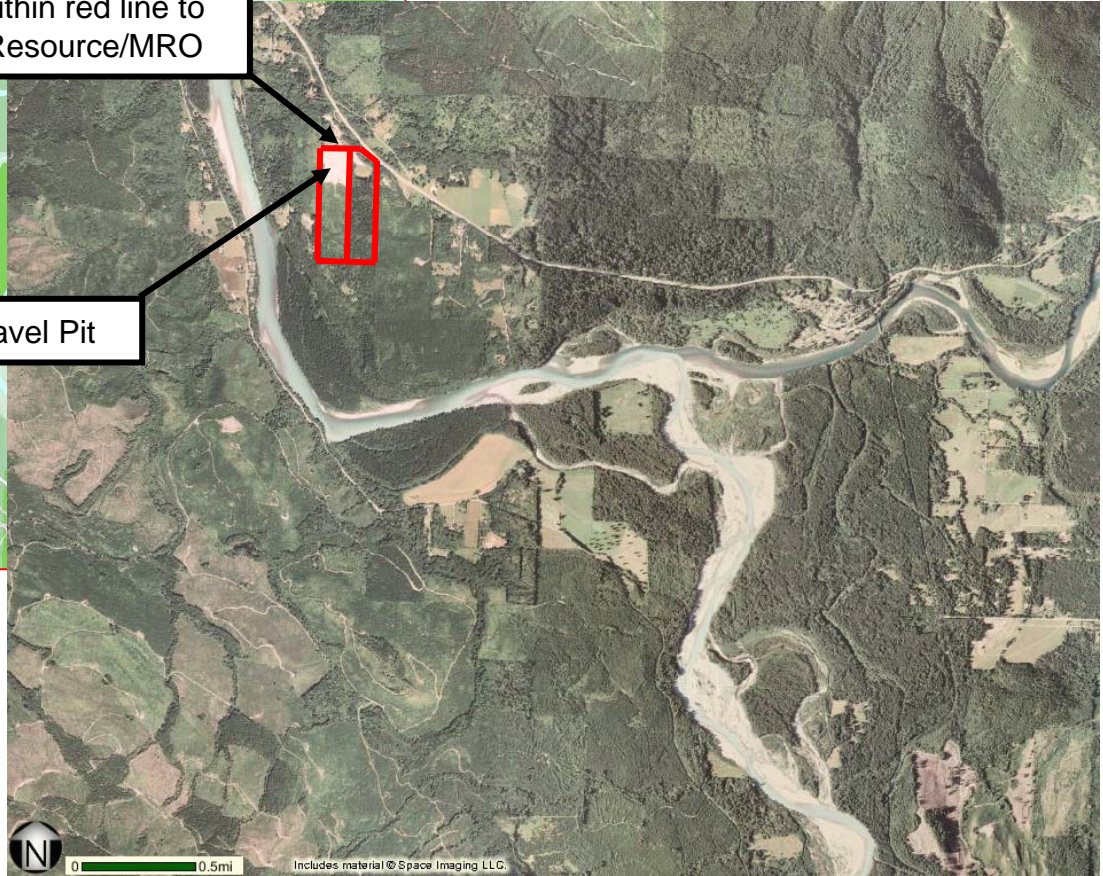


# CPA05-45 3dh Aggregates; CPA05-106a Goodyear-Nelson; SC05-37 Skagit County

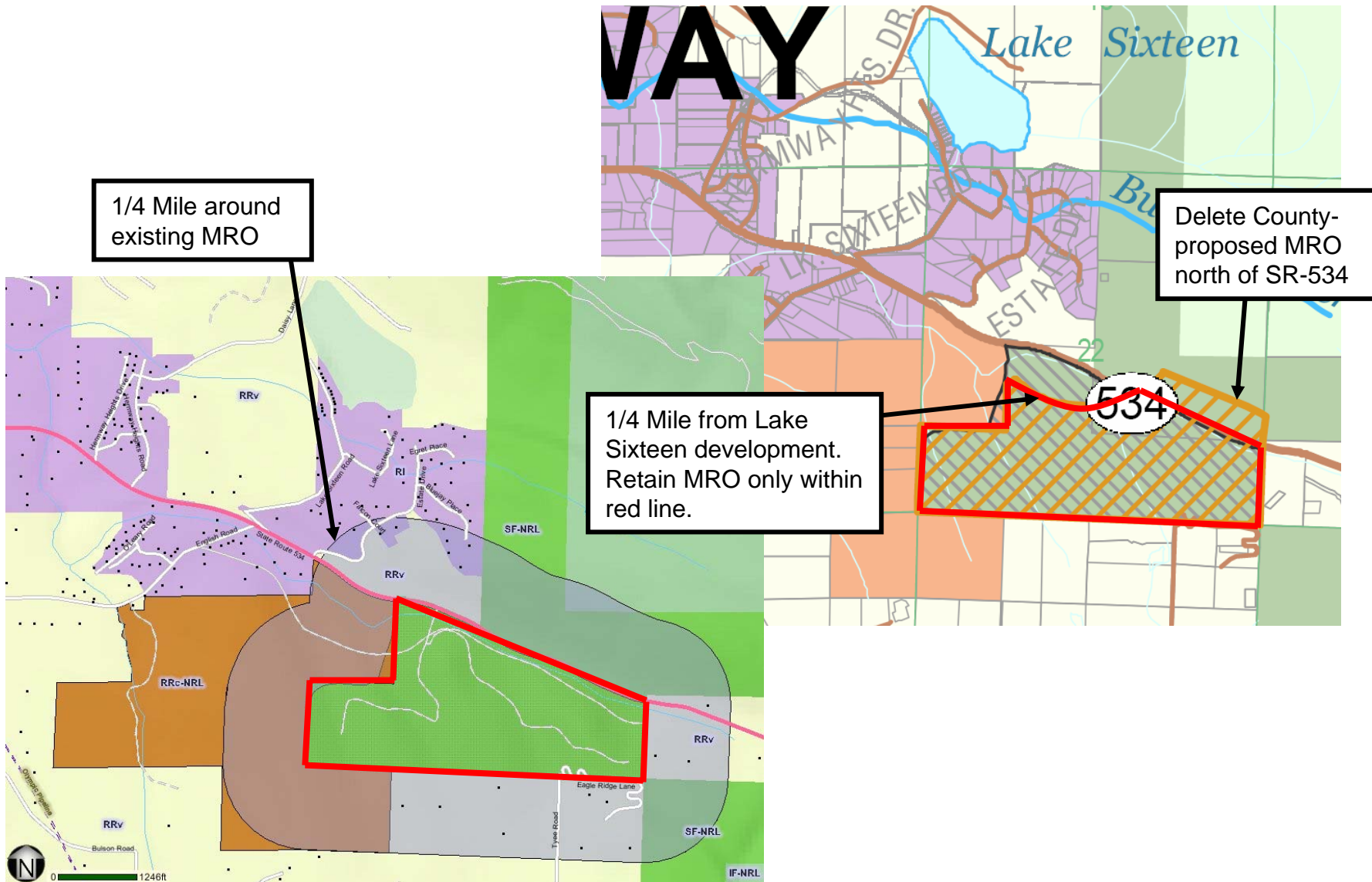


Area within red line to Rural Resource/MRO

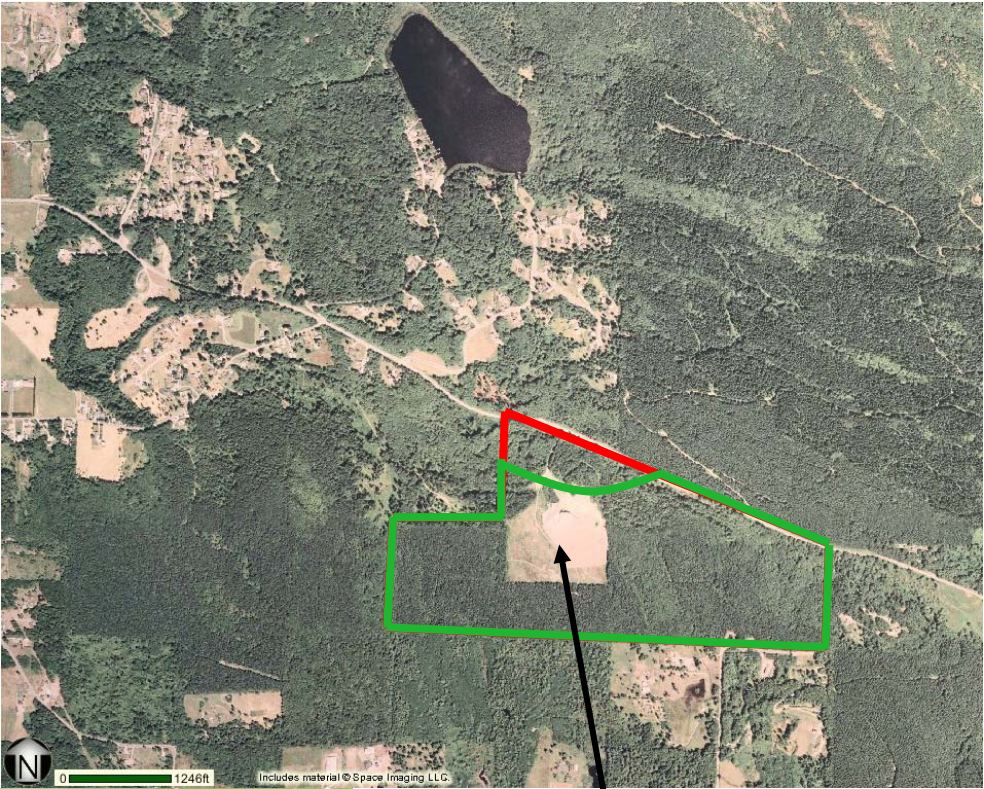
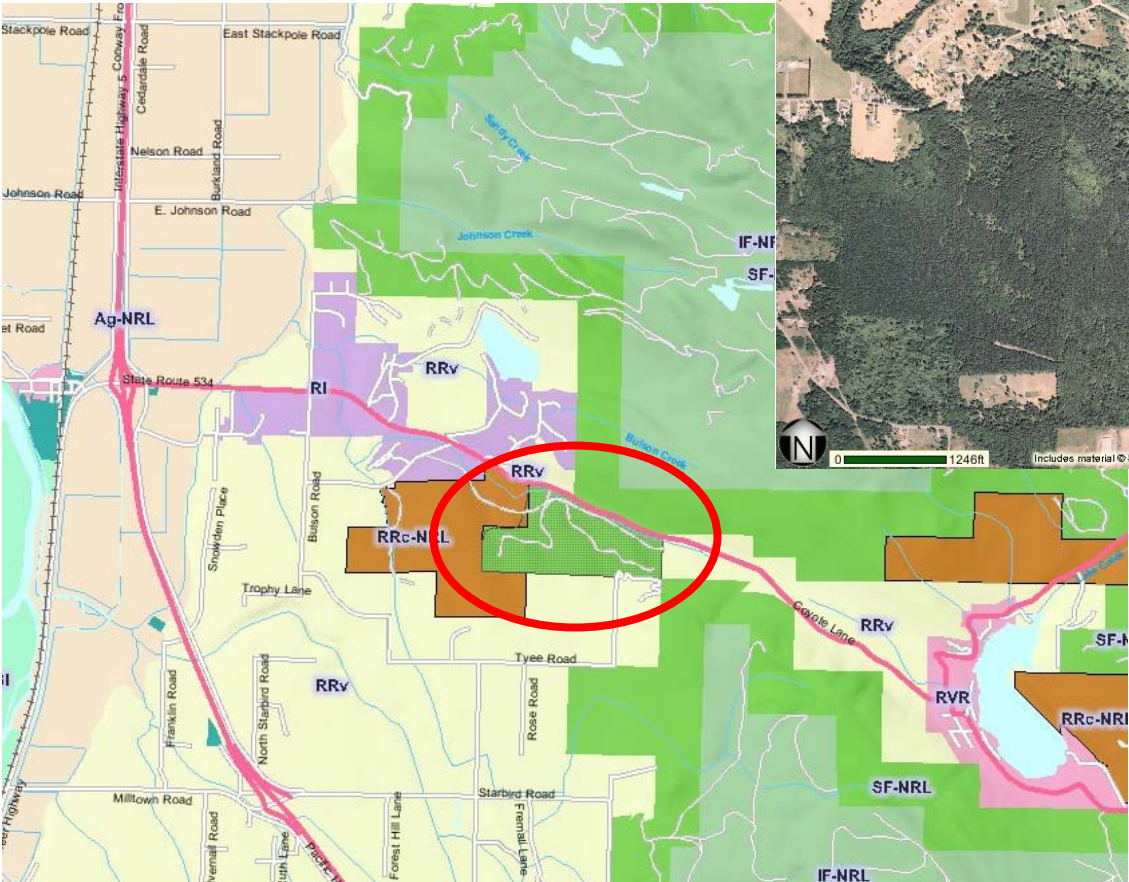
Existing Gravel Pit



# CPA05-68/69 – Hemmat/Needham



# CPA05-68/69 – Hemmat/Needham



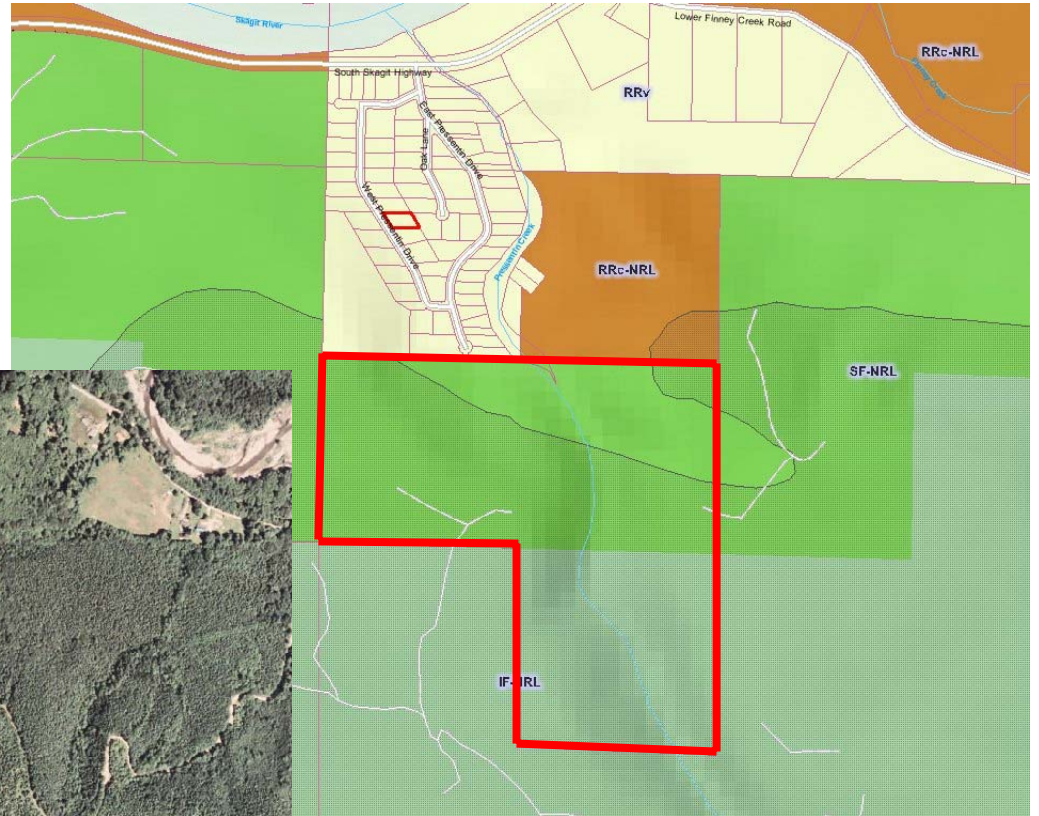
Existing gravel pit



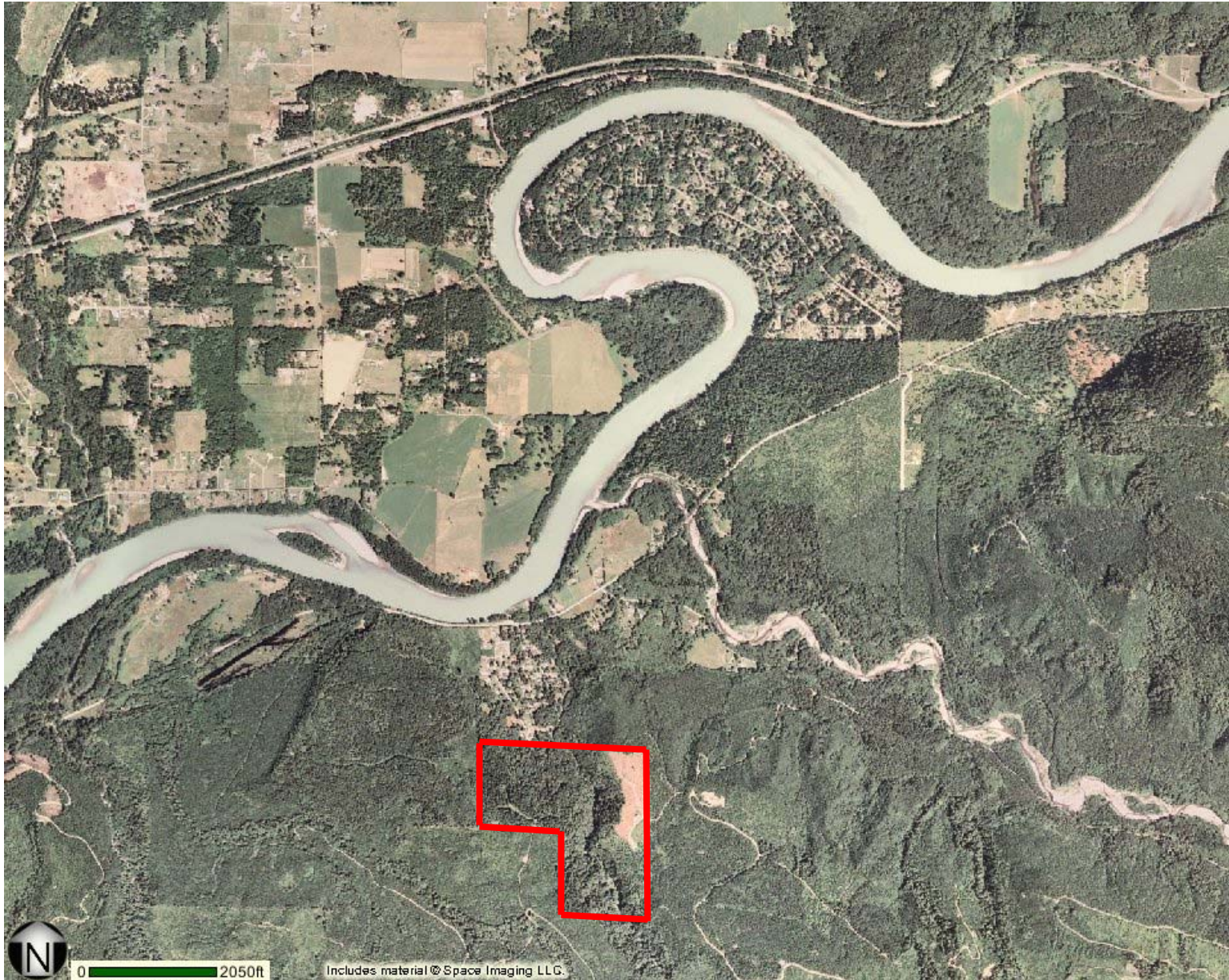
CPA05-106a Goodyear-Nelson SC05-37 Skagit County

Addressed as part of CPA05-45

# CPA05-106b&c Goodyear Nelson



# CPA05-106b&c Goodyear Nelson



# SC05-37 Skagit County

Addressed as part of CPA05-45