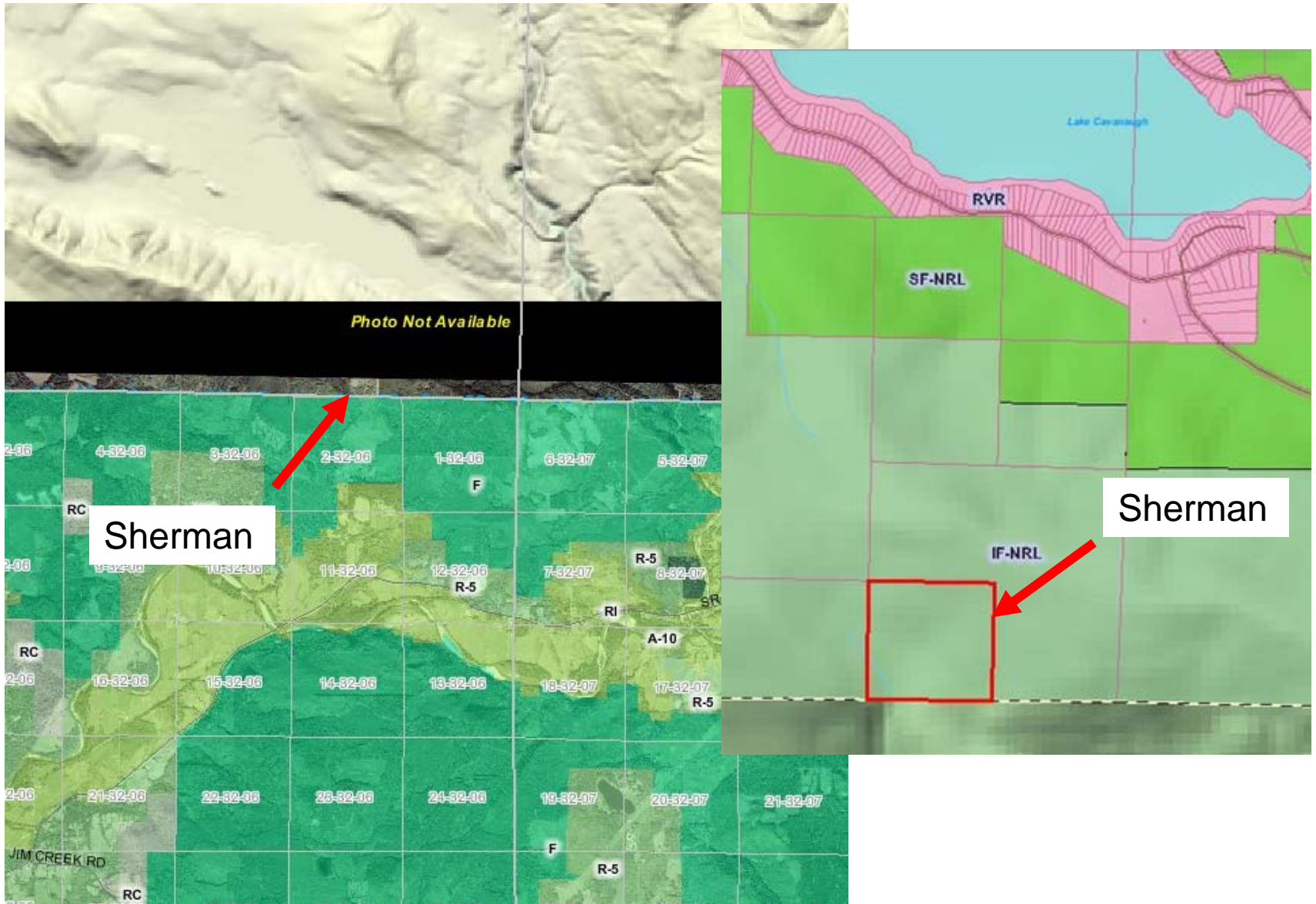


# GMA Update Map Deliberations

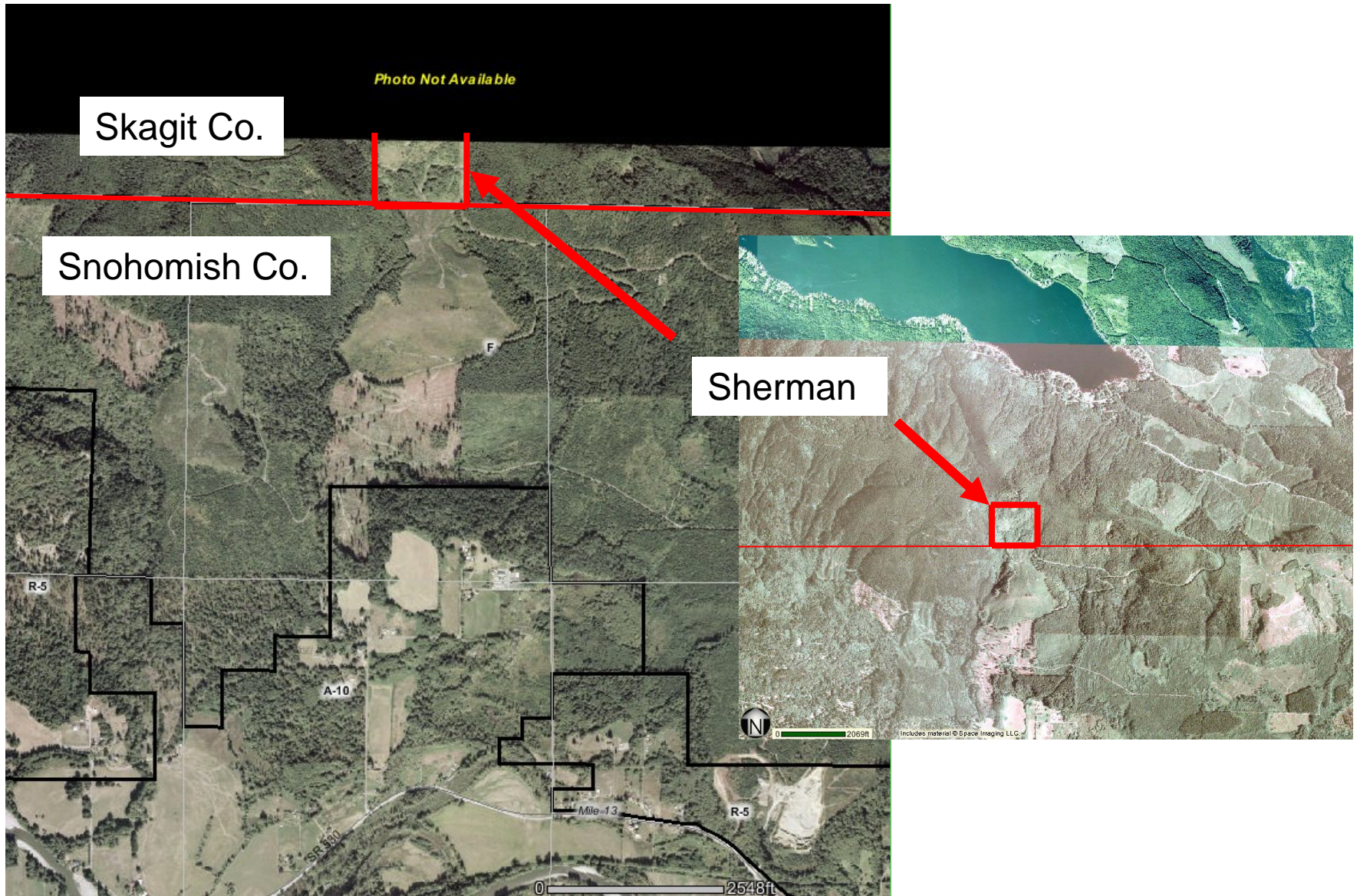
## Supplemental Maps and Illustrations

Attachment A  
Memorandum to Skagit County Planning Commission,  
Forest-NRL Mapping, December 7, 2006

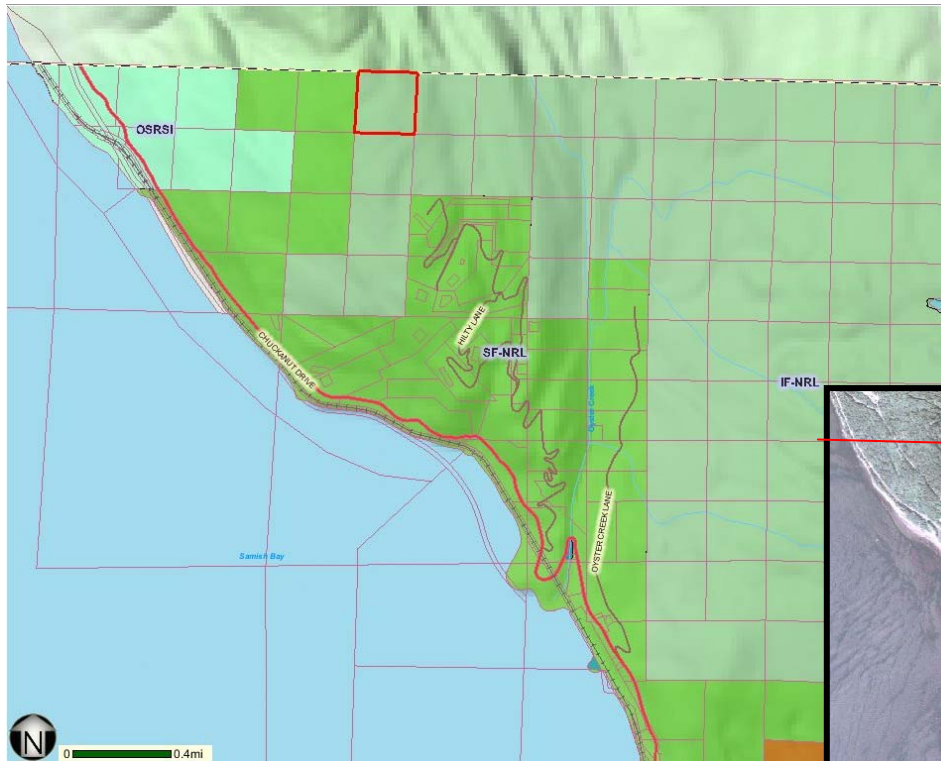
# Sherman (CPA05-09)



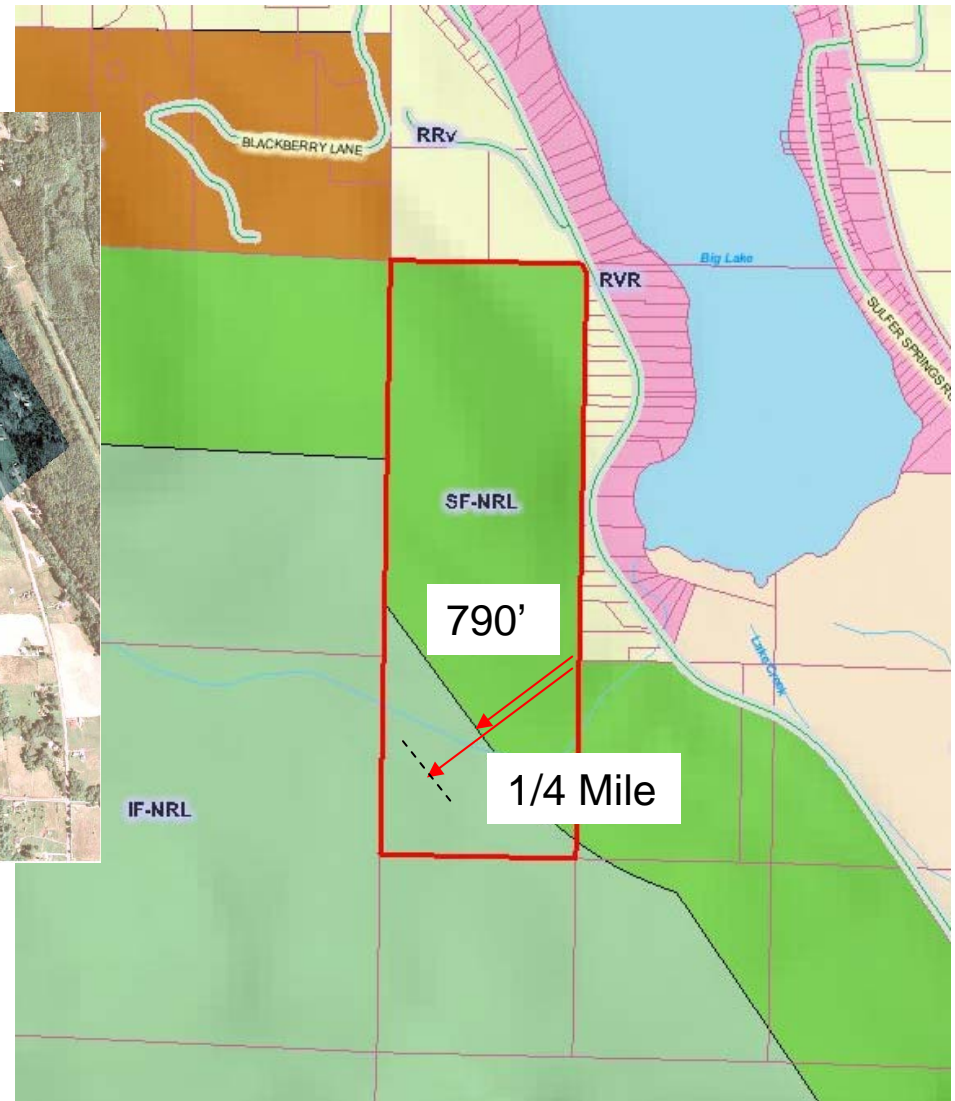
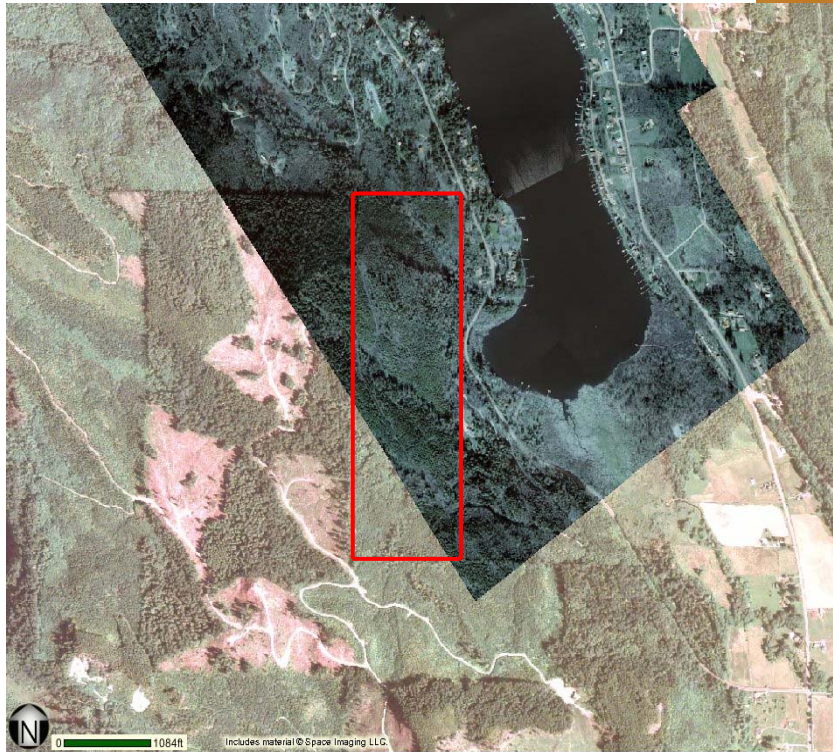
# Sherman (CPA05-09)



# Great Western (CPA05-10)

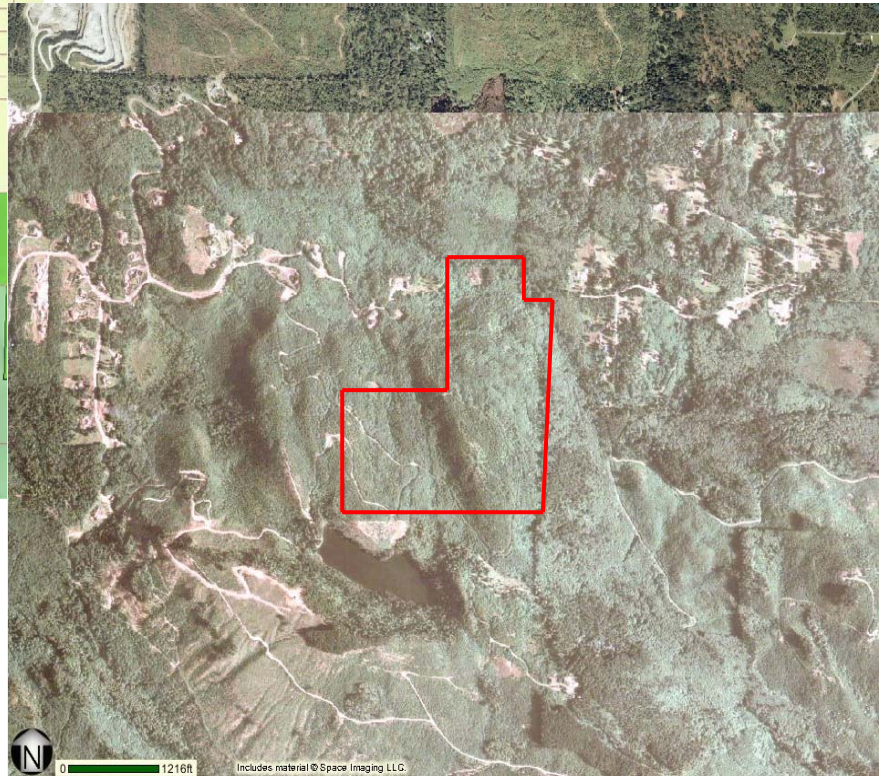
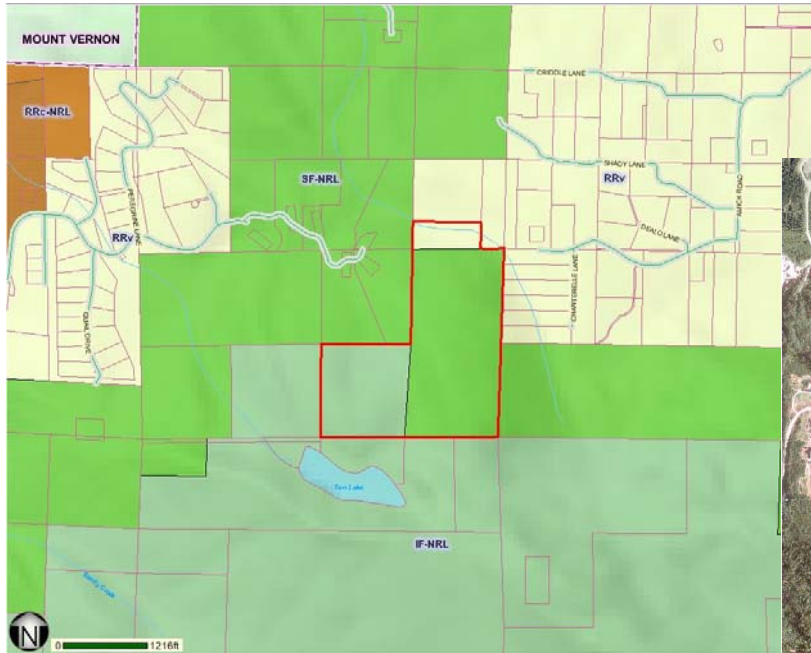


# C&G Timber (CPA05-11)



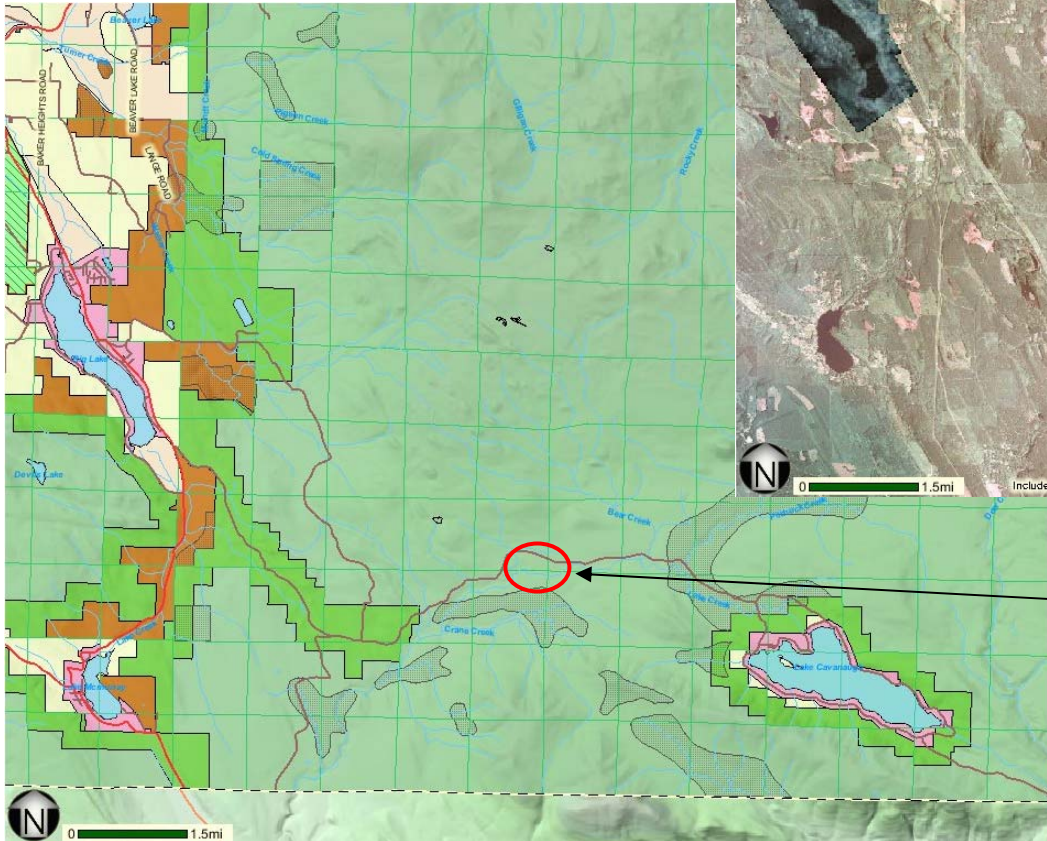
Note: Similarity of aerial photography pattern and the IF/SF line is coincidental.

# Kennell (CPA05-13)



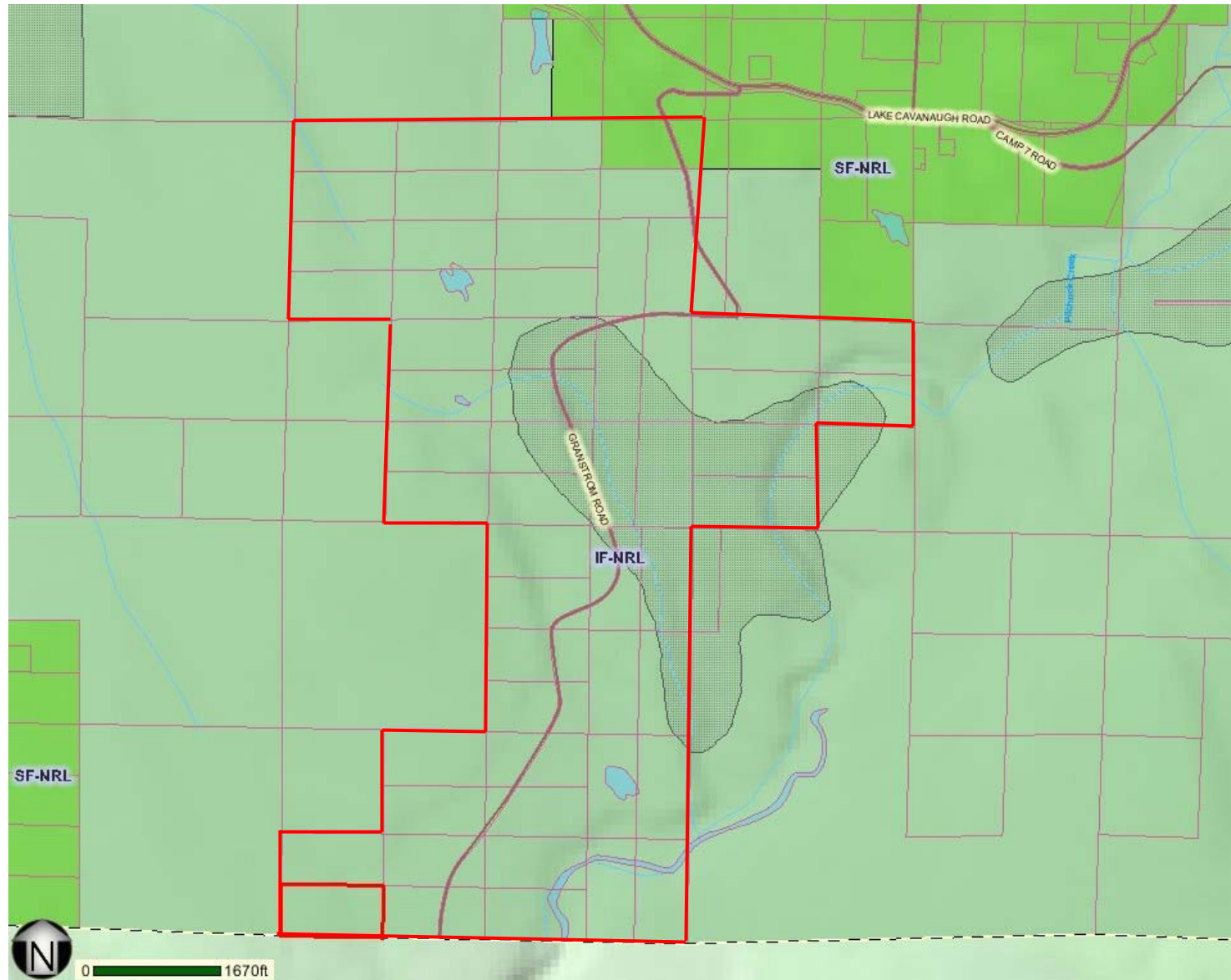
See Correspondence Volume 1, p. 189  
for diagram of unimproved road network.

# Hayes (CPA05-15)



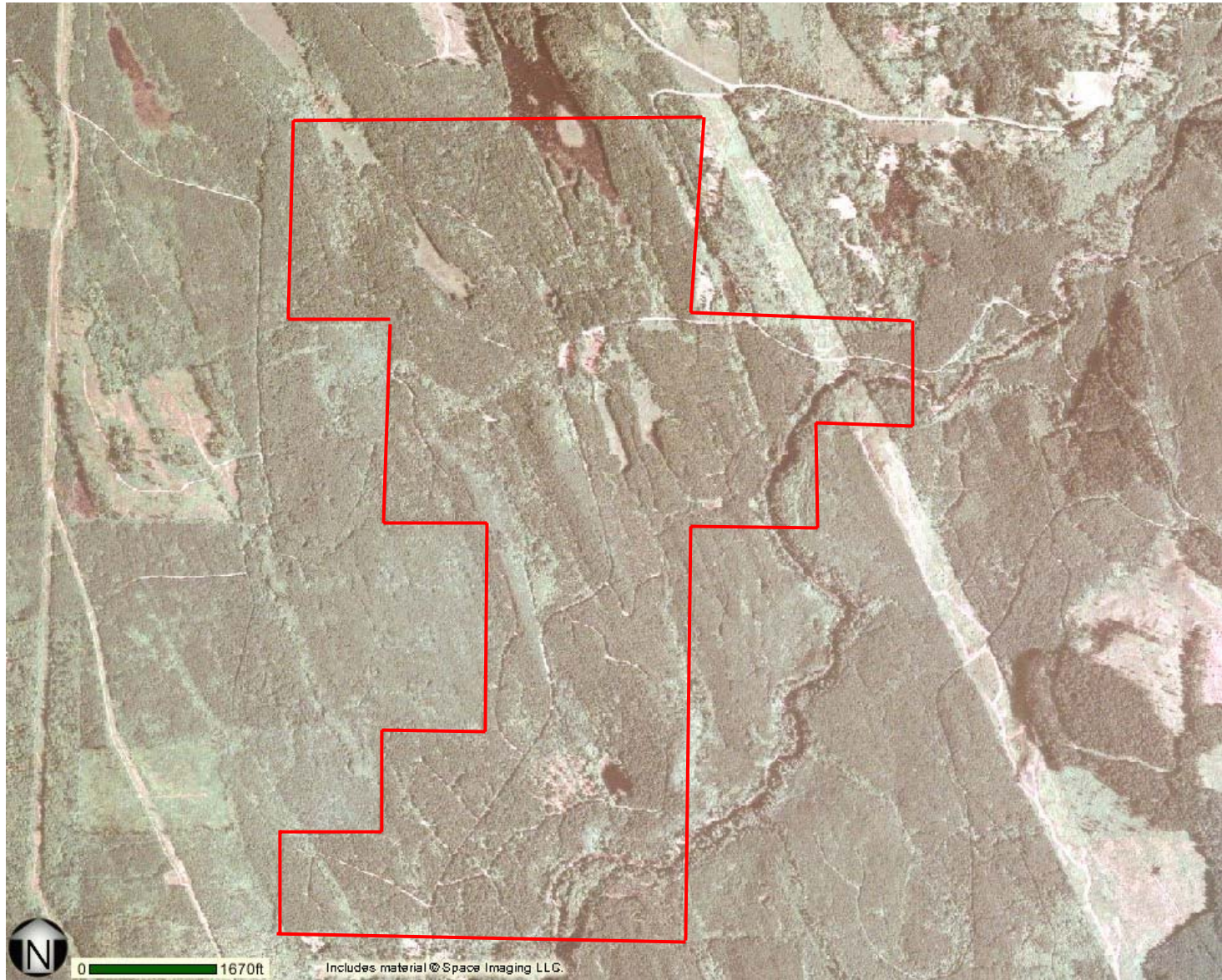
General location

# Sanfi Acres (CPA05-14)

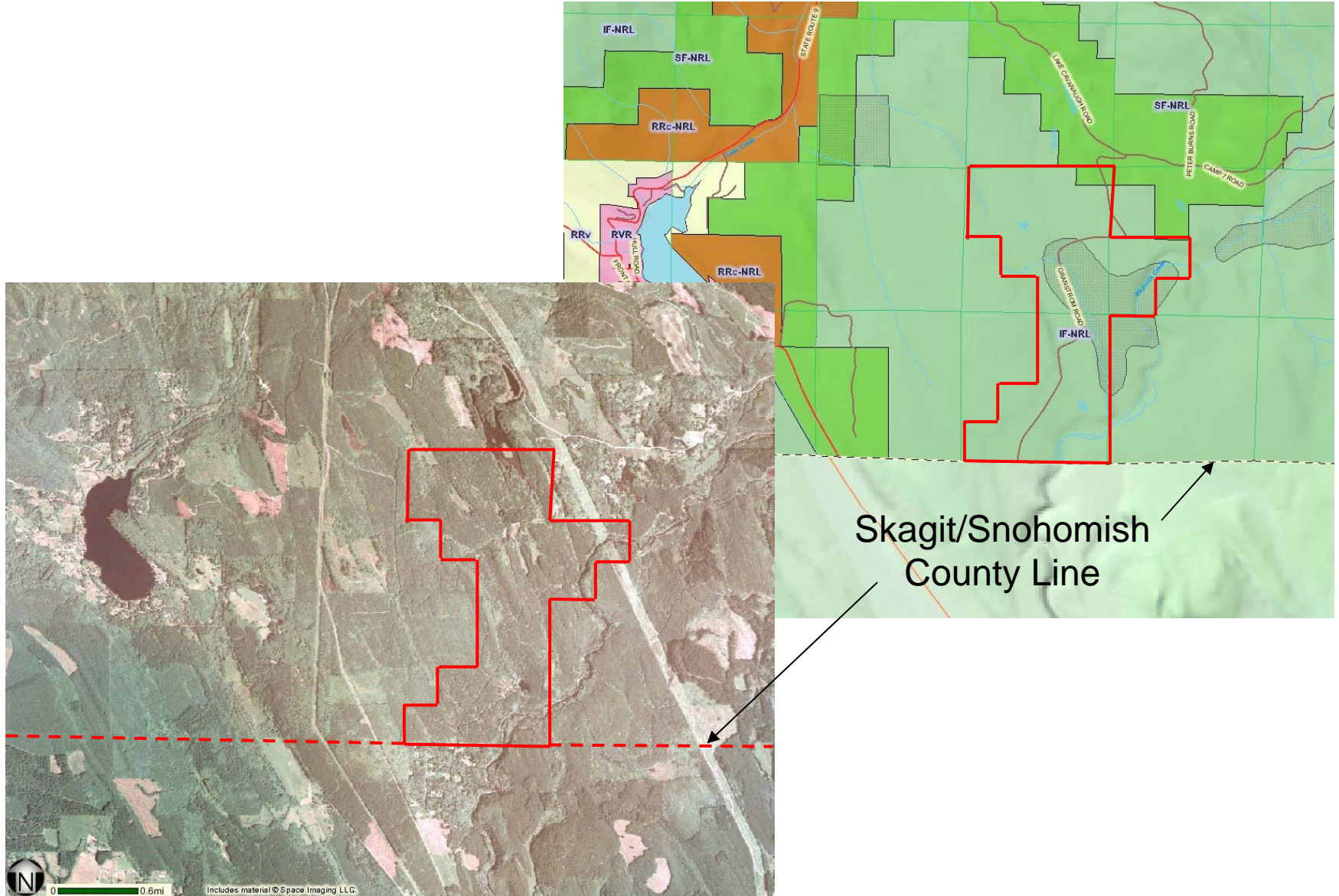




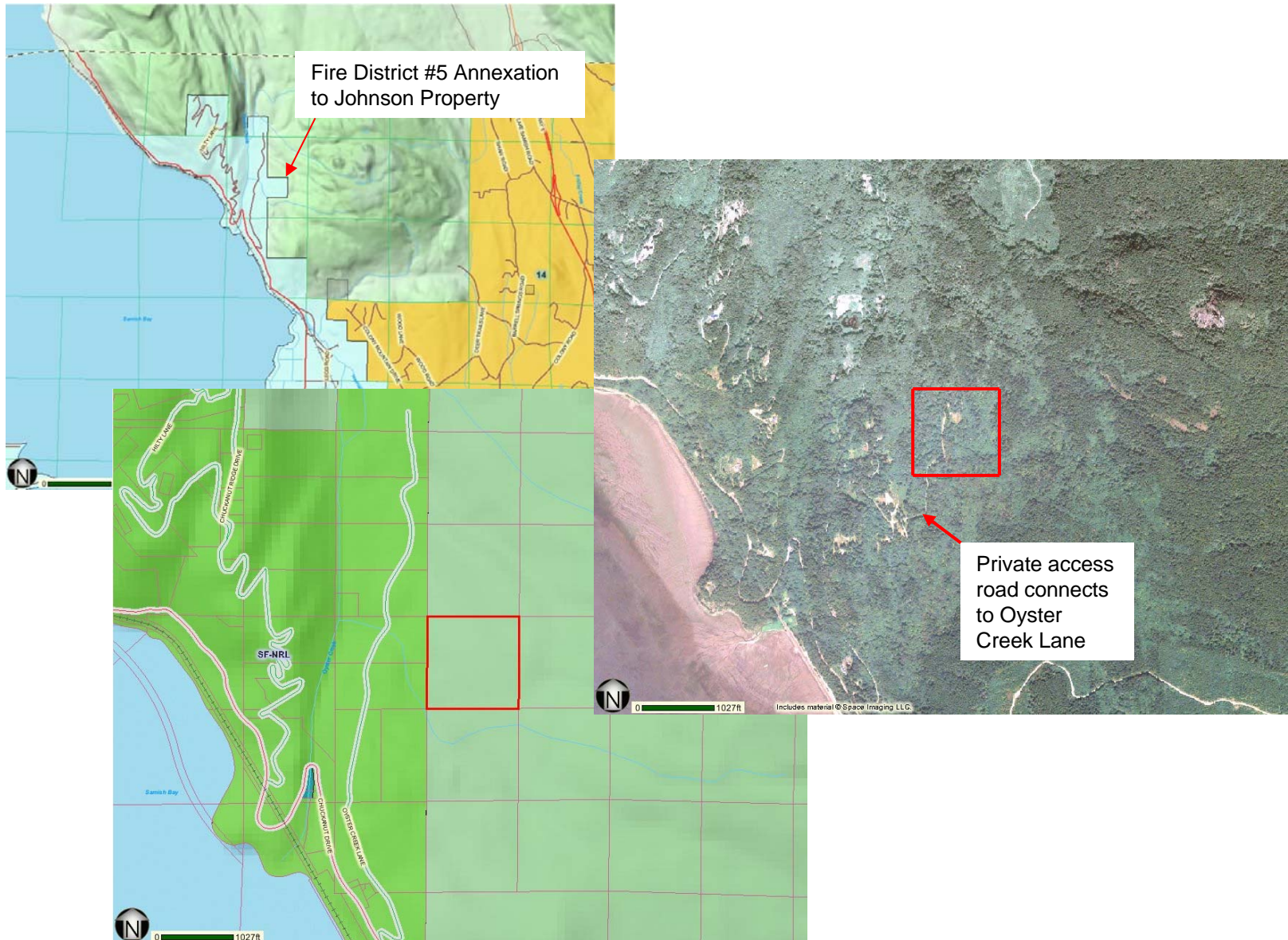
# Sanfi Acres (CPA05-14)



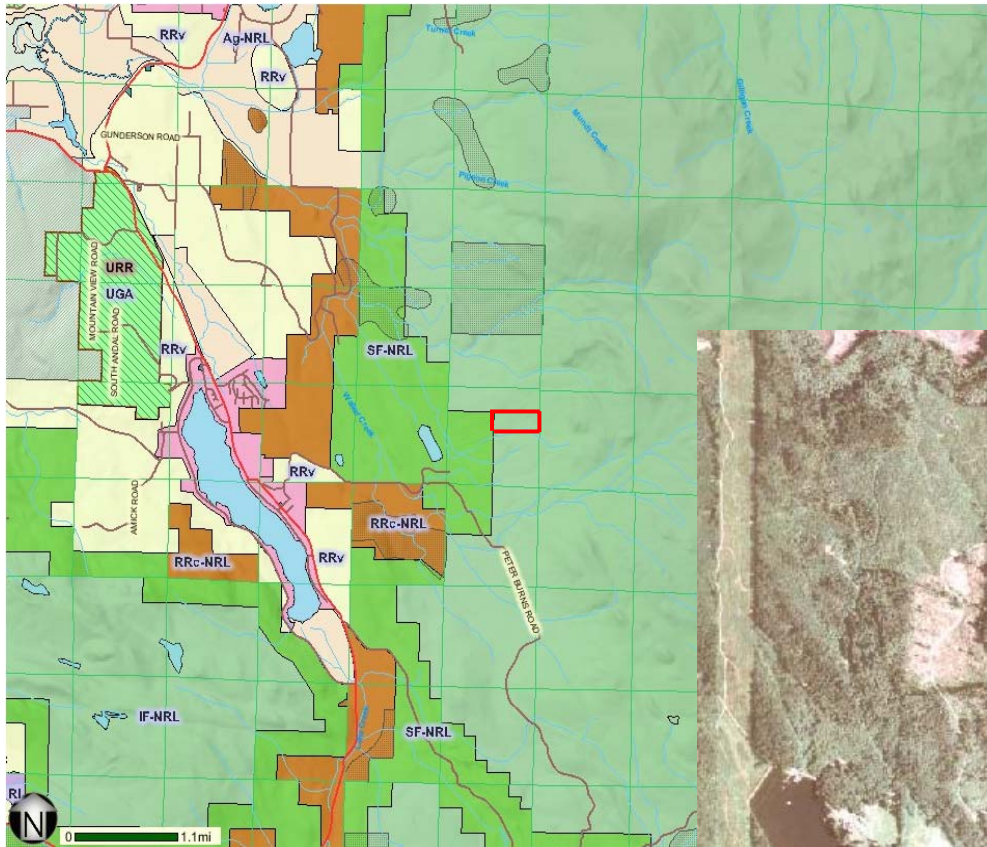
# Sanfi Acres (CPA05-14)



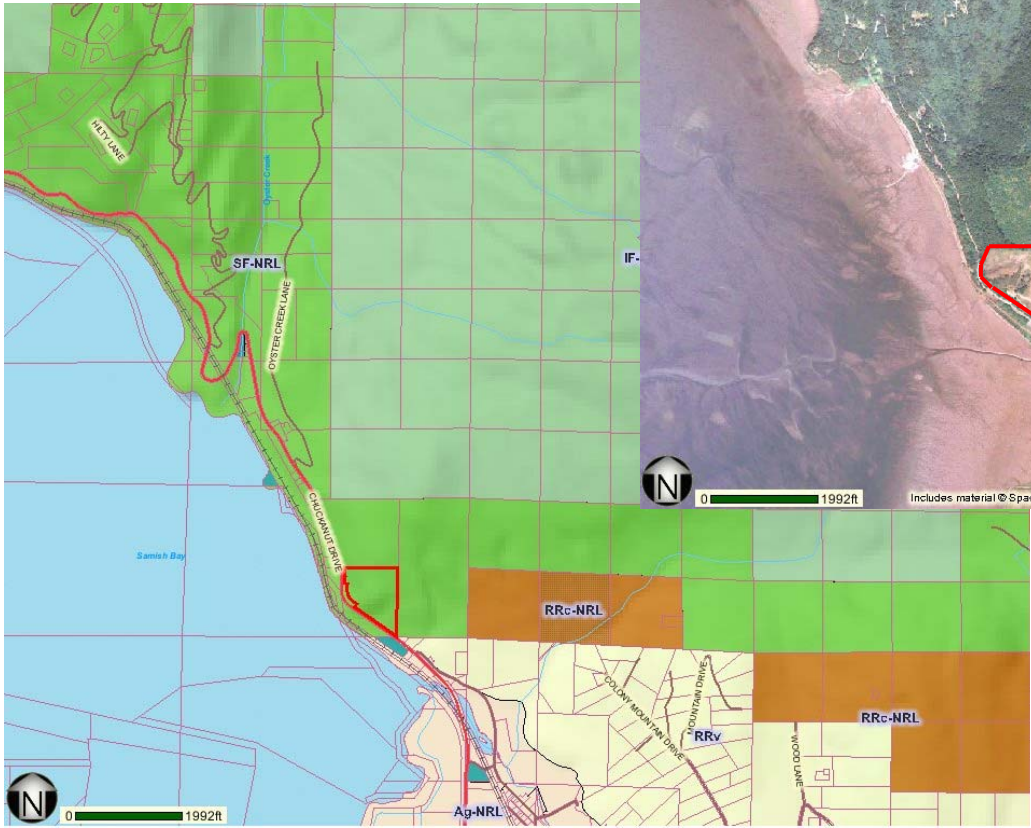
# Johnson (CPA05-16)



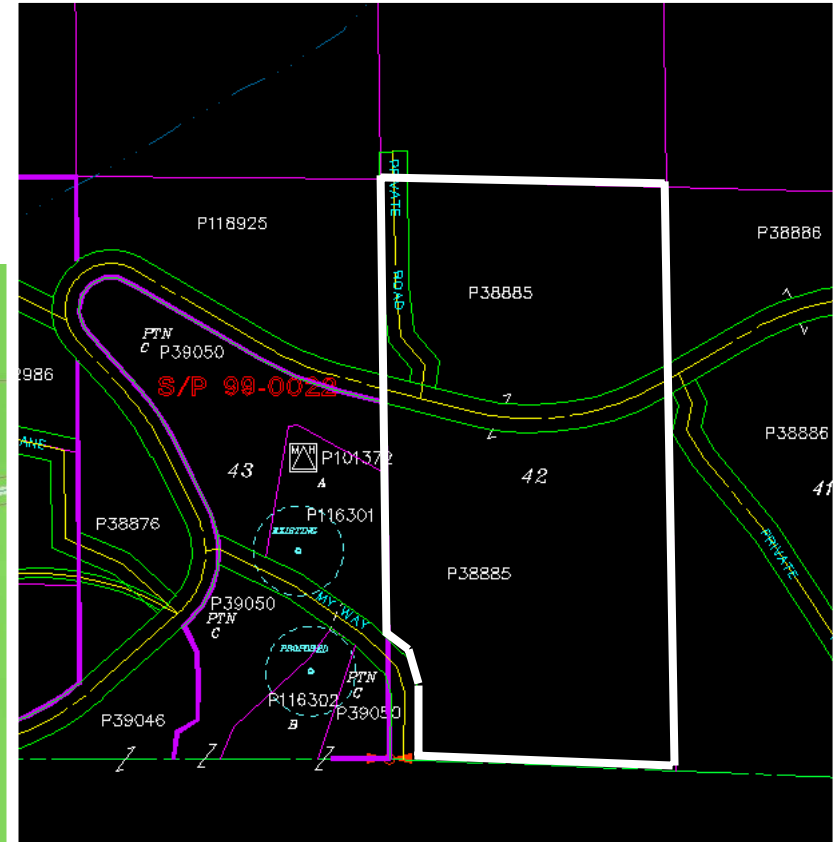
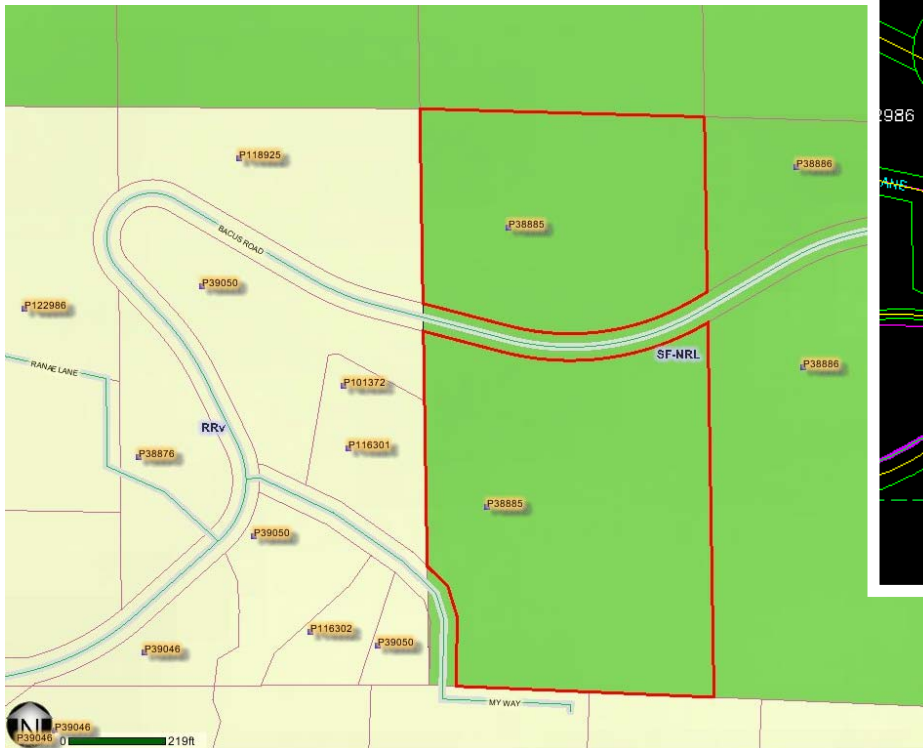
# Schmidt (CPA05-17)



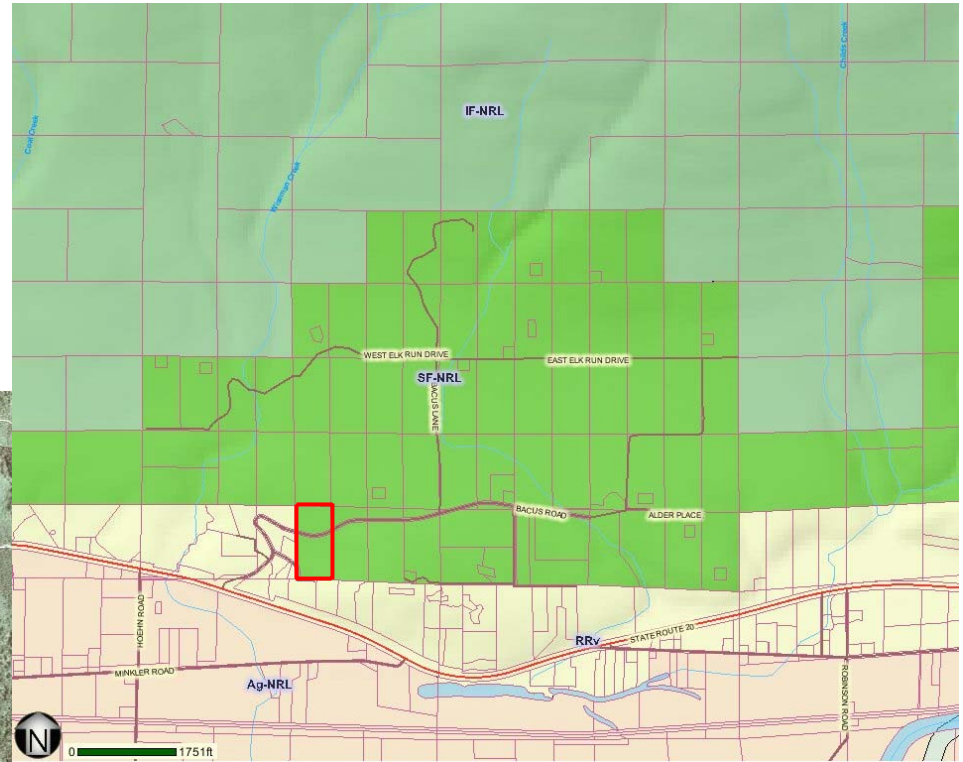
# Hammer (Thomson CPA05-63)



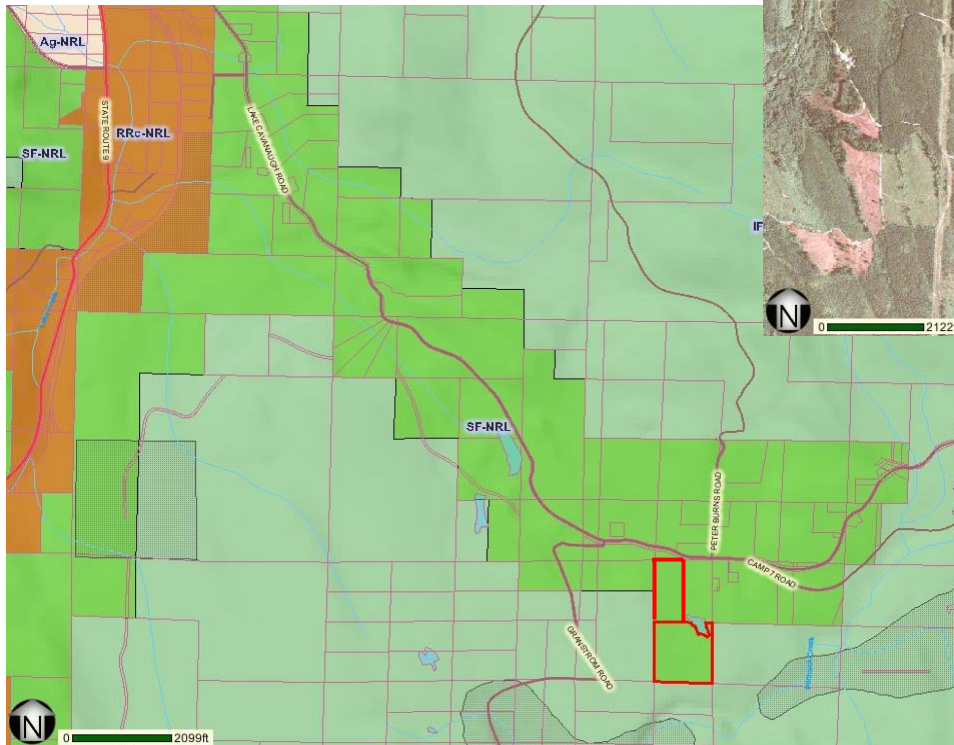
# Daher (Rich CPA05-64)



# Daher (Rich CPA05-64)

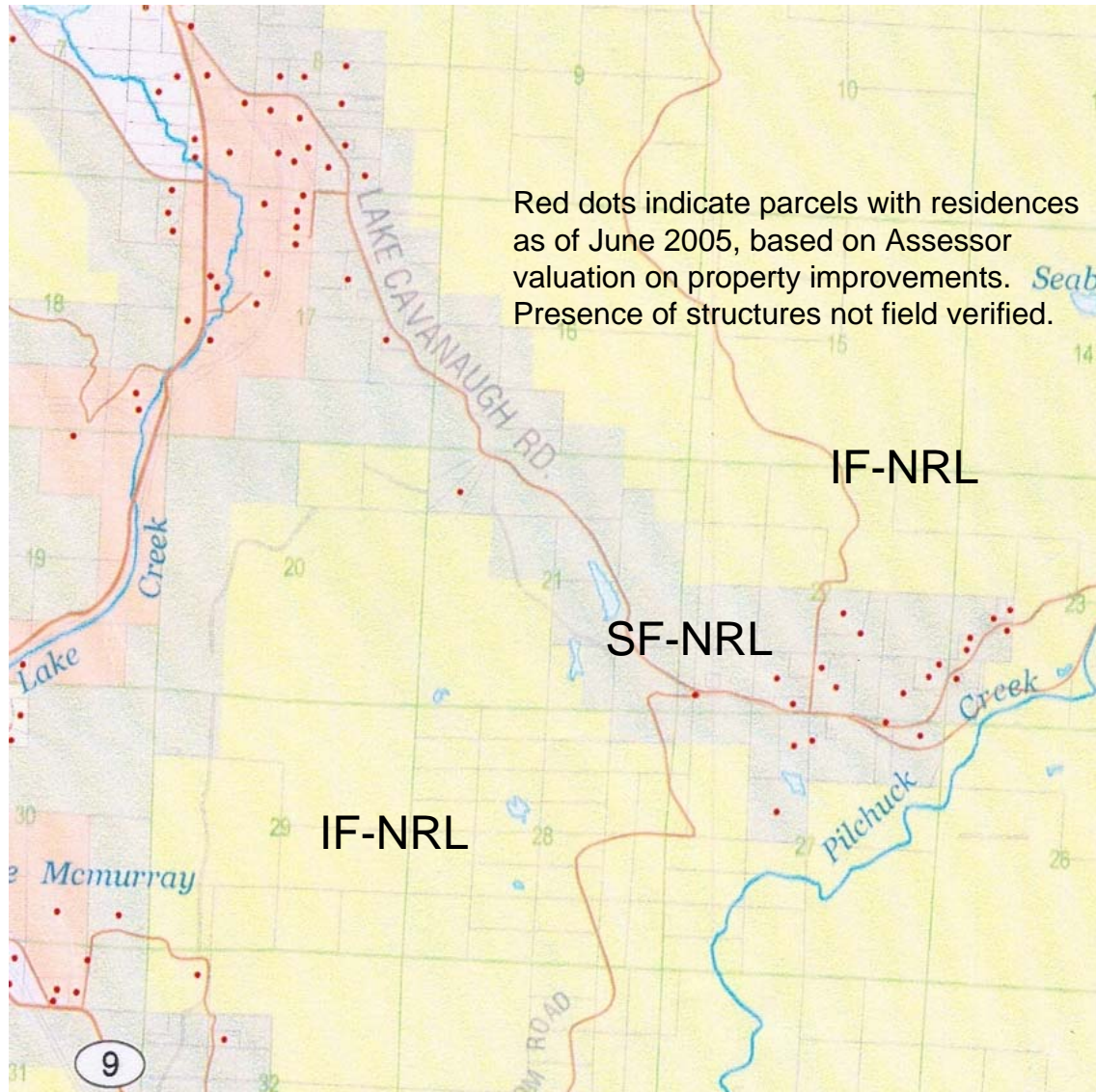


# Joiner (and Lindborg CPA05-66)

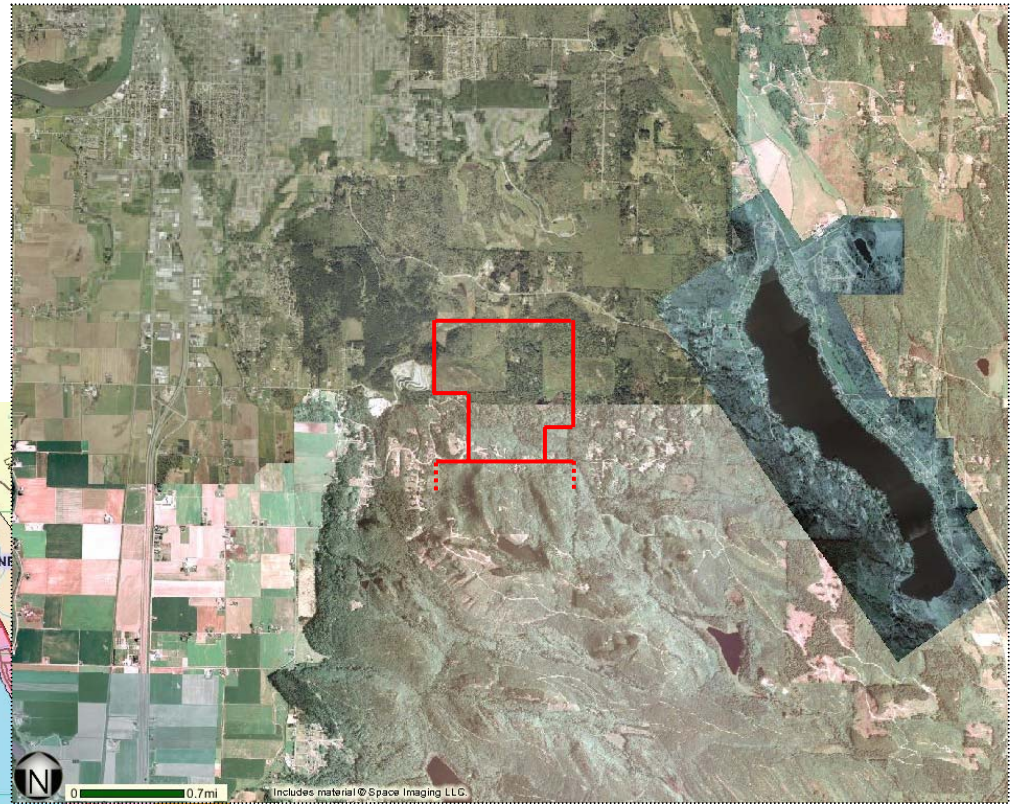
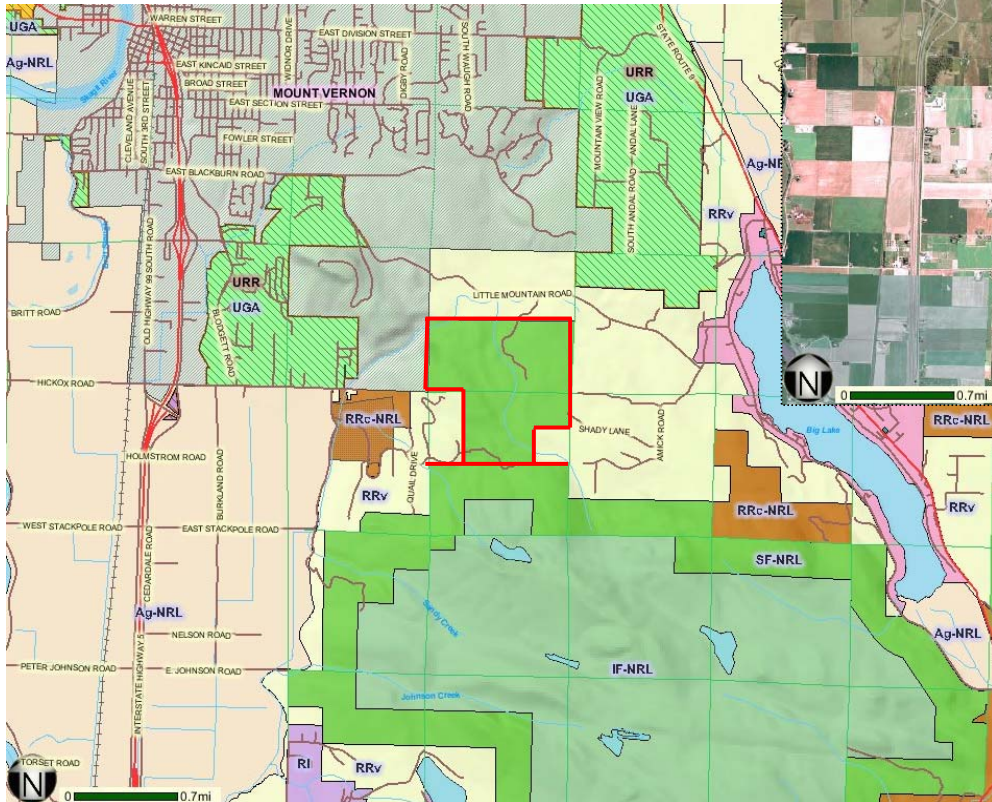




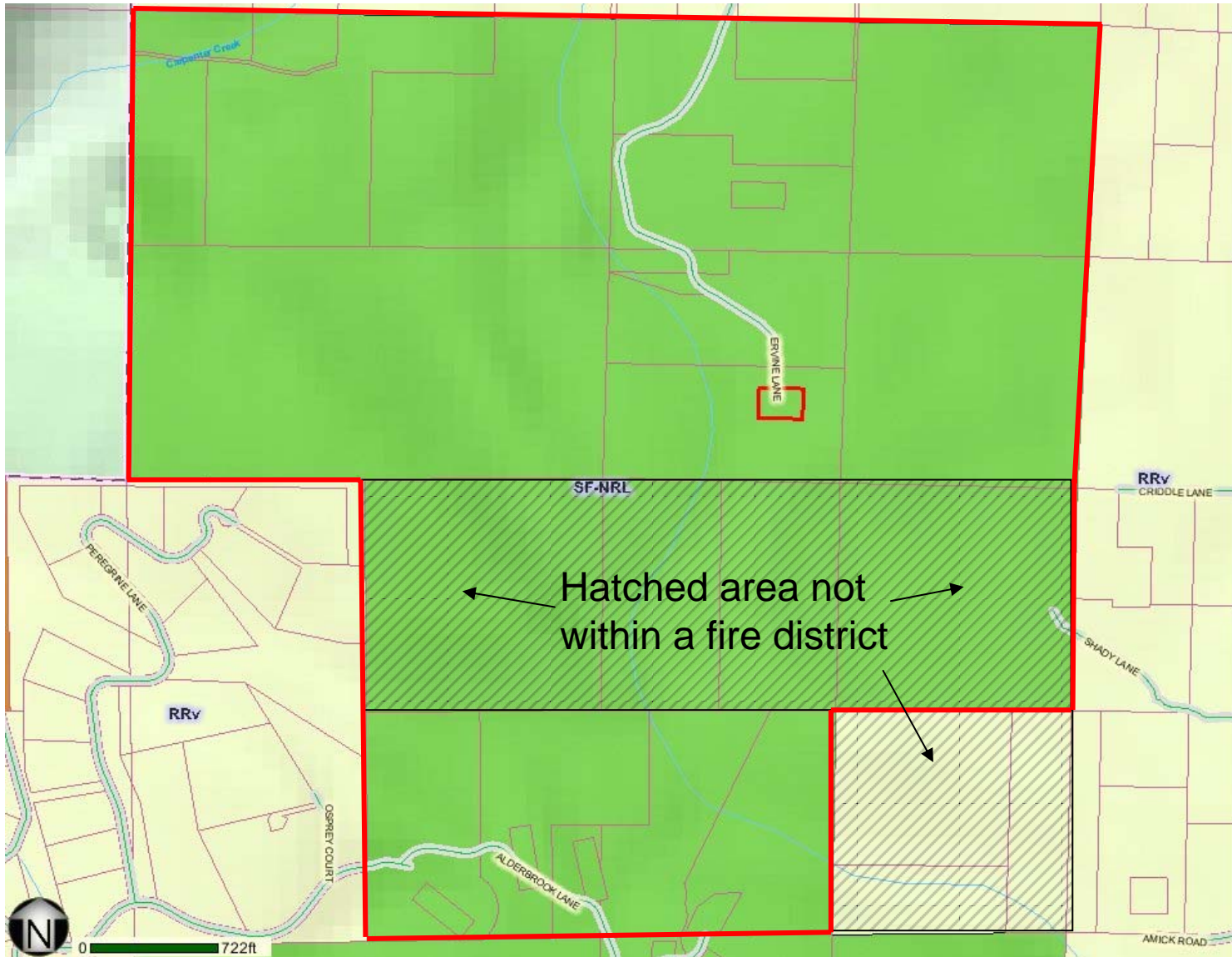
# Joiner (and Lindborg CPA05-66)



# Ervine (Irvine CPA05-67)



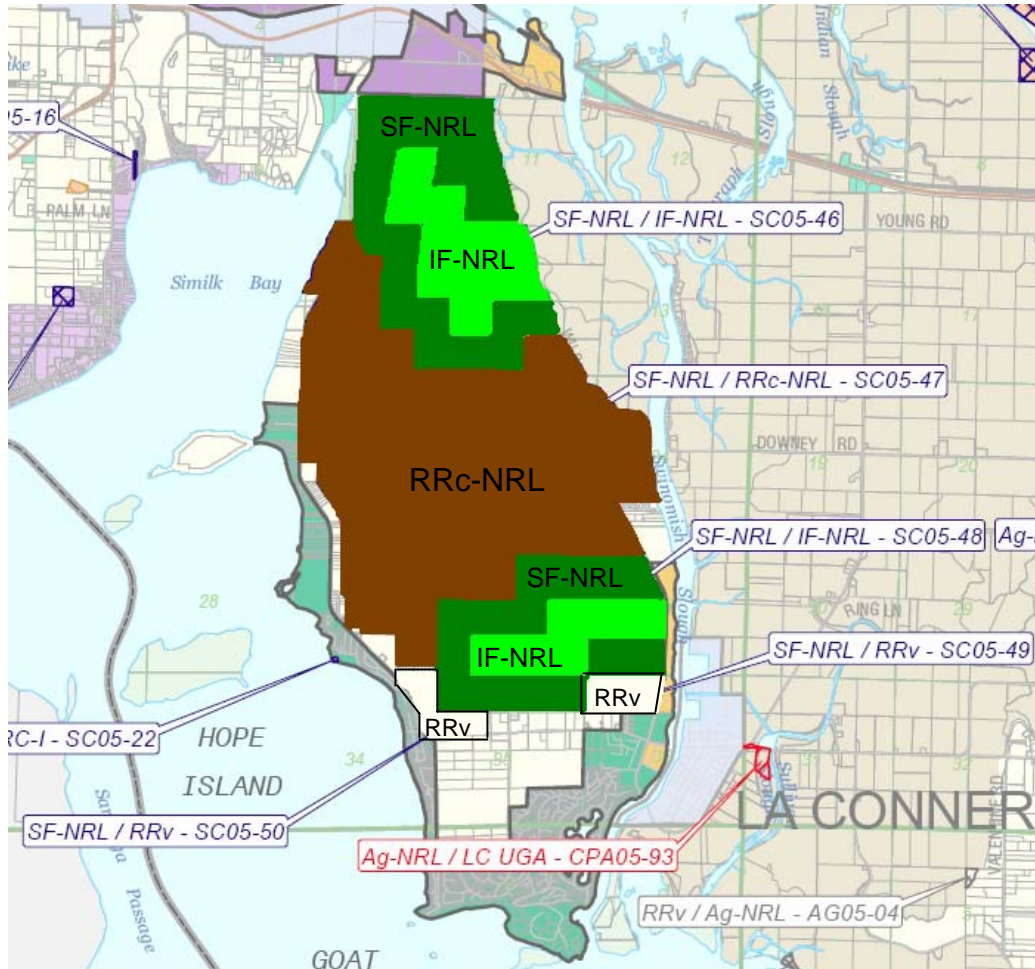
# Ervine (Irvine CPA05-67)



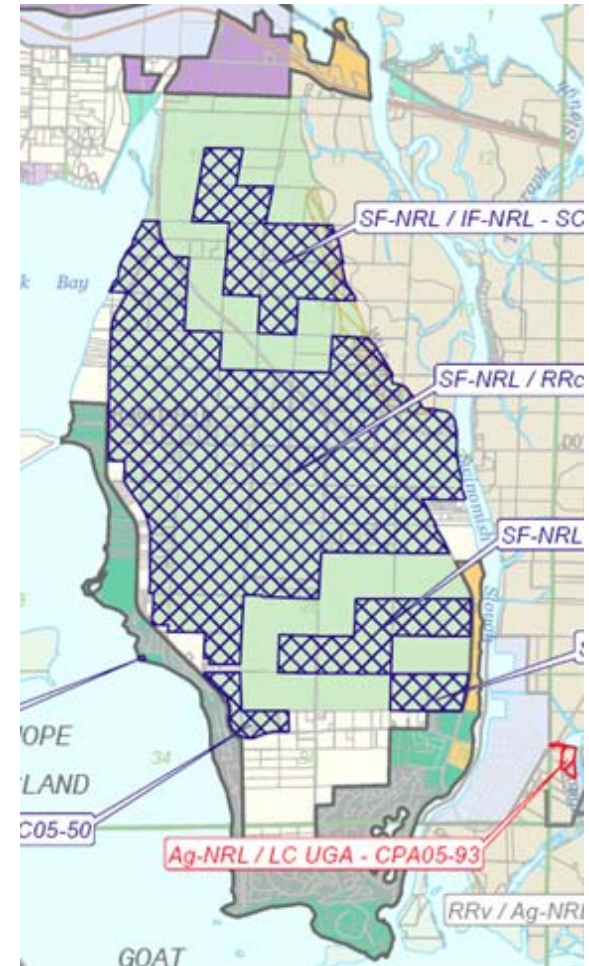
# Ervine (Irvine CPA05-67)



# Skagit County (SC05-46 to 50)



Proposed Zoning Changes Highlighted  
(Does not depict proposed MRO – N.E. edge)



Proposal As Depicted Online