

Population Health Trust Advisory Committee Meeting

Skagit County Board of Health
October 1st, 2015



Skagit County Board of Health - Population Health Trust

"Always working for a safer and healthier Skagit County"

*Kenneth A. Dahlstedt, Chair
Lisa Janicki, Commissioner
Ron Wesen, Commissioner*

Agenda

- Welcome and Introductions
- Steering Committee Update
- Business Advisory Committee Update
- Data Carousel Demonstration– Mo Pettitt
- Break
- Data Carousel Planning
- Community Forums Planning
- Forces of Change Presentation – Diane Smith and Don McMoran WSU Extension
- Transition from Assessment to Planning
 - January 2016 Retreat?
 - New Board Members
 - February – Board Member renewals
- Summary, next steps and closing



Skagit County Board of Health - Population Health Trust

"Always working for a safer and healthier Skagit County"

*Kenneth A. Dahlstedt, Chair
Lisa Janicki, Commissioner
Ron Wesen, Commissioner*

FEATURED TOP STORY

Quality of life survey aims to define healthy community

By BRANDON STONE @Brandon_SVH Sep 30, 2015 Comments



Scott Terrell / Skagit Valley Herald

Bern and Marilyn Miller of Blaine walk Willie, their Labradoodle, along Mount Vernon's riverfront walkway Tuesday while waiting to meet friends for lunch.

The Skagit Valley Population Health Trust has released the findings of a 1,500-person survey on quality of life, the first countywide report of its kind.

Topic

Stress

Time

Income

Physical &

Healthy f

Employment

District 2

✓

✓

✓

✓

✓

✓

District 3

✓

✓

✓

✓

✓



Skagit County Board of Health - Population Health Trust

"Always working for a safer and healthier Skagit County"

*Kenneth A. Dahlstedt, Chair
Lisa Janicki, Commissioner
Ron Wesen, Commissioner*



Surgeon General Vice Admiral (VADM) Vivek H. Murthy, M.D., M.B.A.



Skagit County Board of Health - Population Health Trust

"Always working for a safer and healthier Skagit County"

*Kenneth A. Dahlstedt, Chair
Lisa Janicki, Commissioner
Ron Wesen, Commissioner*

Business Advisory Committee Report

September 23rd

Andrea Martin, Kim Ort, Anneliese Vance-Sherman, Jennifer Johnson, Mark Raaka, Lisa Janicki, Terry Belcoe, Don Wick, Linda Jones, Cheryl Bishop, John Sternlicht & David Jefferson

- Welcomes new EDASC Exec Director John Sternlicht
- Reviewed Data Carousel information to be included in the upcoming event
- Commissioner Janicki Extended Data Event invitation to all members
- Charter on hold until November
- October meeting cancelled



Skagit County Board of Health - Population Health Trust

"Always working for a safer and healthier Skagit County"

*Kenneth A. Dahlstedt, Chair
Lisa Janicki, Commissioner
Ron Wesen, Commissioner*

Steering Committee Report

September 16th

Bill Henkel, Debra Lancaster, Liz McNett Crowl, Connie Davis, Jennifer Johnson & David Jefferson (Staff: Leslie Geoff & Mel Pedrosa)

- * Complete Data Weighting with Members
- * Carousel Presentation at PHT
- * Data Carousel Invitation Updates
- * Start thinking about the transition from assessment to planning
- * Forces of change and shared outcomes across organizations
- * Suggest a January 2016 Retreat



Skagit County Board of Health - Population Health Trust

"Always working for a safer and healthier Skagit County"

*Kenneth A. Dahlstedt, Chair
Lisa Janicki, Commissioner
Ron Wesen, Commissioner*

Dr. Maureen Pettitt

Data Carousel Demonstration



Skagit County Board of Health - Population Health Trust

"Always working for a safer and healthier Skagit County"

*Kenneth A. Dahlstedt, Chair
Lisa Janicki, Commissioner
Ron Wesen, Commissioner*



15 Minutes



Skagit County Board of Health - Population Health Trust

"Always working for a safer and healthier Skagit County"

*Kenneth A. Dahlstedt, Chair
Lisa Janicki, Commissioner
Ron Wesen, Commissioner*

Data Carousel Preparation

Big Thanks to all our PHT members
for participating in the data
indicators weighting process

- Social and Physical Environment (35) + (9PHT)
- Health Care Access & Quality (22) + (11PHT)
- Health Behaviors (17) + (8PHT)
- Total $74 + 28 = 102$



Skagit County Board of Health - Population Health Trust

"Always working for a safer and healthier Skagit County"

*Kenneth A. Dahlstedt, Chair
Lisa Janicki, Commissioner
Ron Wesen, Commissioner*

Social and Physical Environment (35) + (9PHT)

30 Indicators plus QoL

- Safety
- Nutrition
- Natural Environment
- Housing
- Weight status



Skagit County Board of Health - Population Health Trust

"Always working for a safer and healthier Skagit County"

*Kenneth A. Dahlstedt, Chair
Lisa Janicki, Commissioner
Ron Wesen, Commissioner*

Health Care Access & Quality (22) + (11PHT)

34 Indicators plus QoL

- Provider rates (all substations)
- Health Care Coverage (maybe leave off and use as a general story for the group)
- Immunization & Screening
- Pregnancy and Birth
- Chronic and Non communicable disease
- Communicable disease



Skagit County Board of Health - Population Health Trust

"Always working for a safer and healthier Skagit County"

*Kenneth A. Dahlstedt, Chair
Lisa Janicki, Commissioner
Ron Wesen, Commissioner*

Health Behaviors (17) + (7PHT)

40 Indicators plus QoL

- Teen Safety
- Substance Use
- Mental Health
- Nutrition and Physical Activity
- Weight Status



Skagit County Board of Health - Population Health Trust

"Always working for a safer and healthier Skagit County"

*Kenneth A. Dahlstedt, Chair
Lisa Janicki, Commissioner
Ron Wesen, Commissioner*

Data Carousel Preparation

- What is pending?
- Community Forums



Skagit County Board of Health - Population Health Trust

"Always working for a safer and healthier Skagit County"

*Kenneth A. Dahlstedt, Chair
Lisa Janicki, Commissioner
Ron Wesen, Commissioner*



**Don McMoran
&
Diane Smith
WSU Extension**



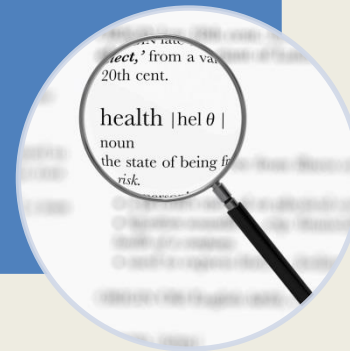
Skagit County Board of Health - Population Health Trust

"Always working for a safer and healthier Skagit County"

*Kenneth A. Dahlstedt, Chair
Lisa Janicki, Commissioner
Ron Wesen, Commissioner*

- Transition from Assessment to Planning
- January Retreat?
- New Members and Renewals

2016



Skagit County Board of Health - Population Health Trust

"Always working for a safer and healthier Skagit County"

*Kenneth A. Dahlstedt, Chair
Lisa Janicki, Commissioner
Ron Wesen, Commissioner*

Closing Remarks

- **Next meeting November 5TH**
- **Northwest Career & Technical Center**
- **Time: 9:00 to 12:00**



Skagit County Board of Health - Population Health Trust

"Always working for a safer and healthier Skagit County"

*Kenneth A. Dahlstedt, Chair
Lisa Janicki, Commissioner
Ron Wesen, Commissioner*



Skagit County

WASHINGTON STATE UNIVERSITY
EXTENSION

WASHINGTON STATE UNIVERSITY



SKAGIT COUNTY EXTENSION

Master Gardener Program



Sustainable Agriculture
Research & Education

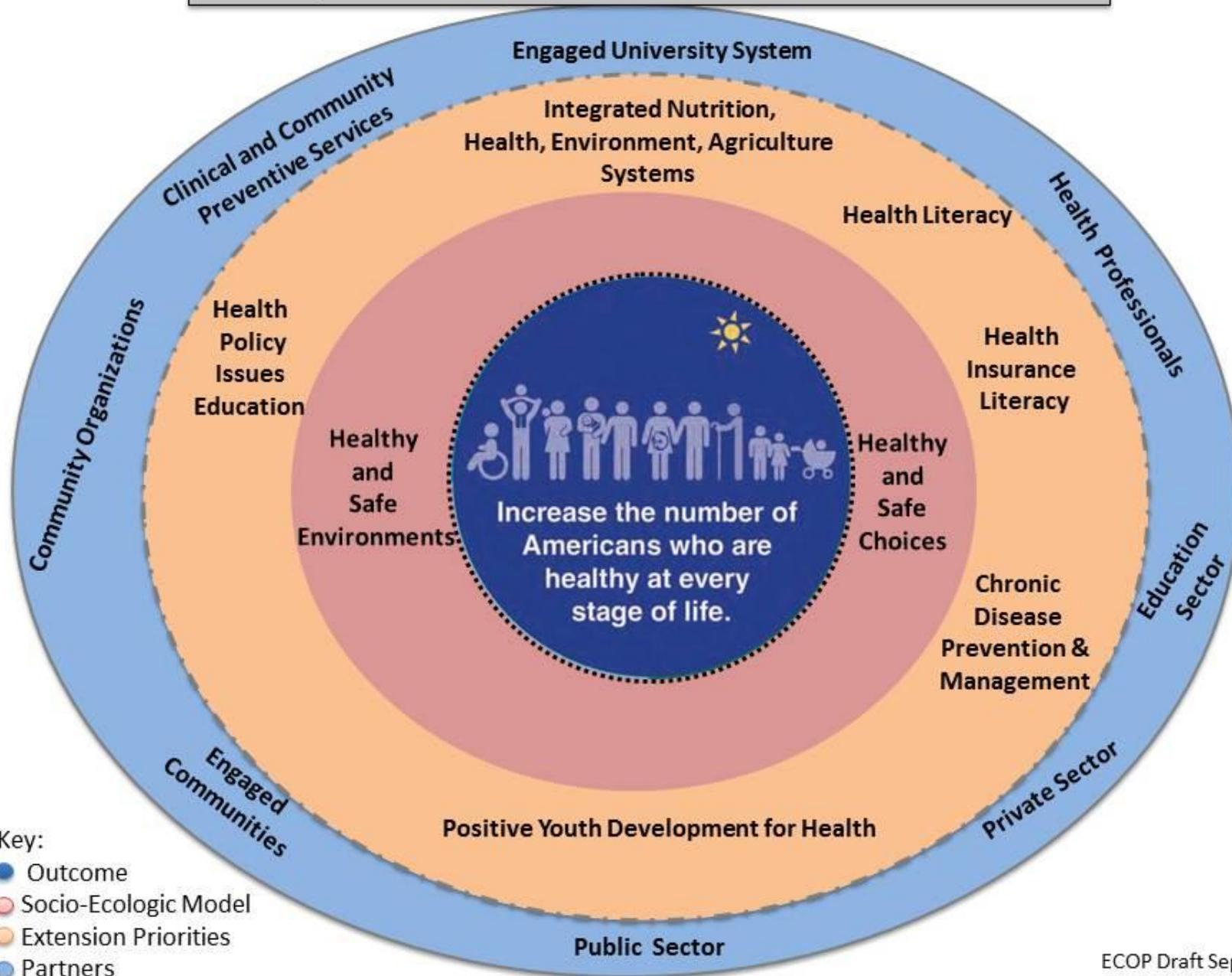


Skagit County Board of Health - Population Health Trust

"Always working for a safer and healthier Skagit County"

*Kenneth A. Dahlstedt, Chair
Lisa Janicki, Commissioner
Ron Wesen, Commissioner*

Cooperative Extension's National Framework for Health & Wellness



Farm Bill



WSU College of Medicine



Affordable Care Act



Skagit County Board of Health - Population Health Trust

"Always working for a safer and healthier Skagit County"

*Kenneth A. Dahlstedt, Chair
Lisa Janicki, Commissioner
Ron Wesen, Commissioner*

Social Determinates of Health

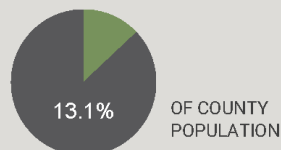
Access to Affordable Nutritious Food

Skagit County Washington	# of Households Receiving SNAP / % Living Below Poverty Line	% with Seniors	% with Children
	6,951 / 35.7%	26.0%	56.4%

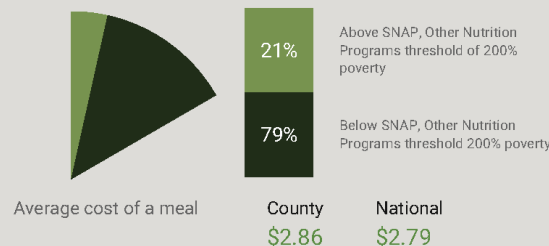
Skagit County, Washington

COUNTY FOOD INSECURITY RATE

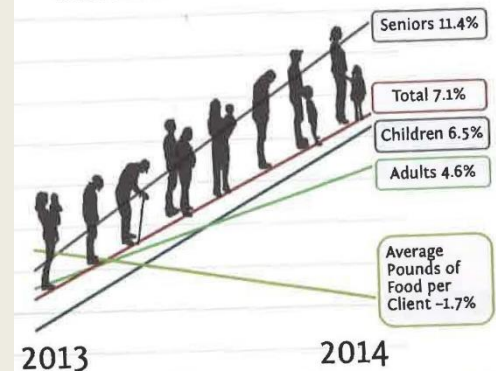
FOOD INSECURE PEOPLE:
15,450



ESTIMATED PROGRAM ELIGIBILITY AMONG FOOD INSECURE PEOPLE



Increase in Food Bank Visits



Skagit County Board of Health - Population Health Trust

"Always working for a safer and healthier Skagit County"

*Kenneth A. Dahlstedt, Chair
Lisa Janicki, Commissioner
Ron Wesen, Commissioner*

“The stuff that’s horrible for you, you know the Top Ramen, that’s the cheap stuff. They make that super easy to get. And I can’t blame somebody else for me being chubby, but when those things are the things that are the cheapest and the things you can afford at the time, then of course, those are the things you have to go after sometimes. It’s not that those are the things I want, it’s just that that’s the easy access. I’ve never understood why they don’t make the healthy stuff the cheaper stuff. It’s like they want us to be fat.”



Skagit Food for Skagit People Listening Sessions

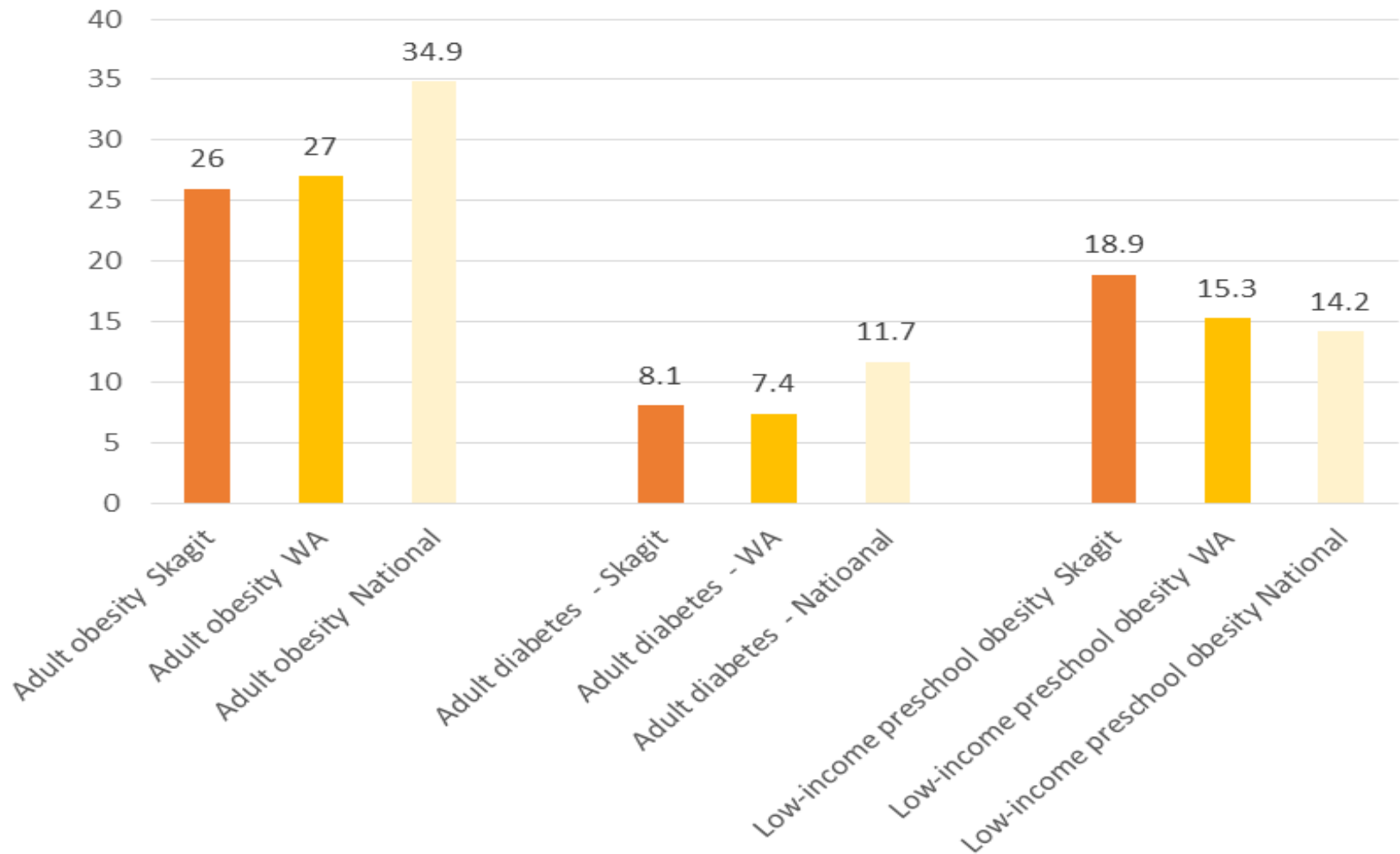


Skagit County Board of Health - Population Health Trust

“Always working for a safer and healthier Skagit County”

*Kenneth A. Dahlstedt, Chair
Lisa Janicki, Commissioner
Ron Wesen, Commissioner*

Health Indicators Associated with Food Access

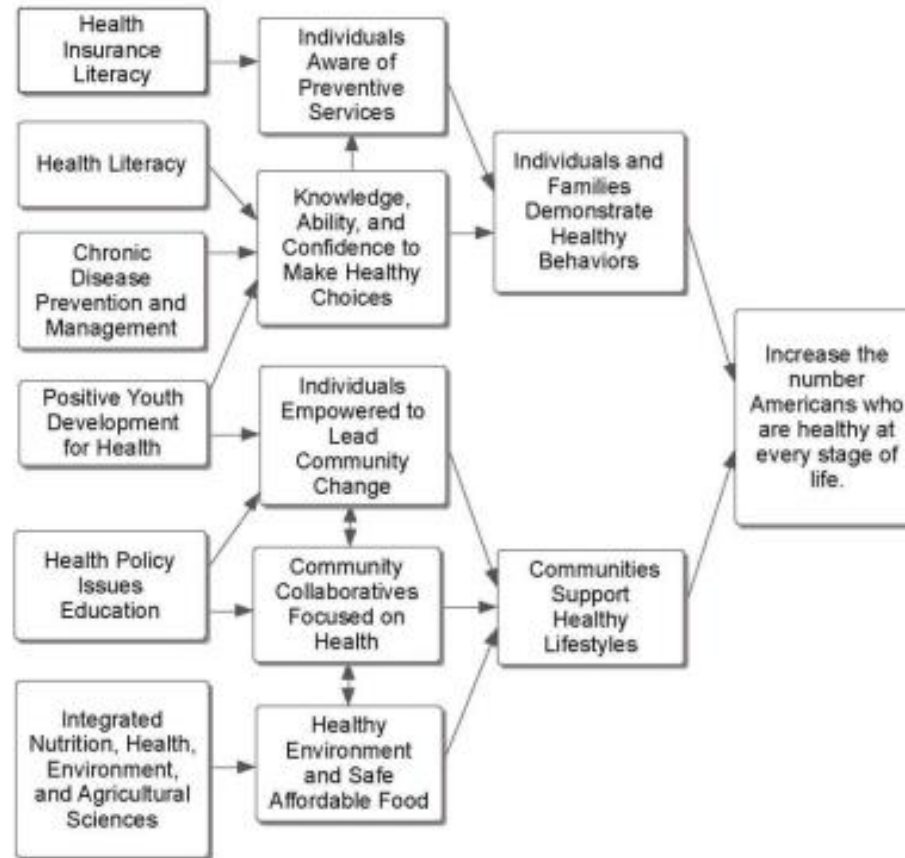


Skagit County Board of Health - Population Health Trust

"Always working for a safer and healthier Skagit County"

*Kenneth A. Dahlstedt, Chair
Lisa Janicki, Commissioner
Ron Wesen, Commissioner*

Master Logic Model for Health and Wellness in Cooperative Extension



Skagit County Board of Health - Population Health Trust

"Always working for a safer and healthier Skagit County"

*Kenneth A. Dahlstedt, Chair
Lisa Janicki, Commissioner
Ron Wesen, Commissioner*

WSU Skagit Health Priorities

- ***Positive Youth Development for Health – YA4H, Food \$ense, After School Cooking Classes***
- ***Chronic Disease Prevention – CDC Diabetes Prevention, WSU Medical Center***
- ***Integrate Nutrition , Health, Environment and Agriculture – Food Systems, Cultivating Success***



Skagit County Board of Health - Population Health Trust

"Always working for a safer and healthier Skagit County"

*Kenneth A. Dahlstedt, Chair
Lisa Janicki, Commissioner
Ron Wesen, Commissioner*

Traveling along on the Freeway of life in Skagit County



69% employed

43% "Working Well"

- Employed
- College education
- Medical insurance
- Earn 50k+/year



Source: SVH 9/30/2015 Skagit Valley Population Health Trust Survey



Skagit County Board of Health - Population Health Trust

"Always working for a safer and healthier Skagit County"

*Kenneth A. Dahlstedt, Chair
Lisa Janicki, Commissioner
Ron Wesen, Commissioner*

WSU Options



Skagit County Board of Health - Population Health Trust

"Always working for a safer and healthier Skagit County"

*Kenneth A. Dahlstedt, Chair
Lisa Janicki, Commissioner
Ron Wesen, Commissioner*

Food is foundational to good health, Growing of food is essential to building community sustainability and resiliency



Skagit County Board of Health - Population Health Trust

"Always working for a safer and healthier Skagit County"

*Kenneth A. Dahlstedt, Chair
Lisa Janicki, Commissioner
Ron Wesen, Commissioner*

What is Public Health's role Food Access/Food Systems?

Is it time for a Food Policy Council/Food Plan in Skagit County?



Skagit County Board of Health - Population Health Trust

"Always working for a safer and healthier Skagit County"

*Kenneth A. Dahlstedt, Chair
Lisa Janicki, Commissioner
Ron Wesen, Commissioner*

WASHINGTON STATE UNIVERSITY



SKAGIT COUNTY EXTENSION

Don McMoran

County Extension Director
WSU Skagit County Extension

(360) 428-4270, ext 225
dmcmoran@wsu.edu

Diane Smith

Regional Specialist - Food Access,
Nutrition and Health Promotion

(360) 428-4270, ext 235
diane.smith@wsu.edu



Skagit County Board of Health - Population Health Trust

"Always working for a safer and healthier Skagit County"

*Kenneth A. Dahlstedt, Chair
Lisa Janicki, Commissioner
Ron Wesen, Commissioner*