

Population Health Trust Advisory Committee Meeting

Skagit County Board of Health
January 7th, 2016



Skagit County Board of Health - Population Health Trust

"Always working for a safer and healthier Skagit County"

Lisa Janicki, Chair
Kenneth A. Dahlstedt, Commissioner
Ron Wesen, Commissioner

Agenda

- Welcome, Introductions and Notes
- Community Forum Debriefing
- Format for Final Assessment Report
- 2015 and 2016 Budget
- Year in Review
- Forming Data Indicator Group
- Forming Policy Committee
- Location & retreat date
- Recognitions
- Closing remarks and next steps



Skagit County Board of Health - Population Health Trust

"Always working for a safer and healthier Skagit County"

*Lisa Janicki, Chair
Kenneth A. Dahlstedt, Commissioner
Ron Wesen, Commissioner*

Community Forums

- Thank you to all Trust members
- 5 forums to date, SCCFC, Anacortes, Sedro-Woolley, East County and Mount Vernon
- About 190 participants
- Pending Forum: Mayors, City Councils and Planners on March 9th



Skagit County Board of Health - Population Health Trust

"Always working for a safer and healthier Skagit County"

*Lisa Janicki, Chair
Kenneth A. Dahlstedt, Commissioner
Ron Wesen, Commissioner*



Does this fit with your perception?

Items you want to make sure we consider?

What stands out as most pressing?

Shall we move forward?



Skagit County Board of Health - Population Health Trust

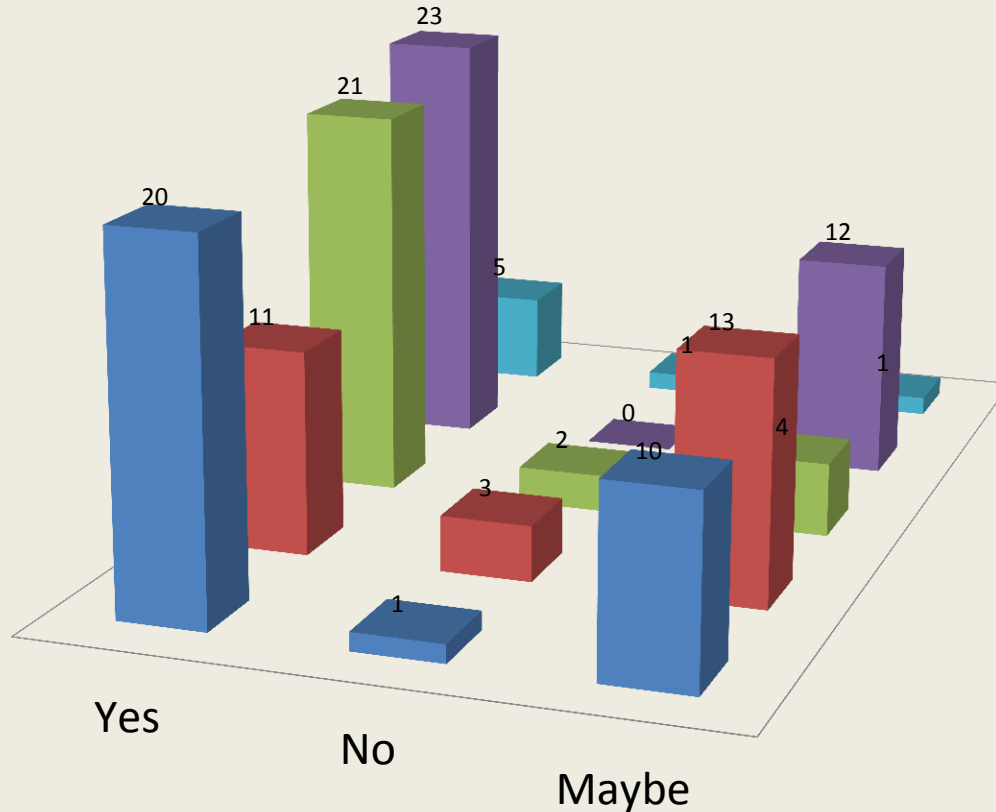
"Always working for a safer and healthier Skagit County"

*Lisa Janicki, Chair
Kenneth A. Dahlstedt, Commissioner
Ron Wesen, Commissioner*

Thorough Assessment?

■ SCCFC ■ Anacortes ■ Woolley ■ Mt Vernon ■ East County

Yes=80
No=7
Maybe=40

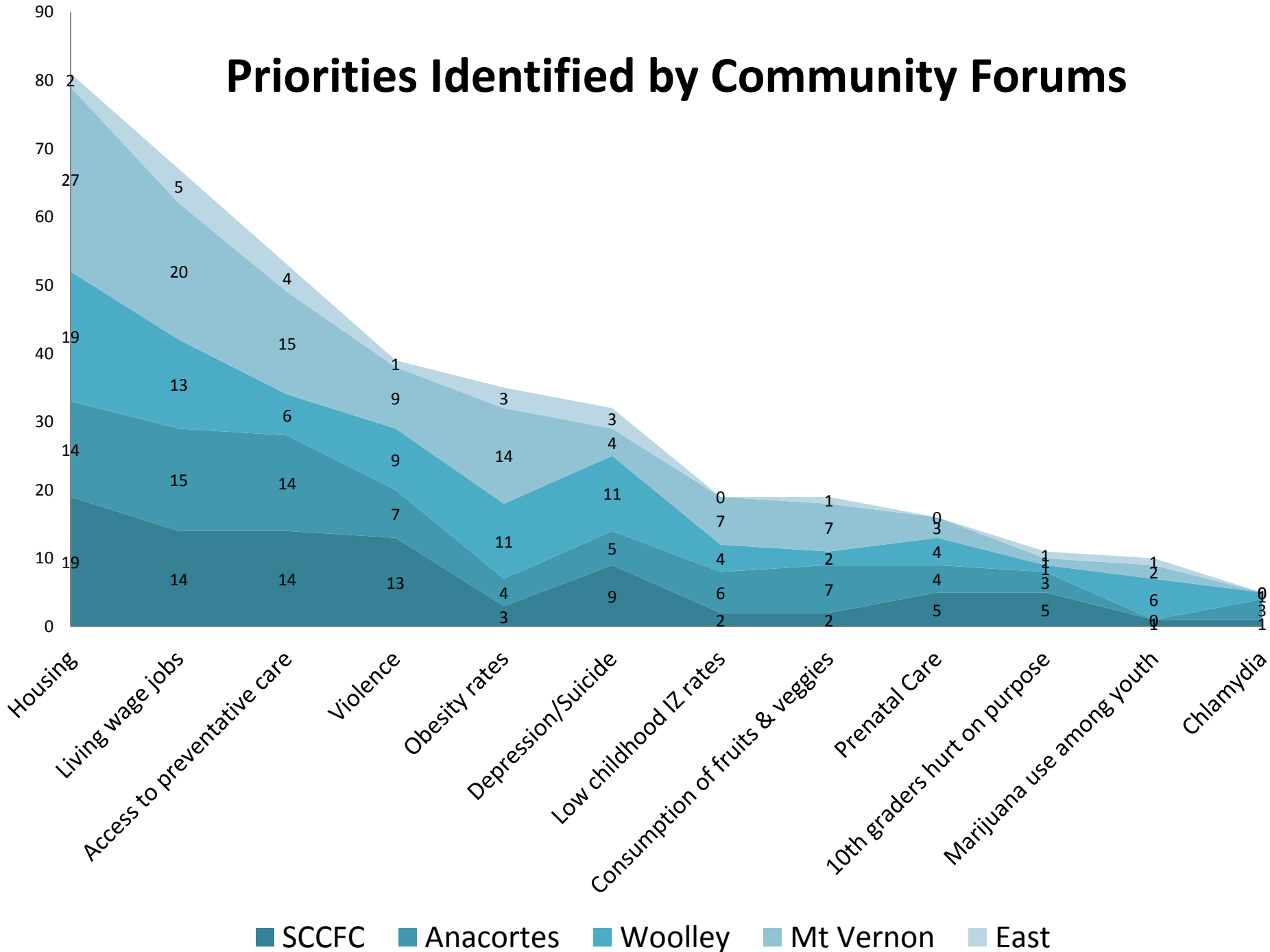


Skagit County Board of Health - Population Health Trust

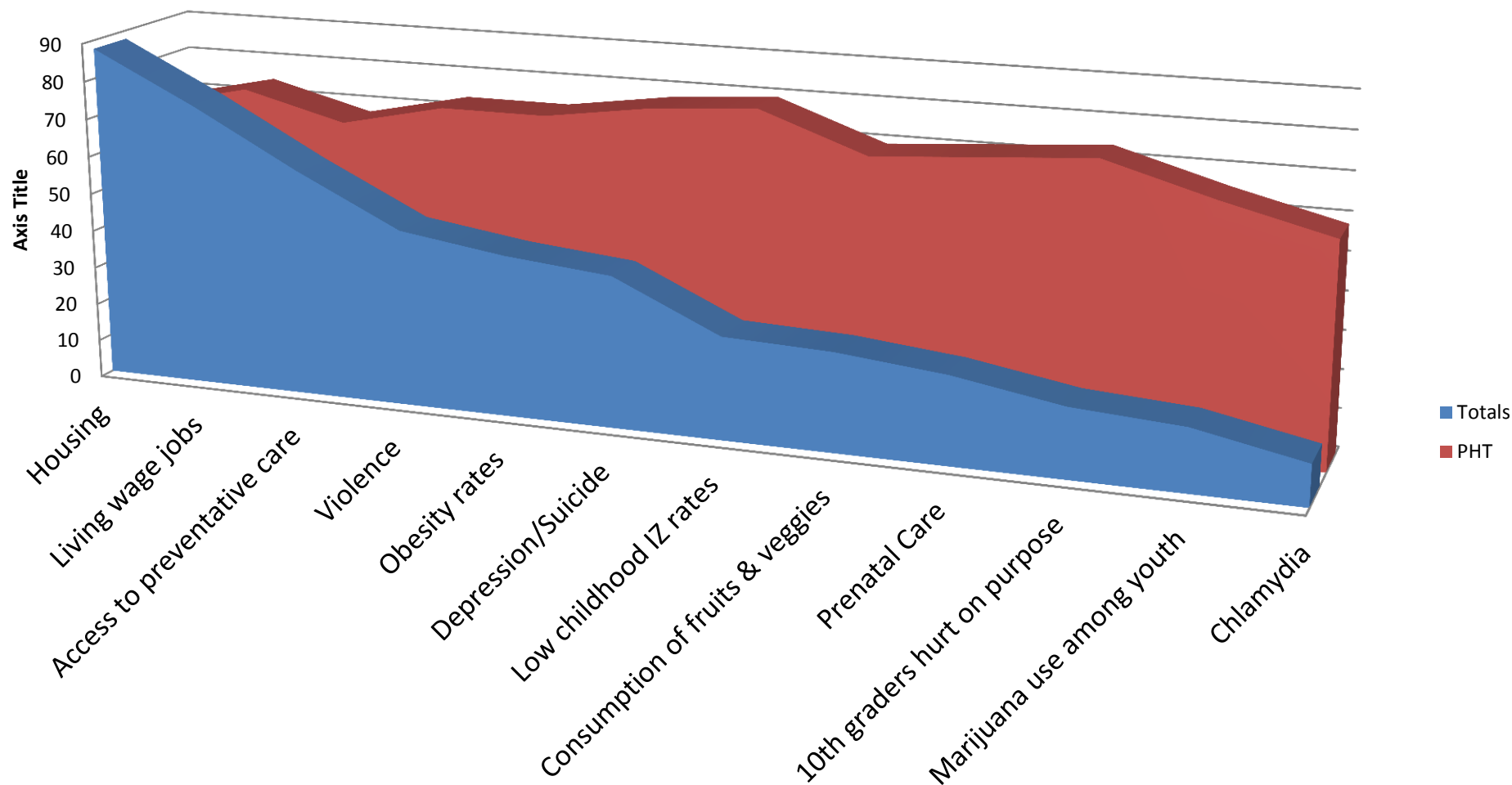
"Always working for a safer and healthier Skagit County"

*Lisa Janicki, Chair
Kenneth A. Dahlstedt, Commissioner
Ron Wesen, Commissioner*

Priorities Identified by Community Forums



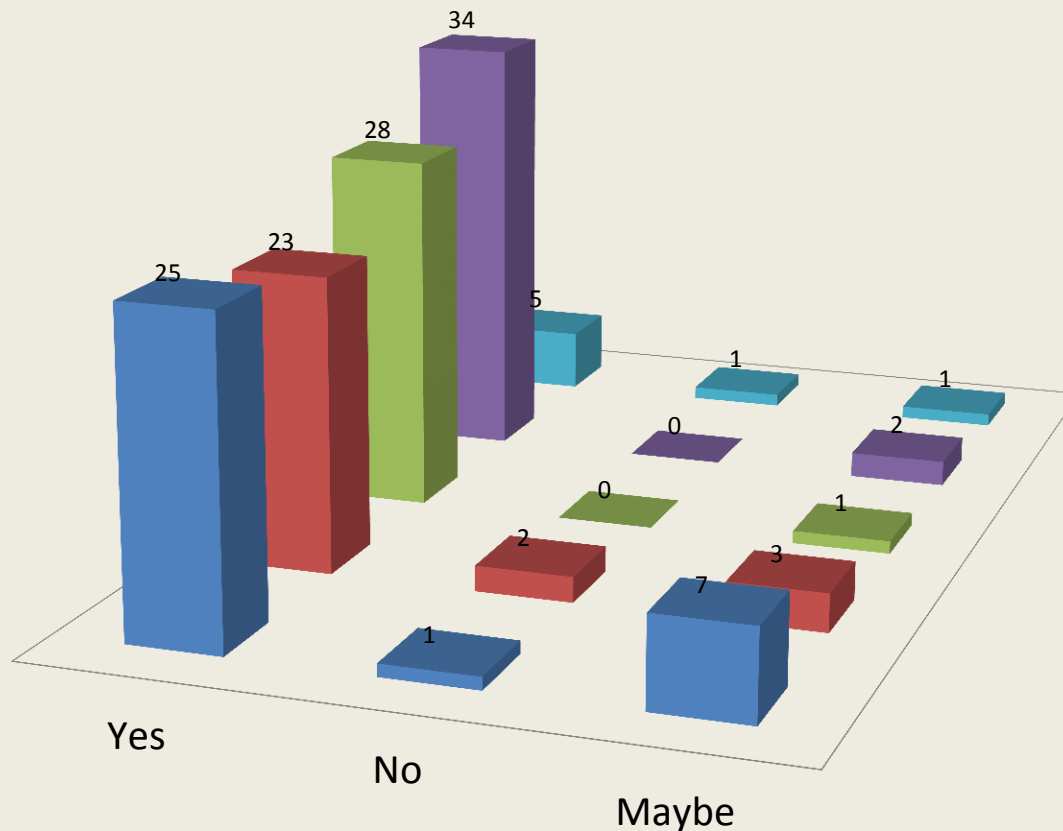
Community Forum Priorities Compared to PHT Priorities



Shall We Proceed?

■ SCCFC ■ Anacortes ■ Woolley ■ Mt Vernon ■ East County

Yes=115
No=4
Maybe=14

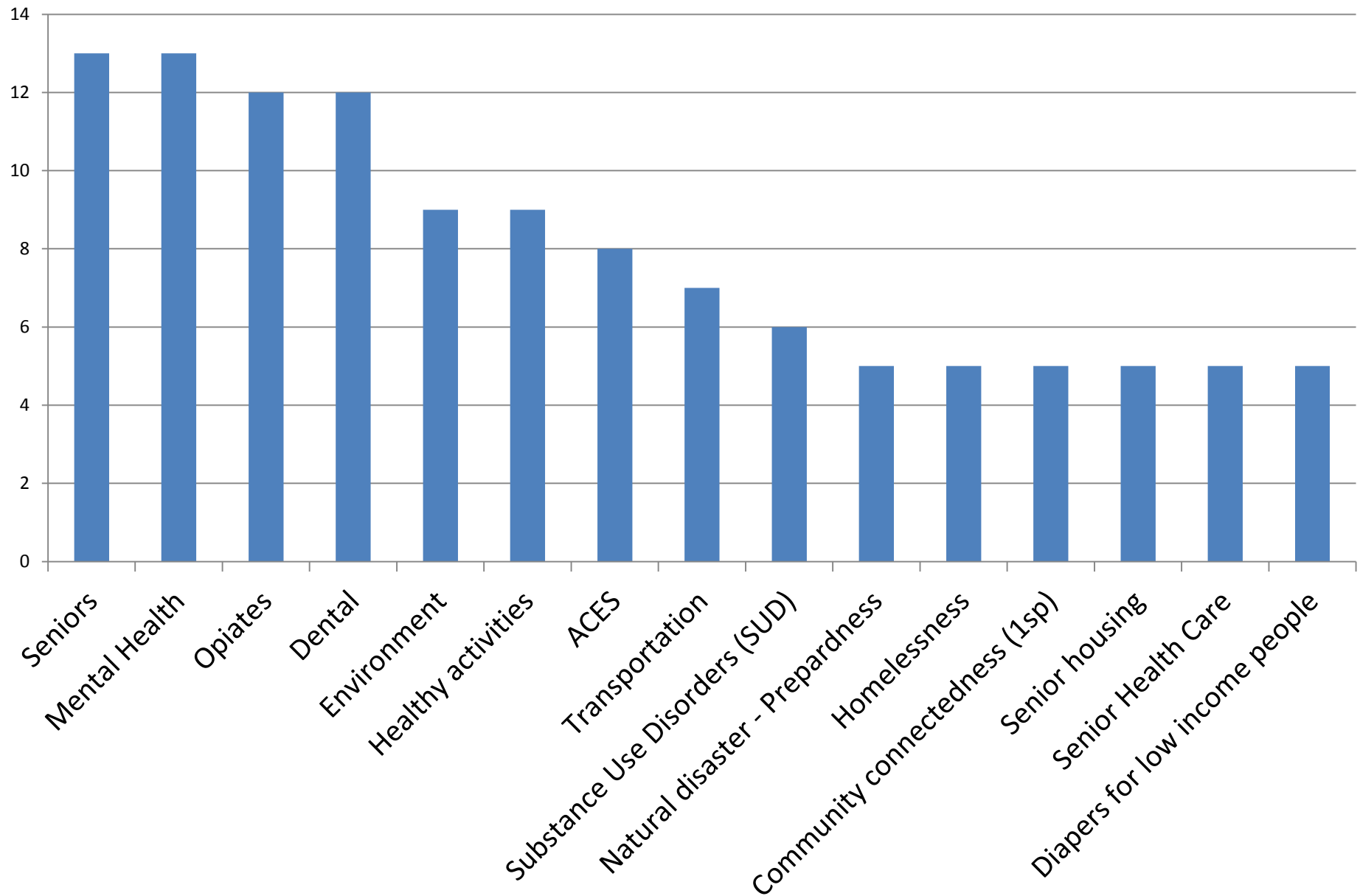


Skagit County Board of Health - Population Health Trust

"Always working for a safer and healthier Skagit County"

*Lisa Janicki, Chair
Kenneth A. Dahlstedt, Commissioner
Ron Wesen, Commissioner*

What more should be considered?



Questions

More assessment?

Focus?

Suggestions?



Skagit County Board of Health - Population Health Trust

"Always working for a safer and healthier Skagit County"

*Lisa Janicki, Chair
Kenneth A. Dahlstedt, Commissioner
Ron Wesen, Commissioner*

Final Report Draft Format

About 15 pages with links to appendices

Historic narrative (Forming the Trust and Conducting an Assessment)

Description of the 2015 Assessment Process

Highlights from looking at data

A. Demographic summary (1 page)

B. Quality of Life Survey (2 pages)

C. Data Carousel (4 pages)

D. Forces of Change (1 page)

E. Community Listening Sessions (1 page)

Conclusions

A. Strengths (1 page)

B. Opportunities for improvement (1 page)

Next steps (half-page, this information will be used to inform ongoing plans for improving health of Skagit county's people - 1 page)



Skagit County Board of Health - Population Health Trust

"Always working for a safer and healthier Skagit County"

*Lisa Janicki, Chair
Kenneth A. Dahlstedt, Commissioner
Ron Wesen, Commissioner*



15 Minutes



Skagit County Board of Health - Population Health Trust

"Always working for a safer and healthier Skagit County"

*Lisa Janicki, Chair
Kenneth A. Dahlstedt, Commissioner
Ron Wesen, Commissioner*



Skagit County Board of Health - Population Health Trust

"Always working for a safer and healthier Skagit County"

*Lisa Janicki, Chair
Kenneth A. Dahlstedt, Commissioner
Ron Wesen, Commissioner*

Population Health Trust 2016 Budget

2016 Projected Budget

Data Indicator Web services from Eastern Washington University to display live and current data to the public. (One time set up cost)	\$ 75,000
Insightvision Collective Impact Web based Database	\$ 23,000
February Retreat (presenter, venue, logistics)	\$ 6,000
Yearly meeting cost	\$ 4,800
Production of a 7 minute Public Announcement about purpose of Trust	\$ 7,000
Planning contractor services (strategic planning, consultation, research)	\$ 42,000
Sub Total	\$ 157,800
Contingency Budget 10%	15,780
Total funds needed for 2016	\$ 173,580
Skagit Regional Health Pledge	(30,000)
Skagit County Pledge	(50,000)
Total	\$ 93,580



Skagit County Board of Health - Population Health Trust

"Always working for a safer and healthier Skagit County"

*Lisa Janicki, Chair
Kenneth A. Dahlstedt, Commissioner
Ron Wesen, Commissioner*

2016
1E

Year in Review

Community Health Assessment and Planning Checklist

Assess Needs and Resources

Understand current community strengths, resources, needs, and gaps to help you decide where to focus your efforts



Clarifying the overall purpose the data will serve is to be able to top priority issues that the community wants to focus on (wasn't if this is what it was supposed to say)

Members help identify questions and data that are critical to be

Include data on the underlying factors that shape health and the in how health is experienced in our community.

Determine how you will gather input from the community at large regarding health issues and community assets. (Surveys, forums groups, key informants, and information from racial or other underrepresented groups)

Making use of data workgroups

Use a core set of indicator data to review the health of the community

Community Health Assessment and Planning Checklist

Work Together-Collaborate with Stakeholders and Community

Build and maintain a diverse team of partners throughout the process to ensure it is a community-owned process

	Yes	No	Pending
Recruit diverse stakeholders from multiple sectors			
Manage board member boundaries to create safety: "...for diverse stakeholders to effectively cross boundaries and work together, partners must first define and understand the lines that differentiate them. You must be able to clearly see group boundaries before you can span them."			
Build relationships among members			
Build a common knowledge base (i.e., community planning, collective impact, equality, glossary of terms)			
Run effective meetings			
Convene members to develop the group's vision, values and mission statements			
Decide on an organizational structure (values and operating procedures)			



Skagit County Board of Health - Population Health Trust

"Always working for a safer and healthier Skagit County"

*Lisa Janicki, Chair
Kenneth A. Dahlstedt, Commissioner
Ron Wesen, Commissioner*

Year in Review

How well did we meet our objectives?



What should we take forward in 2016?



Skagit County Board of Health - Population Health Trust

"Always working for a safer and healthier Skagit County"

*Lisa Janicki, Chair
Kenneth A. Dahlstedt, Commissioner
Ron Wesen, Commissioner*

coming soon



Skagit County Board of Health - Population Health Trust

"Always working for a safer and healthier Skagit County"

*Lisa Janicki, Chair
Kenneth A. Dahlstedt, Commissioner
Ron Wesen, Commissioner*

Thank You Nomination Committee

- Margaret Rojas
- Connie Davis
- Carol Hawk
- Charlie Wend
- Jennifer Johnson
- Bill Henkel
- Andrea Doll



Skagit County Board of Health - Population Health Trust

"Always working for a safer and healthier Skagit County"

*Lisa Janicki, Chair
Kenneth A. Dahlstedt, Commissioner
Ron Wesen, Commissioner*

New Nominations (21 votes)

Scott	Hale	Symmetry Healthcare Management
Kevin	Murphy	Skagit Council of Governments
Marlyin	Scott	Upper Skagit Indian Tribe*
Mary Ellen	Lykins	Skagit/Islands Head Start & ECEAP
Phil	Brockman	Sedro-Wolley School District
John	Sternlicht	EDASC



Skagit County Board of Health - Population Health Trust

"Always working for a safer and healthier Skagit County"

*Lisa Janicki, Chair
Kenneth A. Dahlstedt, Commissioner
Ron Wesen, Commissioner*

Nomination Update

- All year one candidates would like to continue
- On Jan 26th, Board of Health approves new members and re-appoints 1 year members
- Question: *Are you still in?*



Skagit County Board of Health - Population Health Trust

"Always working for a safer and healthier Skagit County"

*Lisa Janicki, Chair
Kenneth A. Dahlstedt, Commissioner
Ron Wesen, Commissioner*

Forming a Web Site Data Indicator Ad-Hoc Committee



Skagit County Board of Health - Population Health Trust

"Always working for a safer and healthier Skagit County"

*Lisa Janicki, Chair
Kenneth A. Dahlstedt, Commissioner
Ron Wesen, Commissioner*

Forming a Policy Advisory Committee



Skagit County Board of Health - Population Health Trust

"Always working for a safer and healthier Skagit County"

*Lisa Janicki, Chair
Kenneth A. Dahlstedt, Commissioner
Ron Wesen, Commissioner*

Business Items

- **Location change?**
- **Retreat date (March 30th) and planning**



Skagit County Board of Health - Population Health Trust

"Always working for a safer and healthier Skagit County"

*Lisa Janicki, Chair
Kenneth A. Dahlstedt, Commissioner
Ron Wesen, Commissioner*



Skagit County Board of Health - Population Health Trust

"Always working for a safer and healthier Skagit County"

*Lisa Janicki, Chair
Kenneth A. Dahlstedt, Commissioner
Ron Wesen, Commissioner*

Wrap up

- Closing remarks
- Next meeting February 4th
- Northwest Career & Technical Center
- Time: 9:00 to 12:00



Skagit County Board of Health - Population Health Trust

"Always working for a safer and healthier Skagit County"

*Lisa Janicki, Chair
Kenneth A. Dahlstedt, Commissioner
Ron Wesen, Commissioner*