

Historic Preservation for Washington State

24 CFR Part 58

| General requirements | Legislation | Regulation |
|---|---|--|
| Protect sites, buildings, and objects with national, state or local historic, cultural and/or archeological significance. Identify effects of project on properties | National Historic Preservation Act, 16 U.S.C. 470(f), section 106 | 36 CFR Part 800 24 CFR Part 58.5(a) |

1. Does the project include new construction; demolition; the acquisition of undeveloped land; or any activity that requires ground disturbance (defined as one cubic foot of disturbed soil)?

- No: PROCEED to #2.
 Yes: PROCEED to #3

2. Does the project include repair, rehabilitation or conversion of existing properties; involve a structure that is MORE than 45 years old, is not in a historic district and has no ground disturbing activities?

- No: STOP here. The Section 106 Historic Preservation review is complete.
 Record your determination that there is no potential to cause effect, including the age of the existing building and information from the National Register to show that the activity is not in a historic district, on the Statutory Worksheet or Environmental Assessment.
 Yes: PROCEED to #3

3. Consult with SHPO or THPO and any tribes or groups that may have an interest in the project to determine if the project is eligible for the National Historic Register.

- You must define and consider the Area of Potential Effect (APE). The APE is the geographic area within which an undertaking may directly or indirectly cause changes in the character or use of historic properties. The APE is influenced by the scale and nature of an undertaking. (36 CFR Part 800.16).
- Determine if there are tribes or groups that have an interest in the historic aspects of the project and invite them to participate in the consultation. For ground disturbing activities, you must make a reasonable and good faith effort to identify Indian tribes that may have an interest. HUD’s website lists interested tribes by county: <https://egis.hud.gov/tadat/> It is suggested that you go to the Tribal website or contact the SHPO to make sure contact information is current.
- Consult the State Historic Preservation Officer (SHPO), or if the project is on certain tribal lands, the Tribal Historic Preservation Officer (THPO), with details of the project and project site and your determination if it is eligible for the National Historic Register. SHPO or THPO has 30 days from receipt of a well-documented request of review of your determination. We recommend sending the letter with a return receipt form to document the contact. If they do not respond within the timeframe, or provide a description of additional information needed, you may proceed with the next step of the process based on your finding or consult with the Advisory Council on Historic Preservation (ACHP).

State Historic Preservation Officer contacts: <http://www.nps.gov/nr/shpolist.htm>
 Tribal Historic Preservation Officers contacts: <http://www.nathpo.org/map.html>

Proceed as appropriate based on the Finding:

- No Historic Properties Affected:** STOP here. The Section 106 Historic Preservation review is complete. Attach SHPO/THPO concurrence, copies of letters to and from other interested parties and the tribes, and your response to the ERR. If SHPO/THPO did not respond within 30 days, your dated letter documents compliance. Record your determination of no historic properties affected on the Statutory Worksheet or Environmental Assessment.

- No Adverse Effect on Historic Property:** STOP here. The Section 106 Historic Preservation review is complete. **Categorically Excluded projects (24 CFR Part 58.35(a)) CANNOT convert to exempt with this determination.**

Attach SHPO/THPO concurrence, copies of letters to and from other interested parties and the tribes, and your response to the ERR. Record your determination of no adverse affect on historic properties on the Statutory Worksheet or Environmental Assessment.

- Adverse Effect on Historic Property** Resolve Adverse Effects per 800.6 in consultation with SHPO/THPO, the ACHP if participating, and any consulting parties. The loan or grant may not be approved until adverse effects are resolved according to 800.6 or you have complied with 36 CFR Part 800. **Categorically Excluded projects (24 CFR Part 58.35(a)) CANNOT convert to exempt with this determination.**

Make sure that the resolution is fully documented in your ERR with all SHPO/THPO correspondence, copies of letters to and from other interested parties and the tribes, surveys, MOAs etc.

Historic Preservation for Washington State

24 CFR Part 58

| General requirements | Legislation | Regulation |
|--|---|--|
| Protect sites, buildings, and objects with national, state or local historic, cultural and/or archeological significance. Identify effects of project on properties. | National Historic Preservation Act, 16 U.S.C. 470(f), section 106 | 36 CFR Part 800 24 CFR Part 58.5(a) |

Per 36 CFR 800.4 and 36 CFR 800.5, the lead federal agency must consult with the Washington State Historic Preservation Officer (SHPO) and Department of Archaeology and Historic Preservation (DAHP) for each step of the Section 106 process. The U.S. Department of Housing and Urban Development has legally delegated their authority to you, and therefore, you must consult with DAHP. Consultation with DAHP consists of letterhead-to-letterhead exchange of each step, which are as follows:

- Step 1: Initiate consultation by defining the undertaking. Please provide documentation of your legal delegation from HUD to consult with SHPO and DAHP at this time.
- Step 2: Definition of the Area of Potential Effects (APE)
- Step 3: Survey and Methodology
- Step 4: Determination of Eligibility
- Step 5: Assessment of Adverse Effects
- Step 6: Resolution of Adverse Effects

Steps may be consolidated into fewer consultations, but SHPO and DAHP must be afforded an opportunity to consult on each step. DAHP has consolidated Section 106 consultation into three forms.*

1. EZ-1 for ground disturbing activities: a fillable PDF. Download, complete, and send to 106@dahp.wa.gov. May be used to initiate consultation and describe the Undertaking (Step 1), and to define the APE (Step 2).

2. EZ-2 for built environment resources (buildings, structures, sites, objects, districts). Entered directly into WISAARD <https://dahp.wa.gov/project-review/wisaard-system>. May be used to offer a determination of eligibility (Step 4). Depending on the scope of the undertaking, or if cultural resource professionals are already being retained for the undertaking, Historic Property Inventory forms may be requested, in order to ensure the level of identification efforts is commensurate with the undertaking.
3. EZ-3 for resources that have been determined eligible for listing in the National Register of Historic Places or are currently listed in the National Register. A fillable PDF. Download, complete, and send to 106@dahp.wa.gov. May be used only after Step 4 to determine effects on eligible or listed properties.

Please visit their website for more information:

- Section 106: <https://dahp.wa.gov/section106>.
- EZ forms: <https://dahp.wa.gov/project-review/ez-forms>.

Tribal consultation is a separate responsibility from consultation with DAHP. You must determine if there are tribes or groups that have an interest in the historic aspects of the project and invite them to participate in the consultation. HUD's website lists interested tribes by county: <https://egis.hud.gov/tdat/>. It is suggested that you go to the Tribal website, or you may contact DAHP, to inquire about up to date contact information, but DAHP cannot consult with Tribes on your behalf.

*As of 2019, DAHP is rolling out new EZ forms. Please visit their website for any updates.



SKAGIT COUNTY ADMINISTRATIVE SERVICES

TIM HOLLORAN, COUNTY ADMINISTRATOR

May 23, 2019

Jennifer Washington, Tribal Chairperson
Upper Skagit Indian Tribe
25944 Community Plaza Way
Sedro Woolley, WA 98284

Re: Home Trust of Skagit Channel Cove Housing Project, Park Street in La Conner, WA
Department of Housing and Urban Development HOME Investment Partnerships Program

Dear Tribal Chairperson Washington:

Skagit County is considering funding the project listed above with federal funds from the U.S. Department of Housing and Urban Development (HUD). Under HUD regulation 24 CFR 58.4, Skagit County has assumed HUD's environmental review responsibilities for the project, including tribal consultation related to historic properties. Historic properties include archeological sites, burial grounds, sacred landscapes or features, ceremonial areas, traditional cultural places and landscapes, plant and animal communities, and buildings and structures with significant tribal association.

Skagit County will conduct a review of this project to comply with Section 106 of the National Historic Preservation Act and its implementing regulations 36 CFR Part 800. We would like to invite you to be a consulting party in this review to help identify historic properties in the project area that may have religious and cultural significance to your tribe, and if such properties exist, to help assess how the project might affect them. If the project might have an adverse effect, we would like to discuss possible ways to avoid, minimize or mitigate potential adverse effects.

To meet project timeframes, if you would like to be a consulting party on this project, can you please let us know of your interest within 30 days? If you have any initial concerns with impacts of the project on religious or cultural properties, can you please note them in your response?

Enclosed is a map that shows the project. The proposed project is the new construction of five affordable homes at Channel Cove in La Conner, WA. Three homes will be approximately 1300 square feet and 2 will be approximately 1000 square feet. The property is located in Skagit County, east of the Swinomish Channel, at the end of Park Street, between Park and Fourth. The footprint of the project will be approximately 15,000 square feet. Channel Cove is a planned residential community with high-density housing, lawn, trees, parking areas, and

playgrounds. The site is surrounded by lower density, single-family homes, fields, and wetlands. Home Trust of Skagit (HTS) owns the land and 18 rental homes on the property. There are also nine owner-occupied homes on land leased from Home Trust Skagit, for a total of 27 homes currently on the site. All utilities and neighborhood infrastructure are in place. The five affordable homes to be constructed by HTS as part of this project is the completion of the Southfield Planned Unit Residential Development, which was approved in 1997.

In Skagit County, there is a need for affordable housing. Potential beneficiaries are households with incomes at or below 80 percent of the Area Median Income (AMI), adjusted for family size. Skagit County has tentatively awarded \$63,746.45 in HOME Community Housing Development Organization (CHDO) development funds to HTS for this project. The NEPA review is estimated to be complete by October 2109. If approved, HTS projects that the Channel Cove project will be complete 7 months later, by May 2020.

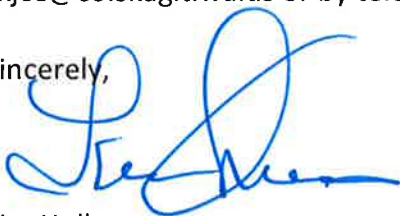
The NEPA and SEPA from the 1997 Southfield PURD review reference letters from WA Department of Community, Trade and Economic Development Office of Archaeology and Historic Preservation in 1993 and 1996 which state the project would have no effect on evidence of historic, archaeological, scientific, or cultural importance known to be on or next to the site. More information on the Section 106 review process is available at <http://www.onecpd.info/environmental-review/historic-preservation/>.

HUD's process for tribal consultation under Section 106 is described in a Notice available at <https://www.onecpd.info/resource/2448/notice-cpd-12-006-tribal-consultation-under-24-cfr-part-58>.

If you do not wish to consult on this project, can you please inform us? If you do wish to consult, can you please include in your reply the name and contact information for the tribe's principal representative in the consultation? Thank you very much. We value your assistance and look forward to consulting further if there are historic properties of religious and cultural significance to your tribe that may be affected by this project.

If you have any questions, please feel free to contact Shelley Kjos by email at skjos@co.skagit.wa.us or by telephone at (360) 416-1513.

Sincerely,



Tim Holloran
County Administrator

Cc: Shelley Kjos, Housing Resource Coordinator, Skagit County Public Health
Enclosure: Location Map



SKAGIT COUNTY ADMINISTRATIVE SERVICES

TIM HOLLORAN, COUNTY ADMINISTRATOR

May 23, 2019

Josephine Peters, Tribal Historic Preservation Officer
Swinomish Indian Tribal Community
11430 Moorage Way
La Conner, WA 98257

Re: Home Trust of Skagit Channel Cove Housing Project, Park Street in La Conner, WA
Department of Housing and Urban Development HOME Investment Partnerships Program

Dear Ms. Peters:

Skagit County is considering funding the project listed above with federal funds from the U.S. Department of Housing and Urban Development (HUD). Under HUD regulation 24 CFR 58.4, Skagit County has assumed HUD's environmental review responsibilities for the project, including tribal consultation related to historic properties. Historic properties include archeological sites, burial grounds, sacred landscapes or features, ceremonial areas, traditional cultural places and landscapes, plant and animal communities, and buildings and structures with significant tribal association.

Skagit County will conduct a review of this project to comply with Section 106 of the National Historic Preservation Act and its implementing regulations 36 CFR Part 800. We would like to invite you to be a consulting party in this review to help identify historic properties in the project area that may have religious and cultural significance to your tribe, and if such properties exist, to help assess how the project might affect them. If the project might have an adverse effect, we would like to discuss possible ways to avoid, minimize or mitigate potential adverse effects.

To meet project timeframes, if you would like to be a consulting party on this project, can you please let us know of your interest within 30 days? If you have any initial concerns with impacts of the project on religious or cultural properties, can you please note them in your response?

Enclosed is a map that shows the project. The proposed project is the new construction of five affordable homes at Channel Cove in La Conner, WA. Three homes will be approximately 1300 square feet and 2 will be approximately 1000 square feet. The property is located in Skagit County, east of the Swinomish Channel, at the end of Park Street, between Park and Fourth. The footprint of the project will be approximately 15,000 square feet. Channel Cove is a planned residential community with high-density housing, lawn, trees, parking areas, and

playgrounds. The site is surrounded by lower density, single-family homes, fields, and wetlands. Home Trust of Skagit (HTS) owns the land and 18 rental homes on the property. There are also nine owner-occupied homes on land leased from Home Trust Skagit, for a total of 27 homes currently on the site. All utilities and neighborhood infrastructure are in place. The five affordable homes to be constructed by HTS as part of this project is the completion of the Southfield Planned Unit Residential Development, which was approved in 1997.

In Skagit County, there is a need for affordable housing. Potential beneficiaries are households with incomes at or below 80 percent of the Area Median Income (AMI), adjusted for family size. Skagit County has tentatively awarded \$63,746.45 in HOME Community Housing Development Organization (CHDO) development funds to HTS for this project. The NEPA review is estimated to be complete by October 2109. If approved, HTS projects that the Channel Cove project will be complete 7 months later, by May 2020.

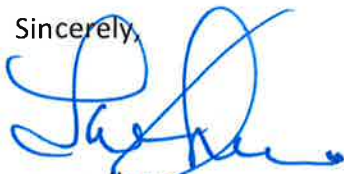
The NEPA and SEPA from the 1997 Southfield PURD review reference letters from WA Department of Community, Trade and Economic Development Office of Archaeology and Historic Preservation in 1993 and 1996 which state the project would have no effect on evidence of historic, archaeological, scientific, or cultural importance known to be on or next to the site. More information on the Section 106 review process is available at <http://www.onecpd.info/environmental-review/historic-preservation/>.

HUD's process for tribal consultation under Section 106 is described in a Notice available at <https://www.onecpd.info/resource/2448/notice-cpd-12-006-tribal-consultation-under-24-cfr-part-58>.

If you do not wish to consult on this project, can you please inform us? If you do wish to consult, can you please include in your reply the name and contact information for the tribe's principal representative in the consultation? Thank you very much. We value your assistance and look forward to consulting further if there are historic properties of religious and cultural significance to your tribe that may be affected by this project.

If you have any questions, please feel free to contact Shelley Kjos by email at skjos@co.skagit.wa.us or by telephone at (360) 416-1513.

Sincerely,



Tim Holloran
County Administrator

Cc: Shelley Kjos, Housing Resource Coordinator, Skagit County Public Health
Enclosure: Location Map



SKAGIT COUNTY ADMINISTRATIVE SERVICES

TIM HOLLORAN, COUNTY ADMINISTRATOR

May 23, 2019

Kerry Lyste, Tribal Historic Preservation Officer
Stillaguamish Tribe of Indians of Washington
PO Box 277
Arlington, WA 98223-0277

Re: Home Trust of Skagit Channel Cove Housing Project, Park Street in La Conner, WA
Department of Housing and Urban Development HOME Investment Partnerships Program

Dear Mr. Lyste:

Skagit County is considering funding the project listed above with federal funds from the U.S. Department of Housing and Urban Development (HUD). Under HUD regulation 24 CFR 58.4, Skagit County has assumed HUD's environmental review responsibilities for the project, including tribal consultation related to historic properties. Historic properties include archeological sites, burial grounds, sacred landscapes or features, ceremonial areas, traditional cultural places and landscapes, plant and animal communities, and buildings and structures with significant tribal association.

Skagit County will conduct a review of this project to comply with Section 106 of the National Historic Preservation Act and its implementing regulations 36 CFR Part 800. We would like to invite you to be a consulting party in this review to help identify historic properties in the project area that may have religious and cultural significance to your tribe, and if such properties exist, to help assess how the project might affect them. If the project might have an adverse effect, we would like to discuss possible ways to avoid, minimize or mitigate potential adverse effects.

To meet project timeframes, if you would like to be a consulting party on this project, can you please let us know of your interest within 30 days? If you have any initial concerns with impacts of the project on religious or cultural properties, can you please note them in your response?

Enclosed is a map that shows the project. The proposed project is the new construction of five affordable homes at Channel Cove in La Conner, WA. Three homes will be approximately 1300 square feet and 2 will be approximately 1000 square feet. The property is located in Skagit County, east of the Swinomish Channel, at the end of Park Street, between Park and Fourth. The footprint of the project will be approximately 15,000 square feet. Channel Cove is a planned residential community with high-density housing, lawn, trees, parking areas, and

playgrounds. The site is surrounded by lower density, single-family homes, fields, and wetlands. Home Trust of Skagit (HTS) owns the land and 18 rental homes on the property. There are also nine owner-occupied homes on land leased from Home Trust Skagit, for a total of 27 homes currently on the site. All utilities and neighborhood infrastructure are in place. The five affordable homes to be constructed by HTS as part of this project is the completion of the Southfield Planned Unit Residential Development, which was approved in 1997.

In Skagit County, there is a need for affordable housing. Potential beneficiaries are households with incomes at or below 80 percent of the Area Median Income (AMI), adjusted for family size. Skagit County has tentatively awarded \$63,746.45 in HOME Community Housing Development Organization (CHDO) development funds to HTS for this project. The NEPA review is estimated to be complete by October 2109. If approved, HTS projects that the Channel Cove project will be complete 7 months later, by May 2020.

The NEPA and SEPA from the 1997 Southfield PURD review reference letters from WA Department of Community, Trade and Economic Development Office of Archaeology and Historic Preservation in 1993 and 1996 which state the project would have no effect on evidence of historic, archaeological, scientific, or cultural importance known to be on or next to the site. More information on the Section 106 review process is available at <http://www.onecpd.info/environmental-review/historic-preservation/>.

HUD's process for tribal consultation under Section 106 is described in a Notice available at <https://www.onecpd.info/resource/2448/notice-cpd-12-006-tribal-consultation-under-24-cfr-part-58>.

If you do not wish to consult on this project, can you please inform us? If you do wish to consult, can you please include in your reply the name and contact information for the tribe's principal representative in the consultation? Thank you very much. We value your assistance and look forward to consulting further if there are historic properties of religious and cultural significance to your tribe that may be affected by this project.

If you have any questions, please feel free to contact Shelley Kjos by email at skjos@co.skagit.wa.us or by telephone at (360) 416-1513.

Sincerely,


Tim Holloran
County Administrator

Cc: Shelley Kjos, Housing Resource Coordinator, Skagit County Public Health
Enclosure: Location Map



SKAGIT COUNTY ADMINISTRATIVE SERVICES

TIM HOLLORAN, COUNTY ADMINISTRATOR

May 23, 2019

Carolyn Lubenau, Tribal Chairwoman
Snoqualmie Indian Tribe
PO Box 969
Snoqualmie, WA 98065

Re: Home Trust of Skagit Channel Cove Housing Project, Park Street in La Conner, WA
Department of Housing and Urban Development HOME Investment Partnerships Program

Dear Chairwoman Lubenau:

Skagit County is considering funding the project listed above with federal funds from the U.S. Department of Housing and Urban Development (HUD). Under HUD regulation 24 CFR 58.4, Skagit County has assumed HUD's environmental review responsibilities for the project, including tribal consultation related to historic properties. Historic properties include archeological sites, burial grounds, sacred landscapes or features, ceremonial areas, traditional cultural places and landscapes, plant and animal communities, and buildings and structures with significant tribal association.

Skagit County will conduct a review of this project to comply with Section 106 of the National Historic Preservation Act and its implementing regulations 36 CFR Part 800. We would like to invite you to be a consulting party in this review to help identify historic properties in the project area that may have religious and cultural significance to your tribe, and if such properties exist, to help assess how the project might affect them. If the project might have an adverse effect, we would like to discuss possible ways to avoid, minimize or mitigate potential adverse effects.

To meet project timeframes, if you would like to be a consulting party on this project, can you please let us know of your interest within 30 days? If you have any initial concerns with impacts of the project on religious or cultural properties, can you please note them in your response?

Enclosed is a map that shows the project. The proposed project is the new construction of five affordable homes at Channel Cove in La Conner, WA. Three homes will be approximately 1300 square feet and 2 will be approximately 1000 square feet. The property is located in Skagit County, east of the Swinomish Channel, at the end of Park Street, between Park and Fourth. The footprint of the project will be approximately 15,000 square feet. Channel Cove is a planned residential community with high-density housing, lawn, trees, parking areas, and

playgrounds. The site is surrounded by lower density, single-family homes, fields, and wetlands. Home Trust of Skagit (HTS) owns the land and 18 rental homes on the property. There are also nine owner-occupied homes on land leased from Home Trust Skagit, for a total of 27 homes currently on the site. All utilities and neighborhood infrastructure are in place. The five affordable homes to be constructed by HTS as part of this project is the completion of the Southfield Planned Unit Residential Development, which was approved in 1997.

In Skagit County, there is a need for affordable housing. Potential beneficiaries are households with incomes at or below 80 percent of the Area Median Income (AMI), adjusted for family size. Skagit County has tentatively awarded \$63,746.45 in HOME Community Housing Development Organization (CHDO) development funds to HTS for this project. The NEPA review is estimated to be complete by October 2109. If approved, HTS projects that the Channel Cove project will be complete 7 months later, by May 2020.

The NEPA and SEPA from the 1997 Southfield PURD review reference letters from WA Department of Community, Trade and Economic Development Office of Archaeology and Historic Preservation in 1993 and 1996 which state the project would have no effect on evidence of historic, archaeological, scientific, or cultural importance known to be on or next to the site. More information on the Section 106 review process is available at <http://www.onecpd.info/environmental-review/historic-preservation/>.

HUD's process for tribal consultation under Section 106 is described in a Notice available at <https://www.onecpd.info/resource/2448/notice-cpd-12-006-tribal-consultation-under-24-cfr-part-58>.

If you do not wish to consult on this project, can you please inform us? If you do wish to consult, can you please include in your reply the name and contact information for the tribe's principal representative in the consultation? Thank you very much. We value your assistance and look forward to consulting further if there are historic properties of religious and cultural significance to your tribe that may be affected by this project.

If you have any questions, please feel free to contact Shelley Kjos by email at skjos@co.skagit.wa.us or by telephone at (360) 416-1513.

Sincerely,



Tim Holloran
County Administrator

Cc: Shelley Kjos, Housing Resource Coordinator, Skagit County Public Health
Enclosure: Location Map



SKAGIT COUNTY ADMINISTRATIVE SERVICES

TIM HOLLORAN, COUNTY ADMINISTRATOR

May 23, 2019

Kevin Joseph, Tribal Historic Preservation Officer
Sauk-Suiattle Indian Tribe
5318 Chief Brown Lane
Darrington, WA 98241

Re: Home Trust of Skagit Channel Cove Housing Project, Park Street in La Conner, WA
Department of Housing and Urban Development HOME Investment Partnerships Program

Dear Mr. Joseph:

Skagit County is considering funding the project listed above with federal funds from the U.S. Department of Housing and Urban Development (HUD). Under HUD regulation 24 CFR 58.4, Skagit County has assumed HUD's environmental review responsibilities for the project, including tribal consultation related to historic properties. Historic properties include archeological sites, burial grounds, sacred landscapes or features, ceremonial areas, traditional cultural places and landscapes, plant and animal communities, and buildings and structures with significant tribal association.

Skagit County will conduct a review of this project to comply with Section 106 of the National Historic Preservation Act and its implementing regulations 36 CFR Part 800. We would like to invite you to be a consulting party in this review to help identify historic properties in the project area that may have religious and cultural significance to your tribe, and if such properties exist, to help assess how the project might affect them. If the project might have an adverse effect, we would like to discuss possible ways to avoid, minimize or mitigate potential adverse effects.

To meet project timeframes, if you would like to be a consulting party on this project, can you please let us know of your interest within 30 days? If you have any initial concerns with impacts of the project on religious or cultural properties, can you please note them in your response?

Enclosed is a map that shows the project. The proposed project is the new construction of five affordable homes at Channel Cove in La Conner, WA. Three homes will be approximately 1300 square feet and 2 will be approximately 1000 square feet. The property is located in Skagit County, east of the Swinomish Channel, at the end of Park Street, between Park and Fourth. The footprint of the project will be approximately 15,000 square feet. Channel Cove is a planned residential community with high-density housing, lawn, trees, parking areas, and

playgrounds. The site is surrounded by lower density, single-family homes, fields, and wetlands. Home Trust of Skagit (HTS) owns the land and 18 rental homes on the property. There are also nine owner-occupied homes on land leased from Home Trust Skagit, for a total of 27 homes currently on the site. All utilities and neighborhood infrastructure are in place. The five affordable homes to be constructed by HTS as part of this project is the completion of the Southfield Planned Unit Residential Development, which was approved in 1997.

In Skagit County, there is a need for affordable housing. Potential beneficiaries are households with incomes at or below 80 percent of the Area Median Income (AMI), adjusted for family size. Skagit County has tentatively awarded \$63,746.45 in HOME Community Housing Development Organization (CHDO) development funds to HTS for this project. The NEPA review is estimated to be complete by October 2109. If approved, HTS projects that the Channel Cove project will be complete 7 months later, by May 2020.

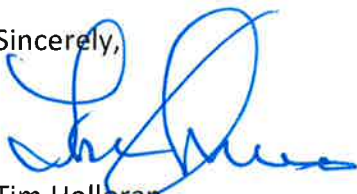
The NEPA and SEPA from the 1997 Southfield PURD review reference letters from WA Department of Community, Trade and Economic Development Office of Archaeology and Historic Preservation in 1993 and 1996 which state the project would have no effect on evidence of historic, archaeological, scientific, or cultural importance known to be on or next to the site. More information on the Section 106 review process is available at <http://www.onecpd.info/environmental-review/historic-preservation/>.

HUD's process for tribal consultation under Section 106 is described in a Notice available at <https://www.onecpd.info/resource/2448/notice-cpd-12-006-tribal-consultation-under-24-cfr-part-58>.

If you do not wish to consult on this project, can you please inform us? If you do wish to consult, can you please include in your reply the name and contact information for the tribe's principal representative in the consultation? Thank you very much. We value your assistance and look forward to consulting further if there are historic properties of religious and cultural significance to your tribe that may be affected by this project.

If you have any questions, please feel free to contact Shelley Kjos by email at skjos@co.skagit.wa.us or by telephone at (360) 416-1513.

Sincerely,



Tim Holloran
County Administrator

Cc: Shelley Kjos, Housing Resource Coordinator, Skagit County Public Health
Enclosure: Location Map



SKAGIT COUNTY ADMINISTRATIVE SERVICES

TIM HOLLORAN, COUNTY ADMINISTRATOR

May 23, 2019

Jacquelyn Ferry, Tribal Historic Preservation Officer
Samish Indian Nation
2918 Commercial Ave
Anacortes, WA 98221

Re: Home Trust of Skagit Channel Cove Housing Project, Park Street in La Conner, WA
Department of Housing and Urban Development HOME Investment Partnerships Program

Dear Ms. Ferry:

Skagit County is considering funding the project listed above with federal funds from the U.S. Department of Housing and Urban Development (HUD). Under HUD regulation 24 CFR 58.4, Skagit County has assumed HUD's environmental review responsibilities for the project, including tribal consultation related to historic properties. Historic properties include archeological sites, burial grounds, sacred landscapes or features, ceremonial areas, traditional cultural places and landscapes, plant and animal communities, and buildings and structures with significant tribal association.

Skagit County will conduct a review of this project to comply with Section 106 of the National Historic Preservation Act and its implementing regulations 36 CFR Part 800. We would like to invite you to be a consulting party in this review to help identify historic properties in the project area that may have religious and cultural significance to your tribe, and if such properties exist, to help assess how the project might affect them. If the project might have an adverse effect, we would like to discuss possible ways to avoid, minimize or mitigate potential adverse effects.

To meet project timeframes, if you would like to be a consulting party on this project, can you please let us know of your interest within 30 days? If you have any initial concerns with impacts of the project on religious or cultural properties, can you please note them in your response?

Enclosed is a map that shows the project. The proposed project is the new construction of five affordable homes at Channel Cove in La Conner, WA. Three homes will be approximately 1300 square feet and 2 will be approximately 1000 square feet. The property is located in Skagit County, east of the Swinomish Channel, at the end of Park Street, between Park and Fourth. The footprint of the project will be approximately 15,000 square feet. Channel Cove is a planned residential community with high-density housing, lawn, trees, parking areas, and

playgrounds. The site is surrounded by lower density, single-family homes, fields, and wetlands. Home Trust of Skagit (HTS) owns the land and 18 rental homes on the property. There are also nine owner-occupied homes on land leased from Home Trust Skagit, for a total of 27 homes currently on the site. All utilities and neighborhood infrastructure are in place. The five affordable homes to be constructed by HTS as part of this project is the completion of the Southfield Planned Unit Residential Development, which was approved in 1997.

In Skagit County, there is a need for affordable housing. Potential beneficiaries are households with incomes at or below 80 percent of the Area Median Income (AMI), adjusted for family size. Skagit County has tentatively awarded \$63,746.45 in HOME Community Housing Development Organization (CHDO) development funds to HTS for this project. The NEPA review is estimated to be complete by October 2109. If approved, HTS projects that the Channel Cove project will be complete 7 months later, by May 2020.

The NEPA and SEPA from the 1997 Southfield PURD review reference letters from WA Department of Community, Trade and Economic Development Office of Archaeology and Historic Preservation in 1993 and 1996 which state the project would have no effect on evidence of historic, archaeological, scientific, or cultural importance known to be on or next to the site. More information on the Section 106 review process is available at <http://www.onecpd.info/environmental-review/historic-preservation/>.

HUD's process for tribal consultation under Section 106 is described in a Notice available at <https://www.onecpd.info/resource/2448/notice-cpd-12-006-tribal-consultation-under-24-cfr-part-58>.

If you do not wish to consult on this project, can you please inform us? If you do wish to consult, can you please include in your reply the name and contact information for the tribe's principal representative in the consultation? Thank you very much. We value your assistance and look forward to consulting further if there are historic properties of religious and cultural significance to your tribe that may be affected by this project.

If you have any questions, please feel free to contact Shelley Kjos by email at skjos@co.skagit.wa.us or by telephone at (360) 416-1513.

Sincerely,



Tim Holloran
County Administrator

Cc: Shelley Kjos, Housing Resource Coordinator, Skagit County Public Health
Enclosure: Location Map



SKAGIT COUNTY ADMINISTRATIVE SERVICES

TIM HOLLORAN, COUNTY ADMINISTRATOR

May 23, 2019

Lena Tso, Tribal Historic Preservation Officer
Lummi Tribe
2665 Kwina Road
Bellingham, WA 98226

Re: Home Trust of Skagit Channel Cove Housing Project, Park Street in La Conner, WA
Department of Housing and Urban Development HOME Investment Partnerships Program

Dear Ms. Tso:

Skagit County is considering funding the project listed above with federal funds from the U.S. Department of Housing and Urban Development (HUD). Under HUD regulation 24 CFR 58.4, Skagit County has assumed HUD's environmental review responsibilities for the project, including tribal consultation related to historic properties. Historic properties include archeological sites, burial grounds, sacred landscapes or features, ceremonial areas, traditional cultural places and landscapes, plant and animal communities, and buildings and structures with significant tribal association.

Skagit County will conduct a review of this project to comply with Section 106 of the National Historic Preservation Act and its implementing regulations 36 CFR Part 800. We would like to invite you to be a consulting party in this review to help identify historic properties in the project area that may have religious and cultural significance to your tribe, and if such properties exist, to help assess how the project might affect them. If the project might have an adverse effect, we would like to discuss possible ways to avoid, minimize or mitigate potential adverse effects.

To meet project timeframes, if you would like to be a consulting party on this project, can you please let us know of your interest within 30 days? If you have any initial concerns with impacts of the project on religious or cultural properties, can you please note them in your response?

Enclosed is a map that shows the project. The proposed project is the new construction of five affordable homes at Channel Cove in La Conner, WA. Three homes will be approximately 1300 square feet and 2 will be approximately 1000 square feet. The property is located in Skagit County, east of the Swinomish Channel, at the end of Park Street, between Park and Fourth. The footprint of the project will be approximately 15,000 square feet. Channel Cove is a planned residential community with high-density housing, lawn, trees, parking areas, and

playgrounds. The site is surrounded by lower density, single-family homes, fields, and wetlands. Home Trust of Skagit (HTS) owns the land and 18 rental homes on the property. There are also nine owner-occupied homes on land leased from Home Trust Skagit, for a total of 27 homes currently on the site. All utilities and neighborhood infrastructure are in place. The five affordable homes to be constructed by HTS as part of this project is the completion of the Southfield Planned Unit Residential Development, which was approved in 1997.

In Skagit County, there is a need for affordable housing. Potential beneficiaries are households with incomes at or below 80 percent of the Area Median Income (AMI), adjusted for family size. Skagit County has tentatively awarded \$63,746.45 in HOME Community Housing Development Organization (CHDO) development funds to HTS for this project. The NEPA review is estimated to be complete by October 2109. If approved, HTS projects that the Channel Cove project will be complete 7 months later, by May 2020.

The NEPA and SEPA from the 1997 Southfield PURD review reference letters from WA Department of Community, Trade and Economic Development Office of Archaeology and Historic Preservation in 1993 and 1996 which state the project would have no effect on evidence of historic, archaeological, scientific, or cultural importance known to be on or next to the site. More information on the Section 106 review process is available at <http://www.onecpd.info/environmental-review/historic-preservation/>.

HUD's process for tribal consultation under Section 106 is described in a Notice available at <https://www.onecpd.info/resource/2448/notice-cpd-12-006-tribal-consultation-under-24-cfr-part-58>.

If you do not wish to consult on this project, can you please inform us? If you do wish to consult, can you please include in your reply the name and contact information for the tribe's principal representative in the consultation? Thank you very much. We value your assistance and look forward to consulting further if there are historic properties of religious and cultural significance to your tribe that may be affected by this project.

If you have any questions, please feel free to contact Shelley Kjos by email at skjos@co.skagit.wa.us or by telephone at (360) 416-1513.

Sincerely,



Tim Holloran
County Administrator

Cc: Shelley Kjos, Housing Resource Coordinator, Skagit County Public Health
Enclosure: Location Map



SKAGIT COUNTY ADMINISTRATIVE SERVICES

TIM HOLLORAN, COUNTY ADMINISTRATOR

May 23, 2019

Robert Brunoe, Tribal Historic Preservation Officer
Confederated Tribes of the Warm Springs Reservation of Oregon
PO Box C
Warm Springs, OR 97761-3001

Re: Home Trust of Skagit Channel Cove Housing Project, Park Street in La Conner, WA
Department of Housing and Urban Development HOME Investment Partnerships Program

Dear Mr. Brunoe:

Skagit County is considering funding the project listed above with federal funds from the U.S. Department of Housing and Urban Development (HUD). Under HUD regulation 24 CFR 58.4, Skagit County has assumed HUD's environmental review responsibilities for the project, including tribal consultation related to historic properties. Historic properties include archeological sites, burial grounds, sacred landscapes or features, ceremonial areas, traditional cultural places and landscapes, plant and animal communities, and buildings and structures with significant tribal association.

Skagit County will conduct a review of this project to comply with Section 106 of the National Historic Preservation Act and its implementing regulations 36 CFR Part 800. We would like to invite you to be a consulting party in this review to help identify historic properties in the project area that may have religious and cultural significance to your tribe, and if such properties exist, to help assess how the project might affect them. If the project might have an adverse effect, we would like to discuss possible ways to avoid, minimize or mitigate potential adverse effects.

To meet project timeframes, if you would like to be a consulting party on this project, can you please let us know of your interest within 30 days? If you have any initial concerns with impacts of the project on religious or cultural properties, can you please note them in your response?

Enclosed is a map that shows the project. The proposed project is the new construction of five affordable homes at Channel Cove in La Conner, WA. Three homes will be approximately 1300 square feet and 2 will be approximately 1000 square feet. The property is located in Skagit County, east of the Swinomish Channel, at the end of Park Street, between Park and Fourth. The footprint of the project will be approximately 15,000 square feet. Channel Cove is a planned residential community with high-density housing, lawn, trees, parking areas, and

playgrounds. The site is surrounded by lower density, single-family homes, fields, and wetlands. Home Trust of Skagit (HTS) owns the land and 18 rental homes on the property. There are also nine owner-occupied homes on land leased from Home Trust Skagit, for a total of 27 homes currently on the site. All utilities and neighborhood infrastructure are in place. The five affordable homes to be constructed by HTS as part of this project is the completion of the Southfield Planned Unit Residential Development, which was approved in 1997.

In Skagit County, there is a need for affordable housing. Potential beneficiaries are households with incomes at or below 80 percent of the Area Median Income (AMI), adjusted for family size. Skagit County has tentatively awarded \$63,746.45 in HOME Community Housing Development Organization (CHDO) development funds to HTS for this project. The NEPA review is estimated to be complete by October 2109. If approved, HTS projects that the Channel Cove project will be complete 7 months later, by May 2020.

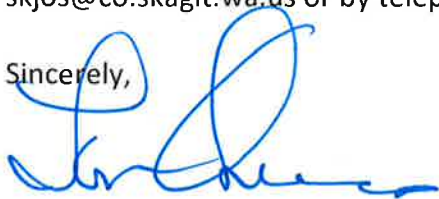
The NEPA and SEPA from the 1997 Southfield PURD review reference letters from WA Department of Community, Trade and Economic Development Office of Archaeology and Historic Preservation in 1993 and 1996 which state the project would have no effect on evidence of historic, archaeological, scientific, or cultural importance known to be on or next to the site. More information on the Section 106 review process is available at <http://www.onecpd.info/environmental-review/historic-preservation/>.

HUD's process for tribal consultation under Section 106 is described in a Notice available at <https://www.onecpd.info/resource/2448/notice-cpd-12-006-tribal-consultation-under-24-cfr-part-58>.

If you do not wish to consult on this project, can you please inform us? If you do wish to consult, can you please include in your reply the name and contact information for the tribe's principal representative in the consultation? Thank you very much. We value your assistance and look forward to consulting further if there are historic properties of religious and cultural significance to your tribe that may be affected by this project.

If you have any questions, please feel free to contact Shelley Kjos by email at skjos@co.skagit.wa.us or by telephone at (360) 416-1513.

Sincerely,



Tim Holloran
County Administrator

Cc: Shelley Kjos, Housing Resource Coordinator, Skagit County Public Health
Enclosure: Location Map



SKAGIT COUNTY ADMINISTRATIVE SERVICES

TIM HOLLORAN, COUNTY ADMINISTRATOR

May 23, 2019

Velma Kate Valdez, Tribal Historic Preservation Officer
Confederated Tribes and Bands of the Yakama Nation
PO Box 151
Toppenish, WA 98948-0151

Re: Home Trust of Skagit Channel Cove Housing Project, Park Street in La Conner, WA
Department of Housing and Urban Development HOME Investment Partnerships Program

Dear Ms. Valdez:

Skagit County is considering funding the project listed above with federal funds from the U.S. Department of Housing and Urban Development (HUD). Under HUD regulation 24 CFR 58.4, Skagit County has assumed HUD's environmental review responsibilities for the project, including tribal consultation related to historic properties. Historic properties include archeological sites, burial grounds, sacred landscapes or features, ceremonial areas, traditional cultural places and landscapes, plant and animal communities, and buildings and structures with significant tribal association.

Skagit County will conduct a review of this project to comply with Section 106 of the National Historic Preservation Act and its implementing regulations 36 CFR Part 800. We would like to invite you to be a consulting party in this review to help identify historic properties in the project area that may have religious and cultural significance to your tribe, and if such properties exist, to help assess how the project might affect them. If the project might have an adverse effect, we would like to discuss possible ways to avoid, minimize or mitigate potential adverse effects.

To meet project timeframes, if you would like to be a consulting party on this project, can you please let us know of your interest within 30 days? If you have any initial concerns with impacts of the project on religious or cultural properties, can you please note them in your response?

Enclosed is a map that shows the project. The proposed project is the new construction of five affordable homes at Channel Cove in La Conner, WA. Three homes will be approximately 1300 square feet and 2 will be approximately 1000 square feet. The property is located in Skagit County, east of the Swinomish Channel, at the end of Park Street, between Park and Fourth. The footprint of the project will be approximately 15,000 square feet. Channel Cove is a planned residential community with high-density housing, lawn, trees, parking areas, and

playgrounds. The site is surrounded by lower density, single-family homes, fields, and wetlands. Home Trust of Skagit (HTS) owns the land and 18 rental homes on the property. There are also nine owner-occupied homes on land leased from Home Trust Skagit, for a total of 27 homes currently on the site. All utilities and neighborhood infrastructure are in place. The five affordable homes to be constructed by HTS as part of this project is the completion of the Southfield Planned Unit Residential Development, which was approved in 1997.

In Skagit County, there is a need for affordable housing. Potential beneficiaries are households with incomes at or below 80 percent of the Area Median Income (AMI), adjusted for family size. Skagit County has tentatively awarded \$63,746.45 in HOME Community Housing Development Organization (CHDO) development funds to HTS for this project. The NEPA review is estimated to be complete by October 2109. If approved, HTS projects that the Channel Cove project will be complete 7 months later, by May 2020.

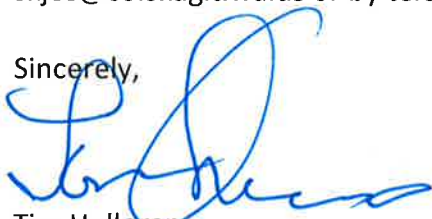
The NEPA and SEPA from the 1997 Southfield PURD review reference letters from WA Department of Community, Trade and Economic Development Office of Archaeology and Historic Preservation in 1993 and 1996 which state the project would have no effect on evidence of historic, archaeological, scientific, or cultural importance known to be on or next to the site. More information on the Section 106 review process is available at <http://www.onecpd.info/environmental-review/historic-preservation/>.

HUD's process for tribal consultation under Section 106 is described in a Notice available at <https://www.onecpd.info/resource/2448/notice-cpd-12-006-tribal-consultation-under-24-cfr-part-58>.

If you do not wish to consult on this project, can you please inform us? If you do wish to consult, can you please include in your reply the name and contact information for the tribe's principal representative in the consultation? Thank you very much. We value your assistance and look forward to consulting further if there are historic properties of religious and cultural significance to your tribe that may be affected by this project.

If you have any questions, please feel free to contact Shelley Kjos by email at skjos@co.skagit.wa.us or by telephone at (360) 416-1513.

Sincerely,



Tim Holloran
County Administrator

Cc: Shelley Kjos, Housing Resource Coordinator, Skagit County Public Health
Enclosure: Location Map

PROJECT REVIEW SHEET – EZ1

HISTORIC & CULTURAL RESOURCES REVIEW

PROPERTY / CLIENT NAME: _____ **FUNDING AGENCY:** _____

Project Applicant: _____

Contact Person: _____

Address: _____ County: _____

Phone: _____

E-Mail: _____

FUNDING AGENCY: DAHP will *email* our response directly to the agency/organization contact listed here. The Project Applicant will be copied on the response.

Agency/Organization: _____

Phone: _____

Email: _____

PLEASE DESCRIBE THE TYPE OF WORK TO BE COMPLETED

(Be as detailed as possible to avoid a request for additional information)

PLEASE DESCRIBE THE PROPOSED WORK AND DETAIL ALL GROUND DISTURBING ACTIVITIES

If building(s) over 45 years old will be altered or demolished, please complete a DAHP EZ-2 form in Wisaard for each building affected before submitting this form. Please include the Project Number generated by Wisaard for the EZ-2 form here: _____

Provide a detailed description of the proposed project:

Describe the existing project site conditions (include building age, if applicable):

Describe the proposed ground disturbing activities *including the approximate depth*:



PLEASE ATTACH A MAP of the PROJECT AREA

(Use Google Maps to find the location, then capture the image with the Snipping tool or other screen capture method. Click [HERE](#) for Snipping Tool Tutorial, if needed.)

PROJECT LOCATION:

Township: _____ Range: _____ Section: _____

(*Please include TRS if the project is in a rural area where an address is not available or may not help us locate the property.)

Please draw a line around the Project area.

Project Address: _____ City: _____ County: _____

CLICK in the box to upload a MAP. FILE must be JPEG format

eMail this form to:

Robert Whitlam, Ph.D.
State Archaeologist, DAHP
(360) 586-3080
rob.whitlam@dahp.wa.gov

NOTE: To save this fillable form you must fill it out in Adobe Acrobat or use the PRINT to PDF function in Acrobat Reader. In Reader choose File>Print and choose Adobe PDF as the printer. The file will save to your computer.

Please be aware that this form may only initiate consultation. For some projects, DAHP may require additional information to complete our review such as plans, specifications, and photographs. An historic property inventory form may need to be completed by a qualified cultural resource professional.





Allyson Brooks Ph.D., Director
State Historic Preservation Officer

June 12, 2019

Ms. Shelley Kjos
Skagit County Public Health
700 South Second Street # 301
Mount Vernon, Washington 98273

Re: Channel Cove Housing Project
Log No.: 2019-06-04216-HUD-CDBG

Dear Ms. Kjos;

We have been contacted by Ms. Rita Ordonez, representing the Home Trust of Skagit County. We have reviewed the material she provided by for the proposed Channel Cove Housing Project, La Conner, Skagit County, Washington.

We concur with the proposed Area of Potential Effect as described in her letter and illustrated in the attached map

Given the recorded archaeological resource and the area's landforms and environment that are sensitive for cultural resources, we request a professional archaeologist to survey the area proposed for ground disturbance.

We look forward to further consultations as you consult with the concerned tribal governments, provide the results of your cultural resources review, the professional archaeological survey report, and your Determination of Effect.

We would also request receiving any correspondence or comments from concerned tribes or other parties that you receive as you consult under the requirements of 36CFR800.4(a)(4). These comments are based on the information available at the time of this review and on behalf of the State Historic Preservation Officer in compliance with the Section 106 of the National Historic Preservation Act, as amended, and its implementing regulations 36CFR800.4.). Should additional information become available, our assessment may be revised. Thank you for the opportunity to comment and we look forward further collaborative efforts.

Sincerely,

A handwritten signature in blue ink, appearing to read 'Rob Whitlam', with a long horizontal flourish extending to the right.

Robert G. Whitlam, Ph.D.
State Archaeologist
(360) 586-3080
email: rob.whitlam@dahp.wa.gov



CULTURAL RESOURCES REPORT COVER SHEET

Author: Kelly R. Bush and Courtney M. Strehlow

Title of Report: Archaeological Report For Channel Cove Housing, La Conner, Skagit County, Washington

Date of Report: November 7, 2019

County: Skagit Township: 34 N Range: 02 E Section: 36

Quad: LaConner Acres: ~0.68

PDF of report submitted (REQUIRED) Yes

Historic Property Inventory Forms to be Approved Online? Yes No

Archaeological Site(s)/Isolate(s) Found or Amended? Yes No

TCP(s) found? Yes No

Replace a draft? Yes No

Satisfy a DAHP Archaeological Excavation Permit requirement? Yes # No

Were Human Remains Found? Yes DAHP Case # No

DAHP Archaeological Site #:

ARCHAEOLOGICAL REPORT FOR CHANNEL COVE HOUSING, LA CONNER, SKAGIT COUNTY, WASHINGTON

Prepared for: Birdsign Consulting



November 7, 2019

Prepared by:



1229 Cleveland Avenue, Mount Vernon, Washington 98273 • Tel 360-826-4930 • Fax 360-826-4830 • www.equinoxerci.com

CREDITS AND ACKNOWLEDGMENTS

PRINCIPAL INVESTIGATOR Kelly R. Bush, MA
LEAD AGENCY Skagit County
REPORT AUTHORS Kelly R. Bush, MA, and Courtney M. Strehlow, BA
GRAPHICS Courtney M. Strehlow, BA
FIELD RESEARCHERS Paige E. Hawthorne, MA, and Courtney M. Strehlow, BA
PROJECT CONTACT Rita Ordóñez, Birdsign Consulting
TRIBAL CONTACTS Jackie Ferry, Samish Indian Nation
..... Josephine Jefferson, Swinomish Indian Tribal Community
DAHP CONTACTS Dr. Robert Whitlam, State Archaeologist
..... Dr. Guy Tasa, State Physical Anthropologist
..... Stephanie Jolivette, Local Government Archaeologist

Equinox Research and Consulting International Inc. (ERCI) would like to thank Rita Ordóñez of Birdsign Consulting and Home Trust of Skagit County for retaining us for this investigation and for their commitment to the process and archaeological resources.

We extend our thanks to the representatives of the Samish Indian Nation and Swinomish Indian Tribal Community for their insights and timely attention to our projects.

The opinions and recommendations in this report are those of ERCI alone and do not necessarily reflect those held by any of the organizations or individuals mentioned above. Any errors or omissions are ERCI's responsibility.

MANAGEMENT SUMMARY

| | |
|--------------------|--|
| Project | 19-720 Birdsign- Channel Cove Housing |
| County | Skagit |
| TRS | Township 34 N Range 2E Section 36 |
| Quad | La Conner |
| Parcel ID | P128671, P128672, P128680, P128681, P128684, and P129848 |
| Address | Park St. La Conner, WA |
| Property Owner | Home Trust of Skagit County |
| Area | ~0.68 |
| Lat/Long | 48°23'9.62"N / 122°29'47.02"W |
| UTM Zone | Zone 10 Easting 537286 Northing 5359325 |
| Elevation | 5-9 ft |
| Nearest Water Body | Swinomish Channel |
| Nearest Arch Site | SK00147 ~0.04 miles |
| Soils | Skagit silt loam |
| Geology | Qac Holocene |

In September, 2019 Rita Ordóñez of Birdsign Consulting contacted Kelly R. Bush of Equinox Research and Consulting International Inc. (ERCI) to carry out an archaeological investigation at Channel Cove Housing in La Conner, in Skagit County, Washington

This report documents ERCI's background research and archaeological survey for the Project.

No protected cultural resources were identified during our fieldwork. The management recommendations that we are now providing are based on our findings from this initial investigation. We recommend that:

1. The proposed project proceed as planned with a UDP training for all workers on the site by a Professional Archaeologist and copy of the Unanticipated Discoveries Protocol (UDP) to be on site at all times (Appendix 3).
2. In the event that any ground-disturbing activities or other project activities related to this development or in any future development uncover protected cultural material (e.g., bones, shell, stone or antler tools), all work in the immediate vicinity should stop, the area should be secured, and any equipment moved to a safe distance away from the location. The on-site superintendent should then follow the steps specified in the UDP (Appendix 3).
3. In the event that any ground-disturbing activities or other project activities related to this development or in any future development uncover human remains, all work in the immediate vicinity should stop, the area should be secured, and any equipment moved to a safe distance away from the location. The on-site superintendent should then follow the steps specified in the UDP (Appendix 3).

CONTENTS

| | |
|--|-----|
| CREDITS AND ACKNOWLEDGMENTS..... | ii |
| MANAGEMENT SUMMARY..... | iii |
| FIGURES | v |
| TABLES..... | vi |
| 1.0 INTRODUCTION..... | 7 |
| 2.0 REGULATORY FRAMEWORK..... | 10 |
| 3.0 TRIBAL CONSULTATION..... | 10 |
| 4.0 BACKGROUND..... | 11 |
| 4.1 Physical Environment..... | 11 |
| Geology and geomorphology | 11 |
| Geology and Soils..... | 13 |
| Climate and vegetation..... | 15 |
| 4.2 Cultural Environment | 16 |
| Archaeological cultures | 16 |
| Salish Ethnography and Ethnohistory | 18 |
| Exploration and Immigration | 25 |
| 4.3 Previous Archaeology..... | 31 |
| Previously Recorded Archaeological Sites..... | 32 |
| Previous Cultural Resource Reports..... | 33 |
| National Register Properties..... | 34 |
| Cemeteries | 34 |
| Washington Heritage Register..... | 35 |
| Washington Heritage Barn Register..... | 35 |
| Archaeological Expectations: | 35 |
| 5.0 METHODS..... | 35 |
| 5.1 Archival Research..... | 35 |
| 5.2 Fieldwork..... | 36 |
| 6.0 RESULTS..... | 36 |
| 6.1 Pedestrian Survey | 36 |
| 6.2 Subsurface Survey | 38 |
| 6.3 Discussion..... | 44 |
| 7.0 MANAGEMENT RECOMMENDATIONS..... | 44 |
| 8.0 REFERENCES CITED | 45 |
| 9.0 APPENDICES..... | 63 |
| Appendix 1: Shovel Test Descriptions | 63 |
| Appendix 2: Photograph Log..... | 64 |
| Appendix 3: Unanticipated Discovery Protocol | 65 |

FIGURES

| | |
|---|----|
| Figure 1: Regional map showing approximate APE location. | 7 |
| Figure 2: USGS La Conner 7.5-minute quadrangle with APE outlined in red. | 8 |
| Figure 3: Skagit County Assessor Map showing APE outlined in red. | 8 |
| Figure 4: Lidar map with APE outlined in red (courtesy of Puget Sound Lidar Consortium). | 9 |
| Figure 5: Aerial photograph with APE outlined in red. | 9 |
| Figure 6: Map of surface geology (Washington Department of Natural Resources 2016) | 13 |
| Figure 7: Map of soils with APE indicated with blue lines (Soil Survey Staff 2019). | 14 |
| Figure 8: Sites of ethnographic winter villages in the lower Skagit River basin (after Roberts 1975:48). | 20 |
| Figure 9: Cooking in 1904 (courtesy of MSCUA, University of Washington Libraries, General Indian Collection, no. 564). | 22 |
| Figure 10: Example of a seasonal house, “Mat House—Skokomish” (1912) by Curtis (Northwestern University Library 2003). | 23 |
| Figure 11: Examples “Puget Sound Baskets” (1912) by Edward S. Curtis (Northwestern University Library 2003). | 24 |
| Figure 12: Basketry fragments from Fisher Slough, near Conway, Washington. | 24 |
| Figure 13: Example of the kind of weaving done by Coast Salish people, “Goat-hair Blanket— Cowichan” (1912) by Curtis (Northwestern University Library 2003). | 25 |
| Figure 14: Detail of 1919 GLO survey map showing a portion of the Swinomish Indian Reservation and La Conner (BLM GLO 2019b). | 28 |
| Figure 15: Shocked Oats on the Swinomish Flats in 1909 (Willis 1973:123). | 29 |
| Figure 16: The La Conner waterfront sometime between 1880 and 1885 (Willis 1973:105). | 30 |
| Figure 17: Gaches Mansion (La Conner Quilt and Textile Museum) in 2011. | 31 |
| Figure 18: View West of APE from road entrance shows plum trees, cement paths, and ERCI at ST 7. | 37 |
| Figure 19: View East of APE from ST 7 shows open grass field and plum trees. | 37 |
| Figure 20: View South of northwest area of APE from parking lot shows septic field. | 38 |
| Figure 21: Sketch Map of APE shows Negative STs and septic drain field. | 39 |
| Figure 22: View West of ST 2. | 40 |
| Figure 23: View West of ST 2 shows profile. | 40 |
| Figure 24: View Northwest of ST 4 shows plum trees and ERCI at ST 3. | 41 |
| Figure 25: View Northwest of ST4 shows profile. | 41 |
| Figure 26: View South of ST 7 shows profile and filter fabric. | 42 |
| Figure 27: Filter fabric at bottom of ST 7. | 42 |
| Figure 28: Wetland fill delineation map provide by Birdsign Consulting (Hatch 1993). | 43 |
| Figure 29: Example of historic feature for UDP. | 66 |
| Figure 30: Example of a historic foundation for UDP. | 66 |
| Figure 31: Example of historic glass artifacts for UDP. | 67 |
| Figure 32: Example of historic solder dot can for UDP. | 67 |
| Figure 33: Example of protected shell midden for UDP. | 68 |
| Figure 34: Example of protected rock lined hearth feature for UDP. | 68 |
| Figure 35: Example of projectile point for UDP. | 69 |
| Figure 36: Example of protected adze blade for UDP. | 69 |
| Figure 37: Example of stone tool for UDP. | 70 |
| Figure 38: Example of stone tool for UDP. | 70 |
| Figure 39: Example of bone awl for UDP. | 71 |
| Figure 40: Example of protected worked bone and spines for UDP. | 71 |

TABLES

Table 1: Previously recorded archaeological sites within two miles of the Project area..... 32
Table 2: Previous cultural resource reports on file with DAHP. 33

1.0 INTRODUCTION

In September, 2019 Rita Ordóñez of Birdsign Consulting contacted Kelly R. Bush of Equinox Research and Consulting International Inc. (ERCI) to carry out an archaeological investigation at Channel Cove Housing in La Conner, in Skagit County, Washington (Assessor's parcels P128671, P128672, P128680, P128681, P128684, and P129848). The property owner is in the planning stage of a final phase of residential development on the property. The Project includes the construction of 5 additional new residences, installation of utilities, and landscaping around the new residences including the replacement of several trees on the property. The size of the area surveyed is approximately 0.68 acres.

This report documents ERCI's background research and archaeological survey for the Project.



Figure 1: Regional map showing approximate APE location.

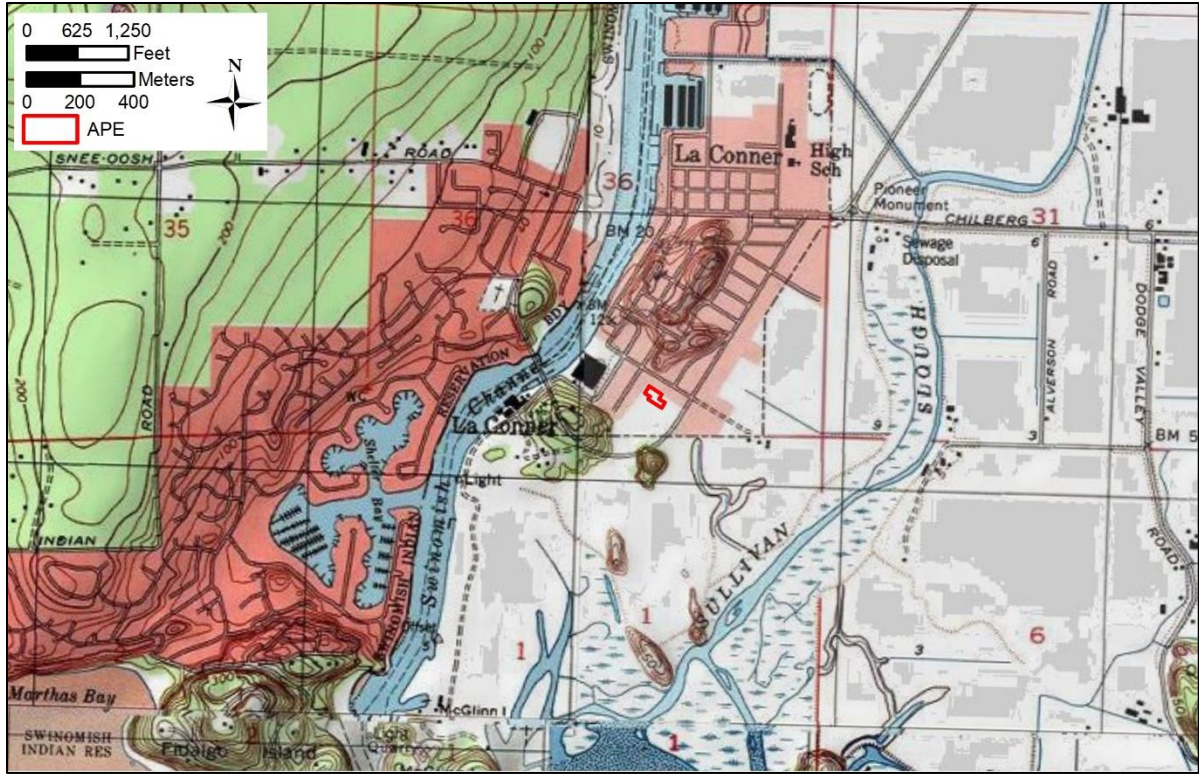


Figure 2: USGS La Conner 7.5-minute quadrangle with APE outlined in red.

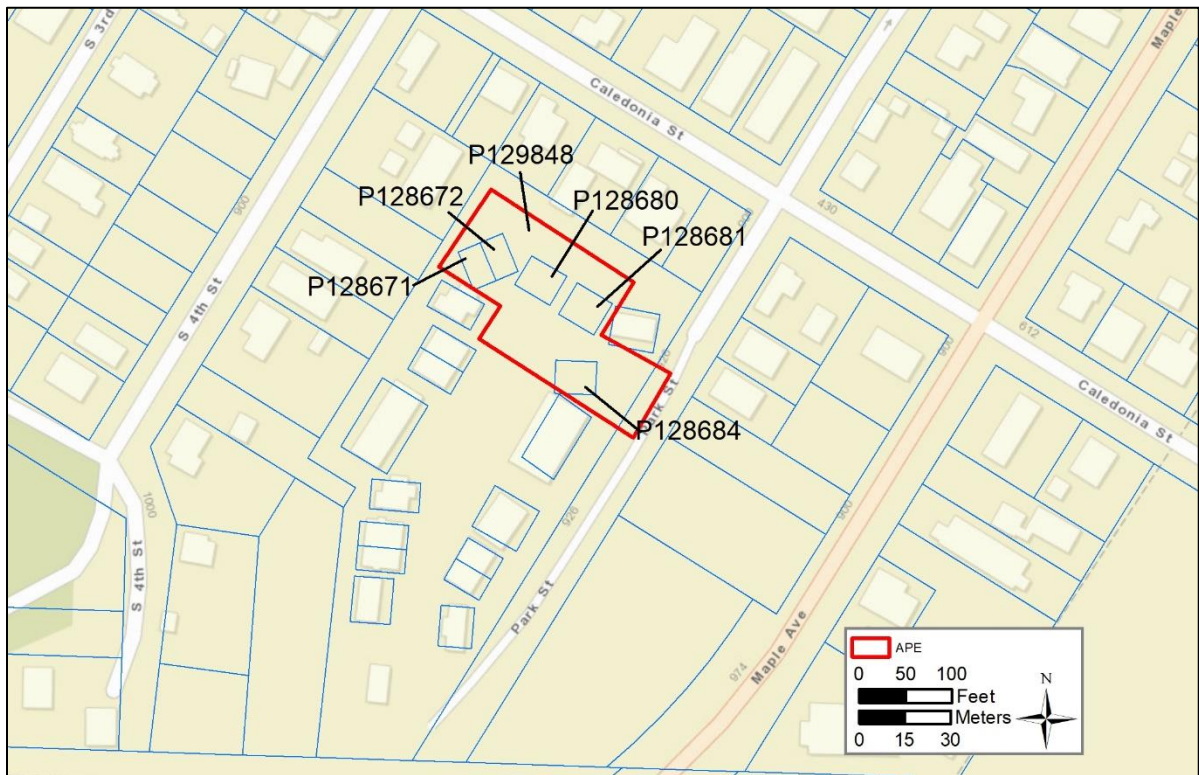


Figure 3: Skagit County Assessor Map showing APE outlined in red.



Figure 4: Lidar map with APE outlined in red (courtesy of Puget Sound Lidar Consortium).



Figure 5: Aerial photograph with APE outlined in red.

2.0 REGULATORY FRAMEWORK

Should Federal funding, permitting or licensing be involved in future Channel Cove Housing development, the project must comply with Section 106 of the National Historic Preservation Act of 1969, as amended (NHPA), which requires that federal agencies identify and assess the effects of federal undertakings on historic properties, including archaeological sites and traditional cultural properties, and to consult with others to find acceptable ways to avoid, minimize or resolve adverse effects.

Resources protected under Section 106 are those that are listed on or are eligible for listing on the National Register of Historic Places (the National Register). Eligible properties generally must be at least 50 years old, possess integrity of physical characteristics, and meet at least one of four significance criteria (described at 36 CFR 60.4). Historic properties may include archaeological sites, buildings, structures, districts, or objects. Amendments to Section 101 of the NHPA in 1992 explicitly allowed properties of traditional religious and cultural importance to be eligible for inclusion on the Register.

The State Environmental Policy Act (SEPA) requires that all major actions sponsored, funded, permitted, or approved by state and/or local agencies undergo planning to ensure environmental considerations such as impacts on historic and cultural resources are given due weight in decision-making. State implementing regulations are in WAC 197- 11 and WAC 468-12 (WSDOT). For details on SEPA procedures see Chapter 400. Skagit County is the responsible entity conducting NEPA for the project.

In Washington State, archaeological sites are protected by several state laws, including the Revised Code of Washington (RCW) 27.53—Archaeological Sites and Resources, and RCW 27.44—Indian Graves and Records. These laws require that consideration be given to archaeological resources during construction and development activities. RCW 27.44 also strictly mandates the protection of human skeletal remains and imposes a duty to notify law enforcement in the case of inadvertent discovery.

In addition, State of Washington Executive Order 05-05—Archaeological and Cultural Resources stipulates that all state agencies “Take reasonable action to avoid, minimize or mitigate adverse effects to the archaeological or cultural resource.”

3.0 TRIBAL CONSULTATION

Agencies for the federal government recognize the long and unique relationship that the federal government has had with federally recognized Indian tribes. These responsibilities have grown from the historic relationship between the Federal government and the Indian tribes including treaties, public laws, policies, statutes, and executive orders. Paramount of these relationships are the treaties in which tribes have ceded portions of aboriginal lands to the U.S. Government in return for promises to protect tribal rights as self-governing communities within reservation lands as well as certain rights to use resources from non-reservation lands.

The consultation practice recognizes:

- Tribal sovereignty of federally recognized Indian tribes that possess nationhood status and retain inherent powers of self-governance and the authority to make and enforce laws, establish courts and establish dispute resolution mechanisms
- Government-to-government relationships according to the President’s Memorandum 1994, and Executive Order 13175, whereby consultation is a bilateral process of discussion and cooperation between sovereigns

- The need for consultation in good faith with tribal leaders and their representatives in order to develop strong partnerships with federally recognized Indian Tribes
- The need for respect of traditional tribal values and customs recognizing that certain historic properties may be essential elements of living cultures and communities
- That information about religious or sacred places can be sensitive and that tribal law may prohibit disclosure of certain information, therefore maintaining a commitment to withholding sensitive information from public disclosure to the extent allowable under law

Skagit County as the lead agency is responsible for identifying the affected tribes for this project and for carrying out consultation. Tribal representatives are the only people qualified to determine if Traditional Cultural Properties exist within the APE, whether they will be affected by the undertaking and how any suggested management strategies might work. They will require detailed development descriptions to adequately review the project.

The Samish Indian Nation and Swinomish Indian Tribal Community both have an interest in the La Conner area. Over the years, in discussions between Kelly Bush and Tribal representatives, the Tribes consider this area to be culturally and historically significant and are very concerned about changes to these important cultural landscapes.

4.0 BACKGROUND

Any archaeological undertaking requires knowledge of the physical surroundings (and their evolution) and the duration and kind of human activity in any given area. From this knowledge, archaeologists can develop the current best method to carry out field investigations. For example, environmental factors play an important role in the location and preservation of archaeological sites. Sediments and soils are of interest to cultural resource managers because they can be used for reconstructing past landscapes and landscape evolution, in estimating the age of surfaces and depositional episodes, and providing physical and chemical indicators of human occupation (Holliday 1992).

4.1 Physical Environment

The Project area lies just east of the Swinomish Channel in La Conner, Skagit County, Washington. The elevation ranges between 5 and 9 feet above sea level.

Previous disturbance to the Parcels includes

- Logging and clearing
- Dredging soils
- Residential construction and maintenance
- Construction and maintenance of roadways and installation of utilities
- Landscaping

Geology and geomorphology

For most of the last 2.6 million years—the Pleistocene Epoch—the Earth underwent drastic shifts in global temperature caused by periodic variations in the Earth’s orbital eccentricity, axial tilt and precession. The result has been 11 ‘ice ages,’ during which almost 30 percent of the world’s land surface was covered by sheets of ice as much as 3 kilometers (km) thick (Porter and Swanson 1998). Archaeological evidence supports an inference that the first humans entered the Americas as the most recent deglaciation progressed, and that by about 10,500 years ago, humans had populated North and South America from the Arctic Ocean to Tierra del Fuego.

As the last cold stage intensified, high-altitude valley glaciers grew in depth and extent, and through a process of coalescence formed the Cordilleran Ice Sheet, centered over the Pacific Northwest's mountain ranges: Coast Mountains, Cascade Range, Olympic Mountains, Columbia Mountains and Rocky Mountains. Further east in North America, ice simply accumulated in place, creating the Laurentide ice sheet, centered over Hudson Bay. During the cold periods ('glacials' or 'glaciations') so much of the world's water was stored as ice that global sea level dropped by as much as 150 meters (almost 500 feet). At the same time, beneath the ice Earth's crust was depressed by the enormous weight. Thus, during the last glaciation, much of what is now the coastline was below present-day sea level.

The most recent glacial period—the Fraser Glaciation—began about 25,000 years ago and ended by about 10,000. In that time the ice advanced and retreated twice in what is now the area of Puget Sound, first during the Everson Creek Stade and most recently in the Vashon Stade (Easterbrook 1986). At the height of the Vashon Stade—about 17,500 years ago—the Project area was under as much as 2 km of glacial ice (Porter and Swanson 1998:206). By about 16,500 years ago the ice was retreating—exposing the Puget Lowland and Cascade Range, and glacial meltwater carried rivers of sediment onto the lowlands, mantling the area with deep deposits that subsequent stream activity covered with alluvium in river valleys and built out deltas in Puget Sound.

As the ice sheets finally retreated the land rebounded and sea level rose. The precise timing of sea-level stabilization (eustasy) and the rate of post-glacial rebound (isostasy) varied from place to place due to a complex interplay between the underlying geology and the surficial geological processes that predominated at any given location. In the Pacific Northwest, most of the coastline has been within a few meters of present-day sea level for about the last 6,000 years (Anundsen et al. 1994), while in the northernmost parts of the Northern Hemisphere the land is still rebounding (Thorson 1980, 1989). Yet, in the Hakai Passage region of the central British Columbia coast, due to the particulars of geology and movement of the receding ice sheet, sea level has been relatively stable for most of the past 15,000 years (McLaren et al. 2014).

In the Salish Sea the picture is equally complex. Due to the gradual south-to-north progression of deglaciation and the relatively rapid rise of sea level in the early postglacial period, sea level in the southern Puget Sound was about 40 meters below its present elevation by 8,000 years ago (Thorson 1989). By contrast, in the northern Puget Sound at the same time, sea level was only about 10 m below its present elevation (Clague 1983; Easterbrook 1963; Kelsey et al. 2004; Thorson 1989).

Across the globe, sea level has been rising gradually since about 8,000 years ago. By about 5,000 years ago, sea level across Puget Sound was about 2 to 3 m below its present level; it reached its present-day elevation only in the last 1,500 years or so (Kelsey et al. 2004; Sherrod et al. 2000). For all these reasons, even though people have been in the region for 10,000 or more years, evidence for human occupation near the present Puget Sound coastline dates to the time since sea level stabilized at or near its present elevation. In general, evidence of earlier coastal occupation has been inundated by the encroaching sea.

The Skagit River delta has been growing westward for millennia. It terminated near Mount Vernon at approximately 5000 BP, at which time Fidalgo Island and the La Conner hill would have been some 10 kilometers from the mainland. Since then the delta has reached Fidalgo Island and the La Conner area; in fact, the Swinomish Channel is the last saltwater vestige of what was once a large embayment of the Salish Sea that comprised what is now Padilla Bay to the north and Skagit Bay to the south (see, for example, Dragovich et al. 2000a). Surface sediments in the Marina and adjacent land comprise artificial fill and recent alluvium (Dragovich et al. 2000b).

Geology and Soils

The geology of a region is important to archaeological investigations because it lays the foundation for landforms and soil development. Like the foundation of a house it determines the shape and subsequently the human use of the landscape above it. How water and sediment move across the surface of the earth is in a great part determined by the geology of a region. This, in turn, affects how people use the land. Slope, available water, exposed bedrock, the success of vegetation are all influenced by what is under the soil. We use the geology of the project area and the surrounding landscape to help assess the likelihood of encountering archaeological objects and features based on how the landscape would have influenced human activities in the past.

Surface Geology

The Washington State Department of Natural Resources (2016) map of surface geology shows a Holocene alluvium represented by Qa(c). A 2000 USGS map refers to this as a Nearshore deposit described as:

Mostly estuarine or tidal flat deposits composed of fine sand, silt, and clay; locally includes flood overbank deposits and marsh or peat deposits. Varies from massive silt or silt with organic or peaty mats and layers to rare, thinly bedded fine sand, silt, and clay deposits. (Dragovich et al 2000)

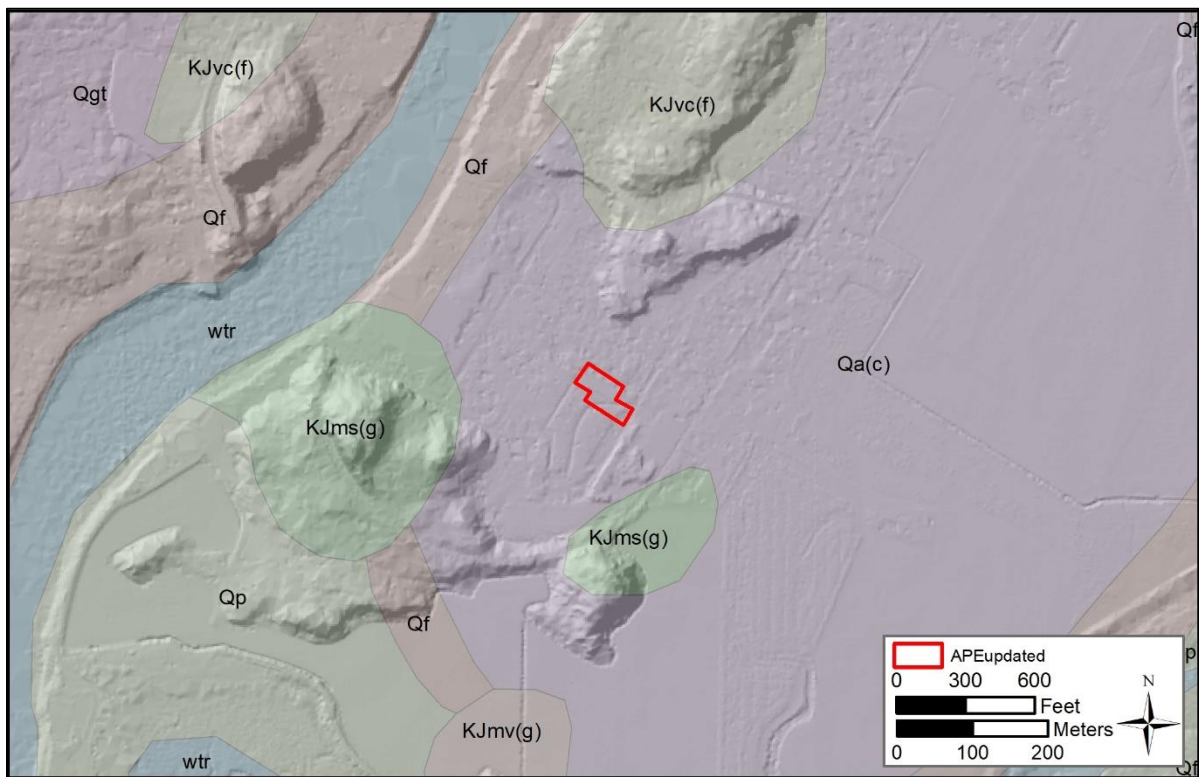


Figure 6: Map of surface geology (Washington Department of Natural Resources 2016)

Soils

Geologists define a soil as the effect of weathering on naturally or culturally deposited sediments, which creates discernible 'horizons' within a vertical soil profile. A soil typically comprises an A horizon that contains decomposed organic material mixed with the upper portion of the so-called parent material—usually naturally occurring deposits that are exposed to weathering. The A horizon lies above one or more horizons that develop as a result of water percolating downward, carrying chemicals leached from

the A and lower horizons. Soils vary from place to place across the landscape, in keeping with the type of sediments that form the parent material and the local environmental conditions. The horizons of different soil types display color variations according to the local soil chemistry. Color, coupled with the nature of the parent material are what enable soil scientists and archaeologists to distinguish one soil type from another, and, most importantly, to tell a naturally developed soil from a stratigraphic profile that results from cultural processes. A soil complex consists of areas of two or more soils, so intricately mixed or so small in size that they cannot be shown separately on the soil map. Each area of a complex contains some of each of the two or more dominant soils, and the pattern and relative proportions are about the same in all areas.

There is one soil type within the Project area: Skagit silt loam.



Figure 7: Map of soils with APE indicated with blue lines (Soil Survey Staff 2019).

Skagit silt loam-cultivated. (Colors are for moist soil unless otherwise noted).

0 to 6 inches; very dark grayish brown (10YR 3/2) silt loam, light brownish gray (10YR 6/2) dry; weak very fine and fine granular structure; slightly hard, very friable, slightly sticky and slightly plastic; few medium, and common very fine and fine roots; common very fine discontinuous irregular pores; slightly acid (pH 6.4); abrupt smooth boundary.

6 to 12 inches; dark brown (10YR 3/3) silt loam, pale brown (10YR 6/3) dry; few fine gray (5Y 5/1) redox depletions; weak medium and coarse subangular blocky structure; slightly hard, very friable, slightly sticky and slightly plastic; common very fine and fine roots; common very fine discontinuous irregular pores; slightly acid (pH 6.4); abrupt smooth boundary. (Combined thickness of Ap horizons is 9 to 14 inches)

12 to 20 inches; gray (5Y 6/1) silt loam, light gray (5Y 7/1) dry; common fine distinct brownish yellow (10YR 6/6) redox concentrations; weak very coarse prismatic structure; slightly hard, friable, moderately sticky and moderately plastic; common

very fine roots; many very fine, fine discontinuous irregular and common fine and medium vertical tubular pores; slightly acid (pH 6.2); gradual smooth boundary. (4 to 10 inches thick).

20 to 26 inches; gray (5Y 5/1) silty clay loam, white (5Y 8/1) dry; many fine and medium yellowish brown (10YR 5/6) and light olive brown (2.5Y 5/6) redox concentrations; weak very coarse prismatic structure parting to weak coarse subangular blocky; slightly hard, friable, moderately sticky and moderately plastic; few very fine roots; common fine vertical tubular pores and common very fine discontinuous irregular pores; common fine dark brown (10YR 3/3) organic stains and very fine organic remains throughout horizon; slightly acid (pH 6.2); clear smooth boundary. (3 to 8 inches thick)

26 to 31 inches; gray (5Y 6/1) silt loam, white (5Y 8/1) dry; many medium prominent brownish yellow (10YR 6/6) and yellowish brown (10YR 5/8) and common medium and large prominent pinkish white (7.5YR 8/2) and pink (7.5YR 8/4) redox concentrations; massive; slightly hard, friable, moderately sticky and moderately plastic; few very fine roots; common very fine discontinuous irregular pores and few fine vertical pores; moderately acid (pH 6.0); clear smooth boundary. (4 to 10 inches thick)

31 to 50 inches; gray (5Y 5/1, 6/1) silt loam, light gray (5Y 7/1) dry; many medium distinct yellowish brown (10YR 5/8) redox concentrations; massive; slightly hard, friable, moderately sticky and moderately plastic; few very fine roots; common very fine and few fine and medium tubular concretions; common medium very dark grayish brown (2.5Y 3/2) organic stains and common fine wood and charcoal fragments. slightly acid (pH 6.2). (8 to 20 inches thick)

50 to 61 inches; dark gray (5Y 4/1) very fine sandy loam, gray (5Y 6/1) dry; common medium distinct yellowish brown (10YR 5/6) redox concentrations; massive; slightly hard, friable, slightly sticky and nonplastic; neutral (pH 6.6).

(National Cooperative Soil Survey 2005)

Climate and vegetation

Prior to the influx of European immigrants, the Skagit River Valley and surrounding hills likely supported a mixed prairie/forest vegetation of Western Washington's climax hemlock (*Tsuga heterophylla*)/cedar (*Thuja plicata*) forests (Franklin and Dyrness 1988; Heusser 1983; Pojar and Mackinnon 1994; Turner 1995). As the project area is at the western edge of a prograding delta we don't see the climax forest development but the Skagit Flats would have been much marshier and would have been crisscrossed with a network of navigable channels. Larger sloughs would have berms along the margins from annual overbanking flood deposits and the relic glacial landforms like Pleasant Ridge and Fidalgo Island directly west of the project area would have had well established forests.

Today, warm, dry summers and mild, wet winters prevail in this biogeoclimatic zone. The Skagit River Valley has likely supported a wide variety of large and small mammals, birds, reptiles, and amphibians common to river deltas and foothill transition zones for millennia. Bear, cougar, deer and elk are the indigenous large mammals, with small mammals including otter, beaver, fox, porcupine, marten, snowshoe hare, bobcat, chipmunk and squirrel. Birds found in the project area consist of a wide variety of migratory and permanent waterfowl, shorebirds, raptors and songbirds. All five salmon species, as well as trout, bull trout (Dolly Varden), whitefish, sucker, lamprey and sturgeon live in the nearby Skagit River.

4.2 Cultural Environment

The Project area lies in a region that Native Americans had inhabited for at least 14,000 years by the time of contact with Europeans, when Salishan-speaking people occupied vast tracts in the Columbia and Fraser River basins, the inland waters of the Salish Sea, the Puget Lowland, the Cascade Range, and parts of the Pacific Coast between the Columbia River and the Olympic Peninsula. First contact with European explorers took place in the late sixteenth century, with Euro-American immigration beginning in the early nineteenth century and increasing after the Donation Land Claim Act of 1850. Here we present a synopsis of the archaeological cultures, traditional Salish lifeways, and pertinent details of the time since Euro-American occupation.

Archaeological cultures

Archaeological evidence of human presence in Western Washington is at least 14,000 years old in the upland areas, evidenced by finds of Clovis and other early postglacial cultural traditions (Ames and Maschner 1999; Kopperl 2016; Kopperl et al. 2016). Although people have been in the region all along, many archaeological sites on the relatively narrow strip of near-shore landscape were inhabited for the first time between 5,000 and 1,500 years ago due to prior sea-level changes that resulted from a complex interplay of climatic and geological processes whose magnitude and influence varied with location.

For example, large-magnitude changes in sea level can be due to the volume of water contained in Earth's glaciers and polar ice caps, but smaller (but nonetheless significant) changes can be caused by thermal expansion and contraction. At the same time, the earth's crust is dynamic. So, for example, the marine shoreline (continental margins) was significantly affected by depression and rebound in response to the weight of glaciers that formed during the last Ice Age. Smaller-magnitude changes occur due to the evolving global ocean basin morphology (and thus capacity) due to plate tectonics and coastal buildup and erosion, such as delta formation and growth.

The variability inherent in these combined processes means that each locality has its own unique history of sea-level change. Perhaps none is more illustrative of this than the Hakai Passage region of the central British Columbia coast, where sea level has been relatively stable for most of the past 14,000 years (McLaren et al. 2014) and impressions of human feet have been discovered preserved in clay that date to 13,200 years ago (CBC 2015).

As sea level rose in the early and middle Holocene, river valleys in the Puget Lowlands gradually filled up with sediment, burying any early archaeological sites in the near-stream areas. Thus, evidence for early human occupation around Puget Sound is found at higher elevations, on landforms that retain sediments from those earlier times, and also found, sometimes deeply buried, in the river valleys. In those upland areas, where sea level change has had no effect on archaeological visibility, evidence from the early Holocene is widespread, but well-dated contexts are extremely rare—most archaeological assemblages are 'dated' by their formal similarity to those recovered from dated contexts. Here we mention only the few well-dated archaeological occurrences.

The earliest period in Western Washington is represented by the Manis Mastodon Site (45CA218), near Sequim on the Olympic Peninsula and the Lower Bear Creek Site (45KI839), near the shore of Lake Sammamish. The Manis Site comprises a single disarticulated mastodon skeleton dated to about 13,800 cal BP (Waters et al. 2011), claimed to be associated with human activity based on a small bone splinter embedded in the head of a rib and two pieces of modified ivory. The Lower Bear Creek Site yielded an extensive artifact assemblage including artifacts belonging to the Western Stemmed Tradition that date to between 12,500 and 10,000 cal BP (Kopperl 2016).

In the Puget Sound regional cultural chronology, the Olcott Phase (ca. 10,000 to 7,550 years ago) succeeds the Fluted Point and Stemmed traditions. Olcott assemblages are remarkably similar to others attributed to the Old Cordilleran Tradition, well known from other parts of the Northwest Coast (Chatters et al. 2011). Typical Olcott artifacts include “Cascade” leaf-shaped bifaces, which bear distinctive edge grinding on the stem, or hafting portion, and often-heavily patinated expedient stone artifacts of medium- to coarse-grained raw material and lacking in fine-grained silicates. One can imagine that sites with such artifacts are the result of people arriving on this landscape for the first time, without intimate knowledge of sources of fine-grained tool stone such as chert and obsidian.

Again, although there are numerous sites ascribed to the Olcott Phase, securely dated components are rare, as evidenced by the few mentioned here. Thermoluminescence (TL) dating of fire-modified rock (FMR) from the Woodhaven Site (45SN417), near Granite Falls, produced median dates of 9,316 and 7,886 years ago (Kiers 2014). Two other Olcott Phase sites near Granite Falls, 45SN28 and 45SN303, yielded TL dates on FMR in the same age range, between 7,340 and 9,650 years ago (Chatters et al. 2011). In the North Cascades National Park near Marblemount and Newhalem in the Skagit River basin, the Cascades Pass site yielded artifacts and a cooking feature beneath Mazama volcanic ash, estimated to be 9,600 years old (Mierendorf et al. 2018:99). The Beech Creek Site (45LE415) in the Gifford Pinchot National Forest of southwestern Washington represents another early Holocene archaeological culture, the Stemmed Point Tradition, at 9,200 years old (Mack et al. 2010).

Between about 7,550 and 4,000 years ago—often termed the middle Holocene—well-dated archaeological sites are more numerous, in part due to the gradual stabilization of sea level near present elevations. The archaeological cultures are called by many names, but the Marymoor Phase and Charles Culture (or Mayne Phase in the San Juan/Gulf Islands) seem most common in the region. Many include microblade technology. Recent radiocarbon dates from calcined bone at the Marymoor Site (45KI9) range between approximately 5300 to 7000 BP (Chatters et al. 2017; Greengo and Houston 1970). Other sites in the region dated to the middle Holocene include Cattle Point (45SJ9) on San Juan Island (King 1950), the Glenrose Cannery Site (DgRr-22) near Vancouver, BC. (Matson 1976), the Milliken Site (DjRi-3) near Yale, B.C. (Borden 1960), and Pender Island (DeRt-1 and -2) in the Gulf Islands, the northern extension of the San Juan Islands (Carlson and Hobler 1993), the Marymoor Site (45KI9) in Redmond (Greengo and Houston 1970) and the Cascade Pass (45CH221) (Mierendorf et al. 2018). Some of these are the earliest coastal shell midden sites. The oldest dated shell midden component in the Puget Sound region is from the Dupont Site, 45PI72, which yielded a date of 5260 ±70 radiocarbon years before present (BP) (Wessen 1989).

Beginning roughly 5,000 years ago western red cedar became more prevalent in the coastal forests and archaeological evidence reveals the intensification of its use by the people living on the Salish Sea. Specifically, in the Locarno Beach Phase (3,300–3,500 to 2,500 years ago) and the succeeding Marpole Phase, the woodworking triad of the antler wedge, polished nephrite adze bit and hand maul formed an increasingly prominent part of coastal shell middens (Hebda and Mathewes 1984). In addition, evidence for large post and plank houses and food storage comes to the fore (Matson 2010). Artifact assemblages from this time also illustrate increasing social complexity in the form of personal adornment—e.g. finely made nephrite and jadeite labrets—refinements in procurement technology—e.g. ground slate knives, toggling harpoons and fishing paraphernalia—and ascribed status in the form of status symbols interred with infants and very young children, and cranial deformation. These archaeological manifestations comprise the climax Northwest Coast cultural pattern that was encountered when Europeans first visited the region.

Among the best known late precontact archaeological sites in the region are three National Register eligible sites on the Olympic Peninsula, Ozette (45CA24) (2,500 to 500 years ago) (e.g., Daugherty and Fryxell 1967), Hoko River (45CA213) (3,000 to 1,700 years ago) (Croes 1977, 1995), and Tse-whit-

zen (*cix^wicān*) Village (45CA523) (2,700 to 300 years ago) (Lewarch et al. 2005; White 2013). At Hoko River preserved botanical material in addition to the other artifacts common in most Northwest Coast middens, thus revealing a breadth of material culture similar to that known ethnographically—e.g., bentwood and composite fishhooks, atlats, bone and wood projectile points, basketry including hats and mats—underscoring the material and social complexity of the regional cultures that existed in the late precontact period. At Ozette, a portion of a late precontact village of the ocean-oriented, whaling west coast people was preserved by a mudslide that preserved the full range of perishable and nonperishable utilitarian and ceremonial artifacts, including whole decorated plank houses. 55,000 artifacts were recovered in the multiyear excavations, most of which can be viewed at the Makah Cultural and Research Center in Neah Bay, Washington. At least 64,700 artifacts were recovered during mitigative data recovery excavations at Tse-whit-zen, in what is now Port Angeles, including plank house structural remains—posts and post molds—hearths, processing areas, bone, antler and stone tools, and numerous Ancestral human interments (Lewarch et al. 2005; White 2013).

The recorded archaeological sites in this part of the Skagit delta are primarily along existing waterways, either saltwater shorelines or relic sloughs and ditches that haven't been straightened as part of the farming and land reclamation processes of the past 150 years. Most of these sites have a culture rich shell midden component with discarded shell, stone, bone and antler artifacts, carbon from fires, fire modified rocks and faunal (animal bones). Archaeological sites that are closer to the Cascade foothills in Mount Vernon or Conway are older because the surface of the delta developed from east to west.

Finally, the complex interplay of postglacial geological processes meant that salmon streams were constantly disrupted by cycles of erosion and deposition, which precluded establishment of nearshore marine resources and climax salmon runs between the time of deglaciation and that of sea-level stabilization, which began around 5,000 years ago and ended approximately 1,500 years ago (Fladmark 1975). Thus, prior to about 5,000 years ago, without the abundant, predictable salmon runs, the entire region would have been populated by mobile foragers (Grier et al. 2009; Moss et al. 2007). Since that time, the rich resources available in the maritime and riverine environments allowed for a more settled existence, and the region saw establishment of permanent residential villages, increasingly dense populations and complex cultures that existed at the time of European contact (Butler and Campbell 2004; Taylor et al. 2011).

Specific archaeological findings for the Marina and surroundings are discussed Section 4.3.

Salish Ethnography and Ethnohistory

A detailed description of the North Puget Sound's traditional Salish cultures is beyond the scope of this report. Instead, we present a broad overview of their traditional lifeways, including what is known of the precontact cultures, using knowledge gained from ethnography, ethnohistory, and the historic record. For in-depth descriptions of traditional Coast Salish culture, readers are directed to the following references: Adamson (1969), AFSC (1970), Allen (1976), Amoss (1977a, 1977b, 1978, 1981), Ballard (1929), Barnett (1938, 1955), Belcher (1986), Bennett (1972), Bierwert (1990, 1993, 1999), Boxberger (1986, 1996), Boyd (1994, 1999), Bruseth (1926), Collins (1950, 1952, 1974a, 1974b [1946], 1974c, 1980), Curtis (1913), Dewhirst (1976), Eells and Castile (1985), Elmendorf (1971, 1974, 1993), Guilmet et al. (1991), Gunther (1928, 1945), Haeberlin (1924), Haeberlin and Gunther (1930), Hansen (1981), Harmon (1998), Harris (1994), Howay (1918), Jorgensen (1969), Kew (1972, 1990), Lane and Lane (1977), Mansfield (1993), B. Miller (1993, 1995, 1997, 1998, 2001), Miller and Boxberger (1994), J. Miller (1988), Mooney (1976), Moss (1986), Riley (1974 [1953]), Roberts (1975), Sampson (1972), M. Smith (1941, 1950, 1956), Snyder (1954, 1964, 1980, 1981), Spier (1935, 1936), Stern (1934), Stewart (1973, 1977, 1979, 1984, 1996), Suttles (1957, 1958, 1960, 1974 [1951], 1987, 1990a, b), Suttles and Lane (1990), Taylor (1960, 1984), Tollefson (1992), Tremaine (1975), Tweddell (1974

[1953]), United States (1859), United States Court of Claims (1933), Waterman (1920) and Waterman et al. (2001).

The northern Puget Sound shoreline has been home to people for millennia. Ethnographic accounts, the historic record and the oral histories of the people who lived there have all provided a rich story of the lives and deaths of the area's original inhabitants.

Coast Salish social life

Social life began in the longhouse, a large, red cedar, post and beam structure clad in broad planks, in which up to twenty closely related families dwelt and cooperated economically. Frequently, longhouses were 100- to 200-foot-long structures, with gable or shed roofs. One or more longhouses comprised a village, usually situated advantageously with respect to the area's resources—often at the river mouth or on the main stem of the river at the mouth of a tributary stream. Each longhouse was led by the head of one of its resident, closely related, families.

Within each village one of the longhouses would have had more social influence than the others. Villages, too, were often ranked, and quite often the larger villages wielded more influence. Most decisions that affected the village were undertaken within a small group of those representing individual longhouses; those decisions affecting the tribe as a whole would be made amongst the leaders of individual villages and their constituents. Within and between villages, power and prestige were asserted and maintained by the Potlatch, a ceremonial feast held in celebration of important occasions, in which gifts were given by those who organized the celebration. In so doing, social and economic debts were created, reinforcing the social relationship between the giver and the recipient.

Winter village communities in the Skagit River region were considered independent social units and did not operate as part of an aggregate. Roberts (1975) records six village communities near the Project area; they are numbered 6–10 and 29 on Figure 8 (Roberts 1975:48).

Winter village community 6 was named *qaliqə* is on the north side of Swinomish Slough. According to Raymond Paul it was not a village, but the site of a gillnet. Village 7 on the map, *cux^wtədáči?*, is the location of what was a large smokehouse built in 1912 or 1913. Winter village 8 was called *x^wix^wc* and is in the location of the present-day Swinomish Indian Tribal Community village, across Swinomish Channel from La Conner. There was once a large longhouse in this location that burned down in 1900. The name of village 9 is unknown. According to Sampson (1972) it was a larger, fortified village with a ditch and ironwood stakes. The people of that village were impacted by smallpox (Roberts 1975). Village 10 on the map was called *sdi?íts*, which is the name for Snee Oosh Beach, and a temporary village. Winter village 29 was known as *bəstá?us* or *bəstá?ta?us*, where Pateus once lived: he was a signatory to the Point Elliot Treaty. His descendants still lived at this location in the 1970s (Roberts 1975).

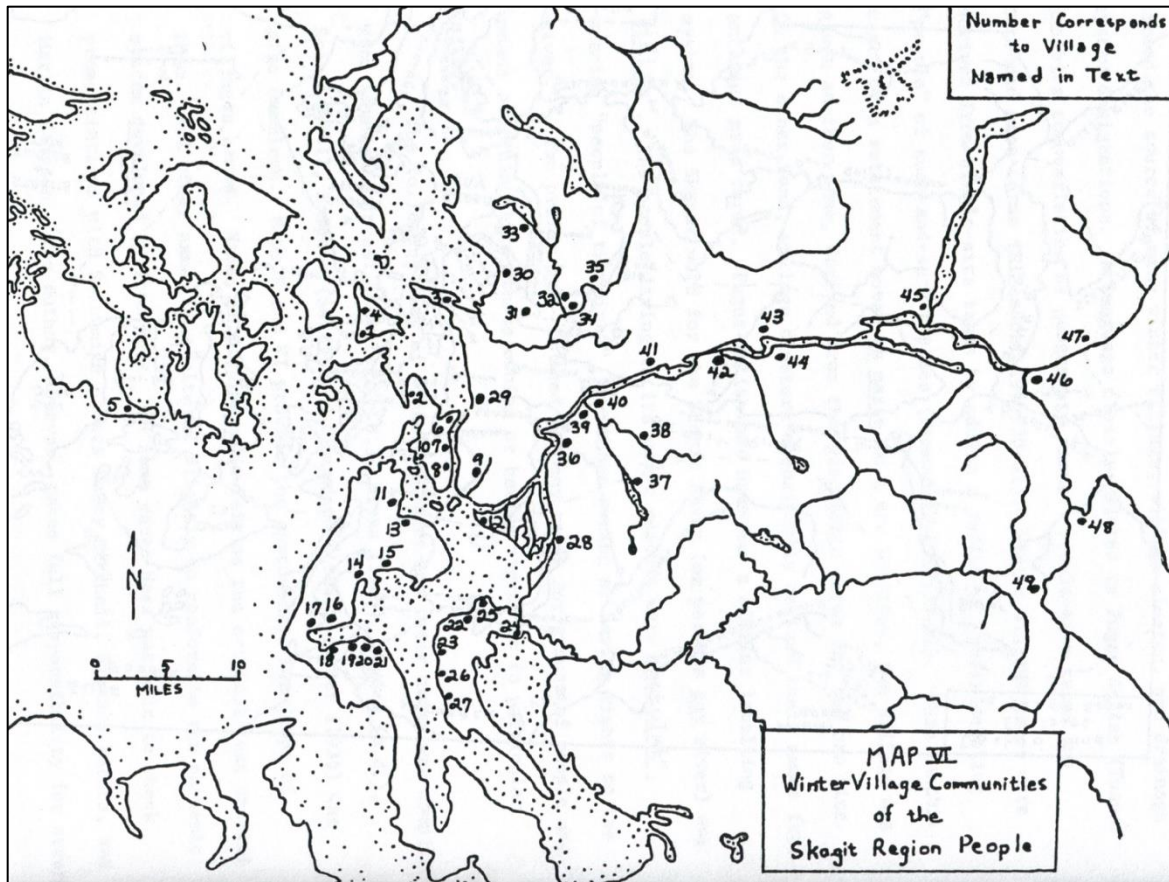


Figure 8: Sites of ethnographic winter villages in the lower Skagit River basin (after Roberts 1975:48).

Archaeological sites related to fishing activities that could be encountered in the project area include: collection sites for manufacturing fishing equipment materials, catching and processing fish, storage, fishing boundary markers; and private knowledge sites to acquire the skills or spirit power to catch fish. Each of these categories would have a variety of site types associated with them normally represented as discrete activity loci inside larger general use areas. As an example, storage areas might be located in a specific area of a village or processing area. Material collected for fish weirs; traps or nets might be found in areas near to where fishing occurred. Territorial boundary markers may be as subtle as a rocky outcropping near a weir or trap and be difficult to discern for someone unfamiliar with local knowledge or cultural affiliation. Processing areas might be found in association with catching sites or as an activity area within a material gathering site. All along the Swinomish Channel Sampson describes fish traps with hearts and leads that led the fish from deep water to the tidelands where they were picked up off the ground when the tide went out (Sampson 1972:28) Sampson also describes deep ditches filled with sharp ironwood stakes as part of the fortifications along the many small sloughs that led from Swinomish Channel.

As fish and fishing are of vital significance to the people of Skagit Delta, we might find associated elements within many of site types discussed. On the landscape we would expect to find fish procurement areas near to places where fish naturally gather due to water movement around landforms (back eddies), water temperature and velocity, cover and structure. Descriptions of relevant fishing tools and technology are found in Smith 1988; Snyder 1981; and Stewart 1977.

Fish are central to the culture of the Native Americans today and to their ancestors.

Salmon was not merely an important part of life – not a recreation and not solely a means of providing food--it was the heart of a whole way of life. It was the staple article of year-round diet; fresh, smoked, or dried...It was a major commodity in trade between tribes. Above all, it was a blessing for which the Indians always gave thanks....Many religious beliefs and tales concerned salmon, and these were often presented in the rituals....The ceremonies, stories and taboos exhibited a fundamental concept of the immortality of the salmon and the related desire not to offend it and endanger its return. The methods and skill of the aboriginal fishermen achieved extraordinary harvests but at the same time ensured continuation of the great runs (AFSC 1970:3).

The Skagit River Delta system contains all five salmon species, steelhead and a variety of trout. Like other types of resource gathering, fishing was sometimes a communal enterprise and at other times carried out by only one or two people in established fishing locations. Some traps and weirs may have been maintained by groups of related men (Snyder 1964:69). Skagit peoples would have fished for a variety of fish including saltwater species.

Numerous ethnographic accounts provide descriptions of fishing strategies, techniques, equipment and tools that were used on the salt water shorelines (Batdorf 1980; Snyder 1964; Stewart 1977). Fishing styles used in the Swinomish Channel would have included: fish traps, basket traps, large nets dragged in the water between two canoes, nets set in deep segments of the Channel, dip nets manipulated by hand, fish spears hurled from the bank, and line and bait (Collins 1974c:79).

Fishing was regulated traditionally, as is it today, within and between groups through a complex set of alliances. Fishing technology and styles have changed somewhat over millennia; however, the fundamental relationships to fish and fishing have remained.

Testimony that the descendants of aborigines had forsaken ancestral rites and adopted the same habits and aspirations as their non-Indian neighbors did not sway Judge Boldt. All the plaintiffs in the case, he declared, had established their status as Indian tribes. And even though “employment acculturation” and state law enforcement had drastically reduced the number of Indians who fished, most Indians were distinguished by the fact that the right to fish remained their “single most highly cherished interest and concern (Harmon 1998:240).

Fishing and processing of the catch, as well as associated feasting (Figure 9), played such a large and complex role in the culture of the traditional people of the Skagit Delta area that it could be discussed under any number of subheadings in this overview. Each part of the process was subject to cultural and religious sanctioning. Success in fishing is believed to be related to guardian spirit power, not just for the act of fishing, but also for the acquisition of materials and the building of fishing equipment. Acquiring and maintaining gear to catch and process fish is regarded equally as important as the ritual paraphernalia to bless the boats and catch. Complex ceremonies continue today to ensure safety of the fishing fleet and to provide healthy fish to eat.



Figure 9: Cooking in 1904 (courtesy of MSCUA, University of Washington Libraries, General Indian Collection, no. 564).

Economy

Coast Salish economies are often characterized by their relationship to the sea and the abundant and predictable resources it offers in addition to the plentiful salmon. Many Coast Salish resources were seasonal. This applied to salmon as much as to the berries and bulbs that formed an important part of the diet. For this reason, economic life most of the year meant leaving the permanent winter village and the longhouse and setting up seasonal camps where local resources were exploited. This often entailed constructing temporary shelters of wood and waterproof mats similar to those shown in Figure 10. Mat houses like this one illustrated would have been a common structure on the prairies, riverbanks and nearshore environments.



Figure 10: Example of a seasonal house, “Mat House—Skokomish” (1912) by Curtis (Northwestern University Library 2003).

Terrestrial resources were acquired by collecting and hunting. Using digging sticks, they collected bulbs of camas, wild potato, bracken and wood fern, cattail, wild carrot and others. Some plant products were preserved and stored for use during the winter. Fruits gathered were salmonberry, huckleberry, wild blackberry, raspberry, salal, serviceberry, and wild strawberry, as well as acorn and hazelnut (Haeberlin and Gunther 1930:20–21). They hunted elk and deer, beaver, bobcat, bear, marmot, cougar, as well as ducks and grouse. Seal and other sea mammals were hunted from canoes. As with the important salmon, all meat beyond immediate need was cured and stored for winter consumption. Trade back and forth for shellfish and other seafood for camas or dried meat was common (Haeberlin and Gunther 1930:20).

Material culture

In addition to the archaeological collections and oral histories much of what we know of traditional Coast Salish material culture derives from ethnographic collections residing in museums around the world, from the observations of ethnographers and historians, and photographs taken in the nineteenth and early twentieth centuries (e.g., Curtis 1913).

Coast Salish groups relied heavily on plants to create functional, decorative and ceremonial objects. For example, the red cedar tree provided wood for longhouses, canoes and storage containers, as well as bark that when shredded could be woven to make clothing, capes and head coverings. Cedar and spruce root were used along with other fiber to make baskets similar to those shown in Figure 11 for use when foraging or cooking, some so tightly woven that they were waterproof. Local and exotic stone was chipped or ground to fashion knives, spear, dart and arrow tips, mauls, wedges, adzes and chisels for woodworking, and ear and lip ornaments. Fishing barbs, combs, pins and many other items were fashioned from animal bone, antler, teeth and shell.



Figure 11: Examples “Puget Sound Baskets” (1912) by Edward S. Curtis (Northwestern University Library 2003).

Near Conway along the Skagit River archaeological site 45SK438 revealed among other things a fragment of basketry in buried flood deposits that was radiocarbon dated to approximately 300 years before present (Bush et al 2011).



Figure 12: Basketry fragments from Fisher Slough, near Conway, Washington.

Dog wool was spun and woven on a loom to produce blankets like the one shown in Figure 13. Although the loom is from Vancouver Island, such looms would have been common in the Project area. Some clothing was made from bear and buckskin. Among the many uses for marine shell, clam shell disc beads—“shell money”—were used for trade (Haeberlin and Gunther 1930:29). From an archaeological perspective only, special depositional circumstances could be expected to preserve most of these organic artifacts.

Summary

This overview has barely sketched traditional lifeways. The Salish People thrived for millennia and developed a rich and complex culture within an environment that supported a large population prior to European contact and the devastation of disease and political oppression. Despite these hardships the peoples of the region have resiliency and continue to fight for renewed political and economic power, at the same time working to preserve and maintain traditional cultural knowledge and beliefs.

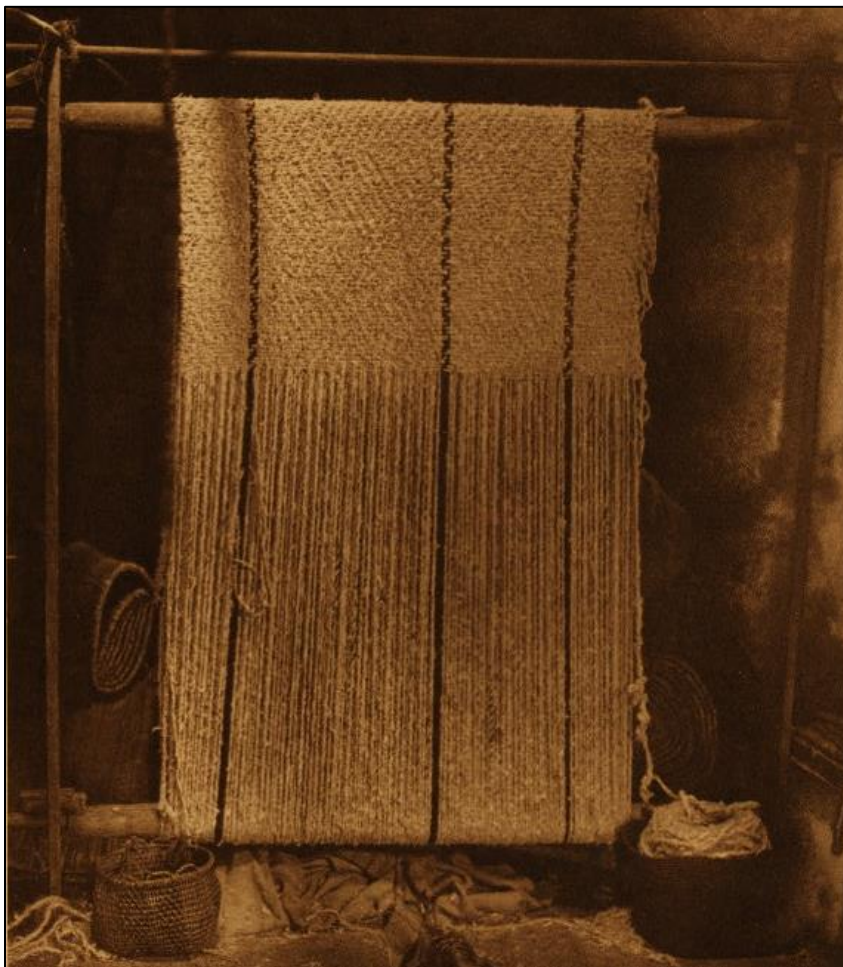


Figure 13: Example of the kind of weaving done by Coast Salish people, “Goat-hair Blanket—Cowichan” (1912) by Curtis (Northwestern University Library 2003).

Exploration and Immigration

The first documented exploration of the Pacific Northwest was a Spanish expedition in 1592, led by Greek-born Apostolus Valerianos, more commonly known as Juan de Fuca, after whom the entrance to the Salish Sea is named. Between 47° and 48° north latitude—after entering a “broad Inlet of the

Sea” de Fuca traveled for “twentie dayes ... passed divers Ilands ... went on Land in diver’s places, and ... saw some people on Land, clad in Beasts skins” (Purchas 1906 [1625]:416).

Some of the earliest English-language records of this region come from George Vancouver’s exploration of the Salish Sea. On June 4, 1792, he went ashore in the vicinity of Tulalip, near today’s Everett, Washington, and claimed for King George III the coast south to 39° 20’ N, which had been his first landfall. Vancouver was convinced of the historical justification of his claim and his maps all show British Territory from about 39° north latitude northward (Hayes 1999:85). The southern portion of the Salish Sea is named after Vancouver’s lieutenant, Peter Puget.

The Hudson’s Bay Company

The first Europeans to stay for any length of time in the Puget Sound area were traders, trappers and explorers associated with the Hudson’s Bay Company (HBC). From the 1820s through to the 1860s, HBC employees regularly traveled and traded around the Puget Sound (Harmon 1998). Tribes around Puget Sound took benefit from trading and bartering with HBC, and many were hired as guides. Fort Nisqually was established in 1833 at the southern end of Puget Sound, the first European settlement on Puget Sound (Bagley 1915). The Snohomish traded with HBC at Fort Nisqually (Ruby and Brown 1986:213). Using the Naches, Snoqualmie, and Yakima passes through the Cascades, even the Yakima people traded with HBC at Fort Nisqually and Fort Langley, to the north. The influence of HBC in the Puget Sound was felt by native people and immigrants alike (Suttles and Lane 1990).

The Donation Land Claim Act of 1850

The pace of immigrant settlement was encouraged by the US 31st Congress, with the 1850 passage of Statute 496, an unnamed Act known by various names, most commonly as the Donation Land Claim Act, which legitimized a practice originally set in motion by the territorial Provisional Government in 1843 (Robbins 2017). The Act was

to create the Office of Surveyor–General of the Public Lands in [the] Oregon [Territory], and to provide for the Survey, and to make Donations to Settlers of the said Public Lands. ... granted to every white settler or occupant of the public lands, American half-breed Indians included ... three hundred and twenty acres of land, if a single man, and if a married man ... the quantity of one section, or six hundred and forty acres, one half to himself and the other half to his wife, to be held by her in her own right ... [US Statute 496, September 27, 1850]

The law explicitly excluded African Americans and Hawaiians. Prior to its enactment Territorial Delegate Samuel Thurston had told Congress that extinguishing Indian title was the “first prerequisite step” to settling Oregon’s land question, so Congress had earlier authorized commissioners to negotiate treaties with that would, among other things, remove Native Americans from their land (Robbins 2017). What followed were the 1854 Treaty of Medicine Creek, the 1855 Treaties of Point Elliott, Point No Point, Neah Bay, Yakama, and Walla Walla, and the Quinault Treaty of 1856, by which the Native American tribes ceded their lands in return for continued resource procurement rights, ‘reservations’ (for some, but not all of the tribes), and a one-time payment. Once the treaties were in place, settlement and commercial exploitation of previously tribal lands proceeded almost unfettered.

Industry and infrastructure

Several large-scale commercial undertakings underpinned and dominated economic development and fueled settlement in the region during the nineteenth and early twentieth centuries: construction of transcontinental railroads, logging and sawmilling, mining, and hydroelectric power projects. The Northern Pacific Railway was the first transcontinental route to Puget Sound, completed in 1883 with its terminus at Tacoma. 1893 saw completion of the Great Northern Railway, which terminated in

Seattle and was the only privately funded such railway in US history. These railways and their local spurs promoted economic growth and prompted the founding and development of small, coastal sawmill towns throughout the region. Timber harvested locally, or rafted by sea and river, was milled and loaded on trains for transport to the east.

Early Skagit County and the Town of La Conner

In 1853 the Washington Territory was officially created. At this time Skagit County as well as Snohomish, Island, Whatcom and San Juan counties were all included as part of Island County. A year later Whatcom and Skagit County separated from Island as one entity. It was not until 1883 that Skagit broken off to become its own county (Oakley 2004). Numerous historic references are available for the Skagit Valley (e.g. Barrett et al. 1983; Jeffcott 1949; Jenkins 1984; Jordan 1974; Majors 1984; Meany 1957; Meeker 1905; Roberts 1975; Sampson 1972; Strickland 1984, 1990; Willis 1973,1975).

Large-scale Euro-American settlement of Skagit County did not begin until the early 1860s when Michael Sullivan and Samuel Calhoun began diking on the marshy Swinomish flats. “At first ridiculed, they proved that with diking, agriculture was possible on what was thought to be useless wetland” (Oakley 2004). Diking caught on in Skagit County and would become pivotal in the county’s growth.

Throughout the nineteenth century, Skagit County continued to grow, due in large part to agriculture, which became its main industry. Oats and peas were dominant crops initially, but they would later lose prominence to seed growing. “At one-point Skagit County grew 95 percent of the cabbage seed produced in the United States” (Oakley 2004).

In addition to agriculture, the dairy industry was also a significant contributor to the growth of early Skagit County.

At the turn of the century there were as many as 900 dairies in the county. These farms were small family operations where every cow had a name and mixed ancestry [Oakley 2004].

In what would later become La Conner, in 1873 John P. Kirby purchased Lot/Tract 5 of Section 25 Township 34 North Range 2 East and Lot/Tract 1 and 2 of Section 36 (BLM GLO 2019) (outlined in blue on Figure 14). In the same year James J. Conner paid cash for the E1/2 SE1/4 and Lot/Tracts 3, 4 and 5 Section 36 (BLM GLO 2019a) (outlined in green on Figure 14). These tracts comprise most of present-day La Connor.

Previous to those official transactions documenting the movement of land out of federal control, in 1867 Alonzo Low established a small trading post on land that would later become La Conner. The trading post was an unsuccessful venture, and in 1866 Thomas Hayes bought out Low and started a post office around 1868 (Interstate 1906:102). In 1869 John Conner bought the land. John S. Conner platted the town of La Conner in 1872 and gave it its name by adding the first initials of his wife’s Christian and middle names, Louisa Ann, to the family surname (Hood 2004).

La Conner was an island when the tide was high. The little town was rising on a rocky ridge beside the Swinomish Slough. To the east, southeast, and north stretched miles of marsh land laced with sloughs, which Calhoun, Sullivan and the men who followed them were just begging to reclaim from the sea and the tides by dikes. In front of it to the west lay Swinomish Slough, a channel navigable by shallow draft steamers at high tide. It offered a route between Whatcom on the north and Utsalady and Seattle on the south, a waterway which was safer from storms and dangerous tidal currents than the route west of Fidalgo Island [Willis 1973:51].

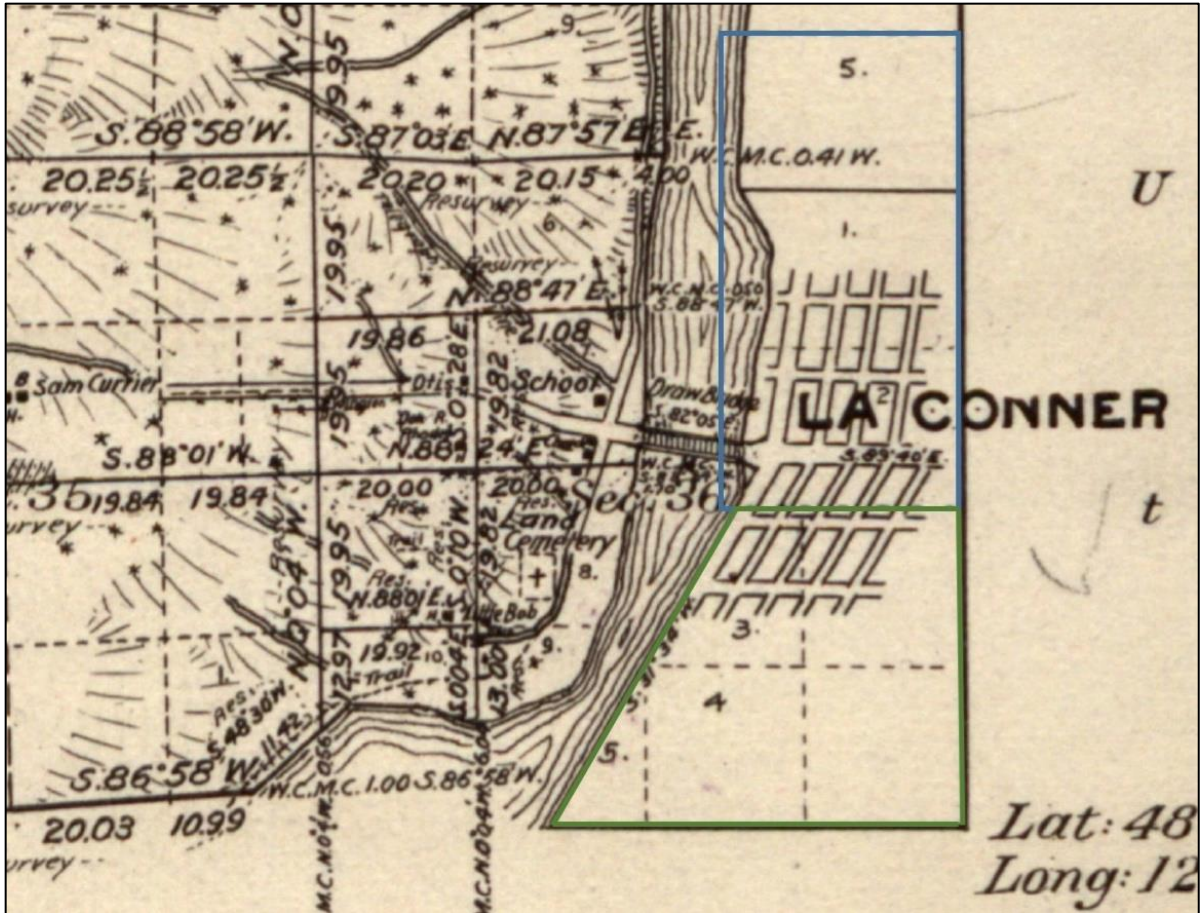


Figure 14: Detail of 1919 GLO survey map showing a portion of the Swinomish Indian Reservation and La Conner (BLM GLO 2019b).

La Conner found success as a harbor town, welcoming steamships and freighters that traveled the coast. The Swinomish flats to the north and west of the town provided opportunity for agricultural income to area residents (Figure 15). 1867 was a bumper crop year

The Gaches Brothers, merchants at La Conner, at one time shipped fifteen hundred and fifteen sacks of oats on the steamer Panama to San Francisco and by the steamer Dakota three thousand, eight hundred and forty, and they continued to make similar shipments every two weeks throughout the fall; also shipped about fifty bales of hops raised on the Skagit river.

The steamer Libby was, during the same season, making a weekly trip from La Conner to Seattle transporting grain, while several schooners were constantly engaged in carrying away the bountiful products of the season [Interstate 1906:114, 117].

By the late 1800s La Conner was a burgeoning community, home to a drug store, a furniture store, a mercantile, hotels, a seed company, saloons, boat building companies and more. The first school classes were held in 1876 (*Skagit River Journal* 2009). A newspaper, *Puget Sound Mail*, was also established in La Conner and would continue to be published weekly until the 1980s (Hood 2004; Willis 1973:52–53). George Calhoun, brother of Sam Calhoun, built a large house on Second and Douglas Street during these early years of the town. George Calhoun served as mayor of La Conner in 1884 and his brother, Sam, served the next term (Bourasaw 2004).



Figure 15: Shocked Oats on the Swinomish Flats in 1909 (Willis 1973:123).

When Skagit County was established in 1883 La Conner was the largest city in the newly formed county, and was chosen as the County Seat (Figure 16). The first Skagit County Auditor, H.P. Downs made his office in the La Conner Civic Garden Club building on Second Street. The county's official records were kept in a soapbox nailed to the wall of the building. La Conner lost its position as County Seat to Mount Vernon in 1884. The La Conner Civic Garden Club building, constructed in 1875, is still in use today as a community building. Over the years the building has been used as a grange hall, a school house, a federal court, a district court and a church (Hood 2004).

It had been generally assumed in La Conner and Anacortes that the former would be the permanent choice. As one elderly lady, born and brought up in the county, put it a few years ago. "La Conner was the stylish town." There was some surprise when Mount Vernon put forth its claims...The Puget Sound Mail of La Conner and the Northwest Enterprise of Anacortes vigorously supported La Conner's claim which was based on its position as an established port with a population larger than any other place in the county, and more amenities of life than any other [Willis 1973:106].

George Gaches built the Gaches Mansion, on South Second Street, in the 1891. George and his brother James had come to La Conner in 1873 and had helped to establish the town. George built the house in the style of a proper English mansion for his wife, Louisa, who was homesick for England. The Gaches moved to Seattle in 1900 and the mansion became a hospital run by Dr. G.E. Howe. The Vaughan family purchased the mansion from the doctor and the mansion was once more a residence. From the 1930s to the 1970s the mansion was used as a rooming house. Then, in 1973 the mansion was damaged by a fire. The citizens of La Conner restored the mansion, and it is now home to the La Conner Quilt Museum. It previously housed the Museum of Northwest Art (Figure 17) (Reece 1985:118).

In 1892 the United States Army Corps of Engineers (USACE) began diking and dredging the Swinomish Channel, known at the time as Swinomish Slough. The Swinomish Slough was a system of tidal sloughs, extensive salt marshes, and mud flats. The goal of the USACE diking and dredging project was to make the waterway an Inland Passage connecting Skagit and Padilla Bays for use by commercial and recreational water crafts. The project was completed in 1937 (Hood 2004).



Figure 16: The La Conner waterfront sometime between 1880 and 1885 (Willis 1973:105).

The late 1800s and early 1900s were a time of rapid change for Skagit County. The railroads arrived, the road systems were improved, a bridge was built over the Skagit River between Burlington and Mount Vernon, and horse transportation gave way to rail and cars (Willis 1975:VIII). It was also during this time frame that La Conner's dominance began to fade.

La Conner's period of greatness coincided with the time when water transportation was supreme, and it was an outlet for the produce of the Skagit flats and the market center where goods from the rest of the world could be obtained. The railroads and the improving roads undercut its dominant position but left it a charming town, rich in tradition and jealously conserving its own school system against the tide of consolidation [Willis 1975:54].

La Conner still has the flavor a fishing village—parts of the town center contribute to a National Register Historic District. La Conner today has become a tourist attraction thanks in part to the annual Skagit Valley Tulip Festival, celebrating the unique tulip crops produced on the Swinomish Flats and a haven for artists such as the noteworthy American author, Tom Robbins and the painter, Morris Graves. The town is home to several museums including the Skagit County Historical Museum, the La Conner Quilt Museum and the Museum of Northwest Art.

The Port of Skagit built and operates the 24-acre La Conner Marina, which occupies two basins on the Swinomish Channel: South Basin, completed in 1970, and the North Basin, finished in 1978 (see , above). Between them, the two basins have 366 covered and 131 open moorage slips, and 2,400 lineal feet of dock space to temporary moorage (Port of Skagit 2019a).



Figure 17: Gaches Mansion (La Conner Quilt and Textile Museum) in 2011.

4.3 Previous Archaeology

For general overviews of the archaeology and cultural resources of the Northwest Coast, see Ames (1995, 2003, 2005a, 2005b), Ames and Maschner (1999), Borden (1950, 1951, 1962, 1968, 1975), Boyd (1998, 1999), Burley (1980), Butler (1961), Butler and Campbell (2004), Campbell (1991), Carlson (1990), Carlson and Dalla Bona (1996), Erlandson et al. (1998), Fladmark (1975, 1982), Larsen and Gargett (2018a, 2018b), Matson and Coupland (1995), Matson et al. (2003), Meltzer (2004),

Meltzer and Dunnell (1987), Mitchell (1971, 1990), Nelson (1990), Pratt (1992), and Prentiss and Kuijt (2004, 2012).

The earliest archaeological studies of the northern Puget Sound are H.I. Smith’s (1900, 1907). In addition to those cited in the next two sections, more recent archaeological overviews can be found in Avey (1991), Avey and Starwich (1985), Blukis Onat (1987), Blukis Onat and Hollenbeck (1981), Blukis Onat et al. (1980), Blukis Onat and Kiers (2007a, 2007b), Bryan (1963), Burtchard (2007), Burtchard et al. (2003 [1998]), Campbell (1984), Carlson (1960), Carlson and Dalla Bona (1996), Carlson and Hobler (1993), Duncan (1977), Grabert (1968), Greengo (1983), Hale (1991), Hearne and Hollenbeck (1996), Hollenbeck (1987), Hollenbeck and Carter (1986), Juell (2006), Kidd (1964), Lewarch (1979), Lewarch and Larson (2003), Lewarch et al. (2005, 2006), Markert and Biggane (2006), Mattson (1971, 1989), Mierendorf (1986), Mierendorf et al. (1998), Miss and Campbell (1991), NWAA/EHC (2007), Rooke et al. (2002), Samuels (1993), Schalk (1988), A. Smith (1964), H.I. Smith (1900, 1907), Smith and Fowkes (1901), Snyder (1980, 1981), Stein (1984, 2000), Stein and Phillips (2002), Tarver (1963), Thrush (2007), Wessen (1988), Wessen and Welch (1991), Wessen and Stilson (1987).

Previously Recorded Archaeological Sites

Records of eleven archaeological sites within 1.5 miles of the Project area are on file at the Washington State Department of Archaeology and Historic Preservation (DAHP). A short description of the sites is provided below (Table 1).

Table 1: Previously recorded archaeological sites within two miles of the Project area.

| Site # | Type | Distance from Project area | Citations | NRHP Eligibility |
|---------|--------------------------------------|----------------------------|------------------|----------------------|
| SK00448 | Historic Site | 0.5 mi | Carrilho 2011 | Potentially Eligible |
| SK00428 | Historic Bridge | 0.4 mi | Smart 2010 | Potentially Eligible |
| SK00147 | Pre-Contact Fish Weir | 0.04 mi | Blukis Onat 1981 | Survey/Inventory |
| DT00011 | Pre-Contact District | 1.63 mi | Blukis Onat 1977 | Determined Eligible |
| SK00101 | Pre-Contact Fish Weir | 0.20 mi | Salo 1976 | Survey/Inventory |
| SK00077 | Pre-Contact Isolate | 1.5 mi | Fuller 1970 | Survey/Inventory |
| SK00055 | Pre-contact shell midden, burial | 1.3 mi | Mattson 1961 | Survey/Inventory |
| SK00028 | Pre-Contact shell midden | 0.8 mi | Bryan 1953a | Survey/Inventory |
| SK00029 | Pre-Contact shell midden | 0.65 mi | Bryan 1953b | Survey/Inventory |
| SK00030 | Pre-contact shell midden | 0.30 mi | Conca 1985 | Survey/Inventory |
| SK00031 | Pre-Contact village and shell midden | 0.5 mi | Bryan 1953c | Survey/Inventory |

SK00448 is a grouping of wood pilings supporting lumber cross-beams on the historic tide flats west of the Swinomish Channel, approximately **0.5 miles** northwest of the project area (Carrilho 2011).

SK00428—*Morris Street Bridge* is located along the west shore of the Swinomish Channel at the eastern terminus of SneeOosh Road, approximately **0.4 miles** northwest of the project area. The bridge was

constructed in 1915 and was a movable steel swing bridge that now stands as a remnant on the western channel shore (Smart 2010).

SK00147—La Conner Fish Trap is a pre-contact wooden fish trap located at the corner of Maple and Caledonia, approximately **0.04 miles** northeast of the project area. The structure is buried in alluvium. An unknown percentage of the site has been disturbed (Blukis Onat 1981).

DT00011—Sqwikwikwab is an archaeological district located approximately **1.63 miles** southeast of the project area. It is also known as Fishtown. No further details are given in the site or detail forms (Blukis Onat 1977).

SK00101 is a pre-contact fish weir consisting of an alignment of wooden poles and mesh (Salo 1976). It is located adjacent to a “rock island” about 150 feet west of the junction of Maple and Park Streets, approximately **0.20 miles** northeast of the project area.

SK00077 is a pre-contact isolate consisting of shell midden, fire-cracked rock, and a cobble tool located mostly on the bench of the present roadway, approximately **1.5 miles** southeast of the project area (Mattson 1961).

SK00055 consists of shell midden with human remains. Associated artifacts include celts, projectile points, and a salmon knife (Fuller 1970). The site is located just north of a rock quarry on Dodge Valley Road in Skagit County, approximately **1.3 miles** southeast of the project area.

SK00028 consists of layers of shell midden in a cove to the west of Swinomish Slough, approximately 0.8 miles from the project area. The shell midden is described as one foot thick and is undisturbed (Bryan 1953a).

SK00029 consists of undisturbed shell mound containing burnt earth, fish bone, and ash (Bryan 1953b). It is located on the north side of the head of a bay west of the Swinomish Channel, approximately **0.65 miles** southwest of the project area.

SK00030 is located on the south end of Fidalgo Island, adjacent to the Swinomish Channel, approximately **0.30 miles** west of the project area. The site consists of shell midden with fire-cracked rock and charcoal on both sides of a small stream (Conca 1985).

SK00031 is located on the west side of the Swinomish Channel approximately **0.5 miles** northwest of the project area. The site consists of mussel shell midden with other mollusks and faunal remains on a buried terrace (Munsell 1974). The midden is approximately 3 meters in depth (Munsell 1974).

Previous Cultural Resource Reports

There are fourteen reports on file with DAHP from previous cultural resource surveys within 1.5 miles of the Project area; they are listed below in Table 2.

Table 2: Previous cultural resource reports on file with DAHP.

| Author | Title | Date |
|--------|---|------|
| Bush | <i>Archaeological Investigation Report: La Conner School District, La Conner, Washington. Pedestrian survey, 150 shovel tests, no protected cultural resources.</i> | 2013 |

| Author | Title | Date |
|---------|---|-------|
| Larsen | <i>Archaeological Investigation Report: State Street (North 3rd Street to North 6th Street) Sidewalk Replacement Project, La Conner, Washington. 7 shovel tests, no protected cultural resources.</i> | 2018 |
| Gargett | <i>Archaeological Investigation Report: Town of La Conner N3rd Street Improvement Project. 19 shovel tests, no protected cultural resources.</i> | 2016 |
| Bush | <i>Letter to Ed Knight RE: Swinomish Indian Tribal Community Village Store Project. Monitoring, 3 trenches, no protected cultural resources.</i> | 2011a |
| Bush | <i>Archaeological Investigation Report: South Second Street Improvements. 3 shovel tests, no protected cultural resources.</i> | 2011b |
| Bush | <i>Archaeological Letter Report RE: Removal of the Old Willup Hose Most Commonly Known as Old Stubby's House, Swinomish Reservation. Monitoring of property removal, no protected cultural resources.</i> | 2010 |
| Smart | <i>Archaeological Investigation Report: Swadabs Marsh Habitat Restoration and Archaeological Site Protection Project. Protected cultural resources identified during sub-surface survey; 10 of 11 shovel tests were positive for shell midden. Updated site form submitted to DAHP.</i> | 2009 |
| Smart | <i>Archaeological Investigation Report: La Conner Waterfront Boardwalk. Pedestrian Survey, no protected cultural resources.</i> | 2011 |
| Bush | <i>Archaeological Investigation Report: Dodge Slough, Drainage and Irrigation Improvement District 22. Protected cultural resources associated with site 45SK77 were encountered during subsurface testing, 45SK77 site form updated with DAHP.</i> | 2009 |
| Bush | <i>Archaeological Investigation Report: McGlenn Fill Removal/marsh Restoration Project Site. Pedestrian survey, trench testing, and photo documentation. No protected cultural resources.</i> | 2008a |
| Bush | <i>Archaeological Investigation Report: Rainbow Fill Removal/Marsh Restoration Project Site. Pedestrian survey, trench testing, and photo documentation. No protected cultural resources.</i> | 2008b |
| Bush | <i>Letter to Brandon Haugness Regarding Monitoring Excavation for the Swinomish Indian Tribal Community Gas Pipeline Installation. Monitoring of trench excavation. No protected cultural resources.</i> | 2006 |
| Bush | <i>Archaeological Addendum Letter Swinomish Gymnasium Expansion Project La Conner. Monitoring plan. No protected cultural resources.</i> | 2004a |
| Bush | <i>Archaeological Investigation Report Swinomish Gymnasium Expansion Project. 15 shovel tests, no protected cultural resources.</i> | 2004b |

National Register Properties

There is one National Register Property on file with DAHP within 1.5 miles of the Project area. A short description is provided below.

DT00012—La Conner Historic District encompasses the main business area running along First St and parallel to Swinomish Channel. Most of the buildings are wood frame, and some are brick. The district is located approximately **0.30 miles** north of the project area (Hart 1972).

Cemeteries

There is one cemetery on file with DAHP within 1.5 miles of the Project area. A short description is provided below.

SK00390—*Swinomish Reservation Cemetery* is located on the west side of La Conner, south of Shelter Bay Road and west of Pioneer Way, approximately **0.40 miles** northwest of the project area. The earliest known burial date is 1877. There is no known latest burial date. The condition is described as well-maintained (DAHP 2019).

Washington Heritage Register

There is one Washington Heritage Register Property on file with DAHP within one mile of the Project area. A short description is provided below.

SK161—*Grange Hall* was built in 1875 and used as a court house for Southern Whatcom County and for Skagit County in 1884 (Siegfried 1970). It is approximately **0.30 miles** from the Project area.

SK281—*Rainbow Bridge*, constructed in 1957, crosses the Swinomish Channel (George 2001). It is approximately **0.24 miles** from the Project area.

Washington Heritage Barn Register

There are two State Barn Properties on file with DAHP within one mile of the Project area. A short description is provided below.

SK423—*Koudal, R.C., Barn* was built in 1929, displays a slight asymmetry due to one side constructed with a shed roof and the other with a hip roof (Campbell and Campbell 2009). It is approximately **0.45 miles** from the Project area.

SK361—*Dunlap, Isaac, Barn* is a horse barn built in 1880 with three stalls and the floor was entirely made of local timber (Jensen et al. 2008). It is approximately **0.30 miles** from the Project area.

Archaeological Expectations:

The project area is in a lowland between two headlands and would have at some time in the past been a navigable marsh area joining the Skagit Flats with the Swinomish Channel. Prior to that it could have been actual river mouth when a main stem or fork of the Skagit would have come straight through the Flats to what is now the Swinomish Channel. The highest probability for any evidence of the past would be on relic surfaces in what was the navigable marsh.

5.0 METHODS

This section provides details on the archival research and fieldwork methods that Equinox Research and Consulting International Inc. (ERCI) employed in support of the Project. The research undertaken for the Project uses best-practice archaeological survey techniques to record the presence or absence of moderate to large archaeological sites, with the expectation that we may also find isolated artifacts or features, or small artifact scatters. When sites or isolated artifacts are discovered ERCI records them on DAHP forms in accordance with the *Washington State Standards for Cultural Resources Reporting*.

5.1 Archival Research

ERCI researchers

- Reviewed site forms and reports of previous archaeology on file at the Department of Archaeology and Historic Preservation (DAHP) in Olympia, Washington
- Reviewed other archaeological reports and related documents on file at the ERCI offices in Mount Vernon, Washington

- Reviewed published information on the precontact, traditional Native American and historic land use in and around the APE
- Reviewed the County Assessor's records
- Reviewed General Land Office historic maps

5.2 Fieldwork

On October 15, 2019, ERCI carried out an archaeological investigation of the APE. Field work was carried out by Paige E. Hawthorne, MA and Courtney M. Strehlow, BA. Sarah Johnson Humphries M.A. and Kelly R. Bush M.A. made site visits to the project area on this day.

Fieldwork entailed subsurface shovel testing and pedestrian survey. The pedestrian survey was carried out while choosing locations for subsurface testing. While surveying, in addition to the possibility of surface artifacts, archaeologists were watching for culturally modified trees and surface features such as cache pits, cultural depressions, wood building foundations and rock cairns. Surface visibility was moderate.

Shovel Tests (ST) consisted of cylindrical pits dug by hand using round-nosed shovels, approximately 50 centimeters (cm) in diameter, ranging up to 100 cm deep. Negative STs were abandoned before reaching the maximum possible depth due to, among other factors, filter fabric. All excavated sediments were passed through ¼-inch mesh hardware cloth shaker screens.

ST location overview photographs were taken, along with photographs of their sedimentary profiles. Once documentation was complete, STs were backfilled with the excavated sediments and the surface restored to its original grade. No samples were removed from the APE. Sediments encountered were characterized and recorded on paper, and activities photographed using digital cameras or phones. ST and other locations were obtained using a Global Positioning System (GPS) high-accuracy receiver. Sedimentary matrix descriptions, shovel test profile descriptions and photo logs are provided in the appendices. Field notes, digital photographs and GIS shape files are stored at ERCI's offices in Mount Vernon, Washington.

6.0 RESULTS

6.1 Pedestrian Survey

The pedestrian survey conducted by ERCI yielded several features of the property such as cement paths, utilities, and a septic field. Ground visibility was moderate and ERCI crew was able to view 100% of the APE.



Figure 18: View West of APE from road entrance shows plum trees, cement paths, and ERCI at ST 7.



Figure 19: View East of APE from ST 7 shows open grass field and plum trees.



Figure 20: View South of northwest area of APE from parking lot shows septic field.

6.2 Subsurface Survey

ERCI dug eight shovel tests (ST) all of which were determined to be negative. Two matrices were identified (see Appendix 1). Matrix 1 (M1) may have been from grading associated with the early phases of residential development on this property. Matrix 2 (M2) also represents a fill event. STs 3, 6, and 7 were in a slightly lower east/west swale and contained M2 from surface to base. STs 6 and 7 were terminated before reaching the maximum depth as we encountered a horizontal layer of filter fabric (permeable fabric) that had been previously laid down, likely related to site preparation in the past.



Figure 21: Sketch Map of APE shows Negative STs and septic drain field.



Figure 22: View West of ST 2.

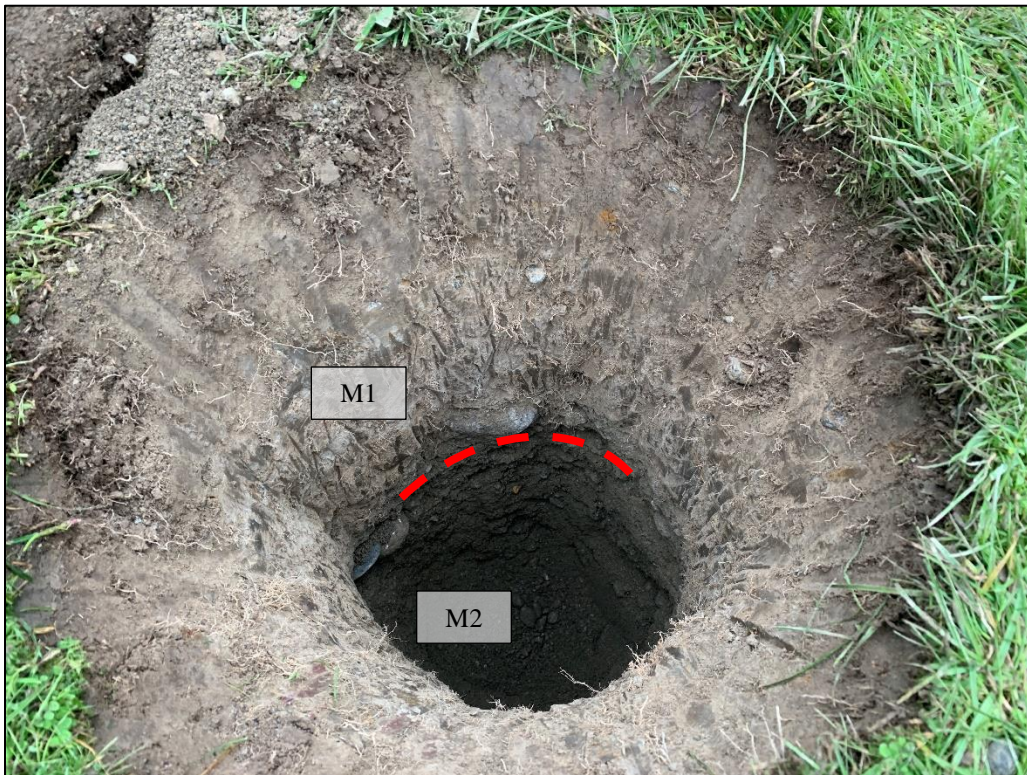


Figure 23: View West of ST 2 shows profile.

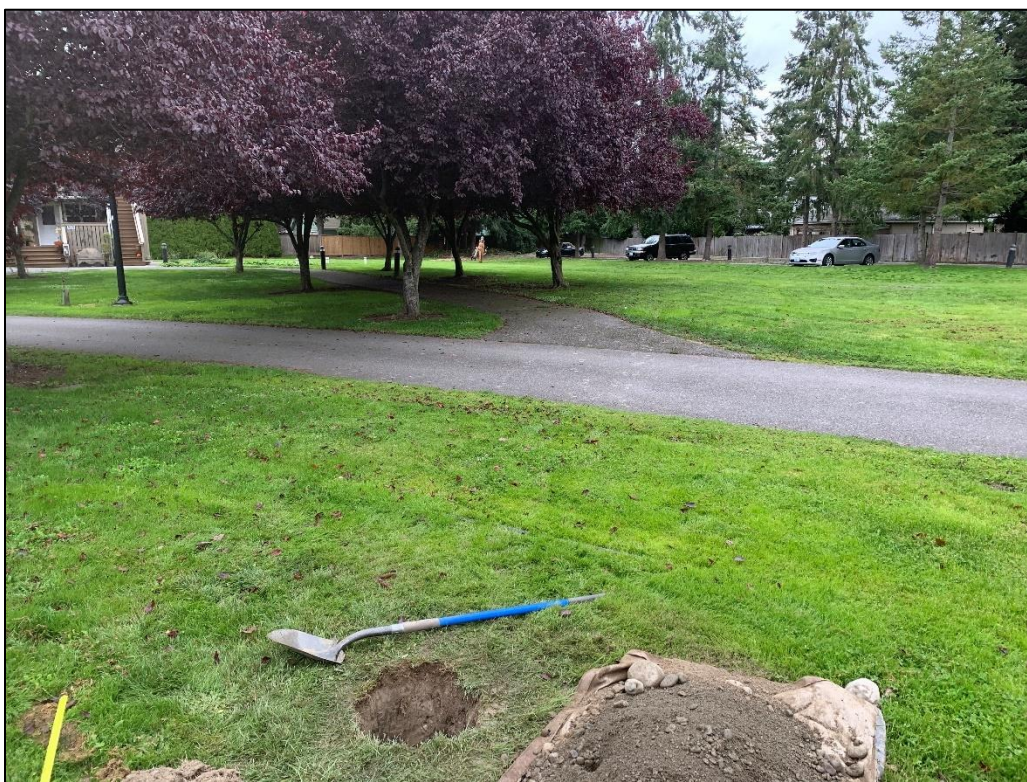


Figure 24: View Northwest of ST 4 shows plum trees and ERCI at ST 3.

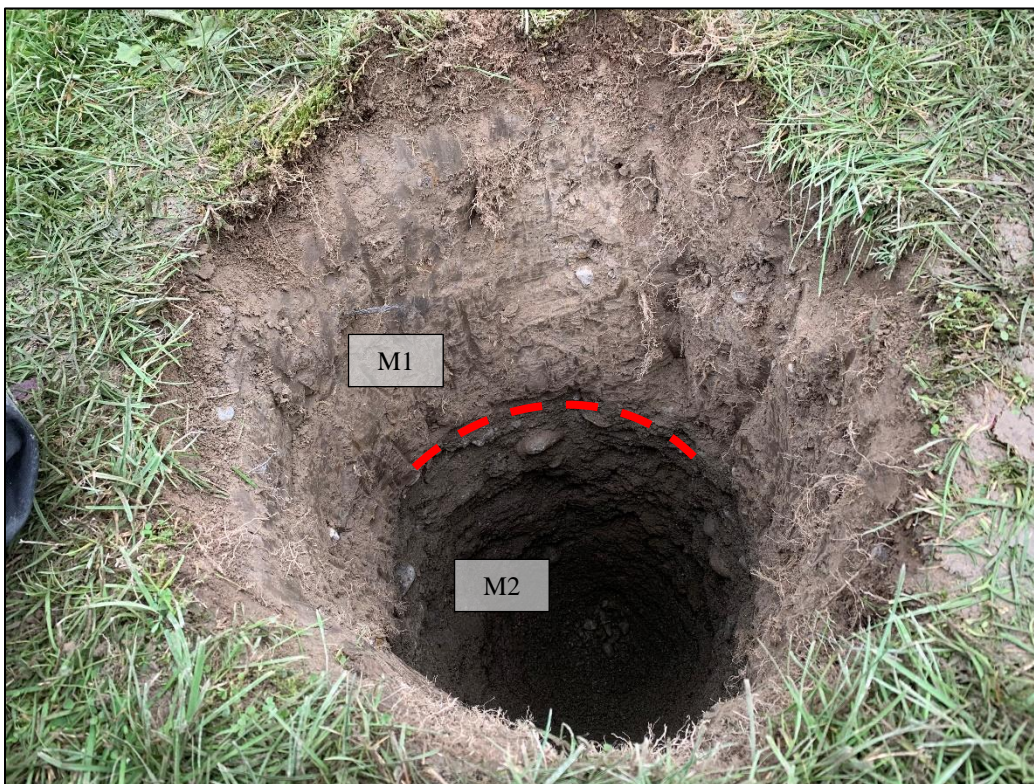


Figure 25: View Northwest of ST4 shows profile.



Figure 26: View South of ST 7 shows profile and filter fabric.



Figure 27: Filter fabric at bottom of ST 7.

Birdsign Consulting provided us with the map below (Figure 28) that had been part of a USACE submittal in 1993 for a less than 6,000 cu. yard fill notification, as part of the original affordable housing project. The material used to fill the wetland was sand, gravel, and rocks (Pettit 1996).

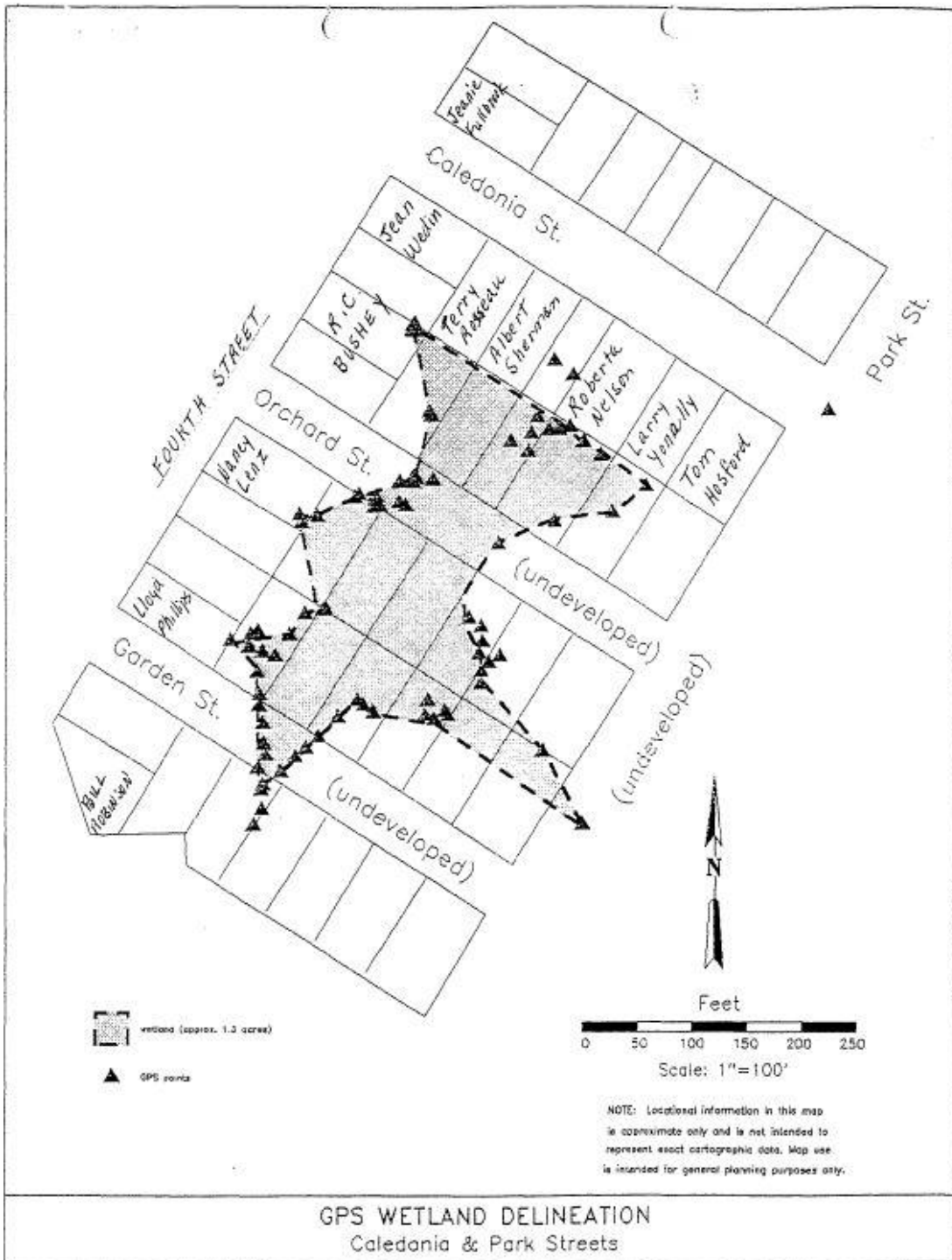


Figure 28: Wetland fill delineation map provide by Birdsign Consulting (Hatch 1993).

6.3 Discussion

The Project Area was filled and graded at least twice in the past and that is apparent in the sediment profiles. If project construction activities encountered an intact buried surface then there is some possibility that artifacts would be preserved there, but we saw no evidence for buried surfaces in our investigation.

7.0 MANAGEMENT RECOMMENDATIONS

No protected cultural resources were identified during our fieldwork. The management recommendations that we are now providing are based on our findings from this initial investigation. We recommend that:

1. The proposed project proceed as planned with a UDP training for all workers on the site by a Professional Archaeologist and copy of the Unanticipated Discoveries Protocol (UDP) to be on site at all times (Appendix 3).
2. In the event that any ground-disturbing activities or other project activities related to this development or in any future development uncover protected cultural material (e.g., bones, shell, stone or antler tools), all work in the immediate vicinity should stop, the area should be secured, and any equipment moved to a safe distance away from the location. The on-site superintendent should then follow the steps specified in the UDP (Appendix 3).
3. In the event that any ground-disturbing activities or other project activities related to this development or in any future development uncover human remains, all work in the immediate vicinity should stop, the area should be secured, and any equipment moved to a safe distance away from the location. The on-site superintendent should then follow the steps specified in the UDP (Appendix 3).

8.0 REFERENCES CITED

- Adamson, Thelma
1969 [1934] *Folk-Tales of the Coast Salish*. Memoirs of the American Folk-lore Society, 27. G.E. Stechert, New York.
- AFSC (American Friends Service Committee)
1970 *Uncommon Controversy: Fishing Rights of the Muckleshoot, Puyallup, and Nisqually Indians*. University of Washington Press, Seattle.
- Allen, Edwin J., Jr.
1976 Intergroup Ties and Exogamy among the Northern Coast Salish. *Northwest Anthropological Research Notes* 10:161–172.
- Ames, Kenneth M.
1995 Chiefly Power on the Northwest Coast. In *Foundations of Social Inequality*, edited by T. Douglas Price and Gary M. Feinman, pp. 155–187. Plenum Press, New York.
2003 The Northwest Coast. *Evolutionary Archaeology* 12:19–33.
2005a Intensification of Food Production on the Northwest Coast and Elsewhere. In *Keeping it Living: Traditions of Plant Use and Cultivation on the Northwest Coast of North America*, edited by Douglas Deur and Nancy J. Turner, pp. 67–100. University of Washington Press, Seattle.
2005b Tempo and Scale in the Evolution of Social Complexity in Western North America: Four Case Studies. In *North American Archaeology*, edited by Timothy R. and Dianda Dipaolo Lored, pp. 46–78. Blackwell Publishing, Oxford.
- Ames, Kenneth M., and H.D.G. Maschner
1999 *Peoples of the Northwest Coast: Their Archaeology and Prehistory*. Thames & Hudson, New York.
- Amoss, Pamela T.
1977a The Power of Secrecy among the Coast Salish. In *The Anthropology of Power: Ethnographic Studies from Asia, Oceania, and the New World*, edited by Raymond D. Fogelson and Richard N. Adams, pp. 131–140. Academic Press, New York.
1977b Strategies of Reorientation: the Contribution of Contemporary Winter Dancing to Coast Salish Identity and Solidarity. *Arctic Anthropology* 14:77–83.
1978 *Coast Salish Spirit Dancing: The Survival of an Ancestral Religion*. University of Washington Press, Seattle.
1981 Coast Salish Elders. In *Other Ways of Growing Old: Anthropological Perspectives*, edited by Pamela T. Amoss and Steven Harrell, pp. 227–248. Stanford University Press, Stanford, California.
- Anundsen, Karl, S.E.B. Abella, E.B. Leopold, M. Stuiver, and S. Turner
1994 Late-glacial and early Holocene sea-level fluctuations in the central Puget Lowland, Washington, inferred from lake sediments. *Quaternary Research* 42:149–161.
- Avey, Mike G.
1991 *Fluted Point Occurrences in Washington State*. Fort Steilacoom Community College, Washington. On file at the Washington State Department of Archaeology and Historic Preservation, Olympia.
- Avey, Mike, and Crista Starwich
1985 *Pierce County Cultural Resource Survey: Archaeology—Phase I*. Fort Steilacoom Community College. On file at the Washington State Department of Archaeology and Historic Preservation, Olympia.
- Bagley, Clarence B.
1915 Journal of Occurrences at Nisqually House, 1833. *Washington Historical Quarterly* 6(3):179–197.
- Ballard, Arthur C.

- 1929 *Mythology of Southern Puget Sound*. University of Washington Publications in Anthropology Volume 3, No. 2. University of Washington Press, Seattle.
- Barnett, Homer Garner
 1938 The Coast Salish of Canada. *American Anthropologist* 40:118–141.
 1955 *The Coast Salish of British Columbia*. University of Oregon Monographs, Studies in Anthropology, No. 4. University of Oregon Press, Eugene.
- Barrett, Helen O'Brien, Anne Summers Carlson, and Margaret Willis (editors)
 1983 *Skagit County Grows Up 1917–1941*. Skagit County Historical Society, La Conner, Washington.
- Batdorf, Carole
 1980 *The Feast is Rich*. Whatcom County Museum, Bellingham, Washington.
- Belcher, William R.
 1986 Coast Salish Social Organization and Economic Redistribution. *Northwest Anthropological Research Notes* 20:203–211.
- Bennett, Lee Ann
 1972 *Effect of White Contact on the Lower Skagit Indians*. Washington Archaeological Society, Occasional Paper No. 3. Washington Archaeological Society, Seattle.
- Bierwert, Crisca
 1990 *Lushootseed Texts: An Introduction to Puget Salish Narrative Aesthetics*. Smithsonian Press, Washington D.C.
 1993 *New Voices in Native American Literary Criticism*. Smithsonian Institution Press, Washington, D.C.
 1999 *Brushed by Cedar, Living by the River: Coast Salish Figures of Power*. University of Arizona Press, Tucson.
- BLM GLO (Bureau of Land Management General Land Office)
 2019 Accessions in Sections 25, 36 Township 34 North, Range 2 East, Willamette Meridian. Electronic document, https://gloreports.blm.gov/results/default.aspx?searchCriteria=type=patent|st=WA|cty=|twp_nr=34|twp_dir=N|rng_nr=2|rng_dir=E|sec=36|sp=true|sw=true|sadv=false#resultsTabIndex=0, accessed May 20, 2019.
- Blukis Onat, Astrida R.
 1976 *State of Washington Archaeological Site Inventory Form (45SK101)*. On file at the Washington State Department of Archaeology and Historic Preservation, Olympia.
 1977 *Washington State University Master Site File (45DT11)*. On file at the Washington State Department of Archaeology and Historic Preservation, Olympia.
 1980 Skwikwikwab: A Methodological Study of a Prehistoric Puget Sound Site. Unpublished Ph.D. dissertation, Department of Anthropology, Washington State University, Pullman.
 1981 *State of Washington Archaeological Site Inventory Form (45SK147)*. On file at the Washington State Department of Archaeology and Historic Preservation, Olympia.
 1984 *Cultural Resources Report for the two units on the Swinomish Reservation*. On file at the Washington State Department of Archaeology and Historic Preservation, Olympia.
 1987 *Identification of Prehistoric Archaeological Resources in the Northern Puget Sound Study Unit. Resource Protection Planning Process*. Draft report submitted to Washington State Office of Archaeology and Historic Preservation, Olympia.
- Blukis Onat, A. R., and J. Hollenbeck (editors)
 1981 *Inventory of Native American Religious Use, Practices, Localities and Resources. Study Area on the Mt. Baker-Snoqualmie National Forest, Washington State*. Mt. Baker-Snoqualmie National Forest, Seattle, Washington. On file at the Washington State Department of Archaeology and Historic Preservation, Olympia.
- Blukis Onat, Astrida R., Lee A. Bennett, and Jan L. Hollenbeck

- 1980 *Cultural Resource Overview and Sample Survey of the Skagit Wild and Scenic River: Study Area on the Mt. Baker-Snoqualmie National Forest, Washington State*. 3 volumes with appendices. Report prepared for the Mt. Baker-Snoqualmie National Forest, Mountlake Terrace, Washington. Institute of Cooperative Research. On file at Washington State Department of Archaeology and Historic Preservation, Olympia.
- Blukis Onat, Astrida, and Roger Kiers
 2007a *Ethnohistoric and Geoarchaeological Study of the SR 520 Corridor and Archaeological Field Investigations in the SR 520 Bridge Replacement and HOV Project Including the Pacific Interchange and Second Montlake Bridge Option, King County, Washington*. Submitted to Washington State Department of Transportation, Seattle, Washington. BOAS, Inc., Seattle, Washington. On file at Washington State Department of Archaeology and Historic Preservation, Olympia.
- Borden, Charles
 1950 Notes on the Prehistory of the Southern Northwest Coast. *British Columbia Historical Quarterly* 14:241–246.
 1951 Facts and Problems of Northwest Coast Prehistory. *Anthropology in British Columbia* 2:35–37.
 1960 *DjRi3, an Early Site in the Fraser Canyon, British Columbia*. National Museum of Canada Contributions to Anthropology, Bulletin 162. National Museums of Canada, Ottawa.
 1962 West Coast Crossties with Alaska. In *Prehistoric Cultural Relations between the Arctic and Temperate Zones of North America*, edited by J. M. Campbell, pp. 9–19. Arctic Institute of North America, Technical Paper 11. Arctic Institute of North America, Montreal.
 1968 Prehistory of the Lower Mainland. In *Lower Fraser Valley: Evolution of a Cultural Landscape*, edited by A.H. Siemens, pp. 9–26. British Columbia Geographical Series 9. Tantalus Research, Vancouver.
 1975 *Origins and Development of Early Northwest Coast Culture to about 3000 B.C.* National Museum of Man Mercury Series, Archaeological Survey of Canada Paper No. 45. National Museum of Man, Ottawa.
- Bourasaw, Noel V.
 2004 The Calhoun brothers of LaConner, Farmer Sam, the first Swinomish settler, Farmer Tom and Doctor George, and Michael Sullivan, who settled on the flats the same time as Sam. Electronic document, <http://www.skagitriverjournal.com/WestCounty/LaConner/Pioneers/Pre1890/Calhoun/Calhoun01-FirstwSullivan.html>, accessed July 6, 2018.
- Boxberger, Daniel L.
 1986 *Resource Allocation and Control on the Lummi Indian Reservation: A Century of Conflict and Change in the Salmon Fishery*. PhD dissertation, Department of Anthropology and Sociology, University of British Columbia, Vancouver.
 1996 *Ethnographic Overview and Assessment of North Cascades National Park Service Complex*. North Cascades National Park Service Complex, National Park Service, Cultural Resources, Seattle, Washington.
- Boyd, Robert T.
 1998 *The Coming of Spirit and Pestilence, Introduced Diseases and Population Decline among Northwest Coast Indians, 1774–1874*. University of Washington Press, Seattle.
 1999 *Indians, Fire, and the Land in the Pacific Northwest*. Oregon State University Press, Corvallis.
- Bruseh, Nels
 1926 *Indian Stories and Legends of the Stillaguamish and Allied Tribes*. Publisher not identified, Arlington, Washington.

- Bryan, Alan L.
 1955 *An Intensive Archaeological Reconnaissance in the Northern Puget Sound Region*. Unpublished M.A. Thesis, Department of Anthropology, University of Washington, Seattle.
 1963 *An Archaeological Survey of the Northern Puget Sound*. Occasional Papers of the Idaho State University Museum No. 11. Idaho State Museum, Pocatello.
- Bryan, Alan L., and Ralph B. Lurman
 1953a *State of Washington Archaeological Site Inventory Form (45SK30)*. On file at the Washington State Department of Archaeology and Historic Preservation, Olympia.
 1953b *State of Washington Archaeological Site Inventory Form (45SK31)*. On file at the Washington State Department of Archaeology and Historic Preservation, Olympia.
- Bryan, A.R.
 1953a *Seattle Community College Archaeological Site Survey Form (45SK28)*. On file at the Washington State Department of Archaeology and Historic Preservation, Olympia.
 1953b *Seattle Community College Archaeological Site Survey Form (45SK29)*. On file at the Washington State Department of Archaeology and Historic Preservation, Olympia.
- Burley, David V.
 1980 *Marpole: Anthropological Reconstruction of a Prehistoric Northwest Coast Culture Type*. Publication No. 8. Simon Fraser University, Department of Archaeology, Burnaby, British Columbia.
- Burtchard, Greg C.
 2007 Holocene Subsistence and Settlement Patterns: Mount Rainier and the Montane Pacific Northwest. *Archaeology in Washington* 13:3–44.
- Burtchard, Greg C. (with contributions by Stephen C. Hamilton and Richard H. McClure, Jr.)
 2003 [1998] *Environment, Prehistory & Archaeology of Mount Rainier National Park*, Washington, prepared for United States Department of the Interior National Park Service, Columbia Cascades System Support Office, Seattle, Washington. International Archaeological Research Institute, Inc., Honolulu, Hawai‘i. Electronic document, <http://www.npshistory.com/publications/mora/environment-prehistory-archaeology.pdf>, accessed July 6, 2018.
- Bush, Kelly R.
 2004a *Archaeological Investigation Report: Swinomish Gymnasium Expansion Project, La Conner, Washington*. On file at the Washington State Department of Archaeology and Historic Preservation, Olympia.
 2004b *Archaeological Addendum Letter: Swinomish Gymnasium Expansion Project, La Conner, Washington*. On file at the Washington State Department of Archaeology and Historic Preservation, Olympia.
 2006 *Letter to Brandon Haugness Re: Monitoring excavation for the Swinomish Indian Tribal Community gas pipeline installation*. On file at the Washington State Department of Archaeology and Historic Preservation, Olympia.
 2008a *Archaeological Investigation Report: McGlenn Fill Removal/marsh Restoration Project Site*. On file at the Washington State Department of Archaeology and Historic Preservation, Olympia.
 2008b *Archaeological Investigation Report: Rainbow Fill Removal/Marsh Restoration Project Site*. On file at the Washington State Department of Archaeology and Historic Preservation, Olympia.
 2009 *Archaeological Investigation Report: Dodge Slough, Drainage and Irrigation Improvement District 22*. On file at the Washington State Department of Archaeology and Historic Preservation, Olympia.
 2010 *Archaeological Letter Report: Removal of the Old Willup House more commonly known as Old Stubby’s house, Swinomish Reservation, Skagit County, Washington*. On file at the Washington State Department of Archaeology and Historic Preservation, Olympia.

- 2011a *Letter to Ed Knight Re: Letter Report for the Swinomish Indian Tribal Community Village Store Project, Skagit County, Washington*. On file at the Washington State Department of Archaeology and Historic Preservation, Olympia.
- 2011b *Archaeological Investigation Report: South Second Street Improvements*. On file at the Washington State Department of Archaeology and Historic Preservation, Olympia.
- 2013 *Archaeological Investigation Report: La Conner School District, La Conner, Washington*. On file at the Washington State Department of Archaeology and Historic Preservation, Olympia.
- Bush, Kelly R., and Tamela Smart
2008 *Archaeological Investigation Report: Rainbow Fill Removal/Marsh Restoration Project Site, Skagit County, Washington*. On file at the Washington State Department of Archaeology and Historic Preservation, Olympia.
- Butler, B.R.
1961 *The Old Cordilleran Culture in the Pacific Northwest*. Occasional Papers of the Idaho State College Museum 5. Idaho State College, Pocatello.
- Butler, Virginia, and Sarah Campbell
2004 Resource Intensification and Resource Depression in the Pacific Northwest of North America: A Zooarchaeological Review. *Journal of World Prehistory* 18:327–405.
- Campbell, Hedlin and Serena Campbell
2009 *Washington State Heritage Barn Register Form (SK423)*. On file at the Washington State Department of Archaeology and Historic Preservation, Olympia.
- Campbell, Sarah K.
1984 *Research Design for the Chief Joseph Dam Cultural Resources Project*. Prepared for the United States Army Corps of Engineers. University of Washington Institute for Environmental Studies Office of Public Archaeology, University of Washington, Seattle. On file at the Washington State Department of Archaeology and Historic Preservation, Olympia.
1991 *Postcolumbian Culture History in the Northern Columbian Plateau A.D. 1500–1900*. Taylor & Francis, New York.
- Carlson, Roy L.
1960 Chronology and Culture Change in the San Juan Islands, Washington. *American Antiquity* 25:562–586.
1990 Cultural Antecedents. In *Northwest Coast*, edited by Wayne Suttles, pp. 60–69. Handbook of North American Indians, Vol. 7. Smithsonian Institution, Washington, D.C.
- Carlson, Roy, and Luke R. Dalla Bona (editors)
1996 *Early Human Occupation in British Columbia*. University of British Columbia Press, Vancouver.
- Carlson, R.L., and P.M. Hobler
1993 The Pender Canal Excavations and the Development of Coast Salish Culture. *BC Studies* 99:25–52.
- Carrilho, Yonara
2011 *State of Washington Archaeological Site Inventory Form (45SK448)*. On file at the Washington State Department of Archaeology and Historic Preservation, Olympia.
- CBC/Radio-Canada
2015 Footprints found on B.C.'s Calvert Island could be oldest in North America: Radiocarbon dating shows footprints are 13,200 years old. Electronic document, <http://www.cbc.ca/news/technology/footprints-found-on-b-c-s-calvert-island-could-be-oldest-in-north-america-1.3123779>, accessed July 6, 2018.
- Chatters, James C., James W. Brown, Steven Hackenberger, Patrick McCutcheon, and Jonathan Alder
2017 Calcined Bone as a Reliable Medium for Radiocarbon Dating: A Test Using Paired North American Samples. *American Antiquity* 82(3):593–608.

- Chatters, James C., Jason B. Cooper, Philippe D. LeTourneau, and Lara C. Rooke
2011 *Understanding Olcott: Data Recovery at Sites 45SN28 and 45SN303, Snohomish County, Washington*. Prepared for Granite Falls Alternate Route Project, Snohomish County Department of Public Works Everett, Washington. On file at Washington State Department of Archaeology and Historic Preservation, Olympia.
- Clague, John J.
1983 Glacio-isostatic effects of the Cordilleran ice sheet, British Columbia, Canada. In *Shorelines and Isostasy*, edited by D.E. Smith and A.G. Dawson, pp. 321-343. Academic Press, London.
- Collins, June McCormick
1950 Growth Class Distinctions and Political Authority Among the Skagit Indians During the Contact Period. *American Anthropologist* 52:331-342.
1952 A Mythological Attitude toward Animals among Salish-Speaking Indians. *Journal of American Folklore* 65:353-359.
1974a The Influence of White Contact on Class Distinctions and Political Authority Among the Indians of Northern Puget Sound. In *Coast Salish and Western Washington Indians, Volume II*, edited by D.A. Horr, pp. 89-204. Garland, New York.
1974b [1946] A Study of Religious Change among the Skagit Indians of Western Washington. In *Coast Salish and Western Washington Indians, Volume IV*, edited by D.A. Horr, pp. 619-675. Garland, New York.
1974c *Valley of the Spirits: The Upper Skagit Indians of Western Washington*. University of Washington Press, Seattle.
1980 Report on the use of the Skagit River, including village locations, by the Upper Skagit Indians. In *Cultural Resource Overview and Sample Survey of the Skagit Wild and Scenic River Study Area on the Mt. Baker-Snoqualmie National Forest, Washington State, Volume 2*, by Astrida R. Blukis Onat, Lee A. Bennett, and Jan L. Hollenbeck, pp. 2-19. Prepared by the Institute for Cooperative Research for the Mt. Baker-Snoqualmie National Forest. On file at the Washington State Department of Archaeology and Historic Preservation, Olympia.
- Conca, D.
1985 *State of Washington Archaeological Site Inventory Form (45SK30)*. On file at the Washington State Department of Archaeology and Historic Preservation, Olympia.
- Croes, Dale R.
1977 *National Register of Historic Places Inventory Nomination Form (45CA213)*. On file at the Washington State Department of Archaeology and Historic Preservation, Olympia.
1995 *The Hoko River Archaeological Site Complex: The Wet/Dry Site (45CA213), 3,000-1,700 B.P.* Washington State University Press, Pullman.
- Curtis, Edward S.
1913 *The Salishan tribes of the coast*. The North American Indian (1907-1930) Volume 9, Plimpton Press, Norwood, Massachusetts.
- DAHP (Department of Archaeology and Historic Preservation)
2007 *Cemetery Report-Swinomish Reservation Cemetery*. On file at the Washington State Department of Archaeology and Historic Preservation, Olympia.
2019 *Cemetery Report (SK00390)*. Electronic Document, accessed October 7, 2019. On file at the Washington State Department of Archaeology and Historic Preservation, Olympia.
- Daugherty, R.D., and R. Fryxell
1967 Archaeological, geochronological, and ecological investigations of the Ozette Village Site Complex on the Northwest Coast of Washington. Manuscript on file, Department of Anthropology, Washington State University, Pullman.
- Dewhirst, John
1976 Coast Salish Summer Festivals: Rituals for Upgrading Social Identity. *Anthropologica* 28:231-275.
- Dragovich, Joe D., D.T. McKay Jr, D.P. Dethier, J.E. Beget.

- 2000a Holocene Glacier Peak Lahar deposits in the Lower Skagit River Valley, Washington. *Washington Geology* 28(1–2):19–21, 59.
- Dragovich, Joe D., Minda L. Troost, David K. Norman, Garth Anderson, Jason Cass, Lea A. Gilbertson, and Donald T. McKay, Jr.
2000b *Geologic map of the Anacortes South and La Conner 7.5-minute Quadrangles, Skagit and Island Counties, Washington*. Open File Report 2000-6. Washington Division of Geology and Earth Resources, Olympia.
- Duncan, Mary Ann
1977 *A Report of Archaeological Investigation within Camano Island State Park*. Office of Public Archaeology, Reconnaissance Report No. 14, University of Washington, Seattle.
- Easterbrook, Donald J.
1963 Late Pleistocene Glacial Events and Relative Sea Level Changes in the Northern Puget Lowland, Washington. *Geological Society of America Bulletin* 74:1465–1484.
1986 Stratigraphy and chronology of quaternary deposits of the Puget Lowland and Olympic Mountains of Washington and the Cascade Mountains of Washington and Oregon. *Quaternary Science Reviews* 5:145–159.
- Eells, Myron, and George P. Castile
1985 *The Indians of Puget Sound: The Notebooks of Myron Eells*. University of Washington Press, Seattle.
- Elmendorf, William W.
1971 Coast Salish Status Ranking and Intergroup Ties. *Southwestern Journal of Anthropological Research* Vol. 27:353–380.
1974 Structure of Twana Culture. In *Coast Salish and Western Washington Indians*, Volume IV, edited by D.A. Horr, pp. 27–618. Garland, New York.
1993 *Twana Narratives: Native Historical Accounts of a Coast Salish Culture*. University of Washington Press, Seattle.
- Erlandson, Jon M., Mark A. Tveskov, and R. Scott Byram
1998 The Development of Maritime Adaptations on the Southern Northwest Coast of North America. *Arctic Anthropology* 35(1):6–22.
- Fladmark, Knut R.
1975 *Paleoecological Model for Northwest Coast Prehistory*. National Museum of Man, Mercury Series No 43. National Museum of Man, Ottawa.
1982 An Introduction to the Prehistory of British Columbia. *Canadian Journal of Archaeology* 6:95–156.
- Franklin, Jerry F., and C.T. Dyrness
1988 *Natural Vegetation of Oregon and Washington*. Oregon State University Press, Corvallis.
- Fuller, J.
1970 *University of Washington Site Survey Form (SK55)*. On file at the Washington State Department of Archaeology and Historic Preservation, Olympia.
- Gargett, Robert H.
2016 *Archaeological Investigation Report: Town of La Conner Sullivan Slough Flood Protection Control Structure Project, Skagit County, Washington*. Submitted to Town of La Conner. Equinox Research and Consulting, Inc. On file at Washington State Department of Archaeology and Historic Preservation, Olympia.
- Gargett, Robert H. and Michelle North
2016a *Archaeological Investigation Report: Town of La Conner N 3rd Street Improvement Project, La Conner, Skagit County, Washington*. Submitted to Town of La Conner. Equinox Research and Consulting, Inc. On file at Washington State Department of Archaeology and Historic Preservation, Olympia.
2016b *Archaeological Monitoring Report: Tallawhalt Recovery House Project, Skagit County, Washington*. Submitted to Swinomish Indian Tribal Community Public Works. Equinox

- Research and Consulting, Inc. On file at Washington State Department of Archaeology and Historic Preservation, Olympia.
- George, Oscar
 2001 *National Register of Historic Places Registration Form (SK281)*. On file at the Washington State Department of Archaeology and Historic Preservation, Olympia.
- Grabert, Garland F.
 1968 *North-Central Washington Prehistory: a final Report on Salvage Archaeology in the Wells Reservoir*. Reports in archaeology, No. 1. University of Washington Department of Anthropology, Seattle.
- Greengo, Robert E.
 1983 *Prehistoric Places on the Southern Northwest Coast*. Thomas Burke Memorial Washington state Museum Research Report Number 4, University of Washington, Seattle.
- Greengo, R.E., and R. Houston
 1970 *Excavations at the Marymoor Site*. Reports in Archaeology No 4, Department of Anthropology, University of Washington, Seattle.
- Grier, Colin, Patrick Dolan, Kelly Derr, and Eric McLay
 2009 Assessing Sea Level Changes in the Southern Gulf Islands of British Columbia Using Archaeological Data from Coastal Spit Locations. *Canadian Journal of Archaeology* 33:254–280.
- Guilmet, George M., Robert T. Boyd, David L. Whited, and Nile Thompson
 1991 The Legacy of Introduced Disease: The Southern Coast Salish. *American Indian Culture and Research Journal* 15(4):1–32.
- Gunther, Erna
 1928 *A Further Analysis of the First Salmon Ceremony*. University of Washington publications in anthropology, Volume 2, No. 5. University of Washington Press, Seattle.
 1945 *Ethnobotany of Western Washington*. University of Washington Press, Seattle.
- Hale, James
 1991 *Cultural Resource Reconnaissance Report for East Baker Lake Hiking Trail Extension, CR05-91-20*. Report on file at the Mt. Baker-Snoqualmie National Forest, Mt. Baker Ranger District, Sedro Woolley, Washington.
- Haerberlin, Hermann
 1924 Mythology of Puget Sound. *Journal of American Folk-Lore* 37:137–438.
- Haerberlin, Hermann, and Erna Gunther
 1930 *Indians of Puget Sound*. University of Washington Publications in Anthropology Volume 4, No. 1. University of Washington Press, Seattle.
- Hansen, Kenneth C.
 1981 Samish. In *Inventory of Native American Religious Use, Practices, Localities and Resources: Study Area on the Mt. Baker–Snoqualmie National Forest, Washington State*, edited by Astrida R. Blukis Onat and Jan L. Hollenbeck, pp. 181–212. Report prepared for Mt. Baker–Snoqualmie National Forest, Seattle, Washington. Institute of Cooperative Research, P.O. Box 20275, Broadway Station, Seattle, Washington 98102.
- Harmon, Alexandra
 1998 *Indians in the Making: Ethnic Relations and Indian Identities in the Puget Sound*. University of California Press, Berkeley.
- Harris, Cole
 1994 Voices of Disaster: Smallpox around the Strait of Georgia in 1782. *Ethnohistory* 41:591–626.
- Hart, Ross F.
 1972 *National Register of Historic Places Registration Form (DT12)*. On file at the Washington State Department of Archaeology and Historic Preservation, Olympia.
- Hatch, Marshall

- 1993 *Application for Department of the Army Permit (33 CFR 325)*. On file at Town of La Conner.
- Hayes, Derek
1999 *Historical Atlas of the Pacific Northwest: Maps of Exploration and Discovery*. Sasquatch Books, Seattle.
- Hearne, Carol, and Jan L. Hollenbeck
1996 *Cultural Resource Reconnaissance Report. Mt. Baker-Snoqualmie National Forest CRR No. (FY) CR05-92-026*. On file at Washington State Department of Archaeology and Historic Preservation, Olympia.
- Hebda, R.J., and R.W. Mathewes
1984 Holocene History of Cedar and Native Indian Cultures of the North American Pacific Coast. *Science* 225:711–713.
- Heusser, Calvin J.
1983 Vegetational History of the Northwestern U.S. Including Alaska. In *Late Quaternary Environments of the United States. Vol. 1: The Late Pleistocene*, edited by H.E. Wright Jr., pp. 239–258. University of Minnesota Press, Minneapolis.
- Hollenbeck, Jan L.
1987 *A Cultural Resource Overview: Prehistory, Ethnography and History. Mt. Baker–Snoqualmie National Forest*. Prepared for the United States Department of Agriculture, Forest Service, Pacific Northwest Region, Portland, Oregon. On file at the Washington State Department of Archaeology and Historic Preservation, Olympia.
- Hollenbeck, Jan L., and Susan L. Carter
1986 *A Cultural Resource Overview: Prehistory and Ethnography Wenatchee National Forest*. United States Department of Agriculture Forest Service Pacific Northwest Region. On file at the Washington State Department of Archaeology and Historic Preservation, Olympia.
- Holliday, Vance T.
1992 *Soils in Archaeology*. Smithsonian Institution Press, Washington, D.C.
- Hood, Michael
2004 La Conner—Thumbnail History HistoryLink.org Essay 5655. Electronic document, http://www.historylink.org/index.cfm?DisplayPage=output.cfm&File_Id=5655, accessed July 6, 2018.
- Howay, F.W.
1918 The Dog's Hair Blankets of the Coast Salish. *Pacific Northwest Quarterly* 9(2):83–92.
- Jeffcott, Percival Robert
1949 *Nooksack Tales and Trails*. Sincyrly Ours Publishing, Bellingham, Washington.
- Jenkins, Will D.
1984 *The Last Frontier in the North Cascades: Tales of the Wild Upper Skagit*. Skagit County Historical Society, La Conner, Washington.
- Jenson, Sybil, James Dunlap, Gretchen McCauley, Mary Jenson Trust, and Thomas Jenson Trust
2008 *Washington State Heritage Barn Register Form (SK361)*. On file at the Washington State Department of Archaeology and Historic Preservation, Olympia.
- Jordan, Ray
1974 *Yarns of the Skagit Country*. The Printers, Everett, Washington.
- Jorgensen, Joseph G.
1969 *Salish Language and Culture, a Statistical Analysis of Internal Relationships, History and Evolution*. Language Science Monographs No. 3. Indiana University, Bloomington.
- Juell, Kenneth
2006 *Archaeological Site Assessment of Sound Transit's Souder: Everett to Seattle Commuter Rail System, King and Snohomish Counties, Washington*. Prepared for Herrera Environmental Consultants and Sound Transit, Seattle, WA. NWAA, Inc., Seattle. On file at the Washington State Department of Archaeology and Historic Preservation, Olympia.

- Kelsey, Harvey M., Brian Sherrod, Samuel Y. Johnson, and Shawn V. Dadisman
2004 Land-level changes from a late Holocene earthquake in the northern Puget Lowland, Washington. *Geology* 32:469–472.
- Kew, John Edward Michael
1972 *Coast Salish Ceremonial Life: Status and Identity in a Modern Village*. PhD dissertation, Department of Anthropology, University of Washington, Seattle.
1990 Central and Southern Coast Salish Ceremonies Since 1900. In *Northwest Coast*, edited by Wayne Suttles, pp. 476–480. Handbook of North American Indians, Vol. 7. Smithsonian Institution, Washington, DC.
- Kidd, Robert Stuart
1964 A Synthesis of Western Washington Prehistory from the Perspective of Three Occupation Sites. Unpublished Master's Thesis, Department of Anthropology, University of Washington, Seattle.
- Kiers, R.
2014 Appendix G: Luminescence Dating of Fire-modified Rock from 45SN417, Granite Falls, Snohomish County, Washington. In *Final Report of Archaeological Investigations for the Woodhaven Site (45SN417), Granite Falls, Snohomish County, Washington*. Report prepared for Woodhaven Estates, LLC, by Garth Baldwin and Jennifer Chambers, pp. 224–228. On file at Washington State Department of Archaeology and Historic Preservation, Olympia.
- King, Arden Ross
1950 *Cattle Point, a Stratified Site in the Southern Northwest Coast Region*. Society for American Archaeology Memoirs No. 7. Society for American Archaeology, Menasha, Wisconsin.
- Kopperl, Robert E. (editor)
2016 *Results of Data Recovery at the Bear Creek Site (45KI839) King County, Washington*. On file at the Washington State Department of Archaeology and Historic Preservation, Olympia.
- Kopperl, Robert, Charles Hodges, Christian Miss, Johonna Shea, and Alicia Spooner
2016 *Archaeology of King County, Washington: A Context Statement for Native American Archaeological Resources*. SWCA Environmental Consultants, Seattle. Submitted to the King County, Washington, Historic Preservation Program. On file at Washington State Department of Archaeology and Historic Preservation, Olympia.
- Lane, Robert and Barbara Lane
1977 *Indians and Indian Fisheries of the Skagit River System*. Report prepared for the Skagit River System Cooperative, 11426 Moorage Way, La Conner, WA 98257-0368. A copy of the manuscript is on file at ERCI in Mount Vernon, Washington.
- Larsen, Susan
2018 *Archaeological Investigation Report: State Street (North 3rd Street to North 6th Street) Sidewalk Replacement Project, La Conner, Washington*. On file at the Washington State Department of Archaeology and Historic Preservation, Olympia.
- Larsen, Susan C. and Robert H. Gargett
2018a *Archaeological Investigation Report: State Street (North 3rd Street to North 6th Street) Sidewalk Replacement Project, La Conner, Washington*. Submitted to Town of La Conner. Equinox Research and Consulting, Inc. On file at Washington State Department of Archaeology and Historic Preservation, Olympia.
2018b *Archaeological Investigation Report: La Conner Waterfront Park Phase 3 Shoreline Bank Armor Restoration Project, La Conner, Skagit County, Washington*. Submitted to Town of La Conner. Equinox Research and Consulting, Inc. On file at Washington State Department of Archaeology and Historic Preservation, Olympia.
- Lewarch, Dennis E.
1979 Summary Cultural Resources Overview of the Cedar and Tolt River Watersheds. Office of Public Archaeology, Institute for Environmental Studies, University of Washington,

- Reconnaissance Report No. 24, Seattle. On file at the Washington State Department of Archaeology and Historic Preservation, Olympia.
- Lewarch, Dennis E., Gretchen A. Kaehler, and Lynn L. Larson
 2005 *FINAL: Seattle Monorail Project Green Line, Seattle, King County, Washington Archaeological Resources Treatment and Monitoring Plans*. Submitted to Seattle Monorail Project, Seattle, WA. LAAS Technical Report #2004-18. Larson Anthropological Archaeological Services Limited, Gig Harbor, Washington. On file at the Washington State Department of Archaeology and Historic Preservation, Olympia.
- Lewarch, Dennis E., Gretchen A. Kaehler, Elizabeth C. Reetz, Nichole Gillis, and Lynn L. Larson
 2006 *Brightwater Regional Wastewater Treatment System King County and Snohomish County, Washington Archaeological Resources Treatment and Monitoring Plans*. Prepared for King County Department of Natural Resources and Parks Wastewater Treatment Division. Larson Anthropological Archaeological Services Limited, Gig Harbor, Washington.
- Lewarch, Dennis E., and Lynn L. Larson
 2003 *Revised Draft Historic Context Statement Hunter-Fisher-Gatherer Resources King County Cultural Resources Protection Project*. Larson Anthropological Archaeological Services Limited, Gig Harbor, Washington. On file at the Washington State Department of Archaeology and Historic Preservation, Olympia.
- Lewarch, Dennis E., Lynn L. Larson, Elizabeth C. Reetz, Nichole Gillis, Donald E. Tatum, Sarah L. Sterling, Gretchen A. Kaehler, Hayley E. Kanipe, Stephanie E. Trudel, Steven J. Greenawalt, and Katherine Vaughn
 2005 *Fieldwork Status Report, Data Recovery Excavation and Archaeological Construction Monitoring at the Tse-whit-zen Site (45CA523), Clallam County, Washington*. Larson Anthropological Archaeological Services. Submitted to Washington State Department of Transportation, Olympic Region, Tumwater. On file at Washington State Department of Archaeology and Historic Preservation, Olympia.
- Mack, C.A., James C. Chatters, and Anna M. Prentiss
 2010 *Archaeological Data Recovery at the Beech Creek Site (45LE415), Gifford Pinchot National Forest, Washington*. Report prepared for United States Department of Agriculture, Forest Service, Pacific Northwest Region, Heritage Program, Gifford Pinchot National Forest. On file at Washington State Department of Archaeology and Historic Preservation, Olympia.
- Majors, Harry M.
 1984 First Crossing of the Pickett Range. *Northwest Discovery* 5(22):88–168.
- Mansfield, Emily
 1993 Balance and Harmony: Peacemaking in Coast Salish Tribes of the Pacific Northwest. *Meditation Quarterly* 10(4):339–353.
- Markert, J.L., and J.H. Biggane
 2006 *Archaeology Predictive Model for Hood Canal Washington and Update to South-Central Archaeology Predictive Model*. GeoEngineers, Inc. On file at the Washington State Department of Archaeology and Historic Preservation, Olympia.
- Matson, R.G. (editor)
 1976 *The Glenrose Cannery Site*. Mercury Series, National Museum of Man, Archaeological Survey of Canada Paper No. 52. National Museums of Canada, Ottawa.
 2010 *The Crescent Beach Site and the Place of the Locarno Beach Phase*. Laboratory of Archaeology, University of British Columbia. Electronic document, <http://anth.sites.olt.ubc.ca/files/2013/05/FrontMatter.pdf>, accessed July 6, 2018.
- Matson, R.G., and Gary Coupland
 1995 *The Prehistory of the Northwest Coast*. Academic Press, San Diego.
- Matson, R.G., Gary Coupland, and Quentin Mackie (editors)
 2003 *Emerging from the Mist: Studies in Northwest Coast Culture History*. Pacific Rim Archaeology. UBC Press, Vancouver and Toronto.

- Mattson, John L.
 1961 *University of Washington Site Survey Form (SK77)*. On file at the Washington State Department of Archaeology and Historic Preservation, Olympia.
 1971 *A Contribution to Skagit Prehistory*. Master's thesis, Department of Anthropology, Washington State University. Pullman.
 1989 *Puget Sound prehistory: postglacial adaptations in the Puget Sound basin with archaeological implications for a solution to the "Cascade Problem."* Ph.D. dissertation, University of North Carolina, Chapel Hill. U.M.I. Dissertation Information Service, Ann Arbor, Michigan.
- McLaren, Duncan, Daryl Fedje, Murray B. Hay, Quentin Mackie, Ian J. Walker, Dan H. Shugard, Jordan B.R. Eamerd, Olav B. Liane, and Christina Neudorf
 2014 A post-glacial sea level hinge on the central Pacific coast of Canada. *Quaternary Science Reviews* 97:148–169.
- Meany, Edmond S.
 1957 [1907] *Vancouver's Discovery of Puget Sound*. Binfords & Mort, Portland, Oregon.
- Meeker, Ezra
 1905 *Pioneer Reminiscences of Puget Sound*. Lowman & Hanford, Seattle, Washington.
- Meltzer, D.J.
 2004 Peopling of North America. In *The Quaternary Period in the United States*, edited by A.R. Gillespie, S.C. Porter, and B.F. Atwater, pp. 505–563. Developments in Quaternary Science. Elsevier, Seattle, Washington.
- Meltzer, D.J., and R.C. Dunnell
 1987 Fluted Points from the Pacific Northwest. *Current Research in the Pleistocene* 4:64-67.
- Mierendorf, Robert R.
 1986 *People of the North Cascades*. National Park Service, Pacific Northwest Region, Seattle, Washington. On file at the Washington State Department of Archaeology and Historic Preservation, Olympia.
- Mierendorf, Robert R., Franklin F. Foit, Jr., and Darby C. Stapp
 2018 *Holocene Geochronology and Archaeology at Cascade Pass, Northern Cascade Range, Washington*. Journal of Northwest Anthropology Memoir 16. Northwest Anthropology LLC, Richland, Washington.
- Mierendorf, Robert R., David J. Harry, and Gregg M. Sullivan
 1998 *An Archaeological Site Survey and Evaluation in the Upper Skagit River Valley, Whatcom County, Washington*. Technical report NPS/CCNOCA/CRTR-98/01, North Cascade National Park Service Complex, Sedro Woolley, Washington. On file at the Washington State Department of Archaeology and Historic Preservation, Olympia.
- Miller, Bruce G.
 1993 The Press, the Boldt Decision, and Indian–White Relations. *American Indian Culture and Research Journal* 17(2):75–97.
 1995 Folk Law and Contemporary Coast Salish Tribal Code. *American Indian Culture and Research Journal* 19(3):141–164.
 1997 The “Really Real” Border and the Divided Salish Community. *BC Studies* No. 112:63–79.
 1998 *The Great Race of 1941: A Coast Salish Public Relations Coup*. *The Pacific Northwest Quarterly* 89(3):127–135.
 2001 *The Problem of Justice: Tradition and Law in the Coast Salish World*. University of Nebraska Press, Lincoln.
- Miller, Bruce G., and Daniel L. Boxberger
 1994 Creating Chiefdoms: The Puget Sound Case. *Ethnohistory* 41:267–293.
- Miller, Jay
 1988 *Shamanic Odyssey: The Lushootseed Salish Journey to the Land of the Dead*. Anthropology Papers No. 32. Ballena Press, Menlo Park, California.

- Miss, Christian J., and Sarah K. Campbell
 1991 *Prehistoric Cultural Resources of Snohomish County, Washington*. Prepared for the Washington State Office of Archaeology and Historic Preservation, Contract No. 2-90- 710-18. NWAA, Inc., Seattle, Washington. On file at the Washington State Department of Archaeology and Historic Preservation, Olympia.
- Mitchell, Donald H.
 1971 Archaeology of the Gulf of Georgia Area, a Natural Region and its Culture Types. *Syesis* 4:1–228.
 1990 Prehistory of the Coasts of Southern British Columbia and Northern Washington. In *Northwest Coast*, edited by W. Suttles, pp. 340–358. Handbook of North American Indians, vol. 7, W.C. Sturtevant, general editor. Smithsonian Institution, Washington, D.C.
- Mooney, Kathleen A.
 1976 Urban and Reserve Coast Salish Employment: A Test of Two Approaches to the Indian’s Niche. *Southwestern Journal of Anthropological Research* 32:390–410.
- Moss, Madonna
 1986 Native American Religious use in the Pacific Northwest: A Case Study from the Mt. Baker–Snoqualmie National Forest. *Northwest Anthropological Research Notes* 20:191–201.
- Moss, Madonna L., Dorothy M. Peteet, and Cathy Whitlock.
 2007 Mid-Holocene culture and climate on the Northwest Coast of North America. In *Climate change and cultural dynamics: a global perspective on mid-Holocene transitions*, edited by David G. Anderson, Kirk A. Maasch, and Daniel H. Sandweiss, pp. 491–530. Academic Press, London.
- Munsell, David A.
 1974 *U.S. Army Engineer District, Seattle Archaeological and Paleontological Site Survey Form (SK31)*. On file at the Washington State Department of Archaeology and Historic Preservation, Olympia.
- National Cooperative Soil Survey
 2005 Skagit Series. Electronic Document
https://soilseries.sc.egov.usda.gov/OSD_Docs/S/SKAGIT.html, accessed October 10, 2019.
- Nelson, Charles M.
 1990 Prehistory of the Puget Sound Region. In *Northwest Coast*, edited by Wayne Suttles, pp. 481–484. Handbook of North American Indians, Vol. 7, William C. Sturtevant, general editor. Smithsonian Institution, Washington, D.C.
- Northwestern University Library
 2003a “Goat-hair Blanket—Cowichan,” by Edward S. Curtis. Electronic document, http://curtis.library.northwestern.edu/plates_curtis/ct09/ct09036r.jpg, accessed July 6, 2018.
 2003b “Mat House—Skokomish,” by Edward S. Curtis. Electronic document, <http://curtis.library.northwestern.edu/curtis/viewPage.cgi?showp=1&size=2&id=nai.09.port.0000010.p&volume=9>, accessed July 6, 2018.
 2003c “Puget Sound Baskets,” by Edward S. Curtis. Electronic document, http://curtis.library.northwestern.edu/plates_curtis/cp09/cp09017r.jpg, accessed July 6, 2018.
- NWAA/EHC (Northwest Archaeological Associates/Environmental History Company)
 2007 *Research Design for Identification of Archaeological Properties Part I: Native American Properties. The Alaskan Way Viaduct and Seawall Replacement Project*. Submitted to Washington State Department of Transportation, Seattle. Northwest Archaeological Associates/Environmental History Company, Seattle. On file at the Washington State Department of Archaeology and Historic Preservation, Olympia.
- Oakley, Janet
 2004 Skagit County-Thumbnail History – HistoryLink Essay 5663. Electronic document, http://www.historylink.org/index.cfm?DisplayPage=output.cfm&file_id=5663, accessed July 6, 2018.

- Onat, Astrida
1976 *State of Washington Archaeological Site Inventory Form (45SK101)*. On file at the Washington State Department of Archaeology and Historic Preservation, Olympia.
- Pettit, Linda
1996 *State of Washington Joint Aquatic Resources Permit Application (JARPA) Form*. On file at Town of La Conner.
- Pojar, Jim, and Andy MacKinnon
1994 *Plants of the Pacific Northwest Coast*. Lone Pine, Vancouver, British Columbia.
- Port of Skagit
2019a [2007] La Conner Marina Master Plan Update—Volume I: Existing Marine Facilities. Electronic document, http://www.portofskagit.com/images/uploads/fig2_extfac.pdf, accessed May 20, 2019.
2019b La Conner Marina. Electronic document, <http://www.portofskagit.com/la-conner-marina/>, accessed May 20, 2019.
- Porter, Stephen C., and Terry W. Swanson
1998 Radiocarbon age constraints on rates of advance and retreat of the Puget Lobe of the Cordilleran ice sheet during the last glaciation. *Quaternary Research* 50:205–213.
- Pratt, Heather Lynn
1992 *The Charles culture of the Gulf of Georgia: a re-evaluation of the culture and its three sub-phases*. Master's thesis, Department of Anthropology, University of British Columbia.
- Prentiss, Anna Marie, and Ian Kuijt
2004 *Complex Hunter-Gatherer Evolution and Organization of Prehistoric Communities on the Plateau of Northwestern North America*. University of Utah Press, Salt Lake City.
2012 *People of the Middle Fraser Canyon: An Archaeological History*. University of British Columbia Press, Vancouver.
- Reece, Daphne
1985 *Historic Houses of the Pacific Northwest*. Chronicle Books, San Francisco.
- Riley, Carroll L.
1974 [1953] Ethnological Field Investigation and Analysis of Historical Material Relative to Group Distribution and Utilization of Natural Resources Among Puget Sound Indians. In *Coast Salish and Western Washington Indians, Volume 2*, edited by David Agee Horr, pp. 27–88. Garland, New York.
- Robbins, William G.
2018 Oregon Donation Land Act. Electronic document, https://oregonencyclopedia.org/articles/oregon_donation_land_act/#.WfIrQduZNTZ, accessed July 6, 2018.
- Roberts, Natalie
1975 *A History of the Swinomish Indian Tribal Community*. Ph.D. dissertation, Department of Anthropology, University of Washington, Seattle.
- Rooke, Lara C., James Schumacher, and Glenn D. Hartmann
2002 Bainbridge Island Archaeological Overview and Predictive Model. Submitted to Bainbridge Island Historical Society and the City of Bainbridge Island. Technical Report 0106. Western Shore Heritage Services, Bainbridge Island, Washington. On file at the Washington State Department of Archaeology and Historic Preservation, Olympia.
- Ruby, Robert H., and John A. Brown
1986 *A Guide to the Indian Tribes of the Pacific Northwest*. University of Oklahoma Press, Norman.
- Salo
1976 *U.S. Cultural Resources Site Survey Record (45SK101)*. Army Corps of Engineers, Seattle. On file at the Washington State Department of Archaeology and Historic Preservation, Olympia.

- Sampson, Chief Martin J.
1972 *Indians of Skagit County*. Skagit County Historical Society, La Conner, Washington.
- Samuels, S.R.
1993 *The Archaeology of Chester Morse Lake: Long-Term Human Utilization of the Foothills in the Washington Cascade Range*. Center for Northwest Anthropology, Department of Anthropology, Washington State University, Pullman. On file at the Washington State Department of Archaeology and Historic Preservation, Olympia.
- Schalk, Randall
1988 Chapter 8 Management Zones and Archaeological Expectations. In *The Evolution and Diversification of Native Land Use Systems on the Olympic Peninsula: A Research Design*, edited by Randall Schalk with contributions by David Yesner. Report Submitted to the National Park Service Pacific Northwest Region Contract No. CX-900-4-E075. Institute for Environmental Studies, University of Washington. On file at the Washington State Department of Archaeology and Historic Preservation, Olympia.
- Sherrod, B.L., R.C. Bucknam, and E.B. Leopold
2000 Holocene relative sea level changes along the Seattle Fault at Restoration Point, Washington. *Quaternary Research* 54:384–393.
- Siegfried, Dorothy
1970 *National Register of Historic Places Registration Form (SK161)*. On file at the Washington State Department of Archaeology and Historic Preservation, Olympia.
- Smart, Tamela
2009 *Archaeological Investigation Report: Swadabs Marsh Habitat Restoration and Archaeological Site Protection Project*. On file at the Washington State Department of Archaeology and Historic Preservation, Olympia.
2010 *State of Washington Archaeological Site Inventory Form (45SK428)*. On file at the Washington State Department of Archaeology and Historic Preservation, Olympia.
2011 *Archaeological Investigation Report: La Conner Waterfront Boardwalk*. On file at the Washington State Department of Archaeology and Historic Preservation, Olympia.
- Smith, Allan H.
1964 *Ethnographic Guide to the Archaeology of Mt. Rainier National Park*. Washington State University, Pullman, Washington. On file at the Washington State Department of Archaeology and Historic Preservation, Olympia.
- Smith, Allan
1988 Upper Skagit: Ethnography of the North Cascades. Centre for NW Anthropology, WSU, Pullman, Washington.
- Smith, Harlan I.
1900 Archaeological Investigations on the North Pacific Coast in 1899. *American Anthropologist* 3:563–567.
1907 *Archaeology of the Gulf of Georgia and Puget Sound*. American Museum of Natural History Memoir 4, Part 6, pp. 301–441. American Museum of Natural History, New York.
- Smith, Harlan I., and Gerald Fowkes
1901 *Cairns of B.C. and Washington*. American Museum of Natural History Memoir 4, Part 2, pp. 55–755. American Museum of Natural History, New York.
- Smith, Marian
1941 The Coast Salish of Puget Sound. *American Anthropologist* 43:197–211.
1950 The Nooksack, the Chilliwack, and the Middle Fraser. *Pacific Northwest Quarterly* 41:330–341.
1956 The Cultural Development of the Northwest Coast. *Southwestern Journal of Anthropological Research* 12:272–294.
- Snyder, Sally

- 1954 Aboriginal Saltwater Fisheries: Swinomish, Lower Skagit, Kikialus, and Samish Tribes of Indians. Master's thesis, Department of Sociology and Anthropology, University of Windsor, Ontario.
- 1964 Skagit Society and its Existential Basis: An Ethnofolkloric Reconstruction. Unpublished Ph.D. dissertation, University of Washington, Seattle, Washington.
- 1980 Aboriginal Settlements in the Skagit Drainage System. In *Cultural Resource Overview and Sample Survey of the Skagit Wild and Scenic River Study Area on the Mt. Baker–Snoqualmie National Forest, Washington State*, Volume 2, by Astrida R. Blukis Onat, Lee A. Bennett, and Jan L. Hollenbeck, pp. 19–39. Prepared for the Mt. Baker–Snoqualmie National Forest by the Institute of Cooperative Research. On file at the Washington State Department of Archaeology and Historic Preservation, Olympia.
- 1981 Swinomish, Upper Skagit and Sauk-Suiattle. In *Inventory of Native American Religious Use, Practices, Localities and Resources: Study Area on the Mt. Baker–Snoqualmie National Forest, Washington State*, edited by Astrida R. Blukis Onat and Jan L. Hollenbeck, pp. 213–308. Report prepared for Mt. Baker–Snoqualmie National Forest, Seattle, Washington. Institute of Cooperative Research, P.O. Box 20275, Broadway Station, Seattle, Washington 98102.
- Soil Survey Staff, Natural Resources Conservation Service, United States Department of Agriculture. 2019 Web Soil Survey—Penn's Neck. Electronic document, <http://websoilsurvey.nrcs.usda.gov>, accessed October 10, 2019
- Spier, Leslie
- 1935 *The Prophet Dance of the Northwest and its Derivatives: The Source of the Ghost Dance*. George Banta, Menasha, Wisconsin.
- 1936 *Tribal Distribution in Washington*. General Series in Anthropology 3. George Banta, Menasha, Wisconsin.
- Stein, J. K.
- 1984 Interpreting the Stratigraphy of Northwest Coast Shell Middens. *Tebiwa* 2:26–34.
- 2000 *Exploring Coast Salish Prehistory: The Archaeology of San Juan Island*. Burke Museum of Natural History and Culture, University of Washington Press, Seattle.
- Stein, Julie K. and Laura S. Phillips (editors)
- 2002 *Vashon Island Archaeology: A View from Burton Acres Shell Midden*. University of Washington Press, Seattle.
- Stern, Bernhard J.
- 1934 *The Lummi Indians of Northwest Washington*. Columbia University Press, Morningside Heights, New York.
- Stewart, Hilary
- 1973 *Artifacts of the Northwest Coast Indians*. Hancock House, Surrey, British Columbia.
- 1977 *Indian Fishing: Early Methods on the Northwest Coast*. Douglas & McIntyre, Vancouver.
- 1979 *Looking at Indian Art of the Northwest Coast*. Douglas & McIntyre, Vancouver.
- 1984 *Cedar: Tree of Life to the Northwest Coast Indians*. University of Washington Press, Seattle.
- 1996 *Stone, Bone, Antler & Shell: Artifacts of the Northwest Coast*. 2nd ed. Douglas & McIntyre, Vancouver.
- Strickland, R.
- 1984 *River Pigs and Cayuses: Oral Histories from the Pacific Northwest*. Lexikos, San Francisco.
- 1990 *Whistlepunks and Geoducks: Oral Histories from the Pacific Northwest*. Paragon House, New York.
- Suttles, Wayne
- 1957 The Plateau Prophet Dance Among the Coast Salish. *Southwestern Journal of Anthropology* 13(4):352–396.

- 1958 Private Knowledge, Morality, and Social Classes among the Coast Salish. *American Anthropologist* 60:497–507.
- 1960 Affinal Ties, Subsistence, and Prestige among the Coast Salish. *American Anthropologist* 62:296–305.
- 1974 [1951] *Coast Salish and Western Washington Indians I: Economic Life of the Coast Salish of Haro and Rosario Straits*. [PhD dissertation, Department of Anthropology, University of Washington, Seattle.] Garland, New York.
- 1987 *Coast Salish Essays*. University of Washington Press, Seattle.
- 1990a Central Coast Salish. In *Northwest Coast*, edited by Wayne Suttles, pp. 453–475. Handbook of North American Indians, Volume 7. Smithsonian Institution, Washington, D.C.
- 1990b *Northwest Coast*. Handbook of North American Indians. No.7. Smithsonian Institution, Washington, D.C.
- Suttles, Wayne, and Barbara Lane
1990 Southern Coast Salish. In *Northwest Coast*, edited by Wayne Suttles, pp. 485–502. Handbook of North American Indians, Volume 7. Smithsonian Institution, Washington, D.C.
- Tarver, Frank, and Robert Free
1963 *An Archaeological Site Survey of Southern Puget Sound*. On file, Department of Archaeology and Historic Preservation, Olympia, Washington.
- Taylor, Amanda K., Julie K. Stein, Stephanie A.E. Jolivette
2011 Big Sites, Small Sites, and Coastal Settlement Patterns in the San Juan Islands, Washington, USA. *Journal of Island and Coastal Archaeology* 6:287–313.
- Taylor, Herbert C., Jr.
1960 The Fort Nisqually Census of 1838-1839. *Ethnohistory* Vol 7, No. 4.
1984 *Mollusks, Western Washington Indians, and the Steven's Treaties of 1854–1856*. George Banta, Menasha, Wisconsin.
- Thorson, Robert M.
1980 Ice-sheet Glaciation of the Puget Lowland, Washington, During the Vashon Stage (late Pleistocene). *Quaternary Research* 13:303–312.
1989 Glacio-isostatic Response of the Puget Sound Area, Washington. *Geological Society of America Bulletin* 101:1163–1174.
- Thrush, C.
2007 *Native Seattle: Histories from the Crossing-Over Place*. University of Washington Press, Seattle.
- Tollefson, Kenneth D.
1992 The Political Survival of Landless Puget Sound Indians. *American Indian Quarterly* 16: 213–35.
- Tremaine, D.G.
1975 *Indian and Pioneer Settlement of the Nooksack Lowland, Washington to 1890*. Occasional Paper #4, Center for Pacific Studies, Western Washington State College, Bellingham.
- Turner, Nancy J.
1995 *Food Plants of Coastal First Peoples*. Royal British Columbia Museum Handbook. Victoria, British Columbia.
- Tweddell, Collin Ellidge
1974 [1953] A Historical and Ethnological Study of the Snohomish Indian People: A Report Covering Their Aboriginal and Continued Existence and Their Effective Occupation of a Definable Territory. In *Coast Salish and Western Washington Indians, Volume 2*, edited by David Agee Horr, pp. 475–694. Garland, New York.
- United States
1859 Treaty between the United States and the Dwámish, Suquámish, and other allied and subordinate Tribes of Indians in Washington Territory. Concluded at Point Elliott, Washington Territory, January 22, 1855, ratified by the Senate, March 8, 1859. Proclaimed by the President

- of the United States, April 11, 1859. *United States Statutes at Large, Treaties, and Proclamations of the United States of America* XII:927.
- United States Court of Claims
 1933 *The Duwamish, Lummi, Whidbey Island, Skagit, upper Skagit, Swinomish, Kikiallus, Snohomish, Snoqualmie, Stillaguamish, Suquamish, Samish, Puyallup, Squaxin, Skokomish, upper Chehalis, Muckleshoot, Nooksack, Chinook and San Juan Islands tribes of Indians, claimants, vs. the United States of America, defendant*. No. F-275. Argus Press, Seattle.
- Washington State Department of Natural Resources
 2016 Surface Geology 1:100,000 scale. Electronic document, <https://www.dnr.wa.gov/programs-and-services/geology/publications-and-data/gis-data-and-databases>, accessed June 26, 2019.
- Waters, Michael R., Thomas W. Stafford Jr., H. Gregory McDonald, Carl Gustafson, Morten Rasmussen, Enrico Cappellini, Jesper V. Olsen, Damian Szklarczyk, Lars Juhl Jensen, M. Thomas P. Gilbert, and Eske Willerslev.
 2011 Pre-Clovis Mastodon Hunting 13,800 Years Ago at the Manis Site, Washington. *Science*
- Wessen, Gary
 1988 *Prehistoric Cultural Resources of Island County, Washington*. On file with Washington State Department of Archaeology and Historic Preservation, Olympia.
 1989 *A Report of Archaeological testing at the Dupont Southwest Site (45-PI-72), Pierce County, Washington*. Western Heritage, Olympia, Washington. On file at the Washington State Department of Archaeology and Historic Preservation, Olympia.
- Wessen, Gary C., and M.L. Stilson
 1987 *Resource Protection Planning Process Southern Puget Sound Study Unit*. Prepared for the Washington State Department of Community Development Office of Archaeology and Historic Preservation. On file at the Washington State Department of Archaeology and Historic Preservation, Olympia.
- Wessen, Gary C., and J. Welch
 1991 *A Report of Cultural Resource Survey Activities in the Lake Cushman Project Area, Mason County, Washington*. Western Heritage, Inc. On file at the Washington State Department of Archaeology and Historic Preservation, Olympia.
- White, William S.
 2013 *National Register of Historic Places Nomination Form (45CA523)*. On file at the Washington State Department of Archaeology and Historic Preservation, Olympia.
- Willis, Margaret
 1973 *Chechacos All – The Pioneering of the Skagit*. Skagit County Historical Society, Mount Vernon, Washington.
 1975 *Skagit Settlers: Trials and Triumphs, 1890–1920*. Skagit County Historical Society, Mount Vernon, Washington.

9.0 APPENDICES

Appendix 1: Shovel Test Descriptions

Particle Size Classes

| Scale | Clay | Silt | Sand | Gravel | Pebble | Cobble | Boulder |
|-------|---------|--------------|-----------|--------|----------|---------|---------|
| in | <.00015 | .00015-.0025 | .0025-.08 | .08-1 | 1-4 | 4-10 | >10 |
| mm | <.004 | .004-.062 | .062-2 | 2-25.4 | 25.4-102 | 102-254 | >254 |

Matrix Descriptions

Matrix 1: 10 Y/R dark grayish brown 80% silt, 10% gravels, 10% cobbles, compact, dry -fill

Matrix 2: 10 Y/R 4/3 brown 70% silty sand (mostly sand), 20% pebbles, 10% gravels, mod-heavy compaction, fill

Shovel Test Descriptions

| ST | Depth (cm) | Dia (cm) | Matrix Description | Comments | Location |
|----|------------|----------|---|---|--|
| 1 | 96 | 41 | 0-39: M1-cobble @ bottom of layer 39-96: M2 *large cobble in side wall 1 piece of blue plastic (trash) | Negative | Southeast of ST2, Southeast end of long grassy area. |
| 2 | 86 | 50 | 0-51: M1 51-86: M2 --clear transition | Negative. | Northwest of ST 1. |
| 3 | 85 | 50 | 0-15: M1 mixed with M2 15-85: M2 *cobble impasse | Negative. Terminated due to cobble impasse. | In bioswale. |
| 4 | 97 | 48 | 0-39: M1 39-97: M2-looser compaction w/ depth, damp | Negative | South of ST 1, West of Park St. |
| 5 | 98 | 43 | 0-98: M1- darker color, looser compaction 0-8 cm dbs, organics & rootlets 71- 98 cm dbs Two clear glass pieces~ 20-40cm dbs | Negative. | Under plum trees, inside cement path loop. |
| 6 | 75 | 50 | 0-10: gravel fill mixed with M2 10-75: M2 *encountered black filter fabric covering base of ST. | Negative. Terminated when reached filter fabric. | In bioswale. |
| 7 | 68 | 42 | 0-68: M2 | Negative. Terminated when reached filter fabric. | In bioswale, North of septic drain field. |
| 8 | 80 | 50 | 0-10: imported bark mulch for landscaping 10-30: M1 30-80: M2 | Negative. | West of Park St. |

Appendix 2: Photograph Log

| Number | View | Description |
|---------------|-------------|--|
| 191015CMS001 | NW | ST1 w/ scale |
| 191015CMS002 | NW | ST1 w/o scale |
| 191015CMS003 | S | Cobble in ST1 |
| 191015CMS004 | W | ST1 overview shows ST2 |
| 191015CMS005 | NW | ST4 w/ scale |
| 191015CMS006 | NW | ST4 w/o scale |
| 191015CMS007 | NW | ST4 overview shows path under plum tree |
| 191015CMS008 | SW | ST5 w/ scale |
| 191015CMS009 | SW | ST5 w/o scale |
| 191015CMS010 | W | ST5 overview shows plum tree house 920 |
| 191015CMS011 | P | Glass pieces from ST5 w/ scale |
| 191015CMS012 | S | ST7 w/ scale |
| 191015CMS013 | S | ST7 w/o scale |
| 191015CMS014 | P | Filter fabric at bottom of ST7 |
| 191015CMS015 | S | ST7 overview shows house 920 |
| 191015CMS016 | NW | ST7 overview shows trees in NW corner of lot |
| 191015CMS017 | E | Project area overview shows long grassy area |
| 191015CMS018 | W | Project area overview shows plum trees, looks toward ST5 |
| 191015CMS019 | W | Project area overview: water utility capsule |
| 191015CMS020 | W | Project area overview: water utility capsule |
| 191015CMS021 | W | Project area overview: water pump |
| 191015CMS022 | E | Project area overview: toward ST4 & 8 |
| 191015PEH001 | W | ST2 Strata |
| 191015PEH002 | W | ST2 w/ tape |
| 191015PEH003 | W | ST2 overall |
| 191015PEH004 | W | ST3 strata |
| 191015PEH005 | W | ST3 w/ tape |
| 191015PEH006 | W | ST3 overall |
| 191015PEH007 | S | ST3 overall |
| 191015PEH008 | S | ST6 strata |
| 191015PEH009 | S | ST6 w/ tape |
| 191015PEH010 | W | ST6 overall |
| 191015PEH011 | P | Close up of filter fabric |
| 191015PEH012 | W | Overview from entrance, ERCI ST7 |
| 191015PEH013 | W | Overview from entrance, with purple leaf plum trees |
| 191015PEH014 | E | Overview from entrance, with purple leaf plum trees |
| 191015PEH015 | S | Overview from entrance, with purple leaf plum trees w/ ST6 |
| 191015PEH016 | W | ST8 strata |
| 191015PEH017 | W | ST8 w/ tape |
| 191015PEH018 | W | ST8 overall |

Appendix 3: Unanticipated Discovery Protocol

In the event that any ground-disturbing activities or other project activities related to this development or any future development uncover protected cultural material (see below), the following actions should be taken:

1. If the cultural material is a historic or precontact object (glass bottle, tin can, stone, bone, horn or antler tool); a historic or precontact feature (hearth, building foundation, privy), then the on-site supervisor should avoid the object, secure the location and relocate work activities to a different part of the Project area. The Project manager should then call a professional archaeologist to evaluate the discovery.
2. If ground disturbing activities encounter human skeletal remains during the course of construction, then all activity will cease that may cause further disturbance to those remains. The area of the find will be secured and protected from further disturbance. The finding of human skeletal remains will be reported to the Skagit County coroner (360-336-9431) and Skagit County Sheriff (360-336-9450) in the most expeditious manner possible. The remains will not be touched, moved, or further disturbed. The county medical examiner/coroner will assume jurisdiction over the human skeletal remains and make a determination of whether those remains are forensic or non-forensic. If the county medical examiner/coroner determines the remains are non-forensic, then they will report that finding to the Department of Archaeology and Historic Preservation (DAHP) who will then take jurisdiction over the remains. The DAHP will notify any appropriate cemeteries and all affected tribes of the find. The State Physical Anthropologist, Dr. Guy Tasa (360-586-3534), will make a determination of whether the remains are Indian or Non-Indian and report that finding to any appropriate cemeteries and the affected tribes. The DAHP will then handle all consultation with the affected parties as to the future preservation, excavation, and disposition of the remains.

Cultural material that may be protected by law could include but is not limited to:

- Logging, mining, railroad, or agriculture equipment older than 50 years (Figure 29)
- Historic foundations (Figure 30)
- Historic bottles, china and soldered dot cans (Figure 31–Figure 32)
- Buried layers of black soil with shell, fire-modified rock and fish or mammal bones (Figure 33)
- Buried cobbles that may indicate a hearth feature
- Non-natural sediment or stone deposits that may be related to activity areas of people
- Stone tools or stone flakes, projectile points (arrowheads), ground stone adzes or grinding stones (abraders) (Figure 35–Figure 38)
- Bone, shell, horn, or antler tools that may include scrapers, cutting tools, wood working wedges (Figure 39, Figure 37)
- human remains



Figure 29: Example of historic feature for UDP.



Figure 30: Example of a historic foundation for UDP.



Figure 31: Example of historic glass artifacts for UDP.



Figure 32: Example of historic solder dot can for UDP



Figure 33: Example of protected shell midden for UDP.



Figure 34: Example of protected rock lined hearth feature for UDP.



Figure 35: Example of projectile point for UDP.



Figure 36: Example of protected adze blade for UDP.



Figure 37: Example of stone tool for UDP.



Figure 38: Example of stone tool for UDP.



Figure 39: Example of bone awl for UDP.



Figure 40: Example of protected worked bone and spines for UDP.

CONTACT LIST

| | | | |
|-----------------------|---|--------------------------|-----------------------------|
| Skagit County Sheriff | La Conner Detachment- Skagit County Sheriff | 360-336-9450 | |
| Haley L. Thompson | Skagit County Coroner | 360-336-9431 | coroner@co.skagit.wa.us |
| Jackie Ferry | Samish Indian Nation, THPO | 360.293.6404 ext. 126 | jferry@samishtribe.nsn.us |
| Josephine Jefferson | Swinomish Indian Tribal Community, THPO | 360-466-7352 | jjefferson@swinomish.nsn.us |
| Dr. Robert Whitlam | DAHP, State Archaeologist | 360-586-3080 | Rob.Whitlam@dahp.wa.gov |
| Dr. Guy Tasa | DAHP, State Physical Anthropologist | 360-586-3534 | Guy.Tasa@dahp.wa.gov |
| Kelly Bush | Project Archaeologist (ERCI) | 360-661-0356 | kelrbush@equinoxerci.com |



Allyson Brooks Ph.D., Director
State Historic Preservation Officer

November 12, 2019

Ms. Shelley Kjos
Skagit County Public Health
700 South Second Street # 301
Mount Vernon, Washington 98273

Re: Channel Cove Housing Project
Log No.: 2019-06-04216-HUD-CDBG

Dear Ms. Kjos;

Thank you for contacting our Department. We have reviewed the professional archaeological survey report you provided by for the proposed Channel Cove Housing Project, La Conner, Skagit County, Washington.

We concur with the determination of No Historic Properties Affected with the stipulation for an unanticipated discovery plan.

We would appreciate receiving any correspondence or comments from concerned tribes or other parties that you receive as you consult under the requirements of 36CFR800.4(a)(4).

In the event that archaeological or historic materials are discovered during project activities, work in the immediate vicinity must stop, the area secured, and this department notified

These comments are based on the information available at the time of this review and on behalf of the State Historic Preservation Officer in compliance with the Section 106 of the National Historic Preservation Act, as amended, and its implementing regulations 36CFR800.4.

Should additional information become available, our assessment may be revised, including information regarding historic properties that have not yet been identified. Thank you for the opportunity to comment and a copy of these comments should be included in subsequent environmental documents.

Sincerely,

A handwritten signature in blue ink, appearing to read 'R. Whitlam', with a long horizontal line extending to the right.

Robert G. Whitlam, Ph.D.
State Archaeologist
(360) 586-3080
email: rob.whitlam@dahp.wa.gov

