



# Respiratory Illness in Skagit County, WA

CDC Week 12: March 19 - 25, 2023

## Influenza

- The first influenza B positive was detected this spring; influenza A has been the predominant strain this season
- 4 influenza outbreaks reported
- 7 confirmed deaths reported

## COVID-19

- Case and hospitalization rates have stabilized
- 17 outbreaks have been reported to date in 2023
- 14 deaths reported since January 1, 2023
- Bivalent vaccination rate is at 31%

## RSV

- Test positivity remains below 10%

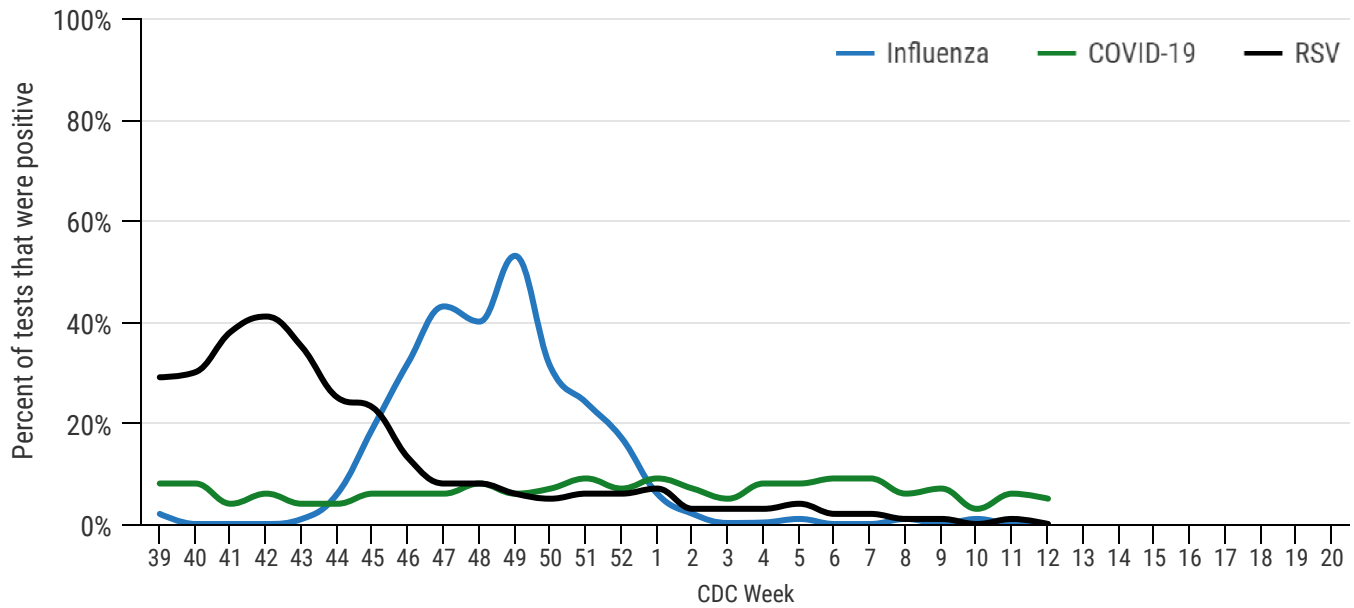


Schools continue to monitor for illnesses

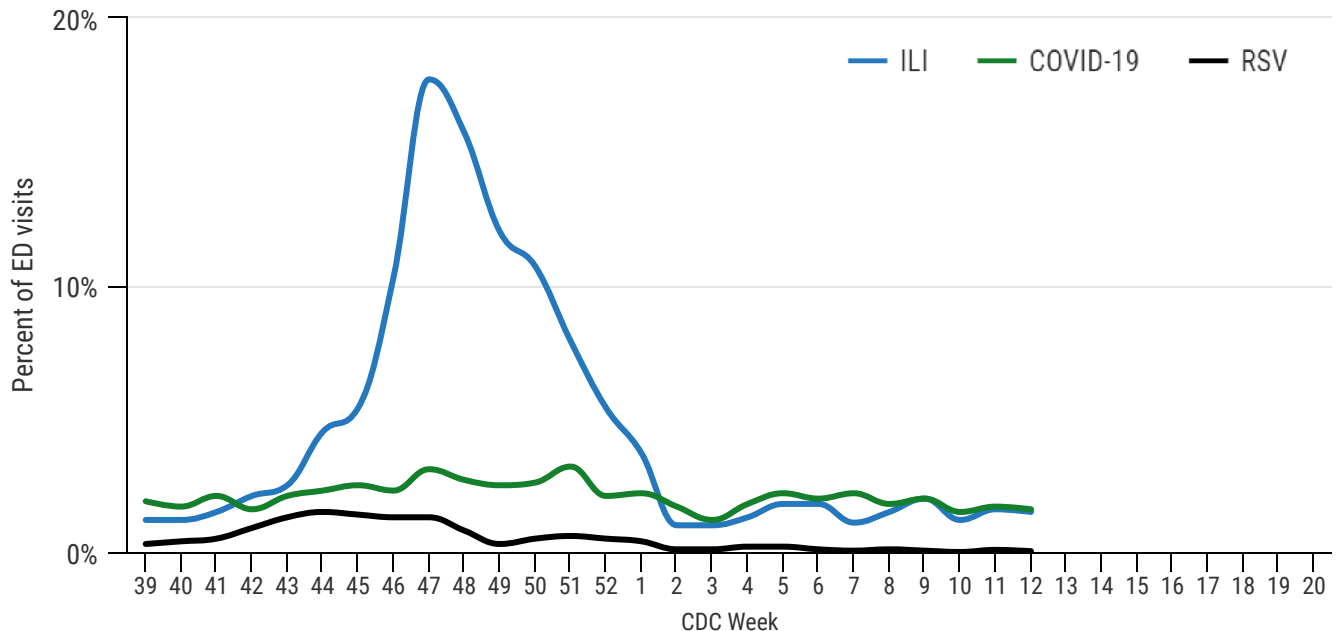


Hospitals continue to experience periods of higher patient volumes

### Percent of total tests that were positive for Influenza, COVID-19, and RSV -- Skagit County, March 19 - 25, 2023



### Percent of Emergency Department (ED) visits due to Influenza-like illness (ILI), COVID-19, and RSV -- Skagit County, March 19 - 25, 2023



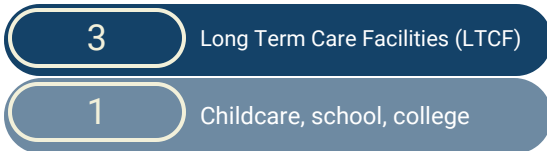
## 2022-23 INFLUENZA STATS

Influenza activity is  
**MINIMAL**



Most common influenza type identified

### Reported influenza outbreaks by setting, 2022-23 season



### Reported influenza-related deaths



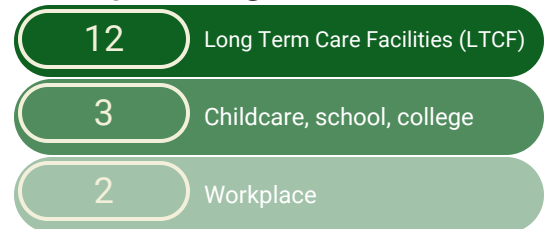
## 2023\* COVID-19 STATS

COVID-19 Transmission  
level: **SUBSTANTIAL**

**31%**

Age 5+ who have received  
a bivalent booster






### Reported COVID-19 outbreaks by setting, YTD 2023



### Reported COVID-19-related deaths, 2023<sup>1</sup>



### What you can do to stop the spread of respiratory illnesses:

-  Wash your hands frequently
-  Cover your coughs and sneezes
-  Wear a well-fitting mask in crowded indoor spaces and around high-risk individuals
-  Get a seasonal flu vaccine and stay up to date on COVID-19 vaccines
-  Stay home when you are sick

### Additional Resources

-  [Washington DOH Influenza Update](#)
-  [CDC Weekly Influenza Report](#)
-  [Snohomish County Influenza Report](#)
-  [Whatcom County Influenza Report](#)
-  [Washington DOH COVID-19](#)
-  [CDC RSV Surveillance: Washington](#)

Data partners include: Peacehealth United General, Island Hospital, and Skagit Regional Health. Data may not be 100% complete at the time of this report. \*Due to seasonality of Influenza and RSV, surveillance occurs between October 1 and May 31. To date, COVID-19 has not shown a similar seasonality trend and therefore surveillance data is based on the calendar year. <sup>1</sup>Death data is reported once finalized, usually after 30 days.

Questions? Contact Skagit County Public Health: 360-416-1500 or [CommunicableDisease@co.skagit.wa.us](mailto:CommunicableDisease@co.skagit.wa.us)