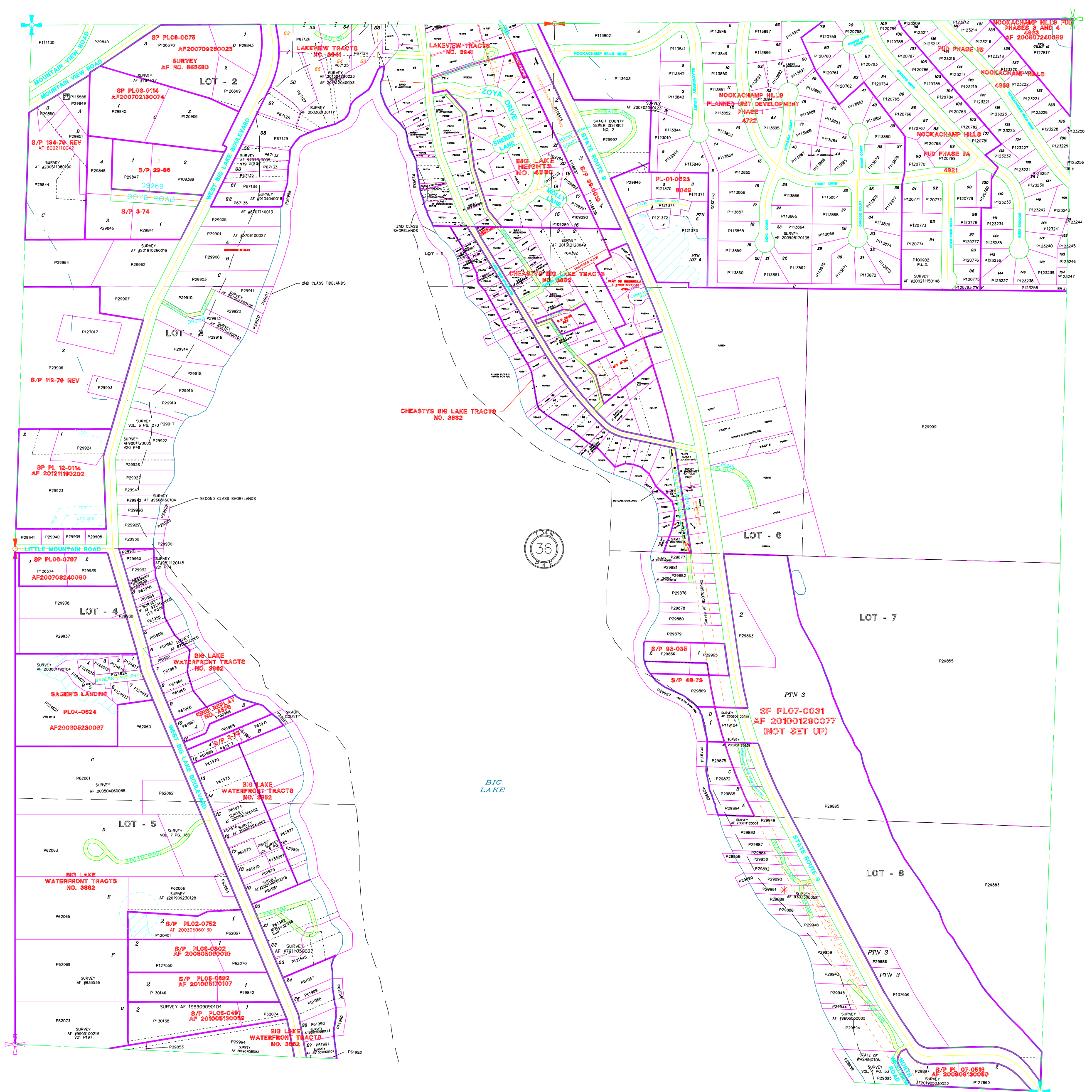


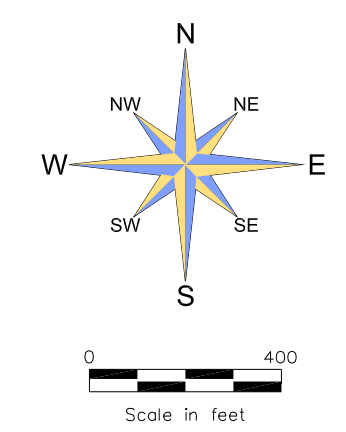
SKAGIT COUNTY



6	5	4	3	2	1
7	8	9	10	11	12
18	17	16	15	14	13
19	20	21	22	23	24
30	29	28	27	26	25
31	32	33	34	35	36

T 34 N R 04 E

*** ATTENTION**
 THIS MAP CONTAINS A PARCEL ACCOUNT THAT HAS BEEN PLACED WITH THE BEST AVAILABLE INFORMATION. THE EXACT LOCATION OF THIS PARCEL IS UNKNOWN.



These maps were created from available public records and existing map sources, not from field surveys. Map features from all sources have been adjusted to achieve a "best fit" registration to the Ownership Forces map. While great care was taken in this process, maps from different sources rarely agree as to the precise location of geographic features. The relative positioning of map features to one another results from combining different map sources without field "ground truthing".

* THIS MAP IS NOT A SUBSTITUTE FOR FIELD SURVEY *

	DATE	INIT.
DRAWN BY	11/21/96	KAS
REVISED	9/10/20	RV
PLOTTED	9/10/20	RV
MAP PRODUCED BY SKAGIT COUNTY MAPPING SERVICES		

Section 36
 T 34 N R 04 E