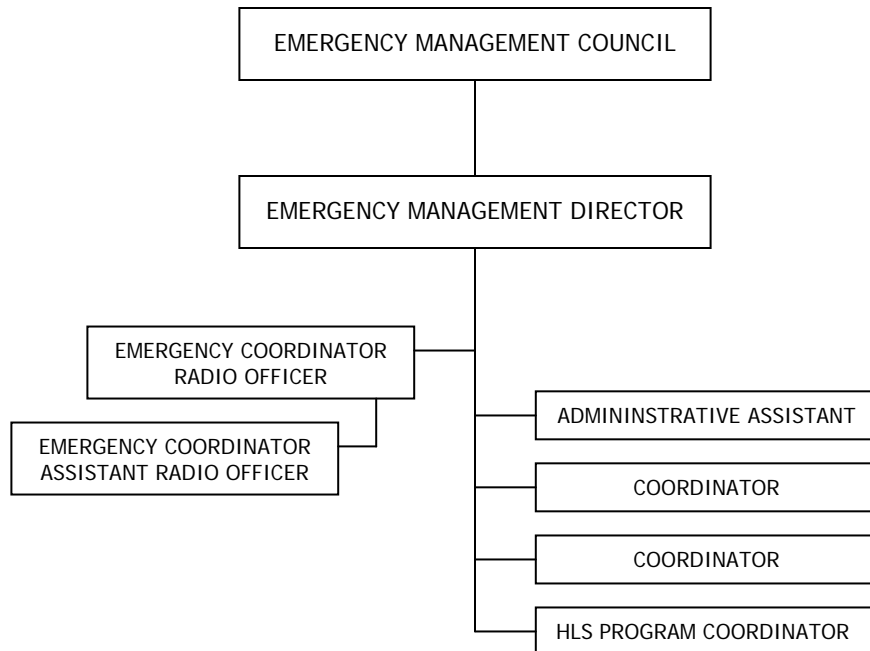


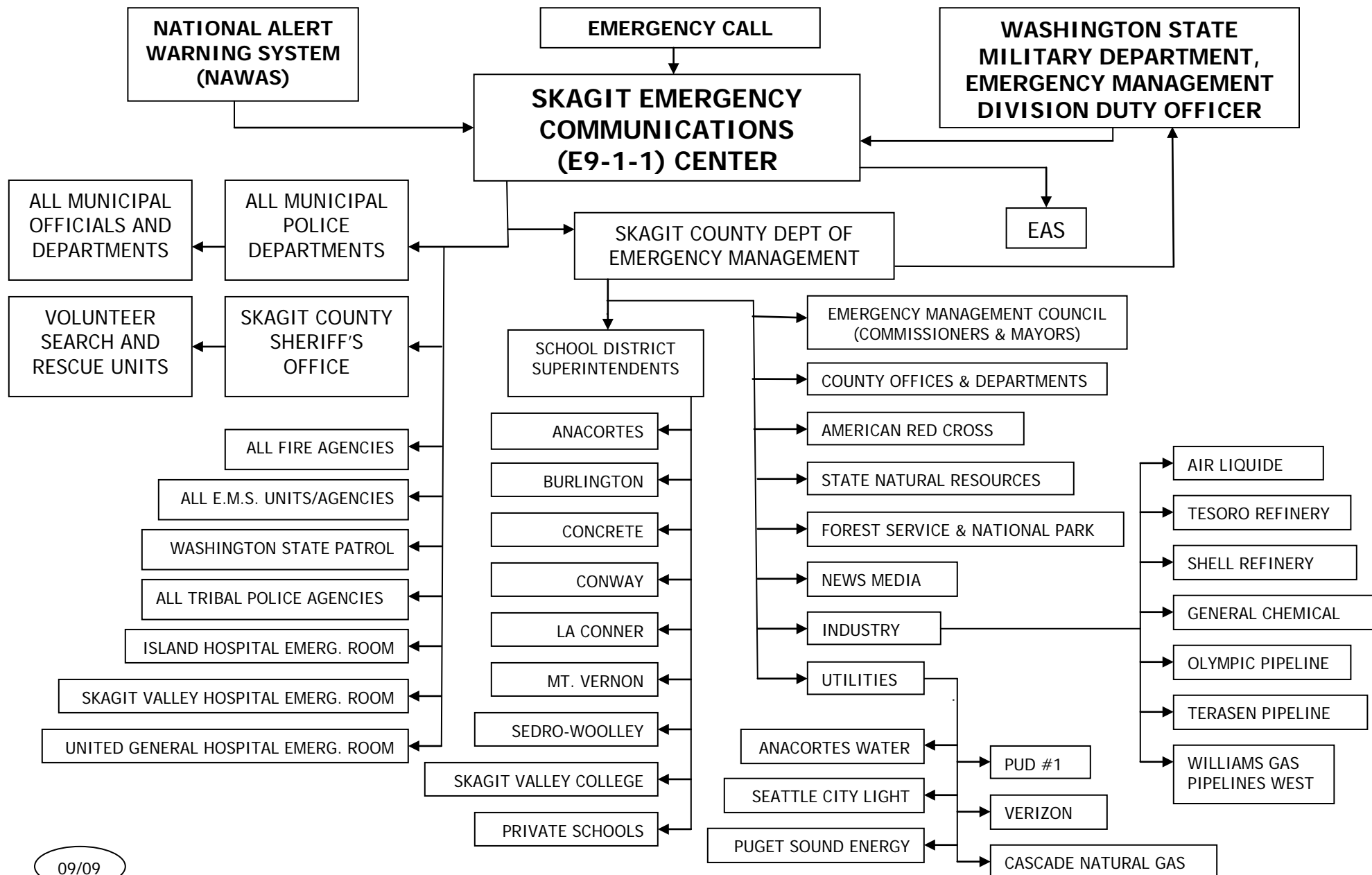
# FIGURE 1

## Skagit County Department of Emergency Management Organizational Chart



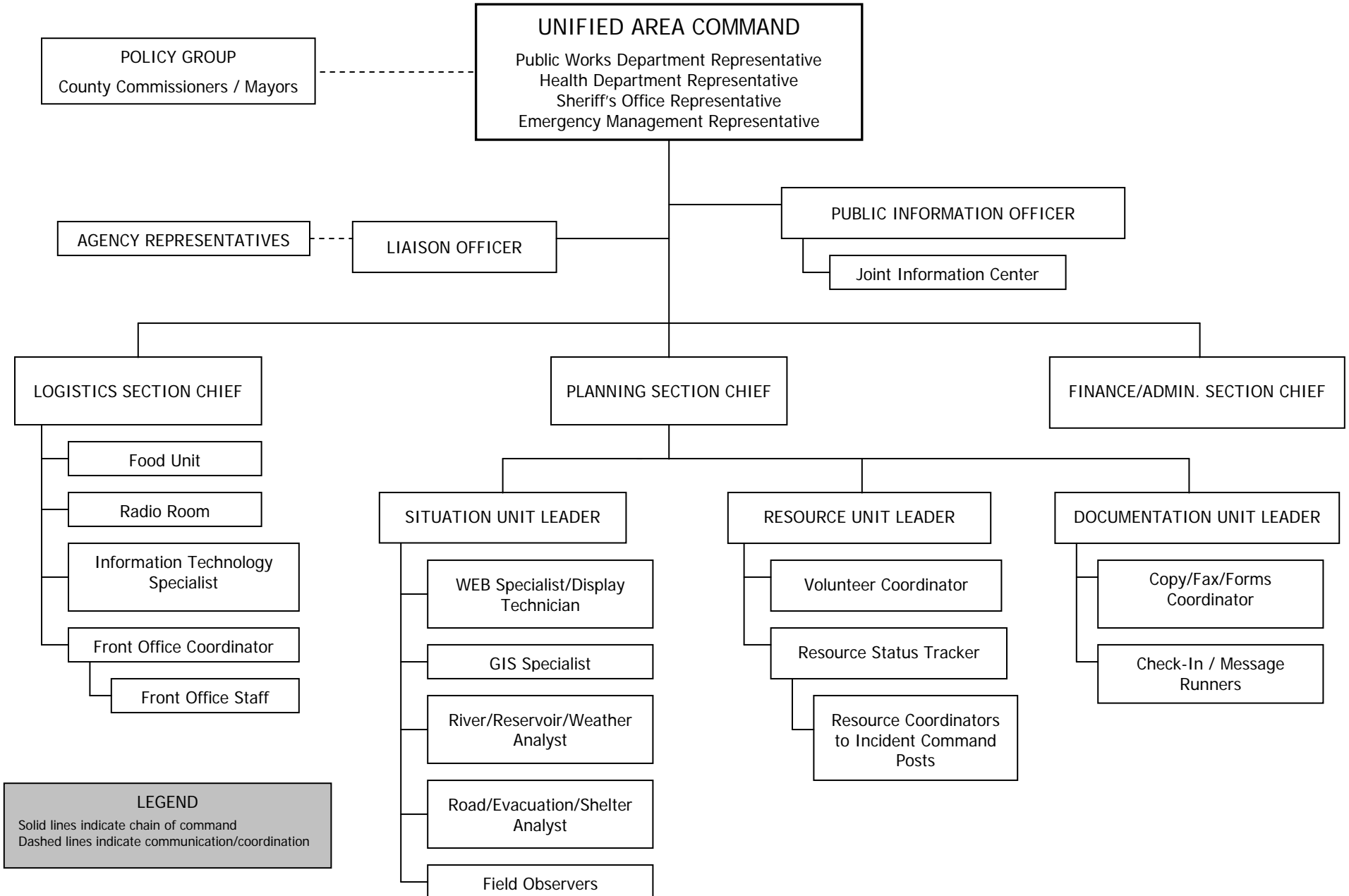
# FIGURE 2

## Skagit County Fan-Out Alerting System Diagram



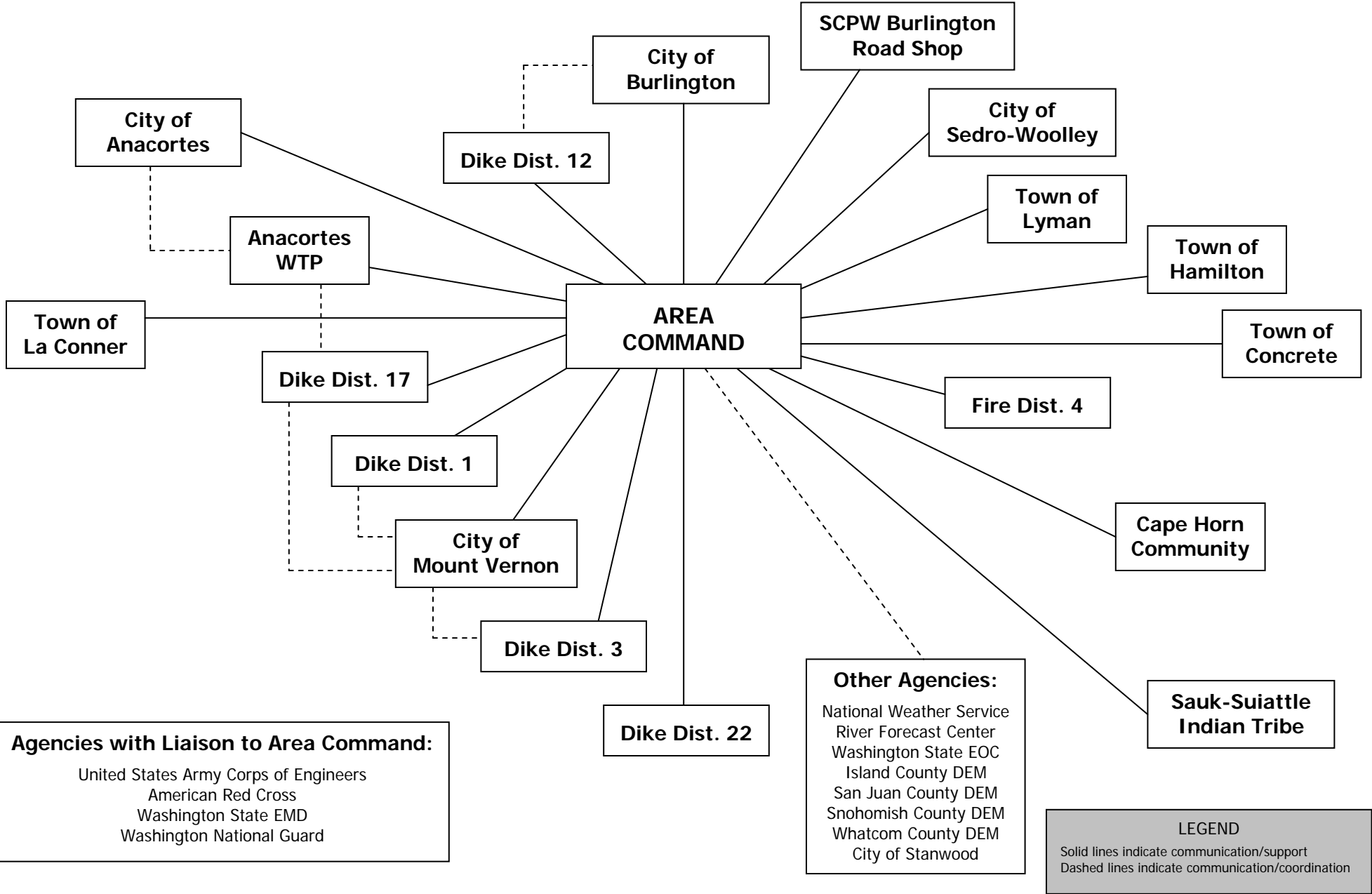
# FIGURE 3

## Skagit County Flood Response Organization – Area Command Organizational Chart



# FIGURE 4

## Skagit County Flood Response Organization – Area Command Coordination Diagram



# FIGURE 5

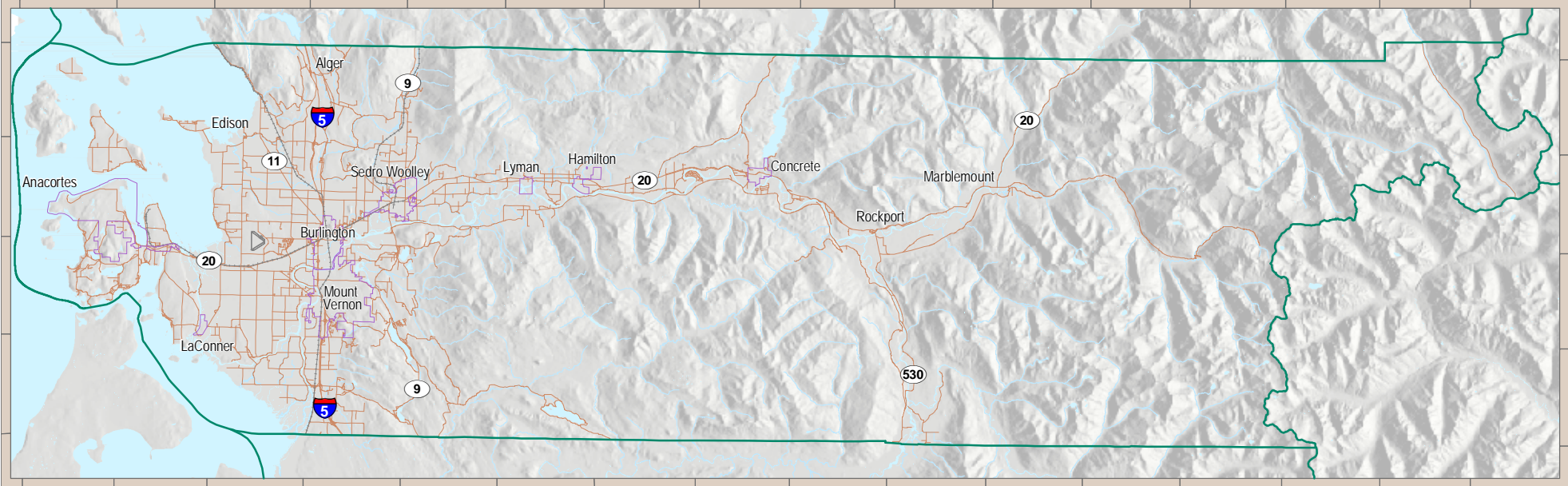
## Responsibilities Matrix

- P** = Agency with Primary Responsibilities
- S** = Agency with Support Responsibilities
- L** = Lead Agency (applicable to ESF #8 only)
- C** = Cooperating Agencies (applicable to ESF #11 only)

### EMERGENCY SUPPORT FUNCTION (ESF) ANNEXES:

	ESF #1	ESF #2	ESF #3	ESF #4	ESF #5	ESF #6	ESF #7	ESF #8	ESF #9	ESF #10	ESF #11	ESF #12	ESF #13	ESF #14	ESF #15	
Commissioners and Mayors										ESF #10 is published as a separate document in non-ESF format				S	P	
Admin. Services					S		S								S	
Budget/Finance					S		S								S	
Citizen Corps Council							S	S							S	
Coroner								P							S	
Emergency Management	S	S	S	S	P	S	P	S	S			C	S	S	P	S
EMS Agencies								P								
Facilities Dept.							S								S	
Fire Service	S			P				P								
Geographic Info. Systems (GIS)					S										S	
Hospitals								P								
Human Services						S		P							S	
Information Services		P			S										S	
Law Enforcement	S				S				P					P	S	S
Parks & Recreation						S	S								S	
Planning Dept.			S									C			S	
Public Health			S		S	S		L				C			S	S
Public Works	P		P		S		S						P		S	S
Search & Rescue									P							
Skagit 9-1-1		P		S										S	S	
ARES/RACES		S			S	S									S	
Skagit Transit	S															
Port Districts	S															
School Districts	S															
Water Purveyors			S													
Wastewater Facilities			S													
American Red Cross						P		S				C			S	
Salvation Army & Faith-Based Org.						S									S	
Washington State EMD									S			C			S	
Washington State Patrol														S		
FEMA									S			C			S	

# Skagit County Shaded Relief



## Washington State



### Legend

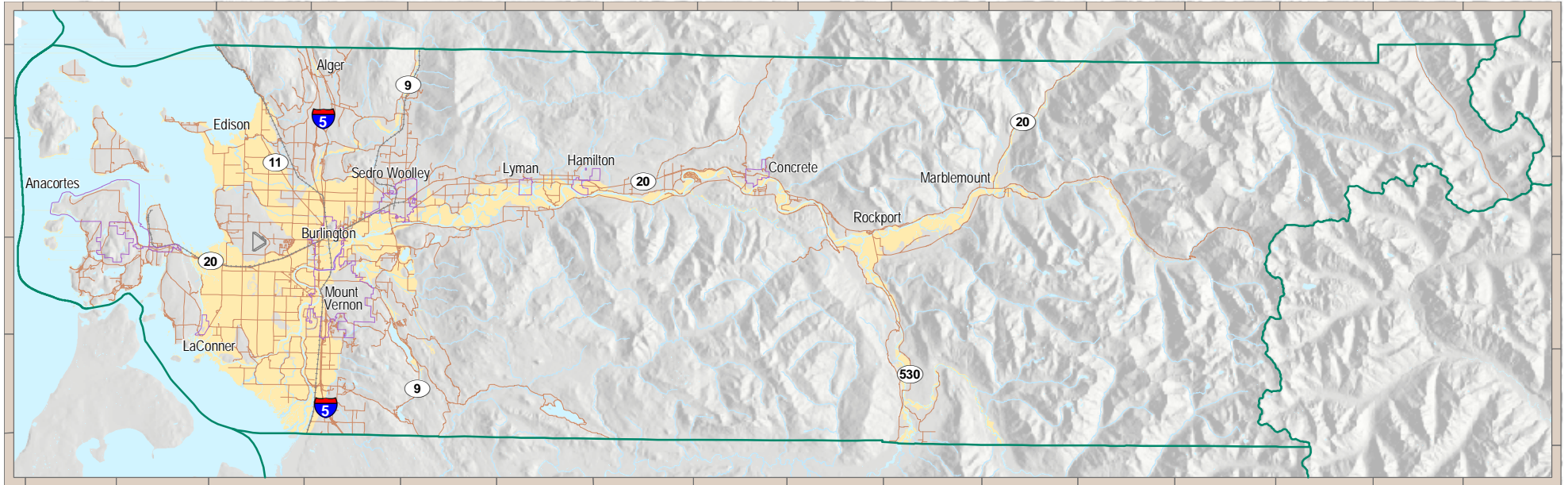
-  County Boundary
-  Incorporated Areas
-  Major Water Body
-  River, Creek, or Stream



This map was created from available public records and existing map sources, not from field surveys. Map features from all sources have been adjusted to achieve a "best fit" registration to the Ownership Parcels Map. While great care was taken in this process, maps from different sources rarely agree as to the precise location of geographic features. The relative positioning of map features to one another results from combining different map sources without field "ground truthing."

Map Created: 11-3-2008

# Skagit County FEMA Q3 100 Year Floodplain



## Washington State



## Legend

-  FEMA Q3 100 year Floodplain
-  Major Water Body
-  County Boundary
-  Incorporated Areas
-  River, Creek, or Stream

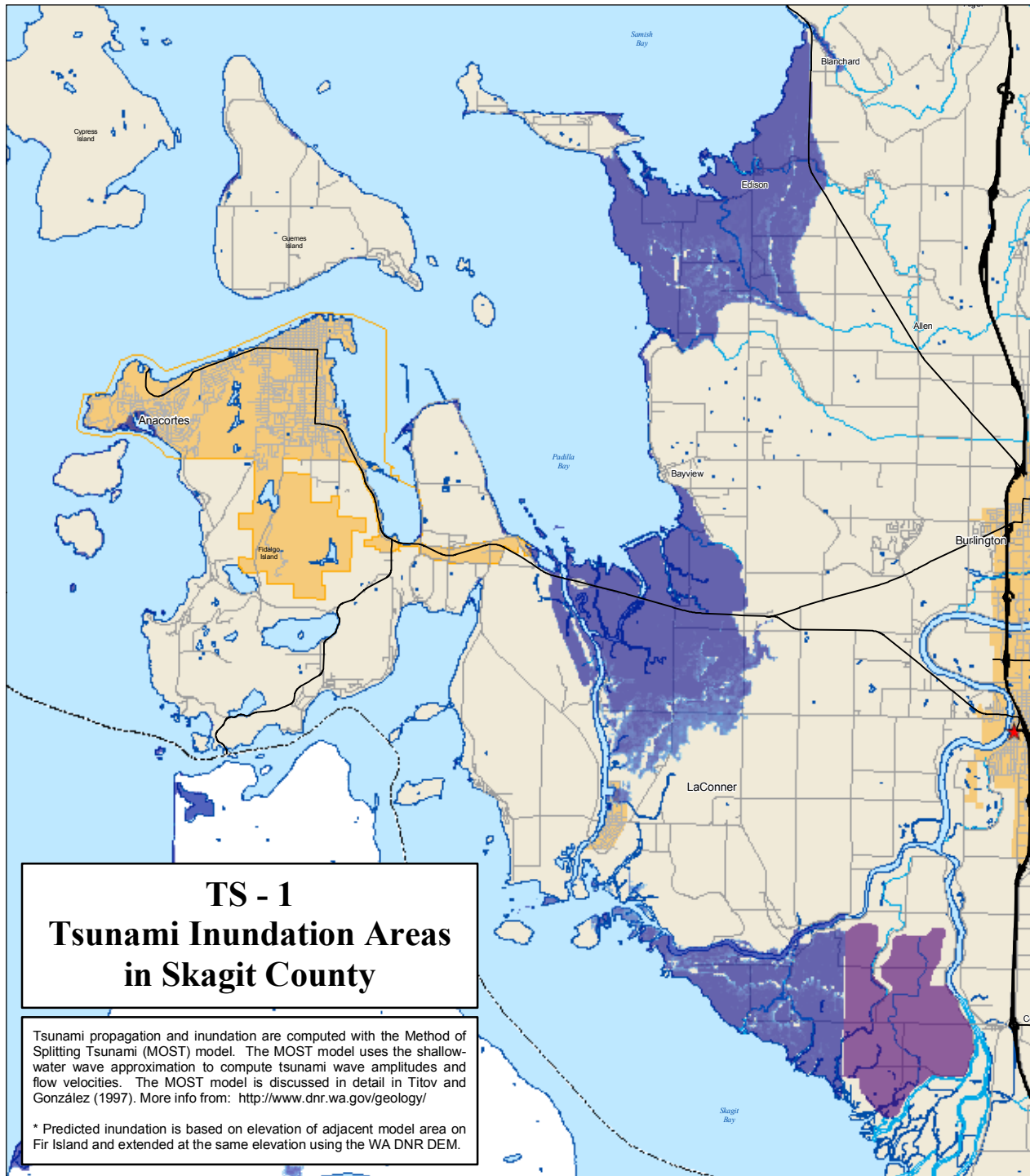
### NOTE:

In its continuing efforts to perform hazards mitigation and to improve customer service by expanding the availability of flood risk data, the Federal Emergency Management Agency (FEMA) has released the Q3 Flood Data product. Designed to support FEMA's Response and Recovery activities and flood insurance policy marketing initiatives, Q3 Flood Data will be used in floodplain management, hazards analysis, and risk assessment activities. The product contains a subset of information derived from paper Flood Insurance Rate Maps (FIRMs). While the digital data were developed to support floodplain management activities, they do not replace the paper FIRMs

This map was created from available public records and existing map sources, not from field surveys. Map features from all sources have been adjusted to achieve a "best fit" registration to the Ownership Parcels Map. While great care was taken in this process, maps from different sources rarely agrees as to the precise location of geographic features. The relative positioning of map features to one another results from combining different map sources without field "ground truthing."



Map Created: 11-3-2008



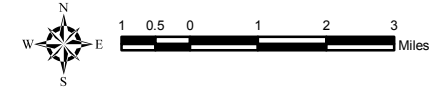
# TS - 1 Tsunami Inundation Areas in Skagit County

Tsunami propagation and inundation are computed with the Method of Splitting Tsunami (MOST) model. The MOST model uses the shallow-water wave approximation to compute tsunami wave amplitudes and flow velocities. The MOST model is discussed in detail in Titov and González (1997). More info from: <http://www.dnr.wa.gov/geology/>

\* Predicted inundation is based on elevation of adjacent model area on Fir Island and extended at the same elevation using the WA DNR DEM.

## LEGEND

- ★ County Seat
  - ⬡ County Boundary
  - ⬢ Incorporated Area
  - ⬢ Major Water Body
  - ⬢ River, Creek, or Stream
- |                  |                    |
|------------------|--------------------|
| Inundation Depth |                    |
|                  | High : 10.605982   |
|                  | Low : 0.000000     |
|                  | Tsunami Predicted* |



### Data Source Information:

County Boundary, Incorporated Areas, Hydrology  
and Road centerlines are maintained by Skagit  
County GIS.



Map Created: 08-12-2008

This map was created from available public records and existing map sources, not from field surveys. Map features from all sources have been adjusted to achieve a "best fit" registration to the Ownership Parcels Map. While great care was taken in this process, maps from different sources rarely agree as to the precise location of geographic features. The relative positioning of map features to one another results from combining different map sources without field "ground truthing."

### Washington State

