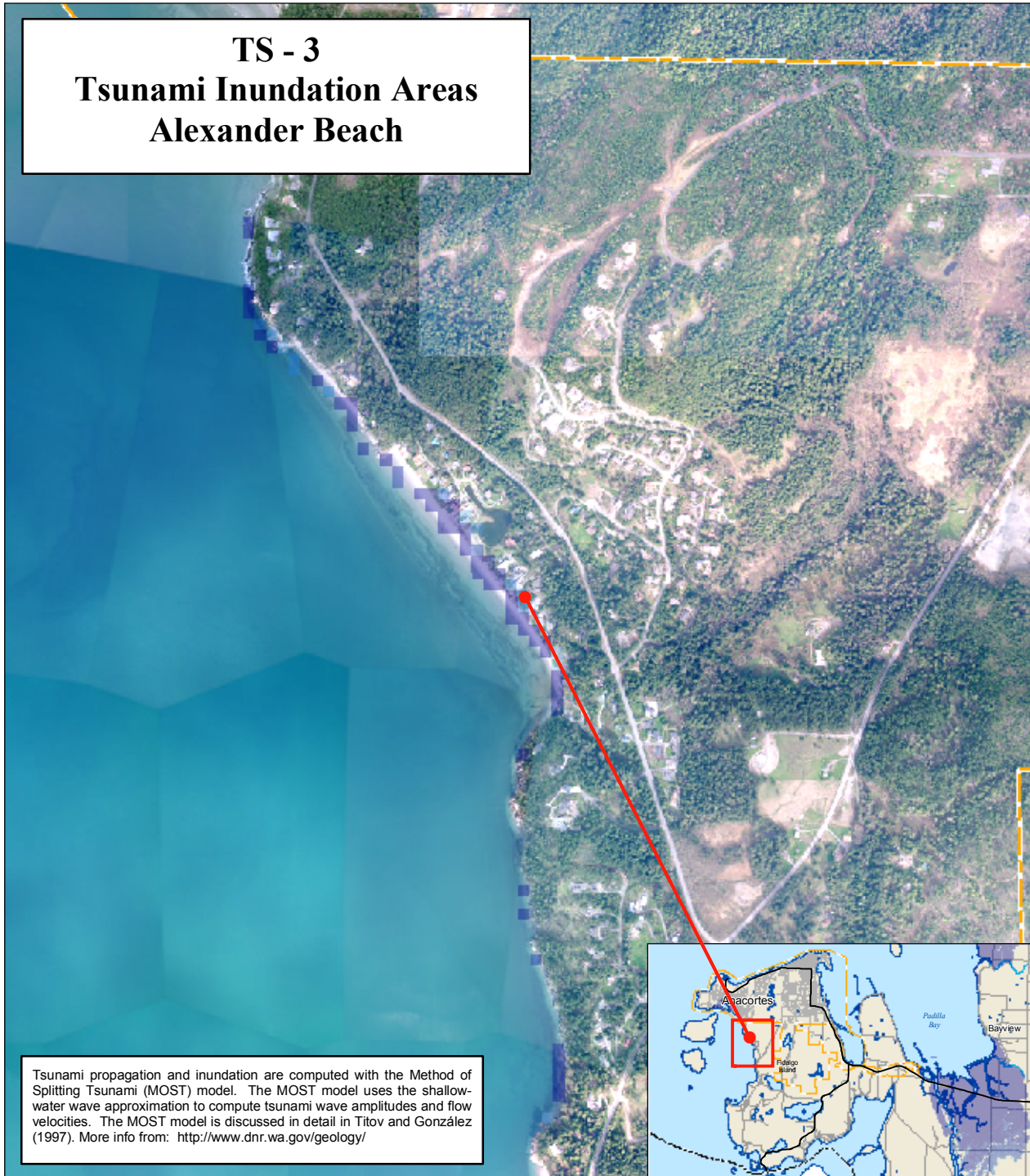
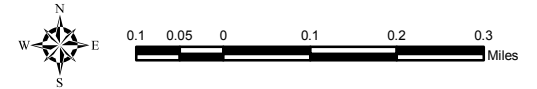
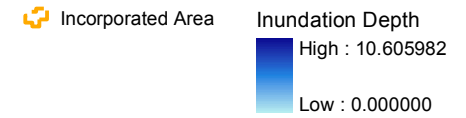


# TS - 3 Tsunami Inundation Areas Alexander Beach



Tsunami propagation and inundation are computed with the Method of Splitting Tsunami (MOST) model. The MOST model uses the shallow-water wave approximation to compute tsunami wave amplitudes and flow velocities. The MOST model is discussed in detail in Titov and González (1997). More info from: <http://www.dnr.wa.gov/geology/>

## LEGEND



### Data Source Information:

County Boundary, Incorporated Areas, Hydrology and Road centerlines are maintained by Skagit County GIS.



Map Created: 08-12-2008

This map was created from available public records and existing map sources, not from field surveys. Map features from all sources have been adjusted to achieve a "best fit" registration to the Ownership Parcels Map. While great care was taken in this process, maps from different sources rarely agree as to the precise location of geographic features. The relative positioning of map features to one another results from combining different map sources without field "ground truthing."

## Washington State

