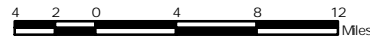
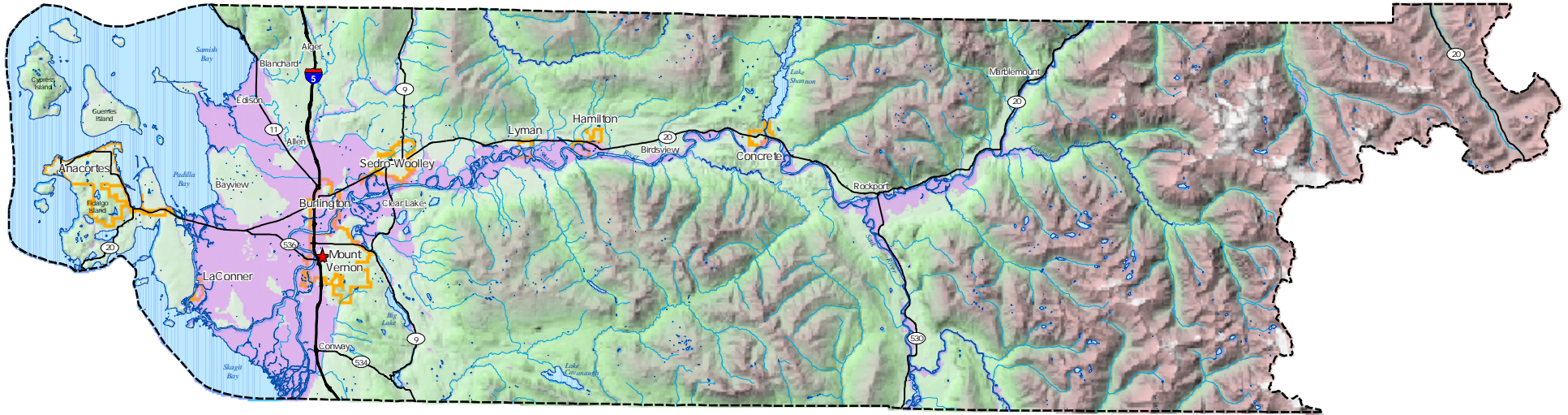


FL - 1

FEMA Firm for Skagit County

100-Year Flood Plain



Washington State



LEGEND

- ★ County Seat
- Interstate
- State Route
- FEMA 100-Year Flood Plain
- County Boundary
- Incorporated Area
- Major Water Body
- River, Creek, or Stream

This map was created from available public records and existing map sources, not from field surveys. Map features from all sources have been adjusted to achieve a "best fit" registration to the Ownership Parcels Map. While great care was taken in this process, maps from different sources rarely agree as to the precise location of geographic features. The relative positioning of map features to one another results from combining different map sources without field "ground truthing."

Data Source Information:

County Boundary, Incorporated Areas, Hydrology and Road centerlines are maintained by Skagit County GIS. Flood plain data provided by the Federal Emergency Management Agency and is dated September 1996.



Map Created: 3-10-2003
Map Updated: 8-4-2003