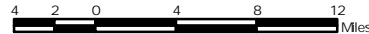
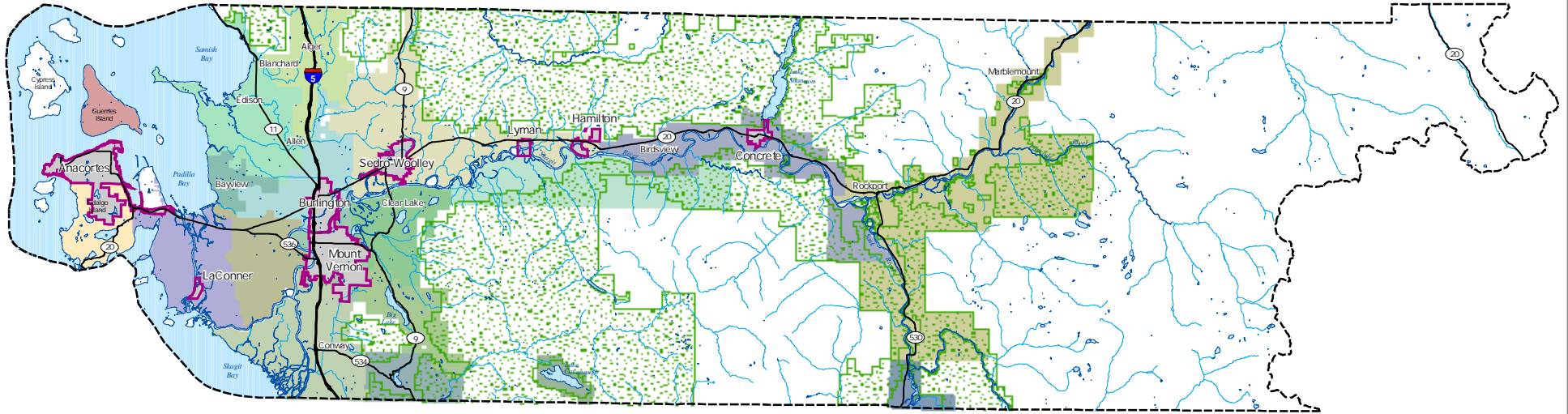


FIRE - 2

Skagit County Fire Districts and Industrial Forest Lands



Washington State



LEGEND

Interstate	15	4
State Route	16	5
County Boundary	17	6
Incorporated Area	19	7
Major Water Body	2	8
River, Creek, or Stream	13	9
Industrial Forest	14	3
		Sedro-Woolley
		No Fire Protection

This map was created from available public records and existing map sources, not from field surveys. Map features from all sources have been adjusted to achieve a "best fit" registration to the Ownership Parcels Map. While great care was taken in this process, maps from different sources rarely agree as to the precise location of geographic features. The relative positioning of map features to one another results from combining different map sources without field "ground truthing."

Data Source Information:

Fire Districts, County Boundary, Incorporated Areas, Hydrology, Land Use Designation and Road centerlines are maintained by Skagit County GIS. Land use designation generated from Skagit County Comprehensive Plan, adopted June 10th, 2002.



Map Created: 4-30-2003
Map Updated: 8-04-2003