

KNOWLEDGE

DESCRIPTION OF STATE TRUST LAND SURVEYED
THE SOUTHWEST QUARTER OF THE SOUTHWEST QUARTER OF SECTION
17, TOWNSHIP 33 NORTH, RANGE 5 EAST, W.M.
PER PERSON, WASHINGTON DEED RECORDED UNDER SKAGIT COUNTY
AUDITOR'S FILE NUMBER 140210023 AND DATED 2-10-1094
AND
THE WEST HALF OF SECTION 20, TOWNSHIP 33 NORTH, RANGE 5 EAST,
W.M.
PER COUNTY COMMISSIONERS DEED RECORDED IN SKAGIT COUNTY
VOLUME 203 OF DEEDS, PAGES 195-192 AND DATED 6-27-1945

BASIS OF BEARINGS

WASHINGTON COORDINATE SYSTEM, NAD83/2011 EPOCH 2010.00,
NORTH ZONE, DERIVED FROM AVERAGED STATIC GPS SESSIONS WITH
OPUS POST PROCESSING AND/OR WARM REAL TIME SOLUTIONS
CONVERGENCE
-1°10'17" AT CORNER N06

PROJECT DISTANCE FACTOR

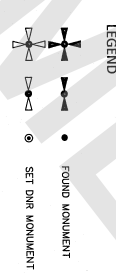
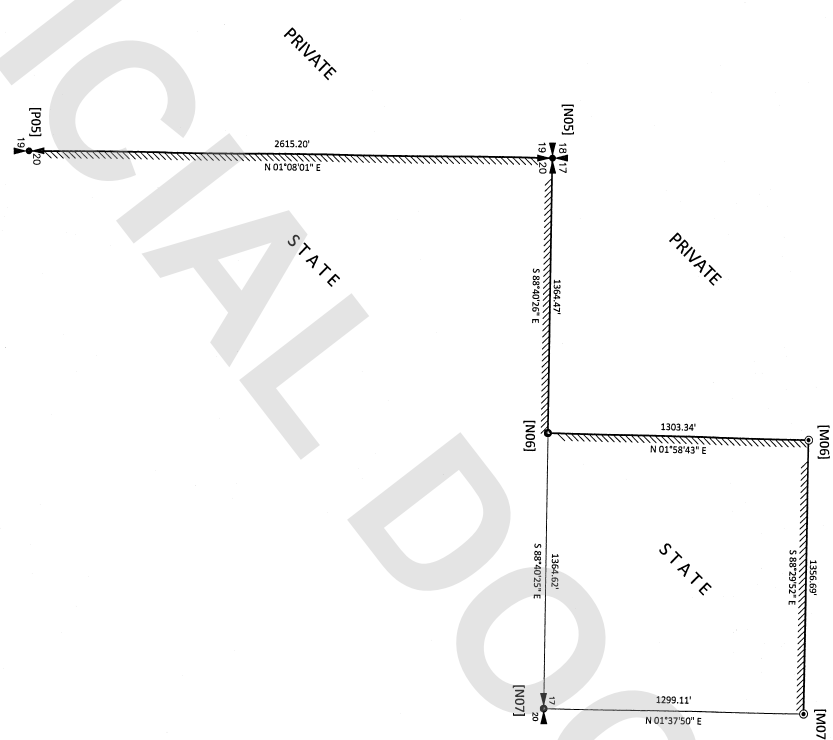
THE AREAS AND DISTANCES SHOWN ARE GRID, IN U.S. SURVEY FEET,
DIVIDE THE GRID DISTANCE BY 0.99993538 TO COMPUTE GROUND
DISTANCE.
LATITUDE FACTOR = 0.99994978
LONGITUDE FACTOR = 0.99993538
COMBINED GRID FACTOR = 0.99993538

METHOD OF HORIZONTAL CONTROL

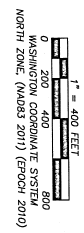
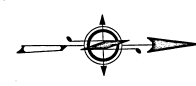
WE USED LEICA GS16 GNSS RECEIVERS TO ESTABLISH THE PRIMARY
CONTROL FOR THIS SURVEY. WHERE CELL COVERAGE ALLOWED, WE
OBTAINED REAL TIME SOLUTIONS. WHERE CELL COVERAGE WAS
WAS NOT AN OPTION, WE USED MULTIPLE STATIC SESSIONS PROCESSED
THROUGH OPUS. WE ADJUSTED THIS WITH LOCALIZED RTK WORK
THROUGH OPUS. THE SURVEY WAS CONDUCTED IN TWO PHASES. THE
FIRST PHASE WAS TO ESTABLISH THE PRIMARY CONTROL. THE SECOND
PHASE WAS TO SURVEY THE BOUNDARY. THE BOUNDARY POINTS
WERE EITHER DIRECTLY OBSERVED WITH GNSS OR MADE BY FIELD
TRAVELER USING A LEICA TS16 TOTAL STATION. TRAVELERS WERE
CALIBRATED AND USED A 100' TAPE. THE SURVEY WAS CONDUCTED
CLOSURES MET RELATIVE ACCURACY STANDARDS AS SPECIFIED IN
WAC 332.130.085.

NARRATIVE

THE PURPOSE OF THIS SURVEY IS TO POST PORTIONS OF STATE TRUST
LAND BOUNDARY, AS SHOWN
THIS SURVEY DOES NOT PURPORT TO SHOW ALL EASEMENTS OR
RECORD OR OTHERWISE



LINE POSTING:
INDICATES THAT TALL CARSONITE BOUNDARY
MONUMENTS ARE PRESENT AND ARE WITHIN
LESS THAN 300 FEET, ALONG THE INDICATED SUBDIVISION
LINE AND ARE WITHIN ON FOOT OF THE ACTUAL
SUBDIVISION LINE.



SECTION 17, TOWNSHIP 33 NORTH, RANGE 5 EAST
SE 1/4 SW 1/4
SECTION 20, TOWNSHIP 33 NORTH, RANGE 5 EAST
NW 1/4 NW 1/4, SW 1/4 NW 1/4, NE 1/4 NW 1/4

T. 33 N., R. 5 E.

AUDITOR'S INDEXING DATA

AUDITOR'S INDEXING DIAGRAM

AUDITOR'S CERTIFICATE
FILED FOR RECORD THIS 28 DAY OF March 2025
AT 10:01 AM IN BOOK OF SURVEYS AT PAGE 1
AT THE REQUEST OF THE WASHINGTON STATE DEPARTMENT OF
NATURAL RESOURCES.

SURVEYOR'S CERTIFICATE
THIS MAP CORRECTLY REPRESENTS A SURVEY MADE BY ME OR
UNDER MY DIRECTION IN CONFORMANCE WITH THE REQUIREMENTS
OF THE SURVEY RECORDING ACT AT THE REQUEST OF THE
WASHINGTON STATE DEPARTMENT OF NATURAL RESOURCES
IN WASHING, 2025
3-27-2025
DATE

SKAGIT COUNTY AUDITOR

BRIAN J. WILLIAMS, P.L.S.#7613



A SURVEY IN SECTIONS 17 & 20
TOWNSHIP 33 NORTH, RANGE 5 EAST, W.M.
SKAGIT COUNTY
STATE OF WASHINGTON
DEPARTMENT OF NATURAL RESOURCES
LAND SURVEY SECTION-P.O. BOX 47030
OLYMPIA, WASHINGTON 98504-7030 (360)902-1206

F.M.# 2378
SHEET 1 OF 2

LIST OF PERTINENT SURVEY DOCUMENTS USED FOR REFERENCE
RECORDING INFORMATION REFERS TO THE RECORDS OF THE SKAGIT COUNTY
AUDITOR

- (1) GENERAL AND OFFICE SURVEY OF THE WEST HALF OF TOWNSHIP 33 NORTH, RANGE 5 EAST BY U.S. DEPUTY SURVEYOR JAMES T. BERRY UNDER HIS CONTRACT NO. 286 DATED 12-15-1882
- (2) DNR CORNER VISIT SHEET FOR SECTION 19, ON FILE WITH THE DNR PUBLIC LAND SURVEY OFFICE IN OLYMPIA, RELEVANT DATES OF 1994, 1982
- (3) SCOTT PAPER COMPANY CORNER RECORD FOR CORNER NO. 6 ON FILE WITH THE DNR PUBLIC LAND SURVEY OFFICE IN OLYMPIA, DATED 1-18-1882
- (4) GEORGIA PACIFIC WORK MAP, ON FILE WITH THE DNR PUBLIC LAND SURVEY OFFICE IN OLYMPIA, DATED 1-18-1882
- (5) SHORT PLAT NO. 36-80 BY DON SEMARU, P.S. 9622, RECORDED UNDER AEN 800220014 AND DATED 5-23-1980
- (6) REVISED SHORT PLAT NO. 36-80 BY DON SEMARU, P.S. 9622, RECORDED UNDER AEN 820129042 AND DATED 1-28-1982
- (7) LAND CORNER RECORD FOR CORNER NO5 BY M.A. KINAWAY, P.S. 11977, RECORDED UNDER AEN 850306018 AND DATED 3-6-1985
- (8) LAND CORNER RECORD FOR CORNER NO5 M.A. KINAWAY, P.S. 11977, RECORDED UNDER AEN 850306017 AND DATED 3-6-1985
- (9) RECORD OF SURVEY BY SKAGIT SURVEYORS, INC. (JOHN ABERNETHY, P.S. 11761), RECORDED UNDER AEN 860227086 AND DATED 3-27-1989
- (10) GEORGIA PACIFIC CORNER INDEX FOR SECTION 17, ON FILE WITH THE DNR PUBLIC LAND SURVEY OFFICE IN OLYMPIA, RELEVANT CORNERS UNDATED
- (11) GEORGIA PACIFIC CORNER INDEX FOR SECTION 20, ON FILE WITH THE DNR PUBLIC LAND SURVEY OFFICE IN OLYMPIA, RELEVANT CORNERS UNDATED
- (12) SHORT PLAT NO. 60-82 BY SKAGIT SURVEYORS, INC. (JOHN ABERNETHY, P.S. 11761), RECORDED UNDER AEN 910703007 AND DATED 7-3-1991
- (13) RECORD OF SURVEY BY SKAGIT SURVEYORS, INC. (JOHN ABERNETHY, P.S. 11761), RECORDED UNDER AEN 930310014 AND DATED 8-10-1993
- (14) SHORT PLAT NO. 86-008 BY BRUCE G. LIESER, P.S. 2290, RECORDED UNDER AEN 97015004 AND DATED 7-16-1997
- (15) RECORD OF SURVEY BY PACIFIC SURVEYING & ENGINEERING (JAMM S. MORROW, P.S. 40923), RECORDED UNDER AEN 20061250073 AND DATED 1-25-2006
- (16) RECORD OF SURVEY BY DUNCANSON COMPANY, INC. (KEVIN J. WALKER, P.S. 41028), RECORDED UNDER AEN 20071218009 AND DATED 12-18-2007
- (17) RECORD OF SURVEY BY EASTSIDE CONSULTANTS, INC. (STEVEN W. WITZ, P.S. 27268), RECORDED UNDER AEN 20084160001 AND DATED 4-16-2009
- (18) RECORD OF SURVEY BY PACIFIC SURVEYING & ENGINEERING (JAMM J. NELSON, P.S. 41952), RECORDED UNDER AEN 20201202005 AND DATED 12-2-2020
- (19) AMENDED RECORD OF SURVEY BY PACIFIC SURVEYING & ENGINEERING (JAMM S. MORROW, P.S. 40923), RECORDED UNDER AEN 20201300070 AND DATED 1-30-2025
- (20) DNR FINAL MAP NUMBER 467, ON FILE WITH THE DNR PUBLIC LAND SURVEY OFFICE IN OLYMPIA AND DATED AUGUST 1983
- (21) RECORD OF SURVEY BY PARAGON LAND SURVEYING (JAMM B. FORSGREN, P.S. 14473), RECORDED UNDER AEN 801209040 AND DATED 12-4-1980
- (22) SKAGIT COUNTY FIELDBOOK 666 SHOWING CLANSTRAL THIS IS SECTION 17 AND NEARBY VICINITY IN 1915. FIELD CREW INCLUDES GILLEY, DAVIS, CALFELED. NOTES HELD AT SKAGIT COUNTY ENGINEERING DEPT.

CORNER NOTES

ALL CORNER NOTES REFER TO TOWNSHIP 33 NORTH, RANGE 5 EAST, W.M.

(M069) SOUTHWEST SIXTEENTH CORNER OF SECTION 17

ACCEPTED FOUND PIPE, REPLACED WITH ALUMINUM MONUMENT

HISTORY:

- 1915 SKAGIT COUNTY FIELDNOTES SHOW A SUBDIVISION OF SECTION 17 AND A SET IRON PIPE(22)
- UNDATED GEORGIA PACIFIC WORK MAP SHOWS A PIPE(4)
- 1982 RECORD OF SURVEY SHOWS A ROUND 1-1/4" IRON PIPE(10)
- 2006 RECORD OF SURVEY SHOWS A ROUND 1" PIPE AND REPLACED WITH AN ALUMINUM MONUMENT(19)
- 2025 AMENDED RECORD OF SURVEY CLARIFIES THAT THE 1" PIPE WAS LEFT IN PLACE(19)

FIELD SEARCH:

ON 1-4-2025, WE TIED AND ACCEPTED A 3/4" OUTSIDE DIAMETER IRON PIPE, 1" P 1.4. THE PIPE WAS THEN REPLACED THE PIPE WITH AN ALUMINUM BEHN BEN MONUMENT MARKED 2005 PRE ALONGSIDE

PERPETUATION:

A 1/2" IRON BEARS W/2" AT 44.33' TO A STEEL NAIL, THAT IS 2.1' UP ON THE SOUTHWEST SIDE

A 1/2" IRON BEARS 57'W AT 32.44' TO A STEEL NAIL, THAT IS 1.5' UP ON THE NORTHWEST SIDE

A 27" CEDAR BEARS N15'W AT 1.41' TO A STEEL NAIL, THAT IS 2.9' UP ON THE NORTHWEST SIDE

SET CORNERITE POST 1.5 NORTH
FIELDBOOK 7165, PAGE 77

CORNER HISTORY AND DESCRIPTIONS

(M07) CENTER SOUTH SIXTEENTH CORNER OF SECTION 17

ACCEPTED FOUND PIPE, REPLACED WITH ALUMINUM MONUMENT

HISTORY:

- 1915 SKAGIT COUNTY FIELDNOTES SHOW A SUBDIVISION OF SECTION 17 AND A SET IRON PIPE(22)
- UNDATED GEORGIA PACIFIC CORNER SHEET SHOWS A 3/4" PIPE(10)

FIELD SEARCH:

ON 1-4-2025, WE TIED AND ACCEPTED A 3/4" IRON PIPE, 1" P. WE REPLACED THE PIPE WITH AN ALUMINUM BEHN BEN MONUMENT WITH 1-1/4" ALUMINUM CAP, MARKED WITH CORNER DESIGNATION, 2025 AND 1.5

PERPETUATION:

A 1/2" IRON BEARS W/2" AT 11.17' TO A STEEL NAIL, THAT IS 1.9' UP ON THE NORTHWEST SIDE

A 1/2" IRON BEARS 59' E AT 7.42' TO A STEEL NAIL, THAT IS 1.7' UP ON THE SOUTHWEST SIDE

A 27" CEDAR BEARS W20' W AT 2.99' TO A STEEL NAIL, THAT 2.7' UP ON THE SOUTHWEST SIDE

SET CORNERITE POST 1 NORTH
FIELDBOOK 7165, PAGE 80.81

(M09) SECTION CORNER COMMON TO SECTIONS 17, 18, 19, 20

FOUND CARVED PIPE

HISTORY:

- 1982 SURVEY SET A HEAVY LOCK POST FOR CORNER FROM WHICH BEARS:
- A 1/2" CEDAR, N/2" AT 19 LINGS (12.5')
- A 1/2" CEDAR, S/2" AT 31 LINGS (63.8')
- A 1/2" CEDAR, N/2" AT 22 LINGS (45.2')
- 1915 COUNTY FIELDNOTES SHOW A ROUND STAKE AND B.T.S. SET 1-1/4" PIPE(22)
- 1982 SCOTT PAPER CORNER INDEX SHOWS AN IRON POST AND A STATE DNR TAG DATED 1946 AND
- 1980 RECORD OF SURVEY SHOWS A 1" IRON PIPE(6)
- 1982 RECORD OF SURVEY SHOWS A 1" IRON PIPE(6)
- 1982 RECORD OF SURVEY SHOWS A 1" IRON PIPE(6)
- 1984 LAND CORNER RECORD REPLACES EXISTING IRON PIPE WITH CARVED IRON PIPE, NOTES VIEWIT
- AND PATTERN MATCHING OTHER POSSIBLE B.T.S.
- 1982 RECORD OF SURVEY SHOWS A CALCULATED CORNER(13)
- 1982 RECORD OF SURVEY SHOWS AN IRON PIPE PER 1973 SET(14)
- 2006 RECORD OF SURVEY SHOWS A CALCULATED CORNER(13)
- 2025 RECORD OF SURVEY SHOWS A SYMBOL(19)

FIELD SEARCH:

ON 12-5-2024, WE TIED AND ACCEPTED A 1-1/2" IRON PIPE WITH 3" DNR BRASS CAP MARKED WITH CORNER DESIGNATION AND THE YEAR 1982. CAP IS FLUSH WITH GROUND SURFACE.

PERPETUATION:

A 1/2" IRON BEARS W/2" AT 13.65' TO A STEEL NAIL, THAT IS 1.9' UP ON THE NORTHWEST SIDE

A 1/2" IRON BEARS 57'W AT 16.4' TO A STEEL NAIL, THAT IS 1.5' UP ON THE NORTHWEST SIDE

A 27" CEDAR BEARS N15'W AT 6.78' TO A STEEL NAIL, THAT IS 1.5' UP ON THE NORTHWEST SIDE

SET CORNERITE POST 1 NORTH
FIELDBOOK 7165, PAGE 34.35

(M08) WEST SIXTEENTH CORNER COMMON TO SECTIONS 17, 20

FOUND ALUMINUM MONUMENT

HISTORY:

- 1915 SKAGIT COUNTY FIELDNOTES SHOW A SUBDIVISION OF SECTION 17 AND A SET IRON PIPE(22)
- 1982 RECORD OF SURVEY SHOWS A ROUND 1-1/4" IRON PIPE(10)
- UNDATED GEORGIA PACIFIC CORNER SHEET SHOWS A 3/4" PIPE(10)
- 2006 RECORD OF SURVEY SHOWS A ROUND PIPE REPLACED WITH ALUMINUM MONUMENT(19)

FIELD SEARCH:

ON 1-4-2025, WE TIED AND ACCEPTED AN ALUMINUM BEHN BEN MONUMENT MARKED 2005 PRE ALONGSIDE

PERPETUATION:

A 27" CEDAR BEARS W/2" AT 53.15' TO A STEEL NAIL, THAT IS 2.1' UP ON THE EAST SIDE

A 27" CEDAR BEARS 82' E AT 33.11' TO A STEEL NAIL, THAT IS 1.5' UP ON THE SOUTHWEST SIDE

A 1/2" IRON BEARS 58'W AT 47.32' TO A STEEL NAIL, THAT IS 1.5' UP ON THE NORTH SIDE

SET CORNERITE POST 1 NORTH
FIELDBOOK 7165, PAGE 44.45

(M07) QUARTER CORNER COMMON TO SECTIONS 17, 20

FOUND REBAR

HISTORY:

- THE SKAGIT COUNTY FIELDNOTES SHOW A ROUND OLD LINE TIEB AND A FOUND BT WITH CORNER MARKS, SET A PIPE FOR CORNER(22)
- 1982 RECORD OF SURVEY SETS A 1-1/4" IRON ROD MARKED 19.5, 8622 BY PROPORTIONING USING PLUET
- 1982 RECORD OF SURVEY SHOWS AN IRON ROD SET FROM 1915 COUNTY SURVEY IN A DIFFERENT POSITION FROM THE ONE SET IN 1980(6)
- UNDATED GEORGIA PACIFIC CORNER SHEET SHOWS A 1/2" REBAR AND CAP SET BY SEMARU(4)
- 1988 RECORD OF SURVEY SHOWS A ROUND REBAR 8 CAP MARKED 15, 8622 AT EAST EDGE OF POWER
- 1981 RECORD OF SURVEY SHOWS A ROUND REBAR WITH PLASTIC CAP MARKED 15, 8622(17)
- 1983 RECORD OF SURVEY SHOWS A REBAR AND CAP(15)
- 2006 RECORD OF SURVEY SHOWS A ROUND REBAR AND CAP MARKED 15, 8622(17)

FIELD SEARCH:

ON 1-4-2025, WE TIED AND ACCEPTED A 1/2" REBAR WITH BROKEN, ILLEGIBLE CAP AT THE EAST EDGE OF A DIRT ROAD/WHEEL RUT/POWER LINE ACCESS ROAD. REPLACEMENT OF REBAR DID NOT SEEM FORSABLE SO WE REBARCUT IT LIBERALLY.

PERPETUATION:

- A 27" CEDAR BEARS W/2" AT 120.17' TO A STEEL NAIL, THAT IS 1.9' UP ON THE NORTHWEST SIDE
- A 27" CEDAR BEARS 84' E AT 64.67' TO A STEEL NAIL, THAT IS 2.1' UP ON THE NORTHWEST SIDE
- A 6" REBAR WITH RED PLASTIC CAP SET FLUSH BEARS STE AT 11.07
- A 6" BEARS S/2" AT 53.12
- A DUPEX NAIL 3" UP IN THE SOUTHEAST FACE OF A WOOD POWER POLE BEARS 54'W AT 53.33
- A 27" CEDAR BEARS W/2" AT 72.22' TO A STEEL NAIL, THAT IS 2.5' UP ON THE SOUTHWEST SIDE

SET CORNERITE POST 1 EAST
FIELDBOOK 7165, PAGE 85

(P05) QUARTER CORNER COMMON TO SECTIONS 19, 20

FOUND CONCRETE MONUMENT

HISTORY:

- 1982 RECORD OF SURVEY SHOWS A FOUND CONCRETE MONUMENT(19)
- 1982 RECORD OF SURVEY SHOWS A SINGLE PROPORTIONED POSTION, USES THIS TO SUBDIVIDE SECTION 19(21)
- 1983 SURVEY SHOWS A SET CONCRETE MONUMENT AT SINGLE PROPORTIONED POSTION(20)
- UNDATED GEORGIA PACIFIC CORNER SHEET SHOWS A CONG MON(11)
- 2006 RECORD OF SURVEY SHOWS A ROUND DNR PIPE AND CAP(19)
- 2006 RECORD OF SURVEY SHOWS A DNR BRASS CAP PER 2007 SURVEY OF RECORD(19)

FIELD SEARCH:

ON 12-4-2024, WE TIED AND ACCEPTED A 3" DIAMETER DNR CONCRETE MONUMENT WITH 3" BRASS CAP MARKED WITH CORNER DESIGNATION UP 0.3

PERPETUATION:

A 1/2" IRON BEARS W/2" AT 9.51' TO A STEEL NAIL, THAT IS 1.5' UP ON THE NORTHWEST SIDE

A 27" CEDAR BEARS 54'W AT 31.24' TO A STEEL NAIL, THAT IS 1.5' UP ON THE NORTHWEST SIDE

A 12" CEDAR BEARS N15'W AT 28.99' TO A STEEL NAIL, THAT IS 1.5' UP ON THE SOUTHWEST SIDE

SET CORNERITE POST 1 EAST
FIELDBOOK 7165, PAGE 14.15



A SURVEY IN SECTIONS 17 & 20
TOWNSHIP 33 NORTH, RANGE 5 EAST, W.M.
SKAGIT COUNTY

STATE OF WASHINGTON
DEPARTMENT OF NATURAL RESOURCES
LAND SURVEY SECTION - P.O. BOX 47030 OLYMPIA,
WASHINGTON 98504-7030 (360) 902-1208

"KYOHTEE" SURVEY
FIELD CREW: R. WILLIAMS, P.S.
E. THOMAS, LST
E. MARKEY
FIELD BOOK: 7165 1/09/2025
F.M.# 2378
SHEET 2 OF 2