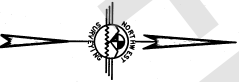
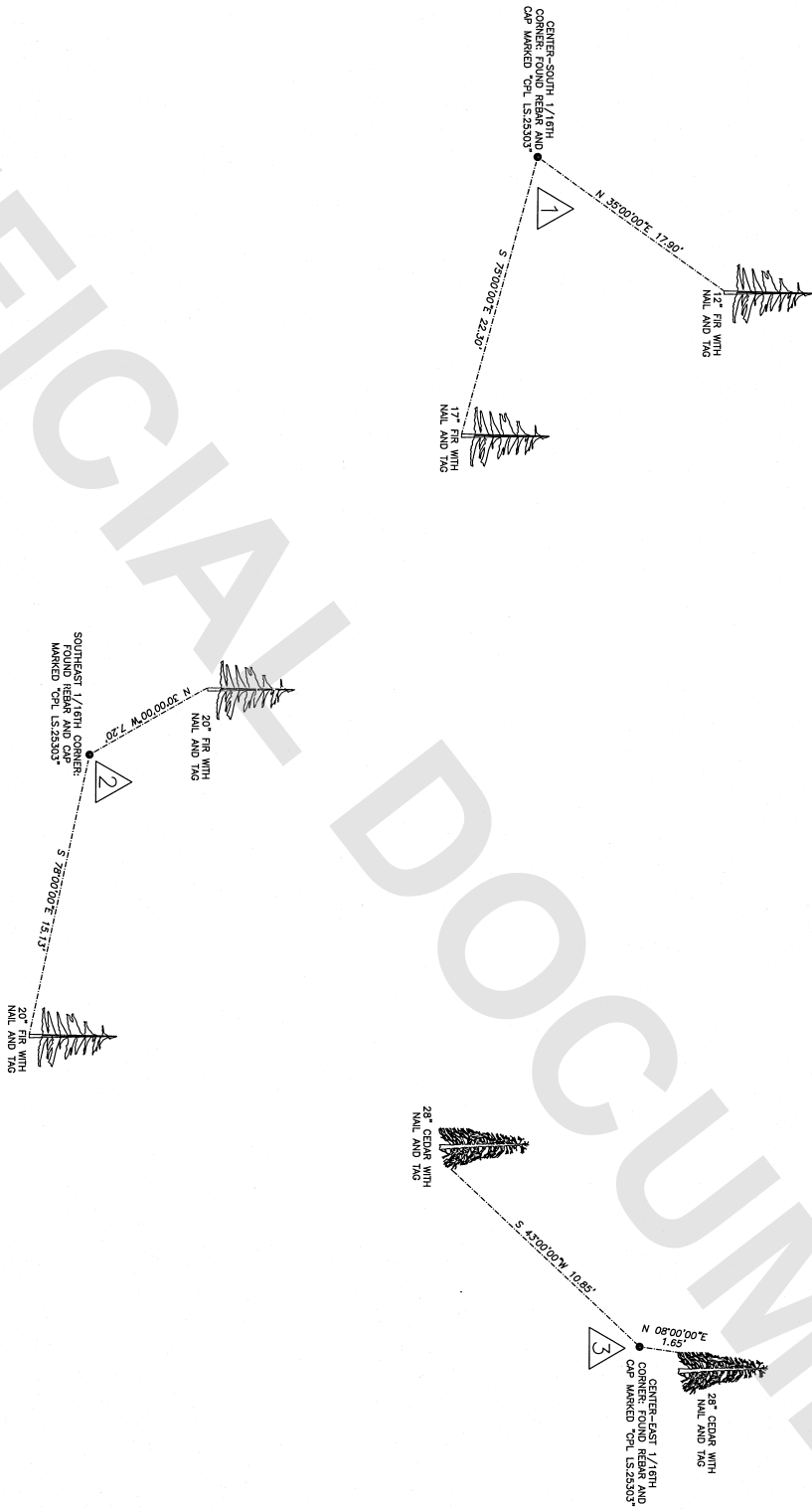


SURVEY IN SECTION 18, TOWNSHIP 35 NORTH, RANGE 9 EAST OF W.M.
SKAGIT COUNTY, WASHINGTON



NORTHWEST SURVEYING & GPS, INC.
 Jeremy M. DeMeyer, J.S. No. 50982
 Brett W. De Vries, J.S. No. 48276
 4014 17th Ave S, Everett, WA 98203
 PH: (425) 354-1500
 WWW.NWGPS.COM

DRAWN BY:	CHRIS	DATE:	07/13/2023	JOB No.:	23-034
REVIEWED BY:	JEROMEY	DWG:	35-08\183599	SHEET:	2 OF 2
		CAD:	183599.CAD		