

LEGALS

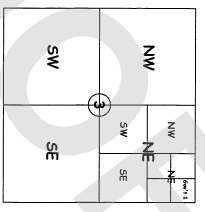
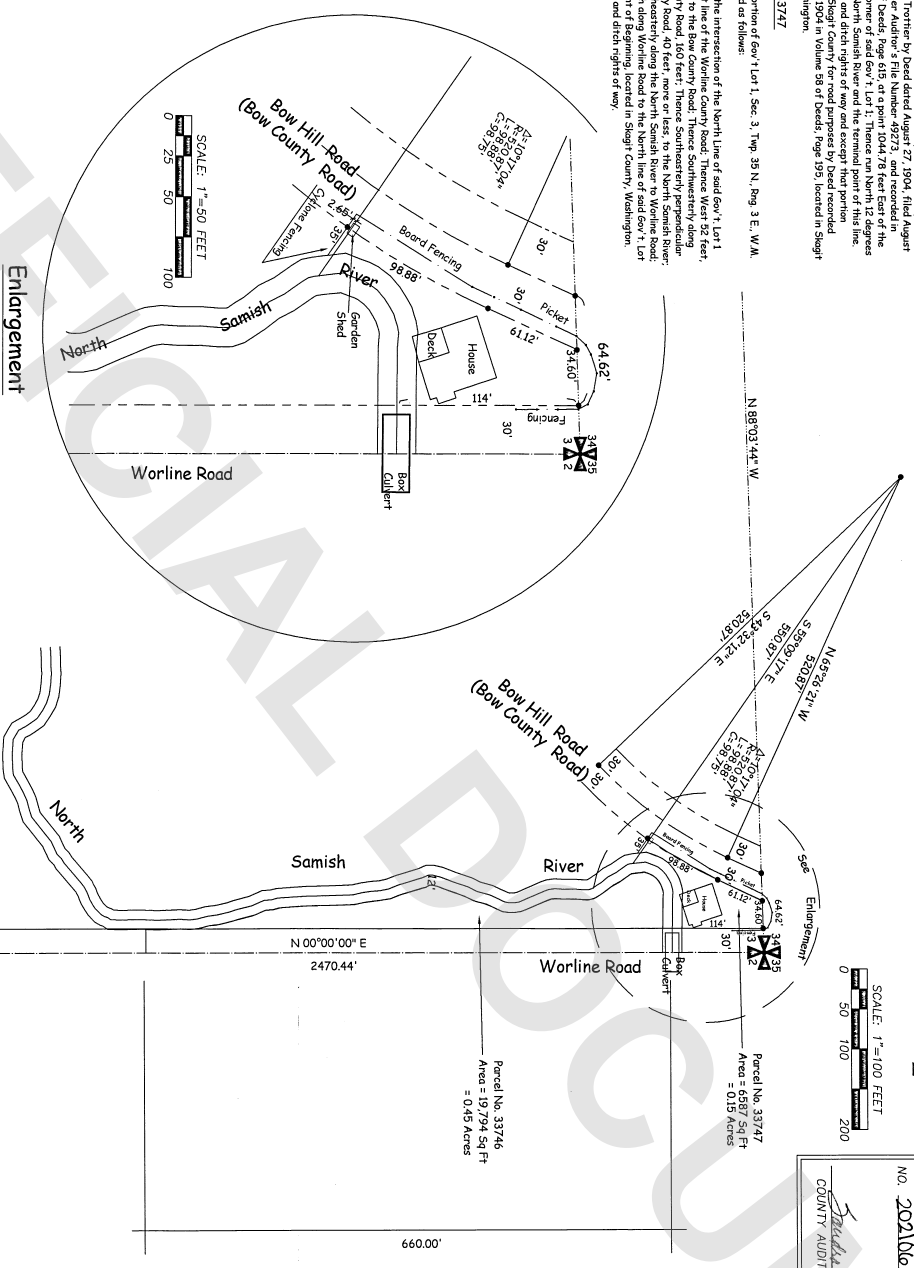
Parcel No. 33746
The North 660 feet of that portion of Gov't Lot 1, Sec. 3, Twp. 35 N.,
Rng. 3 E., W.M. lying southerly of the North Samish River and
easterly of the following described line:

Beginning at the Southeast corner of those parcels conveyed to
Samuel E. Trivette by Deed dated August 27, 1904, filed August
31, 1904, under Auditor's File Number 49273, and recorded in
Volume 57 of Deeds, Page 615, at a point 1044.78 feet East of the
Southeast corner of said Gov't Lot 1, Thence run North 12 degrees
East 1044.78 feet to the North line of said parcels, thence
Easterly along the North line of said parcels to the point of
conveyance to Shaght County for road purposes by Deed recorded
December 7, 1904 in Volume 58 of Deeds, Page 195, located in Shaght
County, Washington.

Parcel No. 33747

Also that portion of Gov't Lot 1, Sec. 3, Twp. 35 N., Rng. 3 E., W.M.
and described as follows:

Beginning at the intersection of the North line of said Gov't Lot 1
and the West line of the Worline County Road, Thence West 32 feet,
more or less, to the Bow Hill Road; Thence Southwesterly along
the Bow Hill Road to the Northwest corner of the parcels conveyed
to Bow County Road, 40 feet more or less, to the North Samish River;
Thence Northwesterly along the North Samish River to Worline Road;
Thence North along Worline Road to the North line of said Gov't Lot 1
and the point of Beginning, located in Shaght County, Washington.
EXCEPT dikes and ditch rights of way.



Sec. 3, Twp. 35 N., Rng. 3 E., W.M.
NTS



SURVEYOR'S CERTIFICATE
This map correctly represents a survey map made by me or under my direction in conformance
with the Survey Recording Act for _____ Jeff Fredlund
in Anacortes, Washington.
Jeff Fredlund
Registered Professional Land Surveyor, U.S. No. 19637
Date June 22, 2021

AUDITOR'S CERTIFICATE

FILED FOR RECORD AT THE REQUEST OF FairWeather Surveyor
FILED FOR RECORD THIS 23 DAY OF June, 2021
AT 9A MINUTES PAST 9 O'CLOCK (AM/PM) IN VOLUME
OF SURVEYS AT PAGE(S) UNDER AUDITOR'S FILE
NO. 202106230050

Shaght County Auditor BY Nancy Linares S
DEPUTY

SURVEYOR'S NOTES:

1. Bearing/Plane A.T.'s: #20160400067
2. Name of Bearing A.T.: #20160400067
3. Method of Measurement Location was by Field Survey.
4. Instrument Used: TOPCON GTS 2102 Survey No. L24902
5. The Field Survey was conducted June 12 - 16, 2021. Corners set June 15, 2021.
6. Set and verified the property corners of the property at 600' Worline Road, Parcel No. 33746 and 33747.
7. Found and used the Station Corner of 34.545 2.8 S., and the Quarter Corner of Section 28.5 of Twp. 35 North Rng. 3 East, W.M.
8. Surveyed road monumentation and located 5' Survey corners as found.
9. This survey was performed to locate the boundaries of Shaght County Parcel Nos. 33746 and 33747.
10. This survey locates all or portions of the exterior boundaries of the described parcels and does not necessarily show any or all easements, restrictions and/or reservations which may affect these parcels. FairWeather Surveyor assumes no responsibility for any encroachments other than those shown.
11. The survey notes or records the standards and guidelines set forth in the "Survey Recording Act" Chapter 59.09 RCW. The final records meet or exceed the standards contained in WAC 592-150-090.
12. This document is the property of FairWeather Surveyor and shall not be used for any purpose without the written consent of an authorized agent of FairWeather Surveyor.

LEGEND

- Set Color and Cap, 15 19637
- ◆ Position, Calculated, NOT Set.
- Building location, established by ground survey and aerial photography.
- X Calculated position to wet level
- ⊕ description distances
- ⊙ 100' (100' ± 0.00)
- ⊙ 200' (200' ± 0.00)
- ⊙ 300' (300' ± 0.00)
- ⊙ 400' (400' ± 0.00)
- ⊙ 500' (500' ± 0.00)
- ⊙ 600' (600' ± 0.00)
- ⊙ 700' (700' ± 0.00)
- ⊙ 800' (800' ± 0.00)
- ⊙ 900' (900' ± 0.00)
- ⊙ 1000' (1000' ± 0.00)
- ⊙ 1100' (1100' ± 0.00)
- ⊙ 1200' (1200' ± 0.00)
- ⊙ 1300' (1300' ± 0.00)
- ⊙ 1400' (1400' ± 0.00)
- ⊙ 1500' (1500' ± 0.00)
- ⊙ 1600' (1600' ± 0.00)
- ⊙ 1700' (1700' ± 0.00)
- ⊙ 1800' (1800' ± 0.00)
- ⊙ 1900' (1900' ± 0.00)
- ⊙ 2000' (2000' ± 0.00)
- ⊙ 2100' (2100' ± 0.00)
- ⊙ 2200' (2200' ± 0.00)
- ⊙ 2300' (2300' ± 0.00)
- ⊙ 2400' (2400' ± 0.00)
- ⊙ 2500' (2500' ± 0.00)
- ⊙ 2600' (2600' ± 0.00)
- ⊙ 2700' (2700' ± 0.00)
- ⊙ 2800' (2800' ± 0.00)
- ⊙ 2900' (2900' ± 0.00)
- ⊙ 3000' (3000' ± 0.00)
- ⊙ 3100' (3100' ± 0.00)
- ⊙ 3200' (3200' ± 0.00)
- ⊙ 3300' (3300' ± 0.00)
- ⊙ 3400' (3400' ± 0.00)
- ⊙ 3500' (3500' ± 0.00)
- ⊙ 3600' (3600' ± 0.00)
- ⊙ 3700' (3700' ± 0.00)
- ⊙ 3800' (3800' ± 0.00)
- ⊙ 3900' (3900' ± 0.00)
- ⊙ 4000' (4000' ± 0.00)
- ⊙ 4100' (4100' ± 0.00)
- ⊙ 4200' (4200' ± 0.00)
- ⊙ 4300' (4300' ± 0.00)
- ⊙ 4400' (4400' ± 0.00)
- ⊙ 4500' (4500' ± 0.00)
- ⊙ 4600' (4600' ± 0.00)
- ⊙ 4700' (4700' ± 0.00)
- ⊙ 4800' (4800' ± 0.00)
- ⊙ 4900' (4900' ± 0.00)
- ⊙ 5000' (5000' ± 0.00)
- ⊙ 5100' (5100' ± 0.00)
- ⊙ 5200' (5200' ± 0.00)
- ⊙ 5300' (5300' ± 0.00)
- ⊙ 5400' (5400' ± 0.00)
- ⊙ 5500' (5500' ± 0.00)
- ⊙ 5600' (5600' ± 0.00)
- ⊙ 5700' (5700' ± 0.00)
- ⊙ 5800' (5800' ± 0.00)
- ⊙ 5900' (5900' ± 0.00)
- ⊙ 6000' (6000' ± 0.00)
- ⊙ 6100' (6100' ± 0.00)
- ⊙ 6200' (6200' ± 0.00)
- ⊙ 6300' (6300' ± 0.00)
- ⊙ 6400' (6400' ± 0.00)
- ⊙ 6500' (6500' ± 0.00)
- ⊙ 6600' (6600' ± 0.00)
- ⊙ 6700' (6700' ± 0.00)
- ⊙ 6800' (6800' ± 0.00)
- ⊙ 6900' (6900' ± 0.00)
- ⊙ 7000' (7000' ± 0.00)
- ⊙ 7100' (7100' ± 0.00)
- ⊙ 7200' (7200' ± 0.00)
- ⊙ 7300' (7300' ± 0.00)
- ⊙ 7400' (7400' ± 0.00)
- ⊙ 7500' (7500' ± 0.00)
- ⊙ 7600' (7600' ± 0.00)
- ⊙ 7700' (7700' ± 0.00)
- ⊙ 7800' (7800' ± 0.00)
- ⊙ 7900' (7900' ± 0.00)
- ⊙ 8000' (8000' ± 0.00)
- ⊙ 8100' (8100' ± 0.00)
- ⊙ 8200' (8200' ± 0.00)
- ⊙ 8300' (8300' ± 0.00)
- ⊙ 8400' (8400' ± 0.00)
- ⊙ 8500' (8500' ± 0.00)
- ⊙ 8600' (8600' ± 0.00)
- ⊙ 8700' (8700' ± 0.00)
- ⊙ 8800' (8800' ± 0.00)
- ⊙ 8900' (8900' ± 0.00)
- ⊙ 9000' (9000' ± 0.00)
- ⊙ 9100' (9100' ± 0.00)
- ⊙ 9200' (9200' ± 0.00)
- ⊙ 9300' (9300' ± 0.00)
- ⊙ 9400' (9400' ± 0.00)
- ⊙ 9500' (9500' ± 0.00)
- ⊙ 9600' (9600' ± 0.00)
- ⊙ 9700' (9700' ± 0.00)
- ⊙ 9800' (9800' ± 0.00)
- ⊙ 9900' (9900' ± 0.00)
- ⊙ 10000' (10000' ± 0.00)
- ⊙ 10100' (10100' ± 0.00)
- ⊙ 10200' (10200' ± 0.00)
- ⊙ 10300' (10300' ± 0.00)
- ⊙ 10400' (10400' ± 0.00)
- ⊙ 10500' (10500' ± 0.00)
- ⊙ 10600' (10600' ± 0.00)
- ⊙ 10700' (10700' ± 0.00)
- ⊙ 10800' (10800' ± 0.00)
- ⊙ 10900' (10900' ± 0.00)
- ⊙ 11000' (11000' ± 0.00)
- ⊙ 11100' (11100' ± 0.00)
- ⊙ 11200' (11200' ± 0.00)
- ⊙ 11300' (11300' ± 0.00)
- ⊙ 11400' (11400' ± 0.00)
- ⊙ 11500' (11500' ± 0.00)
- ⊙ 11600' (11600' ± 0.00)
- ⊙ 11700' (11700' ± 0.00)
- ⊙ 11800' (11800' ± 0.00)
- ⊙ 11900' (11900' ± 0.00)
- ⊙ 12000' (12000' ± 0.00)
- ⊙ 12100' (12100' ± 0.00)
- ⊙ 12200' (12200' ± 0.00)
- ⊙ 12300' (12300' ± 0.00)
- ⊙ 12400' (12400' ± 0.00)
- ⊙ 12500' (12500' ± 0.00)
- ⊙ 12600' (12600' ± 0.00)
- ⊙ 12700' (12700' ± 0.00)
- ⊙ 12800' (12800' ± 0.00)
- ⊙ 12900' (12900' ± 0.00)
- ⊙ 13000' (13000' ± 0.00)
- ⊙ 13100' (13100' ± 0.00)
- ⊙ 13200' (13200' ± 0.00)
- ⊙ 13300' (13300' ± 0.00)
- ⊙ 13400' (13400' ± 0.00)
- ⊙ 13500' (13500' ± 0.00)
- ⊙ 13600' (13600' ± 0.00)
- ⊙ 13700' (13700' ± 0.00)
- ⊙ 13800' (13800' ± 0.00)
- ⊙ 13900' (13900' ± 0.00)
- ⊙ 14000' (14000' ± 0.00)
- ⊙ 14100' (14100' ± 0.00)
- ⊙ 14200' (14200' ± 0.00)
- ⊙ 14300' (14300' ± 0.00)
- ⊙ 14400' (14400' ± 0.00)
- ⊙ 14500' (14500' ± 0.00)
- ⊙ 14600' (14600' ± 0.00)
- ⊙ 14700' (14700' ± 0.00)
- ⊙ 14800' (14800' ± 0.00)
- ⊙ 14900' (14900' ± 0.00)
- ⊙ 15000' (15000' ± 0.00)
- ⊙ 15100' (15100' ± 0.00)
- ⊙ 15200' (15200' ± 0.00)
- ⊙ 15300' (15300' ± 0.00)
- ⊙ 15400' (15400' ± 0.00)
- ⊙ 15500' (15500' ± 0.00)
- ⊙ 15600' (15600' ± 0.00)
- ⊙ 15700' (15700' ± 0.00)
- ⊙ 15800' (15800' ± 0.00)
- ⊙ 15900' (15900' ± 0.00)
- ⊙ 16000' (16000' ± 0.00)
- ⊙ 16100' (16100' ± 0.00)
- ⊙ 16200' (16200' ± 0.00)
- ⊙ 16300' (16300' ± 0.00)
- ⊙ 16400' (16400' ± 0.00)
- ⊙ 16500' (16500' ± 0.00)
- ⊙ 16600' (16600' ± 0.00)
- ⊙ 16700' (16700' ± 0.00)
- ⊙ 16800' (16800' ± 0.00)
- ⊙ 16900' (16900' ± 0.00)
- ⊙ 17000' (17000' ± 0.00)
- ⊙ 17100' (17100' ± 0.00)
- ⊙ 17200' (17200' ± 0.00)
- ⊙ 17300' (17300' ± 0.00)
- ⊙ 17400' (17400' ± 0.00)
- ⊙ 17500' (17500' ± 0.00)
- ⊙ 17600' (17600' ± 0.00)
- ⊙ 17700' (17700' ± 0.00)
- ⊙ 17800' (17800' ± 0.00)
- ⊙ 17900' (17900' ± 0.00)
- ⊙ 18000' (18000' ± 0.00)
- ⊙ 18100' (18100' ± 0.00)
- ⊙ 18200' (18200' ± 0.00)
- ⊙ 18300' (18300' ± 0.00)
- ⊙ 18400' (18400' ± 0.00)
- ⊙ 18500' (18500' ± 0.00)
- ⊙ 18600' (18600' ± 0.00)
- ⊙ 18700' (18700' ± 0.00)
- ⊙ 18800' (18800' ± 0.00)
- ⊙ 18900' (18900' ± 0.00)
- ⊙ 19000' (19000' ± 0.00)
- ⊙ 19100' (19100' ± 0.00)
- ⊙ 19200' (19200' ± 0.00)
- ⊙ 19300' (19300' ± 0.00)
- ⊙ 19400' (19400' ± 0.00)
- ⊙ 19500' (19500' ± 0.00)
- ⊙ 19600' (19600' ± 0.00)
- ⊙ 19700' (19700' ± 0.00)
- ⊙ 19800' (19800' ± 0.00)
- ⊙ 19900' (19900' ± 0.00)
- ⊙ 20000' (20000' ± 0.00)
- ⊙ 20100' (20100' ± 0.00)
- ⊙ 20200' (20200' ± 0.00)
- ⊙ 20300' (20300' ± 0.00)
- ⊙ 20400' (20400' ± 0.00)
- ⊙ 20500' (20500' ± 0.00)
- ⊙ 20600' (20600' ± 0.00)
- ⊙ 20700' (20700' ± 0.00)
- ⊙ 20800' (20800' ± 0.00)
- ⊙ 20900' (20900' ± 0.00)
- ⊙ 21000' (21000' ± 0.00)
- ⊙ 21100' (21100' ± 0.00)
- ⊙ 21200' (21200' ± 0.00)
- ⊙ 21300' (21300' ± 0.00)
- ⊙ 21400' (21400' ± 0.00)
- ⊙ 21500' (21500' ± 0.00)
- ⊙ 21600' (21600' ± 0.00)
- ⊙ 21700' (21700' ± 0.00)
- ⊙ 21800' (21800' ± 0.00)
- ⊙ 21900' (21900' ± 0.00)
- ⊙ 22000' (22000' ± 0.00)
- ⊙ 22100' (22100' ± 0.00)
- ⊙ 22200' (22200' ± 0.00)
- ⊙ 22300' (22300' ± 0.00)
- ⊙ 22400' (22400' ± 0.00)
- ⊙ 22500' (22500' ± 0.00)
- ⊙ 22600' (22600' ± 0.00)
- ⊙ 22700' (22700' ± 0.00)
- ⊙ 22800' (22800' ± 0.00)
- ⊙ 22900' (22900' ± 0.00)
- ⊙ 23000' (23000' ± 0.00)
- ⊙ 23100' (23100' ± 0.00)
- ⊙ 23200' (23200' ± 0.00)
- ⊙ 23300' (23300' ± 0.00)
- ⊙ 23400' (23400' ± 0.00)
- ⊙ 23500' (23500' ± 0.00)
- ⊙ 23600' (23600' ± 0.00)
- ⊙ 23700' (23700' ± 0.00)
- ⊙ 23800' (23800' ± 0.00)
- ⊙ 23900' (23900' ± 0.00)
- ⊙ 24000' (24000' ± 0.00)
- ⊙ 24100' (24100' ± 0.00)
- ⊙ 24200' (24200' ± 0.00)
- ⊙ 24300' (24300' ± 0.00)
- ⊙ 24400' (24400' ± 0.00)
- ⊙ 24500' (24500' ± 0.00)
- ⊙ 24600' (24600' ± 0.00)
- ⊙ 24700' (24700' ± 0.00)
- ⊙ 24800' (24800' ± 0.00)
- ⊙ 24900' (24900' ± 0.00)
- ⊙ 25000' (25000' ± 0.00)
- ⊙ 25100' (25100' ± 0.00)
- ⊙ 25200' (25200' ± 0.00)
- ⊙ 25300' (25300' ± 0.00)
- ⊙ 25400' (25400' ± 0.00)
- ⊙ 25500' (25500' ± 0.00)
- ⊙ 25600' (25600' ± 0.00)
- ⊙ 25700' (25700' ± 0.00)
- ⊙ 25800' (25800' ± 0.00)
- ⊙ 25900' (25900' ± 0.00)
- ⊙ 26000' (26000' ± 0.00)
- ⊙ 26100' (26100' ± 0.00)
- ⊙ 26200' (26200' ± 0.00)
- ⊙ 26300' (26300' ± 0.00)
- ⊙ 26400' (26400' ± 0.00)
- ⊙ 26500' (26500' ± 0.00)
- ⊙ 26600' (26600' ± 0.00)
- ⊙ 26700' (26700' ± 0.00)
- ⊙ 26800' (26800' ± 0.00)
- ⊙ 26900' (26900' ± 0.00)
- ⊙ 27000' (27000' ± 0.00)
- ⊙ 27100' (27100' ± 0.00)
- ⊙ 27200' (27200' ± 0.00)
- ⊙ 27300' (27300' ± 0.00)
- ⊙ 27400' (27400' ± 0.00)
- ⊙ 27500' (27500' ± 0.00)
- ⊙ 27600' (27600' ± 0.00)
- ⊙ 27700' (27700' ± 0.00)
- ⊙ 27800' (27800' ± 0.00)
- ⊙ 27900' (27900' ± 0.00)
- ⊙ 28000' (28000' ± 0.00)
- ⊙ 28100' (28100' ± 0.00)
- ⊙ 28200' (28200' ± 0.00)
- ⊙ 28300' (28300' ± 0.00)
- ⊙ 28400' (28400' ± 0.00)
- ⊙ 28500' (28500' ± 0.00)
- ⊙ 28600' (28600' ± 0.00)
- ⊙ 28700' (28700' ± 0.00)
- ⊙ 28800' (28800' ± 0.00)
- ⊙ 28900' (28900' ± 0.00)
- ⊙ 29000' (29000' ± 0.00)
- ⊙ 29100' (29100' ± 0.00)
- ⊙ 29200' (29200' ± 0.00)
- ⊙ 29300' (29300' ± 0.00)
- ⊙ 29400' (29400' ± 0.00)
- ⊙ 29500' (29500' ± 0.00)
- ⊙ 29600' (29600' ± 0.00)
- ⊙ 29700' (29700' ± 0.00)
- ⊙ 29800' (29800' ± 0.00)
- ⊙ 29900' (29900' ± 0.00)
- ⊙ 30000' (30000' ± 0.00)
- ⊙ 30100' (30100' ± 0.00)
- ⊙ 30200' (30200' ± 0.00)
- ⊙ 30300' (30300' ± 0.00)
- ⊙ 30400' (30400' ± 0.00)
- ⊙ 30500' (30500' ± 0.00)
- ⊙ 30600' (30600' ± 0.00)
- ⊙ 30700' (30700' ± 0.00)
- ⊙ 30800' (30800' ± 0.00)
- ⊙ 30900' (30900' ± 0.00)
- ⊙ 31000' (31000' ± 0.00)
- ⊙ 31100' (31100' ± 0.00)
- ⊙ 31200' (31200' ± 0.00)
- ⊙ 31300' (31300' ± 0.00)
- ⊙ 31400' (31400' ± 0.00)
- ⊙ 31500' (31500' ± 0.00)
- ⊙ 31600' (31600' ± 0.00)
- ⊙ 31700' (31700' ± 0.00)
- ⊙ 31800' (31800' ± 0.00)
- ⊙ 31900' (31900' ± 0.00)
- ⊙ 32000' (32000' ± 0.00)
- ⊙ 32100' (32100' ± 0.00)
- ⊙ 32200' (32200' ± 0.00)
- ⊙ 32300' (32300' ± 0.00)
- ⊙ 32400' (32400' ± 0.00)
- ⊙ 32500' (32500' ± 0.00)
- ⊙ 32600' (32600' ± 0.00)
- ⊙ 32700' (32700' ± 0.00)
- ⊙ 32800' (32800' ± 0.00)
- ⊙ 32900' (32900' ± 0.00)
- ⊙ 33000' (33000' ± 0.00)
- ⊙ 33100' (33100' ± 0.00)
- ⊙ 33200' (33200' ± 0.00)
- ⊙ 33300' (33300' ± 0.00)
- ⊙ 33400' (33400' ± 0.00)
- ⊙ 33500' (33500' ± 0.00)
- ⊙ 33600' (33600' ± 0.00)
- ⊙ 33700' (33700' ± 0.00)
- ⊙ 33800' (33800' ± 0.00)
- ⊙ 33900' (33900' ± 0.00)
- ⊙ 34000' (34000' ± 0.00)
- ⊙ 34100' (34100' ± 0.00)
- ⊙ 34200' (34200' ± 0.00)
- ⊙ 34300' (34300' ± 0.00)
- ⊙ 34400' (34400' ± 0.00)
- ⊙ 34500' (34500' ± 0.00)
- ⊙ 34600' (34600' ± 0.00)
- ⊙ 34700' (34700' ± 0.00)
- ⊙ 34800' (34800' ± 0.00)
- ⊙ 34900' (34900' ± 0.00)
- ⊙ 35000' (35000' ± 0.00)
- ⊙ 35100' (35100' ± 0.00)
- ⊙ 35200' (35200' ± 0.00)
- ⊙ 35300' (35300' ± 0.00)
- ⊙ 35400' (35400' ± 0.00)
- ⊙ 35500' (35500' ± 0.00)
- ⊙ 35600' (35600' ± 0.00)
- ⊙ 35700' (35700' ± 0.00)
- ⊙ 35800' (35800' ± 0.00)
- ⊙ 35900' (35900' ± 0.00)
- ⊙ 36000' (36000' ± 0.00)
- ⊙ 36100' (36100' ± 0.00)
- ⊙ 36200' (36200' ± 0.00)
- ⊙ 36300' (36300' ± 0.00)
- ⊙ 36400' (36400' ± 0.00)
- ⊙ 36500' (36500' ± 0.00)
- ⊙ 36600' (36600' ± 0.00)
- ⊙ 36700' (36700' ± 0.00)
- ⊙ 36800' (36800' ± 0.00)
- ⊙ 36900' (36900' ± 0.00)
- ⊙ 37000' (37000' ± 0.00)
- ⊙ 37100' (37100' ± 0.00)
- ⊙ 37200' (37200' ± 0.