

CORNER AND OCCUPATION INFORMATION

- INDICATES EXISTING REBAR AND CAP AT CORNER INSCRIBED SKODLE
- INDICATES EXISTING REBAR WITH ILLEGIBLE CAP 0.1 FEET SOUTH OF CORNER 4.5 FEET
- SOUTHWEST CORNER 6-FOOT HOOD FENCE 3.5 FEET WEST OF PROPERTY LINE
- W/ CORNER 6-FOOT FENCE 4.2 FEET WEST OF PROPERTY LINE

MOUNT IN CASE
2" BRASS DISK
W/ FINCH IN CONC
(JULY 2020)

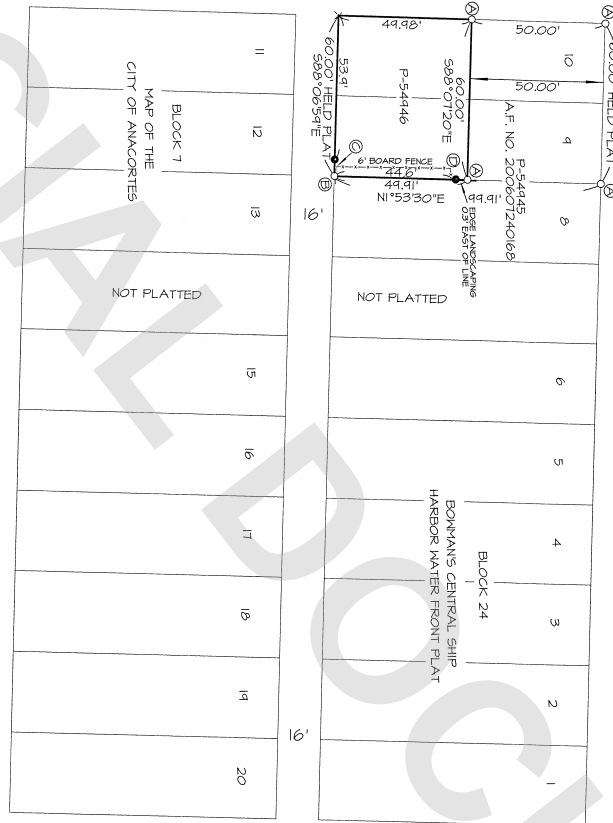
589°07'20"E
MEAS=379.90' AND 379.93'
(PREVIOUS SURVEYS=379.90' AND 379.93')

6TH ST

MOUNT IN CASE
2" BRASS DISK
W/ FINCH IN CONC
(JULY 2020)

51°51'34"W
MEAS=295.27'
(PREVIOUS SURVEYS=295.28', 295.92' AND 295.44')

"L" AVE



51°53'30"W MEAS=591.60'
ROS A.F. NO. 8510290008=591.62
CALC=295.79'
(PREVIOUS SURVEYS=295.80', 295.88' AND 295.82')

"Q" AVE

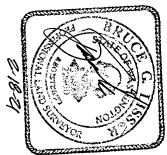
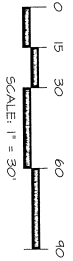
7TH ST

189°06'38"W
CALC=380.03' (PREVIOUS SURVEYS=380.06' AND 380.06')

UNABLE TO OPEN MOUNT LID
LAST SURVEYED BY
A.F. NO. 8510290008

MOUNT IN CASE
2" BRASS DISK
W/ FINCH IN CONC
(JULY 2020)

8TH ST



SHEET 2 OF 2

DATE: 2/19/21

SURVEY IN A PORTION	
OF THE BN 1/4 OF 602 E. 1/4M.	
SECTION 12, T. 35 N., R. 10 W.,	
SHEET 2 OF 2, WASHINGTON	
FOR: 601 & 1, LLC	
FB:	LISSE & ASSOCIATES, PLLC
PG:	SCALE: 1" = 30'
MERIDIAN: ASSIGNED	DATE: 2/19/21
W/ FINCH IN CONC	DATE: 2/19/21