

DESCRIPTION OF STATE TRUST LAND SURVEYED
THE SOUTH HALF OF SECTION 10, TOWNSHIP 36 NORTH, RANGE 8 EAST, 14W, PER WASHINGTON CLEAR LIST NO. 2 DATED 2-16-1893, LATER RECORDED IN VOLUME 251, PAGE 94 OF THE ORIGINAL RECORDS OF THE SUPERIOR COUNTY AUDITOR.

BASIS OF BEARINGS
WASHINGTON COORDINATE SYSTEM, NAD83(2011) EPOCH 2010, NORTH ZONE, DERIVED FROM AVERAGED STATIC GPS SESSIONS WITH ORUS POST PROCESSING CONVERGENCE.

METHOD OF HORIZONTAL CONTROL
PROJECT DISTANCE FACTOR:
THE MEAS AND DISTANCES SHOWN ARE GRID. DIVIDE THE GRID DISTANCE BY 0.99993415 TO COMPUTE GROUND DISTANCE.
LATITUDE FACTOR = 0.99999074
ELEVATION FACTOR = 0.99999541
COMBINED GRID FACTOR = 0.999992415

METHOD OF HORIZONTAL CONTROL

WE ESTABLISHED PRIMARY CONTROL FOR THIS SURVEY WITH RTK SURVEYING. THE SURVEY WAS CONDUCTED USING A TRIPPLIANT SURVEYING SYSTEM WITH MULTIPLE STATIC GPS SESSIONS PROCESSED WITH ORUS POST PROCESSING. CORNER TIES WERE MADE BY FIELD TRAVERSE USING A LEICA TS12 EMBED ON GPS BASISLINE. CLOSURES MEET RELATIVE ACCURACY STANDARDS AS SPECIFIED IN WAC 352.190.055.

MARRATIVE

THE PURPOSE OF THIS SURVEY IS TO POST A PORTION OF THE SOUTH HALF OF SECTION 10, TOWNSHIP 36 NORTH, RANGE 8 EAST, 14W, TO THE PUBLIC RECORDS OF THE SUPERIOR COUNTY AUDITOR. THIS SURVEY DOES NOT PURPORT TO SHOW ALL EASEMENTS OF RECORD OR OTHER BURDENS.

LIST OF PERTINENT SURVEY DOCUMENTS USED FOR REFERENCE

- GENERAL LAND OFFICE SURVEY OF TOWNSHIP 36 NORTH, RANGE 8 EAST BY NUMBER 389 DATED MAY 25, 1891
- BAKER LANE ROAD REVISION - SOUTH FROM 720' PACKET NO. 1, SURVEY ENGINEERS OFFICE (OLD TITLE NO. D391) BEAR CREEK, SNAKE RIVER ROAD SECTION T157, 1.1 WRIGHT AND PARTY, DATED MAY-JUNE 1827
- BAKER LANE ROAD REVISION - SOUTH FROM 720' PACKET NO. 2, SURVEY ENGINEERS OFFICE (OLD TITLE NO. H-137) REVISION AT BEAR CREEK, CORNER OF RIVER, FETTERS, WAGNERSON, STONEY, DATED JUNE 1929
- SECTION CORNER SHEET FROM SECTION 10 HELD AT THE DAN WAGNERSON OFFICE IN SERRA, MOUNTAIN AND OLYMPIA, DATED 8-8-1989
- PHOTO AIR COLLECTION FROM DAN INVESTIGATORY DIVISION, AVAILABLE KEY DATES: 1978, 1980, 1982, 1984, 1986, 1988, 1990, 1992, 1994, 1996, 1998, 2000, 2002, 2004, 2006, 2008, 2010, 2012, 2014, 2016, 2018, 2020
- DNR DATA FROM DNR LOCK NOTE FROM SECTION 10 WORK DONE AND APPROVED BY DALE THOMPSON, JACK STEWART AND WILLIAM GROSS, DNR HWY PLAT FOR BEAR CREEK ROAD IN SECTION 10, WORK DONE AND APPROVED BY DALE THOMPSON, JACK STEWART AND WILLIAM GROSS, DATED 8-30-1990
- LAND CORNER RECORD FOR CORNER G17, BY FREDERIC P. PETERSEN, P.L.S. 2020, RECORDED UNDER MAN 820090046 AND DATED 9-9-2020
- FELDBROCK FROM THE SCOTT PAPER CO. COLLECTION, HELD AT THE SERRA PACIFIC MILL IN MANACORTES (FB 14-16, PG 445), DATED 2-26-1945

AUDITOR'S CERTIFICATE

FILED FOR RECORD THIS 23 DAY OF JULY, 2020
AT 10:28 AM UNDER AUDITOR'S FILE # 202007230042
AT THE REQUEST OF THE WASHINGTON STATE DEPARTMENT OF NATURAL RESOURCES

SKAGIT COUNTY AUDITOR

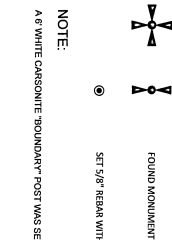
DEPUTY AUDITOR

SURVEYOR'S CERTIFICATE

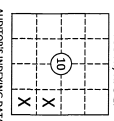
THIS MAP CORRECTLY REPRESENTS A SURVEY MADE BY ME OR UNDER MY CLOSE PERSONAL SUPERVISION AND IN ACCORDANCE WITH THE REQUIREMENTS OF THE SURVEY ACT AND THE REGULATIONS OF THE DEPARTMENT OF NATURAL RESOURCES IN JUNE, 2020.

BRIAN J. WILLIAMS, P.L.S.

7-16-2020
4713



NOTE: A 6\"/>



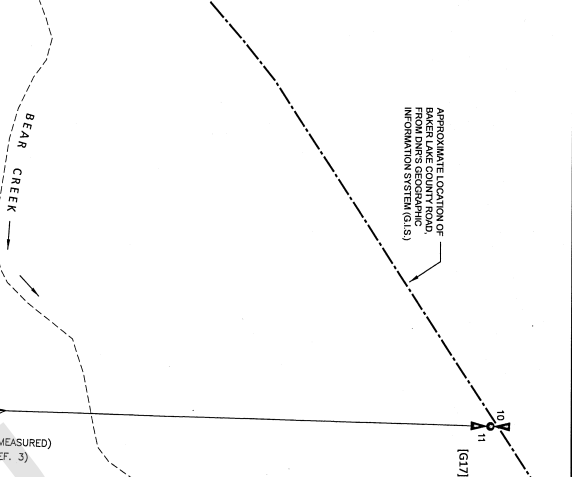
AUDITOR'S INDEXING DATA

"WEST SHANNON S.10 TRIPLESS" SURVEY

FIELD CREW: B. WILLIAMS, P.L.S.
M. JENSEN, S.L.T.
FIELD BOOK: 7137 6/18/2020
FINAL MAP NUMBER: 2134
SHEET 1 OF 1

APPROXIMATE LOCATION OF ORIGINAL COUNTY ROAD FROM DNR'S GEOGRAPHIC INFORMATION SYSTEM (GIS).

APPROXIMATE LOCATION OF BEAR CREEK FROM DNR'S GEOGRAPHIC INFORMATION SYSTEM (GIS).



CORNER NOTES

CORNER CODES REFER TO TOWNSHIP 36 NORTH, RANGE 8 EAST REFERENCE BEARINGS ARE TO CENTER OF TREE OR STUMP. DISTANCES ARE TO NAILS IN SIDE OF TREE OR STUMP.

(G17) QUARTER CORNER COMMON TO SECTIONS 10 & 11

P.K. NAIL IN EDGE OF TRAVELED ROADWAY HISTORY:
1885 - GLO CREW SETS A HEALOCK POST FOR 1/4 CORNER FROM WHICH:
- A 3\"/>

(117) SECTION CORNER COMMON TO SECTIONS 10, 11, 14, & 15

ACCEPTED ONE CONCRETE MONUMENT HISTORY:
1897 - T150 CHAINS THE GLO CREW ENTERS A WASH. AND AT 80 CHAINS, THEY SET A HEALOCK POST FROM WHICH:
- A 10\"/>