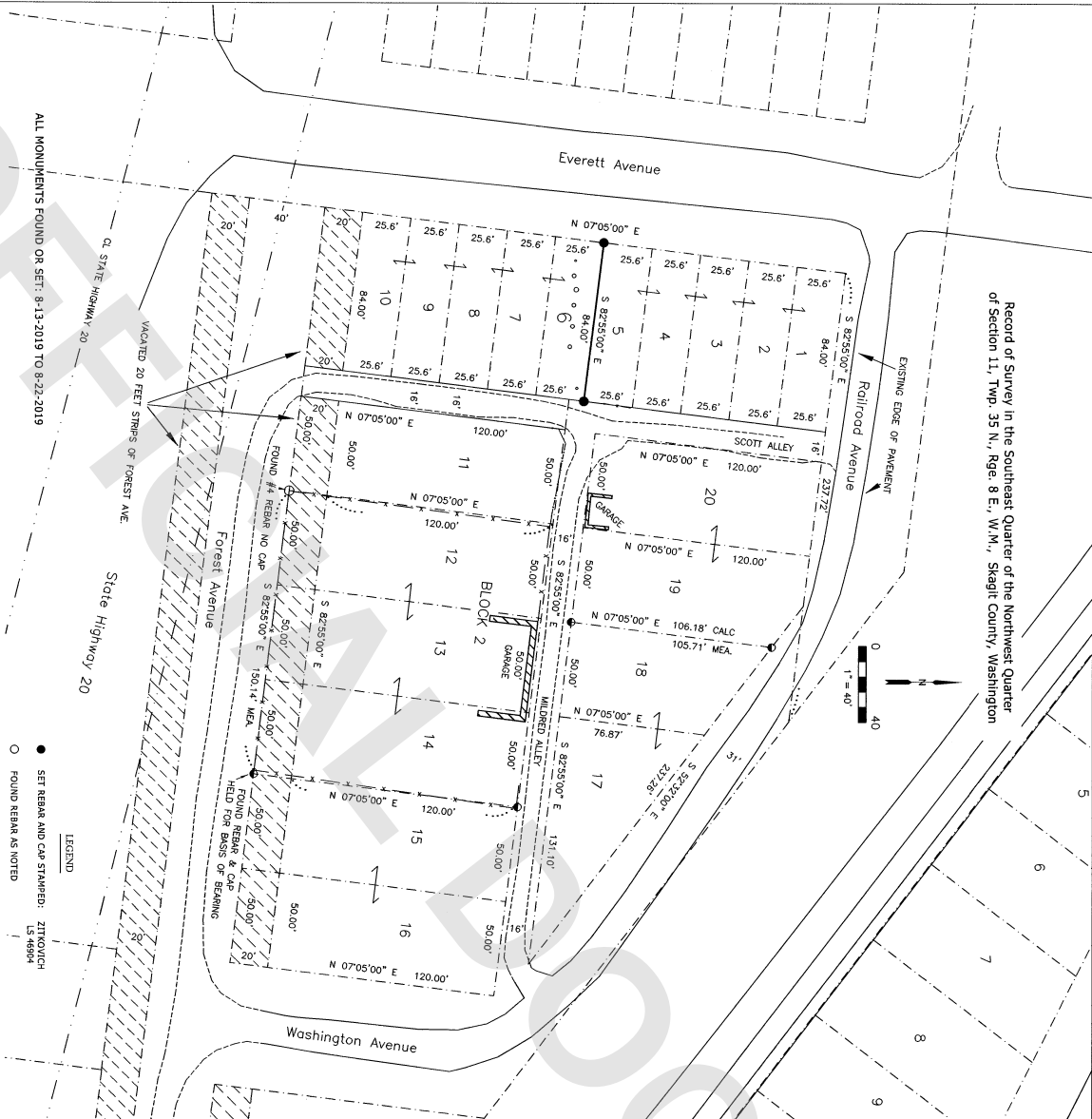


Record of Survey in the Southeast Quarter of the Northwest Quarter of Section 11, Twp. 35 N., Rge. 8 E., W.M., Skagit County, Washington



SURVEYOR'S CERTIFICATE

THIS MAP CORRECTLY REPRESENTS A SURVEY MADE BY ME OR UNDER MY DIRECTION IN CONFORMANCE WITH THE REQUIREMENTS OF THE SURVEY RECORDING ACT AT THE REQUEST OF DINAH KINNEY IN JUNE, 2019

Stephen Anthony Zirkovich 9-13-2019

STEPHEN ANTHONY ZIRKOVICH DATE

CERTIFICATE NUMBER 46904



9-13-2019

RECORD OF SURVEY

Of the North Line of Lot 6, Block 2, Plat of Cement City in the Southeast Quarter of the Northwest Quarter of Section 11, Twp. 35 N., Rge. 8 E., W.M., Skagit County, Washington

for Dinah Kinney

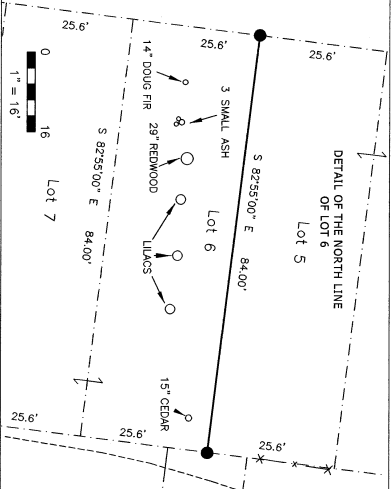
- LEGEND
- SET REAR AND CAP STAMPED: ZIRKOVICH 154994
 - FOUND REAR AS NOTED
 - FOUND REAR AND CAP STAMPED: SKA SURV 10651
 - FENCE
 - - - - - EDGE OF PAVEMENT
 - - - - - EDGE OF GRAVEL

AUDITOR'S CERTIFICATE
Filed for record this 12 day of September, 2019
at 3:46 AM/PM volume of surveys on page
under Auditor's File No. 201909130150
at the request of Zirkovich Land Surveying, PLLC

Skagit County Auditor
Deputy

NOTES

1. BASIS OF BEARING: N 82°55'00" W FROM THE FOUND MONUMENT AT THE SOUTHEAST CORNER OF LOT 10 TO THE FOUND MONUMENT AT THE SOUTHWEST CORNER OF LOT 11, AS PER THE PLAT OF CEMENT CITY.
2. THIS SURVEY WAS PERFORMED BY A STANDARD FIELD TRAVERSE USING A LEICA TOPCON 1203 (3 SECOND) TOTAL STATION. THIS SURVEY MEETS OR EXCEEDS THE ACCURACY REQUIREMENTS SPECIFIED IN W.A.C. CH. 32A-130-090.
3. THIS IS BOUNDARY SURVEY ONLY, NEITHER UTILITIES NOR TOPOGRAPHY WERE SURVEYED.
4. THIS SURVEY WAS PERFORMED WITHOUT THE BENEFIT OF A TITLE REPORT, IT DOES NOT PURPORT TO SHOW ALL EASEMENTS, RESTRICTIONS, RESERVATIONS, PROVISIONS, COVENANTS, CONDITIONS OR SETBACKS WHICH MAY AFFECT THE PARCELS SHOWN.
5. UNLESS OTHERWISE NOTED ALL MONUMENTS WERE FOUND WITHIN 0.16 OF RECORDED PLAT CORNERS WERE SET ON AUGUST 20, 2019.
6. BLOCK AND LOT DIMENSION HAVE BEEN TAKEN FROM THE PLAT OF CEMENT CITY, SKAGIT COUNTY, WASHINGTON, FILED UNDER AUDITOR'S FILE NO. 2895.
7. THE TWO ORIGINAL PLAT MONUMENTS ON FOREST AVENUE WERE STONES IN THE MIDDLE OF THE PLAT HIGHWAY.
8. THIS MAP HAS SHOWN THE ROADS AND LONGSTANDING FENCES WITHIN BLOCK 2. THE MONUMENTS AT THE SOUTHEAST CORNER AND NORTHEAST CORNER OF LOT 14, AND THE MONUMENT AT THE SOUTHEAST CORNER OF LOT 11, WERE HELD AS THE CONTROL OF THE PLAT WITHIN BLOCK TWO, CONFIRMING MONUMENTS WERE FOUND AT THE ENDS OF THE LINE BETWEEN LOTS 18 & 19.
9. SAID CONTROL ALLOWS ALL PROPERTIES THEIR FULL DIMENSIONS. THIS RETRACEMENT MONUMENTS FOR ACCURACY AND IMPROVEMENTS WITHIN THE PLAT QUOTE WELL.
10. THE MONUMENTS AT THE SOUTHEAST CORNER AND NORTHEAST CORNER OF LOT 14, AND THE MONUMENT AT THE SOUTHEAST CORNER OF LOT 11, WERE HELD AS THE CONTROL OF THE PLAT WITHIN BLOCK TWO, CONFIRMING MONUMENTS WERE FOUND AT THE ENDS OF THE LINE BETWEEN LOTS 18 & 19.
11. THE MONUMENTS AT THE SOUTHEAST CORNER AND NORTHEAST CORNER OF LOT 14, AND THE MONUMENT AT THE SOUTHEAST CORNER OF LOT 11, WERE HELD AS THE CONTROL OF THE PLAT WITHIN BLOCK TWO, CONFIRMING MONUMENTS WERE FOUND AT THE ENDS OF THE LINE BETWEEN LOTS 18 & 19.
12. THE MONUMENTS AT THE SOUTHEAST CORNER AND NORTHEAST CORNER OF LOT 14, AND THE MONUMENT AT THE SOUTHEAST CORNER OF LOT 11, WERE HELD AS THE CONTROL OF THE PLAT WITHIN BLOCK TWO, CONFIRMING MONUMENTS WERE FOUND AT THE ENDS OF THE LINE BETWEEN LOTS 18 & 19.
13. THE MONUMENTS AT THE SOUTHEAST CORNER AND NORTHEAST CORNER OF LOT 14, AND THE MONUMENT AT THE SOUTHEAST CORNER OF LOT 11, WERE HELD AS THE CONTROL OF THE PLAT WITHIN BLOCK TWO, CONFIRMING MONUMENTS WERE FOUND AT THE ENDS OF THE LINE BETWEEN LOTS 18 & 19.
14. THE MONUMENTS AT THE SOUTHEAST CORNER AND NORTHEAST CORNER OF LOT 14, AND THE MONUMENT AT THE SOUTHEAST CORNER OF LOT 11, WERE HELD AS THE CONTROL OF THE PLAT WITHIN BLOCK TWO, CONFIRMING MONUMENTS WERE FOUND AT THE ENDS OF THE LINE BETWEEN LOTS 18 & 19.
15. THE MONUMENTS AT THE SOUTHEAST CORNER AND NORTHEAST CORNER OF LOT 14, AND THE MONUMENT AT THE SOUTHEAST CORNER OF LOT 11, WERE HELD AS THE CONTROL OF THE PLAT WITHIN BLOCK TWO, CONFIRMING MONUMENTS WERE FOUND AT THE ENDS OF THE LINE BETWEEN LOTS 18 & 19.
16. THE MONUMENTS AT THE SOUTHEAST CORNER AND NORTHEAST CORNER OF LOT 14, AND THE MONUMENT AT THE SOUTHEAST CORNER OF LOT 11, WERE HELD AS THE CONTROL OF THE PLAT WITHIN BLOCK TWO, CONFIRMING MONUMENTS WERE FOUND AT THE ENDS OF THE LINE BETWEEN LOTS 18 & 19.
17. THE MONUMENTS AT THE SOUTHEAST CORNER AND NORTHEAST CORNER OF LOT 14, AND THE MONUMENT AT THE SOUTHEAST CORNER OF LOT 11, WERE HELD AS THE CONTROL OF THE PLAT WITHIN BLOCK TWO, CONFIRMING MONUMENTS WERE FOUND AT THE ENDS OF THE LINE BETWEEN LOTS 18 & 19.
18. THE MONUMENTS AT THE SOUTHEAST CORNER AND NORTHEAST CORNER OF LOT 14, AND THE MONUMENT AT THE SOUTHEAST CORNER OF LOT 11, WERE HELD AS THE CONTROL OF THE PLAT WITHIN BLOCK TWO, CONFIRMING MONUMENTS WERE FOUND AT THE ENDS OF THE LINE BETWEEN LOTS 18 & 19.
19. THE MONUMENTS AT THE SOUTHEAST CORNER AND NORTHEAST CORNER OF LOT 14, AND THE MONUMENT AT THE SOUTHEAST CORNER OF LOT 11, WERE HELD AS THE CONTROL OF THE PLAT WITHIN BLOCK TWO, CONFIRMING MONUMENTS WERE FOUND AT THE ENDS OF THE LINE BETWEEN LOTS 18 & 19.
20. THE MONUMENTS AT THE SOUTHEAST CORNER AND NORTHEAST CORNER OF LOT 14, AND THE MONUMENT AT THE SOUTHEAST CORNER OF LOT 11, WERE HELD AS THE CONTROL OF THE PLAT WITHIN BLOCK TWO, CONFIRMING MONUMENTS WERE FOUND AT THE ENDS OF THE LINE BETWEEN LOTS 18 & 19.



ZIRKOVICH LAND SURVEYING, PLLC

CONCRETE WA 99237

(360) 391-4494

CHECKED BY: SAZ SEPTEMBER 11, 2019 SCALE OF MAIN: 1"=40'
DATES OF FIELD WORK: 8-13-2019 TO 8-24-2019 SCALE OF DETAIL: 1"=16'