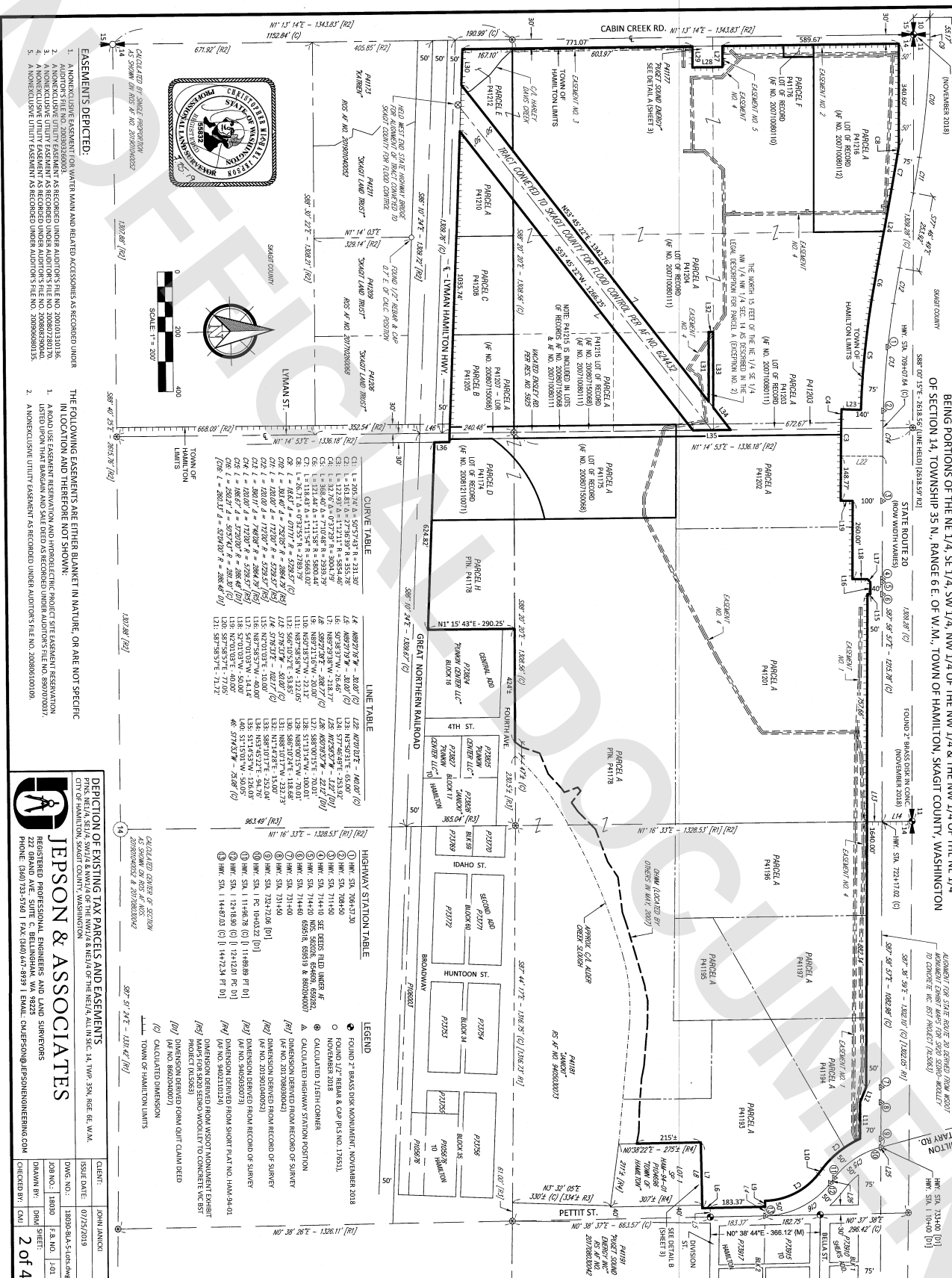


BEING PORTIONS OF THE NE 1/4, SE 1/4, SW 1/4, NW 1/4 OF THE NW 1/4 OF THE NE 1/4 OF SECTION 14, TOWNSHIP 35 N., RANGE 6 E. OF W.M. TOWN OF HAMILTON, SKAGIT COUNTY, WASHINGTON



863.49 [6]		863.49 [6]	
N17.16, 33.2, 1220.55, 101.1 [1] [62]		N17.16, 33.2, 1220.55, 101.1 [1] [62]	
(1)	HW, S1, 70641-30	(12)	HW, S1, 70641-30
(2)	HW, S1, 70641-30	(13)	HW, S1, 70641-30
(3)	HW, S1, 70641-30	(14)	HW, S1, 70641-30
(4)	HW, S1, 70641-30	(15)	HW, S1, 70641-30
(5)	HW, S1, 70641-30	(16)	HW, S1, 70641-30
(6)	HW, S1, 70641-30	(17)	HW, S1, 70641-30
(7)	HW, S1, 70641-30	(18)	HW, S1, 70641-30
(8)	HW, S1, 70641-30	(19)	HW, S1, 70641-30
(9)	HW, S1, 70641-30	(20)	HW, S1, 70641-30
(10)	HW, S1, 70641-30	(21)	HW, S1, 70641-30
(11)	HW, S1, 70641-30	(22)	HW, S1, 70641-30
(12)	HW, S1, 70641-30	(23)	HW, S1, 70641-30
(13)	HW, S1, 70641-30	(24)	HW, S1, 70641-30
(14)	HW, S1, 70641-30	(25)	HW, S1, 70641-30
(15)	HW, S1, 70641-30	(26)	HW, S1, 70641-30
(16)	HW, S1, 70641-30	(27)	HW, S1, 70641-30
(17)	HW, S1, 70641-30	(28)	HW, S1, 70641-30
(18)	HW, S1, 70641-30	(29)	HW, S1, 70641-30
(19)	HW, S1, 70641-30	(30)	HW, S1, 70641-30
(20)	HW, S1, 70641-30	(31)	HW, S1, 70641-30
(21)	HW, S1, 70641-30	(32)	HW, S1, 70641-30
(22)	HW, S1, 70641-30	(33)	HW, S1, 70641-30
(23)	HW, S1, 70641-30	(34)	HW, S1, 70641-30
(24)	HW, S1, 70641-30	(35)	HW, S1, 70641-30
(25)	HW, S1, 70641-30	(36)	HW, S1, 70641-30
(26)	HW, S1, 70641-30	(37)	HW, S1, 70641-30
(27)	HW, S1, 70641-30	(38)	HW, S1, 70641-30
(28)	HW, S1, 70641-30	(39)	HW, S1, 70641-30
(29)	HW, S1, 70641-30	(40)	HW, S1, 70641-30
(30)	HW, S1, 70641-30	(41)	HW, S1, 70641-30
(31)	HW, S1, 70641-30	(42)	HW, S1, 70641-30
(32)	HW, S1, 70641-30	(43)	HW, S1, 70641-30
(33)	HW, S1, 70641-30	(44)	HW, S1, 70641-30
(34)	HW, S1, 70641-30	(45)	HW, S1, 70641-30
(35)	HW, S1, 70641-30	(46)	HW, S1, 70641-30
(36)	HW, S1, 70641-30	(47)	HW, S1, 70641-30
(37)	HW, S1, 70641-30	(48)	HW, S1, 70641-30
(38)	HW, S1, 70641-30	(49)	HW, S1, 70641-30
(39)	HW, S1, 70641-30	(50)	HW, S1, 70641-30
(40)	HW, S1, 70641-30	(51)	HW, S1, 70641-30
(41)	HW, S1, 70641-30	(52)	HW, S1, 70641-30
(42)	HW, S1, 70641-30	(53)	HW, S1, 70641-30
(43)	HW, S1, 70641-30	(54)	HW, S1, 70641-30
(44)	HW, S1, 70641-30	(55)	HW, S1, 70641-30
(45)	HW, S1, 70641-30	(56)	HW, S1, 70641-30
(46)	HW, S1, 70641-30	(57)	HW, S1, 70641-30
(47)	HW, S1, 70641-30	(58)	HW, S1, 70641-30
(48)	HW, S1, 70641-30	(59)	HW, S1, 70641-30
(49)	HW, S1, 70641-30	(60)	HW, S1, 70641-30
(50)	HW, S1, 70641-30	(61)	HW, S1, 70641-30
(51)	HW, S1, 70641-30	(62)	HW, S1, 70641-30
(52)	HW, S1, 70641-30	(63)	HW, S1, 70641-30
(53)	HW, S1, 70641-30	(64)	HW, S1, 70641-30
(54)	HW, S1, 70641-30	(65)	HW, S1, 70641-30
(55)	HW, S1, 70641-30	(66)	HW, S1, 70641-30
(56)	HW, S1, 70641-30	(67)	HW, S1, 70641-30
(57)	HW, S1, 70641-30	(68)	HW, S1, 70641-30
(58)	HW, S1, 70641-30	(69)	HW, S1, 70641-30
(59)	HW, S1, 70641-30	(70)	HW, S1, 70641-30
(60)	HW, S1, 70641-30	(71)	HW, S1, 70641-30
(61)	HW, S1, 70641-30	(72)	HW, S1, 70641-30
(62)	HW, S1, 70641-30	(73)	HW, S1, 70641-30
(63)	HW, S1, 70641-30	(74)	HW, S1, 70

FOUND 7th BRASS DISK MOVEMENT, NOVEMBER 2018
 FOUND 1/2" REBAR & CAP (P.S. NO. 17651).
 NOVEMBER 2018
 CALCULATED 1/8" HIGH CORNER
 △ CALCULATED LIGHT STATION POSITION
 DIMENSION DERIVED FROM RECORD OF SURVEY
 (A.F. NO. 20170803004)
 DIMENSION DERIVED FROM RECORD OF SURVEY
 (A.F. NO. 20190805005)
 DIMENSION DERIVED FROM RECORD OF SURVEY
 (A.F. NO. 200805007)
 DIMENSION DERIVED FROM SHORT PLAT NO. 1944-94-01
 DIMENSION DERIVED FROM SHORT PLAT NO. 1944-94-01
 DIMENSION DERIVED FROM SHORT PLAT NO. 1944-94-01

[illegible]

LOT 1

ROUT

THENCE SOUTH 01-13-14 WEST
CORPORATION BY DEED DATED

THE FLOOD CONTROL BY DEED DATA

QUARTER OF SECTION 14;
TOWNSHIP 98°10'17" EAST

THENCE SOUTH 86°10'24" EAST

THENCE NORTH 15°43'24" EAST
THENCE NORTH 02°46'51" EAST

L012

THENCE SOUTH 02°46'51" WE
THENCE SOUTH 15°43'24" WE

CONTAINING 11.24 ACRES, MORE OR LESS, WITHIN THE TOWN OF

COMMENCING AT THE NORTH
LINE OF SAID SOUTHEAST OIL

THENCE SOUTH 77°50'55" EAST
THENCE NORTH 64°08'35" EAST

LO14

THENCE SOUTH 38°36'44" W

THENCE NORTH 01°15'43" E
THENCE SOUTH 88°20'20" E

THENCE SOUTH 87°58'57" EA

BEING PORTIONS OF THE NE 1/4, SE 1/4, SW 1/4, NW 1/4 OF THE NW 1/4 OF THE NE 1/4 OF SECTION 14, TOWNSHIP 35 N., RANGE 6 E. OF W.M., TOWN OF HAMILTON, SKAGIT COUNTY, WASHINGTON

LOT 5

NORTHEAST QUARTER OF SECTION 14, TOWNSHIP 35 NORTH, RANGE 6
W.M., LYING SOUTH OF STATE ROUTE 20, NORTH OF ALDER CREEK SLOU
OF PETTIT STREET AND WEST OF HAMILTON CEMETERY ROAD;

PLATE 1

SITUA

5

10

•

21

ББК

 $2' / 1$

M. E.

NO

Smith

1. THE BEARINGS AND COOLING

- RECORDS OF SKAGIT COUNTY, WASHINGTON

PUNKIN CENTER BOUNDARY LINE ADJUSTMENT

FOUND

- EASEMENT
NO. 2
- 889' 21' 19" E. OF
S89° 21' 19"E - 30.00'

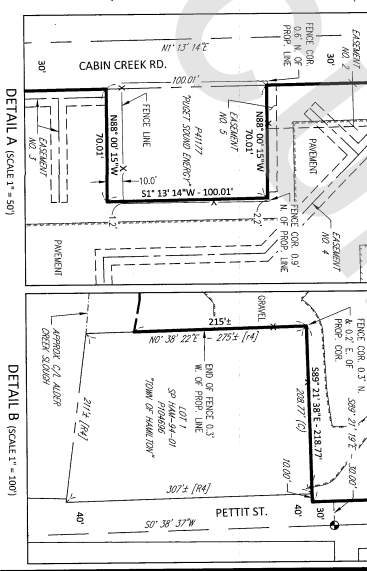
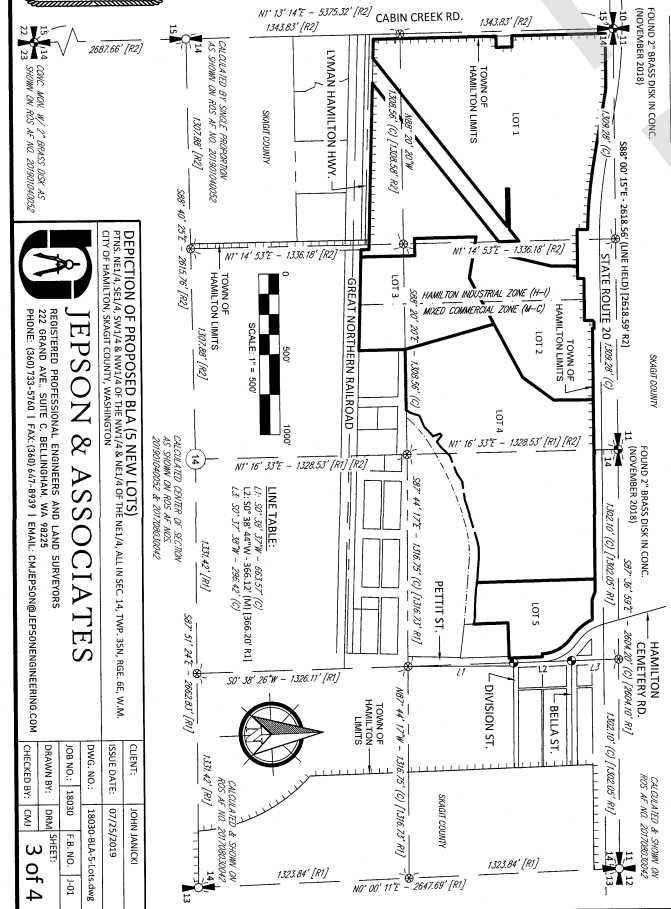
[illegible]

- 589° 21' 19" E - 30.00'



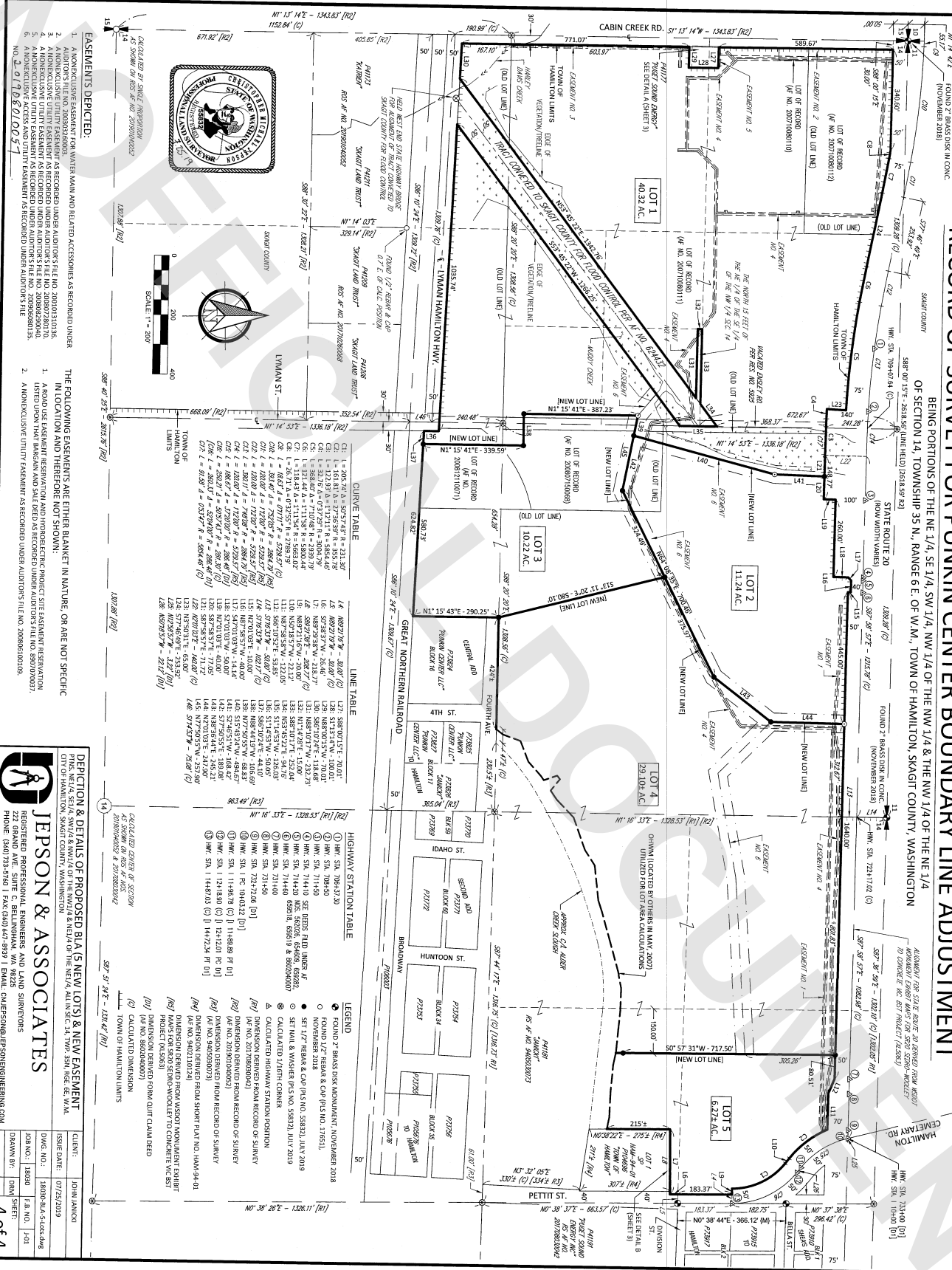
2005 OF PROPOSED BLA (5 NEW LOTS)
 1. NW 1/4 SEC 14, T4P, 35N, R6E, W1M,
 2. NW 1/4 SEC 15, T4P, 35N, R6E, W1M,
 3. NW 1/4 SEC 16, T4P, 35N, R6E, W1M,
 4. NW 1/4 SEC 17, T4P, 35N, R6E, W1M,
 5. NW 1/4 SEC 18, T4P, 35N, R6E, W1M,
 6. NW 1/4 SEC 19, T4P, 35N, R6E, W1M,
 7. NW 1/4 SEC 20, T4P, 35N, R6E, W1M,
 8. NW 1/4 SEC 21, T4P, 35N, R6E, W1M,
 9. NW 1/4 SEC 22, T4P, 35N, R6E, W1M,
 10. NW 1/4 SEC 23, T4P, 35N, R6E, W1M,
 11. NW 1/4 SEC 24, T4P, 35N, R6E, W1M,
 12. NW 1/4 SEC 25, T4P, 35N, R6E, W1M,
 13. NW 1/4 SEC 26, T4P, 35N, R6E, W1M,
 14. NW 1/4 SEC 27, T4P, 35N, R6E, W1M,
 15. NW 1/4 SEC 28, T4P, 35N, R6E, W1M,
 16. NW 1/4 SEC 29, T4P, 35N, R6E, W1M,
 17. NW 1/4 SEC 30, T4P, 35N, R6E, W1M,
 18. NW 1/4 SEC 31, T4P, 35N, R6E, W1M,
 19. NW 1/4 SEC 32, T4P, 35N, R6E, W1M,
 20. NW 1/4 SEC 33, T4P, 35N, R6E, W1M,
 21. NW 1/4 SEC 34, T4P, 35N, R6E, W1M,
 22. NW 1/4 SEC 35, T4P, 35N, R6E, W1M,
 23. NW 1/4 SEC 36, T4P, 35N, R6E, W1M,
 24. NW 1/4 SEC 37, T4P, 35N, R6E, W1M,
 25. NW 1/4 SEC 38, T4P, 35N, R6E, W1M,
 26. NW 1/4 SEC 39, T4P, 35N, R6E, W1M,
 27. NW 1/4 SEC 40, T4P, 35N, R6E, W1M,
 28. NW 1/4 SEC 41, T4P, 35N, R6E, W1M,
 29. NW 1/4 SEC 42, T4P, 35N, R6E, W1M,
 30. NW 1/4 SEC 43, T4P, 35N, R6E, W1M,
 31. NW 1/4 SEC 44, T4P, 35N, R6E, W1M,
 32. NW 1/4 SEC 45, T4P, 35N, R6E, W1M,
 33. NW 1/4 SEC 46, T4P, 35N, R6E, W1M,
 34. NW 1/4 SEC 47, T4P, 35N, R6E, W1M,
 35. NW 1/4 SEC 48, T4P, 35N, R6E, W1M,
 36. NW 1/4 SEC 49, T4P, 35N, R6E, W1M,
 37. NW 1/4 SEC 50, T4P, 35N, R6E, W1M,
 38. NW 1/4 SEC 51, T4P, 35N, R6E, W1M,
 39. NW 1/4 SEC 52, T4P, 35N, R6E, W1M,
 40. NW 1/4 SEC 53, T4P, 35N, R6E, W1M,
 41. NW 1/4 SEC 54, T4P, 35N, R6E, W1M,
 42. NW 1/4 SEC 55, T4P, 35N, R6E, W1M,
 43. NW 1/4 SEC 56, T4P, 35N, R6E, W1M,
 44. NW 1/4 SEC 57, T4P, 35N, R6E, W1M,
 45. NW 1/4 SEC 58, T4P, 35N, R6E, W1M,
 46. NW 1/4 SEC 59, T4P, 35N, R6E, W1M,
 47. NW 1/4 SEC 60, T4P, 35N, R6E, W1M,
 48. NW 1/4 SEC 61, T4P, 35N, R6E, W1M,
 49. NW 1/4 SEC 62, T4P, 35N, R6E, W1M,
 50. NW 1/4 SEC 63, T4P, 35N, R6E, W1M,
 51. NW 1/4 SEC 64, T4P, 35N, R6E, W1M,
 52. NW 1/4 SEC 65, T4P, 35N, R6E, W1M,
 53. NW 1/4 SEC 66, T4P, 35N, R6E, W1M,
 54. NW 1/4 SEC 67, T4P, 35N, R6E, W1M,
 55. NW 1/4 SEC 68, T4P, 35N, R6E, W1M,
 56. NW 1/4 SEC 69, T4P, 35N, R6E, W1M,
 57. NW 1/4 SEC 70, T4P, 35N, R6E, W1M,
 58. NW 1/4 SEC 71, T4P, 35N, R6E, W1M,
 59. NW 1/4 SEC 72, T4P, 35N, R6E, W1M,
 60. NW 1/4 SEC 73, T4P, 35N, R6E, W1M,
 61. NW 1/4 SEC 74, T4P, 35N, R6E, W1M,
 62. NW 1/4 SEC 75, T4P, 35N, R6E, W1M,
 63. NW 1/4 SEC 76, T4P, 35N, R6E, W1M,
 64. NW 1/4 SEC 77, T4P, 35N, R6E, W1M,
 65. NW 1/4 SEC 78, T4P, 35N, R6E, W1M,
 66. NW 1/4 SEC 79, T4P, 35N, R6E, W1M,
 67. NW 1/4 SEC 80, T4P, 35N, R6E, W1M,
 68. NW 1/4 SEC 81, T4P, 35N, R6E, W1M,
 69. NW 1/4 SEC 82, T4P, 35N, R6E, W1M,
 70. NW 1/4 SEC 83, T4P, 35N, R6E, W1M,
 71. NW 1/4 SEC 84, T4P, 35N, R6E, W1M,
 72. NW 1/4 SEC 85, T4P, 35N, R6E, W1M,
 73. NW 1/4 SEC 86, T4P, 35N, R6E, W1M,
 74. NW 1/4 SEC 87, T4P, 35N, R6E, W1M,
 75. NW 1/4 SEC 88, T4P, 35N, R6E, W1M,
 76. NW 1/4 SEC 89, T4P, 35N, R6E, W1M,
 77. NW 1/4 SEC 90, T4P, 35N, R6E, W1M,
 78. NW 1/4 SEC 91, T4P, 35N, R6E, W1M,
 79. NW 1/4 SEC 92, T4P, 35N, R6E, W1M,
 80. NW 1/4 SEC 93, T4P, 35N, R6E, W1M,
 81. NW 1/4 SEC 94, T4P, 35N, R6E, W1M,
 82. NW 1/4 SEC 95, T4P, 35N, R6E, W1M,
 83. NW 1/4 SEC 96, T4P, 35N, R6E, W1M,
 84. NW 1/4 SEC 97, T4P, 35N, R6E, W1M,
 85. NW 1/4 SEC 98, T4P, 35N, R6E, W1M,
 86. NW 1/4 SEC 99, T4P, 35N, R6E, W1M,
 87. NW 1/4 SEC 100, T4P, 35N, R6E, W1M,
 88. NW 1/4 SEC 101, T4P, 35N, R6E, W1M,
 89. NW 1/4 SEC 102, T4P, 35N, R6E, W1M,
 90. NW 1/4 SEC 103, T4P, 35N, R6E, W1M,
 91. NW 1/4 SEC 104, T4P, 35N, R6E, W1M,
 92. NW 1/4 SEC 105, T4P, 35N, R6E, W1M,
 93. NW 1/4 SEC 106, T4P, 35N, R6E, W1M,
 94. NW 1/4 SEC 107, T4P, 35N, R6E, W1M,
 95. NW 1/4 SEC 108, T4P, 35N, R6E, W1M,
 96. NW 1/4 SEC 109, T4P, 35N, R6E, W1M,
 97. NW 1/4 SEC 110, T4P, 35N, R6E, W1M,
 98. NW 1/4 SEC 111, T4P, 35N, R6E, W1M,
 99. NW 1/4 SEC 112, T4P, 35N, R6E, W1M,
 100. NW 1/4 SEC 113, T4P, 35N, R6E, W1M,
 101. NW 1/4 SEC 114, T4P, 35N, R6E, W1M,
 102. NW 1/4 SEC 115, T4P, 35N, R6E, W1M,
 103. NW 1/4 SEC 116, T4P, 35N, R6E, W1M,
 104. NW 1/4 SEC 117, T4P, 35N, R6E, W1M,
 105. NW 1/4 SEC 118, T4P, 35N, R6E, W1M,
 106. NW 1/4 SEC 119, T4P, 35N, R6E, W1M,
 107. NW 1/4 SEC 120, T4P, 35N, R6E, W1M,
 108. NW 1/4 SEC 121, T4P, 35N, R6E, W1M,
 109. NW 1/4 SEC 122, T4P, 35N, R6E, W1M,
 110. NW 1/4 SEC 123, T4P, 35N, R6E, W1M,
 111. NW 1/4 SEC 124, T4P, 35N, R6E, W1M,
 112. NW 1/4 SEC 125, T4P, 35N, R6E, W1M,
 113. NW 1/4 SEC 126, T4P, 35N, R6E, W1M,
 114. NW 1/4 SEC 127, T4P, 35N, R6E, W1M,
 115. NW 1/4 SEC 128, T4P, 35N, R6E, W1M,
 116. NW 1/4

CLIENT:	JOHN JANICKI		
ISSUE DATE:	07/23/2019		
DWG. NO.:	18030-BLA-5-Lots.dwg		
JOB NO.:	18030	F.B. NO.	J-01
DRAWN BY:	DRM	SHEET:	
CHECKED BY:	CMJ	3 of 4	



RECORD OF SURVEY FOR PUNKIN CENTER BOUNDARY LINE ADJUSTMENT

BEING PORTIONS OF THE NE 1/4, SE 1/4, SW 1/4, NW 1/4 OF THE NW 1/4 & THE NW 1/4 OF THE NE 1/4
OF SECTION 14, TOWNSHIP 35 N., RANGE 6 E. OF W.M., TOWN OF HAMILTON, SKEGOT COUNTY, WASHINGTON



- EASEMENTS DEPICTED:**
1. A NON-EXCLUSIVE EASEMENT FOR WATER MAIN AND RELATED ACCESSORIES AS RECORDED UNDER PROJECT NO. 2007003103.
 2. A NON-EXCLUSIVE UTILITY EASEMENT AS RECORDED UNDER AUDITOR'S FILE NO. 200800280170.
 3. A NON-EXCLUSIVE UTILITY EASEMENT AS RECORDED UNDER AUDITOR'S FILE NO. 200800280170.
 4. A NON-EXCLUSIVE UTILITY EASEMENT AS RECORDED UNDER AUDITOR'S FILE NO. 200800280170.
 5. A NON-EXCLUSIVE UTILITY EASEMENT AS RECORDED UNDER AUDITOR'S FILE NO. 200800280170.
 6. A NON-EXCLUSIVE UTILITY EASEMENT AS RECORDED UNDER AUDITOR'S FILE NO. 200800280170.

THE FOLLOWING EASEMENTS ARE EITHER BLANKET IN NATURE, OR ARE NOT SPECIFIC IN LOCATION AND THEREFORE NOT SHOWN:

1. A ROAD USE EASEMENT RECORDED UNDER PROJECT SITE EASEMENT REGISTRATION LISTED UPON THAT BARGAIN AND SALE DEED AS RECORDED UNDER AUDITOR'S FILE NO. 2007003103.
2. A NON-EXCLUSIVE UTILITY EASEMENT AS RECORDED UNDER AUDITOR'S FILE NO. 200800280170.



JEPSON & ASSOCIATES
REGISTERED PROFESSIONAL ENGINEERS AND LAND SURVEYORS
222 GRAND AVE. SUITE C, BELLINGHAM, WA 98225
PHONE: (360) 735-5860 | FAX: (360) 441-8939 | EMAIL: OJEPSON@JEPSONENGINEERING.COM

CLIENT:	JOHN JACOB
DATE:	07/23/2019
DWG. NO.:	1809-30-5-000-dwg
JOB NO.:	1809
DATE:	7/23/2019
BY:	DAVID SHEET
CHECKED BY:	CM
4 of 4	