

THIS MAP CORRECTLY REPRESENTS A SURVEY MADE UNDER MY DIRECTION IN CONFORMANCE WITH THE REQUIREMENTS OF THE SURVEY RECORDING ACT AT THE REQUEST OF TOM DOWLE.

FREDERIC P. PETERSEN CERT. # 26303



FILED FOR THE RECORD THIS 3rd DAY
JULY 2019 AT 2:24 IN BO
OF SURVEYS ON PAGE 1 ATT
REQUEST OF FREDERIC P. PETERSEN, PLA

AUDITOR'S FILE NO.: 2019070300574

GOV. LOT 5 AND IN THE E 1/2 NW
NE 1/4 SE 1/4; ALL IN SECTION 31,
T35N., R2E., W.M.

ANACORTES, WA., 98221

✚ DENOTES CONTROLLING GLO CORNER

● DENOTES 5/8" REBAR/PLASTIC CAP L.S.
26303 SET BY THIS SURVEY.

⦿ DENOTES REBAR/PLASTIC CAP SET BY
PREVIOUS SURVEYS.

DENOTES REBAR/PLASTIC CAP SET BY
PREVIOUS SURVEYS.

DRAWN BY: F.P.
SURVEY BY: F.P., C.K.

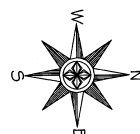
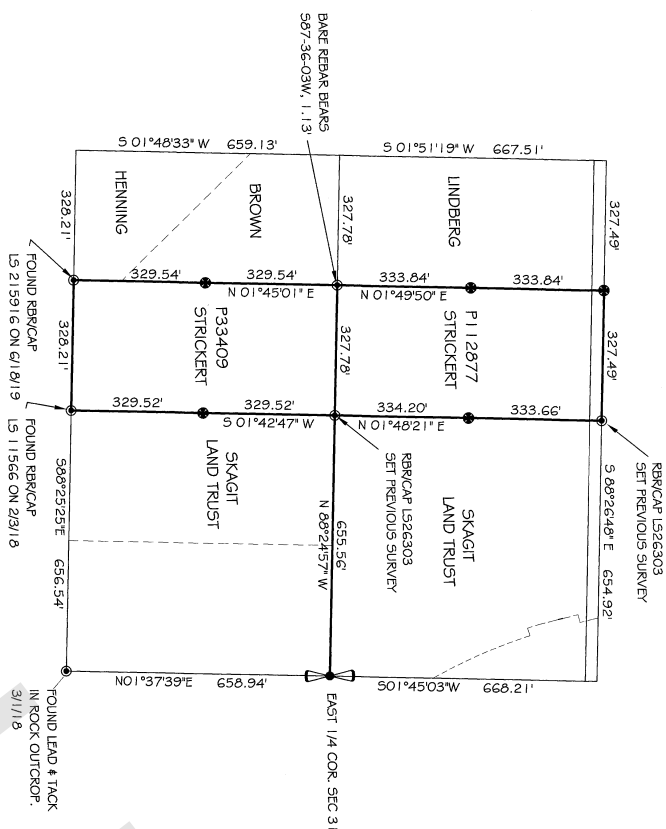
101771

GRAPHIC SCALE

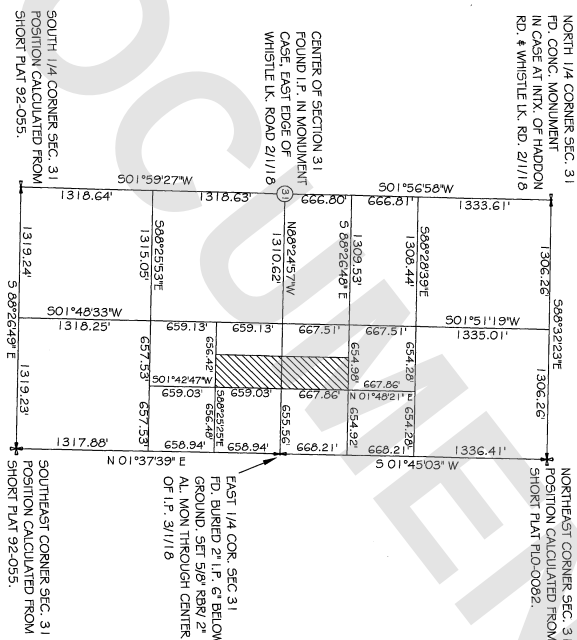
200 0 100 200 400 600 800

(IN FEET)

1 INCH = 200 ft.



E1/2 SECTION 31, T35N., R2E., W.M. SECTION SUBDIVISION DETAIL
1" = 800' SCALE



THIS SURVEY TIED THE CORNER MEASUREMENTS FOUND AT THE CENTER OF SECTION, N1/4 CORNER AND EAST 1/4 CORNER OF SECTION 31, 13.5N., R2E., W.M., THE POSITIONS OF THE NE, SE AND S1/4 CORNERS WERE CALCULATED FROM PREVIOUSLY RECORDED SURVEYS FOUND IN AUDITOR FILE NUMBERS 96.11270057 36004004005, 2004003190031, 200512110059 AND 20110720025. THE BASIS OF BEARINGS FOR THIS SURVEY WAS N86.24.57W BETWEEN THE CORNERS FOUND AT THE EAST 1/4 AND THE CENTER OF SECTION 31 AS PER THE WASHINGTON STATE D.O.T. RECORD OF SURVEY RECORDED UNDER AUDITORS' FILE NUMBER 020905190026.

THE PURPOSE OF THIS SURVEY WAS TO SURVEY THE PERIMETER OF THE CLIENT'S PARCEL, INCLUDING THE SETTING OF ANY MISSING PROPERTY CORNERS AND TO ESTABLISH MIDPOINTS ON LINE BETWEEN THE PROPERTY CORNERS.