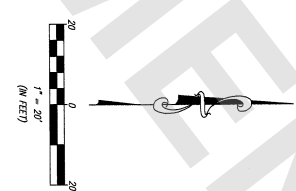
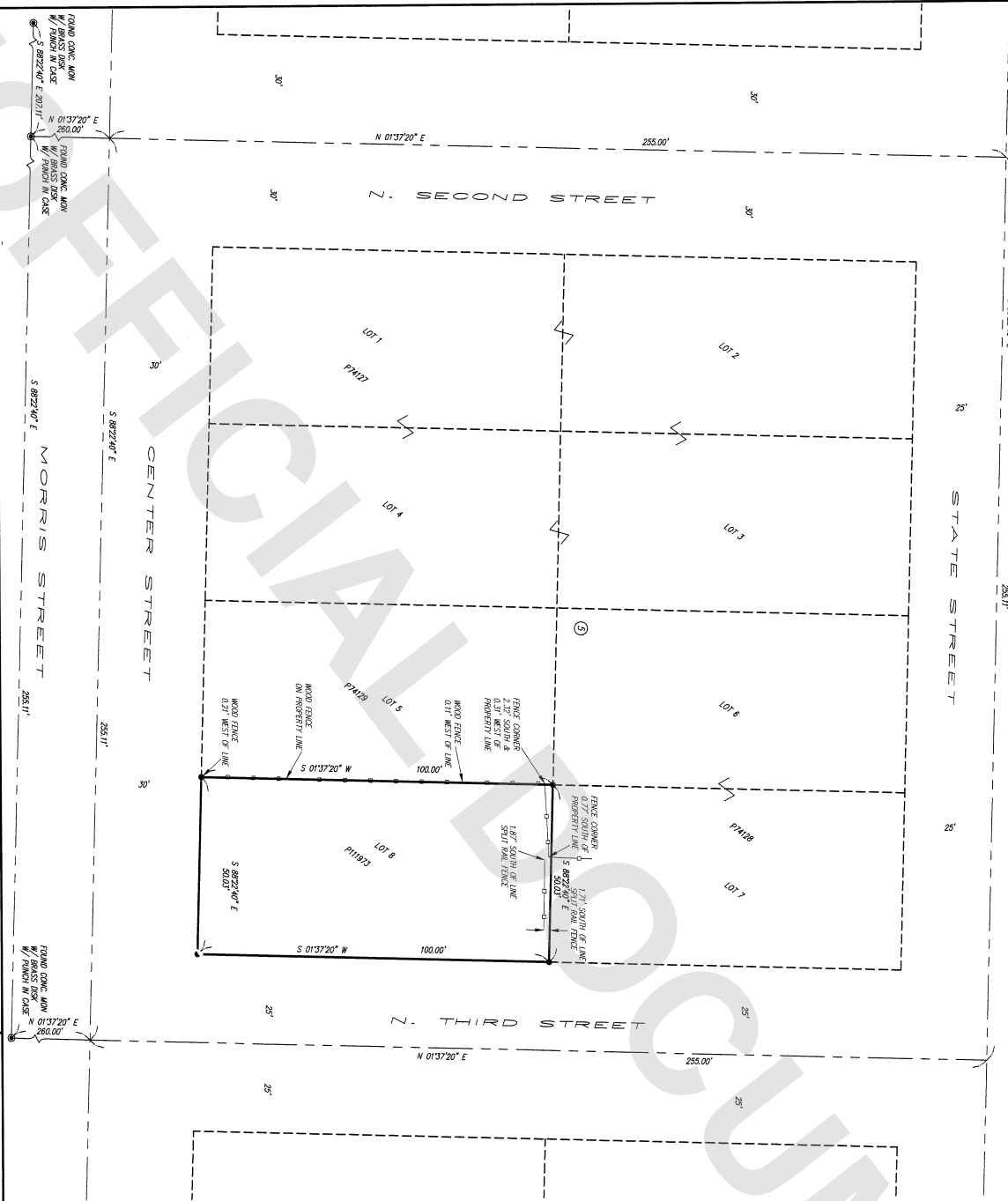


SW 1/4 OF THE NE 1/4 SECTION 36, TWP. 34 N., RNG. 02 E., WM.
 SKAGIT COUNTY, WASHINGTON



LEGAL DESCRIPTION
 LOT 2, BLOCK 5, COURAIN ADDITION TO THE TOWN OF LA CORNER RECORDS OF SKAGIT COUNTY, WASHINGTON. STATE IN THE TOWN OF LA CORNER, COUNTY OF SKAGIT, STATE OF WASHINGTON.

NOTES:

1. INSTRUMENT DATA -
 1086 STATION - 1824 2089286
 GPS - LEICA 5100 PANDA & GPS OBSERVATIONS
2. FIELD PHOTO LOGS - PARADISE & GPS OBSERVATIONS
3. FIELD PHOTO LOGS - PARADISE & GPS OBSERVATIONS
4. MONUMENTS NOTED - DECEMBER 2017
5. BASIS OF BEARING - S 89°22'40" E - FOUND MONUMENTS WASHINGTON STATE PLANE NORTH COORDINATES NAD 83/91 GPS OBSERVATIONS
6. PRECISION OF REVERSE CLOSURE MEETS OR EXCEEDS WASHINGTON STATE PLANE NORTH COORDINATES NAD 83/91 GPS OBSERVATIONS
7. RETRIEVE MATERIALS -
 NOS #14 9402540085
 NOS #14 200205840059

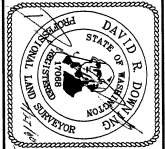
LEGEND

- SET 1/2" X 24" PIN NOD WITH CAP NO. 17068
- ⊙ MONUMENTS FOUND

AUDITOR'S CERTIFICATE:
 FILED FOR RECORD THIS 31 DAY OF JUN 2018
 AT 10:28 AM, IN BOOK OF SURVEYS, PAGE
 UNDER AUDITOR'S FILE NO: 201807310030

SURVEYOR'S CERTIFICATE:
 THIS MAP CORRECTLY REPRESENTS A SURVEY MADE
 BY ME OR UNDER MY DIRECTION IN CONFORMANCE
 WITH THE REQUIREMENTS OF THE SURVEY ACT, AT
 THE REQUEST OF DAVID & DEBRA SPARKS THIS
 12TH DAY OF JANUARY, 2018.

DAVID R. DOWNING
 PROFESSIONAL LAND SURVEYOR
 MARSWALLE, WA, 98270
 (360) 653-5385



DAVID & DEBRA SPARKS
 RECORD OF SURVEY FOR

DATE: 01/12/18
 DWG BY: KRJ
 JOB#: 17-079
 SHEET 1 OF 1