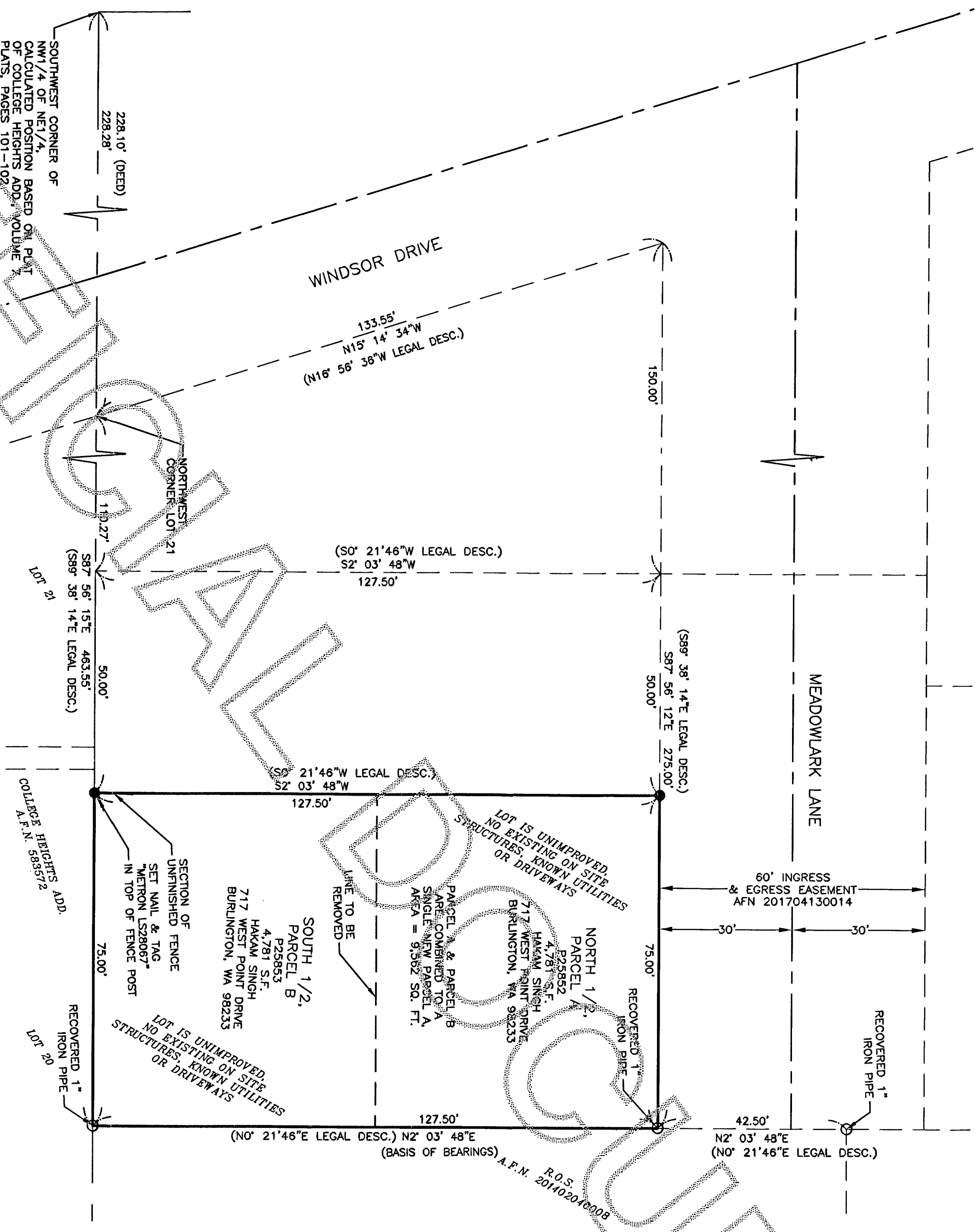
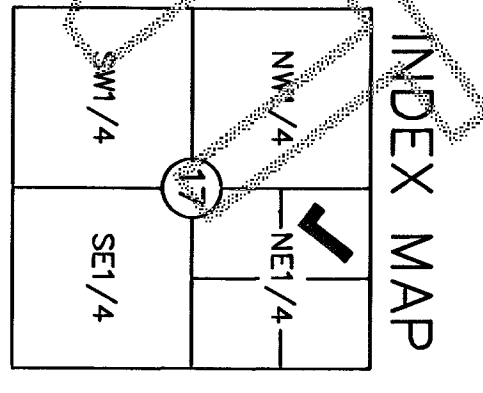


CITY OF MOUNT VERNON
 HAKAM SINGH BOUNDARY LINE ADJUSTMENT
 FILE NO. PL 17-071

201708220075
 \$183.00
 Skagit County Auditor
 8/22/2017 Page 2 of 2 4:07PM

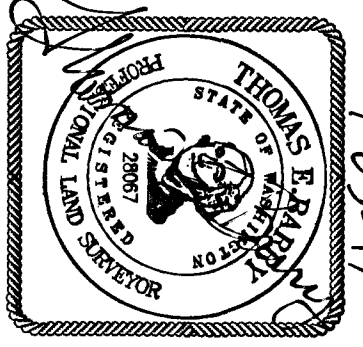


FIELD PROCEDURES AND INSTRUMENTATION

WAC 332-130-090 FIELD TRAVERSE STANDARDS FOR LAND BOUNDARY SURVEYS: THIS LAND BOUNDARY SURVEY WAS CONDUCTED USING FIELD TRAVERSE TECHNIQUES INCORPORATING DIRECT, INDIRECT AND INVERSE MEASUREMENTS THAT MEET THE MINIMUM STANDARDS OF LINEAR AND ANGULAR CLOSURES AS SET FORTH WAC 332-130-090.

WAC 332-130-100 EQUIPMENT AND PROCEDURES: THE EQUIPMENT THAT WAS USED TO CONDUCT THIS LAND BOUNDARY SURVEY INCLUDED A COMBINATION OF TOTAL STATION POSITIONING SYSTEM (TSP) AND GLOBAL POSITIONING SYSTEM (GPS) BASED ON MANUFACTURERS SPECIFICATIONS THE TSP STANDARD LINEAR ACCURACY IS 2MM+2 PPM AND TSP STANDARD ANGULAR ACCURACY IS 3 SECONDS. BASED ON MANUFACTURERS SPECIFICATIONS THE STATIC SURVEY ACCURACY OF THE GPS SYSTEM HAS A HORIZONTAL ACCURACY OF 5MM+(1PPM*BASELINE LENGTH) AND AN AZIMUTH ACCURACY OF 1 ARC SECOND + (5/BASELINE LENGTH) IN KM).

PROCEDURES USED TO ACCOMPLISH THIS SURVEY INCLUDED A COMBINATION OF RADIAL MEASUREMENTS, OPEN TRAVERSE AND CLOSED TRAVERSE METHODS.



7-03-17

A.F.N.

METTRON

and ASSOCIATES INC.
 LAND SURVEYS, MAPS, AND LAND USE PLANNING

307 N. OLYMPIC, SUITE 205
 ARLINGTON, WASHINGTON 98223
 (360) 435-3777 FAX (360) 435-4822
 Copyright reserved 2017 © Metron and Associates, Inc.

DATE: MAY 2017 BY: V.S.W. SCALE: 1" = 20'
 PROJECT NO. 17062 F.B. 4-34-

RECORD OF SURVEY

CITY OF MOUNT VERNON
 BOUNDARY LINE ADJUSTMENT
 FILE NO. PL 17-071

FOR
 HAKAM SINGH
 A PORTION OF THE N.W. 1/4, N.E. 1/4
 SECTION 17, TOWNSHIP 34 NORTH, RANGE 4 EAST, W.M.
 CITY OF MOUNT VERNON, STATE OF WASHINGTON
 SHEET 2 OF 2

REV 01 VSW 6-26-17

- LEGEND**
- SURVEY MARKER RECOVERED, AS NOTED, JUNE 2017
 - SET SURVEY MARKER, 5/8" REBAR WITH CAP "METRON 28067" UNLESS OTHERWISE NOTED, JUNE 2017
- BASIS OF BEARING**
- THE WEST LINE OF RECORD OF SURVEY AFN 20140204008 AS MONUMENTED AND SHOWN HEREON BEARS NORTH 2° 03' 48" EAST.

