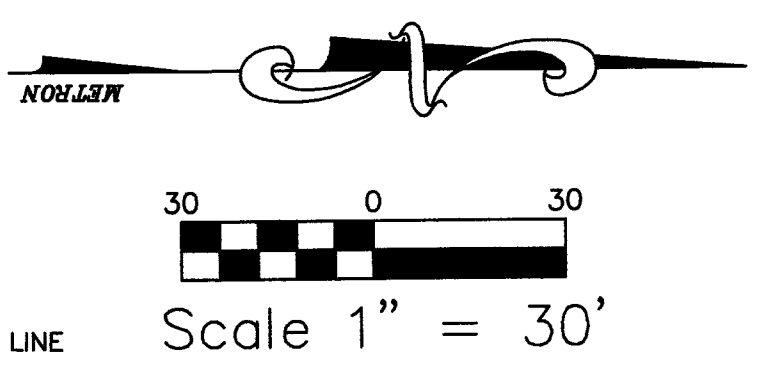




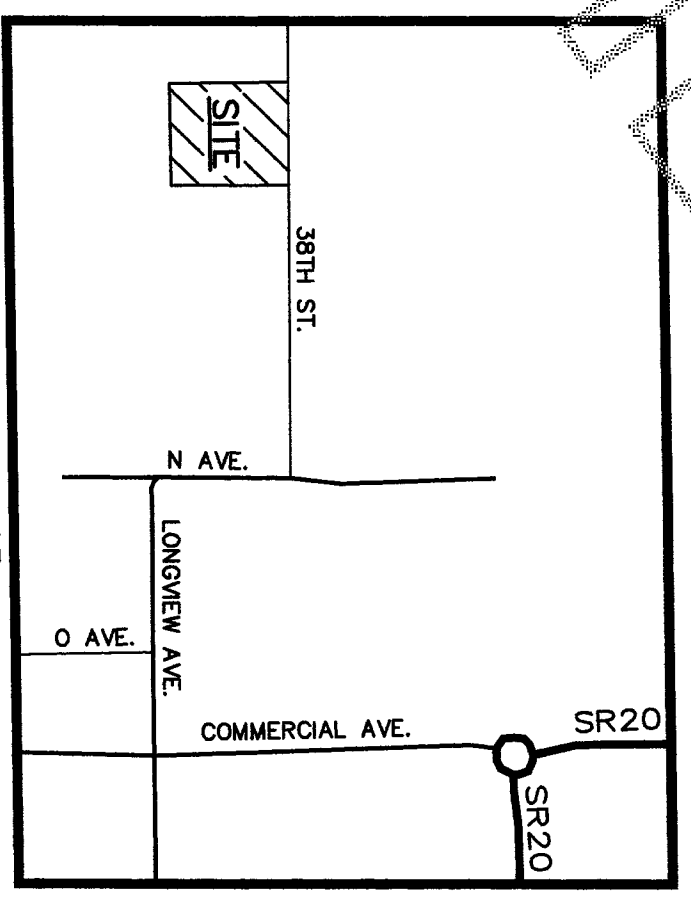
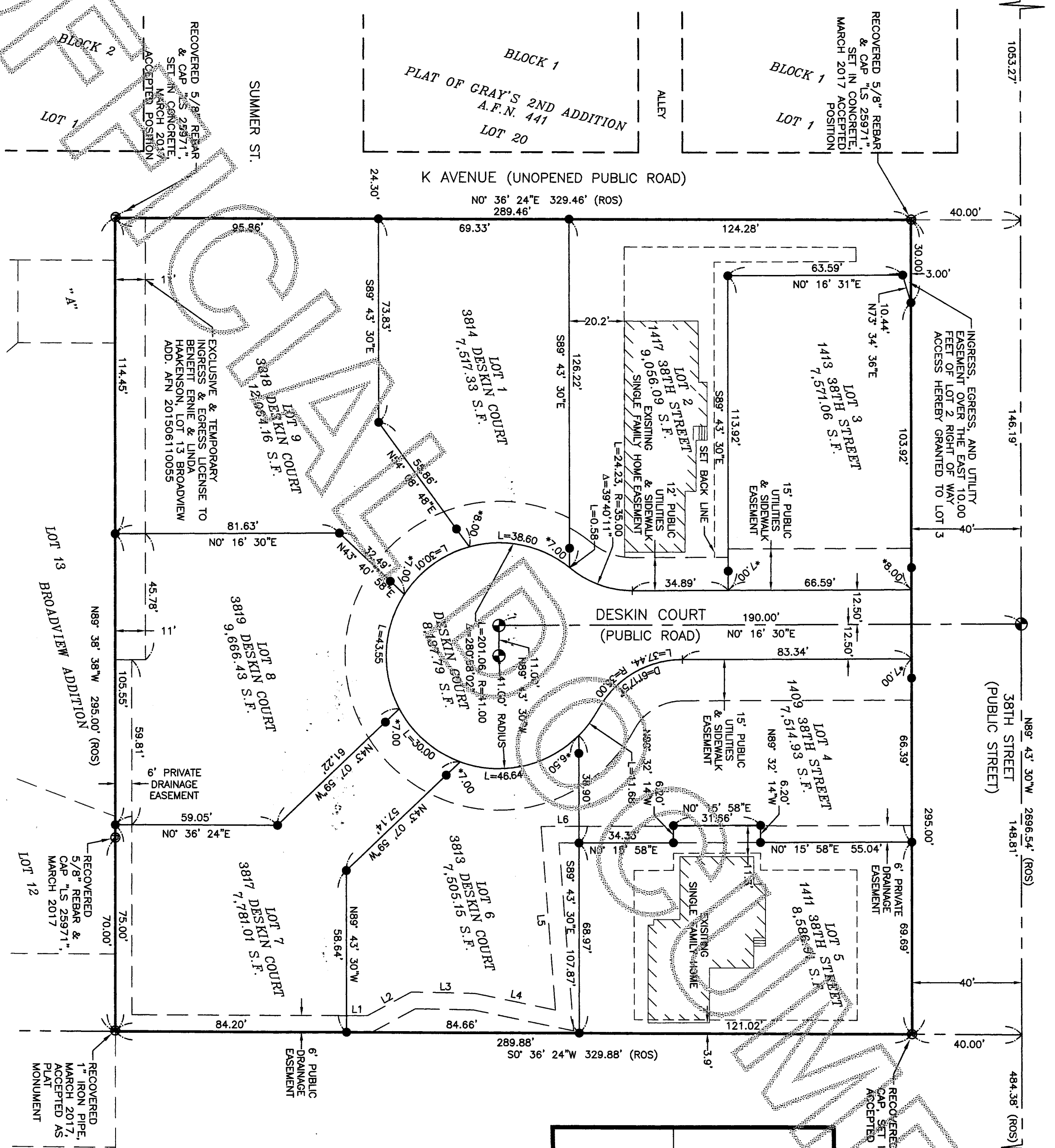
RECOVERED PUNCH MARK IN 1-3/4" BRASS DISC IN 4"x4" CONCRETE MONUMENT, 0.3' DEEP, IN CASE MARCH 2017, ACCEPTED AS CENTER QUARTER CORNER OF SECTION 25

CITY OF ANACORTES SHORT PLAT NO. SPL-2015-0006  
38TH ST. 9-LOT SHORT PLAT FOR THOMAS L. ALLEN

RECOVERED LEAD AND TACK IN CONCRETE MONUMENT IN CASE MARCH 2017, ACCEPTED AS EAST 1/4 CORNER SECTION 25 AS SHOWN ON RECORD OF SURVEY, A.F.N. 200506150088.



- LEGEND**
- ⊗ RECOVERED SURVEY MONUMENT AS NOTED
  - ⊙ SURVEY MARKER RECOVERED MARCH 2017, AS NOTED
  - SET 5/8" X 24" REBAR WITH CAP STAMPED "METRON LS 28067"
  - (ROS) RECORD OF SURVEY DISTANCE PER A.F.N. 200506150088
  - ⊕ SET STANDARD CITY MONUMENT WITH BRASS CAP STAMPED "28067" IN MONUMENT WELL CASE
  - \*X.XX DISTANCE FROM SET PROPERTY LINE REBAR TO RIGHT OF WAY LINE



**LINE TABLE**

L1	7.72'	N0° 36' 24"E
L2	18.13'	N27° 53' 13"W
L3	23.09'	N1° 34' 27"E
L4	28.85'	N12° 09' 26"E
L5	68.84'	S85° 54' 22"W
L6	13.75'	N0° 15' 38"E

**BASIS OF BEARING**  
THE NORTH LINE OF SOUTHEAST 1/4 AS MONUMENTED AND SHOWN HEREON BEARS NORTH 89°43'30" WEST

**RESEARCH**  
RECORD OF SURVEY A.F.N. 200506150088  
PLAT OF GRAY'S 2ND ADDITION A.F.N. 441  
PLAT OF BROADVIEW ADDITION A.F.N. 506534

**SURVEY NOTE:**  
SOUTHEAST QUARTER SECTION SUBDIVISION AND BOUNDARY SOLUTION PER RECORD OF SURVEY A.F.N. 200506150088

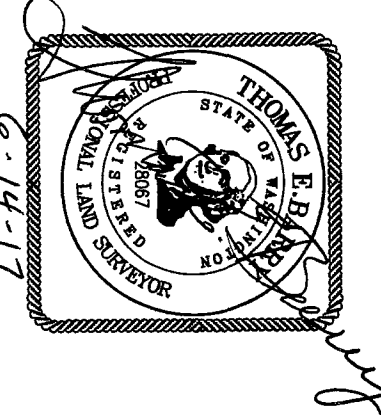
**DECLARANT:**  
THOMAS L. ALLEN  
P.O. BOX 817  
ANACORTES, WA 98221  
350125-0-073-0001(932055)  
350125-0-074-0000(932056)  
350125-0-075-0009(932057)  
1411 38TH STREET, ANACORTES, WA 98221

**FIELD PROCEDURES AND INSTRUMENTATION**

MAC 352-130-090 FIELD TRAVERSE STANDARDS FOR LAND BOUNDARY SURVEYS. THIS LAND BOUNDARY SURVEY WAS CONDUCTED USING FIELD TRAVERSE TECHNIQUES INCORPORATING DIRECT AND INVERSE MEASUREMENTS THAT MEET THE MINIMUM STANDARDS OF LINEAR AND ANGULAR CLOSURE AS SET FORTH WAC 352-130-090.

MAC 432-130-100 EQUIPMENT AND PROCEDURES. THE EQUIPMENT THAT WAS USED TO CONDUCT THIS LAND BOUNDARY SURVEY INCLUDED A COMBINATION OF TOTAL STATION POSITIONING SYSTEM (TSP) AND GLOBAL POSITIONING SYSTEM (GPS), BASED ON MANUFACTURERS SPECIFICATIONS THE TSP STANDARD LINEAR ACCURACY IS 2MM+2 PPM AND TSP STANDARD ANGULAR ACCURACY IS 3 SECONDS. BASED ON MANUFACTURERS SPECIFICATIONS THE STATIC SURVEY ACCURACY OF THE GPS SYSTEM HAS A HORIZONTAL ACCURACY OF 5MM+(1PPM\*BASELINE LENGTH) AND AN AZIMUTH ACCURACY OF 1 ARC SECOND + (5)/BASELINE LENGTH IN KM).

PROCEDURES USED TO ACCOMPLISH THIS SURVEY INCLUDED A COMBINATION OF RADIAL MEASUREMENTS, OPEN TRAVERSE AND CLOSED TRAVERSE METHODS.



**METRON**  
and ASSOCIATES INC.  
LAND SURVEYS, MAPS, AND LAND USE PLANNING  
307 N. OLYMPIC, SUITE 205  
ARLINGTON, WASHINGTON 98223  
(360) 435-3777 FAX (360) 435-4822  
Copyright reserved 2017 © Metron and Associates, Inc.

DATE: MARCH 2017 BY: VSW  
PROJECT NO. 16093  
SCALE: 1" = 30'  
F.B. 1-35-2

REV 03 VSW 5/19/17  
38TH ST. 9-LOT SHORT PLAT  
CITY OF ANACORTES SHORT PLAT NO. SPL-2015-0006

FOR  
**THOMAS L. ALLEN**  
A PORTION OF THE NW 1/4 OF THE SE 1/4 SECTION 25,  
TOWNSHIP 35 NORTH, RANGE 1 EAST, WM.,  
CITY OF ANACORTES,  
WASHINGTON