

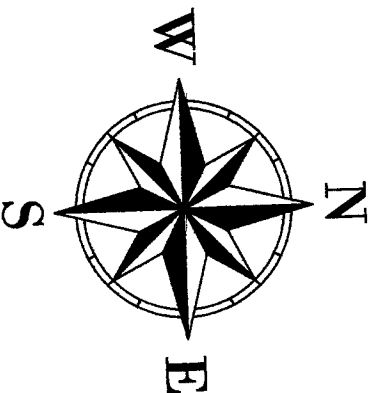
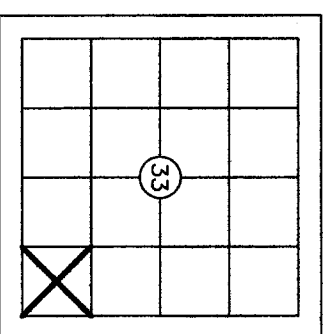
**LEGAL DESCRIPTION:**

THE SOUTHWEST QUARTER OF THE SOUTHWEST QUARTER OF THE SOUTHEAST QUARTER OF THE SOUTHWEST QUARTER OF SECTION 33, TOWNSHIP 33 NORTH, RANGE 10 EAST, W.M.; EXCEPT THAT PORTION LYING WESTERLY OF A FENCE LINE AS DESCRIBED IN DOCUMENT RECORDED OCTOBER 10, 1994 UNDER AUDITOR'S FILE NO. 9410100058, SITUATED IN SKAGIT COUNTY, WASHINGTON.

201702230067  
Skagit County Auditor  
2/23/2017 Page 1 of 1 11:25AM \$197.00

NOTE:  
FOR ADDITIONAL SUBDIVISION INFORMATION, SEE SHORT PLAT RECORDED UNDER AUDITOR'S FILE NO. 200305130080, RECORDS OF SKAGIT COUNTY, WASHINGTON.

NOTE:  
BOUNDARIES ESTABLISHED PER THIS SURVEY MAY NOT CONFORM TO EXISTING LINES OF OCCUPATION AND FENCE LINES AND COULD RESULT IN POSSIBLE BOUNDARY DISPUTES.



**GRAPHIC SCALE**

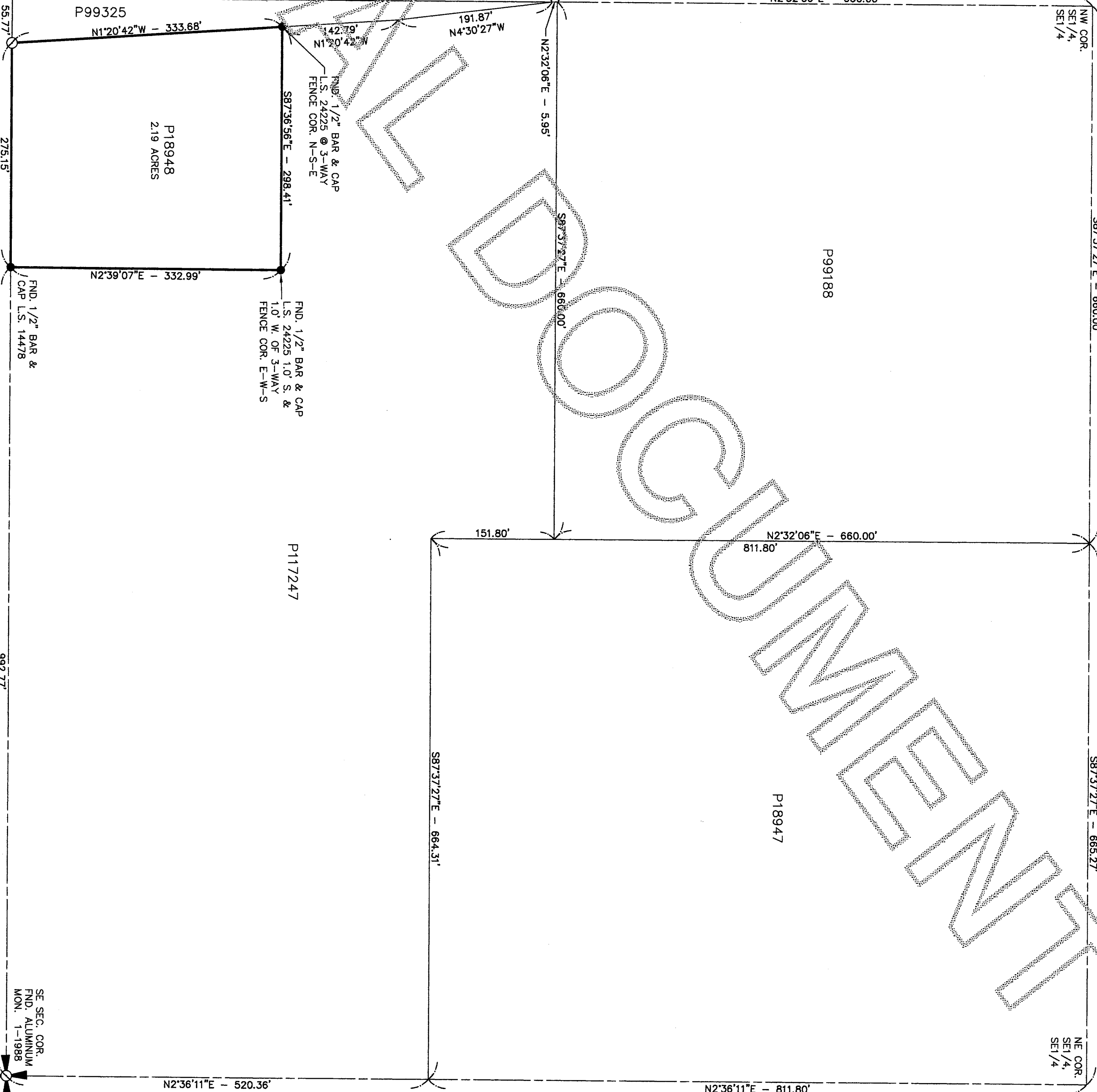
1 inch = 100 ft.  
BASIS OF BEARINGS: LINE BETWEEN S1/4 COR. & S.E. SEC. COR. PER SHORT PLAT AFN 200305130080

THIS SURVEY DOES NOT PURPORT TO SHOW ALL EASEMENTS OF RECORD OR OTHERWISE. SURVEY INSTRUMENT USED: SOKKIA SET 5 SURVEY INSTRUMENT USED: TOPCON DS SURVEY PROCEDURE: CLOSED TRAVERSE SURVEY PRECISION: THIS SURVEY EXCEEDS FIELD TRAVERSE REQUIREMENTS OF WAC 332.430-090

**LEGEND:**  
○ DENOTES 1/2" x 24" REBAR & CAP L.S. 12/716 SET THIS SURVEY UNLESS OTHERWISE NOTED

S1/4 COR.  
FND. CON. MON.  
W/BRASS CAP  
7-1984

SW COR.  
SET 1/4  
SET 1/4



Survey For: **DALE JOHNSON**  
PORTIN SET 1/4, SET 1/4, SEC. 33, TWP. 33N, RGE. 10E, W.M.

Survey By: **Cascade Surveying & Engineering, Inc.**  
(360)-435-5551  
V: \21299\DWG\21299-ROS.DWG (ROS)  
P.O. BOX 326, ARLINGTON, WASHINGTON, 98223 (105 EAST DIVISION STREET)



**RECORDING CERTIFICATE**  
FILED FOR RECORD BY:  
CASCADE SURVEYING & ENGINEERING, INC.  
THIS SURVEY WAS RECORDED ON 2/23/2017 AT 11:25 AM. AND RECORDED UNDER AUDITOR'S FILE NO. 201702230067. RECORDS OF SKAGIT COUNTY, WASHINGTON.

**SURVEYOR'S CERTIFICATE**  
THIS MAP CORRECTLY REPRESENTS A SURVEY MADE BY ME OR UNDER MY DIRECTION IN CONFORMANCE WITH THE REQUIREMENTS OF THE SURVEY RECORDING ACT. AT THE REQUEST OF DALE JOHNSON  
IN FEBRUARY 2017

SCALE: 1"=100'  
DRAWN BY: LAF  
CHECKED BY: EP  
FIELD SURVEY: 2/17/2017  
JOB #: 21299  
F.B.#: SK 68

AUDITOR'S FILE #

REGISTERED LAND SURVEYOR

SE SEC. COR.  
FND. ALUMINUM  
MON. 1-1988

P18948  
2.19 ACRES

P117247

P99188

P18947

2-21-17

992.77

1332.68'

55.77'

275.15'

87'

36'

47'

992.77

992.77

992.77

992.77

992.77

992.77

992.77

992.77

992.77

992.77

992.77

992.77

992.77

992.77

992.77

992.77

992.77

992.77

992.77

992.77

992.77

992.77

992.77

992.77

992.77

992.77

992.77

992.77

992.77

992.77

992.77

992.77

992.77

992.77

992.77

992.77

992.77

992.77

992.77

992.77

992.77

992.77

992.77

992.77

992.77

992.77

992.77

992.77

992.77

992.77

992.77

992.77

992.77

992.77

992.77

992.77

992.77

992.77

992.77

992.77

992.77

992.77

992.77

992.77

992.77

992.77

992.77

992.77

992.77

992.77

992.77

992.77

992.77

992.77

992.77

992.77

992.77

992.77

992.77

992.77

992.77

992.77

992.77

992.77

992.77

992.77

992.77

992.77

992.77

992.77

992.77

992.77

992.77

992.77

992.77

992.77

992.77

992.77

992.77

992.77

992.77

992.77

992.77

992.77

992.77

992.77

992.77

992.77

992.77

992.77

992.77

992.77

992.77

992.77

992.77

992.77

992.77

992.77

992.77

992.77

992.77

992.77

992.77

992.77

992.77

992.77

992.77

992.77

992.77

992.77

992.77

992.77

992.77

992.77

992.77

992.77

992.77

992.77

992.77

992.77

992.77

992.77

992.77

992.77

992.77

992.77

992.77

992.77

992.77

992.77

992.77

992.77

992.77

992.77

992.77

992.77

992.77

992.77

992.77

992.77

992.77

992.77

992.77

992.77

992.77

992.77

992.77

992.77

992.77

992.77

992.77

992.77

992.77

992.77

992.77

992.77

992.77

992.77

992.77

992.77

992.77

992.77

992.77

992.77

992.77

992.77

992.77

992.77

992.77

992.77

992.77

992.77

992.77

992.77

992.77

992.77

992.77

992.77

992.77

992.77

992.77

992.77

992.77

992.77

992.77

992.77

992.77

992.77

992.77

992.77

992.77

992.77

992.77

992.77

992.77

992.77

992.77

992.77

992.77

992.77

992.77

992.77

992.77

992.77

992.77

992.77

992.77

992.77

992.77

992.77

992.77

992.77

992.77

992.77

992.77

992.77

992.77

992.77