

Return Name & Address:



Skagit County Auditor \$74.00
3/8/2016 Page 1 of 2 1:53PM

SKAGIT COUNTY PLANNING & DEVELOPMENT SERVICES
LOT OF RECORD CERTIFICATION

File Number: PL_15-0607_____

Applicant Name: __Lee Graber__

Property Owner Name: __Grabr E/C Trustees and Graber Living Trust__

Having reviewed the information provided by the applicant, the Department hereby finds that the parcel(s) bearing Skagit County Parcel Number(s):

P#(s): _33278; 350231-0-020-0105; within a Ptn of the SE ¼ of the NE ¼ of Sec 31, Twp. 35, Rge 2

Lot Size: _approximately 5 acres

1. CONVEYANCE

X **IS**, a Lot of Record as defined in Skagit County Code (SCC) 14.04.020 or owned by an innocent purchaser who has met the requirements described in SCC 14.18.000(9) and RCW 58.17.210 and therefore IS eligible for conveyance

IS NOT, a Lot of Record as defined in SCC 14.04.020 or owned by an innocent purchaser who has met the requirements described in SCC 14.18.000(9) and RCW 58.17.210 and therefore IS NOT eligible for conveyance or development.

2. DEVELOPMENT

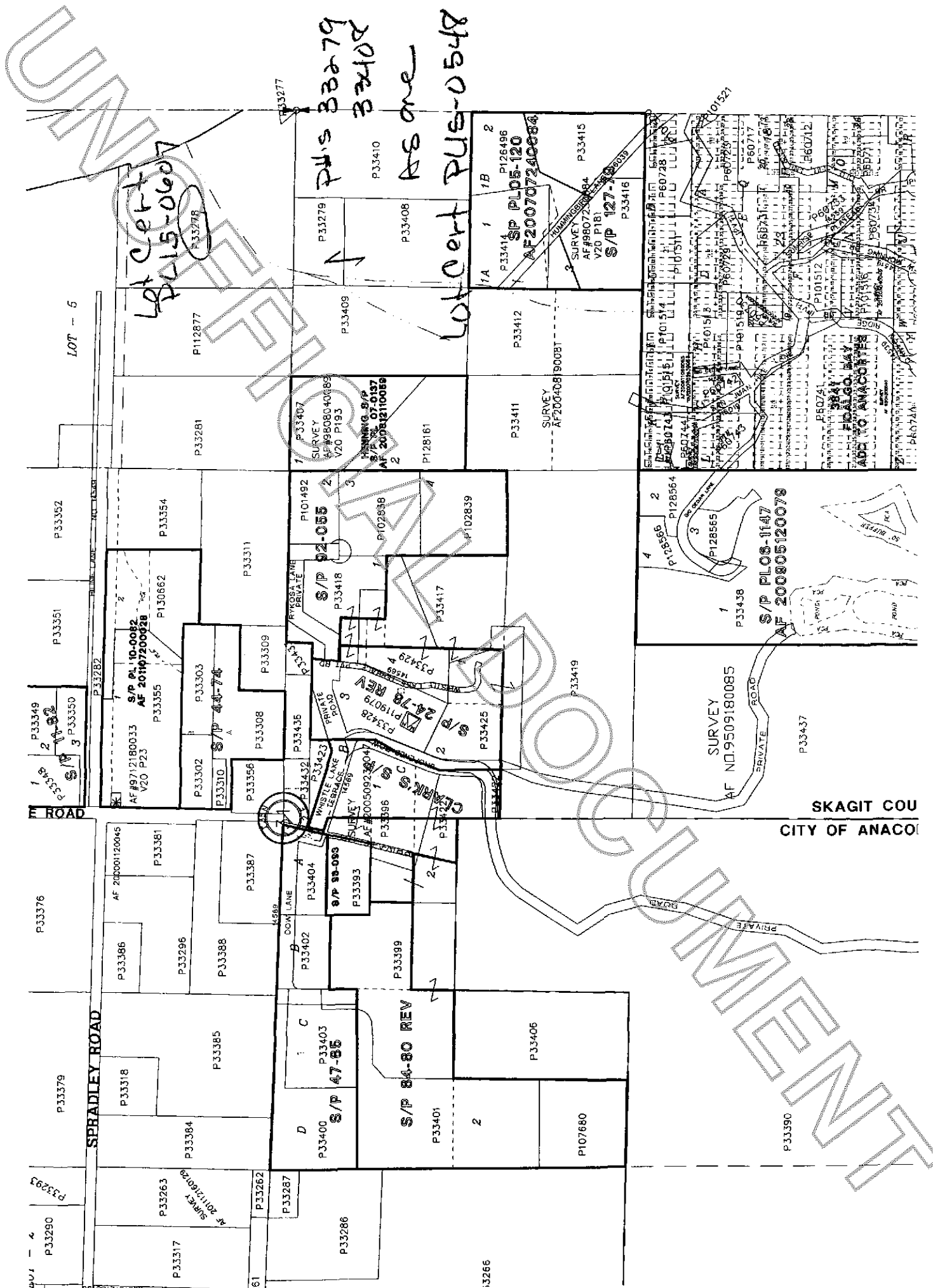
X **IS**, the minimum lot size required for the Rural Intermediate zoning district in which the lot is located and therefore IS eligible to be considered for development permits.

IS NOT, the minimum lot size required for the _____ zoning district in which the lot is located, but does meet an exemption listed in SCC 14.16.850(4)(c)(i) and therefore IS eligible to be considered for development permits.

Authorized Signature: Mark Roeder

Date: _ 2/18/2016

See attached map for Lot of Record boundaries.



LOT - 5

SPRADLEY ROAD

M ROAD

PRIVATE ROAD

PRIVATE ROAD

SKAGIT COU
CITY OF ANACON

Lot Cert
P15-0607

P15 33279
33402

AS one

Lot Cert
P15-0548

P33349
S/P 10-82
P33348
2
3 P33350

S/P 10-0082
AF #9712180033
V20 P23
P33355

S/P 48-74
P33302
P33310
P33356

S/P 24-78 REV
P33423
P33424
P33425

S/P 84-80 REV
P33399

S/P 47-85
P33400
P33403

S/P 24-78 REV
P33426
P33427

S/P 84-80 REV
P33401

S/P 10-0082
AF NO. 9509180085

S/P PLOS-1147
AF 200805120079

S/P 02-055
P33418

S/P 127-78-2059
P33416

S/P 127-78-2059
P33415

P33352

P33354

P33308

P33309

P33436

P33417

P33419

P33419

P33437

P33438

P33437

P33437

P33437

P33281

P33281

P33281

P33281

P33281

P33281

P33281

P33281

P33281

P33281

P33281

P33281

P33281

P33281

P33281

P33281

P33281

P33281

P33281

P33281

P33281

P33281

P33281

P33281

P33281

P33281

P33281

P33281

P33281

P33281

P33281

P33281

P33281

P33281

P33281

P33281

P33281

P33281

P33281

P33281

P33281

P33281

P33281

P33281

P33281

P33281

P33281

P33281

P33281

P33281

P33281

P33281

P33281

P33281

P33281

P33281

P33281

P33281

P33281

P33281

P33281

P33281

P33281

P33281

P33281

P33281

P33281

P33281

P33281

P33281

P33281

P33281

P33281

P33281

P33281

P33281

P33281

P33281

P33281

P33281

P33281

P33281

P33281

P33281

P33281

P33281

P33281

P33281

P33281

P33281

P33281

P33281

P33281

P33281

P33281

P33281

P33281

P33281

P33281

P33281

P33281

P33281

P33281

P33281

P33281

P33281

P33281

P33281

P33281

P33281

P33281

P33281

P33281

P33281

P33281

P33281

P33281

P33281

P33281

P33281

P33281

P33281

P33281

P33281

P33281

P33281

P33281

P33281

P33281

P33281

P33281

P33281

P33281

P33281

P33281

P33281

P33281

P33281

P33281

P33281

P33281

P33281

P33281

P33281

P33281

P33281

P33281

P33281

P33281

P33281

P33281

P33281

P33281

P33281

P33281

P33281

P33281

P33281

P33281

P33281

P33281

P33281

P33281

P33281

P33281

P33281

P33281

P33281

P33281

P33281

P33281

P33281

P33281

P33281

P33281

P33281

P33281

P33281

P33281

P33281

P33281

P33281

P33281

P33281

P33281

P33281

P33281

P33281

P33281

P33281

P33281

P33281

P33281

P33281

P33281

P33281

P33281

P33281

P33281

P33281

P33281

P33281

P33281

P33281

P33281

P33281

P33281

P33281

P33281

P33281

P33281

P33281

P33281

P33281

P33281

P33281

P33281

P33281

P33281

P33281

P33281

P33281

P33281

P33281

P33281

P33281

P33281

P33281

P33281

P33281

P33281

P33281

P33281

P33281

P33281

P33281

P33281

P33281

P33281

P33281

P33281

P33281

P33281

P33281

P33281

P33281

P33281

P33281

P33281

P33281

P33281

P33281

P33281

P33281

P33281

P33281

P33281

P33281

P33281

P33281

P33281

P33281

P33281

P33281

P33281

P33281

P33281

P33281

P33281

P33281

P33281

P33281

P33281

P33281

P33281

P33281

P33281

P33281

P33281

P33281

P33281

P33281

P33281

P33281

P33281