

RECORD OF SURVEY OF
A PORTION OF NE1/4 OF THE SE1/4 OF SECTION 22,
T. 35 N., R. 05 E., W.M.
SKAGIT COUNTY, WASHINGTON

201512220065
Skagit County Auditor
12/22/2015 Page 1 of 1 10:31AM

\$157.00

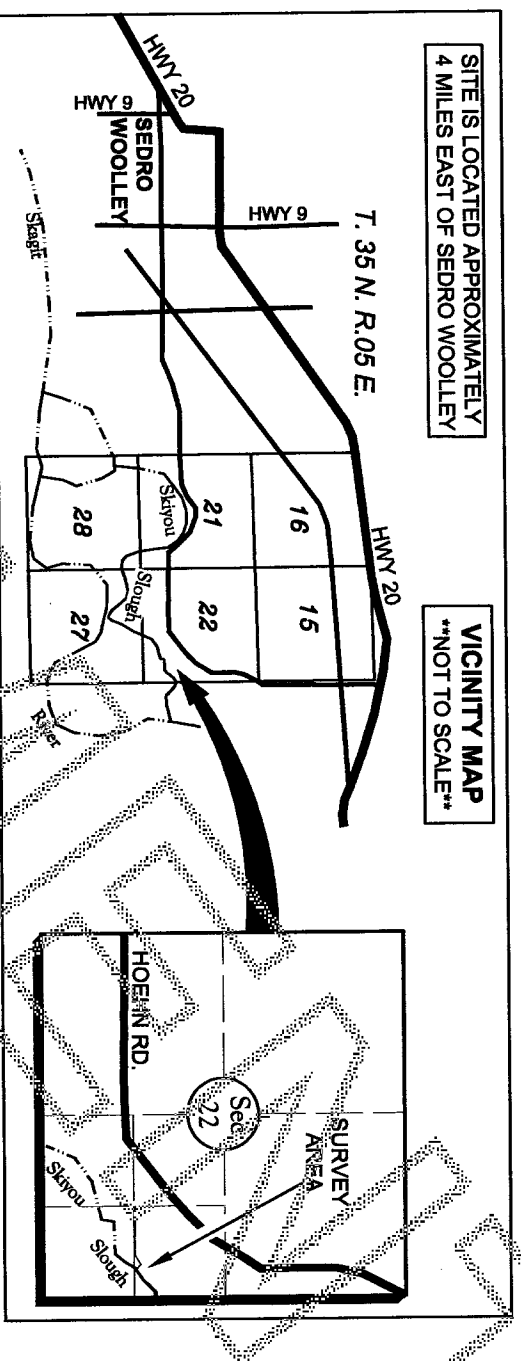
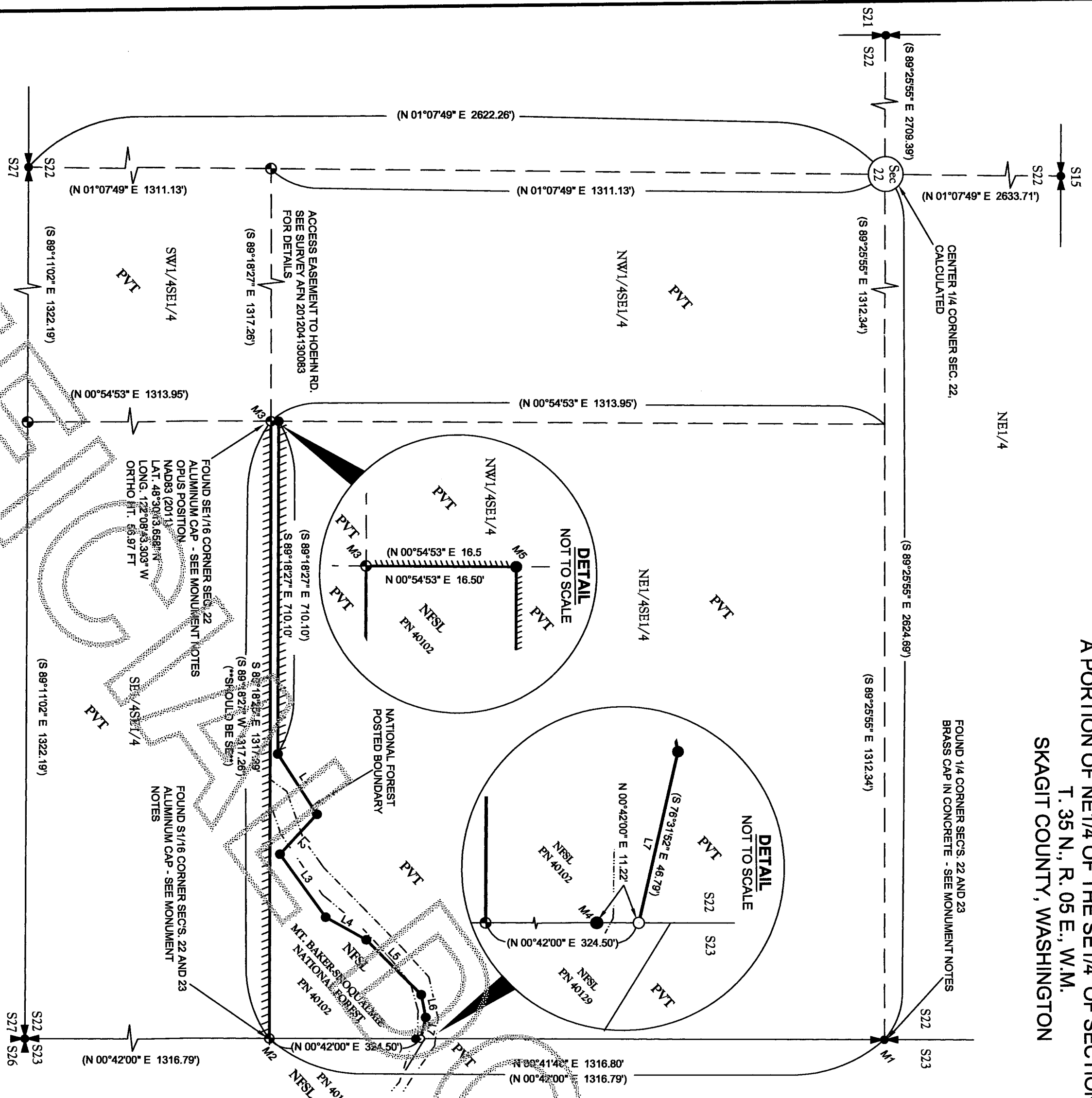
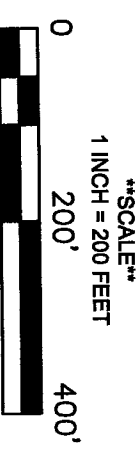
GRID - WASHINGTON STATE PLANE, NORTH ZONE
MAGNETIC SCALE FACTOR = 0.9998549
CONVERGENCE ANGLE = -0°58'37"
(COMPUTED AT SE1/16 CORNER SECTION 22)
SCALE = 1 INCH = 200 FEET

LINE TABLE

LINE	BEARING	DISTANCE
1	N 57°29'08" E	153.721
2	S 46°31'57" E	116.279
3	N 54°28'08" E	156.111
4	N 26°28'08" E	193.667
5	N 45°28'08" E	168.111
6	N 70°28'08" E	143.667
7	S 78°31'52" E	85.791

LEGEND

- NSRL NATIONAL FOREST SYSTEM LANDS
- PN PARCEL NUMBER SKAGIT COUNTY
- AFN AUDITORS FILE NUMBER, SKAGIT COUNTY
- PVT PRIVATE OWNERSHIP
- RECORD SHOWN ON CASSOU SURVEY, 2012, AFN 201204130083
- U.S.F.S. ALUMINUM MONUMENT, SET BY CASSOU AND NOTED ON HER SURVEY AFN 201204130083
- SET 5/8" X 3/8" LONG ALUMINUM ROD WITH 1/2" DIA. ALUMINUM CAP MKD. LS 42669 2015, SEE MONUMENT NOTES
- ALUMINUM CAP MKD. LS 42669 2015, SEE MONUMENT NOTES
- CALCULATED POINT, NOT SET
- QUARTER CORNER
- NATIONAL FOREST BOUNDARY POSTED THIS SURVEY
- NATIONAL FOREST BOUNDARY POSTED 2012 BY CASSOU, REFRESHED THIS SURVEY
- SECTION SUBDIVISION LINE
- EDGE OF SLOUGH (APPROXIMATE)



NOTES:
THIS SURVEY WAS PERFORMED FOR THE U.S.D.A. FOREST SERVICE WITH BAKERS-SNOQUALMIE NATIONAL FOREST, TO ESTABLISH A COMMON BOUNDARY BETWEEN NATIONAL FOREST LAND AND OTHER LAND OWNERSHIP.
THE BOUNDARY IN THE NE1/4 OF THE SE1/4 OF SECTION 22 IS BASED ON WARRANTY DEED DATED 1978, AFN 871862 AND THE SURVEY DONE UNDER CONTRACT FOR THE U.S. FOREST SERVICE BY CASSOU IN 2012, AFN 201204130083. I FOUND THE METHOD USED BY CASSOU TO CALCULATE THE BOUNDARY TO BE APPROXIMATE. I CONFIRM AND ACCEPT THIS METHOD WHICH I BELIEVE WAS ACTUALLY A GRANT BOUNDARY ADJUSTMENT AND NOT A COMPASS ADJUSTMENT AS STATED BY CASSOU ON HER SURVEY.
BEARINGS AND DISTANCES: BEARINGS AND DISTANCES RETURNED THIS SURVEY, SHOWN HEREON ARE GRID VALUES (NAD 83(2011) WASHINGTON STATE PLANE COORDINATE SYSTEM, NORTH ZONE, T3508N, R0505E, W.M.) OBTAINED FROM DISTANCE MEASUREMENTS AND BEARING VALUES BY 0.9998549 (COMBINED SCALE FACTOR COMPUTED AT SE1/16 CORNER SECTION 22). CONVERGENCE ANGLE = -0°58'37".
ALL LETTERS AND LONGITUDES SHOWN ON THIS DRAWING ARE NAD83 (2011), ORTHO HT. NAVD88(GEOD12B) DERIVED FROM SURVEY GRADE GPS OBSERVATIONS.
EQUIPMENT AND PROCEDURES:
TRIMBLE R8 BASE AND PLYERS, TSC2 DATA COLLECTORS.
PROCEDURES:
THIS SURVEY WAS PERFORMED IN ACCORDANCE WITH THE B.L.M. AND U.S.F.S. STANDARDS AND GUIDELINES FOR CADASTRAL SURVEYS USING GPS. INITIAL CONTROL POINTS WERE ESTABLISHED BY 2 HOUR OR LONGER OBSERVATIONS AND THE OBSERVATIONS AND THE DATA PROCESSED USING NGS (OPUS) AND CONTROLLED BY CORS STATIONS. CONTROL TIES AND SECTION CONTROL WAS PERFORMED USING FAST STATIC AND/OR RTK METHODS WITH RE-OBSERVATIONS AS CHECKS. THE SURVEY MEETS OR EXCEEDS THE STANDARDS IN W.A.C. 332-130-080.

MONUMENT NOTES:
ALL CORNERS FOUND OR SET WERE VISITED IN THE MONTHS OF AUGUST AND NOVEMBER, 2015.
MONUMENTS SET THIS SURVEY ARE 5/8" DIA. X 3/8" LONG ALUMINUM RODS WITH 1/2" DIA. ALUMINUM CAPS MKD. LS 42669 2015. CAPS WERE SET FLUSH WITH THE GROUND WITH A PLASTIC CASED MAGNET BURIED ALONGSIDE. STEEL POSTS WERE SET 3.0 FT. DIST. EACH SIDE OF MONUMENT ON THE PROPERTY LINE, EXCEPT WHERE NOTED BELOW.
M1 - 1/4 CORNER SECS. 22 AND 23, T. 35 N., R. 05 E. (CORNER CODE P-17) HISTORY: ORIGINALLY ESTABLISHED BY WILLIAM JAMESON IN 1978 UNDER GLO CONTRACT. RE-ESTABLISHED BY JOHN ABERNETHY IN 1988 AS SHOWN ON SHORT PLAT FILED IN SKAGIT COUNTY, AFN 846501001. VISITED BY FREDERICK BUCKENMEYER IN 1989 AS SHOWN ON SHORT PLAT FILED IN SKAGIT COUNTY, AFN 896230012. VISITED BY KATHLEEN CASSOU IN 2012 AS SHOWN ON RECORD OF SURVEY, SKAGIT COUNTY AFN 201204130083. FOUND A CONCRETE MONUMENT WITH BRASS CAP MARKED * 735. REE 1/4 S22, S23 1984 SKA SURV. INC. LS 17651. FROM WHICH BEARS:
1) POWER POLE BEARS N 31° W, 61.9 FT. SET TAG, SET NAIL WITH BRASS WASHER LS 27133 IN LOS.
EVIDENCE FOUND:
FOUND BRASS CAP IN CONCRETE MARKED AS SHOWN, FROM WHICH: 1) POWER POLE BEARS N 31° W, 61.9 FT., WITH BEARING TREE TAG, AND BEARS WASHER MARKED LS 27133. CORNER LIES SOUTH OF BUCHAVAN ROAD.

M2 - SOUTH 1/16 CORNER SECS. 22 AND 23, T. 35 N., R. 05 E. (CORNER CODE Q-17) HISTORY: ORIGINALLY ESTABLISHED BY KATHLEEN CASSOU IN 2012 AS SHOWN ON RECORD OF SURVEY, SKAGIT COUNTY AFN 201204130083. SET A 3/8" ALUMINUM ROD WITH 3 1/2" ALUMINUM MONUMENT CAP AT 3 WAY FENCE CORNER (NORTH, SOUTH, EAST). EVIDENCE FOUND:
FOUND FOREST SERVICE ALUMINUM CAP ON ALUMINUM ROD FLUSH WITH GROUND MARKED AS SHOWN.
ALUMINUM POSTS BEAR WEST, 5.0 FT. AND SOUTH, 9.0 FT.

M3 - SE 1/16 CORNER SEC. 22, T. 35 N., R. 05 E. (CORNER CODE Q-18) HISTORY: ORIGINALLY ESTABLISHED BY KATHLEEN CASSOU IN 2012 AS SHOWN ON RECORD OF SURVEY, SKAGIT COUNTY AFN 201204130083. SET A 3/8" ALUMINUM ROD WITH 3 1/2" ALUMINUM MONUMENT CAP, FROM WHICH BEARS: 1) CENTERLINE EAST-WEST GRASS PATH NORTHERLY, 5.7 FT. 2) EAST-WEST BARB WIRE FENCE LINE BEARS SOUTHERLY, 5.4 FT. EVIDENCE FOUND:
FOUND FOREST SERVICE ALUMINUM CAP ON ALUMINUM ROD FLUSH WITH GROUND MARKED AS SHOWN.
ALUMINUM POSTS BEAR NORTH, 1.9 FT. AND EAST, 5.1 FT.

M4 - POINT ON SECTION LINE CALCULATED POINT AT INTERSECTION OF SECTION LINE AND PROPERTY BOUNDARY FALLS IN SLOUGH. WATER LEVEL IN SLOUGH TOO HIGH TO SET MONUMENT. SET STEEL POST AT CALCULATED INTERSECTION POINT. FROM WHICH: 1) A 5/8" DIA. X 3/8" LONG ALUMINUM ROD WITH 1/2" DIA. ALUMINUM CAP MKD. LS 42669 2015 SET FLUSH WITH THE GROUND WITH A PLASTIC CASED MAGNET BURIED ALONGSIDE BEARS S 00°42'00" W, 11.22 FT.

M5 - PROPERTY CORNER SET 5/8" DIA. X 3/8" LONG ALUMINUM ROD WITH 1/2" DIA. ALUMINUM CAP MKD. LS 42669 2015 FLUSH WITH THE GROUND WITH A PLASTIC CASED MAGNET BURIED ALONGSIDE. SET STEEL POSTS SOUTH, 1.3 FT. AND EAST, 1.7 FT.

SURVEY HISTORY:
1877 - WILLIAM JAMESON, U.S. DEPUTY SURVEYOR, UNDER GLO CONTRACT, SURVEYED THE TOWNSHIP BOUNDARIES, SUBDIVISIONS AND MEANDERS.
1877 - JOHN E. LEONARD OF RADER AND LEONARD AND ASSOCIATES RECOVERED AND SET MONUMENTS FOR SECTIONS 22, 23, 24, 25, 26 AND 27, (AFN 888424).
1984 - JOHN ABERNETHY OF SKAGIT SURVEYORS AND ENGINEERS SUBDIVIDED A PORTION OF SECTION 22, SET AND RECOVERED MONUMENTS. (AFN 846501001).
2001 - JOHN E. SEARAU OF SEARAU ENGINEERING AND SURVEYORS SURVEYED A PORTION OF SECTION 27, SET AND RECOVERED MONUMENTS. (AFN 20011220119).
2010 - JOHN ABERNETHY OF SKAGIT SURVEYORS AND ENGINEERS SUBDIVIDED A PORTION OF SECTION 22, SET AND RECOVERED MONUMENTS. (AFN 20100827036).
2012 - KATHLEEN D. CASSOU OF PARAMETRIX ENGINEERING, PLANNING, ENVIRONMENTAL SCIENCES AND LAND SURVEYING, SURVEYED PORTIONS OF SECTIONS 22 AND 27, SET AND RECOVERED MONUMENTS, UNDER CONTRACT FOR THE U.S.D.A. FOREST SERVICE. (AFN 201204130083).

SURVEY FOR U.S.D.A. FOREST SERVICE
MT. BAKER-SNOQUALMIE NATIONAL FOREST
RECORD OF SURVEY OF
A PORTION OF
THE NE1/4 OF THE SE1/4 OF SECTION 22,
T. 35 N., R. 05 E., W.M.
SKAGIT COUNTY, WA

Accepted on behalf of the Mt. Baker-Snoqualmie National Forest
FOREST SUPERVISOR *[Signature]*
SURVEYED BY R.J.C., A.M.H. DATE 8/2015, 11/2015 SCALE 1 INCH = 200 FEET
DRAWN BY R.J.C. DATE 12/2015 SHEET 1 OF 1
CHECKED BY L.D.F. DATE 12/2015 PROJECT NO. 09-05

SURVEYOR'S CERTIFICATE
This map correctly represents a survey made by me or under my direction in conformance with the requirements of the Survey Recording Act at the request of U.S.D.A. Forest Service, Mt. Baker-Snoqualmie National Forest.

Signed and Sealed *[Signature]* 12/19/2015
Rebecca J. Cate, Land Surveyor
Washington State Land Surveyor No. 42669

FILED FOR RECORD THIS 22 DAY OF December 2015
AT 10:31 A.M. IN BOOK OF SURVEYS AT PAGE
AT THE REQUEST OF: REBECCA J. CATE, LAND SURVEYOR
COUNTY AUDITOR *[Signature]*
AUDITOR'S FILE NUMBER 201512220065