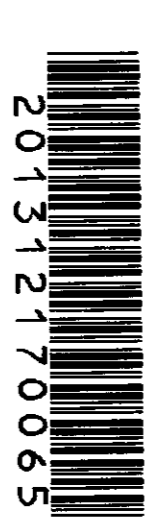
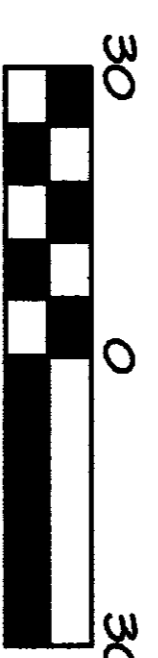


NW/4	NE/4
SW/4	SE/4
26	

SECTION 26, TWP 33 N., RGE 06 E., 11M.



201312170065 \$138.00
Skagit County Auditor
12/17/2013 Page 1 of 1 3:14PM



Scale 1" = 30'

LEGEND

- SET 5/8" X 24" REBAR WITH CAP STAMPED "L 5 28067" (MAY 2013)
- RECOVERED 1" PINCHED IRON PIPE (MAY 2013)

LEGAL DESCRIPTION

TAX PARCEL NUMBER(S): P66703, 3438-003-050-0004

LOT 41 AND 50, BLOCK 3, LAKE CAVANAUGH SUBDIVISION, DIVISION NO. 2, ACCORDING TO THE PLAT THEREOF RECORDED IN VOLUME 5 OF PLATS, PAGES 44 THROUGH 54, INCLUSIVE, RECORDS OF SKAGIT COUNTY, WASHINGTON, EXCEPT THE WEST 10 FEET OF SAID LOT 50.

SITUATE IN THE COUNTY OF SKAGIT, STATE OF WASHINGTON.

(LEGAL DESCRIPTION PER STATUTORY WARRANTY DEED A.F.N. 201304040060)

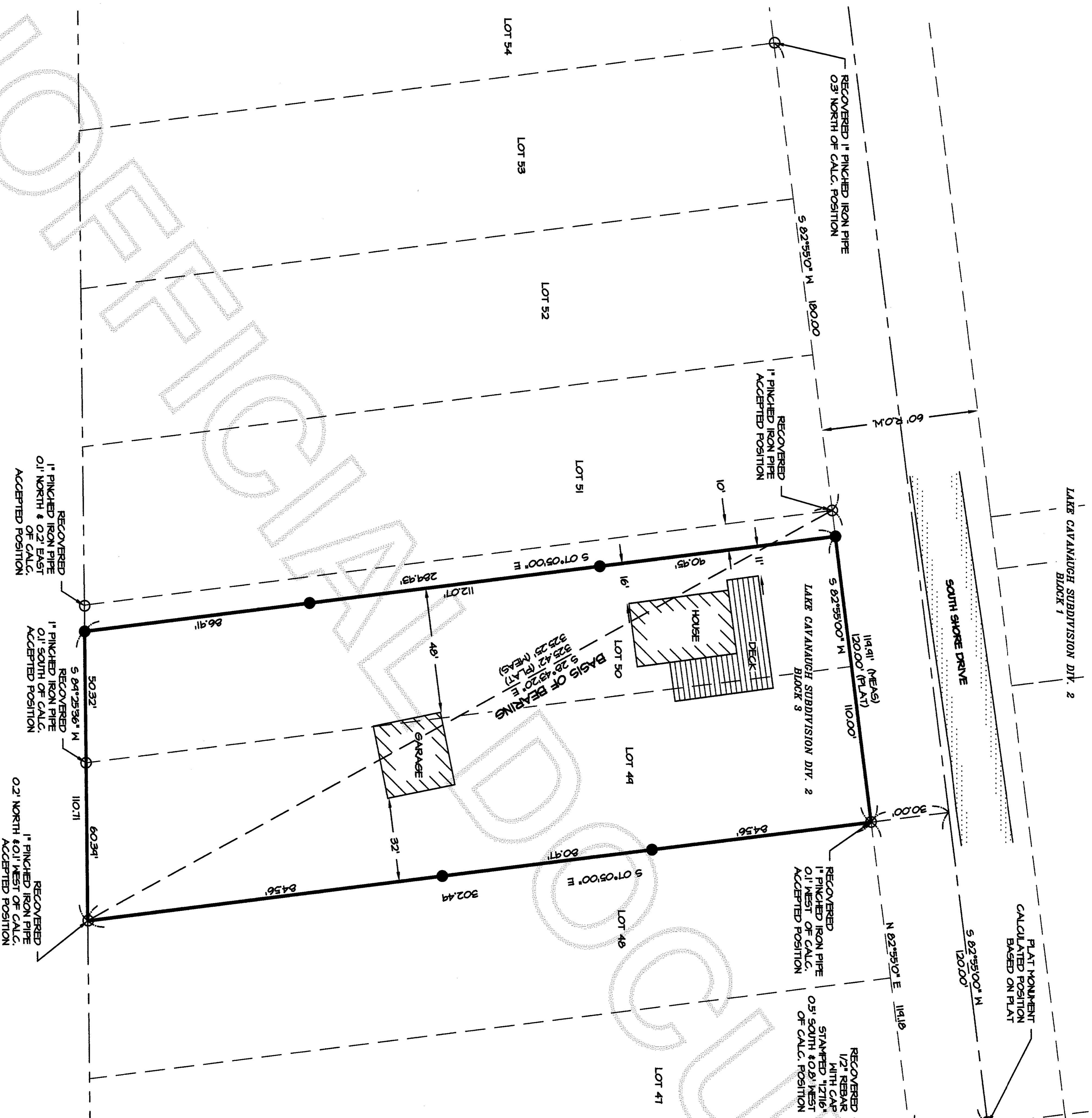
RESEARCH

LAKE CAVANAUGH SUBDIVISION DIV. NO. 2
RECORD OF SURVEY
VOL. 5 OF PLATS, PAGES 44-54
A.F.N. 200610060093
RECORD OF SURVEY
A.F.N. 4906010024

FIELD PROCEDURES AND INSTRUMENTATION

THIS LAND BOUNDARY SURVEY INCLUDED A COMBINATION OF TOTAL STATION POSITIONING SYSTEM (TSP) AND GLOBAL POSITIONING SYSTEM (GPS), BASED ON MANUFACTURERS SPECIFICATIONS. THE TSP STANDARD LINEAR ACCURACY IS 2MM+2 PPM AND TSP STANDARD ANGULAR ACCURACY IS 3 SECONDS. BASED ON MANUFACTURERS SPECIFICATIONS THE STATIC SURVEY ACCURACY OF THE GPS SYSTEM HAS A HORIZONTAL ACCURACY OF 5MM+(PPM*BASELINE LENGTH) AND AN AZIMUTH ACCURACY OF 1 ARC SECOND + 5/BASELINE LENGTH IN KM).

PROCEDURES USED TO ACCOMPLISH THIS SURVEY INCLUDED A COMBINATION OF RADIAL MEASUREMENTS, OPEN TRAVERSE AND CLOSED TRAVERSE METHODS.



SURVEYOR'S CERTIFICATE

THIS MAP CORRECTLY REPRESENTS A SURVEY MADE BY ME OR UNDER MY DIRECTION IN CONFORMANCE WITH THE REQUIREMENTS OF THE SURVEY RECORDING ACT AT THE REQUEST OF PHILIP SOUTH IN MAY, 2013.

THOMAS E. BARRY, P.L.S.
REGISTERED PROFESSIONAL LAND SURVEYOR
CERTIFICATE NO. 28067

AUDITOR'S CERTIFICATE

FILED FOR RECORD AT THE REQUEST OF THOMAS E. BARRY, THIS DAY OF DECEMBER, 2013, AT THE MINUTES PAST 2 P.M., AND RECORDED IN VOLUME 5 OF PLATS, PAGES 44-54, RECORDS OF SKAGIT COUNTY, WASHINGTON.

BY: [Signature]
DEPUTY COUNTY AUDITOR

METTRON

and ASSOCIATES INC.
LAND SURVEYS, MAPS, AND LAND USE PLANNING
307 N. OLYMPIC, SUITE 205
ARLINGTON, WASHINGTON 98223
(360) 435-3777 FAX (360) 435-4822
Copyright reserved 2013 © Mettron and Associates, Inc.

DATE: MAY 2013 BY: C.J.T. SCALE: 1" = 30'
PROJECT NO. 13023

RECORD OF SURVEY

FOR
PHILIP J. SOUTH

LOTS 41 AND 50 BLOCK 3,
LAKE CAVANAUGH SUBDIVISION NO. 2,
A PORTION OF THE NW 1/4 OF SW 1/4,
SECTION 26, TOWNSHIP 33 NORTH, RANGE 06 EAST, 11M.,
SKAGIT COUNTY, STATE OF WASHINGTON