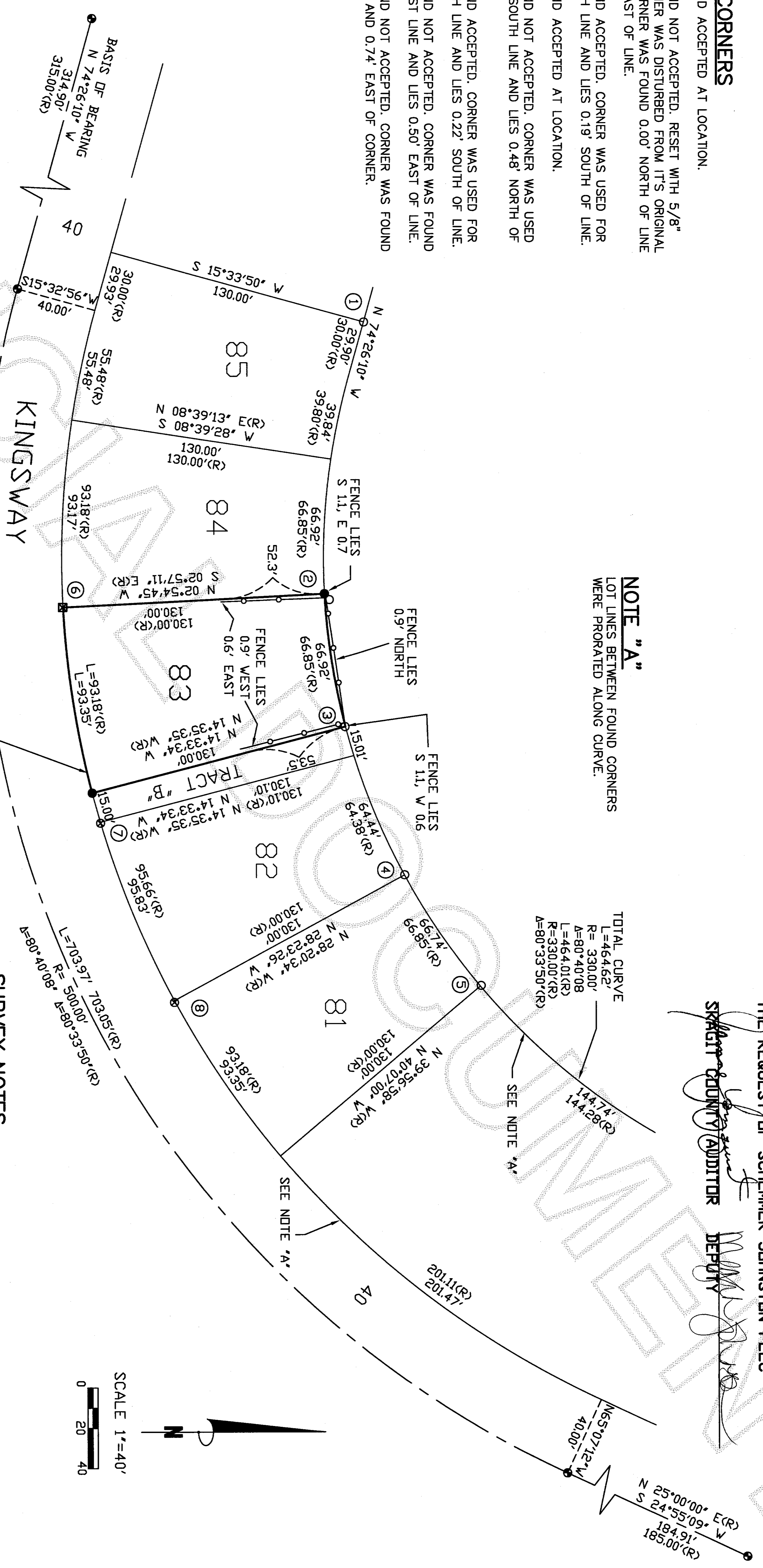


RECORD OF SURVEY SECTION 27, T 35 N., R 01 E., W.M. SKAGIT COUNTY WASHINGTON

FOUND CORNERS

- 1) FOUND AND ACCEPTED AT LOCATION.
- 2) FOUND AND NOT ACCEPTED. RESET WITH 5/8" REBAR. CORNER WAS DISTURBED FROM IT'S ORIGINAL POSITION. CORNER WAS FOUND 0.00' NORTH OF LINE AND 0.42' EAST OF LINE.
- 3) FOUND AND ACCEPTED. CORNER WAS USED FOR NORTH/SOUTH LINE AND LIES 0.19' SOUTH OF LINE.
- 4) FOUND AND ACCEPTED AT LOCATION.
- 5) FOUND AND NOT ACCEPTED. CORNER WAS USED FOR NORTH/SOUTH LINE AND LIES 0.48' NORTH OF LINE.
- 6) FOUND AND ACCEPTED. CORNER WAS USED FOR NORTH/SOUTH LINE AND LIES 0.22' SOUTH OF LINE.
- 7) FOUND AND NOT ACCEPTED. CORNER WAS FOUND ON EAST/WEST LINE AND LIES 0.50' EAST OF LINE.
- 8) FOUND AND NOT ACCEPTED. CORNER WAS FOUND 0.43' SOUTH AND 0.74' EAST OF CORNER.

NOTE "A"
LOT LINES BETWEEN FOUND CORNERS WERE PRORATED ALONG CURVE.



LEGEND

- FOUND 4"x4" CONC. MON. W/ TACK IN CASE.
- FOUND 1" IRON PIPE
- ⊠ FOUND 5/8" REBAR W/CAP *JUV 9636*
- ⊠ FOUND 5/8" REBAR W/CAP *NEWMAN 4998*
- SET 5/8" REBAR AND CAP *VISSER LS 34146*
- (R) RECORD
- ① CORNER NOTES (TYP)

LEGAL DESCRIPTION

LOT 83, SKYLINE NO. 4, ACCORDING TO THE PLAT THEREOF, RECORDED IN VOLUME 9 OF PLATS, PAGES 61 AND 62, RECORDS OF SKAGIT COUNTY, WASHINGTON.
(PER AUDITORS FILE #200210250193)

SURVEY NOTES

FIELD MEASUREMENTS USED TO PREPARE THIS SURVEY WERE MADE IN AUGUST, 2011.
BASIS OF BEARING:
BETWEEN FOUND PC & PT CONCRETE MONUMENTS IN CENTERLINE OF KINGSWAY.
BEARING N 74°26'10" W (PER PLAT OF SKYLINE #4)
THIS SURVEY WAS PERFORMED USING A LEICA TCRA1103 ELECTRONIC TOTAL STATION.
DIMENSIONS SHOWN ARE MEASURED EXCEPT THOSE DENOTED (R), WHICH ARE RECORD.
MEASURED DIMENSIONS MAY BE UNADJUSTED FIELD MEASUREMENTS, ADJUSTED FIELD MEASUREMENTS, OR DIMENSIONS CALCULATED.
ALL LINES OF OCCUPATION HAVE BEEN NOTED ON THIS SURVEY. NO ATTEMPT HAS BEEN MADE TO RESOLVE THESE LINES OF OCCUPATION.
ALL EASEMENTS AS SHOWN ON PLAT OF SKYLINE #4 HAVE BEEN SHOWN. THERE IS NO GUARENTEE TO UNRECORDED EASEMENTS OR THOSE EASEMENTS NOT SHOWN ON SAID PLAT.
PRECISION EXCEEDS STATE STANDARD WAC 332-130-090

AUDITORS CERTIFICATE FILED FOR RECORD AT
THE REQUEST OF SCHEMER JOHNSTON PLLC
SKAGIT COUNTY AUDITOR
DEPUTY

JOB NO.
11-040

SHEET

1 OF 1

RECORD OF SURVEY

FOR THOMAS H KINGMAN
4512 KINGSWAY
ANACORTES, WA. 98221

SCHEMER JOHNSTON PLLC
CIVIL STRUCTURAL PLANNING SURVEYING
3014 COMMERCIAL AVE., SUITE D, ANACORTES, WA. 98221



SURVEYOR'S CERTIFICATE
I HEREBY CERTIFY THAT THIS PLAT CORRECTLY REPRESENTS A SURVEY MADE BY ME OR UNDER MY DIRECT SUPERVISION AND IS IN CONFORMANCE WITH THE SURVEY RECORDING ACT.
URBAN P. VISSER CERT. #34146
DATE 10.24.11

DRAWN	JTS
CHECKED	UNV
DATE	BY
DATE	APP
DATE	REVISIONS

CAD FILE: 11-040
PLOT DATE: 9-29-2011