

# AMENDED RECORD OF SURVEY

SITUATE IN A PORTION OF SOUTHWEST QUARTER OF THE NORTHWEST QUARTER OF SECTION 24, TOWNSHIP 35 NORTH, RANGE 1 EAST, W.M., CITY OF ANACORTES, SKAGIT COUNTY, WASHINGTON

200909170012  
Skagit County Auditor  
8/17/2008 Page 1 of 4 4:10:09AM

## MONUMENT HISTORY & DESCRIPTIONS

SECTION CORNER 19, 24, 25, & 30 TOWNSHIP 35 NORTH, RANGE 1 EAST

NOVEMBER 4, 1871, GENERAL LAND OFFICE DEPUTY SURVEYOR JOHN A. CORNELIUS, UNDER CONTRACT NUMBER 125, VOLUME 23, PAGE 78, SET A POST.

JANUARY 21, 1890 "MAP OF THE CITY OF ANACORTES SKAGIT COUNTY WASHINGTON", VOLUME 2, PAGE 4, PLAT REFERS TO SECTION CORNER, NO MONUMENT DESCRIPTION.

JUNE 27, 1905, "HENSLEY'S FIRST ADDITION TO THE CITY OF ANACORTES", VOLUME 3, PAGE 46, I.P., NO MONUMENT DESCRIPTION.

MAY 23, 1972, "ANACORTES INDUSTRIAL PARK ADDITION", AF# 768619, REFERS TO SECTION CORNER, NO MONUMENT DESCRIPTION.

JANUARY 20, 1976, "THE HIGHLANDS FIRST ADDITION", AF# 828956, I.P., FOUND.

MAY 22, 1987, AF# 8705220039, FOUND 3/8TH" IRON PIPE.

OCTOBER 22, 1992, AF# 9210220058, 1/2" IRON PIPE.

FEBRUARY 1, 1993, AF# 9302010093, FOUND 1/2" IRON PIPE.

JANUARY 1997, WASHINGTON STATE DEPARTMENT OF TRANSPORTATION "SR 20 SPIRUE COMMERCIAL AVE. TO FERRY TERR", SHEETS 1, 20, 21, 22, 40, 41, AND 42, SHOWS A SECTION CORNER SYMBOL, NO MONUMENT DESCRIPTION.

JANUARY 7, 2000, AF# 200001070087, FOUND 3/8TH STEEL SHANK, WITH TAP.

OCTOBER 3, 2001, AF# 200110030106, FOUND 1/2" DIAMETER IRON PIN IN NORTHERLY LANE OF 29TH STREET, FOUND SANDSTONE MONUMENT 1.6 FEET BELOW SURFACE WITH LEAD PLUG AND PIN, SET CONCRETE MONUMENT ON TOP OF POSITION TIED FOR SANDSTONE MONUMENT AND SET IN MONUMENT CASE. ALSO IN LAND CORNER RECORD AF# 20000320147, PART OF THE SAME SURVEY.

SEPTEMBER 26, 2002, AF# 200209260018, FOUND CONCRETE MONUMENT BRASS CAP IN CASE.

JANUARY 2, 2003, AF# 200301020109, BRASS TABLET IN CONCRETE MARKED AS SECTION CORNER.

JUNE 27, 2003, AF# 200306270205, FOUND MONUMENT AND CASE.

SEPTEMBER 11, 2003, AF# 200309110013, MONUMENT IN CASE FOUND WITH 2" DIAMETER BRASS DISC IN 4"x4" CONCRETE MONUMENT STAMPED WITH "X".

MAY 1, 2003, AF# 200305010015, CASSED CONCRETE MONUMENT, BRASS DISK.

SEPTEMBER 26, 2005, AF# 200509260191, MONUMENT CASE AND COVER.

MAY 31, 2006, AF# 200605310184, FOUND BRASS CAP IN CASE.

SEPTEMBER 9, 2006, AF# 200609090128, 4"x4" CONCRETE MONUMENTS WITH 2" BRASS DISC.

SEPTEMBER 12, 2006, AF# 200609120004, FOUND 1/2" INCH STEEL PIN WITH CENTER TAP SET IN CASE. (RECORD DATA FROM A PREVIOUS SURVEY)

FEBRUARY 2, 2007, AF# 200702020058, 4"x4" CONCRETE MONUMENTS WITH 2" BRASS DISC.

MARCH 12, 2008, AF# 200803120069, FOUND 1/2" INCH STEEL PIN WITH CENTER TAP SET IN CASE. (RECORD DATA FROM A PREVIOUS SURVEY)

APRIL 2009 PACIFIC SURVEYING AND ENGINEERING FOUND 4"x4" CONCRETE MONUMENT WITH 2" DIAMETER BRASS DISC, PLS 28071, (SEE DETAIL ON SHEET 3 OF 4) IN A MONUMENT CASE, 0.1 BELOW GRADE. THIS POSITION HAS BEEN ACCEPTED AND USED BY ALL SURVEYS OF RECORD. ACCEPTED AS SECTION CORNER.

## AUDITOR'S CERTIFICATE

Filed for record this day of , 20 at  
in book of surveys at page at the request of  
PACIFIC SURVEYING AND ENGINEERING SERVICES INC.

*Stangquist bnf Jeanne Paula*  
County Auditor

DRAWN BY: JUD

CHECKED BY: PKB

F.B.# 429 & 429.01 DATE: 09/14/09

JOB NO. 2009050

SHEET NO. 1 OF 4

## AMENDED

## RECORD OF SURVEY

P.O. BOX 217  
ANACORTES, WA 98221

## SURVEYOR'S CERTIFICATE

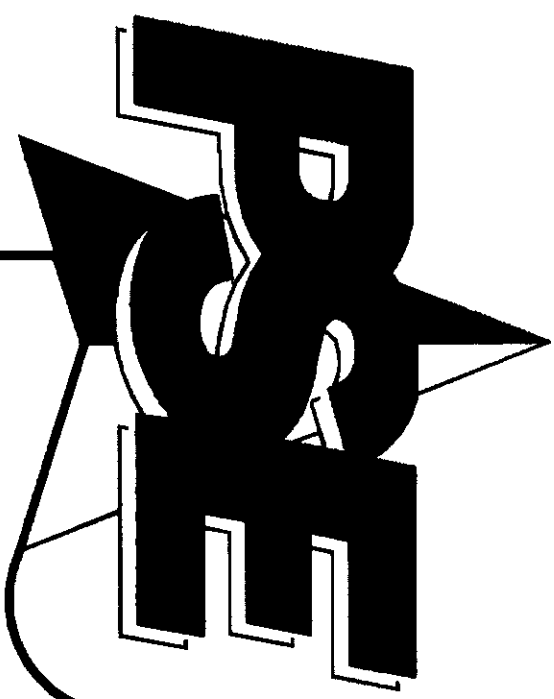
This map correctly represents a survey made by me or under my direction in conformance with the requirements of the Survey Recording Act at the request of Mr. Ted Gage, AICP, Planning Director - Samish Indian Tribe in April 2009.

Certificate No.: 35147

DWG. NO. 2009050, SWX, ROS - Site.dwg







# AMENDED RECORD OF SURVEY

SITUATE IN A PORTION OF SOUTHWEST QUARTER OF THE NORTHWEST QUARTER OF SECTION 24, TOWNSHIP 35 NORTH,  
RANGE 1 EAST, W.M., CITY OF ANACORTES, SKAGIT COUNTY, WASHINGTON

200909170012  
Skagit County Auditor  
9/17/2009 Page 2 of 4 4:10:03AM

## MONUMENT HISTORY & DESCRIPTIONS CONTINUED FROM SHEET 1

### "D" AVENUE & 16TH STREET

JANUARY 21, 1890, - AF# 16389 (VOL. 2 PAGES 4-7) - "MAP OF THE CITY OF ANACORTES, SKAGIT COUNTY WASHINGTON", - PLAT CREATES THE CITY BLOCKS WHICH THIS IS A PART OF. "MONUMENTS ARE PLACED AT THE INTERSECTION OF STREETS AND AVENUE CENTERLINES AS SHOWN BY PLAT" - NO MONUMENT SHOWN

NOVEMBER 7, 2000, AF# 200011070001, "FOUND INTERSECTION MONUMENT IN CASE"

MAY 1, 2009 PACIFIC SURVEYING AND ENGINEERING FOUND 2" BRASS DISC IN 4"x4" CONCRETE STAMPED WITH PL# 7597 AND PUNCH MARK IN CASE 0.4' BELOW GRADE. THIS POSITION HAS BEEN ACCEPTED AND USED BY ALL SURVEYS OF RECORD. ACCEPTED AS STREET INTERSECTION MONUMENT.

### "B" AVENUE & 17TH STREET

JANUARY 21, 1890, - AF# 16389 (VOL. 2 PAGES 4-7) - "MAP OF THE CITY OF ANACORTES, SKAGIT COUNTY WASHINGTON", - PLAT CREATES THE CITY BLOCKS WHICH THIS IS A PART OF. "MONUMENTS ARE PLACED AT THE INTERSECTION OF STREETS AND AVENUE CENTERLINES AS SHOWN BY PLAT" - MONUMENT SHOWN

SEPTEMBER 9, 1998, AF#9809090092 - FOUND NAIL HELD FOR STREET INTERSECTION OF "B" & 17TH. MEASURED DISTANCE TO FOUND MONUMENT AT INTERSECTION OF "D" & 17TH IS 759.74 FEET AS SHOWN THEREON. MONUMENT AS FOUND BY PACIFIC SURVEYING AND ENGINEERING AT INTERSECTION OF "B" & 17TH (SEE NOTE BELOW) MEASURES 760.00 FEET TO SAME FOUND MONUMENT AT "D" & 17TH. RECORD POSITION OF NAIL PER AF# 9809090092 NOT HELD AS STREET INTERSECTION.

MAY 1, 2009 PACIFIC SURVEYING AND ENGINEERING FOUND 2" BRASS DISC IN 4"x4" CONCRETE STAMPED WITH PL# 9569 AND PUNCH MARK IN CASE 0.4' BELOW GRADE. THIS POSITION HAS BEEN ACCEPTED AND USED BY THIS SURVEY AND ALTHOUGH NOT LIKELY TO BE THE ORIGINAL PLAT MONUMENT, THE MEASURED DISTANCE TO THE INTERSECTION MONUMENT AT "D" & 17TH MATCHES THAT OF THE ORIGINAL PLAT DISTANCE (760 FEET).

## PROPERTY LEGAL DESCRIPTIONS

SUBJECT PROPERTY - TAX PARCEL# P56258 & P106712  
PER FIRST AMERICAN TITLE INSURANCE COMPANY - GUARANTEE NO. H-1006120-0029766

THE EAST 1/2 OF LOT 13 AND ALL OF LOTS 14-20, INCLUSIVE BLOCK 208, "MAP OF THE CITY OF ANACORTES" AS PER PLAT RECORDED IN VOLUME 2 OF PLATS, PAGES 4, 5, 6 AND 7, RECORDS OF SKAGIT COUNTY, WASHINGTON

SEE STATUTORY WARRANTY DEED - AF# 199911120101  
SEE STATUTORY WARRANTY DEED - AF# 199911120117

### ADJOINING PROPERTY TO WEST - TAX PARCEL# P105935

LOTS 11 & 12 AND THE WEST 1/2 OF LOT 13, BLOCK 208, "MAP OF THE CITY OF ANACORTES", ACCORDING TO THE PLAT THEREOF, RECORDED IN VOLUME 2 OF PLATS, PAGES 4 THROUGH 7, RECORDS OF SKAGIT COUNTY, WASHINGTON

SEE STATUTORY WARRANTY DEED - AF# 9805070043

### ADJACENT PROPERTY TO NORTH - TAX PARCEL# P56256

LOTS 1 THROUGH 5, BLOCK 208, "MAP OF THE CITY OF ANACORTES", ACCORDING TO THE PLAT THEREOF, RECORDED IN VOLUME 1 OF PLATS, PAGE 4, RECORDS OF SKAGIT COUNTY, WASHINGTON

SEE STATUTORY WARRANTY DEED - AF# 200308260061

NOTE: APPARENT SURVEYOR'S ERROR IN LEGAL, SHOULD READ "VOLUME 2 OF PLATS" PAGES 4 THROUGH 7.

### ADJACENT PROPERTY TO NORTH - TAX PARCEL# P104252

LOTS 6 & 7 AND THE EAST HALF OF LOT 8, BLOCK 208, "MAP OF THE CITY OF ANACORTES", ACCORDING TO THE PLAT THEREOF, RECORDED IN VOLUME 2 OF PLATS, PAGES 4 THROUGH 7, RECORDS OF SKAGIT COUNTY, WASHINGTON

SITUATED IN SKAGIT COUNTY WASHINGTON

SEE STATUTORY WARRANTY DEED - AF# 200308020247

## ADDITIONAL INFORMATION FOR SUBJECT PROPERTY

- 1) NO OBSERVABLE EVIDENCE OF EARTH MOVING WORK, BUILDING CONSTRUCTION OR BUILDING ADDITIONS AT THE TIME THIS SURVEY WAS PERFORMED (MAY 2009)
- 2) RESEARCH AND INFORMATION AVAILABLE FROM CONTROLLING JURISDICTION INDICATES NO COMPLETED AND/OR PROPOSED CHANGES IN STREET RIGHT-OF-WAY LINES AS OF THE DATE OF THIS SURVEY (MAY 2009)
- 3) NO OBSERVABLE EVIDENCE OF SITE USED AS SOLID WASTE DUMP, SWAMP OR SANITARY LANDFILL AS OF THE DATE OF THIS SURVEY (MAY 2009)

## SURVEY NOTES

- 1) DATA FOR THIS SURVEY WAS GATHERED BY FIELD TRAVERSE UTILIZING ELECTRONIC DATA COLLECTION IN MAY 2009.
- 2) EQUIPMENT USED: THEODOLITE 00'01.5" EDM:  $\pm 1$  PPM,  $\pm 2$  MM
- 3) MONUMENTS STAKED ON OR ABOUT JUNE 2009.
- 4) HORIZONTAL DATUM: ASSUMED LOCAL.
- 5) BASIS OF BEARINGS: ASTRONOMIC NORTH BY HOUR ANGLE METHOD
- 6) PURPOSE OF SURVEY: TO MONUMENT THE CORNERS OF PARCEL NOS. P56258 & P106717 ALL IN SECTION 24, TOWNSHIP 35 NORTH, RANGE 1 EAST, W.M., CITY OF ANACORTES, SKAGIT COUNTY, WASHINGTON AND DEPICT ANY OCCUPATIONAL INDICATORS, AS SHOWN HEREON
- 6) OCCUPATIONAL INDICATOR NOTE  
IN ACCORDANCE WITH THE REVISED CODE OF WASHINGTON: 58.09 AND WASHINGTON ADMINISTRATIVE CODE CHAPTER 332-130, THIS RECORD OF SURVEY DEPICTS OCCUPATIONAL INDICATORS, SUCH AS FENCES. THESE INDICATORS REPRESENT A POTENTIAL FOR CLAIMS OF UNWRITTEN TITLE. THIS SURVEY DOES NOT RESOLVE ANY OF THE LEGAL OWNERSHIP ISSUES THAT MAY ARISE FROM THESE UNWRITTEN TITLE CLAIMS.



SURVEY MONUMENT SET AT PROPERTY CORNERS  
SET 2" DISC/REBAR - (JUNE 2009)  
STAMPED AS SHOWN  
(SEE SHEET 4)

## PURPOSE OF AMENDMENT:

THIS AMENDED RECORD OF SURVEY IS FILED TO CORRECT A SURVEYOR'S ERROR ON SHEET 3 OF 4. THE BEARING TO U.S. COAST AND GEODETIC SURVEY MONUMENT S329 HAS BEEN CORRECTED TO READ SOUTHEAST INSTEAD OF SOUTHWEST. THIS RECORD OF SURVEY SUPERCEDES THAT PREVIOUS RECORD OF SURVEY FILED UNDER AUDITOR'S FILE NO. 200908060001.

PACIFIC SURVEY & ENGINEERING INC EMAIL: pse@psurvey.com  
1812 CORNWALL AVE, BELLINGHAM, WA 98225 PHONE:671.7387 FAX:671.4685 www.psurvey.com

## AMENDED RECORD OF SURVEY

SAMISH INDIAN TRIBE  
P.O. BOX 217  
ANACORTES, WA 98221

DRAWN BY: JUD

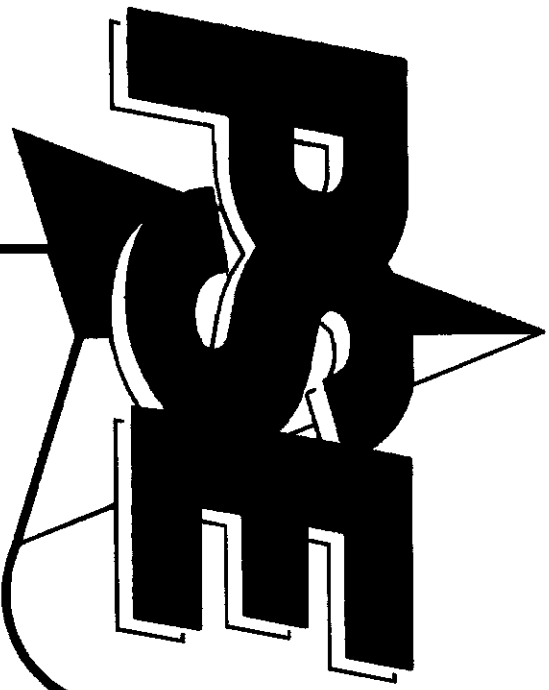
CHECKED BY: PKB

F.B.# 429 & 429.01 DATE: 09/14/09 JOB NO. 2009050

SHEET NO. 2 OF 4

DWG. NO. 2009050, SIX, ROS-Site2.dwg





**PACIFIC SURVEY & ENGINEERING INC** EMAIL: pse@psurvey.com  
1812 CORNWALL AVE, BELLINGHAM, WA 98225 PHONE: 671.7387 FAX: 671.4685 www.psurvey.com

# AMENDED RECORD OF SURVEY

SITUATE IN A PORTION OF SOUTHWEST QUARTER OF THE NORTHWEST QUARTER OF SECTION 24, TOWNSHIP 35 NORTH,  
RANGE 1 EAST, W.M., CITY OF ANACORTES, SKAGIT COUNTY, WASHINGTON

200909170012  
Skagit County Auditor  
3 of 4  
9/17/2009 Page 4 10:03AM

## SURVEY LEGEND

● = EXISTING MONUMENT (SEE DESCRIPTION)

⊕ = EXISTING QUARTER SECTION CORNER

⊕ = EXISTING SECTION CORNER

②08 = BLOCK NUMBER

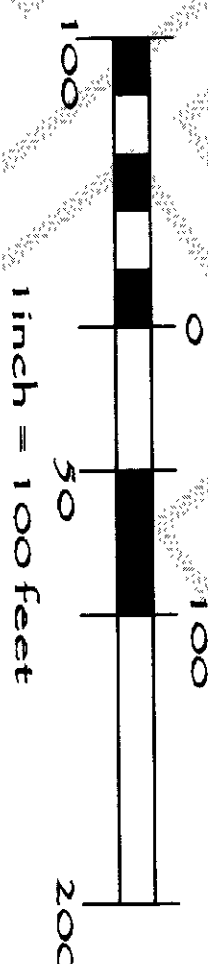
① = LOT NUMBER

( ) = DIMENSION PER PLAT MAP OF THE CITY OF ANACORTES SKAGIT COUNTY WASHINGTON AS RECORDED IN VOLUME 2 PAGES 4-7.

P56258 = TAX PARCEL NUMBER

BASIS OF BEARINGS  
"ASTRONOMIC NORTH"  
HOUR ANGLE METHOD

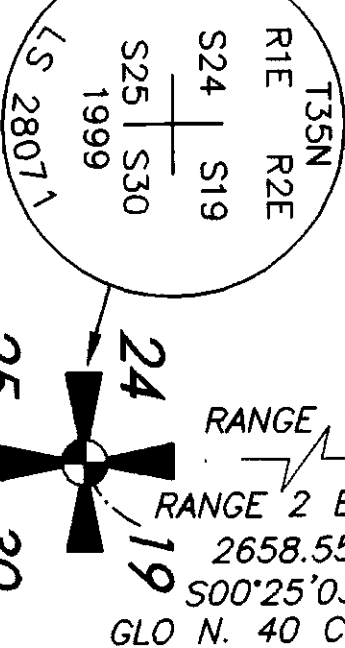
GRAPHIC SCALE  
(Use survey feet)



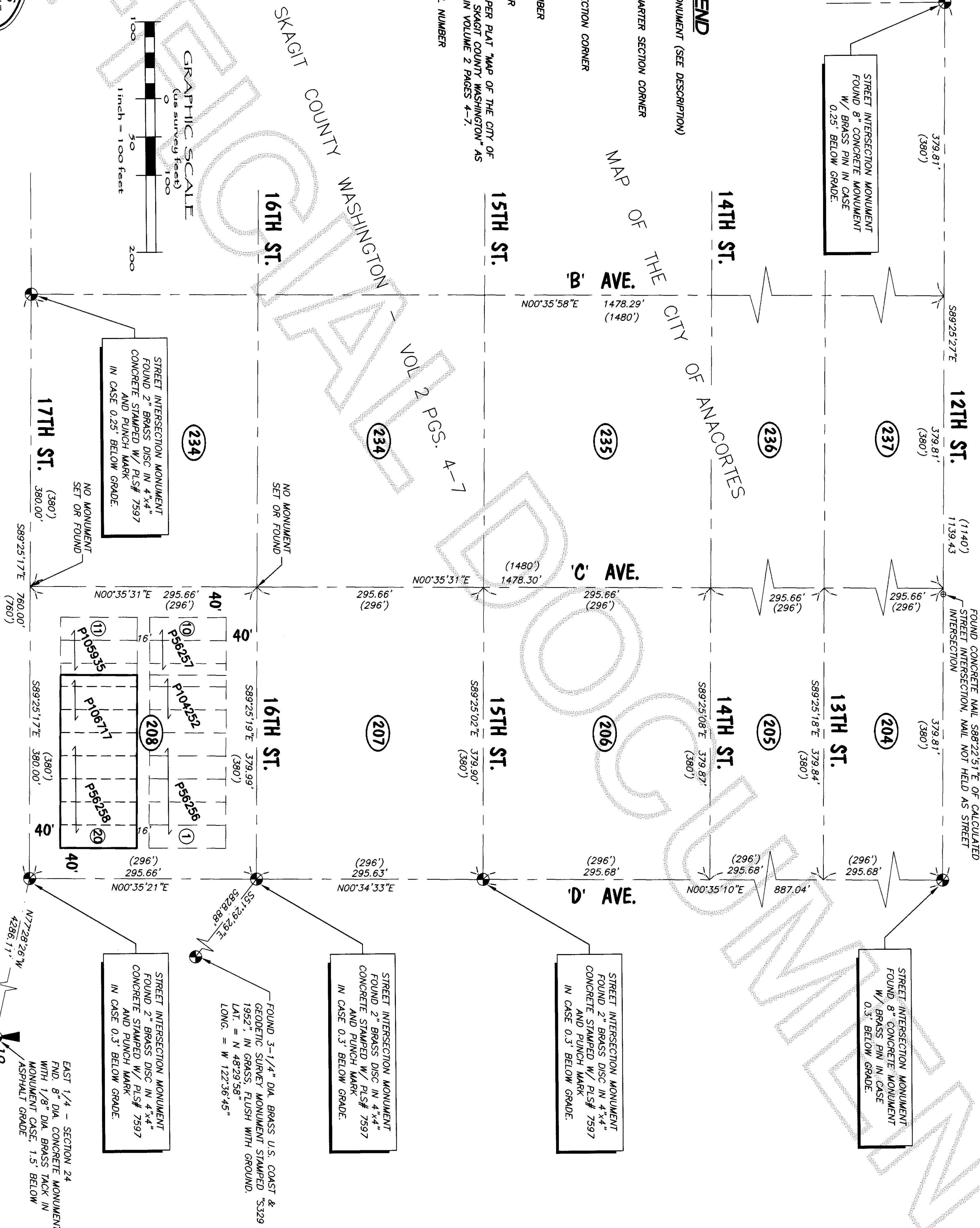
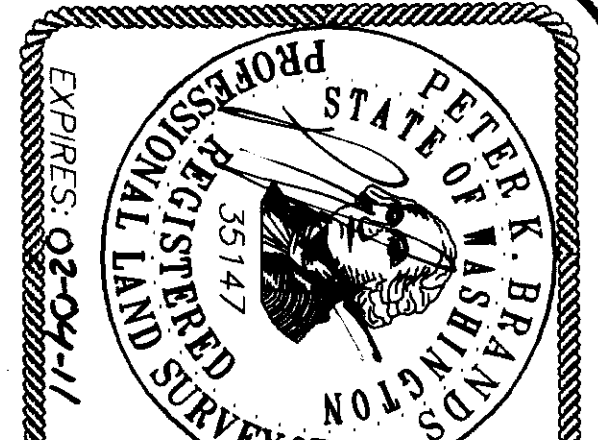
## AMENDED RECORD OF SURVEY

SAMISH INDIAN TRIBE  
P.O. BOX 217  
ANACORTES, WA 98221

SE 1/4 CORNER - SECTION 24  
FND. 4" SQUARE CONCRETE  
MONUMENT WITH 2 DIA. BRASS  
DISC IN MONUMENT CASE. 0.1'  
BELOW ASPHALT GRADE



EAST 1/4 - SECTION 24  
FND. 8" DIA. CONCRETE MONUMENT  
WITH 1/8" DIA. BRASS TACK IN  
MONUMENT CASE. 1.5' BELOW  
ASPHALT GRADE



DRAWN BY: JUD

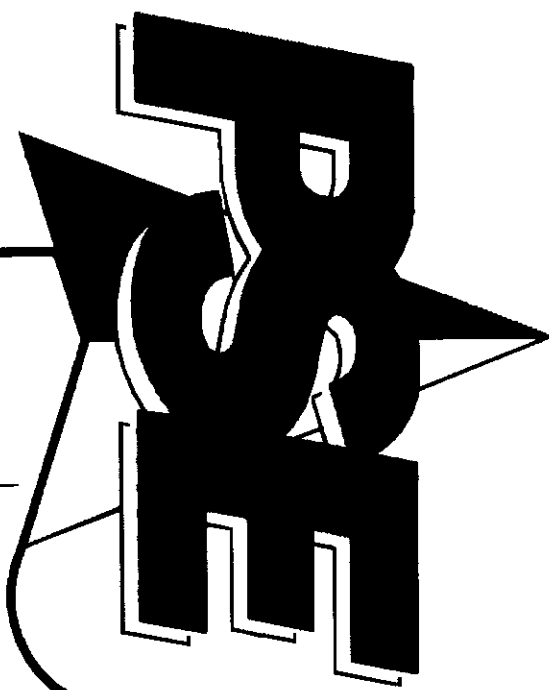
CHECKED BY: PKB

F.B.# 429 & 429.01 DATE: 09/14/09 JOB NO. 2009050

SHEET NO. 3 OF 4

DWG. NO. 2009050, s-v-x, RQS - Site2.dwg



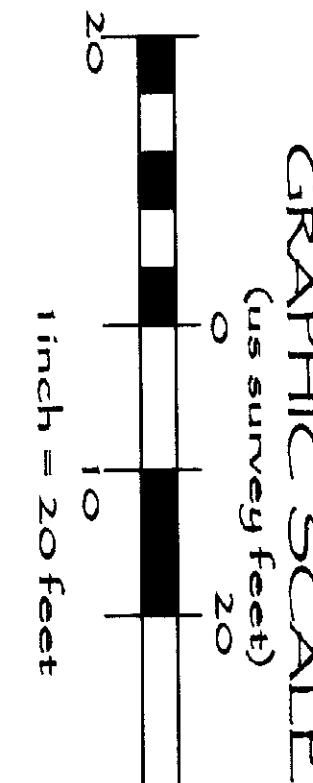


# AMENDED RECORD OF SURVEY

SITUATE IN A PORTION OF SOUTHWEST QUARTER OF THE NORTHWEST QUARTER OF SECTION 24, TOWNSHIP 35 NORTH,  
RANGE 1 EAST, W.M., CITY OF ANACORTES, SKAGIT COUNTY, WASHINGTON

200909170012  
Skagit County Auditor  
9/17/2009 Page 4 of 4 410:03AM

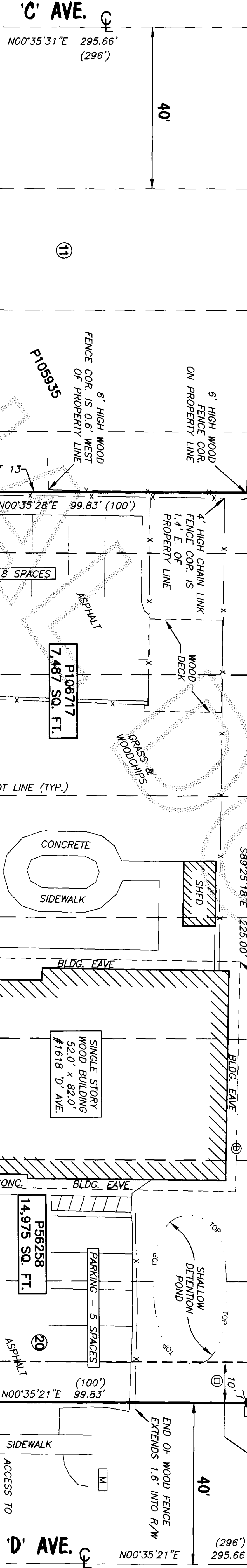
16TH ST. (380')  
S89°25'19"E 379.99'



MAP OF THE CITY OF ANACORTES  
SKAGIT COUNTY WASHINGTON

VOL 2 PGS. 4-7

BASIS OF BEARINGS  
"ASTRONOMIC NORTH"  
HOUR ANGLE METHOD



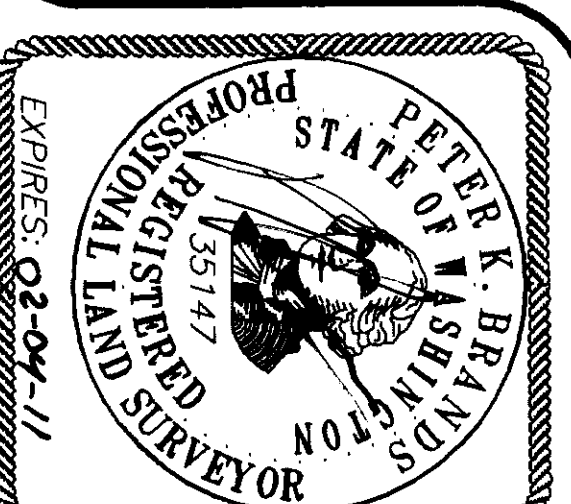
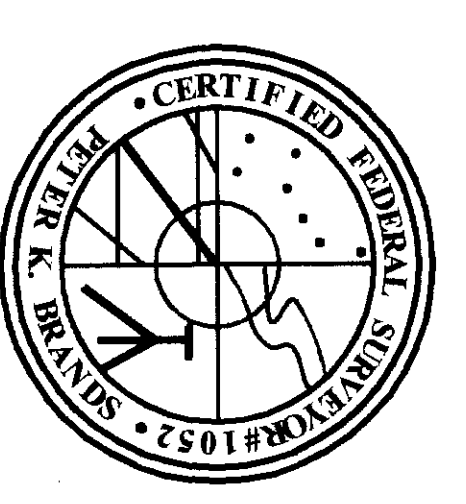
## SURVEY LEGEND

- = EXISTING MONUMENT (SEE DESCRIPTION)
- = SET REBAR/METAL DISC (SEE DETAIL ON SHEET 2)
- ⊙ = SET PK NAIL/FLASER PLS#35147
- ① = BLOCK NUMBER
- ② = LOT NUMBER
- P56258 = TAX PARCEL NUMBER
- ⌒ = STREET/AVENUE CENTERLINE
- GAT. = GATE IN FENCE
- ⊗ = EXISTING GAS METER
- ⊙ = EXISTING STREET LIGHT POLE
- ⊙ = EXISTING ELECTRIC HANDHOLD
- ⊙ = EXISTING WATER METER
- ⊙ = EXISTING FIRE HYDRANT
- ⊙ = EXISTING STORM DRAIN MANHOLE
- ⊙ = EXISTING STORM DRAIN CLEANOUT
- ⊙ = EXISTING MAILBOX
- ⊙ = EXISTING FIR TREE
- ( ) = DIMENSION PER PLAT "MAP OF THE CITY OF ANACORTES SKAGIT COUNTY WASHINGTON" AS RECORDED IN VOLUME 2 PAGES 4-7.

## AMENDED RECORD OF SURVEY

SAMISH INDIAN TRIBE  
P.O. BOX 217  
ANACORTES, WA 98221

- ① SET REBAR/DISC S72°04'W AND 0.12' FROM FOUND R/C PLS# 11941
- ② SET REBAR/DISC S81°24'W AND 0.16' FROM FOUND R/C PLS# 11941



DRAWN BY: JLD CHECKED BY: PKB F.B.# 429 & 429.01 DATE: 09/14/09 JOB NO. 2009050 SHEET NO. 4 OF 4 DWG. NO. 2009050-SVX-ROS-Site2.dwg