

RECORD OF SURVEY

200908060001
Skagit County Auditor
8/6/2009 Page 1 of 4 9:32AM

MONUMENT HISTORY & DESCRIPTIONS

SECTION CORNER 19, 24, 25, & 30 TOWNSHIP 35 NORTH, RANGE 1 EAST

NOVEMBER 4, 1871, GENERAL LAND OFFICE DEPUTY SURVEYOR JOHN A. CORNELIUS, UNDER CONTRACT NUMBER 125, VOLUME 23, PAGE 78, SET A POST.
JANUARY 21, 1890, "MAP OF THE CITY OF ANACORTES SKAGIT COUNTY WASHINGTON", VOLUME 2, PAGE 4, PLAT REFERS TO SECTION CORNER, NO MONUMENT DESCRIPTION.
JUNE 27, 1905, "HENSLEY'S FIRST ADDITION TO THE CITY OF ANACORTES", VOLUME 3, PAGE 46, I.P.
MAY 23, 1922, "ANACORTES INDUSTRIAL PARK ADDITION", AF# 768619, REFERS TO SECTION CORNER, NO MONUMENT DESCRIPTION.
JANUARY 20, 1976, "THE HIGHLANDS FIRST ADDITION", AF# 828956, I.P. FOUND.
MAY 22, 1987, AF# 8705220039, FOUND 3/8TH" IRON PIPE.
OCTOBER 22, 1992, AF# 9210220058, 1/2" IRON PIPE.
FEBRUARY 1, 1993, AF# 9302010093, FOUND 1/2" IRON PIPE.
JANUARY 1997, WASHINGTON STATE DEPARTMENT OF TRANSPORTATION "SR 20 SPUR COMMERCIAL AVE. TO FERRY TERM", SHEETS 1, 20, 21, 22, 40, 41, AND 42, SHOWS A SECTION CORNER SYMBOL, NO MONUMENT DESCRIPTION.
JANUARY 7, 2000, AF# 200001070087, FOUND 3/8TH STEEL SHANK, WITH TAP.
OCTOBER 3, 2001, AF# 200110030106, FOUND 1/2" DIAMETER IRON PIN IN NORTHERLY LANE OF 29TH STREET, FOUND SANDSTONE MONUMENT 1.6 FEET BELOW SURFACE WITH LEAD PLUG AND PIN, SET CONCRETE MONUMENT ON TOP OF POSITION TIED FOR SANDSTONE MONUMENT AND SET IN MONUMENT CASE. ALSO IN LAND CORNER RECORD AF# 200003270147, PART OF THE SAME SURVEY.
SEPTEMBER 26, 2002, AF# 200208260018, FOUND CONCRETE MONUMENT BRASS CAP IN CASE.
JANUARY 2, 2003, AF# 200301020109, BRASS TABLET IN CONCRETE MARKED AS SECTION CORNER.
JUNE 27, 2003, AF# 200306270205, FOUND MONUMENT AND CASE.
SEPTEMBER 11, 2003, AF# 200309110013, MONUMENT IN CASE FOUND WITH 2" DIAMETER BRASS DISC IN 4"x4" CONCRETE MONUMENT STAMPED WITH "X".
MAY 1, 2003, AF# 200305010015, Cased CONCRETE MONUMENT, BRASS DISK.
SEPTEMBER 26, 2005, AF# 200509260191, MONUMENT CASE AND COVER.
MAY 31, 2006, AF# 200605310184, FOUND BRASS CAP IN CASE.
SEPTEMBER 9, 2006, AF# 200609090128, 4"x4" CONCRETE MONUMENTS WITH 2" BRASS DISC.
SEPTEMBER 12, 2006, AF# 200609120004, FOUND 1/2" INCH STEEL PIN WITH CENTER TAP SET IN CASE. (RECORD DATA FROM A PREVIOUS SURVEY)
FEBRUARY 2, 2007, AF# 200702020058, 4"x4" CONCRETE MONUMENTS WITH 2" BRASS DISC.
MARCH 12, 2008, AF# 200803120068, FOUND 1/2" INCH STEEL PIN WITH CENTER TAP SET IN CASE. (RECORD DATA FROM A PREVIOUS SURVEY)
APRIL 2009 PACIFIC SURVEYING AND ENGINEERING FOUND 4"x4" CONCRETE MONUMENT WITH 2" DIAMETER BRASS DISC, PLUS 28071, (SEE DETAIL ON SHEET 3 OF 4) IN A MONUMENT CASE, 0.1 BELOW GRADE. THIS POSITION HAS BEEN ACCEPTED AND USED BY ALL SURVEYS OF RECORD. ACCEPTED AS SECTION CORNER.

QUARTER CORNER TO SECTIONS 19 & 24 TOWNSHIP 35 N. RANGE 1 EAST

NOVEMBER 4, 1871, GENERAL LAND OFFICE DEPUTY SURVEYOR JOHN A. CORNELIUS, UNDER CONTRACT NUMBER 125, VOLUME 23, PAGE 78, SET A POST.
OCTOBER 22, 1992, AF# 9210220058, RELOCATED POSITION PER SURVEY BY HAROLD RADER.
FEBRUARY 1, 1993, AF# 9302010093, MONUMENT IN CASE
JANUARY 7, 2000, AF# 200001070087, FOUND CONCRETE MONUMENT WITH STEEL SHANK.
MAY 1, 20003, AF#200305010015, Cased CONCRETE MONUMENT WITH BRASS PIN.
MAY 31, 2006, AF# 200605310184, FOUND CONCRETE MONUMENT WITH BRASS PIN IN CASE.
SEPTEMBER 9, 2006, AF# 200609090128, FOUND CONCRETE MONUMENT WITH TACK.
SEPTEMBER 12, 2006, AF# 200609120004, FOUND CONCRETE MONUMENT WITH STEEL SHANK SET IN CASE.
FEBRUARY 2, 2007, AF# 200702020058, FOUND CONCRETE MONUMENT WITH TACK.
MARCH 12, 2008, AF# 200803120069, FOUND CONCRETE MONUMENT WITH STEEL SHANK SET IN MONUMENT CASE
APRIL 2009 PACIFIC SURVEYING AND ENGINEERING FOUND 8" DIAMETER CONCRETE MONUMENT WITH 1/8" DIAMETER BRASS TACK IN MONUMENT CASE, 1.5" BELOW ASPHALT GRADE. THIS POSITION HAS BEEN ACCEPTED AND USED BY ALL SURVEYS OF RECORD. ACCEPTED AS QUARTER CORNER.
"A" AVENUE & 12TH STREET

JANUARY 21, 1890, - AF# 16389 (VOL. 2 PAGES 4-7) - "MAP OF THE CITY OF ANACORTES, SKAGIT COUNTY WASHINGTON", - PLAT CREATES THE CITY BLOCKS WHICH THIS IS A PART OF. MONUMENTS ARE PLACED AT THE INTERSECTION OF STREETS AND AVENUE CENTERLINES AS SHOWN BY PLAT" - NO MONUMENT SHOWN

JUNE 16, 1975 AF# 819031, "FOUND CONCRETE MONUMENT SET IN 1954 BY FRANK GILKEY SET IN MONUMENT CASE", (PACIFIC SURVEYING AND ENGINEERING WAS NOT ABLE TO OBTAIN A COPY OF THIS MAP).

OCTOBER 4, 1977, UNRECORDED SURVEY FOR LYLE AND MARC KRUEGER BY ROBERT D. POWELL, PLUS 4303, "MONUMENT"

MARCH 1978, UNRECORDED SURVEY FOR JIM COLLEY BY ROBERT D. POWELL, PLUS 4303, "MONUMENT"

SEPTEMBER 1982, UNRECORDED SURVEY BY ROBERT D. POWELL, PLUS 4303, "FOUND CONCRETE MONUMENT"

MAY 13, 1991, AF# 9105130007, "CONCRETE MONUMENT FOUND"

DECEMBER 17, 1991, AF# 9112170082, "FOUND MONUMENT"

FEBRUARY 14, 1994, AF# 9402140096, "FOUND CONCRETE MONUMENT WITH TACK IN CASE"

SEPTEMBER 9, 1998, AF# 9809090092, "FOUND PIPE WITH BRASS PIN IN CONCRETE IN MONUMENT CASE 3/03/98"

NOVEMBER 23, 2004, AF# 200411230172, "FOUND MONUMENT IN CASE"

MAY 2, 2006, AF# 200605020059, "MONUMENT FOUND"

MAY 1, 2009 PACIFIC SURVEYING AND ENGINEERING FOUND 8" DIAMETER CONCRETE MONUMENT WITH BRASS PIN IN CASE, 1.4" BELOW GRADE. THIS POSITION HAS BEEN ACCEPTED AND USED BY ALL SURVEYS OF RECORD. ACCEPTED AS STREET INTERSECTION MONUMENT.

"D" AVENUE & 12TH STREET

JANUARY 21, 1890, - AF# 16389 (VOL. 2 PAGES 4-7) - "MAP OF THE CITY OF ANACORTES, SKAGIT COUNTY WASHINGTON", - PLAT CREATES THE CITY BLOCKS WHICH THIS IS A PART OF. MONUMENTS ARE PLACED AT THE INTERSECTION OF STREETS AND AVENUE CENTERLINES AS SHOWN BY PLAT" - NO MONUMENT SHOWN

JUNE 16, 1975 AF# 819031, "FOUND OLD CONCRETE MONUMENT WITH COPPER PIN AT INTERSECTION 12TH & "D" AVENUE 8" DEEP. SET MONUMENT CASE"

OCTOBER 4, 1977, UNRECORDED SURVEY FOR LYLE AND MARC KRUEGER BY ROBERT D. POWELL, PLUS 4303, "MONUMENT"

MARCH 1978, UNRECORDED SURVEY FOR JIM COLLEY BY ROBERT D. POWELL, PLUS 4303, "MONUMENT"

SEPTEMBER 1982, UNRECORDED SURVEY BY ROBERT D. POWELL, PLUS 4303, "FOUND CONCRETE MONUMENT"

MAY 13, 1991, AF# 9105130007, "CONCRETE MONUMENT FOUND"

DECEMBER 17, 1991, AF# 9112170082, "FOUND MONUMENT"

FEBRUARY 14, 1994, AF# 9402140096, "FOUND CONCRETE MONUMENT WITH TACK IN CASE"

SEPTEMBER 13, 1994, COOPERS ADDITION DIV. NO 1, AF# 9409130072, "MONUMENT IN CASE"

SEPTEMBER 9, 1998, AF# 9809090092, "FOUND BRASS NAIL IN CONCRETE IN MONUMENT CASE INTERSECTION OF 12TH STREET AND "D" AVENUE"

JULY 26, 2004, AF# 200407260004, "Cased MONUMENT"

NOVEMBER 23, 2004, AF# 200411230172, "FOUND MONUMENT IN CASE"

MAY 6, 2005, AF# 200505060005, "Cased MONUMENT"

MAY 2, 2006, AF# 200605020059, "MONUMENT FOUND"

MAY 1, 2009 PACIFIC SURVEYING AND ENGINEERING FOUND 8" DIAMETER CONCRETE MONUMENT WITH BRASS PIN IN CASE. THIS POSITION HAS BEEN ACCEPTED AND USED BY ALL SURVEYS OF RECORD. ACCEPTED AS STREET INTERSECTION MONUMENT.

"D" AVENUE & 17TH STREET

JANUARY 21, 1890, - AF# 16389 (VOL. 2 PAGES 4-7) - "MAP OF THE CITY OF ANACORTES, SKAGIT COUNTY WASHINGTON", - PLAT CREATES THE CITY BLOCKS WHICH THIS IS A PART OF. MONUMENTS ARE PLACED AT THE INTERSECTION OF STREETS AND AVENUE CENTERLINES AS SHOWN BY PLAT" - NO MONUMENT SHOWN

SEPTEMBER 9, 1998, AF# 9809090092, "FOUND BRASS DISC IN MONUMENT CASE INTERSECTION OF 17TH STREET AND "D" AVENUE 7/31/98."

NOVEMBER 7, 2000, AF# 200010700001, "FOUND INTERSECTION MONUMENT IN CASE"

JANUARY 27, 2003, AF# 200301270117, "FOUND CONCRETE MONUMENT W/ CASE AND COVER"

JUNE 14, 2004, "PLAT OF WINWARD VILLAGE", AF# 200406140129, "FOUND EXISTING MONUMENT"

NOVEMBER 23, 2004, AF# 200411230172, "FOUND MONUMENT IN CASE"

MAY 30, 2006, AF# 200605300167, "Cased MONUMENT"

DECEMBER 28, 2007, AF# 200712280024 - "FOUND CONCRETE MONUMENT IN CASE"

MAY 1, 2009 PACIFIC SURVEYING AND ENGINEERING FOUND 2" BRASS DISC IN 4"x4" CONCRETE STAMPED WITH PLUS# 7597 AND PUNCH MARK IN CASE, 0.25" BELOW GRADE. THIS POSITION HAS BEEN ACCEPTED AND USED BY ALL SURVEYS OF RECORD. ACCEPTED AS STREET INTERSECTION MONUMENT.

SURVEYOR'S CERTIFICATE

This map correctly represents a survey made by me or under my direction in conformance with the requirements of the Survey Recording Act at the request of Mr. Ted Gage, AICP, Planning Director - Samish Indian Tribe in April 2009.

Certificate No.: 35147



AUDITOR'S CERTIFICATE

Filed for record this day of , 20 at
in book of surveys at the request of
PACIFIC SURVEYING AND ENGINEERING SERVICES INC.

J. Youngquist by: *[Signature]*
County Auditor

RECEIVED BY: JUD

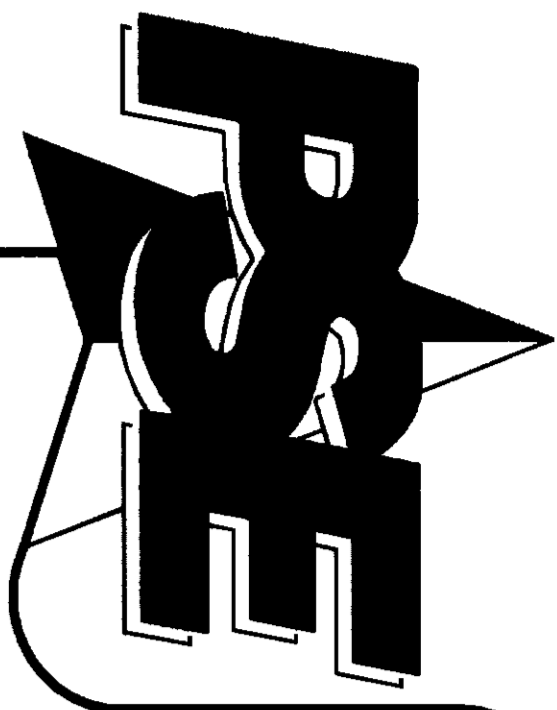
CHECKED BY: PKB

F.B.# 429 & 429.01 DATE: 08/04/09

JOB NO. 2009050

SHEET NO. 1 OF 4

DWG. NO. 2009050_SVX_ROS_Site2.dwg



RECORD OF SURVEY

SITUATE IN A PORTION OF SOUTHWEST QUARTER OF THE NORTHWEST QUARTER OF SECTION 24, TOWNSHIP 35 NORTH,
RANGE 1 EAST, W.M., CITY OF ANACORTES, SKAGIT COUNTY, WASHINGTON

200908050001
Skagit County Auditor
8/6/2009 Page 2 of 4 9:32AM

MONUMENT HISTORY & DESCRIPTIONS CONTINUED FROM SHEET 1

"D" AVENUE & 16TH STREET

JANUARY 21, 1890. - AF# 16389 (VOL. 2 PAGES 4-7) - "MAP OF THE CITY OF ANACORTES, SKAGIT COUNTY WASHINGTON" - PLAT CREATES THE CITY BLOCKS WHICH THIS IS A PART OF. "MONUMENTS ARE PLACED AT THE INTERSECTION OF STREETS AND AVENUE CENTERLINES AS SHOWN BY PLAT" - NO MONUMENT SHOWN

NOVEMBER 7, 2000, AF# 200011070001, "FOUND INTERSECTION MONUMENT IN CASE"

MAY 1, 2009 PACIFIC SURVEYING AND ENGINEERING FOUND 2" BRASS DISC IN 4"x4" CONCRETE STAMPED WITH PLS# 7597 AND PUNCH MARK IN CASE 0.4' BELOW GRADE. THIS POSITION HAS BEEN ACCEPTED AND USED BY ALL SURVEYS OF RECORD. ACCEPTED AS STREET INTERSECTION MONUMENT.

"B" AVENUE & 17TH STREET

JANUARY 21, 1890. - AF# 16389 (VOL. 2 PAGES 4-7) - "MAP OF THE CITY OF ANACORTES, SKAGIT COUNTY WASHINGTON" - PLAT CREATES THE CITY BLOCKS WHICH THIS IS A PART OF. "MONUMENTS ARE PLACED AT THE INTERSECTION OF STREETS AND AVENUE CENTERLINES AS SHOWN BY PLAT" - MONUMENT SHOWN

SEPTEMBER 9, 1998, AF#9809090092 - FOUND NAIL HELD FOR STREET INTERSECTION OF "B" & 17TH. MEASURED DISTANCE TO FOUND MONUMENT AT INTERSECTION OF "D" & 17TH IS 759.74 FEET AS SHOWN THEREON. MONUMENT AS FOUND BY PACIFIC SURVEYING AND ENGINEERING AT INTERSECTION OF "B" & 17TH (SEE NOTE BELOW) MEASURES 760.00 FEET TO SAME FOUND MONUMENT AT "D" & 17TH. RECORD POSITION OF NAIL PER AF# 9809090092 NOT HELD AS STREET INTERSECTION.

MAY 1, 2009 PACIFIC SURVEYING AND ENGINEERING FOUND 2" BRASS DISC IN 4"x4" CONCRETE STAMPED WITH PLS# 9569 AND PUNCH MARK IN CASE 0.4' BELOW GRADE. THIS POSITION HAS BEEN ACCEPTED AND USED BY THIS SURVEY AND ALTHOUGH NOT LIKELY TO BE THE ORIGINAL PLAT MONUMENT, THE MEASURED DISTANCE TO THE INTERSECTION MONUMENT AT "D" & 17TH MATCHES THAT OF THE ORIGINAL PLAT DISTANCE (760 FEET).

PROPERTY LEGAL DESCRIPTIONS

SUBJECT PROPERTY - TAX PARCEL# P56258 & P106717
PER FIRST AMERICAN TITLE INSURANCE COMPANY - GUARANTEE NO. H-1006120-0029766

THE EAST 1/2 OF LOT 13 AND ALL OF LOTS 14-20, INCLUSIVE BLOCK 208, "MAP OF THE CITY OF ANACORTES" AS PER PLAT RECORDED IN VOLUME 2 OF PLATS, PAGES 4, 5, 6 AND 7, RECORDS OF SKAGIT COUNTY, WASHINGTON

SEE STATUTORY WARRANTY DEED - AF# 199911120101
SEE STATUTORY WARRANTY DEED - AF# 199911120117

ADJOINING PROPERTY TO WEST - TAX PARCEL# P105935

LOTS 11 & 12 AND THE WEST 1/2 OF LOT 13, BLOCK 208, "MAP OF THE CITY OF ANACORTES" ACCORDING TO THE PLAT THEREOF, RECORDED IN VOLUME 2 OF PLATS, PAGES 4 THROUGH 7, RECORDS OF SKAGIT COUNTY, WASHINGTON

SEE STATUTORY WARRANTY DEED - AF# 9805070043

ADJACENT PROPERTY TO NORTH - TAX PARCEL# P56256

LOTS 1 THROUGH 5, BLOCK 208, "MAP OF THE CITY OF ANACORTES" ACCORDING TO THE PLAT THEREOF, RECORDED IN VOLUME 1 OF PLATS, PAGE 4, RECORDS OF SKAGIT COUNTY, WASHINGTON
SEE STATUTORY WARRANTY DEED - AF# 200308260061

NOTE: APPARENT SCRIBER'S ERROR IN LEGAL SHOULD READ "VOLUME 2 OF PLATS" PAGES 4 THROUGH 7.

ADJACENT PROPERTY TO NORTH - TAX PARCEL# P104252

LOTS 6, 7 AND THE EAST HALF OF LOT 8, BLOCK 208, "MAP OF THE CITY OF ANACORTES" ACCORDING TO THE PLAT THEREOF, RECORDED IN VOLUME 2 OF PLATS, PAGES 4 THROUGH 7, RECORDS OF SKAGIT COUNTY, WASHINGTON

SITUATED IN SKAGIT COUNTY WASHINGTON

SEE STATUTORY WARRANTY DEED - AF# 200309020247

ADDITIONAL INFORMATION FOR SUBJECT PROPERTY

- 1) NO OBSERVABLE EVIDENCE OF EARTH MOVING WORK, BUILDING CONSTRUCTION OR BUILDING ADDITIONS AT THE TIME THIS SURVEY WAS PERFORMED (MAY 2009)
- 2) RESEARCH AND INFORMATION AVAILABLE FROM CONTROLLING JURISDICTION INDICATES NO COMPLETED AND/OR PROPOSED CHANGES IN STREET RIGHT-OF-WAY LINES AS OF THE DATE OF THIS SURVEY (MAY 2009)
- 3) NO OBSERVABLE EVIDENCE OF SITE USED AS SOLID WASTE DUMP, SWAMP OR SANITARY LANDFILL AS OF THE DATE OF THIS SURVEY (MAY 2009)

SURVEY NOTES

- 1) DATA FOR THIS SURVEY WAS GATHERED BY FIELD TRAVERSE UTILIZING ELECTRONIC DATA COLLECTION IN MAY 2009.
- 2) EQUIPMENT USED: THEODOLITE 00'01.5" EDM: ± 1 PPM, ± 2 MM
- 3) MONUMENTS STAKED ON OR ABOUT JUNE 2009.
- 4) HORIZONTAL DATUM: ASSUMED LOCAL

- 5) PURPOSE OF SURVEY: TO MONUMENT THE CORNERS OF PARCEL NOS P56258 & P106717 ALL IN SECTION 24, TOWNSHIP 35 NORTH, RANGE 1 EAST, W.M., CITY OF ANACORTES, SKAGIT COUNTY, WASHINGTON AND DETECT ANY OCCUPATIONAL INDICATORS, AS SHOWN HEREON
- 6) OCCUPATIONAL INDICATOR NOTE

IN ACCORDANCE WITH THE REVISED CODE OF WASHINGTON: 58.09 AND WASHINGTON ADMINISTRATIVE CODE CHAPTER 332-130, THIS RECORD OF SURVEY DETECTS OCCUPATIONAL INDICATORS, SUCH AS FENCES, THESE INDICATORS REPRESENT A POTENTIAL FOR CLAIMS OF UNWRITTEN TITLE. THIS SURVEY DOES NOT RESOLVE ANY OF THE LEGAL OWNERSHIP ISSUES THAT MAY ARISE FROM THESE UNWRITTEN TITLE CLAIMS.



SURVEY MONUMENT SET AT PROPERTY CORNERS
SET 2" DISC/REBAR - (JUNE 2009)
STAMPED AS SHOWN
(SEE SHEET 4)

PACIFIC SURVEY & ENGINEERING INC

EMAIL: pse@psesurvey.com
www.psesurvey.com

1812 CORNWALL AVE, BELLINGHAM, WA 98225 PHONE:671.7387 FAX:671.4685

RECORD OF SURVEY

SAMISH INDIAN TRIBE

P.O. BOX 217

ANACORTES, WA 98221

DRAWN BY: JUD

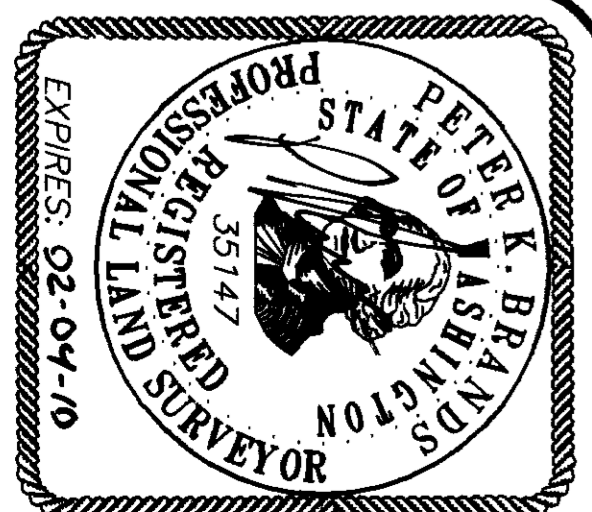
CHECKED BY: PKB

F.B.# 429 & 429.01 DATE: 08/04/09

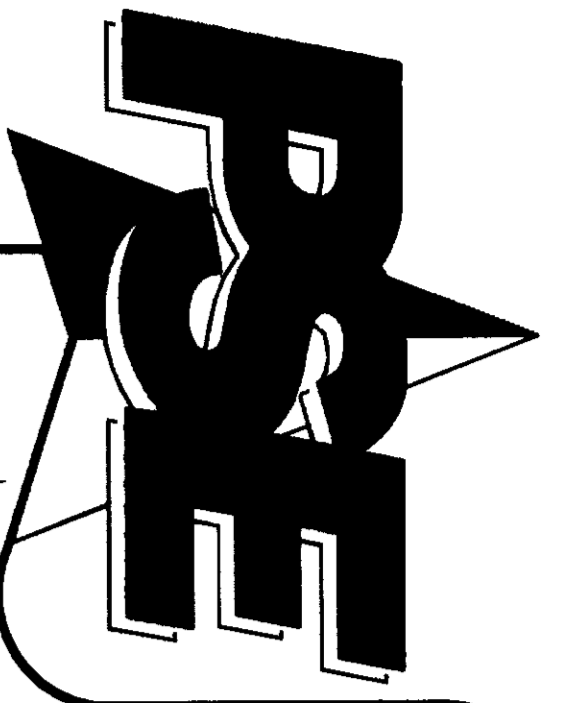
JOB NO. 2009050

SHEET NO. 2 OF 4

DWG. NO. 2009050_svk_ros-she2.dwg



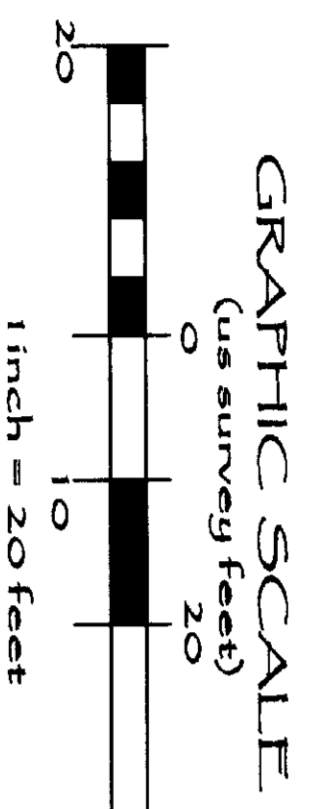
B-04-09



RECORD OF SURVEY

SITUATE IN A PORTION OF SOUTHWEST QUARTER OF THE NORTHWEST QUARTER OF SECTION 24, TOWNSHIP 35 NORTH,
RANGE 1 EAST, W.M., CITY OF ANACORTES, SKAGIT COUNTY, WASHINGTON

200908060001
Skagit County Auditor
8/6/2009 Page 4 of 4 8:32AM



MAP OF THE CITY OF ANACORTES
SKAGIT COUNTY WASHINGTON
VOL 2 PGS. 4-7

16TH ST. (380')
S89°25'19"E 379.99'

BASIS OF BEARINGS
"ASTRONOMIC NORTH"
HOUR ANGLE METHOD

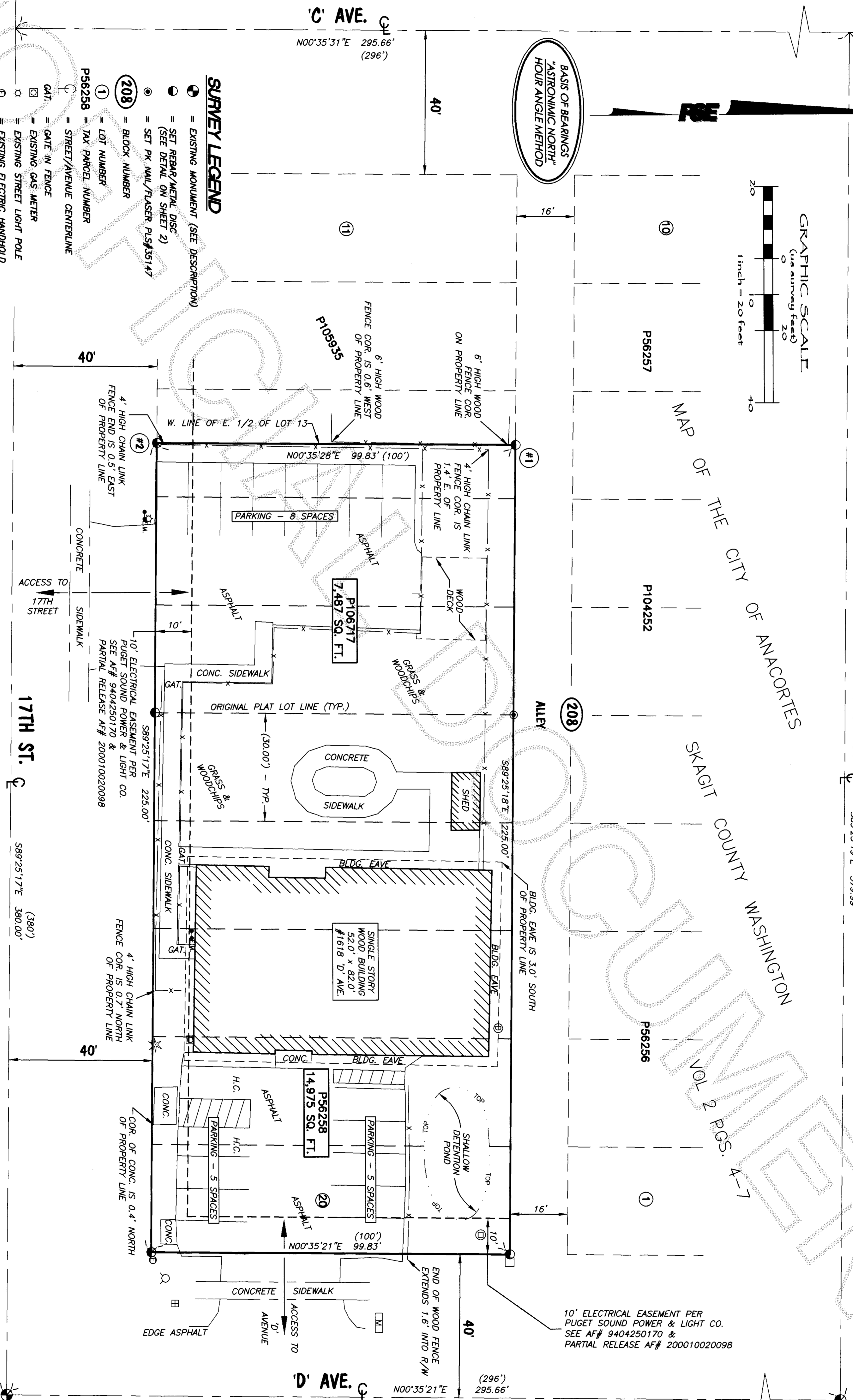
SURVEY LEGEND

- = EXISTING MONUMENT (SEE DESCRIPTION)
- = SET REBAR/METAL DISC (SEE DETAIL ON SHEET 2)
- ⊙ = SET PK NAIL/FLASER PLS#35147
- ① = LOT NUMBER
- ② = BLOCK NUMBER
- P56258 = TAX PARCEL NUMBER
- = STREET/AVENUE CENTERLINE
- GAT. = GATE IN FENCE
- ⊠ = EXISTING GAS METER
- ⊙ = EXISTING STREET LIGHT POLE
- ⊙ = EXISTING ELECTRIC HANDHOLD
- ⊙ = EXISTING ELECTRIC METER/SWITCH
- ⊙ = EXISTING WATER METER
- ⊙ = EXISTING FIRE HYDRANT
- ⊙ = EXISTING STORM DRAIN MANHOLE
- ⊙ = EXISTING STORM DRAIN CLEANOUT
- ⊙ = EXISTING MAILBOX
- ⊙ = EXISTING FIRE TREE
- () = DIMENSION PER PLAT "MAP OF THE CITY OF ANACORTES SKAGIT COUNTY WASHINGTON" AS RECORDED IN VOLUME 2 PAGES 4-7.

RECORD OF SURVEY

SAMISH INDIAN TRIBE
P.O. BOX 217
ANACORTES, WA 98221

- ① SET REBAR/DISC S72°04'W AND 0.12' FROM FOUND R/C PLS# 11941
- ② SET REBAR/DISC S81°24'W AND 0.16' FROM FOUND R/C PLS# 11941



10' ELECTRICAL EASEMENT PER
PUGET SOUND POWER & LIGHT CO.
SEE AF# 9404250170 &
PARTIAL RELEASE AF# 200010020098



DRAWN BY: JUD

CHECKED BY: PKB

F.B.# 429 & 429.01 DATE: 08/04/09

JOB NO. 2009050

SHEET NO. 4 OF 4

DWG. NO. 2009050_SVX_ROS_Site2.dwg

8-04-09