

AMENDED RECORD OF SURVEY

SITUATE IN A PORTION OF THE NORTHWEST 1/4 OF THE SOUTHEAST 1/4 OF SECTION 4, TOWNSHIP 34 NORTH,
RANGE 2 EAST, W.M., CITY OF ANACORTES, SKAGIT COUNTY, WASHINGTON

200810140092
Skagit County Auditor
10/14/2008 Page 1 of 6 1:32PM

PARCEL DESCRIPTIONS

PER GUARDIAN NORTHWEST TITLE & ESCROW ORDER NO. 94786 (EFFECTIVE DATE: MAY 2, 2008 AT 8:00 A.M.)

LEGAL DESCRIPTION (P19916, P120595)

THE LAND REFERRED TO IN THIS REPORT/POLICY IS SITUATED IN THE STATE OF WASHINGTON, COUNTY OF SKAGIT, AND IS DESCRIBED AS FOLLOWS:

LOTS 1 AND 2, SHORT PLAT NO. ANA-02-004, APPROVED JUNE 23, 2002, RECORDED JUNE 30, 2003 UNDER SKAGIT COUNTY AUDITOR'S FILE NO. 200306300367, BEING A PORTION OF NORTHWEST 1/4 OF THE SOUTHEAST 1/4 OF SECTION 4, TOWNSHIP 34 NORTH, RANGE 2 EAST, W.M.,

SITUATE IN SKAGIT COUNTY, WASHINGTON

PER GUARDIAN NORTHWEST TITLE & ESCROW ORDER NO. 94788 (EFFECTIVE DATE: MAY 6, 2008 AT 8:00 A.M.)

LEGAL DESCRIPTION (P19915)

THE LAND REFERRED TO IN THIS REPORT/POLICY IS SITUATED IN THE STATE OF WASHINGTON, COUNTY OF SKAGIT, AND IS DESCRIBED AS FOLLOWS:

THAT PORTION OF THE NORTH 208 FEET OF THE SOUTHWEST 1/4 OF THE NORTHWEST 1/4 OF THE SOUTHEAST 1/4 OF SECTION 4, TOWNSHIP 34 NORTH, RANGE 2 EAST, W.M., LYING SOUTHERLY OF THE RIGHT-OF-WAY LINE DRAWN PARALLEL WITH AND 110 FEET SOUTHERLY, WHEN MEASURED RADIALLY, FROM THE CENTER LINE SURVEY OF STATE HIGHWAY ROUTE NO. 20, JCT. SSH NO. 1-D TO SWANWISH SLOUGH,

SITUATE IN SKAGIT COUNTY, WASHINGTON

AMENDMENT NOTE

THE PURPOSE OF THIS AMENDMENT IS TO REMOVE THE LEGAL DESCRIPTION FOR PARCEL NO. P19910 AS PER THE RECORD OF SURVEY RECORDED UNDER SKAGIT COUNTY AUDITOR'S NO. 200810020061.

PARCEL DESCRIPTIONS CONT...

PER GUARDIAN NORTHWEST TITLE & ESCROW ORDER NO. 94787 (EFFECTIVE DATE: MAY 5, 2008 AT 8:00 A.M.)

LEGAL DESCRIPTION (P19917, P1919, P19920)

THE LAND REFERRED TO IN THIS REPORT/POLICY IS SITUATED IN THE STATE OF WASHINGTON, COUNTY OF SKAGIT, AND IS DESCRIBED AS FOLLOWS:

PARCEL "A":

THE SOUTHWEST 1/4 OF THE NORTHWEST 1/4 OF THE SOUTHEAST 1/4, SECTION 4, TOWNSHIP 34 NORTH, RANGE 2 EAST, W.M.;

EXCEPT THE NORTH 416 FEET THEREOF;

AND EXCEPT COUNTY ROADS.

PARCEL "B":

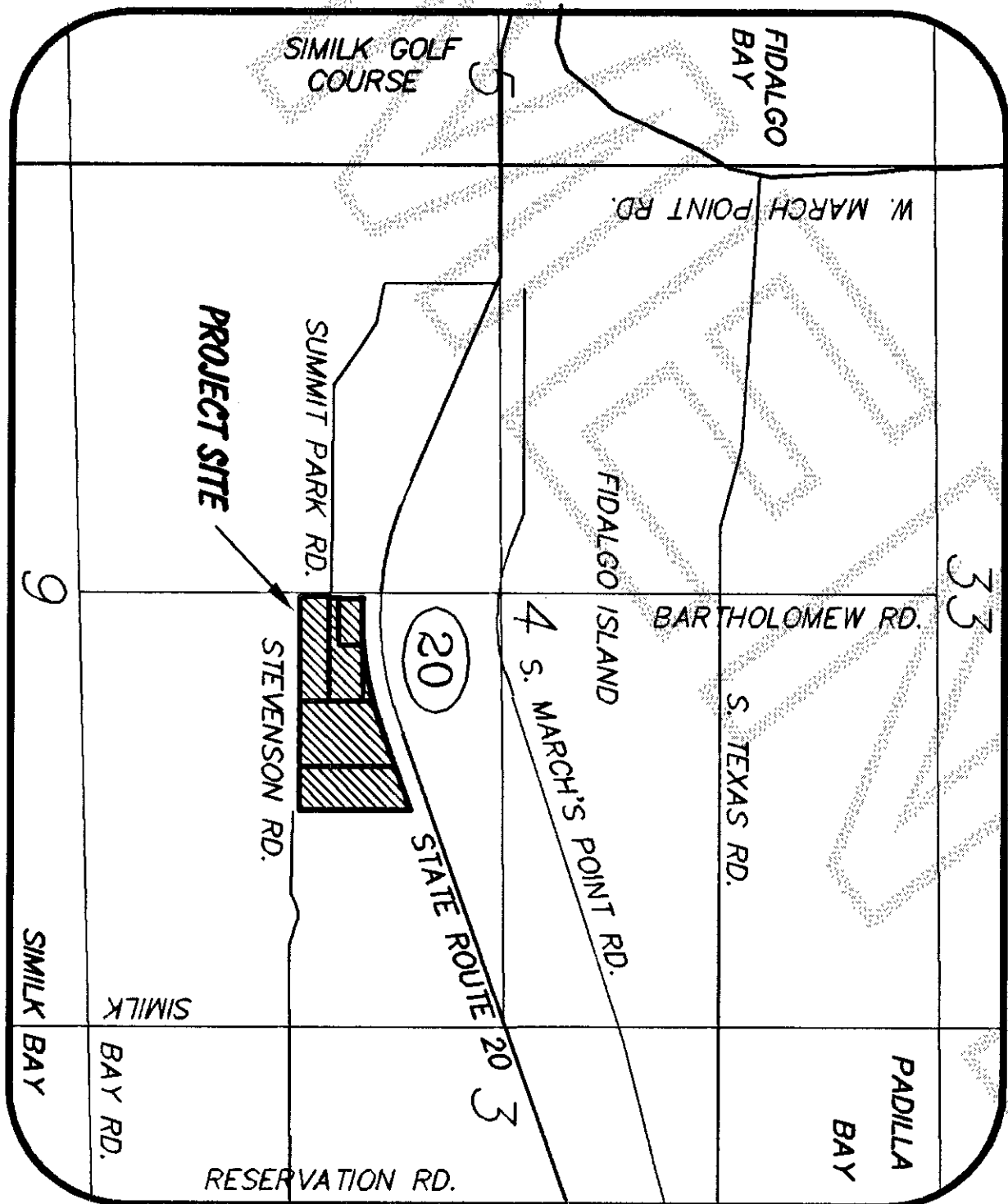
THE SOUTHEAST 1/4 OF THE NORTHWEST 1/4 OF THE SOUTHEAST 1/4, SECTION 4, TOWNSHIP 34 NORTH, RANGE 2 EAST, W.M., EXCEPT ROADS, AND EXCEPT THE EAST 264 FEET THEREOF; AND EXCEPT THAT PORTION THEREOF CONVEYED TO THE STATE OF WASHINGTON FOR HIGHWAY PURPOSES BY DEED RECORDED UNDER AUDITOR'S FILE NO. 806681, ALL LOCATED IN SKAGIT COUNTY, WASHINGTON.

PARCEL "C":

THE EAST 264 FEET OF THE SOUTHEAST 1/4 OF THE NORTHWEST 1/4 OF THE SOUTHEAST 1/4, EXCEPT COUNTY ROAD AND EXCEPT THAT PORTION THEREOF CONVEYED TO THE STATE OF WASHINGTON FOR HIGHWAY PURPOSES BY DEED RECORDED UNDER AUDITOR'S FILE NO. 605972; IN SECTION 4, TOWNSHIP 34 NORTH, RANGE 2 EAST, W.M.

ALSO THAT PORTION OF LOT B OF CITY OF ANACORTES SHORT PLAT NO. ANA-03-002, RECORDED JUNE 20, 2003, UNDER AUDITOR'S FILE NO. 200306200023, LYING SOUTHERLY OF HIGHWAY STATE ROUTE 20; BEING A PORTION OF THE SOUTHWEST 1/4 OF THE SOUTHEAST 1/4 AND THE NORTHWEST 1/4 OF THE SOUTHEAST 1/4, ALL IN SECTION 4, TOWNSHIP 34 NORTH, RANGE 2 EAST, W.M.

SITUATE IN SKAGIT COUNTY, WASHINGTON



VICINITY MAP - N.T.S.

SURVEY NOTES

- 1) DATA FOR THIS SURVEY WAS GATHERED BY FIELD TRAVERSE UTILIZING ELECTRONIC DATA COLLECTION IN SEPTEMBER OF 2008.
- 2) EQUIPMENT USED: THEOMAT 0001.5" EDM: ± 1 PPM, ± 2 MM
- 3) MONUMENTS WERE RECOVERED OR SET IN SEPTEMBER OF 2008.
- 4) HORIZONTAL DATUM: NAD 83/91
WASHINGTON STATE PLANE NORTH ZONE
BASIS OF BEARINGS: NAD 83/91 BASED ON WASHINGTON DEPARTMENT OF TRANSPORTATION MONUMENTS GP29020-89 AND GP29020-90
ALL BEARINGS AND DISTANCES ARE STATE PLANE GROUND TO GET BACK TO GRID MULTIPLY THE COORDINATE BY THE COMBINED FACTOR OF 0.999463713866.
- 5) PURPOSE OF SURVEY: TO RECOVER OR MONUMENT THE SUBJECT PARCEL CORNERS, LOCATE THE EXISTING IMPROVEMENTS, AND TO DEPICT EXISTING OCCUPATIONAL INDICATORS, AS SHOWN HEREON.
- 6) OCCUPATIONAL INDICATOR NOTE:
IN ACCORDANCE WITH THE REVISED CODE OF WASHINGTON: 58.09 AND WASHINGTON ADMINISTRATIVE CODE CHAPTER 332-130, THIS RECORD OF SURVEY DEPICTS OCCUPATIONAL INDICATORS AND ENCROACHMENTS. THESE INDICATORS REPRESENT A POTENTIAL FOR CLAIMS OF UNWRITTEN TITLE. THIS SURVEY DOES NOT RESOLVE ANY OF THE LEGAL OWNERSHIP ISSUES THAT MAY ARISE FROM THESE UNWRITTEN TITLE CLAIMS.
- 7) THIS SURVEY WAS PERFORMED WITH THE BENEFIT OF GUARDIAN NORTHWEST TITLE & ESCROW ORDER NOS. 94786, 94787, 94788, 94789, WITH EFFECTIVE DATES: MAY 2, MAY 3, MAY 6, MAY 6, RESPECTIVELY, 2008 AT 8:00 A.M. REFERENCE SAID ORDERS FOR SUBJECT PARCEL EXCEPTIONS, EASEMENTS, COVENANTS, OR RESTRICTIONS WHICH ARE NOT SHOWN HEREON.

AUDITOR'S CERTIFICATE

Filed for record this 20 day of , 20 at
in book of surveys at page at the request of
PACIFIC SURVEYING AND ENGINEERING SERVICES INC.

County Auditor
J. Youngquist by: [Signature]

RECORD OF SURVEY

SURVEYOR'S CERTIFICATE

This map correctly represents a survey made by me or under my direction in conformance with the requirements of the Survey Recording Act of the request of THE SAMISH INDIAN NATION IN SEPTEMBER, 2008.

Certificate No.: 35147

DRAWN BY: JVD

CHECKED BY: PKB

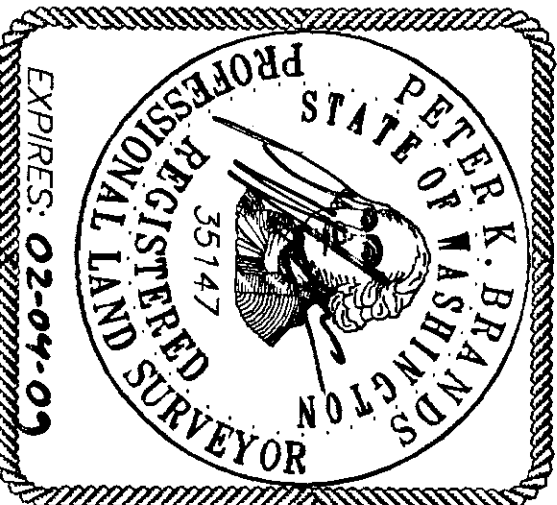
F.R.# 429.00

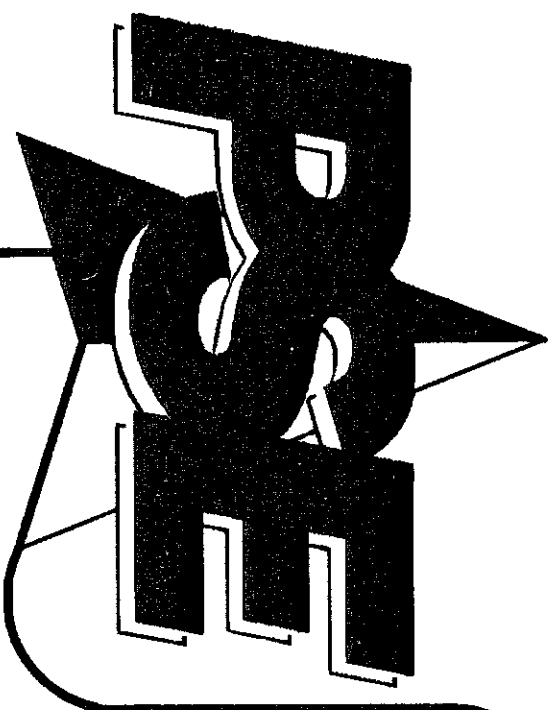
DATE: 10.14.08

JOB NO. 2008135

SHEET NO. 1 OF 6

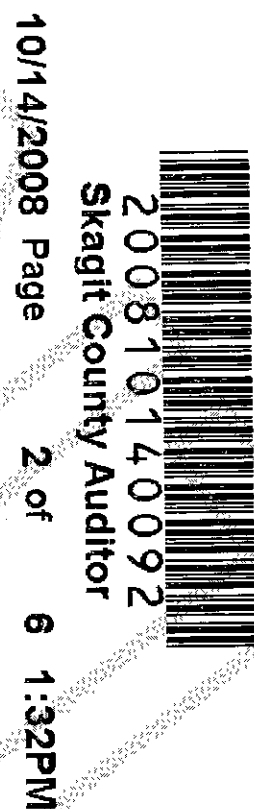
DWG. NO. samish_posdx.dwg





AMENDED RECORD OF SURVEY

SITUATE IN A PORTION OF THE NORTHWEST 1/4 OF THE SOUTHEAST 1/4 OF SECTION 4, TOWNSHIP 34 NORTH,
RANGE 2 EAST, W.M., CITY OF ANACORTES, SKAGIT COUNTY, WASHINGTON



200810140092
Skagit County Auditor

10/14/2008 Page 2 of 6 1:32PM

MONUMENT HISTORY

CENTER QUARTER CORNER

JANUARY 13, 1975 AF#812298 BY HAROLD RADER FOUND NAIL IN BRIDGE WHICH HAS BEEN REFERENCED IN FIELD BOOKS AND ACCEPTED AS CENTER OF SECTION, SINCE 1955.

MAY 12, 1978 AF#879388 BY RADER AND LEONARD AND ASSOCIATES CENTER OF SECTION FOUND NAIL IN BRIDGE WHICH HAS BEEN REFERENCED IN FIELD BOOKS AND ACCEPTED AS CENTER OF SECTION SINCE 1955.

FEBRUARY 2, 1982 AF#202020036 BY JOHN E. LEONARD FOUND OUR NAIL IN BRIDGE, WHICH HAS BEEN REFERENCED IN FIELD BOOKS AND ACCEPTED AS CENTER OF SECTION SINCE 1955.

AUGUST 15, 1986 AF#612010035 JOHN E. LEONARD, FOUND SHIPS NAIL IN ROAD OVER BRIDGE.

OCTOBER 8, 1987 AF#8710080034 BY LEONARD AND BOUDINOT, INC NAIL IN BRIDGE.

MAY 4, 1988 AF#805040016 BY JOHN E. LEONARD FOUND OUR NAIL IN BRIDGE, WHICH HAS BEEN REFERENCED IN FIELD BOOKS AND ACCEPTED AS CENTER OF SECTION SINCE 1955.

FEBRUARY 23, 1990 AF#9002230003 BY JOHN E. LEONARD FOUND OUR NAIL IN BRIDGE, WHICH HAS BEEN REFERENCED IN FIELD BOOKS AND ACCEPTED AS CENTER OF SECTION SINCE 1955.

JULY 9, 1991 AF#9107090064 BY LEONARD AND BOUDINOT, INC FOUND OUR NAIL IN BRIDGE WHICH HAS BEEN REFERENCED IN FIELD BOOKS AND ACCEPTED AS CENTER OF SECTION SINCE 1955.

NOVEMBER 13, 1992 AF#9211130005 BY LEONARD, BOUDINOT AND SKODJE, INC, FOUND OUR NAIL IN BRIDGE WHICH HAS BEEN REFERENCED IN FIELD BOOKS AND ACCEPTED AS CENTER OF SECTION SINCE 1955.

DECEMBER 4, 1992 AF#9212040025 BY SENRAU AND LISSER FOUND SHIPS NAIL IN BRIDGE (1991).

JANUARY 6, 1993 AF#9301060082 BY ALBERT BOWERS, FOUND NAIL IN BRIDGE.

FEBRUARY 1, 1995 AF#9502010053 BY MICHAEL MOWER AND ASSOCIATES, FOUND BOAT SPIKE.

MARCH 2, 1995 AF#9503020379, BY LEONARD, BOUDINOT AND SKODJE, INC, CENTER OF SECTION 4-34-2 NAIL, AS SHOWN ON SURVEY, BOOK 7 AT PAGE 112 (AF#8710080034), AND SURVEY, BOOK 2, PAGE 97 (AF#879388).

SEPTEMBER 26, 1995 AF#9509250046 BY LEONARD, BOUDINOT AND SKODJE, INC, CENTER OF SECTION 4-34-2 PER SURVEY BOOK 7, PAGE 112 (AF#8710080034), AND SURVEY BOOK 2 PAGE 97(AF#879388).

MAY 20, 1996 AF#9605200101 BY LEONARD, BOUDINOT AND SKODJE, INC, POSITION FROM SURVEY RECORDED IN BOOK 17 AT PAGE 197(AF#9601080068).

MAY 20, 1996 AF#9605200101 BY LEONARD, BOUDINOT AND SKODJE, INC, POSITION FROM SURVEY RECORDED IN BOOK 17 AT PAGE 197(AF#9601080068).

JULY 23, 1998 AF#9807230156 BY SKAGIT SURVEYORS 9/23/93 FOUND BOAT SPIKE ON BRIDGE, 0.35 DOWN.

JUNE 13, 2003 AF#200306300367 BY LEONARD, BOUDINOT AND SKODJE, INC, CENTER OF SECTION 4-34-2 NAIL AS SHOWN ON SURVEY, BOOK 7 AT PAGE 112 (AF#8710080034), AND SURVEY BOOK 2 AT PAGE 97(AF#879388), FOUND NAIL SET ON NORTH-SOUTH CENTERLINE OF SECTION 4, 159.02 FEET OF SOUTH OF CENTER OF SECTION 01/22/02.

JUNE 20, 2003 AF#200306200023, BY MICHAEL MOWER & ASSOCIATES, FOUND BOAT SPIKE, DECEMBER 2, 2003 AF#200312020023, BY SCHEMMER ENGINEERING, INC, FOUND NAIL IN BRIDGE.

FEBRUARY 13, 2004 AF#200402130061 BY MICHAEL MOWER AND ASSOCIATES BOAT SPIKE IN BRIDGE.

MAY 4, 2005 AF#3200505040052, BY WASHINGTON STATE DEPARTMENT OF TRANSPORTATION, SHEET 1 OF 26, 22 OF 26, AND 25 OF 26, CENTER 1/2 CORNER SECTION 4, T. 34 N., R. 2 E., W.M., FOUND SPIKE IN BRIDGE DECK, DOWN 0.1 AS PER RECORD OF SURVEY, AS RECORDED IN VOLUME 13 OF SURVEYS AT PAGE 116, RECORDS OF SKAGIT COUNTY, WASHINGTON (AF#921130005).

SEPTEMBER 23, 2008 PACIFIC SURVEYING AND ENGINEERING FOUND A 60 PENNEY NAIL SET IN WOOD BRIDGE DECK, 0.3 BELOW GRADE. THIS POINT WAS SET PROCEURALLY CORRECT (SEE ABOVE SURVEYS). MATHEMATICALLY WITHIN TOLERANCE HAS BEEN ACCEPTED AND USED FOR MORE THAN FIFTY YEARS ON RECORD OF SURVEY AND SHORT PLATS AND HAS RELATIVE CONFORMITY TO THE SECTION, ACCEPTED AS CENTER QUARTER CORNER.

EAST QUARTER CORNER

JOHN A CORNELIUS, DEPUTY SURVEYOR UNDER GOVERNMENT CONTRACT NUMBER 125, SET A POST FOR 1/2 SECTION CORNER ON AUGUST 12, 1871 (VOLUME R-22, PG 25).

OCTOBER 1938, W.A. COSTELLO, SKAGIT COUNTY ROAD ENGINEER, CALLS OUT A CEDAR POST AND 1.5 INCH PIPE.

OCTOBER 15, 1954 TRANS MOUNTAIN OIL PIPE LINE RIGHT OF WAY MAP BY E.W. GOODCH, (DRAWING R-A-931) STATES I.P. FOUND.

OCTOBER 28, 1954 ROBERTSON EVERETT ADDITION BY A.L. McWILLIAM IDENTIFIES THE CORNER AS FOUND WITH NO DESCRIPTION.

MAY 12, 1978 AF#879388 BY RADER AND LEONARD AND ASSOCIATES 1/2 CORNER ESTABLISHED FROM FRANK GUKLEY SURVEY SET CONCRETE MONUMENT WITH BRASS CAP STAMPED EAST 1/4 CORNER 4-34-2 R & L 8992, IN FREEMAN MEDIAN.

OCTOBER 8, 1987 AF#8710080034 BY LEONARD AND BOUDINOT, INC CONCRETE MONUMENT WITH BRASS DISC.

MAY 2, 1994 SKAGIT COUNTY SURVEYORS B. PRATER AND V. GRIFFITHS FIND A CONCRETE MONUMENT WITH BRASS CAP STAMPED "E 1/2 COR 4-34-2 R-L 8992"

FEBRUARY 1, 1995 AF#9502010053 BY MICHAEL MOWER AND ASSOCIATES, CONCRETE MONUMENT.

MARCH 2, 1995 AF#9503020379, BY LEONARD, BOUDINOT AND SKODJE, INC, EAST 1/2 CORNER SECTION 4-34-2 CONCRETE MONUMENT WITH BRASS CAP, AS PER SURVEY, BOOK 7 AT PAGE 112 (AF#8710080034) AND SURVEY BOOK 2 AT PAGE 97(AF#879388).

FEBRUARY 16, 1995 AF#9502160018 BY LEONARD, BOUDINOT AND SKODJE, INC, FOUND CONCRETE MONUMENT WITH BRASS CAP MARKED "EAST 1/2 CORNER", 1/7792.

SEPTEMBER 26, 1995 AF#9509250046 BY LEONARD, BOUDINOT AND SKODJE, INC, EAST 1/2 CORNER SECTION 4-34-2 CONCRETE MONUMENT WITH BRASS CAP, PER SURVEY BOOK 7, PAGE 112 (AF#8710080034) AND SURVEY BOOK 2 PAGE 97(AF#879388).

JANUARY 8, 1996 AF#9601080068 BY LEONARD, BOUDINOT AND SKODJE, INC, CONCRETE MONUMENT WITH RADER AND LEONARD BRASS CAP LABELED EAST 1/2 11-07-92.

MAY 20, 1996 AF#9605200101 BY LEONARD, BOUDINOT AND SKODJE, INC, CONCRETE MONUMENT WITH RADER AND LEONARD BRASS CAP LABELED EAST 1/2.

JULY 23, 1998 AF#9807230156 BY SKAGIT SURVEYORS AND ENGINEERS 1/25/80 FOUND CONCRETE MONUMENT IN MEDIAN.

SEPTEMBER 29, 1998, SKAGIT COUNTY FIELDBOOK (BP & BG), PADILLA HEIGHTS ROAD CONTROL TRAVERSE, FINDS A BRASS CAP ON CONCRETE MONUMENT.

OCTOBER 14, 1998, SKAGIT COUNTY FIELDBOOK, RESERVATION ROAD CONTROL TRAVERSE, FINDS A BRASS CAP ON CONCRETE MONUMENT.

FEBRUARY 11, 1999 AF#9902110074 BY LEONARD, BOUDINOT AND SKODJE, INC WEST 1/2 CORNER SECTION 3-34-2 FOUND CONCRETE MONUMENT WITH BRASS CAP MARKED "EAST 1/2 CORNER" 01/20/93.

MARCH 24, 2000 AF#200003240012, BY CLAIR CROSSMAN AND ASSOCIATES SHOWS A CONCRETE SYMBOL WITHOUT DESCRIPTION.

SEPTEMBER 13, 2000, AF#20000913010, BY SKAGIT SURVEYORS AND ENGINEERS, FOUND CONCRETE MONUMENT IN MEDIAN OF HIGHWAY 20 ON 1/25/80.

JUNE 13, 2003 AF#200306300367 BY LEONARD, BOUDINOT AND SKODJE, INC, EAST 1/2 CORNER SECTION 4-34-2 CONCRETE MONUMENT WITH BRASS CAP AS PER SURVEY, BOOK 7 AT PAGE 112 (AF#8710080034) AND SURVEY BOOK 2 AT PAGE 97(AF#879388).

JUNE 20, 2003 AF#200306200023, BY MICHAEL MOWER & ASSOCIATES, FOUND CASSED MONUMENT.

MAY 4, 2005 AF#3200505040052, BY WASHINGTON STATE DEPARTMENT OF TRANSPORTATION, SHEET 1 OF 26, AND 25 OF 26, EAST 1/2 CORNER SECTION 4, T. 34 N., R. 2 E., W.M., FOUND BRASS DISK, CONCRETE POST, DOWN 0.2 FEET AS PER RECORD OF SURVEY, AS RECORDED IN VOLUME 16 OF SURVEYS AT PAGE 177, RECORDS OF SKAGIT COUNTY, WASHINGTON (AF#9503020379).

SEPTEMBER 23, 2008 PACIFIC SURVEYING AND ENGINEERING FOUND A 2 INCH OUTSIDE DIAMETER BRASS CAP WITH PINCH MARK SET IN CONCRETE, FLUSH WITH THE GROUND IN THE MEDIAN OF STATE ROUTE # 20, THE CAP IS STAMPED "E 1/2 CORNER 34-2 R-L 8992", ORIENTED SOUTH, ACCEPTED AS EAST QUARTER CORNER.

SOUTHEAST SECTION CORNER

JOHN A CORNELIUS, DEPUTY SURVEYOR UNDER GOVERNMENT CONTRACT NUMBER 125, SET A POST FOR SECTION CORNER ON AUGUST 12, 1871 (VOLUME R-22, PG 24).

GEORGE R. CAMPBELL, U.S. SURVEYOR, UNDER GOVERNMENT CONTRACT NUMBER 35, COMPLETING AUGUST 16, 1917 AND COMPLETED DECEMBER 31, 1917, FINDS AN IRON PIPE, THE EVIDENT AND UNQUESTIONED LOCATION OF THE OLD OBLITERATED SECTION CORNER, AS IDENTIFIED BY ANDREW JOE, DAVE GATES AND OTHERS, AND FURTHER VERIFIED BY THE ACTS OF LANDOWNERS. CORNER IS REESTABLISHED AT THE SAME POINT WITH A 1 INCH IRON POST WITH 2 INCH BRASS CAP MARKED, "134N R2E S4 S3 S9 S10 1917" (VOLUME 1-4, PG 78).

MAY 10, 1994, BOB PRATER, SKAGIT COUNTY SURVEYOR, FINDS 1917 GLO BRASS CAP +- 2.5 FEET DOWN, DIRECTLY UNDER BROKEN OFF CONCRETE MON. DOES NOT DISTURB CONC MON.

FEBRUARY 1, 1995 AF#9502010053 BY MICHAEL MOWER AND ASSOCIATES, FOUND CONCRETE MONUMENT BROKEN TOP.

FEBRUARY 16, 1995 AF#9502160018 BY LEONARD, BOUDINOT AND SKODJE, INC, FOUND BROKEN CONCRETE MONUMENT 01/07/92.

SEPTEMBER 26, 1995 AF#9509250046 BY LEONARD, BOUDINOT AND SKODJE, INC, CONCRETE MONUMENT, PER SURVEY BOOK 11, PAGE 97.

FEBRUARY 11, 1999 AF#9902110074 BY LEONARD, BOUDINOT AND SKODJE, INC, FOUND BROKEN CONCRETE MONUMENT 01/07/92.

MARCH 24, 2000 AF#200003240012, BY CLAIR CROSSMAN AND ASSOCIATES SHOWS A CONCRETE SYMBOL WITHOUT DESCRIPTION.

MARCH 2, 1995 AF#9503020379, BY LEONARD, BOUDINOT AND SKODJE, INC, EAST 1/2 CORNER SECTION 4-34-2 CONCRETE MONUMENT, AS PER SURVEY, BOOK 11 AT PAGE 97.

JULY 23, 1998 AF#9807230156 BY SKAGIT SURVEYORS AND ENGINEERS 1/25/80 FOUND CONCRETE MONUMENT WITH BROKEN TOP.

SEPTEMBER 13, 2000, AF# 20000913010, BY SKAGIT SURVEYORS AND ENGINEERS, FOUND CONCRETE MONUMENT WITH BROKEN TOP ON 10/14/93.

MAY 29, 2003 AF#200306300367 BY LEONARD, BOUDINOT AND SKODJE, INC, FOUND BROKEN CONCRETE MONUMENT AS PER SURVEY BOOK 11 AT PAGE 97.

JUNE 20, 2003 AF#200306200023, BY MICHAEL MOWER & ASSOCIATES, FOUND CONCRETE MONUMENT BUSTED TOP.

MAY 4, 2005 AF#3200505040052, BY WASHINGTON STATE DEPARTMENT OF TRANSPORTATION, SHEET 1 OF 26, AND 25 OF 26, SOUTHWEST CORNER SECTION 3, T. 34 N., R. 2 E., W.M., FOUND 4 INCH x 4 INCH CONCRETE POST WITH TOP BROKEN OFF, AS PER RECORD OF SURVEY, AS RECORDED IN VOLUME 16 OF SURVEYS AT PAGE 177(AF#9503020379), RECORDS OF SKAGIT COUNTY, WASHINGTON, USED CENTER.

SEPTEMBER 23, 2008 PACIFIC SURVEYING AND ENGINEERING FOUND 4 INCH x 4 INCH CONCRETE MONUMENT WITH THE TOP BROKEN OFF, MONUMENT APPEARS TO HAVE BEEN HIT BY A VEHICLE. REMOVED CONCRETE MONUMENT AND RECOVERED A 2 INCH OUTSIDE DIAMETER BRASS CAP ON A 1 INCH OUTSIDE DIAMETER IRON PIPE. STAMPED "134N R2E S4 S3 S9 S10 1917", 2.5 FEET BELOW GRADE, THE CAP IS ORIENTED WEST, SET A MONUMENT CASE AND LID WITH A 6 FOOT CARBONITE POST ON THE SOUTH SIDE OF MONUMENT, ACCEPTED AS THE SOUTHEAST CORNER OF SECTION.

RECORD OF SURVEY

SAMISH INDIAN NATION
P.O. BOX 217
ANACORTES, WA 98221

DRAWN BY: JVD CHECKED BY: PKB

F.B.# 429.00

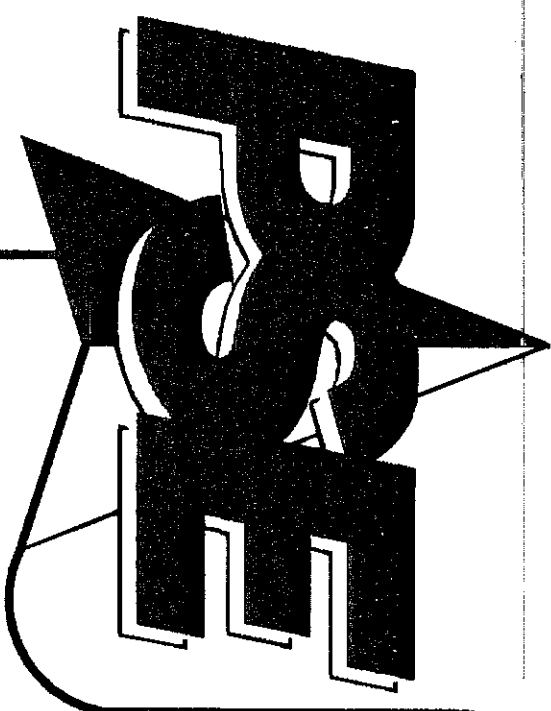
DATE: 10.14.08

JOB NO. 2008135

SHEET NO. 2 OF 6

DWG. NO. samish_rss0x.dwg





PACIFIC SURVEY & ENGINEERING INC EMAIL: pse@psurvey.com
1812 CORNWALL AVE, BELLINGHAM, WA 98225 PHONE: 671.7387 FAX: 671.4685 www.psurvey.com

AMENDED RECORD OF SURVEY

SITUATE IN A PORTION OF THE NORTHWEST 1/4 OF THE SOUTHEAST 1/4 OF SECTION 4, TOWNSHIP 34 NORTH,
RANGE 2 EAST, W.M., CITY OF ANACORTES, SKAGIT COUNTY, WASHINGTON

200810140092
Skagit County Auditor
10/14/2008 Page 3 of 6 1:32PM

SOUTH QUARTER CORNER

JOHN A CORNELIUS, DEPUTY SURVEYOR UNDER GOVERNMENT CONTRACT NUMBER 125, SET A POST FOR 1/4 SECTION CORNER ON AUGUST 12, 1871 (VOLUME R-22, PG 24).
JULY 1913, A.L. STRONG, COUNTY ENGINEER, CALLS OUT A BEARING BREAK AT 1/4 CORNER WITH NO MONUMENT DETAIL. (TRANSIT BK 60)
OCTOBER 28, 1954 ROBERTSON EVERETT ADDITION BY A.L. McILLIAN IDENTIFIES THE CORNER AS FOUND WITH NO DESCRIPTION.
JANUARY 13, 1975 AF#812298 BY HAROLD RADER FOUND NAIL IN ROAD FROM FIELD BOOK REFERENCES GOING BACK TO 1949.
FEBRUARY 2, 1982 AF#202020036 BY JOHN E. LEONARD FOUND MONUMENT IN CASE.
MAY 4, 1988 AF#8805040016 BY JOHN E. LEONARD FOUND MONUMENT IN CASE.
JANUARY 6, 1993 AF#9301060082 BY ALBERT BOWERS, FOUND ENGASED MONUMENT.
FEBRUARY 23, 1990 AF#9002230003 BY JOHN E. LEONARD FOUND MONUMENT IN CASE.
JULY 9, 1991 AF#9107090064 BY LEONARD AND BOUDINOT, INC MONUMENT IN CASE.
DECEMBER 4, 1992 AF#9212040025 BY SEMRAU AND LUSSEY FOUND MONUMENT IN CASE (1991)
FEBRUARY 1, 1995 AF#9502010053 BY MICHAEL MOWER AND ASSOCIATES, FOUND CONCRETE MONUMENT IN CASE DECEMBER 1993.
MARCH 2, 1995 AF#9503020379, BY LEONARD, BOUDINOT AND SKODJE, SOUTH 1/4 CORNER SECTION 4-34-2 MONUMENT IN CASE, AS SHOWN ON SURVEY, BOOK 11 AT PAGE 120 (AF#9107090064).
JULY 23, 1998 AF#9807230156 BY SKAGIT SURVEYORS 1/25/80 FOUND CONCRETE MONUMENT AND BRASS CAP IN CASE AND COVER.
MARCH 24, 2000 AF#200003240012, BY CLAIR CROSSMAN AND ASSOCIATES SHOWS A MONUMENT SYMBOL WITHOUT DESCRIPTION.
SEPTEMBER 13, 2000, AF# 20000913010, BY SKAGIT SURVEYORS AND ENGINEERS, FOUND CONCRETE MONUMENT AND BRASS CAP IN CASE AND COVER ON 9/23/93.
JUNE 20, 2003 AF#200306200023, BY MICHAEL MOWER & ASSOCIATES, FOUND CASED MONUMENT.
DECEMBER 2, 2003 AF#200312020023, BY SCHEMWER ENGINEERING, INC, FOUND MONUMENT IN CASE.
FEBRUARY 13, 2004 AF#200402130061 BY MICHAEL MOWER AND ASSOCIATES, BRASS CAP/CONCRETE MONUMENT/CASED.
MAY 4, 2005 AF#3200505040052, BY WASHINGTON STATE DEPARTMENT OF TRANSPORTATION SHEET 1 OF 26, 22 OF 26, AND 25 OF 26, SOUTH 1/4 CORNER SECTION 4, T. 34 N., R. 2 E., W.M., FOUND BRASS DISK, CONCRETE POST, MONUMENT WELL, AS PER RECORDED VOLUME 16 OF SURVEYS AT PAGE 177(A#9503020379), RECORDS OF SKAGIT COUNTY, WASHINGTON.
SEPTEMBER 23, 2008 PACIFIC SURVEYING AND ENGINEERING FOUND A 3 INCH DIAMETER BRASS CAP WITH DRILL HOLE, SET IN CONCRETE, IN 8 INCH DIAMETER MONUMENT CASE, 0.1 BELOW GRADE OF J. THOMPSON ROAD, STAMPED "WASHINGTON-COUNTY REFERENCE MARK", ORIENTED WEST, ACCEPTED AS THE SOUTH QUARTER CORNER.

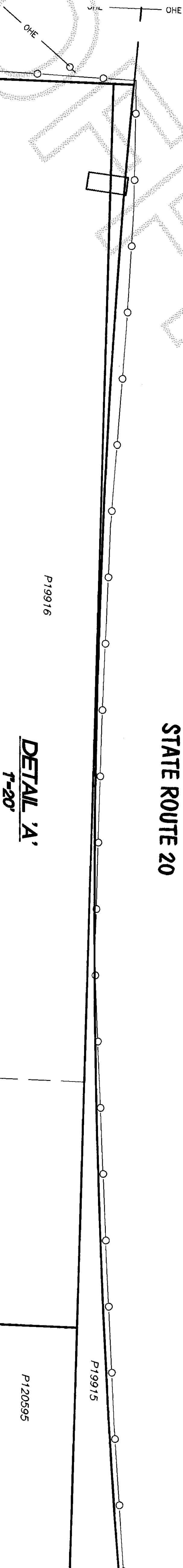
NORTH QUARTER CORNER

JOHN A CORNELIUS, DEPUTY SURVEYOR UNDER GOVERNMENT CONTRACT NUMBER 125, SET A POST FOR SECTION CORNER ON AUGUST 4, 1871 (VOLUME R-22, PG 8).
OCTOBER 15, 1954 TRANS MOUNTAIN OIL PIPE LINE RIGHT OF WAY MAP BY E.W. GOOCH, (DRAWING R-A-931) STATES I.P.FOUND.
OCTOBER 28, 1954 ROBERTSON EVERETT ADDITION BY A.L. McILLIAN IDENTIFIES THE CORNER AS FOUND WITH NO DESCRIPTION.
MAY 12, 1978 AF#879388 BY RADER AND LEONARD AND ASSOCIATES ESTABLISHED FROM FRANK GILKEY SURVEY MONUMENT NOT FOUND.
MARCH 2, 1995 AF#9503020379, BY LEONARD, BOUDINOT AND SKODJE, NORTH 1/4 CORNER SECTION 4-34-2 GILKEY LOCATION AS SHOWN ON SURVEY BOOK 2 PAGE 97(A#879388).
JANUARY 8, 1996 AF#96001980068 BY LEONARD, BOUDINOT AND SKODJE, INC, POSITION FROM RECORD OF SURVEY FILED IN VOLUME 16 PAGE 177(A#9503020379).
MAY 20, 1996 AF#9605200101 BY LEONARD, BOUDINOT AND SKODJE, INC, POSITION FROM SURVEY RECORDED IN BOOK 17 PAGE 197(A#9503020379).
SEPTEMBER 13, 2000, AF# 20000913010, BY SKAGIT SURVEYORS AND ENGINEERS, FOUND 1" AXLE IN BURIED CASE AND COVER ON 2/20/91.
MAY 4, 2005 AF#3200505040052, BY WASHINGTON STATE DEPARTMENT OF TRANSPORTATION SHEET 1 OF 26, SHEET 22 OF 26, AND 25 OF 26, FOUND BRASS DISK, CONCRETE POST, DOWN 0.2 FEET AS PER RECORD OF SURVEY RECORDED IN VOLUME 16 OF SURVEYS AT PAGE 177, RECORDS OF SKAGIT COUNTY, WASHINGTON (AF#9503020379).
SEPTEMBER 23, 2008 PACIFIC SURVEYING AND ENGINEERING FOUND A 3 INCH HOLE IN ASPHALT WITH A LID OF MONUMENT CASE EXPOSED, THIS POINT WAS NOT SURVEYED OR MEASURED FOR THIS SURVEY.

WEST QUARTER CORNER

JOHN A CORNELIUS, DEPUTY SURVEYOR UNDER GOVERNMENT CONTRACT NUMBER 125, SET A POST FOR 1/4 SECTION CORNER, BUILT A MOUND WITH PITS AND DROVE A CHARED STAKE 14 INCHES LONG AT FOOT OF POST ON AUGUST 12, 1871 (VOLUME R-22, PG 23).
OCTOBER 28, 1954 ROBERTSON EVERETT ADDITION BY A.L. McILLIAN IDENTIFIES THE CORNER AS FOUND WITH NO DESCRIPTION.
AUGUST 2, 1960 WASHINGTON DEPARTMENT OF TRANSPORTATION JCT.SSH NO. 1-D TO SNOWBUSH SLOUGH, SHEET 2 OF 118 HAS A MONUMENT SYMBOL AND A COORDINATE LISTED.
JANUARY 13, 1975 AF#812298 BY HAROLD RADER FOUND HEADED SPIKE FROM FIELD BOOK REFERENCES, CORNER HAS BEEN MAINTAINED BY REFERENCE POINTS SINCE 1950.
FEBRUARY 2, 1982 AF#202020036 BY JOHN E. LEONARD REPLACED ROUND HEADED SPIKE WITH 3/4" INCH PIPE IN 1978, SPIKE FIRST TIE IN AND ACCEPTED BY FRANK GILKEY IN 1950.
MAY 4, 1988 AF#8805040016 BY JOHN E. LEONARD REPLACED ROUND HEADED SPIKE WITH 3/4" INCH PIPE IN 1978, SPIKE FIRST TIE IN AND ACCEPTED BY FRANK GILKEY IN 1950.
FEBRUARY 23, 1990 AF#9002230003 BY JOHN E. LEONARD REPLACED ROUND HEADED SPIKE WITH 3/4" INCH PIPE IN 1978, SPIKE FIRST TIE IN AND ACCEPTED BY FRANK GILKEY IN 1950.
JULY 9, 1991 AF#9107090064 BY LEONARD AND BOUDINOT, INC REPLACED ROUND HEADED SPIKE WITH 3/4" INCH PIPE IN 1978, SPIKE FIRST TIE IN AND ACCEPTED BY FRANK GILKEY.
NOVEMBER 13, 1992 AF#9211130005 BY LEONARD, BOUDINOT AND SKODJE, INC, REPLACED ROUND HEADED SPIKE WITH 3/4" INCH IRON PIPE IN 1978, SPIKE FIRST TIED IN AND ACCEPTED BY FRANK GILKEY IN 1950.
DECEMBER 4, 1992 AF#9212040025 BY SEMRAU AND LUSSEY FOUND 3/4" INCH I.P. WITH CAP (1991).
JANUARY 8, 1996 AF#9601080068 BY LEONARD, BOUDINOT AND SKODJE, INC, FOUND 3/4" INCH IRON PIPE.
MAY 20, 1996 AF#9605200101 BY LEONARD, BOUDINOT AND SKODJE, INC, FOUND 3/4" INCH IRON PIPE 12-13-78.
SEPTEMBER 13, 2000, AF# 20000913010, BY SKAGIT SURVEYORS AND ENGINEERS, COMPUTED FROM SURVEY FILED IN VOLUME 3 OF SURVEYS AT PAGE 165 (AF#202020036).
DECEMBER 2, 2003 AF#200312020023, BY SCHEMWER ENGINEERING, INC, FOUND 3/4" INCH IRON PIPE.
MAY 4, 2005 AF#3200505040052, BY WASHINGTON STATE DEPARTMENT OF TRANSPORTATION SHEET 1 OF 26, 21 OF 26, AND 25 OF 26, WEST 1/4 CORNER SECTION 4, T. 34 N., R. 2 E., W.M., FOUND 1/2 INCH DIAMETER REBAR IN 1" IRON PIPE, DOWN 0.1 FEET AS RECORDED IN VOLUME 13 OF SURVEYS AT 116, RECORDS OF SKAGIT COUNTY, WASHINGTON (AF#921130005).
SEPTEMBER 23, 2008 PACIFIC SURVEYING AND ENGINEERING FOUND A 3/4 INCH OUTSIDE DIAMETER IRON PIPE, NO CAP, 0.1" BELOW GRADE OF MARCH POINT ROAD, SET WOOD PLUG AND TACK INSIDE PIPE, ACCEPTED AS WEST QUARTER CORNER.

STATE ROUTE 20



RECORD OF SURVEY

SAMISH INDIAN NATION
P.O. BOX 217
ANACORTES, WA 98221

DRAWN BY: JVD

CHECKED BY: PKB

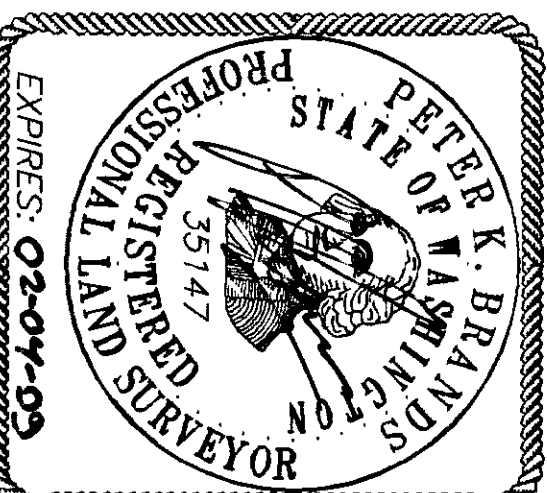
F.B.# 429.00

DATE: 10.14.08

JOB NO. 2008135

SHEET NO. 3 OF 6

DWG. NO. samish_ross0x.dwg

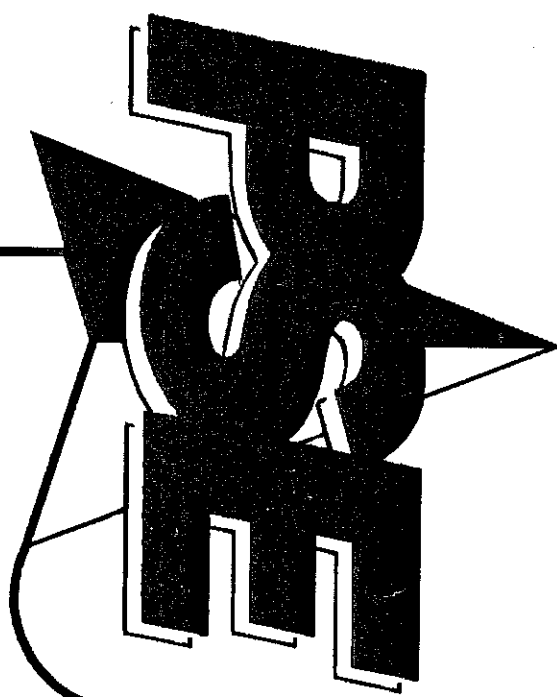


10-14-09

PACIFIC SURVEY & ENGINEERING INC

1812 CORNWALL AVE, BELLINGHAM, WA 98225 PHONE: 671.7387 FAX: 671.4685

EMAIL: pse@pse-survey.com
www.pse-survey.com



WEST 1/4 CORNER
FND. 3/4" IRON PIPE
0.1' B.G. IN CL. MARCH
POINT ROAD, SET WOOD
PLUG & TACK INSIDE

33 NORTH 1/4 CORNER
CALC. PER W.S.D.O.T.
R.O.S. A/F#200505040052
SHEET 22 OF 26

CENTER 1/4 CORNER
FND. 60D NAIL IN
WOOD BRIDGE
0.3' B.G.

AMENDED
RECORD OF SURVEY

SITUATE IN A PORTION OF THE NORTHWEST 1/4 OF THE SOUTHEAST 1/4 OF SECTION 4, TOWNSHIP 34 NORTH,
RANGE 2 EAST, W.M., CITY OF ANACORTES, SAGITT COUNTY, WASHINGTON

EAST 1/4 CORNER
FND. 2" BRASS CAP
WITH PUNCH SET IN CONC.
FLUSH WITH THE GROUND
(SEE MONUMENT DETAIL 'A')

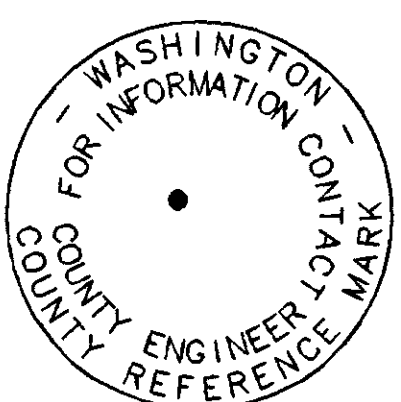
FOUND 2 1/2" IRON
PIPE WITH NAIL
0.4' B.G.

200810140092
Sagit County Auditor
10/14/2008 Page 4 of 6 1:32PM

SURVEY LEGEND

- EXISTING MONUMENT (SEE DESCRIPTION)
- SET #4 REBAR AND CAP PLS#35147
- EXISTING #5 REBAR AND CAP PLS#21520
- EXISTING #4 REBAR AND CAP PLS#19645
- EXISTING 2 1/2" IRON PIPE FILLED
WITH CONCRETE AND A NAIL IN MONUMENT
CASE

GRAPHIC SCALE
(use survey feet)
0 100 200
1 inch = 200 feet



MONUMENT
DETAIL 'C'

SOUTH 1/4 CORNER
FND. 3" BRASS CAP WITH DRILL HOLE
SET IN CONCRETE, IN 8" MON.
CASE, 0.1' BELOW ASPHALT
(SEE MONUMENT DETAIL 'C')

RECORD OF SURVEY

SAMISH INDIAN NATION

P.O. BOX 217

ANACORTES, WA 98221

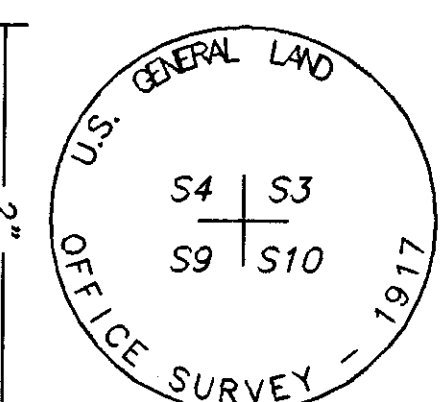
THOMPSON RD.
(#1571)

STEVENSON RD.
(#1540)

STATE ROUTE 20

SAMISH BAY RD.

MONUMENT
DETAIL 'B'



DRAWN BY: JND

CHECKED BY: PKB

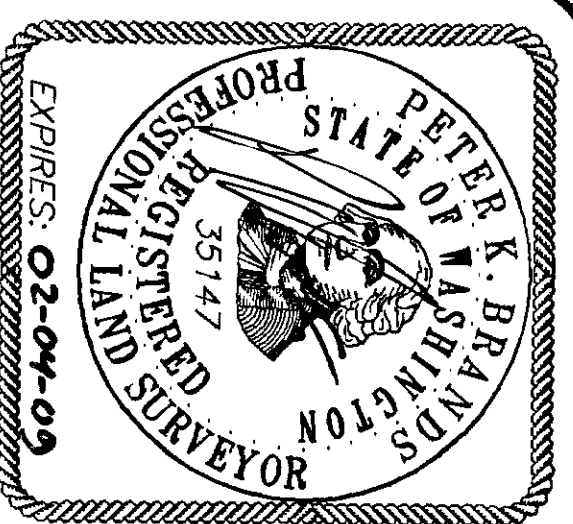
F.B.# 429.00

DATE: 10.14.08

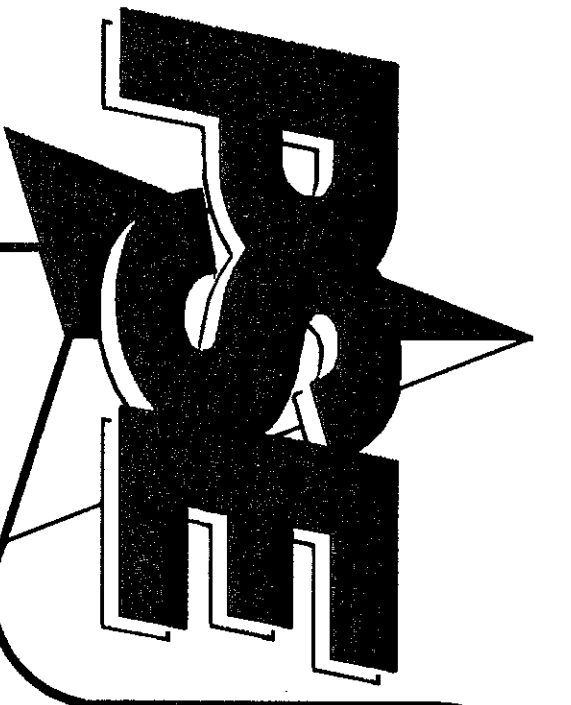
JOB NO. 2008135

SHEET NO. 4 OF 6

DWG. NO. samish_roas50a.dwg



10-12-09



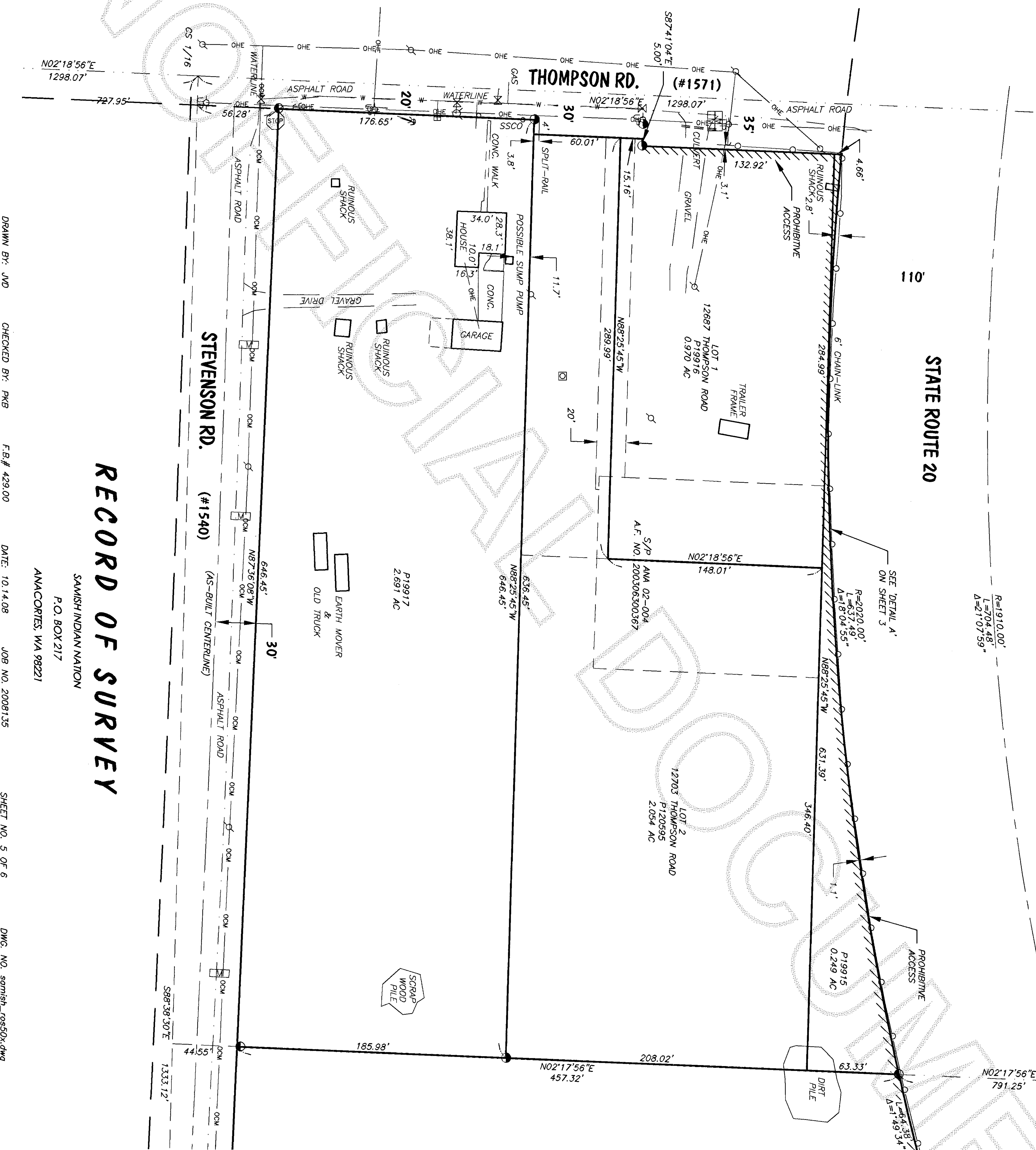
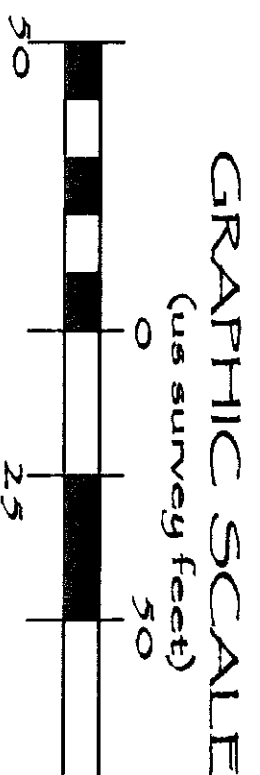
AMENDED RECORD OF SURVEY

SITUATE IN A PORTION OF THE NORTHWEST 1/4 OF THE SOUTHEAST 1/4 OF SECTION 4, TOWNSHIP 34 NORTH,
RANGE 2 EAST, W.M., CITY OF ANACORTES, SKAGIT COUNTY, WASHINGTON

200810140092
Skagit County Auditor
10/14/2008 Page 5 of 6 8:13:22PM

SURVEY LEGEND

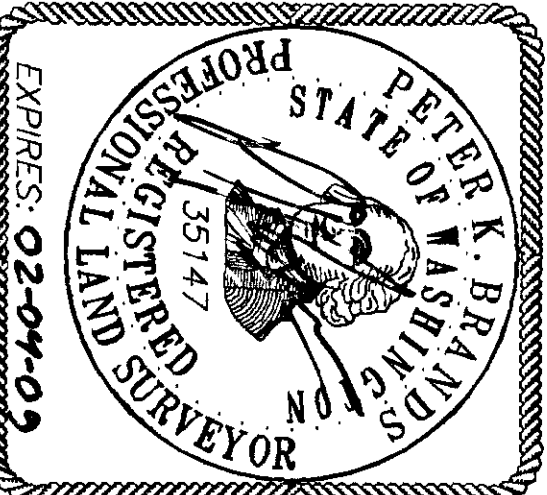
- EXISTING MONUMENT (SEE DESCRIPTION)
- SET #4 REBAR AND CAP PLS#35147
- EXISTING #5 REBAR AND CAP PLS#21520
- EXISTING #4 REBAR AND CAP PLS#19645
- EXISTING 2 1/2" IRON PIPE FILLED WITH CONCRETE AND A NAIL IN MONUMENT CASE
- EXISTING WATER METER
- EXISTING FIRE HYDRANT
- EXISTING WATER VALVE
- EXISTING SEWER CLEAN OUT
- EXISTING STOP SIGN
- EXISTING MAILBOX
- EXISTING POWER POLE
- EXISTING UTILITY POLE
- EXISTING GROUND GUY
- EXISTING GAS METER

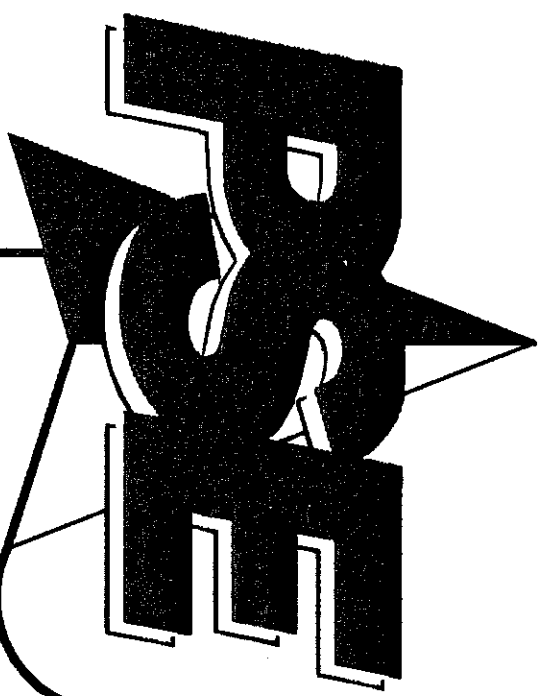


RECORD OF SURVEY

SAMISH INDIAN NATION
P.O. BOX 217
ANACORTES, WA 98221

DRAWN BY: JVD CHECKED BY: PKB F.B.# 429.00 DATE: 10.14.08 JOB NO. 2008135 SHEET NO. 5 OF 6 DWG. NO. samish_rossok.dwg





PACIFIC SURVEY & ENGINEERING INC EMAIL: pse@psurvey.com
1812 CORNWALL AVE, BELLINGHAM, WA 98225 PHONE: 671.7387 FAX: 671.4685 www.psurvey.com

AMENDED RECORD OF SURVEY

SITUATE IN A PORTION OF THE NORTHWEST 1/4 OF THE SOUTHEAST 1/4 OF SECTION 4, TOWNSHIP 34 NORTH,

RANGE 2 EAST, W.M., CITY OF ANACORTES, SKAGIT COUNTY, WASHINGTON

STATE ROUTE 20

SPIRAL CURVE
BEARING=N 73°36'08" E
L=179.98'

0.6' B.G.

110

N72°42'08"E

PROHIBITIVE
ACCESS

5' BARB WIRE

S88°25'45"E

223.19'

CENTERLINE DITCH

DRAINAGE EASEMENT A.F. #161314

0.3' W.

6.5' CHAIN-LINK

1288.17'

N02°16'55"E

76.61'

S88°48'E, 0.19'

TO FND, REBAR

PROHIBITIVE
ACCESS

P19915
0.249 AC

63.33'

N02°17'56"E

791.25'

6.33'

N74°40'30"E

56.65'

N73°32'25"E

55.71'

N72°50'30"E

72.82'

1.0'

6' CHAIN-LINK

COMPUTED SUB-CHORD BEARINGS & DISTANCES
ARE SHOWN FOR MATHEMATICAL CLOSURES OF
PARCEL 19919. THE ACTUAL R.O.W. LINE IS A
SPIRAL CURVE.

1.0'

N72°50'30"E

72.82'

N73°32'25"E

55.71'

N74°40'30"E

56.65'

6.33'

N02°17'56"E

791.25'

63.33'

P19915
0.249 AC

PROHIBITIVE
ACCESS

6.33'

N02°17'56"E

457.32'

N02°17'56"E

185.98'

44.55'

S88°38'30"E

1333.12'

402.46'

N87°36'08"W

402.46'

402.46'

402.46'

402.46'

402.46'

402.46'

402.46'

402.46'

402.46'

402.46'

402.46'

402.46'

402.46'

402.46'

402.46'

402.46'

402.46'

402.46'

402.46'

402.46'

402.46'

402.46'

402.46'

402.46'

402.46'

402.46'

402.46'

402.46'

402.46'

402.46'

402.46'

402.46'

402.46'

402.46'

402.46'

402.46'

402.46'

402.46'

402.46'

402.46'

402.46'

402.46'

402.46'

402.46'

402.46'

402.46'

402.46'

402.46'

402.46'

402.46'

402.46'

402.46'

402.46'

402.46'

402.46'

402.46'

402.46'

402.46'

402.46'

402.46'

402.46'

402.46'

402.46'

402.46'

402.46'

402.46'

402.46'

402.46'

402.46'

402.46'

402.46'

402.46'

402.46'

402.46'

402.46'

402.46'

402.46'

402.46'

402.46'

402.46'

402.46'

402.46'

402.46'

402.46'

402.46'

402.46'

402.46'

402.46'

402.46'

402.46'

402.46'

402.46'

402.46'

402.46'

402.46'

402.46'

402.46'

402.46'

402.46'

402.46'

402.46'

402.46'

402.46'

402.46'

402.46'

402.46'

402.46'

402.46'

402.46'

402.46'

402.46'

402.46'

402.46'

402.46'

402.46'

402.46'

402.46'

402.46'

402.46'

402.46'

402.46'

402.46'

402.46'

402.46'

402.46'

402.46'

402.46'

402.46'

402.46'

402.46'

402.46'

402.46'

402.46'

402.46'

402.46'

402.46'

402.46'

402.46'

402.46'

402.46'

402.46'

402.46'

402.46'

402.46'

402.46'

402.46'

402.46'

402.46'

402.46'

402.46'

402.46'

402.46'

402.46'

402.46'

402.46'

402.46'

402.46'

402.46'

402.46'

402.46'

402.46'

402.46'

402.46'

402.46'

402.46'

402.46'

402.46'

402.46'

402.46'

402.46'

402.46'

402.46'

402.46'

402.46'

402.46'

402.46'

402.46'

402.46'

402.46'

402.46'

402.46'

402.46'

402.46'

402.46'

402.46'

402.46'

402.46'

402.46'

402.46'

402.46'

402.46'

402.46'

402.46'

402.46'

402.46'

402.46'

402.46'

402.46'

402.46'

402.46'

402.46'

402.46'

402.46'

402.46'

402.46'

402.46'

402.46'

402.46'

402.46'

402.46'

402.46'

402.46'

402.46'

402.46'

402.46'

402.46'

402.46'

402.46'

402.46'

402.46'

402.46'

402.46'

402.46'

402.46'

402.46'

402.46'

402.46'

402.46'

402.46'

402.46'

402.46'

402.46'

402.46'

402.46'

402.46'

402.46'

402.46'