

RECORD OF SURVEY

SITUATE IN A PORTION OF THE NORTHEAST QUARTER OF THE NORTHWEST QUARTER OF SECTION 23,
TOWNSHIP 34 NORTH, RANGE 2 EAST, W.M., SKAGIT COUNTY, WASHINGTON

200809150049
Skagit County Auditor
9/15/2008 Page 1 of 2 8:46AM

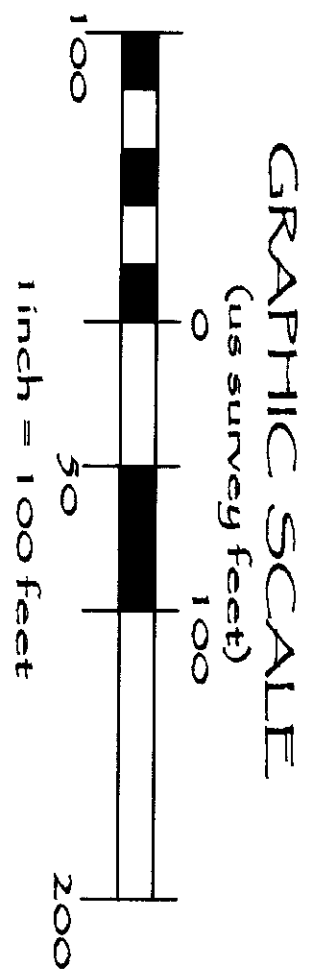
PARCEL DESCRIPTION

(PER LAND TITLE COMPANY OF SKAGIT COUNTY, ORDER NO. 130170-P)

BEGINNING AT THE SOUTHEAST CORNER OF THE NORTHEAST 1/4 OF THE NORTHWEST 1/4, SECTION 23,
TOWNSHIP 34 NORTH, RANGE 2 EAST, W.M.; THENCE WEST ALONG THE SOUTH LINE OF SAID FORTY A DISTANCE
OF 208 FEET 8 INCHES; THENCE NORTH A DISTANCE OF 208 FEET 8 INCHES; THENCE EAST A DISTANCE OF
208 FEET 8 INCHES TO THE EAST LINE OF SAID FORTY; THENCE SOUTH ALONG SAID EAST LINE A DISTANCE OF
SECTION 23, TOWNSHIP 34 NORTH, RANGE 2 EAST, W.M.
SITUATE IN THE COUNTY OF SKAGIT, STATE OF WASHINGTON.

SURVEY LEGEND

● = EXISTING MONUMENT (SEE HISTORY
AND DESCRIPTION, THIS SHEET)
○ = EXISTING QUARTER SECTION CORNER



NORTHWEST 1/16 CORNER

FEBRUARY 4, 1874 G.L.O. DEPUTY SURVEYOR LEWIS VAN VLEET ORIGINAL SURVEY
(VOLUME R-36 PAGE 47) SET A POST 3 INCHES FLATTENED, 4 FEET LONG, 18 INCHES
IN THE GROUND FOR 1/16TH SEC. COR.

JULY 25, 1883 G.L.O. SURVEYOR N. B. STEWART SET A 4"x4" POST (VOLUME R-61,
PG 44).

AUGUST THROUGH DECEMBER 1917, G.L.O. DEPUTY SURVEYOR GEORGE CAMPBELL
CONDUCTED A DEPENDENT RESURVEY (VOLUME I-4, PG 92 AND 93) SET A IRON POST
WITH A BRASS CAP MARKED "W 1/16 S23 1917."

APRIL 27, 1994 LAND CORNER RECORD AF# 9404220033, ON MARCH 11, 1994, IN
FIELD BOOK 493, AT PAGE 43, A 1-INCH IRON PIPE WITH A 1/2 INCH IRON ROD
ALONGSIDE A STEEL FENCE POST WAS FOUND. THE NORTH 1/16 OF SECTION 23 WAS
FOUND (SEE RECORD OF SURVEY IN BOOK 13 OF SURVEYS AT PAGE 55) ON JULY 23,
1993, THE NORTH 1/16 BETWEEN 22/23 WAS FOUND ON MARCH 16, 1994, FB 493,
PG. 43, THE CALCULATED POSITION BY SINGLE PROPORTION WAS FOUND TO BE NORTH
32° WEST, 27.9 FEET FROM THE FOUND 1 INCH I.P. NO PUBLIC RECORD WAS FOUND
ON THE ESTABLISHMENT OF THE ONE-INCH I.P. A VERY SIMILAR ONE-INCH I.P. AND
STEEL FENCE POST WERE FOUND IN THE AREA OF THE CENTER OF THE NORTHWEST
QUARTER OF THE NORTHWEST QUARTER. THE NORTHWEST 1/16 CORNER WAS
ESTABLISHED BY SINGLE PROPORTION BETWEEN THE FOUND 1/16 CORNER EAST AND
WEST AS THERE WAS NO ORIGINAL EVIDENCE FOUND.

JUNE 9, 1994 AF# 940609002, PERFORMED BY LEONARD, BOUDINOT & SKODJE, SET
REBAR AND CAP AT SINGLE PROPORTION (EAST/WEST SINGLE PROPORTION, 3 MILE
METHOD). FOUND 1 INCH IRON PIPE WITH STEEL FENCE POST ALONGSIDE AND 1/2
INCH IRON ROD AND FLAG LINE HEADING EASTERLY (SAID PIPE AS DRAFTED IS NOT
ACCEPTED).

AUGUST 2008 PACIFIC SURVEYING AND ENGINEERING FOUND A #4 REBAR WITH YELLOW
PLASTIC CAP LEONARD 8992 (ACCEPTED) AND A 1-1/4 INCH OUTSIDE DIAMETER PIPE,
NO CAP 1/3 FEET ABOVE GRADE AND A 4 FOOT WOOD POST ON THE NORTH SIDE
(NOT ACCEPTED).

SECTION 23
NORTHWEST 1/16 CORNER
1086.88'
S89°41'19"E
GLO (1883) 19.45 CH.
1293.56'

CENTER-NORTH 1/16 CORNER

FEBRUARY 5, 1874 G.L.O. DEPUTY SURVEYOR LEWIS VAN VLEET ORIGINAL SURVEY
(VOLUME R-36 PAGE 49 AND 50) SET A POST 3 INCHES FLATTENED, 4 FEET LONG,
18 INCHES IN THE GROUND FOR 1/16TH SEC. COR.

JULY 25, 1883 G.L.O. SURVEYOR N. B. STEWART SET A 4"x4" WOOD POST (VOLUME
R-61, PG 44).

MAY 9, 1980, AF# 8005230015, PERFORMED BY SKAGIT SURVEYORS, SET CONCRETE
MONUMENT I.S. #16244 (THIS MAP DOES NOT INDICATE HOW THE POSITION WAS
REESTABLISHED, HOWEVER, THROUGH E-MAIL CORRESPONDENCE WITH JOHN ABENROTH,
PLS OF SKAGIT SURVEYORS, INC. CONFIRMED THE MONUMENT WAS SET AT
PROPORTIONATE DISTANCE BETWEEN THE N 1/16TH SECTION 23/24 AND N 1/16TH
SECTION 22/23).

AUGUST 24, 1992, AF# 9208240082, PERFORMED BY LEONARD, BOUDINOT & SKODJE,
FOUND CONCRETE MONUMENT WITH BRASS CAP.

JUNE 9, 1994 AF# 940609002, PERFORMED BY LEONARD, BOUDINOT & SKODJE,
FOUND CONCRETE MONUMENT WITH BRASS CAP.

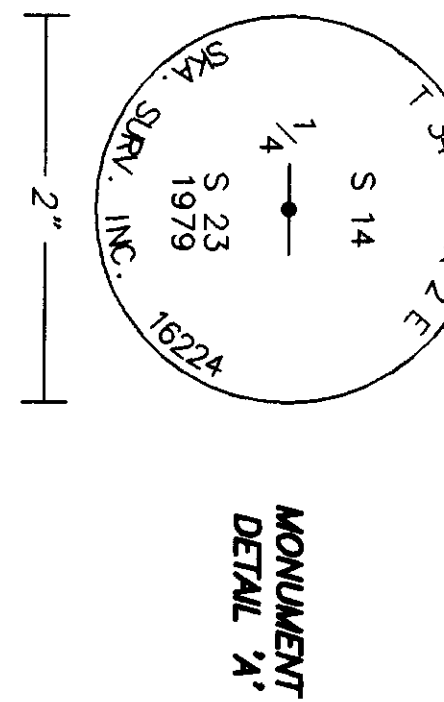
AUGUST 2008, PACIFIC SURVEYING AND ENGINEERING FOUND A 4"x4" CONCRETE
MONUMENT WITH 2 INCH BRASS CAP MARKED WITH APPROPRIATE STAMPING AND
SKAGIT SURVEYING INCORPORATED WITH LICENSE NUMBER 16244, 0.2 ABOVE GRADE
(ACCEPTED). SET A 6 FOOT CARSONITE POST 2 FEET NORTH OF FOUND MONUMENT.

SECTION 23
NORTH 1/4 CORNER
(SEE MONUMENT DETAIL A.)

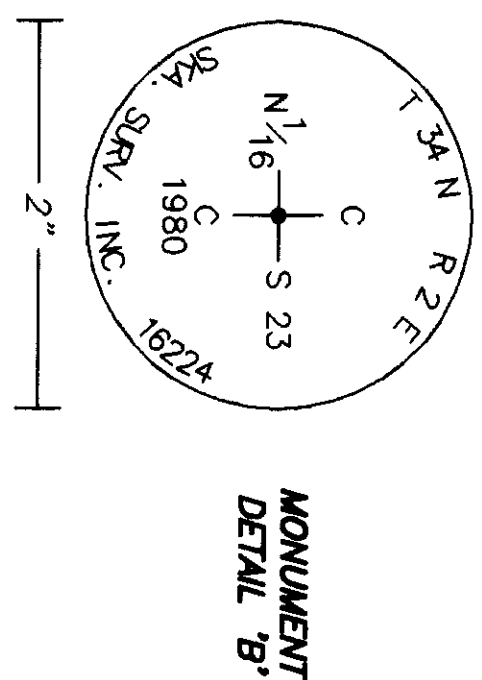


1127.75'
1336.43'
S00°56'47"W
208.68'
BASIS OF BEARINGS
GLO (1883) 20.60 CH.
S00°56'47"W
208.68'
S89°41'19"E
208.68'
208.68'

SECTION 23
CENTER-NORTH
1/16 CORNER
(SEE MONUMENT
DETAIL B.)
CALC. BEARING FROM
R.O.S. AF# 8005230015
S89°37'13"E
1292.48' (RECORD)
S00°57'47"W
1336.69'



NORTH 1/4 CORNER
JANUARY 1874 G.L.O. DEPUTY SURVEYOR LEWIS VAN VLEET ORIGINAL SURVEY (VOLUME
R-36 PAGE 49) SET A POST 3 INCHES FLATTENED, 4 FEET LONG, 18 INCHES IN THE
GROUND FOR 1/4 COR.
JULY 25, 1883 G.L.O. SURVEYOR N. B. STEWART SET A NEW 5"x4" POST (VOLUME
R-61, PG 46).
AUGUST THROUGH DECEMBER 1917, G.L.O. DEPUTY SURVEYOR GEORGE CAMPBELL
CONDUCTED A DEPENDENT RESURVEY (VOLUME I-4, PG 49) SET A IRON POST WITH A
BRASS CAP MARKED "1/4 S14 S23 1917" FROM STUB OF OLD CEDAR TREE, PLAINLY
MARKED.
MAY 9, 1980, AF# 8005230015, PERFORMED BY SKAGIT SURVEYORS, FOUND I.P. AND
LATH SET CONCRETE MONUMENT I.S. #16244.
NOVEMBER 17, 1980 AF# 8011170056 PERFORMED BY SKAGIT SURVEYORS INC., FOUND
MONUMENT.
DECEMBER 30, 1982 AF# 8212300015 PERFORMED BY RICHARD JUDY, FOUND
CONCRETE MONUMENT WITH BRASS DISK STAMPED "SKA. SURV. INC. 16244."
MARCH 6, 2006 AF# 200603060015 PERFORMED BY THATCHER & MORRISON, INC.,
FOUND CONCRETE MONUMENT.
AUGUST 2008, PACIFIC SURVEYING AND ENGINEERING FOUND A 4"x4" CONCRETE
MONUMENT WITH 2 INCH BRASS CAP MARKED WITH APPROPRIATE STAMPING AND SKAGIT
SURVEYING INCORPORATED WITH LICENSE NUMBER 16244, 0.1 ABOVE GRADE
(ACCEPTED).



RECORD OF SURVEY

SWINOMISH INDIAN TRIBAL COMMUNITY

P.O. BOX 817
LA CONNER, WA 98257

SURVEYOR'S CERTIFICATE

This map correctly represents a survey made by me or
under my direction in conformance with the requirements
of the Survey Recording Act at the request of Swinomish
Indian Tribal Community in August 2008.

Certificate No.: 35147

DWG. NO. shakerchurch_20k.dwg

SHEET NO. 1 OF 2

JOB NO. 2008094

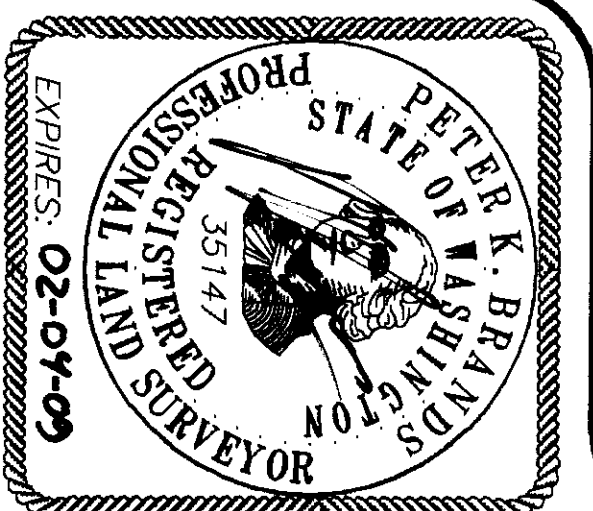
DATE: 09/10/08

F.B.# 11704

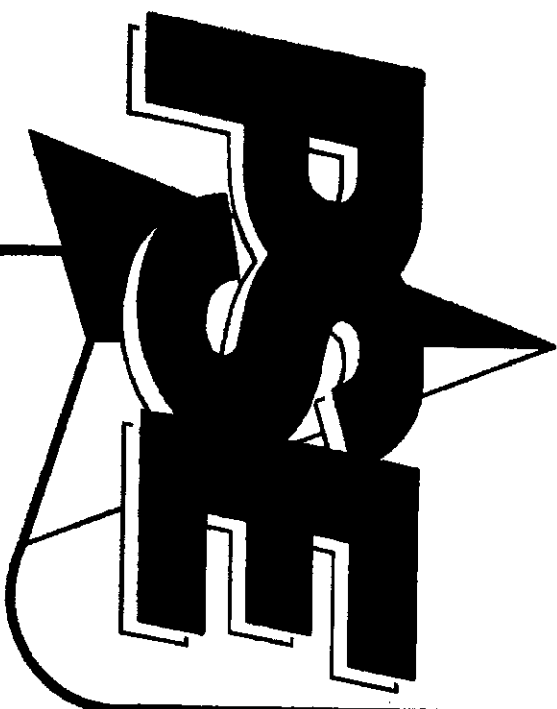
CHECKED BY: NB/PB

DRAWN BY: SUN

AUDITOR'S CERTIFICATE
Filed for record this 15 day of Sept. 2008 at
in book — of surveys at page — at the request of
PACIFIC SURVEYING AND ENGINEERING SERVICES INC.
County Auditor



9-11-08



RECORD OF SURVEY

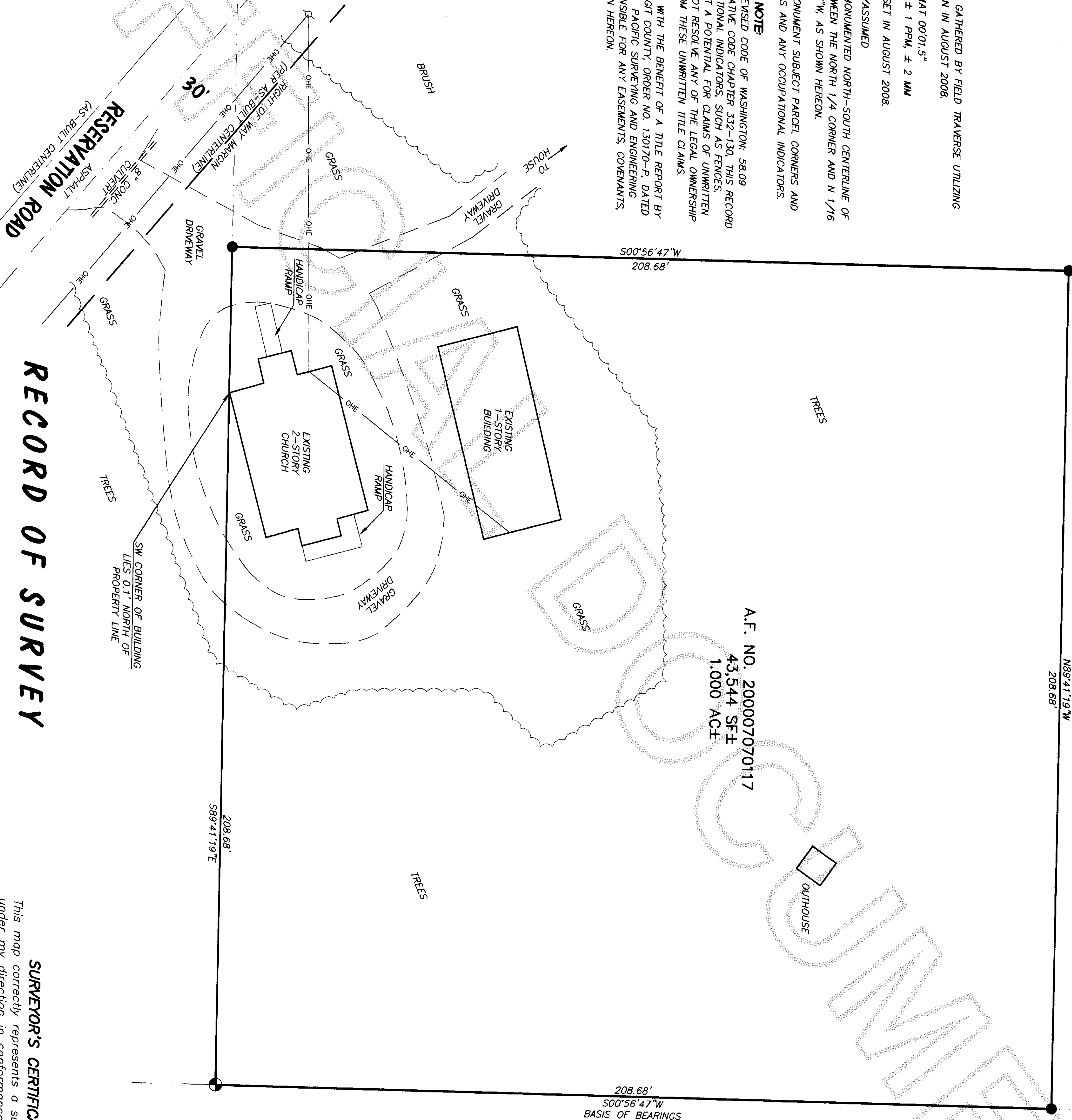
SITUATE IN A PORTION OF THE NORTHEAST QUARTER OF THE NORTHWEST QUARTER OF SECTION 23,
TOWNSHIP 34 NORTH, RANGE 2 EAST, W.M., SKAGIT COUNTY, WASHINGTON

N89°41'19"W
208.68'

200809150049
Skagit County Auditor
9/15/2008 Page 2 of 2 8:46AM

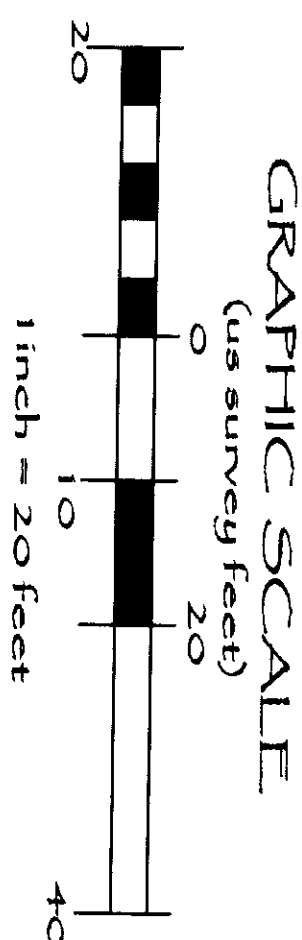
SURVEY NOTES

- 1) DATA FOR THIS SURVEY WAS GATHERED BY FIELD TRAVERSE UTILIZING ELECTRONIC DATA COLLECTION IN AUGUST 2008.
- 2) EQUIPMENT USED: THEOMAT 00'01.5" EDM. ± 1 PPM, ± 2 MM
- 3) MONUMENTS RECOVERED OR SET IN AUGUST 2008.
- 4) HORIZONTAL DATUM: LOCAL/ASSUMED
- 5) BASIS OF BEARINGS: THE MONUMENTED NORTH-SOUTH CENTERLINE OF SECTION 23, T34N, R2E BETWEEN THE NORTH 1/4 CORNER AND N 1/16 CORNER, BEARING S00°56'47"W, AS SHOWN HEREON.
- 6) PURPOSE OF SURVEY: TO MONUMENT SUBJECT PARCEL CORNERS AND DEPICT EXISTING CONDITIONS AND ANY OCCUPATIONAL INDICATORS.
- 7) OCCUPATIONAL INDICATOR NOTE
IN ACCORDANCE WITH THE REVISED CODE OF WASHINGTON, §8.09 AND WASHINGTON ADMINISTRATIVE CODE CHAPTER 332-130, THIS RECORD OF SURVEY DEPICTS OCCUPATIONAL INDICATORS, SUCH AS FENCES, THESE INDICATORS REPRESENT A POTENTIAL FOR CLAIMS OF UNWRITTEN TITLE. THIS SURVEY DOES NOT RESOLVE ANY OF THE LEGAL OWNERSHIP ISSUES THAT MAY ARISE FROM THESE UNWRITTEN TITLE CLAIMS.
- 8) THIS SURVEY WAS COMPLETED WITH THE BENEFIT OF A TITLE REPORT BY LAND TITLE COMPANY OF SKAGIT COUNTY, ORDER NO. 130170-P, DATED JUNE 24, 2008 AT 8:00 A.M. PACIFIC SURVEYING AND ENGINEERING SERVICES, INC. IS NOT RESPONSIBLE FOR ANY EASEMENTS, COVENANTS, AND RESTRICTIONS NOT SHOWN HEREON.



SURVEY LEGEND

- = EXISTING MONUMENT (SEE HISTORY AND DESCRIPTION SHEET 1 OF 2)
- = SET REAR AND CAP PLS# 35147
- = EXISTING POWER POLE
- = EXISTING OVERHEAD ELECTRIC LINES
- = EXISTING EDGE OF TREES



RECORD OF SURVEY

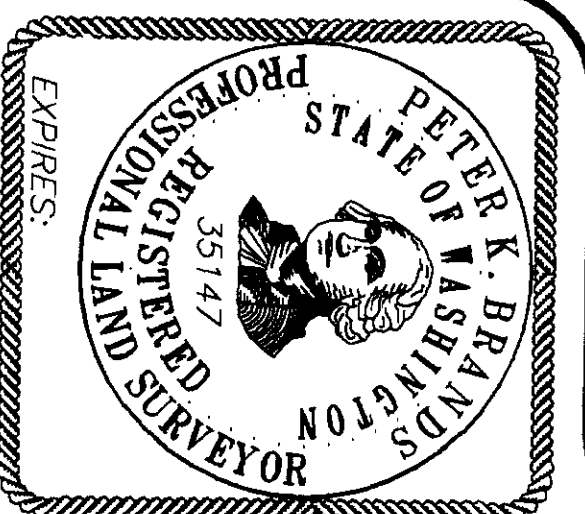
SWINOMISH INDIAN TRIBAL COMMUNITY

P.O. BOX 817
LA CONNER, WA 98257

SURVEYOR'S CERTIFICATE

This map correctly represents a survey made by me or under my direction in conformance with the requirements of the Survey Recording Act at the request of Swinomish Indian Tribal Community in August 2008.

Certificate No.: 35147



DRAWN BY: S.J.N.

CHECKED BY: NB/PB

F.B.# 117.04

DATE: 09/10/08

JOB NO. 2008094

SHEET NO. 2 OF 2

DWG. NO. shdetchurch_20x.dwg