

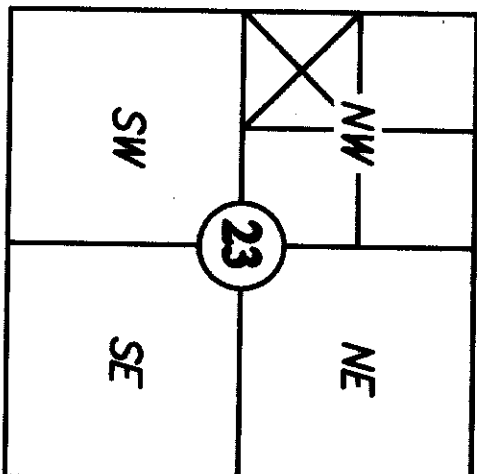
SURVEYOR'S CERTIFICATE
THIS MAP CORRECTLY REPRESENTS A SURVEY MADE BY ME OR UNDER MY DIRECTION IN CONFORMANCE WITH THE REQUIREMENTS OF THE SURVEYING ACT AT THE REQUEST OF:
Donald Peterson IN 597 2008
CERTIFICATE NO. 28023



NORTHWEST DATUM & DESIGN
CIVIL ENGINEERING AND SURVEYING SOLUTIONS

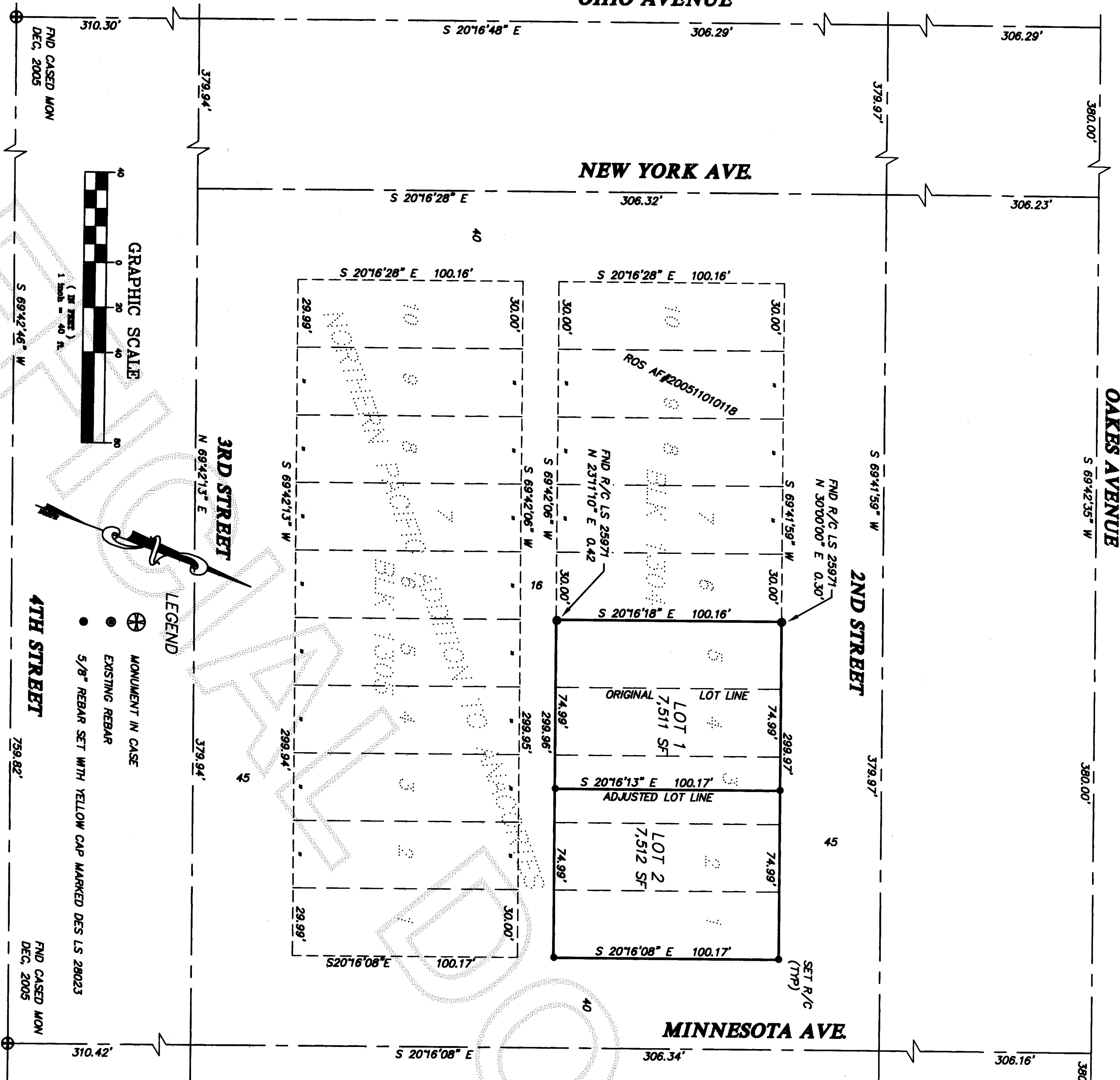
1128 E. FAIRHAVEN AVE
BURLINGTON, WASHINGTON 98233
PH: (360) 755-0434 FAX: (360) 755-0464

RECORD OF SURVEY
SURVEY in a portion of the SW 1/4 of the NW 1/4 of
Section 23, T. 35 N., R. 1 E. WM
for
DONALD PETERSON
in Anacortes, Washington

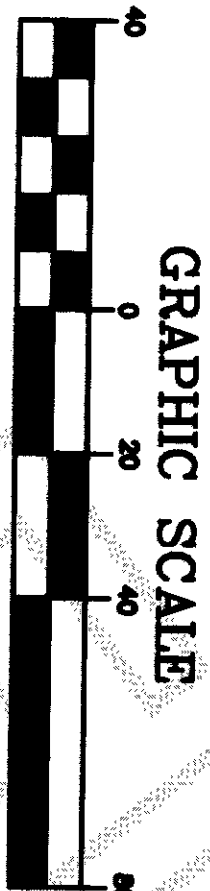


Section 23, T. 35 N., R. 1 E.
Skagit County, Washington

PROJECT 05180a
DRAWING 05180a.dwg
DRAWN BY bz
CHECKED BY des
DATE Sept., 2008
SHEET 1 OF 1



SURVEY INSTRUMENTATION
TRIMBLE S-6
SERIAL 92710971, STD DEV 3",
EDM ± (3MM + 2PPM),
SURVEYING PROCEDURE
FIELD TRAVERSE
LINEAR AND ANGULAR MEASUREMENTS MEET OR
EXCEED STANDARDS SET IN WAC 332-130-080



LEGEND

- MONUMENT IN CASE
- EXISTING REBAR
- 5/8" REBAR SET WITH YELLOW CAP MARKED DES LS 28023

SURVEY NOTES
THE ISSUE BEING ADDRESSED BY THIS SURVEY AND THE DISPARITY OF HISTORIC LAYOUTS OF BLOCKS BY PREVIOUS SURVEYS, IS A 10 FT. EXCESS THAT WOULD BE PLACED IN THE NORTH/SOUTH LENGTH OF STREETS FOR BLOCKS 1106, 1107, 1306 AND 1307, AND THE 0.5 FT. LAYOUT OF STREETS WEST OF HARTFORD, CREATED BY NOT INCLUDING THE MONUMENT LOCATED AT OAK STREET AND LOUISIANA.

THE STREET INTERSECTIONS ARE ESTABLISHED AS FOLLOWS:

- CENTER LINE OF OAK STREET IS ESTABLISHED BY BEST FIT OF MONUMENTS AT FLORIDA, HARTFORD AND LOUISIANA.
- STREET INTERSECTIONS WEST OF LOUISIANA ARE LAYED OUT BY PLAT DISTANCES.
- STREET INTERSECTIONS ARE ESTABLISHED FOR OHIO, NEW YORK AND MINNESOTA BY RATIO AND PROPORTION ON OHIO FROM THE MONUMENTS AT OHIO AND 4TH TO THE PLATTED STREET INTERSECTION ON OAK STREET.
- ALIGNMENT OF 2ND STREET IS ESTABLISHED BETWEEN LEONARD/BOUDINOT R/C NEAR INTERSECTION OF 2ND AND JACKSON AND RATIO AND PROPORTIONED DISTANCE AT OHIO AND 2ND.
- STREET INTERSECTIONS AND ALIGNMENT FOR MINNESOTA IS ESTABLISHED BETWEEN THE MONUMENT AT MINNESOTA AND 4TH, THE PLAT DISTANCE OF OAK STREET AND THE INTERSECTION OF 2ND STREET.

LEGAL DESCRIPTION

EXISTING LOT 1
LOT 5, BLOCK 1304, "NORTHERN PACIFIC ADDITION TO THE CITY OF ANACORTES" ACCORDING TO THE PLAT THEREOF RECORDED IN VOLUME 2 OF PLATS, PAGE 9 THROUGH 11, RECORDS OF SKAGIT COUNTY, WASHINGTON.

EXISTING LOT 2
LOTS 1 THROUGH 4, BLOCK 1304, "NORTHERN PACIFIC ADDITION TO THE CITY OF ANACORTES" ACCORDING TO THE PLAT THEREOF RECORDED IN VOLUME 2 OF PLATS, PAGE 9 THROUGH 11, RECORDS OF SKAGIT COUNTY, WASHINGTON.

ADJUSTED LOT 1
LOTS 1 AND 2 AND THE EAST HALF OF LOT 3, BLOCK 1304, "NORTHERN PACIFIC ADDITION TO THE CITY OF ANACORTES" ACCORDING TO THE PLAT THEREOF RECORDED IN VOLUME 2 OF PLATS, PAGE 9 THROUGH 11, RECORDS OF SKAGIT COUNTY, WASHINGTON.

ADJUSTED LOT 2
LOTS 4 AND 5 AND THE WEST HALF OF LOT 3, BLOCK 1304, "NORTHERN PACIFIC ADDITION TO THE CITY OF ANACORTES" ACCORDING TO THE PLAT THEREOF RECORDED IN VOLUME 2 OF PLATS, PAGE 9 THROUGH 11, RECORDS OF SKAGIT COUNTY, WASHINGTON.

AUDITOR'S CERTIFICATE
200809110081
Skagit County Auditor
9/11/2008 Page 1 of 1 2:38PM
J. Hounquist
COUNTY AUDITOR OR DEPUTY AUDITOR