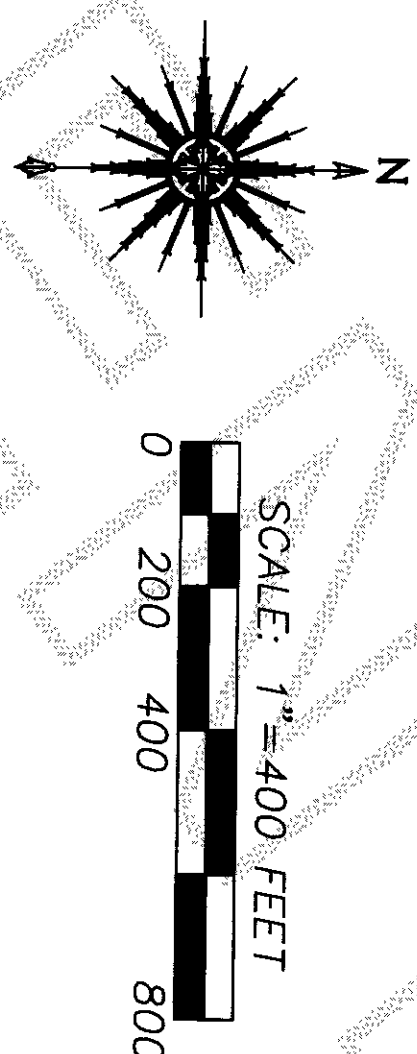


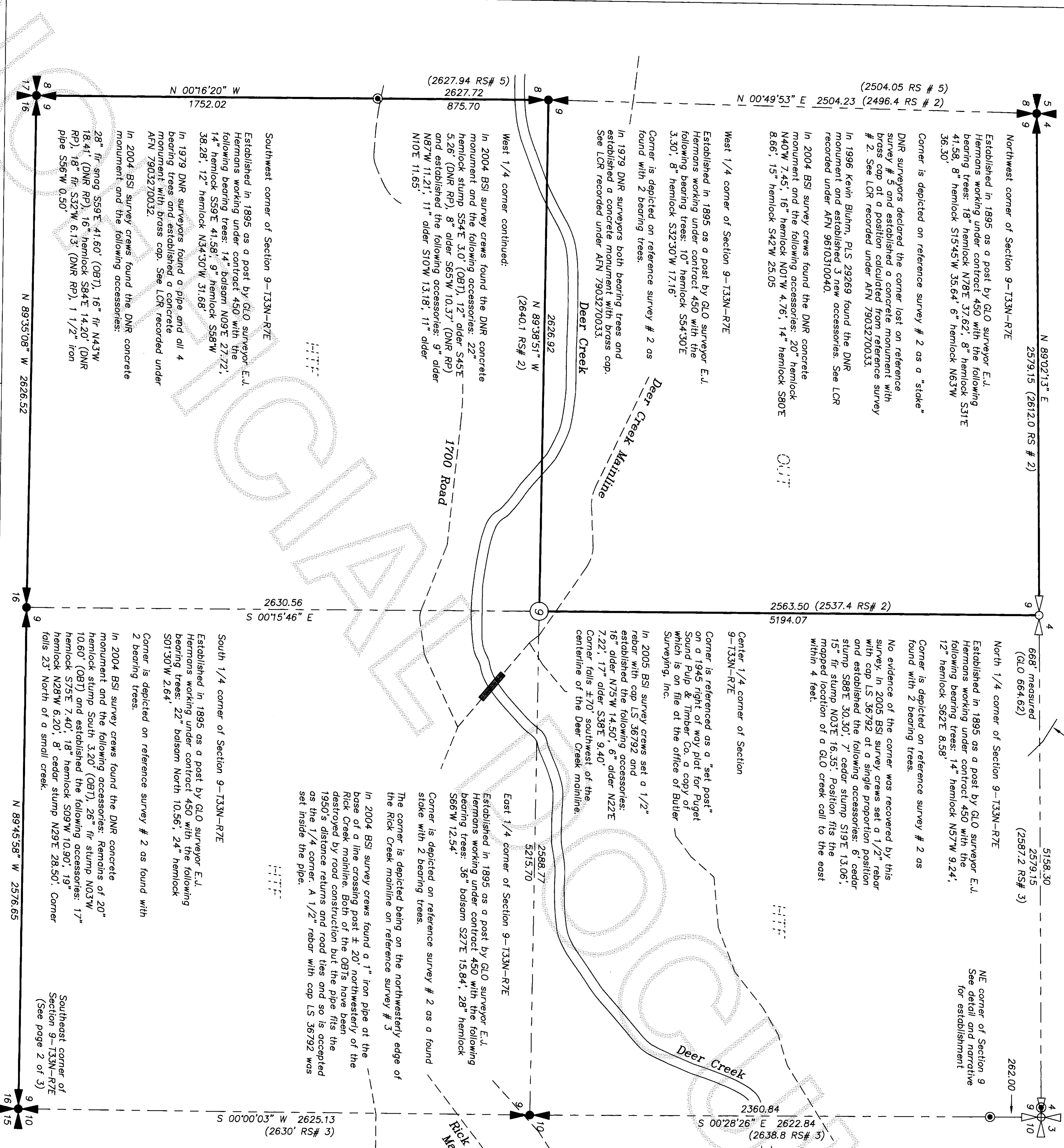
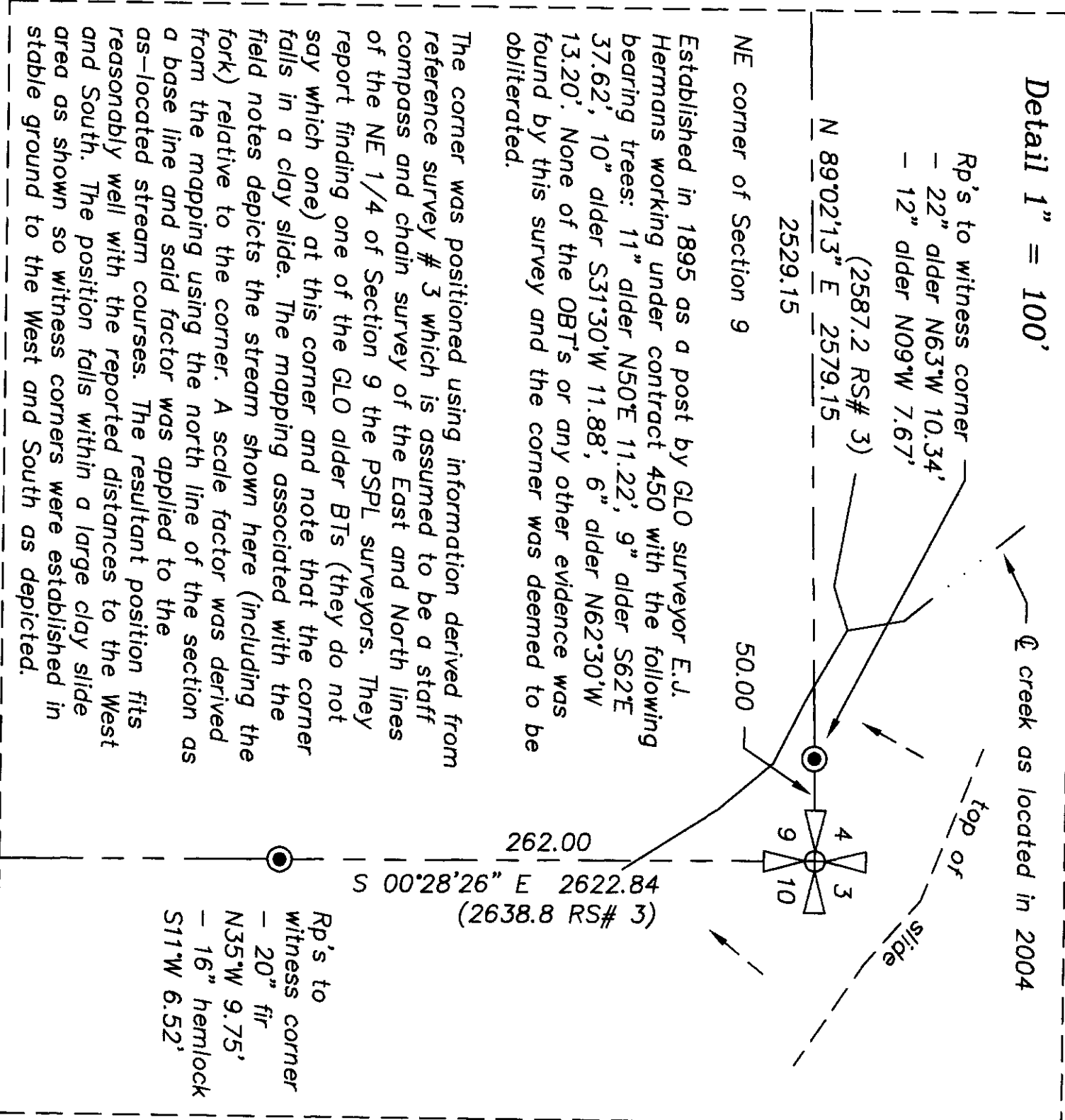
Section 9, Township 33 North, Range 7 East, W.M.
in Skagit County, Washington
(Page 1 of 3 Pages)



Basis of Bearings: True bearings derived from solar observation near the southeast corner of Section 9, T33N, R7E, W.M.

- Reference Surveys:
- 1) GLO survey of Township 33 North, Range 7 East, W.M. (1895)
 - 2) Puget Sound Pulp & Timber Co. Right of Way plat in Section 9, T33N, R7E, W.M. (1945) a copy of which was obtained from the office of Hampton Tree Farms in Mt. Vernon, WA.
 - 3) C.B. Lumber & Shingle Co./Skagit Logging Co. survey of Section 9, T33N, R7E, W.M. (FB 284, Pg. 37-41) and associated mapping dated 1/1/1950. Copies of which were obtained from the office of Hampton Tree Farms in Mt. Vernon, WA.
 - 4) Georgia Pacific survey of portions of Section 16, T33N, R7E, W.M. (1934) contained in GP FB 181, Copies of which were obtained from the office of Hampton Tree Farms in Mt. Vernon, WA.
 - 5) DNR final map # 335 in Sections 7 & 8, T33N, R7E, W.M. (1979)
 - 6) Georgia Pacific survey of the North 1/2 of Section 21, T33N, R7E, W.M. (1983) contained in GP FB 365. Copies of which were obtained from the office of Hampton Tree Farms in Mt. Vernon, WA.
 - 7) Land Corner Records as referenced.

Method of Survey: Closed loop field traverses using a Sokkia SET3E (0000.05") total station. This survey meets or exceeds precision requirements as set forth in WAC 332-130-090.



Certificate Number: _____

Auditor's Certificate
Filed for record this 2 day of April, 2008
at 8:32AM in Book _____ of _____ at Page _____
At the request of Butler Surveying, Incorporated

Surveyor's Certificate

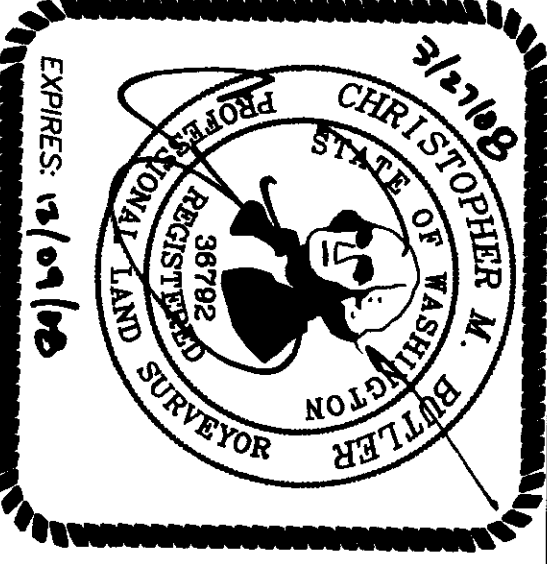
This map correctly represents a survey made by me or under my direction in conformance with the requirements of the Survey Recording Act at the request of Hampton Tree Farms in March of 2008.

Record of Survey Description

The south line, the south half of the west line and the north, south and east lines of the Northeast Quarter all in Section 9, Township 33 North, Range 7 East, W.M. in Skagit County, WA.

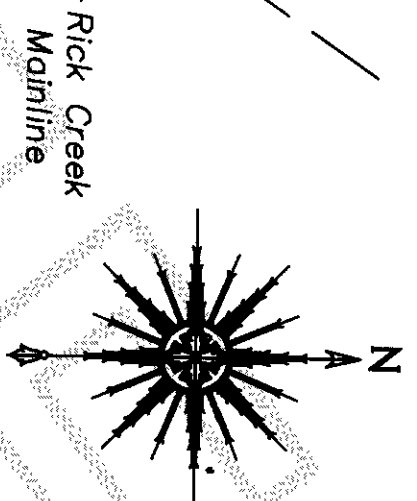
BUTLER SURVEYING INC.
475 NW CHEHALIS AVENUE
P.O. BOX 149, CHEHALIS, WA 98632
360/748-8803

Drawn C. Butler Date 03-25-08
Checked CS Job No. 03-140
Scale 1" = 400' Sheet 1 of 3



Section 16, Township 33 North, Range 7 East, W.M.
in Skagit County, Washington
(Page 2 of 3 Pages)

SCALE: 1"=400 FEET
0 200 400 800



Basis of Bearings: True bearings derived from solar observation near the southeast corner of Section 9, T33N, R7E, W.M.

- Found as noted
Set 1/2" rebar and cap LS 36792
Set 1/2" rebar and cap LS 36792 (line only)
Calculated position
Blazed and painted property line

Reference Surveys:

- 1) GLO survey of Township 33 North, Range 7 East, W.M. (1895)
- 2) Puget Sound Pulp & Timber Co. Right of Way plat in Section 9, T33N, R7E, W.M. (1945) a copy of which was obtained from the office of Hampton Tree Farms in Mt. Vernon, WA.
- 3) C.B. Lumber & Shingle Co./Skagit Logging Co. survey of Section 9, T33N, R7E, W.M. (PB 284, Pg 37-41) and associated mapping dated 1/1/1950. Copies of which were obtained from the office of Hampton Tree Farms in Mt. Vernon, WA.
- 4) Georgia Pacific survey of portions of Section 16, T33N, R7E, W.M. (1954) contained in GP FB 181. Copies of which were obtained from the office of Hampton Tree Farms in Mt. Vernon, WA.
- 5) DNR final map # 335 in Sections 7 & 8, T33N, R7E, W.M. (1929)
- 6) Georgia Pacific survey of the North 1/2 of Section 21, T33N, R7E, W.M. (1983) contained in GP FB 365. Copies of which were obtained from the office of Hampton Tree Farms in Mt. Vernon, WA.
- 7) Land Corner Records as referenced.

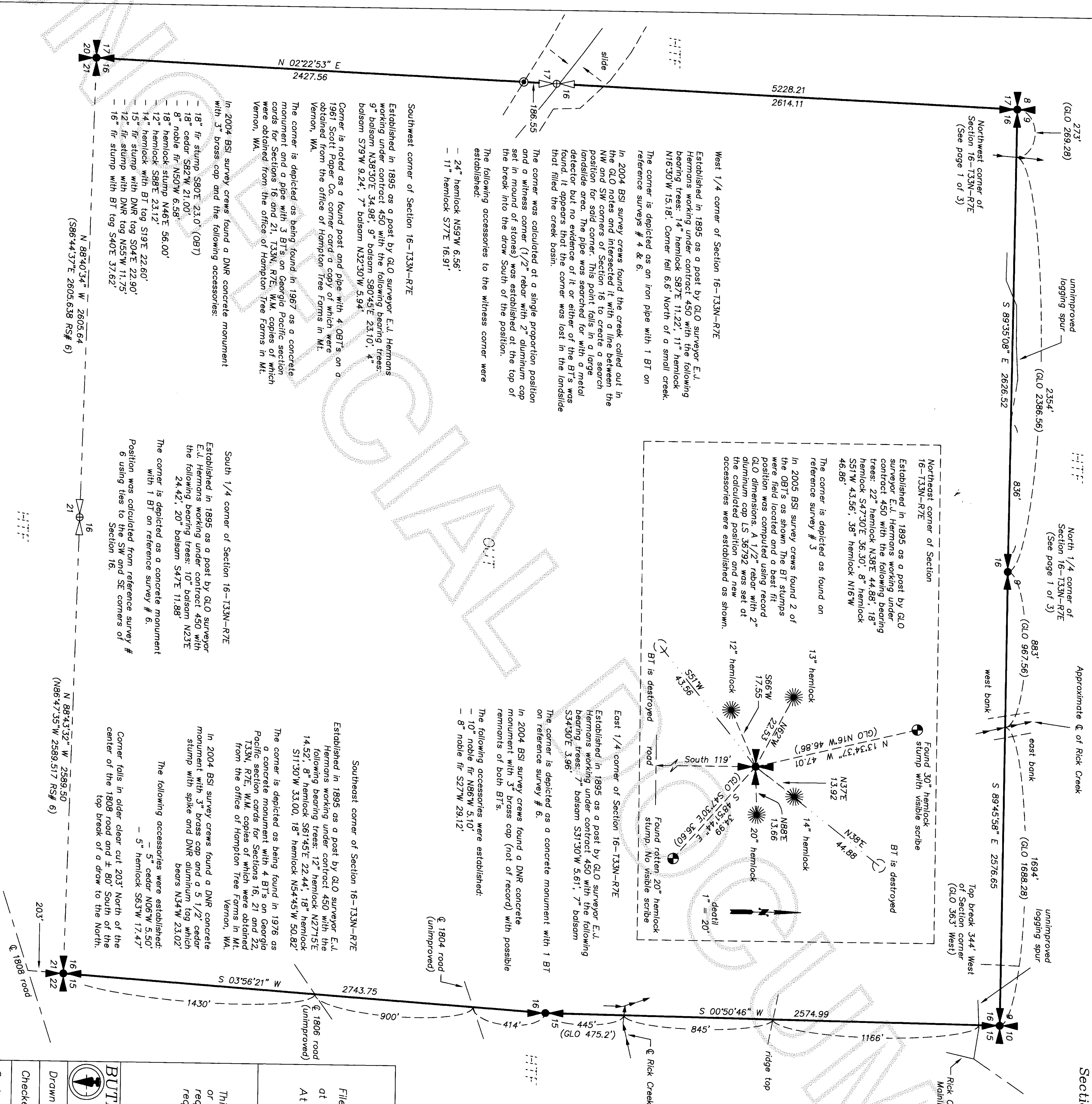
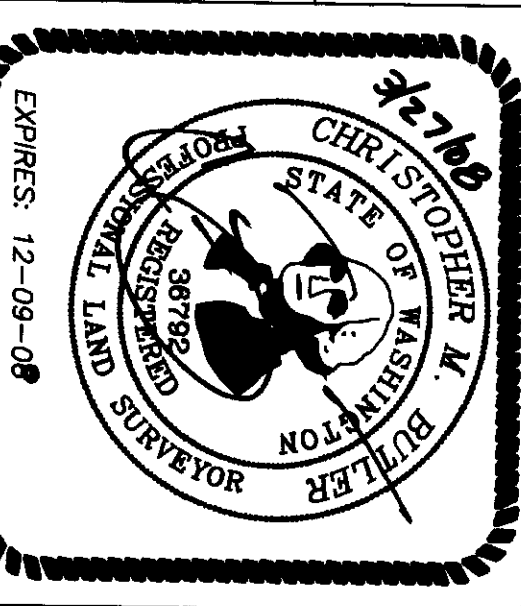
Method of Survey: Closed loop field traverses using a Sokkia SET3E (000005) total station. This survey meets or exceeds precision requirements as set forth in WAC 352-150-090.

Certificate Number: _____
Auditor's Certificate
Filed for record this 2 day of April, 2008
at 8:32AM. In Book _____ of _____ at Page _____
At the request of Butler Surveying, Incorporated
by: J. J. J. J. J. Auditor
County Auditor
Surveyor's Certificate
This map correctly represents a survey made by me or under my direction in conformance with the requirements of the Survey Recording Act at the request of Hampton Tree Farms in March of 2008.

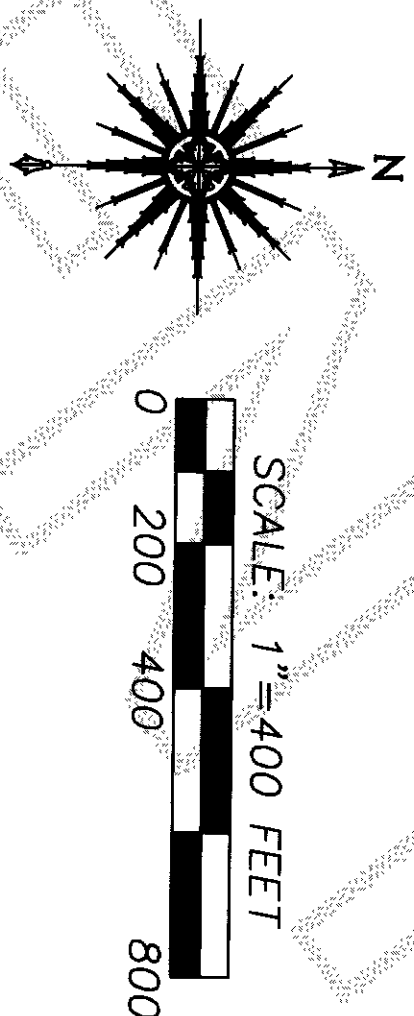
Lic# 36792

BUTLER SURVEYING INC.
475 NW CHEHALIS AVENUE
P.O. BOX 149, CHEHALIS, WA 98532
360/748-8803

Drawn C. Butler Date 03-25-08
Checked CB Job No. 03-140
Scale 1" = 400' Sheet 2 of 3



Section 21, Township 33 North, Range 7 East, W.M.
in Skagit County, Washington
(Page 3 of 3 Pages)



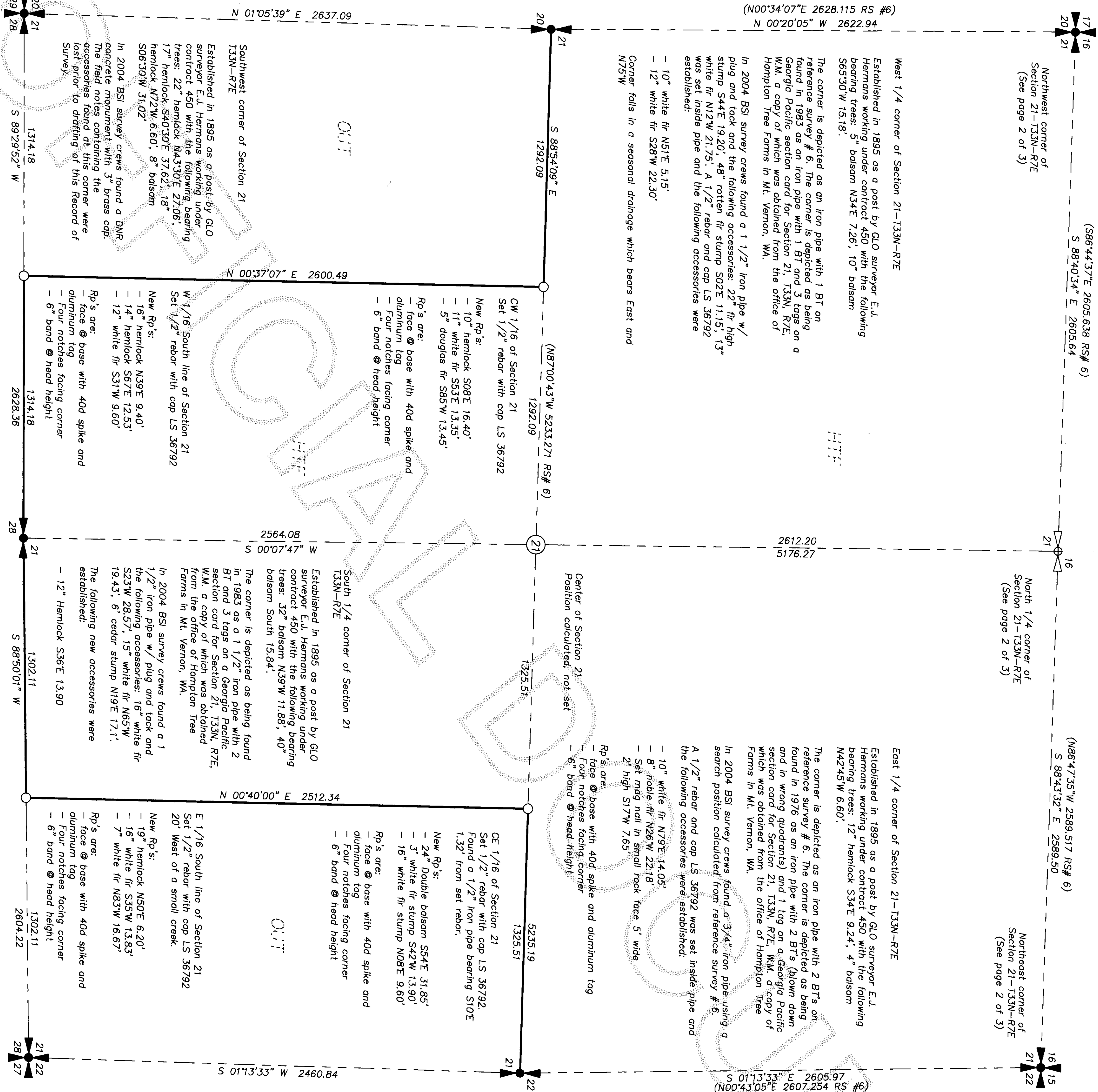
Basis of Bearings: True bearings derived from solar observation near the southeast corner of Section 9, T33N, R7E, W.M.

- Legend:
- Found as noted
 - Set 1/2" rebar and cap LS 36792
 - Set 1/2" rebar and cap LS 36792 (line only)
 - Calculated position
 - Blazed and painted property line

Reference Surveys:

- 1) GLO survey of Township 33 North, Range 7 East, W.M. (1895)
- 2) Puget Sound Pulp & Timber Co. Right of Way plot in Section 9, T33N, R7E, W.M. (1945) a copy of which was obtained from the office of Hampton Tree Farms in Mt. Vernon, WA.
- 3) C.B. Lumber & Shingle Co./Skagit Logging Co. survey of Section 9, T33N, R7E, W.M. (FB 284, Pg 37-41) and associated mapping dated 1/1/1950. Copies of which were obtained from the office of Hampton Tree Farms in Mt. Vernon, WA.
- 4) Georgia Pacific survey of portions of Section 16, T33N, R7E, W.M. (1954) contained in GP FB 181. Copies of which were obtained from the office of Hampton Tree Farms in Mt. Vernon, WA.
- 5) DNR final map # 335 in Sections 7 & 8, T33N, R7E, W.M. (1979)
- 6) Georgia Pacific survey of the North 1/2 of Section 21, T33N, R7E, W.M. (1963) contained in GP FB 365. Copies of which were obtained from the office of Hampton Tree Farms in Mt. Vernon, WA.
- 7) Land Corner Records as referenced.

Method of Survey: Closed loop field traverses using a Sokkia SET3E (0000057) total station. This survey meets or exceeds precision requirements as set forth in WAC 332-130-090.



Certificate Number: _____

Auditor's Certificate
Filed for record this 2 day of April, 2008
at 8:32AM in Book _____ of _____ at Page _____
At the request of Butler Surveying, Incorporated
County Auditor

Surveyor's Certificate

This map correctly represents a survey made by me
or under my direction in conformance with the
requirements of the Survey Recording Act at the
request of Hampton Tree Farms in March of 2008.

Record of Survey Description

The North half AND the East half of the Southwest
Quarter AND the West half of the Southeast Quarter all
in Section 21, Township 33 North, Range 7 East, W.M. in
Skagit County, Washington.

BUTLER SURVEYING INC.
475 NW CHEHALIS AVENUE
P.O. BOX 149, CHEHALIS, WA 98532
360/748-8803



Drawn C. Butler Date 03-25-08

Checked CB Job No. 03-140

Scale 1" = 400' Sheet 3 of 3

