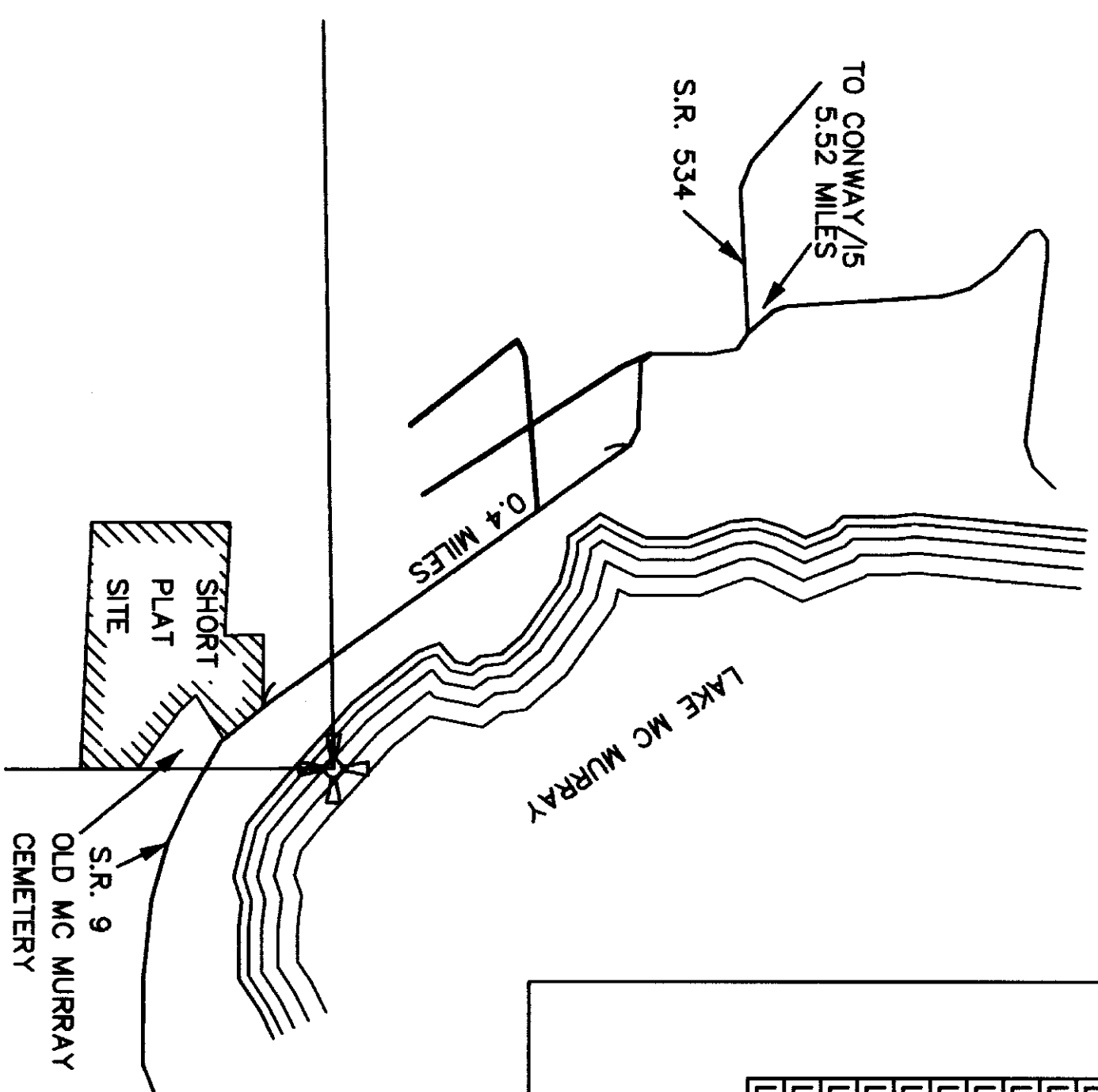






VICINITY MAP  
SCALE: 1" = 1000'



NUMBER	BEARING	DISTANCE
L1	N 00°54'20" E	253.16'
L2	S 02°40'07" W	210.50'
L3	S 89°45'35" E	134.50'
L4	N 18°32'04" E	219.20'
L5	N 89°05'40" W	194.40'
L6	N 00°54'20" E	30.00'
L7	N 00°54'20" E	208.70'
L8	N 89°05'40" W	208.70'
L9	N 00°54'20" E	208.70'
L10	N 89°05'40" W	208.70'
L11	S 00°54'20" W	208.70'
L12	S 81°29'05" W	89.59'
L13	S 89°05'40" E	104.35'
L14	N 00°54'20" E	417.40'
L15	N 89°05'40" W	104.35'

NUMBER	BEARING	DISTANCE
L16	S 89°05'40" E	104.35'
L17	N 89°05'40" W	104.35'
L18	S 00°54'20" W	208.70'
L19	N 00°54'20" E	208.70'
L20	S 89°05'40" E	115.37'
L21	S 89°05'40" E	158.63'
L22	S 89°05'40" E	101.20'
L23	N 89°05'40" W	39.91'
L24	N 89°05'40" W	99.58'
L25	S 49°05'40" W	234.39'
L26	S 49°05'40" W	234.39'
L27	N 32°00'31" W	146.24'
L28	N 56°01'58" W	23.62'
L29	S 02°00'29" W	810.05'

#### DETAIL OF LEGAL DESCRIPTION RESOLUTION

SEE SHEET 1 OF 4 FOR LEGAL DESCRIPTION.  
(9) INDICATES NUMBER ON MAP TO THE RIGHT  
CORRESPONDING TO NUMBERED LEGAL DESCRIPTION  
SECTIONS ON SHEET 1 OF 4.

SCALE: 1" = 200'

NUMBER	BEARING	DISTANCE
L30	N 89°05'40" W	158.63'
L31	S 89°05'40" E	99.58'
L32	S 89°05'40" E	39.91'
L33	N 39°06'41" W	41.28'
L34	S 56°01'58" E	23.62'
L35	N 49°59'40" E	234.39'
L36	N 32°00'31" W	146.24'
L37	S 42°41'49" E	218.47'
L38	N 02°00'35" E	78.93'
L39	N 02°00'35" E	238.68'
L40	N 02°00'35" E	482.42'
L41	N 89°24'52" W	321.20'
L42	N 02°00'28" E	810.05'
L43	N 89°24'52" W	324.60'
L44	S 89°45'35" E	100.49'
L45	S 89°05'40" E	208.70'
L46	N 00°54'20" E	208.70'

NUMBER	DELTA ANGLE	RADIUS	ARC LENGTH
C5	01°03'47"	2915.56	54.09
C6	01°00'56"	2990.56	53.01
C7	01°00'00"	3020.56	52.72
C8	16°55'17"	581.67	171.79

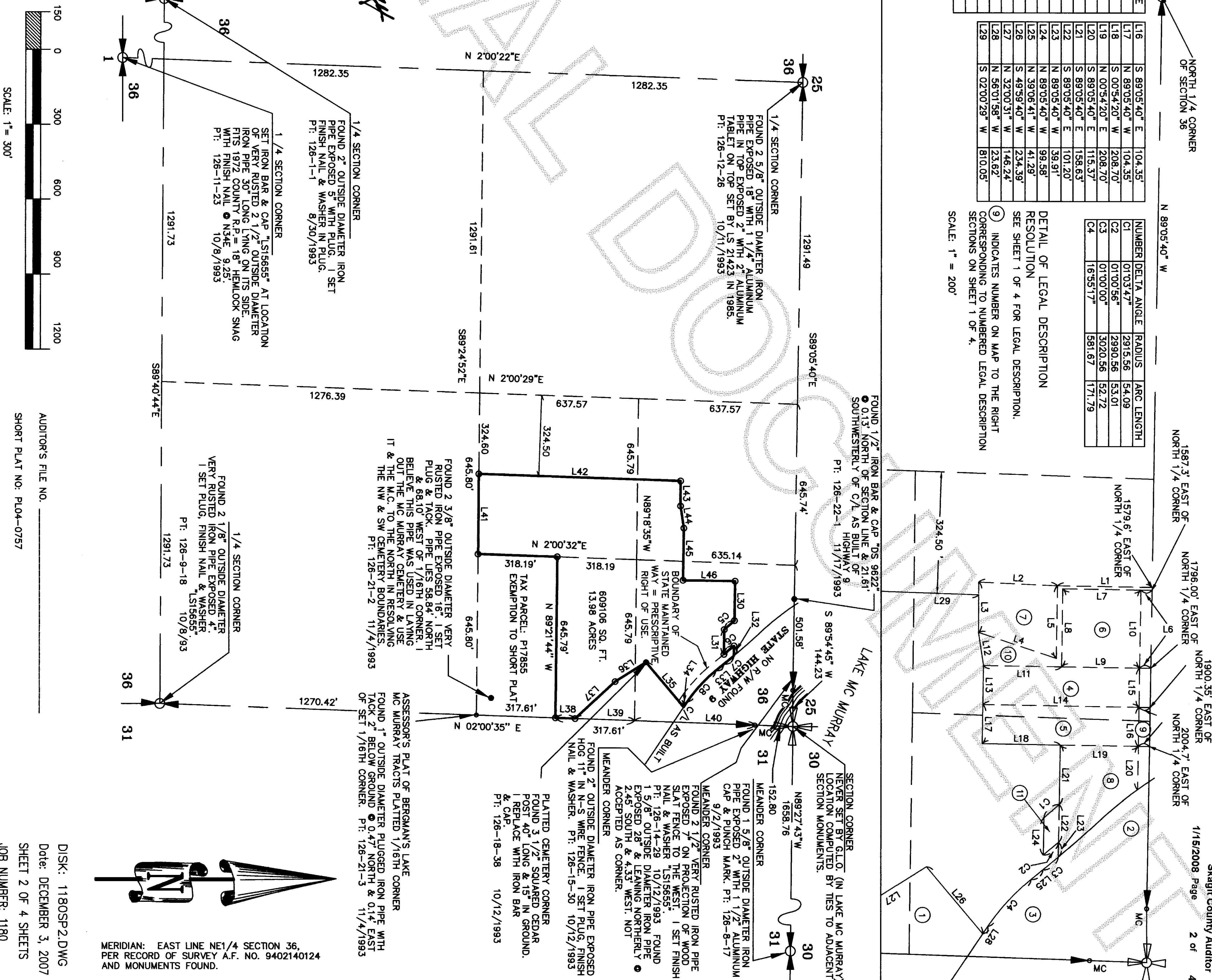
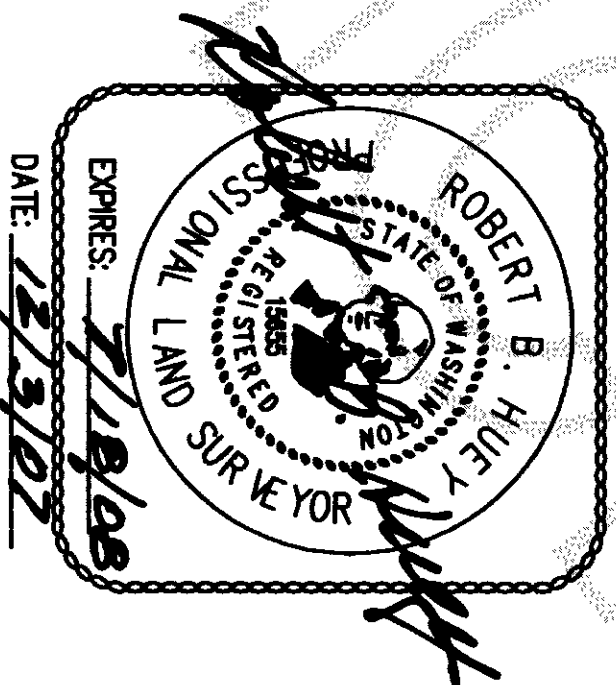
- Legend
- INDICATES 1/2" x 24" LONG IRON BAR & CAP "HUEY 15655" SET THIS SURVEY.
  - INDICATES FOUND SURVEY MARKER THIS SURVEY.
  - ⊙ INDICATES SURVEY MONUMENT FOUND THIS SURVEY.
  - ⊕ INDICATES G.L.O. MONUMENT FOUND THIS SURVEY.

METHOD OF SURVEY: CONVENTIONAL RANDOM REVERSE USING  
TOPCON GEODIMETER 600 3" ROBOTIC TOTAL STATION INSTRUMENT OF  
THIS SURVEY MEETS OR EXCEEDS THE REQUIREMENTS OF  
W.A.C. 332-130-090 AND THE STATE SURVEY RECORDING ACT.

### Short Plat for: HERBERT M. WISEMAN

Skagit County, Washington.

**Huey Surveying & Land Consulting, Inc.**  
18933 59th Avenue Northeast, Suite 115  
Arlington, Washington 98223  
Telephone: (360) 474-9945; Fax: (360) 435-7360



MERIDIAN: EAST LINE NE1/4 SECTION 36,  
PER RECORD OF SURVEY A.F. NO. 9402140124  
AND MONUMENTS FOUND.

AUDITOR'S FILE NO. \_\_\_\_\_  
DISK: 1180SP2.DWG  
Date: DECEMBER 3, 2007  
SHEET 2 OF 4 SHEETS  
JOB NUMBER: 1180



SECTION CORNER  
NEVER SET BY G.L.O. (IN LAKE MC MURRAY)  
LOCATION COMPUTED BY TIES TO ADJACENT  
SECTION MONUMENTS.

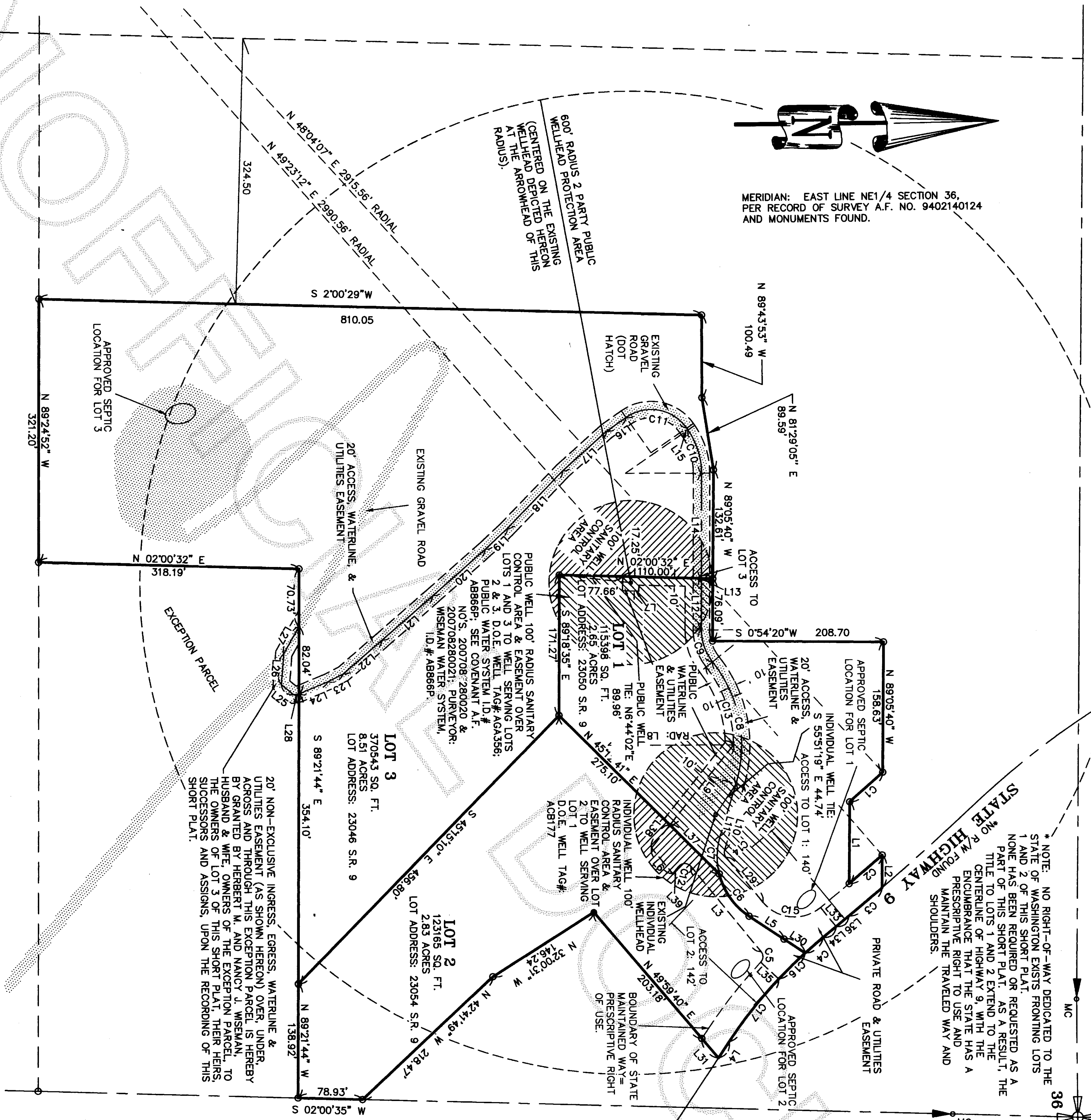
NUMBER	DELTA ANGLE	RADIUS	ARC LENGTH
C1	0103.47°	2815.56	54.09
C2	0100.56°	2890.56	53.01
C3	0100.00°	3020.56	52.72
C4	0248.58°	581.67	28.59
C5	8237.57°	10.00	14.42
C6	4254.30°	86.45	64.74
C7	3046.38°	86.45	46.44
C8	5528.02°	163.15	157.94
C9	3847.08°	62.17	41.98
C10	3447.29°	92.95	56.44
C11	8031.37°	52.94	83.64
C12	10135.12°	10.00	17.79
C13	3824.03°	153.15	102.84
C14	5628.00°	10.00	9.86
C15	8004.51°	50.00	78.61
C16	0428.34°	581.67	45.44
C17	0837.45°	581.67	97.76

NUMBER	BEARING	DISTANCE
L1	N 89°05'40" W	99.58'
L2	N 89°05'40" W	39.91'
L3	N 50°57'50" E	134.34'
L4	S 56°01'58" E	23.62'
L5	S 33°44'42" W	30.93'
L6	N 50°57'50" E	40.60'
L7	N 02°00'32" E	153.15'
L8	N 02°00'32" E	20.00'
L9	S 50°57'22" E	124.86'
L10	N 72°34'10" W	80.78'
L11	N 89°21'04" W	66.36'
L12	N 89°21'04" W	62.84'
L13	N 02°00'32" E	13.94'
L14	N 89°21'04" W	128.21'
L15	N 55°51'27" E	2.81'
L16	S 34°40'10" E	29.18'
L17	S 41°33'32" E	72.67'
L18	S 45°37'50" E	97.10'
L19	N 42°22'38" W	37.12'
L20	S 40°50'00" E	85.47'
L21	S 40°54'34" E	82.52'
L22	N 40°15'10" W	62.88'
L23	S 26°17'40" E	21.01'
L24	S 22°06'44" E	38.15'
L25	N 39°13'49" E	19.67'
L26	N 85°01'53" W	37.92'
L27	N 59°56'22" W	37.88'
L28	N 08°58'09" W	6.18'
L29	N 50°57'50" E	70.43'
L30	N 33°44'42" E	31.21'
L31	N 49°58'40" E	31.21'
L32	N 38°35'57" W	0.53'
L33	N 50°53'19" E	30.00'
L34	S 39°06'41" E	21.15'
L35	S 43°55'47" E	30.00'
L36	S 39°08'41" E	20.14'
L37	N 45°12'41" E	84.67'
L38	N 50°57'22" W	35.96'
L39	N 50°57'22" W	11.02'



SHORT PLAT DRINKING WATER SUPPLY NOTES:

THE ONE HUNDRED (100) FOOT RADIUS WELL PROTECTION ZONE FOR INDIVIDUAL WATER SYSTEMS MUST BE LOCATED ENTIRELY ON THE PROPOSED LOT OWNED IN FEE SIMPLE, OR THE OWNER MUST HAVE THE RIGHT TO EXERCISE COMPLETE SANITARY CONTROL OF THE LAND WITHIN THE REQUIRED WELL PROTECTION ZONE THROUGH OTHER LEGAL PROVISIONS, SUCH AS RECORDED COVENANTS OR EASEMENTS. (ORD. 02007004(PART); ORD. 14063(PART); 1991). LOT 1 IS SERVED BY AN INDIVIDUAL WELL WITH THE WASHINGTON STATE DEPARTMENT OF ECOLOGY TAG NUMBER "ACB177". CONTRACT SKAGIT COUNTY HEALTH DEPARTMENT TO DETERMINE ADDITIONAL WATER QUALITY OR QUANTITY TESTING WILL BE REQUIRED FOR BUILDING PERMIT APPROVALS PER SKAGIT COUNTY CODE TITLE: 12.48.240(3). LOTS 2 AND 3 ARE SERVED BY THE WISEMAN WATER SYSTEM (PUBLIC WATER SYSTEM IDENTIFICATION NUMBER "AB866P") UTILIZING THE WELL WITH THE WASHINGTON STATE DEPARTMENT OF ECOLOGY TAG NUMBER "AGA356". ON LOTS NO. 2 AND NO. 3, ACCESSORY DWELLING UNITS (ADU) SHALL BE LIMITED BY THE APPROVED CAPACITY OF THE PUBLIC WATER SYSTEM. NO DEVELOPMENT ACTIVITY SHALL TAKE PLACE ON LOTS NUMBER 1, 2 OR 3 WITHOUT PRIOR REVIEW AND APPROVAL BY THE PUBLIC WATER SYSTEM PURVEYOR AND SKAGIT COUNTY PUBLIC HEALTH DEPARTMENT.



MERIDIAN: EAST LINE NE1/4 SECTION 36,  
PER RECORD OF SURVEY A.F. NO. 9402140124  
AND MONUMENTS FOUND.

Short Plat for: HERBERT M. WISEMAN

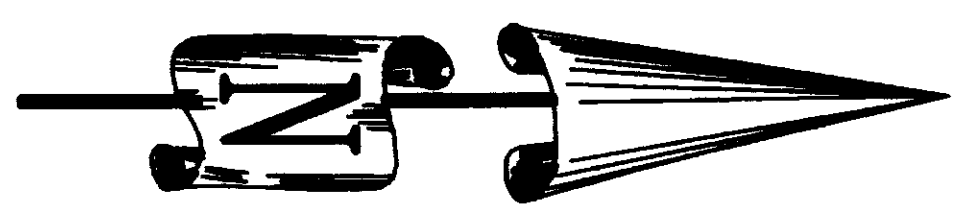
Skagit County, Washington.  
**Huey Surveying & Land Consulting, Inc.**  
18933 59th Avenue Northeast, Suite 115  
Arlington, Washington 98223  
Telephone: (360) 474-9945; Fax: (360) 435-7360



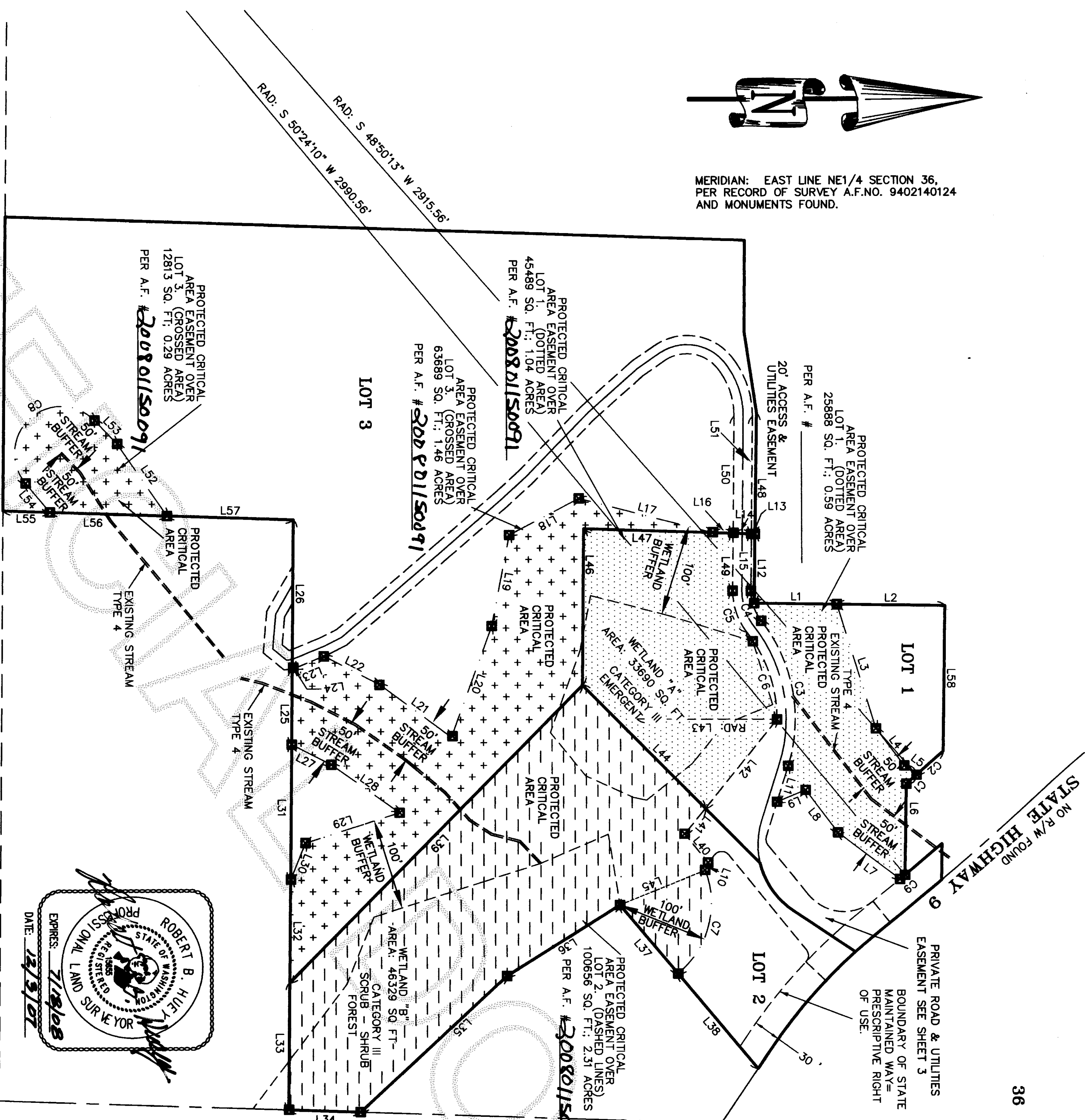
AUDITOR'S FILE NO. \_\_\_\_\_  
SHORT PLAT NO: PLO4-0757

DISK: 1180SP3.DWG  
DATE: DECEMBER 3, 2007  
SHEET: 3 OF 4 SHEETS.  
JOB NUMBER: 1180





MERIDIAN: EAST LINE NE1/4 SECTION 36,  
PER RECORD OF SURVEY A.F.NO. 9402140124  
AND MONUMENTS FOUND.



NUMBER	BEARING	DISTANCE
L1	N 00°54'20\"	90.53'
L2	N 00°54'20\"	118.17'
L3	S 72°44'16\"	141.96'
L4	N 52°46'35\"	51.22'
L5	S 37°07'18\"	16.65'
L6	S 89°05'40\"	99.58'
L7	S 37°07'18\"	84.77'
L8	N 52°46'35\"	58.58'
L9	N 22°12'45\"	33.79'
L10	N 68°11'44\"	8.92'
L11	N 72°34'10\"	40.99'
L12	N 89°05'40\"	76.09'
L13	N 02°00'32\"	3.94'
L14	N 02°00'32\"	20.01'
L15	N 89°21'04\"	62.60'
L16	N 02°00'32\"	22.63'
L17	N 14°35'55\"	151.08'
L18	N 27°26'50\"	85.93'
L19	S 78°53'48\"	101.74'
L20	N 69°46'23\"	128.18'
L21	N 36°23'38\"	97.33'
L22	S 27°15'54\"	68.40'
L23	N 22°06'44\"	34.50'
L24	S 08°58'09\"	2.85'
L25	N 89°21'44\"	82.99'
L26	N 89°21'44\"	162.91'
L27	N 27°11'36\"	48.80'
L28	N 35°17'55\"	91.53'
L29	N 17°37'00\"	108.47'
L30	N 67°47'58\"	43.32'
L31	N 89°21'44\"	148.14'
L32	S 89°21'44\"	112.83'
L33	S 89°21'44\"	138.92'
L34	N 02°00'35\"	78.93'
L35	S 42°41'49\"	218.47'
L36	N 32°00'31\"	146.24'
L37	N 49°59'40\"	98.52'
L38	N 49°59'40\"	135.87'
L39	N 45°15'10\"	456.80'
L40	N 50°57'50\"	40.60'
L41	N 50°57'22\"	35.96'
L42	N 50°57'22\"	124.86'
L43	N 00°21'50\"	153.15'
L44	S 45°12'41\"	190.43'
L45	N 21°53'49\"	100.70'
L46	S 89°18'35\"	171.27'
L47	S 02°00'32\"	141.08'
L48	N 89°05'40\"	132.61'
L49	S 89°21'04\"	63.07'
L50	N 89°21'04\"	127.97'
L51	S 89°21'04\"	128.45'
L52	N 55°26'29\"	96.00'
L53	N 45°58'59\"	35.36'
L54	S 50°02'39\"	41.52'
L55	N 02°00'32\"	51.56'
L56	S 02°00'32\"	128.22'
L57	S 02°00'32\"	138.42'
L58	S 89°05'40\"	158.63'

NUMBER	DELTA ANGLE	RADIUS	ARC LENGTH
C1	00°17'41\"	2815.56	13.00
C2	00°46'06\"	2815.56	39.09
C3	55°28'02\"	173.15	167.62
C4	38°41'08\"	52.17	35.22
C5	38°41'08\"	72.17	48.73
C6	38°24'03\"	153.15	102.64
C7	71°34'39\"	100.00	124.93
C8	175°57'20\"	51.00	156.62
C9	00°08'15\"	2890.56	7.18

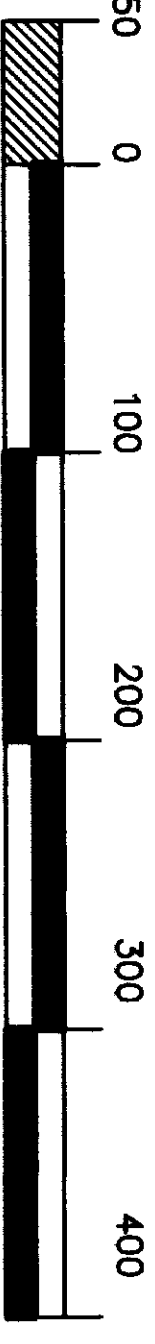
Legend

INDICATES SET METAL FENCE POST AT PROTECTED CRITICAL AREA BOUNDARY CORNER

Short Plat for: HERBERT M. WISEMAN

Skagit County, Washington.

Huey Surveying & Land Consulting, Inc.  
18933 59th Avenue Northeast, Suite 115  
Arlington, Washington 98223  
Telephone: (360) 474-9945; Fax: (360) 435-7360



SCALE: 1\" = 100'

AUDITOR'S FILE NO. \_\_\_\_\_  
SHORT PLAT NO: PLO4-0757