

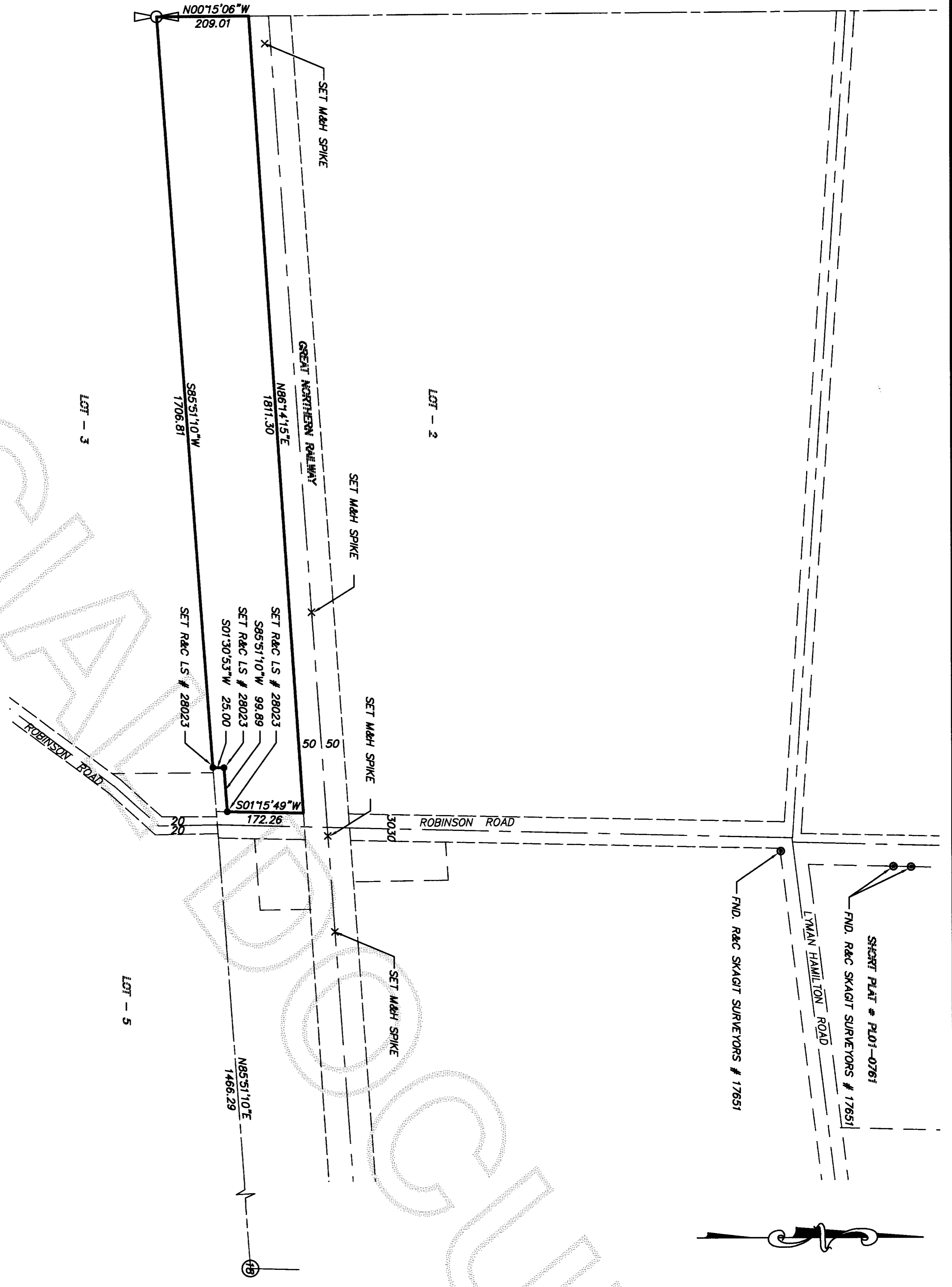
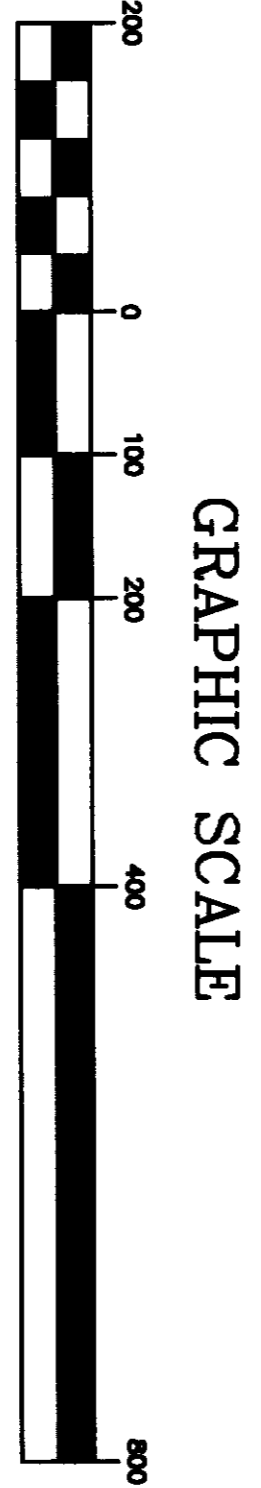
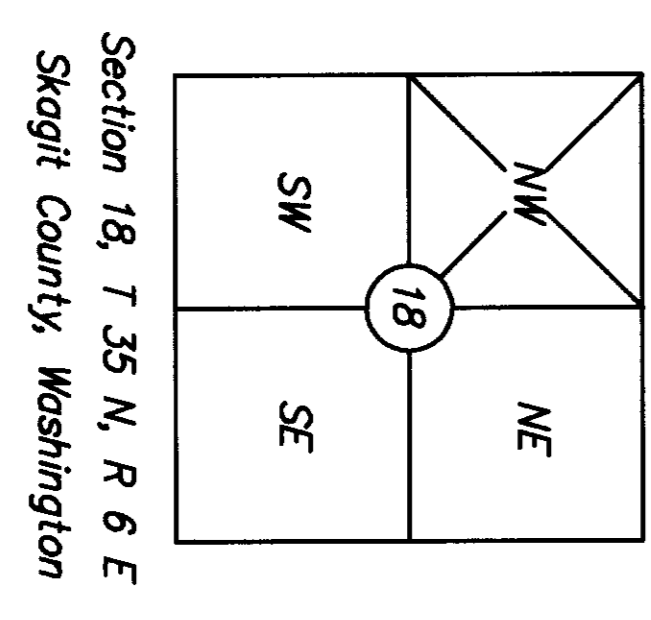


SURVEYOR'S CERTIFICATE
 THIS MAP CORRECTLY REPRESENTS A SURVEY MADE BY ME OR UNDER MY DIRECTION IN CONFORMANCE WITH THE REQUIREMENTS OF THE SURVEY RECORDING ACT AT THE REQUEST OF:
 BETH WHITMORE IN MAY 20, 05
 CERTIFICATE NO. 3569



NORTHWEST DATUM & DESIGN
 CIVIL ENGINEERING AND SURVEYING SOLUTIONS
 1128 E. FAIRHAVEN AVE
 BURLINGTON, WASHINGTON 98233
 PH: (360) 755-0434 FAX: (360) 755-0464
 WEB SITE: www.nwdd.com

RECORD OF SURVEY
 SURVEY in a portion of the SW 1/4 of the NW 1/4
 Section 18, T. 35 N., R. 6 E., WM
 for:
BETH WHITMORE
 In Sedro-Woolley, Washington



AUDITOR'S CERTIFICATE
 200509140115
 Skagit County Auditor
 9/14/2005 Page 1 of 1 1:12:08PM
 N Burnett by Cheryl Zundel
 COUNTY AUDITOR OR DEPUTY AUDITOR

- LEGEND**
- ⊕ EXISTING SECTION CORNER MONUMENT IN CASE
 - ⊙ EXISTING 1/4 CORNER MONUMENT IN CASE
 - EXISTING 1/16 CORNER MONUMENT IN CASE
 - ⊕ EXISTING MONUMENT IN CASE
 - EXISTING REBAR
 - EXISTING IRON PIPE
 - 5/8" REBAR SET WITH YELLOW CAP MARKED DES LS 28023
 - × SET M&H SPIKE

SURVEYING PROCEDURE
 FIELD TRAVERSE:
 LINEAR AND ANGULAR MEASUREMENTS MEET OR EXCEED STANDARDS SET IN WAC 332-130-090

SURVEY INSTRUMENTATION
 THEODOLITE: GEODIMETER 610
 SERIAL 61010236, STD DEV 3",
 EDM ± (5MM + 5PPM)

LEGAL DESCRIPTION
 SEE AF # 9812010041 BOOK 1906 PAGE 269

PROJECT: 05053
 DRAWING: 05053.dwg
 DRAWN BY: SCP
 CHECKED BY: RM
 DATE: 8/30/05