

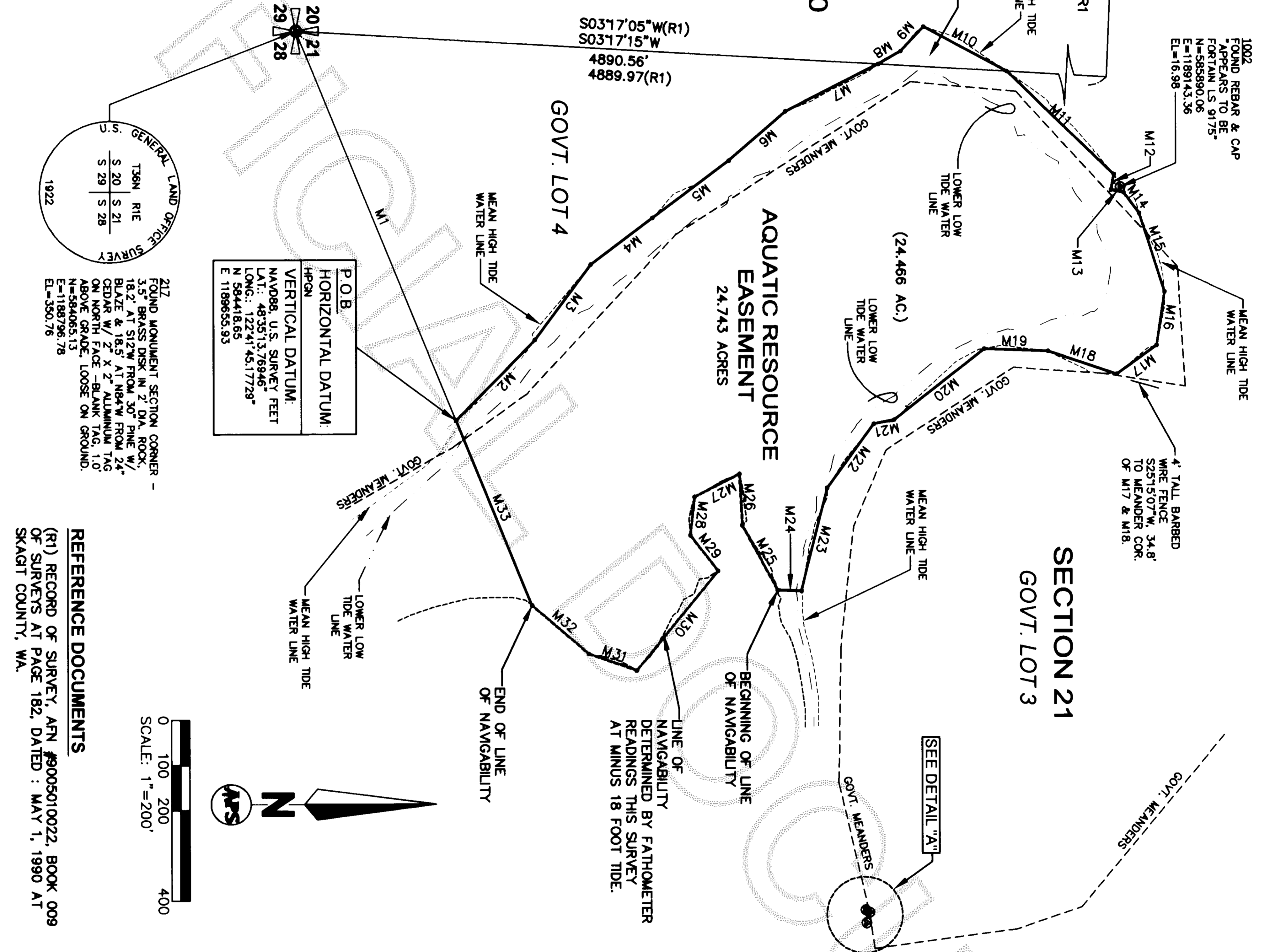
A PORTION WITHIN SECTION 20 AND 21, T36N, R01E, W.M., IN SKAGIT COUNTY, WASHINGTON

NOTE "A"
 MC
 300.00
 302.15
 302.15
 302.15

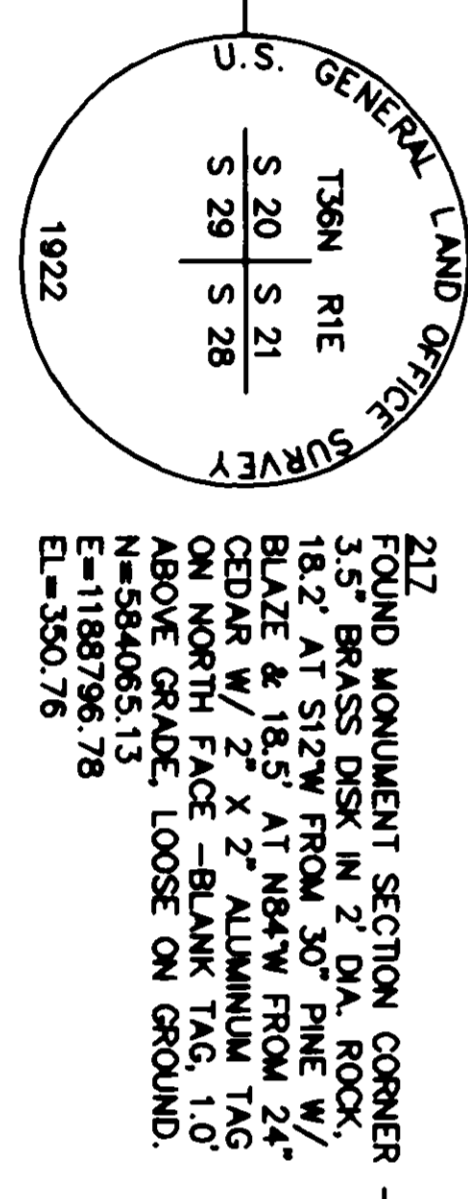
NOTE A
 WITNESS CORNER TO MEANDER CORNER RECORD IS S87°44'44"E FOR 48.66' CALCULATED TO MEAN HIGH WATER IS S87°43'20"E FOR 68.67'
 FOUND 3" BRASS DISK IN 4"x4" CONCRETE 2 FT BELOW GROUND.
 A 36 INCH FIR BEARING TREE BEARS S41E FOR 15.8 FT AND A 20 INCH CEDAR BEARING TREE BEARS N75W FOR 10.5 FEET
 N 589265.49
 E 1189629.85
 ELEV. = 23.30'

NOTE
 MEANDERS (M2 THROUGH M33) ARE SET AT THE MEAN HIGH WATER.

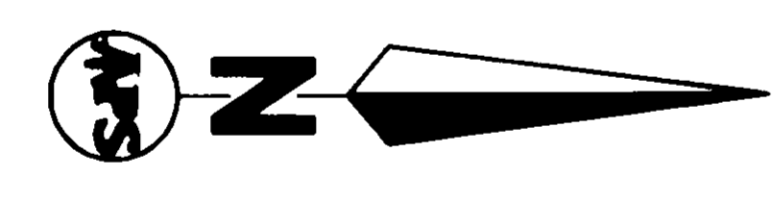
LINE	LENGTH	BEARING
M1	929.04'	N 67°38'03" E
M2	249.47'	N 45°22'12" W
M3	206.67'	N 53°04'58" W
M4	170.63'	N 36°55'37" W
M5	211.26'	N 36°45'41" W
M6	166.24'	N 40°56'35" W
M7	230.70'	N 26°54'24" W
M8	57.47'	N 30°04'00" W
M9	74.60'	N 46°51'42" W
M10	209.20'	N 28°25'33" E
M11	328.29'	N 43°56'13" E
M12	34.56'	S 79°50'40" E
M13	28.60'	N 12°12'40" E
M14	57.25'	N 53°32'06" E
M15	182.84'	N 72°08'36" E
M16	119.48'	S 81°32'51" E
M17	108.79'	S 35°28'30" E
M18	160.33'	S 18°38'44" W
M19	141.49'	S 01°55'32" W
M20	253.16'	S 38°05'21" E
M21	46.37'	S 11°10'59" E
M22	175.23'	S 53°53'37" E
M23	233.97'	S 75°56'22" E
M24	53.20'	S 02°01'01" W
M25	163.38'	S 61°25'24" W
M26	113.77'	S 86°55'47" W
M27	111.31'	S 27°07'10" E
M28	85.65'	S 83°40'45" E
M29	99.72'	N 52°03'14" E
M30	284.73'	S 50°49'48" E
M31	112.81'	S 19°13'50" W
M32	165.97'	S 40°42'22" W
M33	442.40'	S 67°38'03" W



P.O.B.
 HORIZONTAL DATUM:
 HPGN
 VERTICAL DATUM:
 NAVD88, U.S. SURVEY FEET
 LAT.: 48°35'13.76946"
 LONG.: 122°41'45.17729"
 N 594418.65
 E 1189655.93



REFERENCE DOCUMENTS
 (R1) RECORD OF SURVEY, AFN #9005010022, BOOK 009 OF SURVEYS AT PAGE 182, DATED: MAY 1, 1990 AT SKAGIT COUNTY, WA.



BASIS OF BEARINGS & COORDINATES
 COORDINATES ARE BASED ON WASHINGTON STATE PLANE COORDINATES, NORTH ZONE
 CORS SEAT RINEX2
 STATION MONUMENT: (EAGLE 2)
 A 3.5" BRASS DISK IN CONCRETE ON ROCK ON EAGLE HARBOR "U.S. COAST & GEODETIC SURVEY, EAGLE 2, 1939".
 REFERENCE MONUMENTS #1: (TO EAGLE 2)
 A 3.5" BRASS DISK IN CONCRETE ON ROCK, S74°18'17"E, 24.16' FROM STATION MON., MARKED "U.S.C. & G. REFERENCE MARKER, EAGLE 2, 1939, NO. 1, WITH SCRIBED REFERENCE ARROW".
 REFERENCE MONUMENTS #2: (TO EAGLE 2)
 A 3.5" BRASS DISK IN CONCRETE ON ROCK, S32°49'09"W, 10.25' FROM STATION MON., MARKED "U.S.C. & G., EAGLE 2, 1939, NO. 2, WITH SCRIBED REFERENCE ARROW".

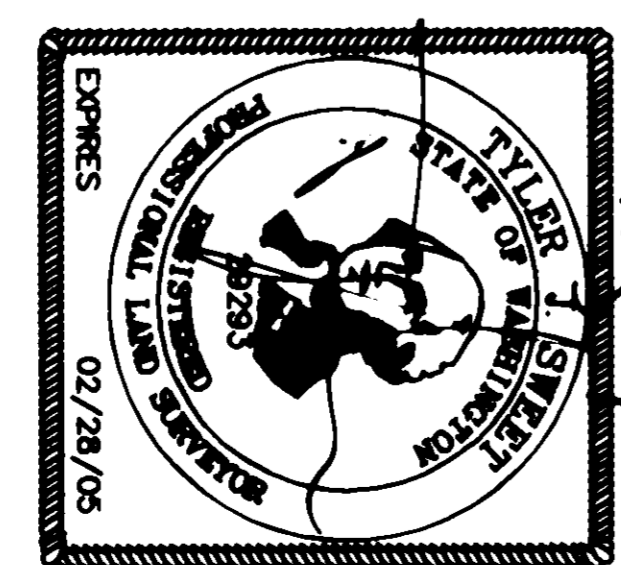
DATUM INFORMATION

RECORD VALUES FOR "EAGLE 2"
 HPGN = 483523.04641'N 1224129.28380'W
 NAD(27) = 483523.66800'N 1224124.66600'W
 FROM NAD27 TO HPGN
 THE LOCAL AREA DIFFERENCE = LAT. = - 0°00'00.6216"
 THE LOCAL AREA DIFFERENCE = LONG. = 0°00'04.6178"
 ALL VERTICAL DATA IS EXPRESSED IN MILLW DATUM.
 MEAN HIGH TIDE = 8.31'
 MEAN TIDE = 5.47'
 LOWER LOW TIDE = 0.00'

THE TIDES WERE ADJUSTED BY A COMPARISON OF THE MARCH 20TH TIDES CALCULATED FOR EAGLE HARBOR, CYPRESS ISLAND WASHINGTON FROM THE NOAA TIDE PREDICTOR TABLES OUR GPS ELEVATION FOR NAVD 88 = 0.30'. USUALLY IT IS CLOSER TO MSL WHICH = 5.28'. WE QUESTIONED THIS AND TOOK SEVERAL READINGS ON THE TIDES ON FOLLOWING DAYS AND FOUND THE SAME RELATIONSHIP.

SURVEYOR'S CERTIFICATE

THIS MAP CORRECTLY REPRESENTS A SURVEY MADE BY ME OR UNDER MY DIRECTION IN CONFORMANCE WITH THE REQUIREMENTS OF THE SURVEY RECORDING ACT AT THE REQUEST OF S.B. & A.S. 11, 2005 ASSOCIATES, IN MARCH OF 2004.
 SURVEYOR: TYLER J. SWEET, P.L.S.
 CERTIFICATE NO.: 29293
 DATE: Aug 11 2005



AUDITOR'S CERTIFICATE

FILED FOR RECORD THIS 19th DAY OF August, 2005, AT 11:03 AM IN VOLUME 2005010022 OF SURVEYS AT PAGE(S) AT THE REQUEST OF APS SURVEY & MAPPING, L.L.C.
 SIGNED: [Signature] COUNTY AUDITOR [Signature]

200508150141
 Skagit County Auditor
 8/15/2005 Page 1 of 211:53AM

SHEET 1 OF 2
 SURVEYED BY: TJS
 DRAWN BY: MAGG
 CHECKED BY: TJS
 APPROVED BY: TJS
 REVISION
 DATE BY CKD APPR

RECORD OF SURVEY
AQUATIC RESOURCE APPLICATION NO. 20-011458
EAGLE HARBOR - CYPRESS ISLAND, WASHINGTON

APS SURVEY & MAPPING
 640 N.W. GILMAN BOULEVARD,
 SUITE 101
 BELLINGHAM, WASHINGTON 98227
 TEL: (425) 427-2854
 FAX: (425) 427-2858

A PORTION WITHIN SECTION 20 AND 21, T36N, R01E, W.M., IN SKAGIT COUNTY, WASHINGTON

LEGAL DESCRIPTION

AN AQUATIC RESOURCE EASEMENT IN FRONT OF GOVERNMENT LOT 2 OF SECTION 20, AND IN FRONT OF GOVERNMENT LOTS 3 AND 4 OF SECTION 21, ALL IN T36N, R01E, W.M. IN SKAGIT COUNTY WASHINGTON, SAID EASEMENT IS MORE PARTICULARLY DESCRIBED AS FOLLOWS:

COMMENCING AT THE WITNESS CORNER TO THE MEANDER CORNER ON THE NORTH SECTION LINE OF SAID SECTION 20, MONUMENTED BY A DNR BRASS DISK IN CONCRETE;

THENCE S 02°15'13" W FOR A DISTANCE OF 300.00 FEET;

THENCE S 87°44'47" E PARALLEL TO THE NORTH LINE OF SAID SECTION 20 FOR A DISTANCE OF 459.54 FEET TO THE EAST SECTION LINE OF SAID SECTION 20;

THENCE S 03°17'15" W ALONG THE SECTION LINE COMMON TO SAID SECTION 20 AND 21 FOR A DISTANCE OF 4890.56 FEET TO A BRASS DISK AT THE SOUTHWEST CORNER OF SAID SECTION 21;

THENCE N 67°38'03" E FOR A DISTANCE OF 929.04 FEET TO A POINT ON THE POINT OF MEAN HIGH WATER OF BELLINGHAM CHANNEL AND THE TRUE POINT OF BEGINNING;

THENCE N 45°22'12" W ALONG SAID MEAN HIGH WATER FOR A DISTANCE OF 249.47 FEET;

THENCE CONTINUING ALONG THE MEAN HIGH WATER N 53°04'58" W FOR A DISTANCE OF 206.67 FEET;

THENCE CONTINUING ALONG THE MEAN HIGH WATER N 36°55'37" W FOR A DISTANCE OF 170.63 FEET;

THENCE CONTINUING ALONG THE MEAN HIGH WATER N 36°45'41" W FOR A DISTANCE OF 211.26 FEET;

THENCE CONTINUING ALONG THE MEAN HIGH WATER N 40°56'35" W FOR A DISTANCE OF 166.24 FEET;

THENCE CONTINUING ALONG THE MEAN HIGH WATER N 26°54'24" W FOR A DISTANCE OF 230.70 FEET TO A POINT ON THE COMMON LINE BETWEEN SAID SECTIONS 20 AND 21;

THENCE CONTINUING ALONG THE MEAN HIGH WATER N 30°04'00" W FOR A DISTANCE OF 57.47 FEET;

THENCE CONTINUING ALONG THE MEAN HIGH WATER N 46°51'42" W FOR A DISTANCE OF 74.60 FEET;

THENCE CONTINUING ALONG THE MEAN HIGH WATER N 28°25'33" E FOR A DISTANCE OF 209.20 FEET TO A POINT ON THE COMMON LINE BETWEEN SAID SECTIONS 20 AND 21;

THENCE CONTINUING ALONG THE MEAN HIGH WATER N 43°56'13" E FOR A DISTANCE OF 328.29 FEET;

THENCE CONTINUING ALONG THE MEAN HIGH WATER S 79°50'40" E FOR A DISTANCE OF 34.56 FEET;

THENCE CONTINUING ALONG THE MEAN HIGH WATER N 12°12'40" E FOR A DISTANCE OF 28.60 FEET;

THENCE CONTINUING ALONG THE MEAN HIGH WATER N 53°32'06" E FOR A DISTANCE OF 57.25 FEET;

THENCE CONTINUING ALONG THE MEAN HIGH WATER N 72°08'36" E FOR A DISTANCE OF 182.84 FEET;

THENCE CONTINUING ALONG THE MEAN HIGH WATER S 81°32'51" E FOR A DISTANCE OF 119.48 FEET;

THENCE CONTINUING ALONG THE MEAN HIGH WATER S 35°28'30" E FOR A DISTANCE OF 108.79 FEET;

THENCE CONTINUING ALONG THE MEAN HIGH WATER S 18°38'44" W FOR A DISTANCE OF 160.33 FEET;

THENCE CONTINUING ALONG THE MEAN HIGH WATER S 01°55'32" W FOR A DISTANCE OF 141.49 FEET;

THENCE CONTINUING ALONG THE MEAN HIGH WATER S 38°05'21" E FOR A DISTANCE OF 233.16 FEET;

THENCE CONTINUING ALONG THE MEAN HIGH WATER S 11°10'59" E FOR A DISTANCE OF 46.37 FEET;

THENCE CONTINUING ALONG THE MEAN HIGH WATER S 53°45'37" E FOR A DISTANCE OF 175.23 FEET;

THENCE CONTINUING ALONG THE MEAN HIGH WATER S 75°56'22" E FOR A DISTANCE OF 233.97 FEET;

THENCE S 02°01'01" W DEPARTING INTO BELLINGHAM CHANNEL FOR A DISTANCE OF 53.20 FEET TO A POINT ON THE MINUS 18 FOOT LINE AND THE LINE OF NAVIGABLE WATER;

THENCE S 61°25'24" W ALONG THE LINE OF NAVIGABLE WATER FOR A DISTANCE OF 163.98 FEET;

THENCE S 86°55'47" W ALONG THE LINE OF NAVIGABLE WATER FOR A DISTANCE OF 113.77 FEET;

THENCE S 27°07'10" E ALONG THE LINE OF NAVIGABLE WATER FOR A DISTANCE OF 111.31 FEET;

THENCE S 83°40'45" E ALONG THE LINE OF NAVIGABLE WATER FOR A DISTANCE OF 85.65 FEET;

THENCE N 52°03'14" E ALONG THE LINE OF NAVIGABLE WATER FOR A DISTANCE OF 99.72 FEET;

THENCE S 50°49'48" E ALONG THE LINE OF NAVIGABLE WATER FOR A DISTANCE OF 284.73 FEET;

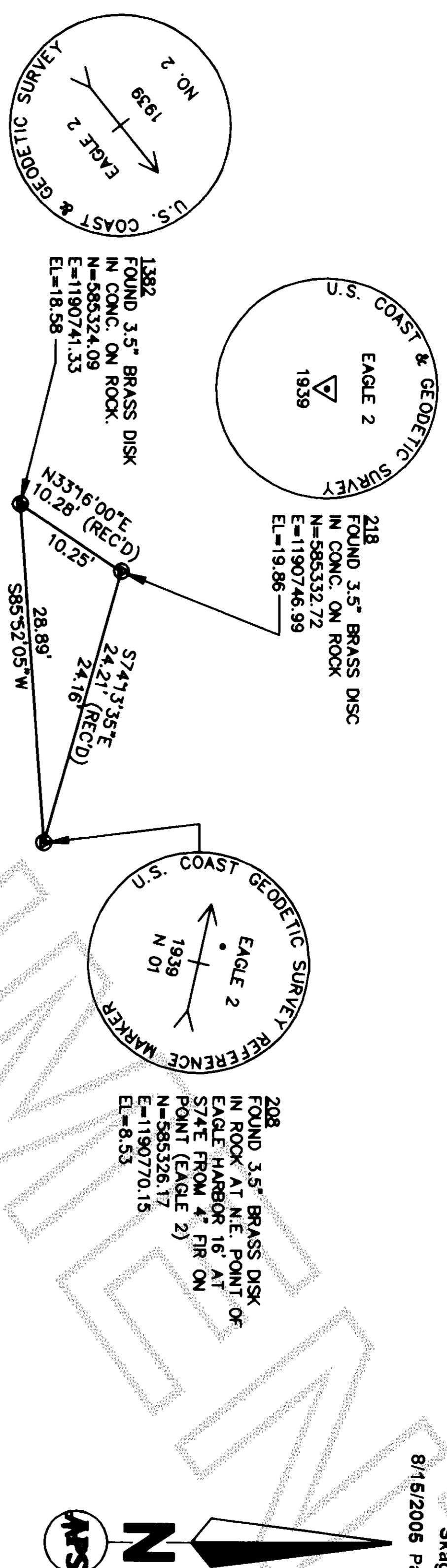
THENCE S 19°18'50" W ALONG THE LINE OF NAVIGABLE WATER FOR A DISTANCE OF 112.81 FEET;

THENCE S 40°42'22" W ALONG THE LINE OF NAVIGABLE WATER FOR A DISTANCE OF 165.97 FEET;

THENCE S 67°38'03" W DEPARTING FROM THE LINE OF NAVIGABLE WATER FOR A DISTANCE OF 442.40 FEET TO THE MEAN HIGH WATER AND THE TRUE POINT OF BEGINNING.

SAID EASEMENT CONTAINS 24.743 ACRES, MORE OR LESS OF WHICH 0.277 ACRES ARE ENCOMPASSED IN SAID SECTION 20 AND 24.466 ACRES ARE ENCOMPASSED IN SAID SECTION 21.

SHEET	SURVEYED BY: TJS		CHECKED BY: TJS	
2	DRAWN BY: MAGC	APPROVED BY: TJS		CKD
OF	BY:	REVISION	APPR	
2				



NOTES

1. THE SOLE PURPOSE OF THIS SURVEY WAS TO CREATE AN AQUATIC RESOURCE EASEMENT AS SHOWN HEREON.
2. UNDER THE TERM WITH OUR CLIENT, DEPARTMENT OF NATURAL RESOURCES (DNR), WE WERE NOT ALLOWED TO SET PERMANENT MONUMENTS FOR THIS SURVEY. WE WERE ALSO PROHIBITED FROM SCRIBING ROCKS OR TREES. NO MONUMENTS SET THIS SURVEY.
3. THIS SURVEY WAS BASED ON A GPS CONTROL NETWORK WSDOT CONTROL MONUMENTATION NEAR THE SITE. A COMBINATION OF FAST STATIC AND REAL TIME GPS METHODS WERE INTERIED WITH CONVENTIONAL TRAVERSE TO CREATE THE NETWORK. THIS NETWORK MEETS OR EXCEEDS THE ACCURACY STANDARDS SET BY WAC 332-130-090. ALL MONUMENTS FOUND HEREON WERE OCCUPIED ON MARCH OF 2004.
4. THE PRIMARY INSTRUMENT WAS CALIBRATED IN OCTOBER 2003 AT THE KING COUNTY BASELINE.
5. THIS SURVEY DOES NOT CONSTITUTE A SUBDIVISION OF LAND.

RECORD OF SURVEY

AQUATIC RESOURCE APPLICATION NO. 20-011458

EAGLE HARBOR - CYPRESS ISLAND, WASHINGTON

SEE SCALE BAR DATE: 04/12/04 APSSM JOB NO.: 1109002 AutocAD DWG NAME: 1109002R.DWG

APPS
SURVEY & MAPPING

640 N.W. GILMAN BOULEVARD,
SUITE 101
BESQUART WASHINGTON 98027

TEL (425) 427-2554
FAX (425) 427-2566