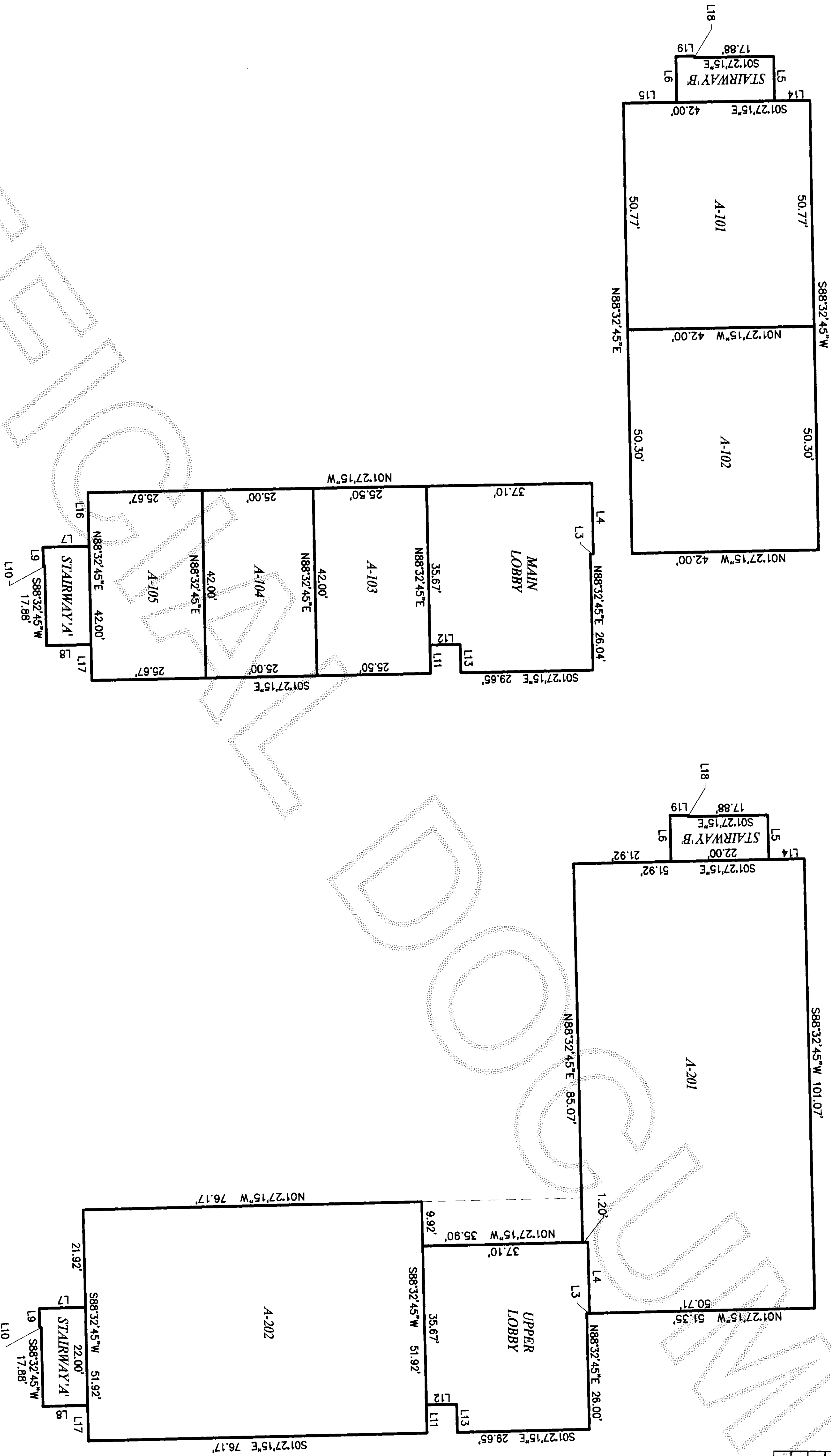




AREAS		AREA	FLOOR/CEILING ELEV.
UNIT	AREA		
A-101	2,132.24 SF	32.00/42.60	
A-102	2,112.60 SF	32.00/42.60	
A-201	5,227.85 SF	44.00/53.00	
STAIRWAY 'B'	222.28 SF	32.00/53.00	
A-103	1,071.00 SF	32.00/42.60	
A-104	1,050.00 SF	32.00/42.60	
A-105	1,077.95 SF	32.00/42.60	
A-202	3,954.28 SF	44.00/53.00	
STAIRWAY 'A'	222.35 SF	32.00/53.00	
MAIN LOBBY	1,498.43 SF	32.00/42.60	
UPPER LOBBY	1,498.46 SF	44.00/53.00	



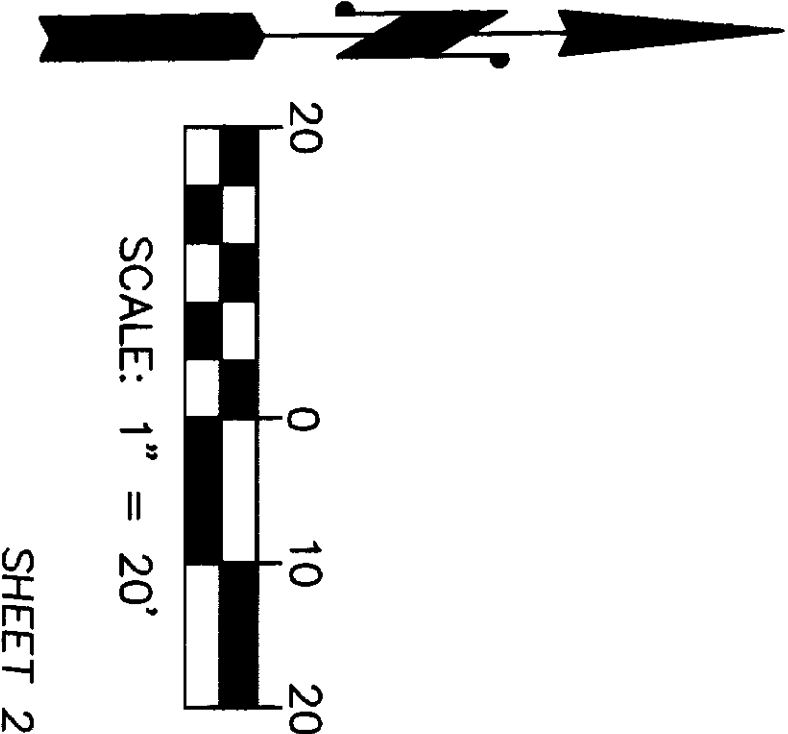
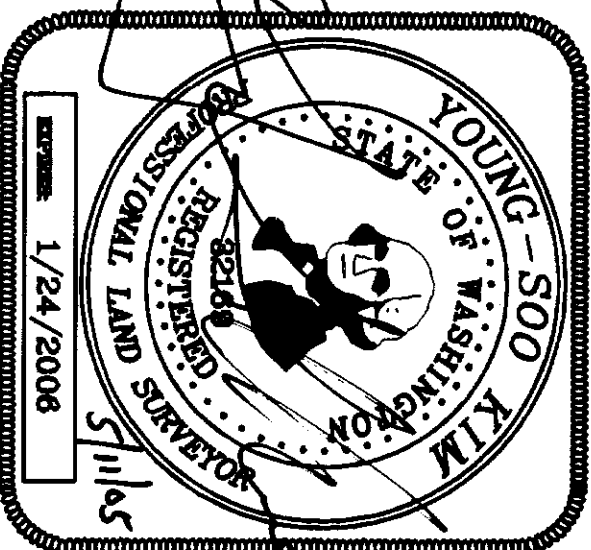
MAIN FLOOR

UPPER FLOOR

SURVEY MAP AND PLANS FOR  
ADVANTAGE BUSINESS PARK CONDOMINIUM  
SECTION 8, TOWNSHIP 34 N., RANGE 4 E., W.M.  
BURLINGTON, WASHINGTON

03184

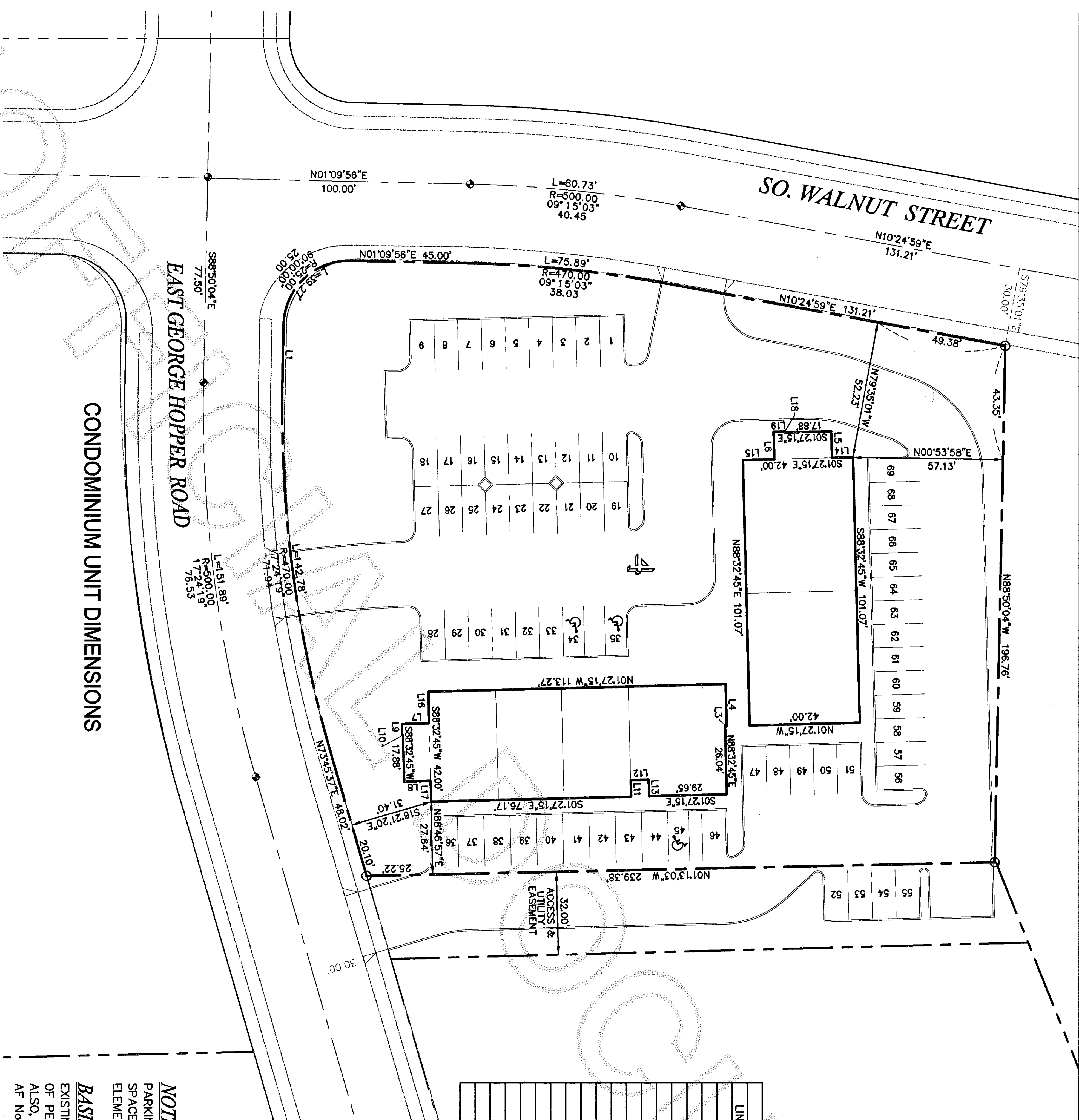
SUMMIT ENGINEERS & SURVEYORS, INC.  
2218 OLD HIGHWAY 99 SOUTH ROAD, MOUNT VERNON, WA. 98273  
PHONE: (360) 416-4999 FAX: (360) 416-4949  
E-MAIL: YSK@SUMMITES.COM



BASIS OF BEARING

EXISTING SURVEY MONUMENTS FOUND ALONG THE CENTERLINE  
OF PEASE ROAD PER PREVIOUS SURVEY S 89°01'59" E.  
ALSO, PER HOPPER ROAD BUSINESS PARK BINDING SITE PLAN  
AF No. 200301300162 RECORDS OF SKAGIT COUNTY, WASHINGTON.





LINE	LENGTH	BEARING
L1	22.50	S88°50'04"E
L3	0.64	S01°27'15"E
L4	16.00	N88°32'45"E
L5	10.04	S88°32'45"W
L6	10.38	N88°32'45"E
L7	10.38	N01°27'15"W
L8	10.04	S01°27'15"E
L9	4.12	S88°32'45"W
L10	0.33	N01°27'15"W
L11	6.33	N88°32'45"E
L12	6.81	S01°27'15"E
L13	6.33	S88°32'45"W
L14	8.00	S01°27'15"E
L15	12.00	S01°27'15"E
L16	12.00	S88°32'45"W
L17	8.00	S88°32'45"W
L18	0.33	N88°32'45"E
L19	4.12	S01°27'15"E

**NOTE**  
PARKING SPACES NUMBERED 36 - 69 ARE "EMPLOYEE" PARKING SPACES WHICH MAY BE ALLOCATED TO UNITS AS LIMITED COMMON ELEMENTS UNDER SECTION 6.1.2. OF THE DECLARATION.

**BASIS OF BEARING**  
EXISTING SURVEY MONUMENTS FOUND ALONG THE CENTERLINE OF PEASE ROAD PER PREVIOUS SURVEY S 89°01'59" E.  
ALSO, PER HOPPER ROAD BUSINESS PARK BINDING SITE PLAN AF No. 200301300162 RECORDS OF SKAGIT COUNTY, WASHINGTON.

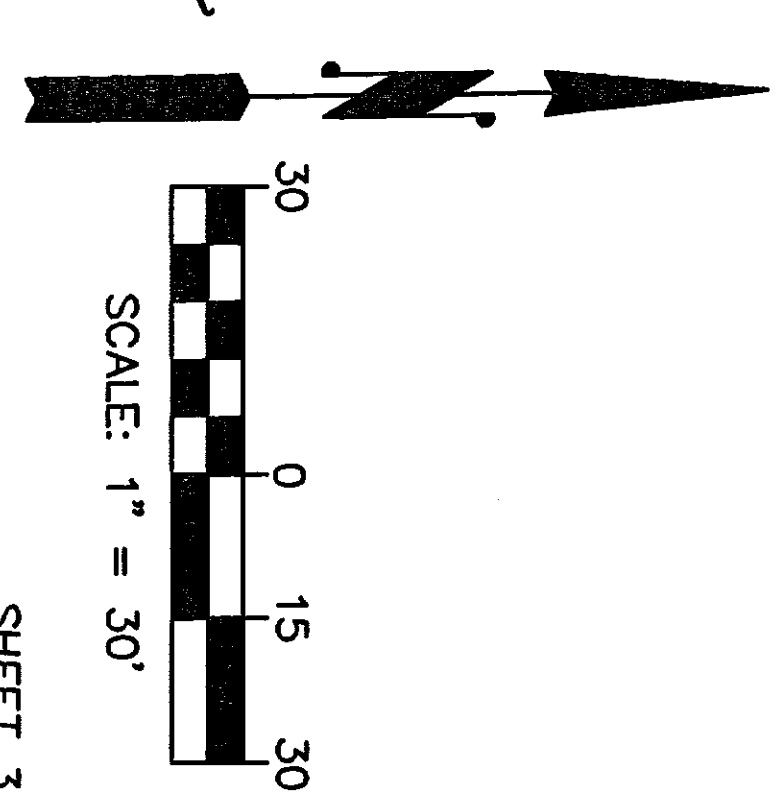
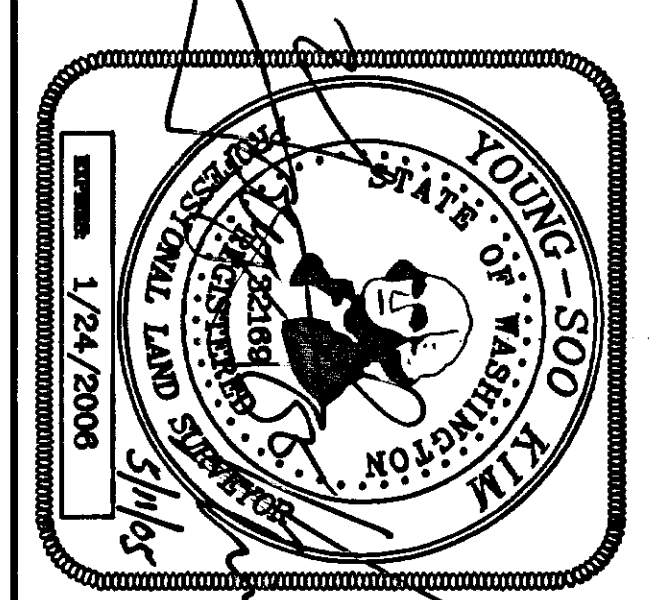
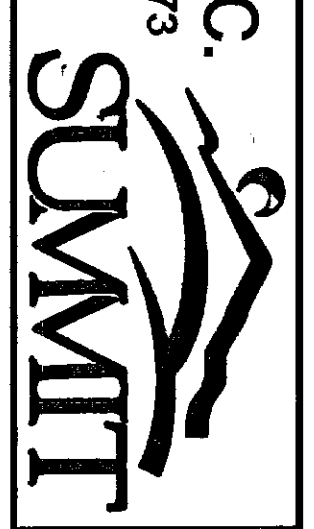
**SURVEY EQUIPMENT & PROCEDURE**  
THIS SURVEY WAS COMPLETED AND ACCOMPISHED BY FIELD TRAVERSE USING A TOPCON GTS-3C TOTAL STATION ON 10-04.

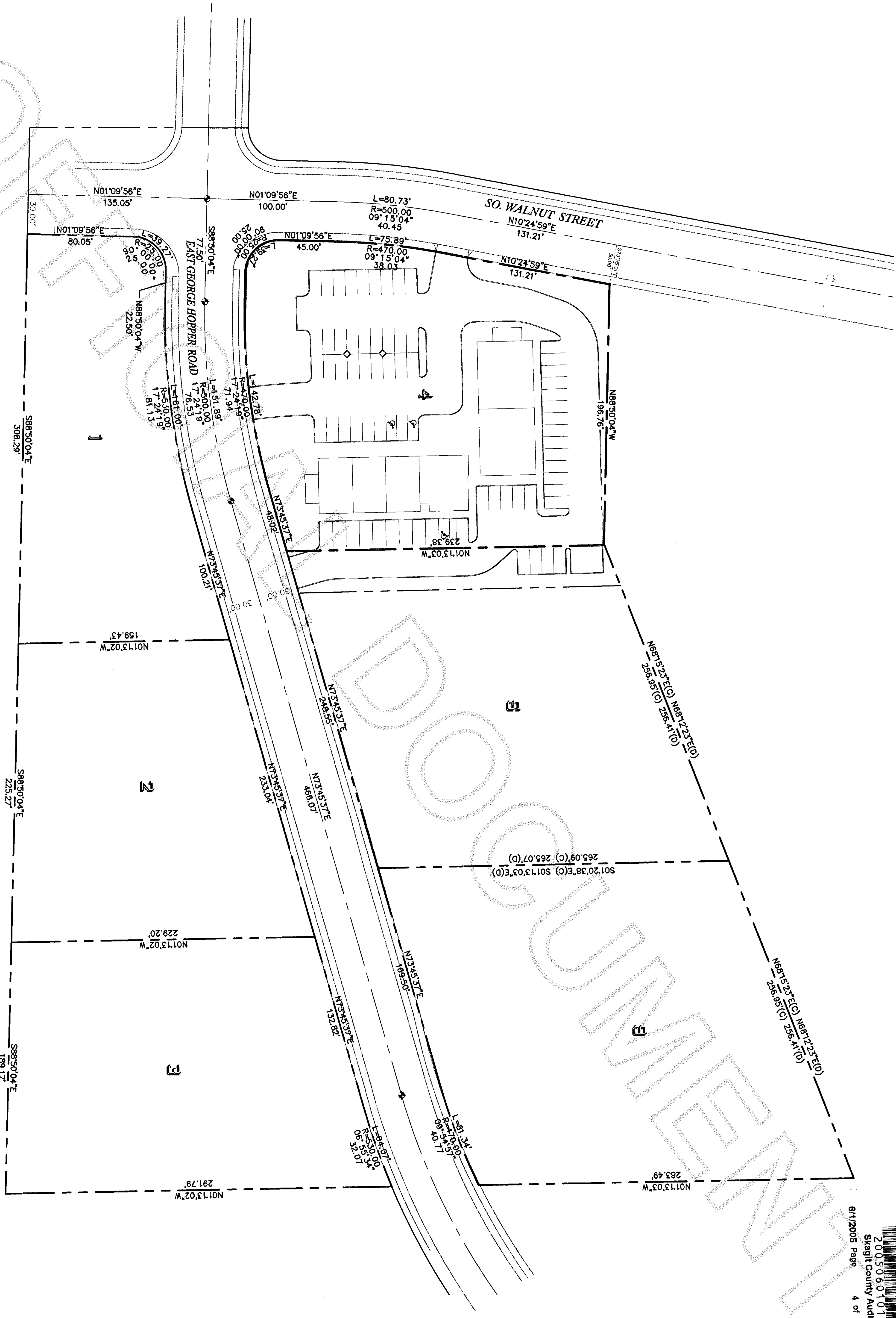
**BENCH MARK**  
BRASS DISK IN CONCRETE MONUMENT ELEV.=29.60 (MEAN SEA LEVEL) LOCATED AT EAST GEORGE HOPPER ROAD & WALNUT STREET.

**LEGEND**  
O FND. REBAR & CAP 28626 (APR. '05)  
• SET REBAR & CAP #32169  
◆ FND. CONC. MON. PER AFN.200301300162

SURVEY MAP AND PLANS FOR  
**ADVANTAGE BUSINESS PARK CONDOMINIUM**  
SECTION 8, TOWNSHIP 34 N., RANGE 4 E., W.M.  
BURLINGTON, WASHINGTON

03184  
SUMMIT ENGINEERS & SURVEYORS, INC.  
2218 OLD HIGHWAY 99 SOUTH ROAD, MOUNT VERNON, WA. 98273  
PHONE: (360) 416-4899 FAX: (360) 416-4949  
E-MAIL: YSK@SUMMITES.COM





CONDOMINIUM SITE PLAN

NOTE:

LOTS 1, 2, 3, 5 AND 9, "HOPPER ROAD BUSINESS PARK, REVISED BINDING SITE PLAN," RECORDED JANUARY 30, 2003, UNDER AUDITOR'S FILE NO. 200301300162, RECORDS OF SKAGIT COUNTY, WASHINGTON ARE SUBJECT TO DEVELOPMENT RIGHTS SET FORTH IN THE DECLARATION AND MAYBE ADDED TO THE CONDOMINIUM.

SURVEY MAP AND PLANS FOR

ADVANTAGE BUSINESS PARK CONDOMINIUM

SECTION 8, TOWNSHIP 34 N., RANGE 4 E., W.M.  
BURLINGTON, WASHINGTON

03184

SUMMIT ENGINEERS & SURVEYORS, INC.

2218 OLD HIGHWAY 99 SOUTH ROAD, MOUNT VERNON, WA. 98273  
PHONE: (360) 416-4989 FAX: (360) 416-4949  
E-MAIL: YSK@SUMMITES.COM

