





# Skyview Dream Acres

Survey in the SW1/4 of the SW1/4 of Section 4,  
in the SE1/4 of the SE1/4 of Section 5, and in the  
NE1/4 of the NE1/4 of Section 8, Twp. 36 N., Rng. 4 E., W.M.

## Legend

- SET 1/2" X 18" REINFORCING ROD WITH YELLOW PLASTIC CAP MARKED "SKA SURV 17651" AND WHITE 2" X 2" WITNESS STAKE, EXCEPT AS NOTED.
- SET 1/2" X 18" REINFORCING ROD WITH YELLOW PLASTIC CAP MARKED "SKA SURV 17651" AND 5/16" X 48" STEEL POST PAINTED WHITE WITH LABEL MARKED "PCA".
- SET CONCRETE MONUMENT WITH 2" BRASS CAP IN CASE AND COVER.
- BRASS CAP.
- ACCESS LOCATIONS
- PCA — PROTECTED CRITICAL AREA BOUNDARY
- WL — WETLAND LIMITS
- CATEGORY III WETLAND (SEE WETLAND MITIGATION PLAN PREPARED BY ATSI DATED MAY 2000).
- B — A FRONT SETBACK LINE THAT CONFORMS TO THE S.C.C. 14.04.020 DEFINITION OF LOT WIDTH. THERE ARE NUMEROUS ALTERNATE CONFORMING POSITIONS FOR THIS LINE.
- DRAIN FIELD SITE
- AREAS OF APPROVED SOILS FOR DRAINAGE AND/OR RESERVE AREAS

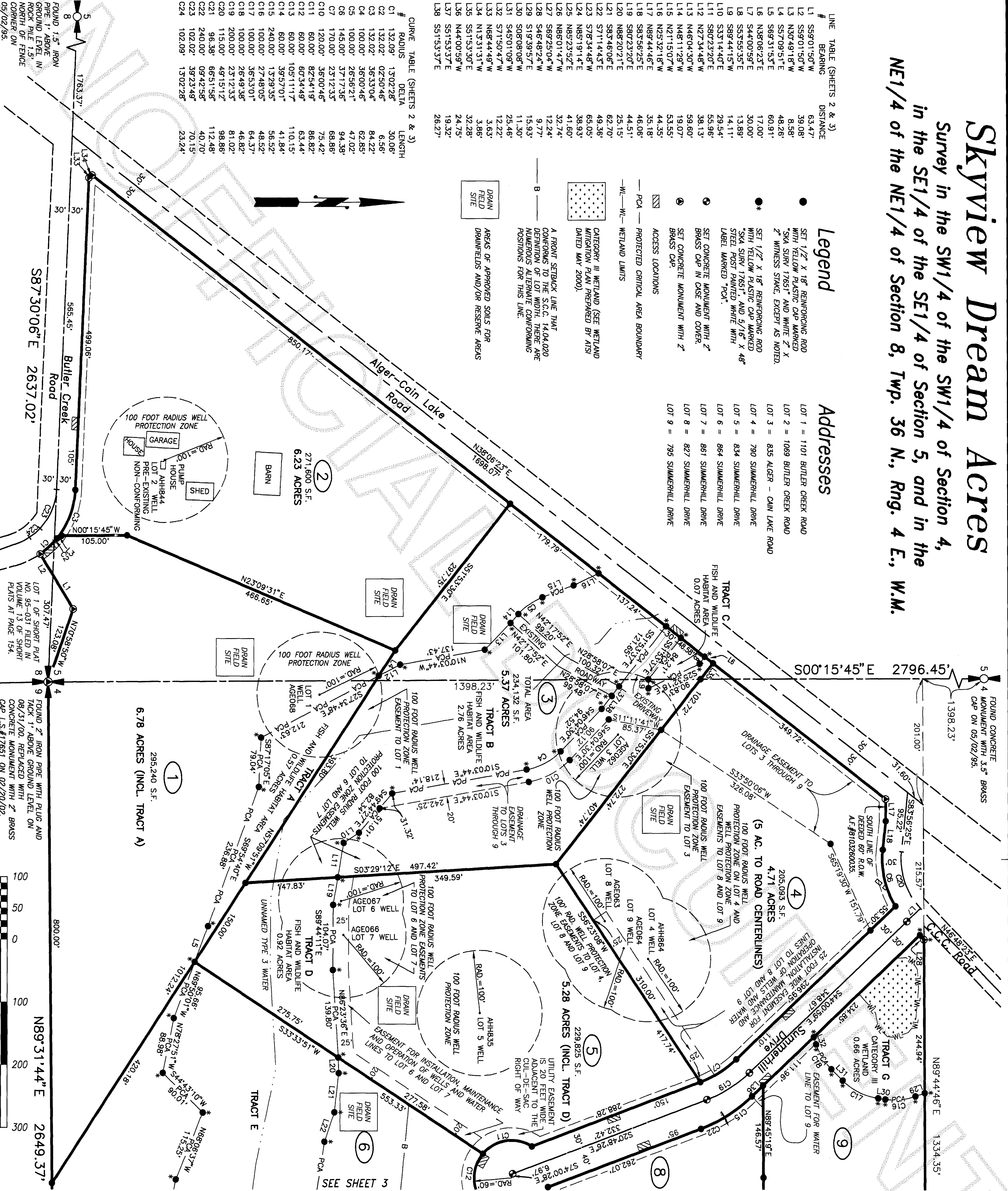
## Addresses

- LOT 1 = 1101 BUTLER CREEK ROAD
- LOT 2 = 1069 BUTLER CREEK ROAD
- LOT 3 = 835 ALGER - CANE LAKE ROAD
- LOT 4 = 790 SUMMERHILL DRIVE
- LOT 5 = 834 SUMMERHILL DRIVE
- LOT 6 = 864 SUMMERHILL DRIVE
- LOT 7 = 861 SUMMERHILL DRIVE
- LOT 8 = 827 SUMMERHILL DRIVE
- LOT 9 = 795 SUMMERHILL DRIVE

LINE #	BEARING	DISTANCE
L1	S59°01'50"W	63.47'
L2	S59°01'50"W	39.08'
L3	N30°49'18"W	8.58'
L4	S57°09'51"E	48.26'
L5	S69°31'53"E	60.91'
L6	N36°06'23"E	17.00'
L7	S44°00'58"E	30.00'
L8	S53°55'35"E	13.89'
L9	S89°44'15"W	14.11'
L10	S33°14'40"E	29.54'
L11	S80°23'20"E	55.96'
L12	N27°34'46"W	38.13'
L13	N46°04'30"W	59.60'
L14	N48°11'29"W	19.07'
L15	N21°15'07"W	53.55'
L16	N25°32'18"W	44.35'
L17	N89°44'46"E	35.18'
L18	S85°56'25"E	46.06'
L19	S80°23'20"E	44.51'
L20	N88°20'21"E	25.15'
L21	S83°46'06"E	62.70'
L22	S71°14'43"E	49.36'
L23	S78°34'48"W	65.05'
L24	N85°19'14"E	38.93'
L25	N85°23'52"E	41.60'
L26	N86°01'47"W	32.74'
L27	S69°25'04"W	12.24'
L28	S46°48'24"W	9.77'
L29	S19°39'57"E	15.93'
L30	S08°08'08"W	11.30'
L31	S45°01'09"W	25.46'
L32	S71°50'47"W	12.22'
L33	N68°44'49"W	3.63'
L34	N13°31'31"W	3.86'
L35	S51°53'30"E	32.28'
L36	N44°00'59"W	24.75'
L37	S51°53'37"E	19.32'
L38	S51°53'37"E	26.27'

## CURVE TABLE (SHEETS 2 & 3)

#	RADIUS	DELTA	LENGTH
C1	132.09'	13°02'28"	30.06'
C2	132.02'	02°50'46"	6.56'
C3	132.02'	36°33'04"	84.22'
C4	100.00'	36°00'46"	62.85'
C5	100.00'	26°56'21"	47.02'
C6	145.00'	37°17'36"	94.38'
C7	170.00'	23°12'33"	68.86'
C10	120.00'	36°00'46"	75.42'
C11	60.00'	82°54'19"	86.82'
C12	60.00'	60°34'49"	63.44'
C13	60.00'	105°11'17"	110.15'
C14	60.00'	39°57'01"	41.84'
C15	240.00'	13°29'35"	56.52'
C16	100.00'	27°48'05"	48.52'
C17	100.00'	36°53'01"	64.37'
C18	100.00'	26°49'38"	46.82'
C19	200.00'	23°12'33"	81.02'
C20	115.00'	49°15'12"	98.86'
C21	96.38'	66°51'58"	112.48'
C22	240.00'	09°42'58"	40.70'
C23	102.02'	38°23'49"	70.15'
C24	102.09'	13°02'28"	23.24'

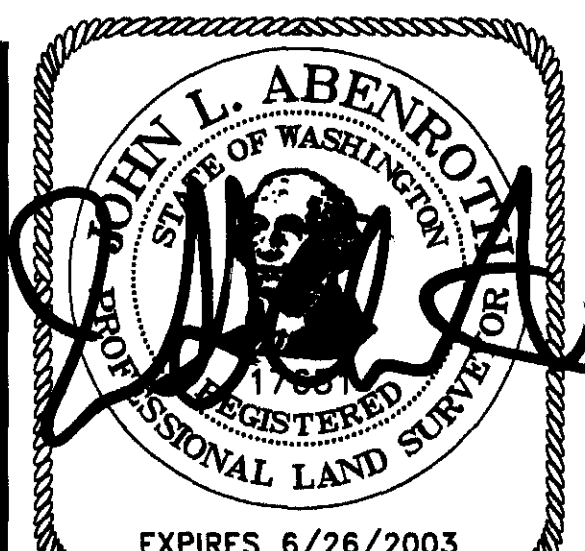


## AUDITOR'S CERTIFICATE

200305280141  
Skagit County Auditor

5/28/2003 Page 2 of 3 2:52PM

County Auditor or Deputy Auditor



3/28/03



