

Skagit County  
Return Name & Address

Skagit Surveyors & Engineers  
806 Metcalf Street  
Sedro-Woolley, WA 98284



200303250122  
Skagit County Auditor

3/25/2003 Page 1 of 4 2:12PM

Lot 6, Boundary Line Adjustment Survey  
of "LAKEWOOD PARK"

# PLANNING & PERMIT CENTER

LOT of RECORD CERTIFICATION

200 WEST WASHINGTON STREET - MOUNT VERNON, WA 98273 - (360) 336-9410

RECEIVED  
DATE RECEIVED  
Skagit County

FEB 26 2003

Community Development

Lot Certification File Number: PL 03-0125

Applicant Name: Randy & Katie Previs

Grantee/Property Owner's Name: Randy & Katie Previs and Lakewood Park, LLC

Having reviewed the information provided by the applicant, I hereby find that the parcel(s)  
bearing Assessor's Account Number(s):

A portion of 3842-046-000-0009, P#60766

A portion of 3842-050-022-0005, P#60771

X IS, a lot of record

**See attached legal description and map for certified lot of record boundaries.**

This lot includes at least one lot with a previous lot of record certification issued by Skagit County prior to January 28, 2002. Pursuant to the Settlement Agreement entered between Skagit County and Previs, et. al, on 3/13, 2003, this lot shall be eligible for a development permit.

Grantor/Skagit County Planning & Permit Center

Date: 3/13/2003

Authorized Signature: Gael Roeder

Title: Associate Planner

LEGAL DESCRIPTION  
FOR  
RANDY & KATIE PREVIS  
OF  
LOT 6

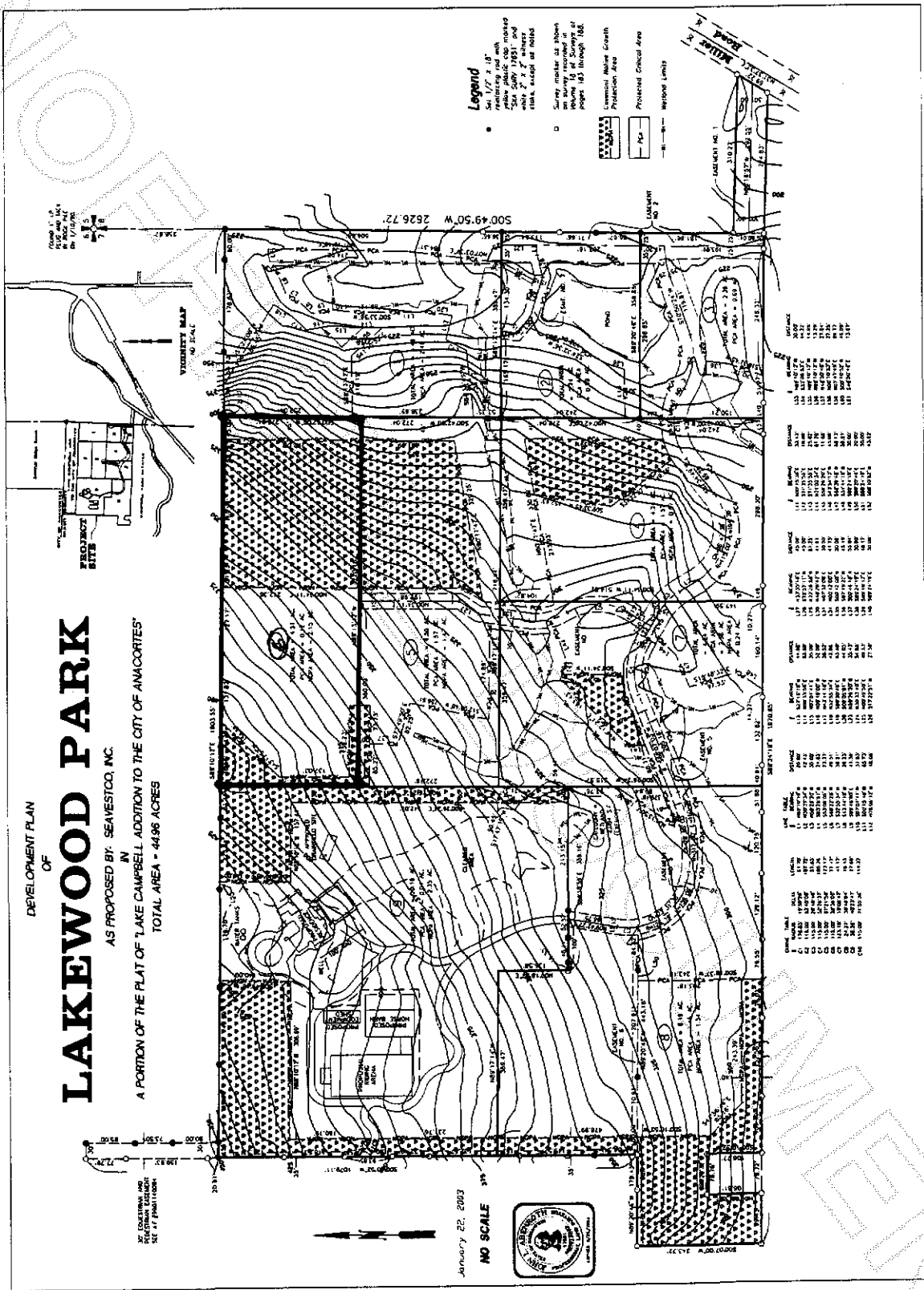
February 18, 2003

Lot 6 of Boundary Line Adjustment Survey of "LAKEWOOD PARK" recorded  
under Auditor's File Number 200303250116.

Situate in Skagit County, Washington.



200303250122  
Skagit County Auditor



DEVELOPMENT PLAN  
OF  
**LAKWOOD PARK**  
AS PROPOSED BY: SEAVESTCO, INC.  
IN  
A PORTION OF THE PLAT OF "LAKE CAMPBELL ADDITION TO THE CITY OF ANACORTES"  
TOTAL AREA - 44.96 ACRES

**Legend**

- Set 1/2" x 10" reflecting and with 2500' (1:2500) and 2" x 2" sheets state except as noted.
- Contour markers as shown on survey recorded in Volume 15 of Survey of Page 10 through 100.
- ▨ Commercial Nature Growth Protection Area
- ▩ Protected Critical Area
- Wetland Limits

Area	Area (Ac)	Area (Sq Ft)
1. Wetland	1.14	48,144
2. Wetland	1.14	48,144
3. Wetland	1.14	48,144
4. Wetland	1.14	48,144
5. Wetland	1.14	48,144
6. Wetland	1.14	48,144
7. Wetland	1.14	48,144
8. Wetland	1.14	48,144
9. Wetland	1.14	48,144
10. Wetland	1.14	48,144
11. Wetland	1.14	48,144
12. Wetland	1.14	48,144
13. Wetland	1.14	48,144
14. Wetland	1.14	48,144
15. Wetland	1.14	48,144
16. Wetland	1.14	48,144
17. Wetland	1.14	48,144
18. Wetland	1.14	48,144
19. Wetland	1.14	48,144
20. Wetland	1.14	48,144
21. Wetland	1.14	48,144
22. Wetland	1.14	48,144
23. Wetland	1.14	48,144
24. Wetland	1.14	48,144
25. Wetland	1.14	48,144
26. Wetland	1.14	48,144
27. Wetland	1.14	48,144
28. Wetland	1.14	48,144
29. Wetland	1.14	48,144
30. Wetland	1.14	48,144
31. Wetland	1.14	48,144
32. Wetland	1.14	48,144
33. Wetland	1.14	48,144
34. Wetland	1.14	48,144
35. Wetland	1.14	48,144
36. Wetland	1.14	48,144
37. Wetland	1.14	48,144
38. Wetland	1.14	48,144
39. Wetland	1.14	48,144
40. Wetland	1.14	48,144
41. Wetland	1.14	48,144
42. Wetland	1.14	48,144
43. Wetland	1.14	48,144
44. Wetland	1.14	48,144
45. Wetland	1.14	48,144
46. Wetland	1.14	48,144
47. Wetland	1.14	48,144
48. Wetland	1.14	48,144
49. Wetland	1.14	48,144
50. Wetland	1.14	48,144
51. Wetland	1.14	48,144
52. Wetland	1.14	48,144
53. Wetland	1.14	48,144
54. Wetland	1.14	48,144
55. Wetland	1.14	48,144
56. Wetland	1.14	48,144
57. Wetland	1.14	48,144
58. Wetland	1.14	48,144
59. Wetland	1.14	48,144
60. Wetland	1.14	48,144
61. Wetland	1.14	48,144
62. Wetland	1.14	48,144
63. Wetland	1.14	48,144
64. Wetland	1.14	48,144
65. Wetland	1.14	48,144
66. Wetland	1.14	48,144
67. Wetland	1.14	48,144
68. Wetland	1.14	48,144
69. Wetland	1.14	48,144
70. Wetland	1.14	48,144
71. Wetland	1.14	48,144
72. Wetland	1.14	48,144
73. Wetland	1.14	48,144
74. Wetland	1.14	48,144
75. Wetland	1.14	48,144
76. Wetland	1.14	48,144
77. Wetland	1.14	48,144
78. Wetland	1.14	48,144
79. Wetland	1.14	48,144
80. Wetland	1.14	48,144
81. Wetland	1.14	48,144
82. Wetland	1.14	48,144
83. Wetland	1.14	48,144
84. Wetland	1.14	48,144
85. Wetland	1.14	48,144
86. Wetland	1.14	48,144
87. Wetland	1.14	48,144
88. Wetland	1.14	48,144
89. Wetland	1.14	48,144
90. Wetland	1.14	48,144
91. Wetland	1.14	48,144
92. Wetland	1.14	48,144
93. Wetland	1.14	48,144
94. Wetland	1.14	48,144
95. Wetland	1.14	48,144
96. Wetland	1.14	48,144
97. Wetland	1.14	48,144
98. Wetland	1.14	48,144
99. Wetland	1.14	48,144
100. Wetland	1.14	48,144



200303250122  
Skagit County Auditor

